

Figure 12. Telephone TP-6 (St Carl No. 1242WA), arranged for manual operation.

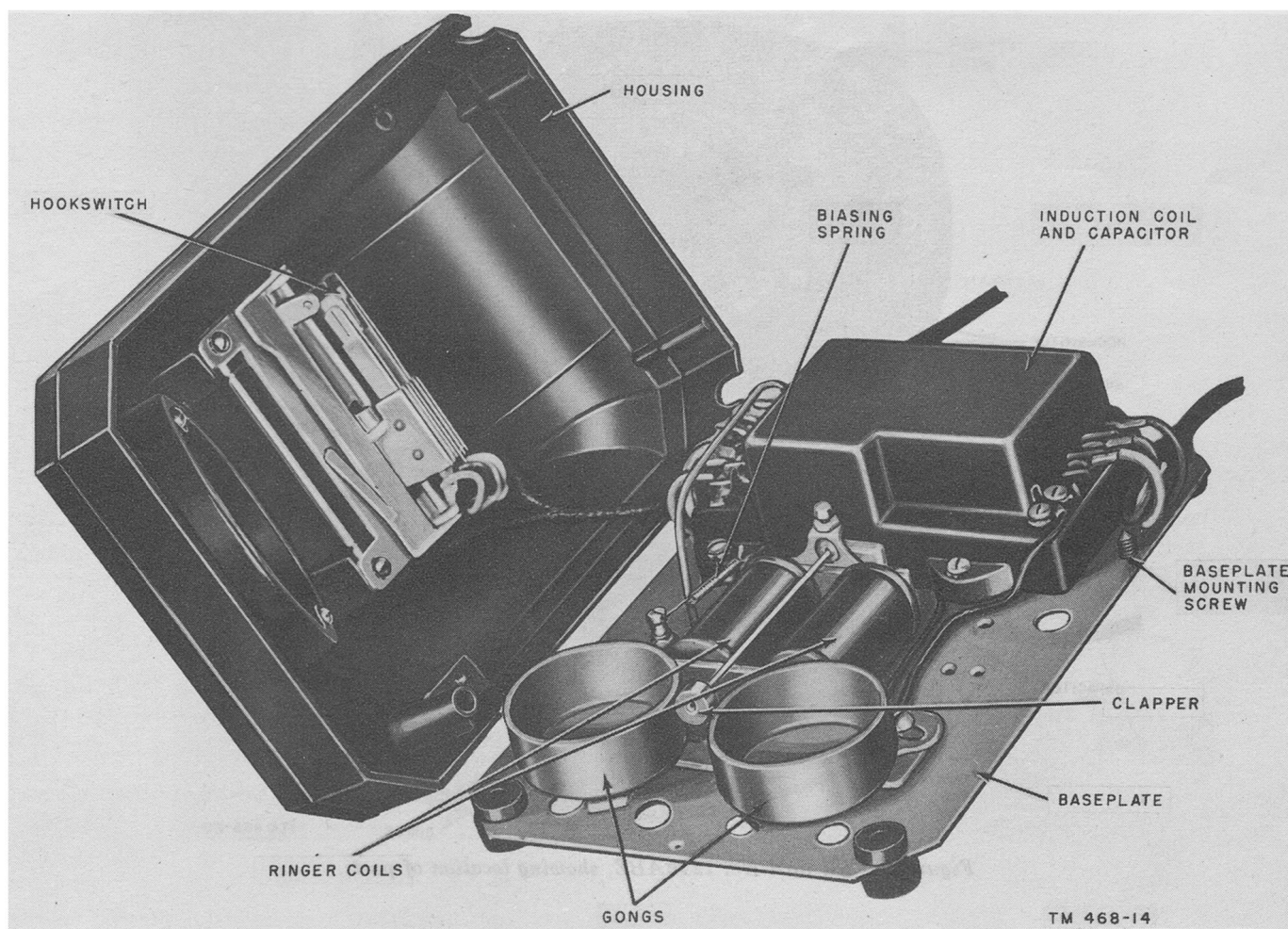
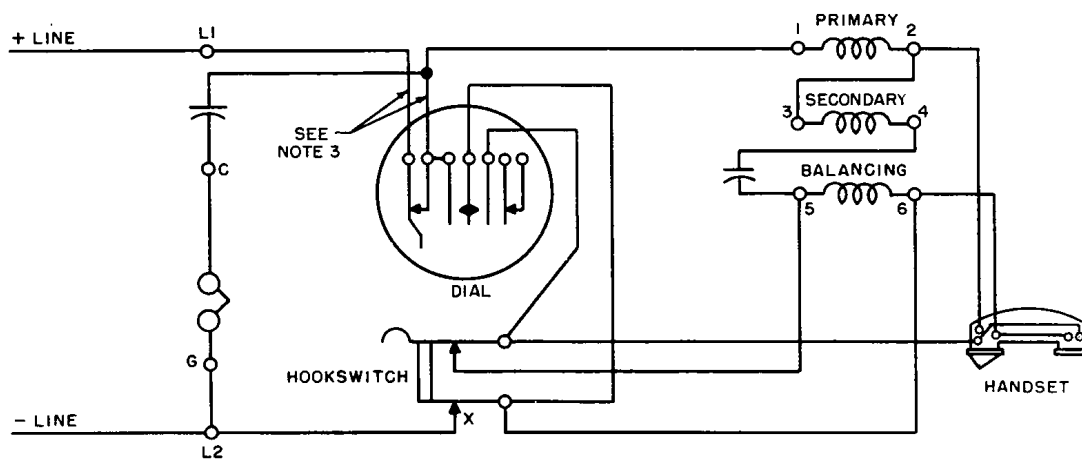


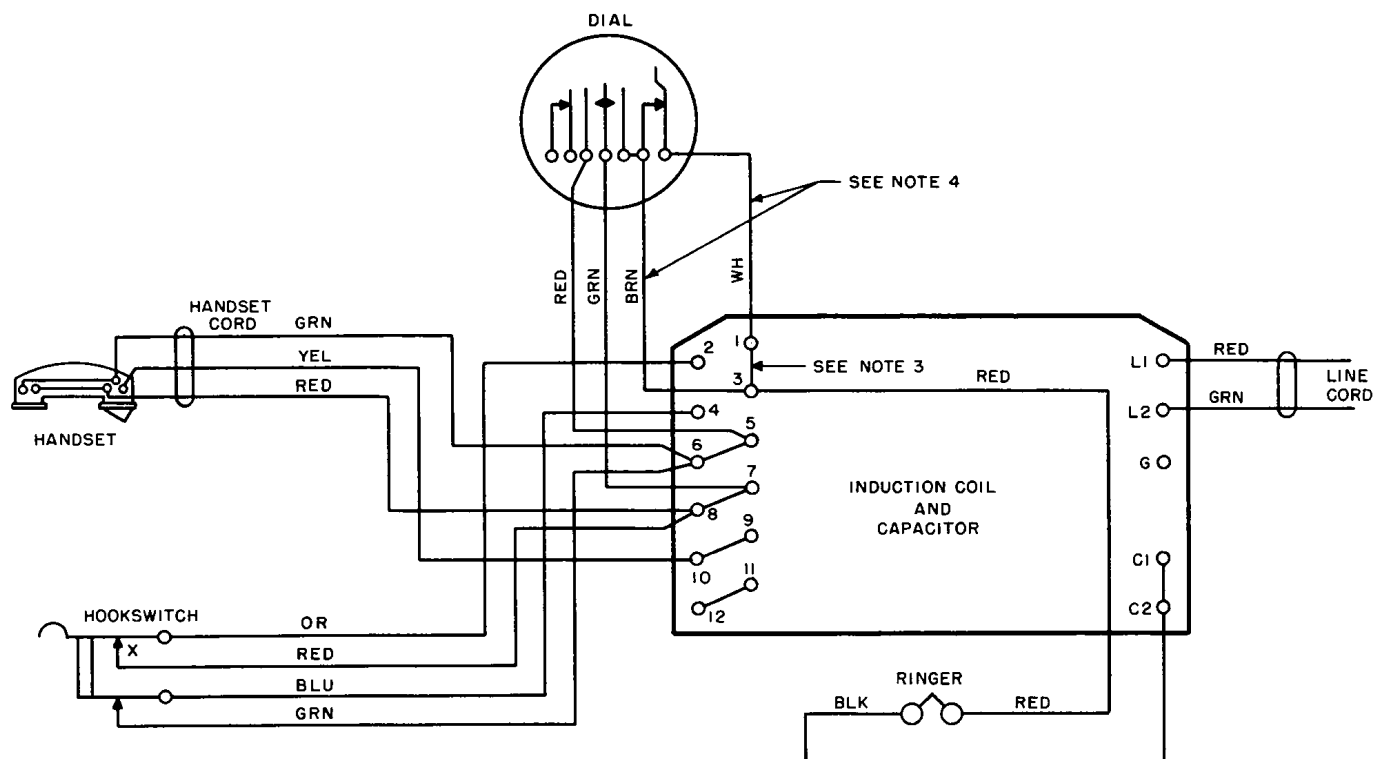
Figure 13. Telephone TP-6 (St Carl No. 1242WA), showing location of parts.



NOTES:

1. HOOKSWITCH SHOWN WITH HANDSET REMOVED FROM CRADLE.
2. X CONTACTS OF HOOKSWITCH MAKE FIRST.
3. STRAP THESE LEADS WHEN DIAL IS NOT USED.

A



NOTES:

1. HOOKSWITCH SHOWN WITH HANDSET REMOVED FROM CRADLE.
2. X CONTACTS OF HOOKSWITCH MAKE FIRST.
3. REMOVE STRAP WHEN DIAL IS USED.
4. STRAP THESE LEADS WHEN DIAL IS NOT USED.

B

TM 468-67

Figure 94. Telephone TP-6 (St Carl 1242 WA), schematic (A) and wiring (B) diagrams.