

Figure 10. Telephone TP-6 (North Elec Mfg No. H-600SL and No. 3H6SL), arranged for dial operation.

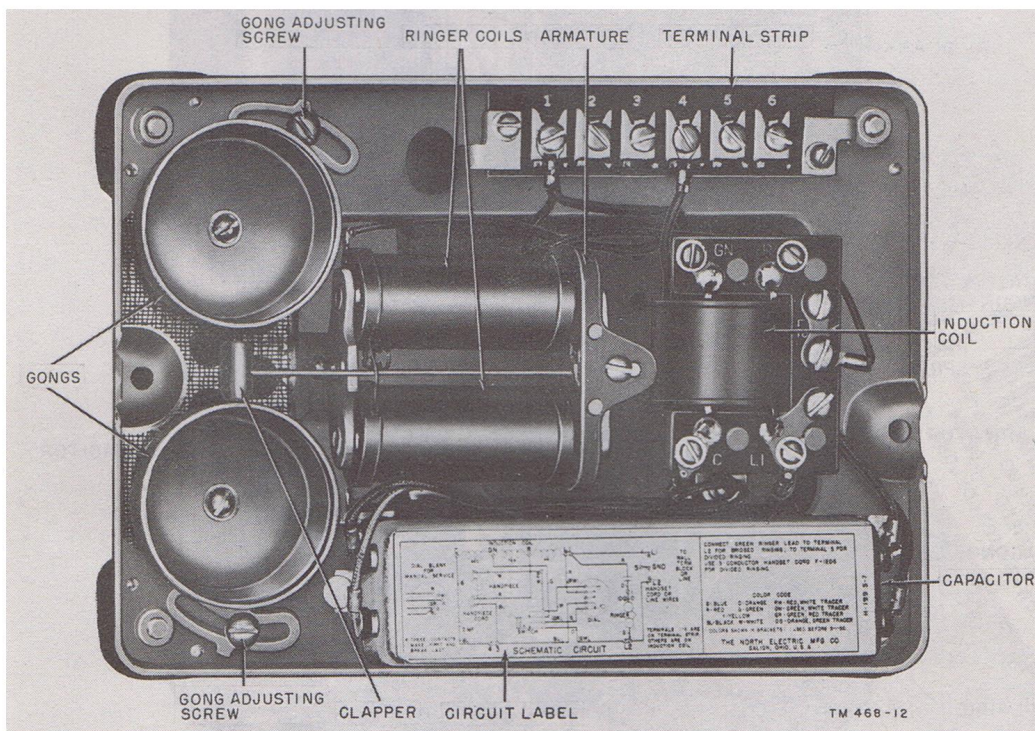
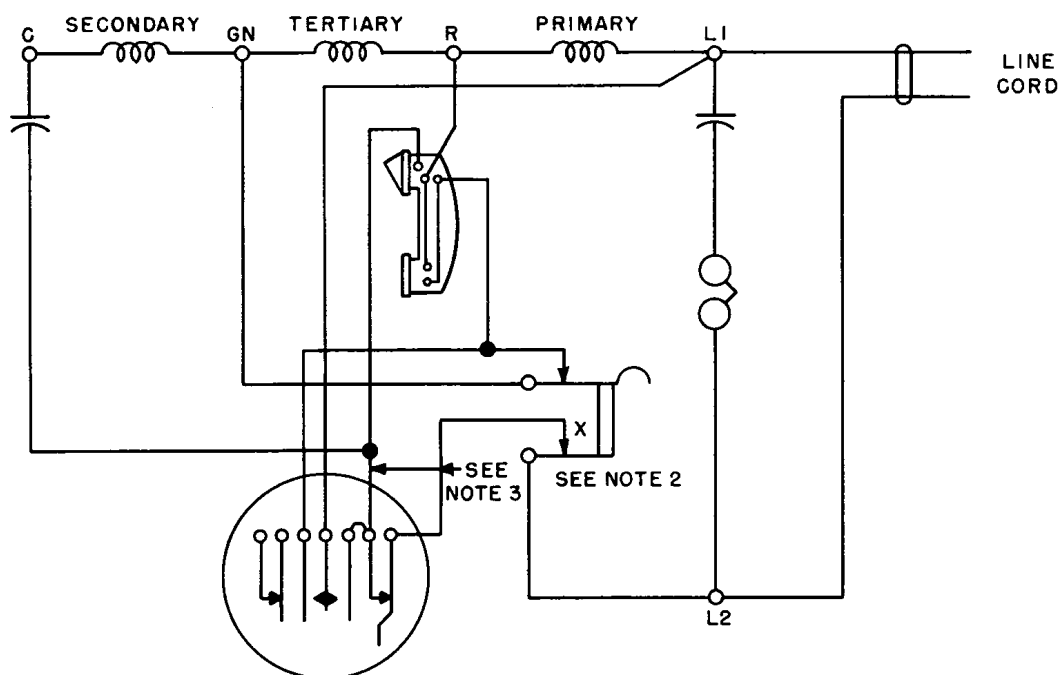
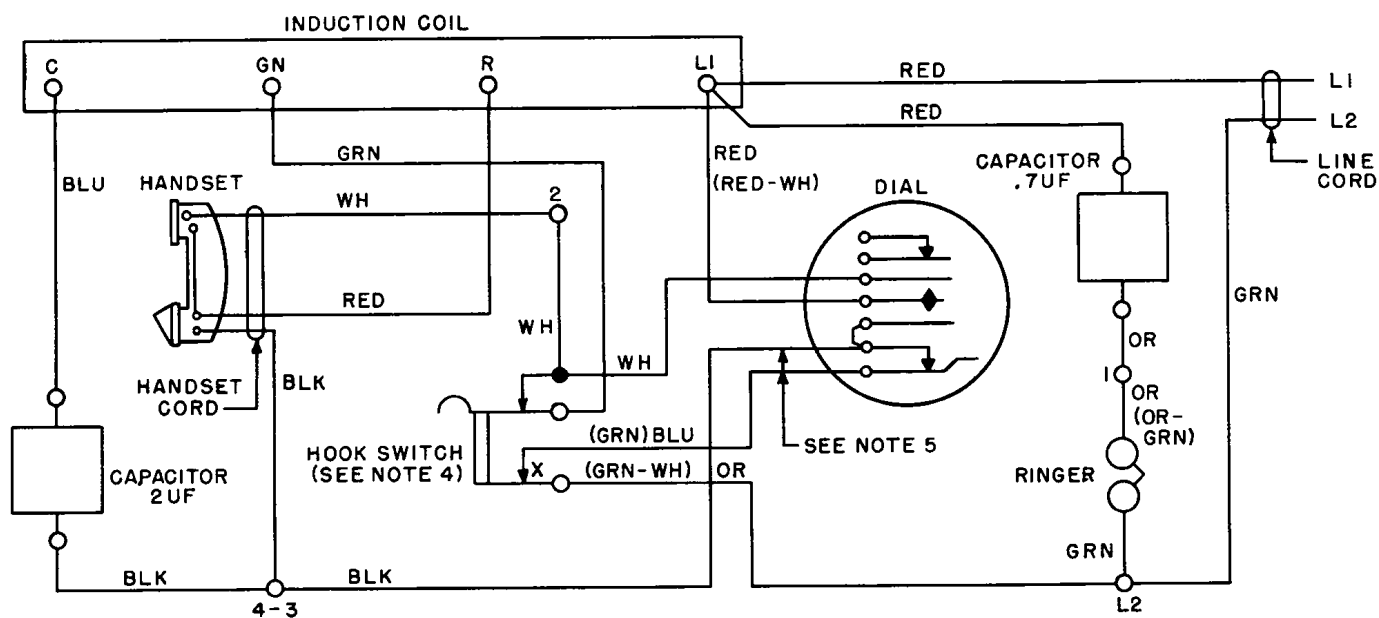


Figure 11. Telephone TP-6 (North Elec Mfg No. H-600SL and No. 3H6SL), with base plate open, showing location of parts.



- NOTES:
1. HOOKSWITCH CONTACTS SHOWN WITH HANDSET REMOVED FROM CRADLE.
  2. X CONTACTS MAKE FIRST AND BREAK LAST.
  3. STRAP THESE LEADS WHEN DIAL IS NOT USED.

A



- NOTES:
1. HOOKSWITCH CONTACTS SHOWN WITH HANDSET REMOVED FROM CRADLE.
  2. TERMINALS 1 THROUGH 5 ARE ON TERMINAL BOARD; OTHER TERMINALS ARE ON INDUCTION COIL.
  3. COLORS SHOWN IN BRACKETS ARE USED ON EARLIER MODELS.
  4. X CONTACTS MAKE FIRST AND BREAK LAST.
  5. STRAP THESE LEADS WHEN DIAL IS NOT USED.

B

TM 468-68

Figure 95. Telephone TP-6 (North Elec MFG 3H4SL and H-600SL), schematic (A) and wiring (B) diagrams.