

Figure 20. Telephone TA-105/FTC, guard and fire telephone.

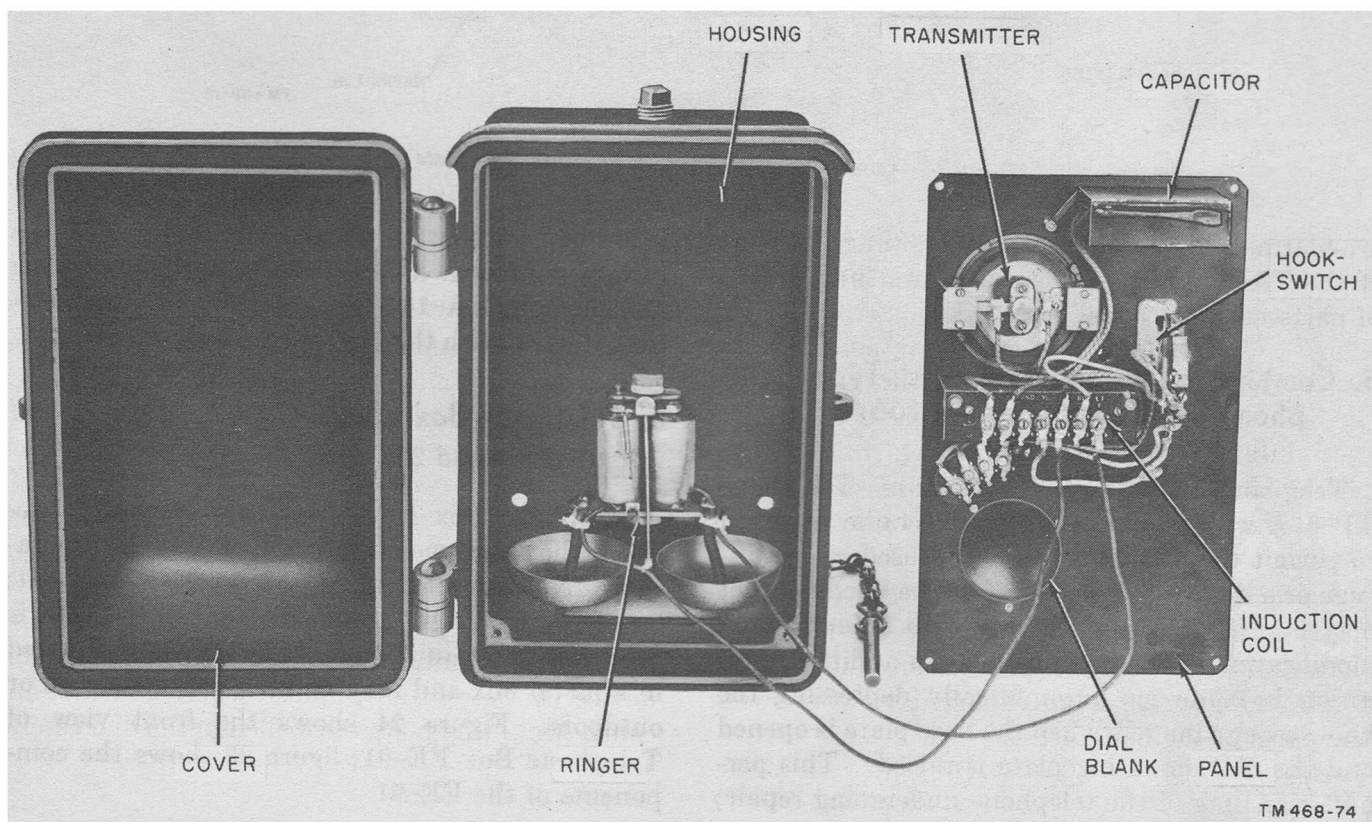
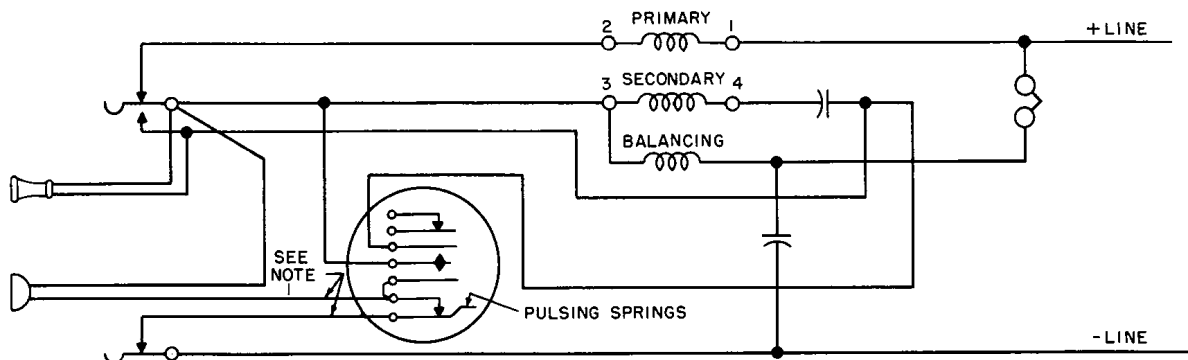
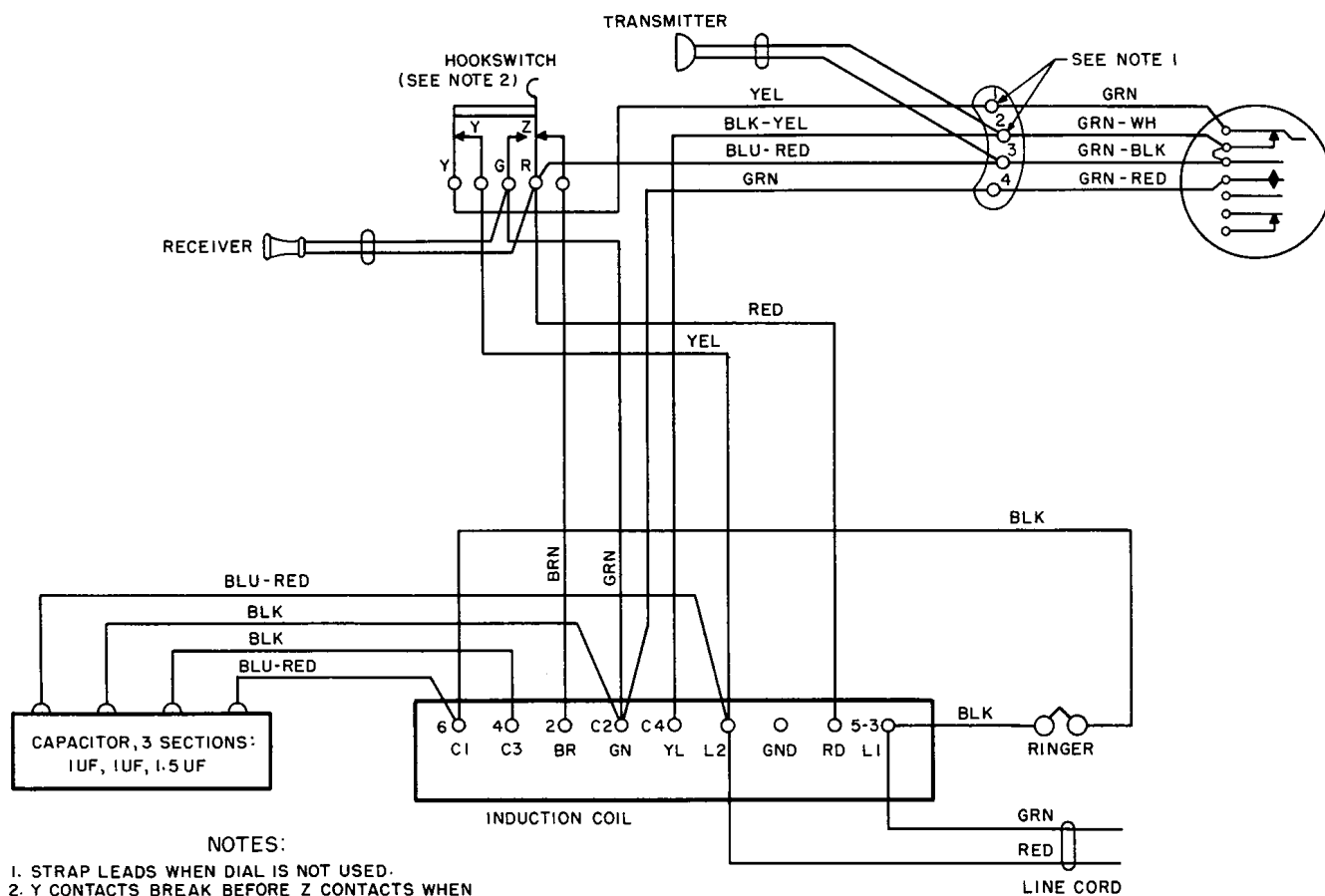


Figure 21. Telephone TA-105/FTC, with panel removed, showing location of parts.



- NOTES:
1. STRAP LEADS WHEN DIAL IS NOT USED
 2. HOOKSWITCH SHOWN WITH HANDSET REMOVED FROM CRADLE

A



- NOTES:
1. STRAP LEADS WHEN DIAL IS NOT USED.
 2. Y CONTACTS BREAK BEFORE Z CONTACTS WHEN THE RECEIVER IS PLACED ON HOOKSWITCH.
 3. HOOKSWITCH SHOWN WITH HANDSET REMOVED FROM CRADLE.

B
TM 468-72

Figure 98. Telephone TA-105/FTC, schematic (A) and wiring (B) diagrams.