

"TEL-TOUCH" DESK TELEPHONES: K-1500; K-2500



Figure 1. "TEL-TOUCH" Desk Telephone

1. GENERAL INFORMATION

The "TEL-TOUCH" desk telephones are similar to the K-500 series of telephones except for the pushbutton dial and related parts. Early phones, (K-1500), have a 10-pushbutton dial; current phones (K-2500), have a 12-pushbutton dial. To replace the 10-pushbutton dial, order a 12-pushbutton dial, type 32; one 180147--** Face plate; one 87513-1 number card, and one 87514-1 number card retainer. Refer to appropriate circuit diagram to connect dial leads.

Ordering information is shown in Table I.

Replaceable parts are listed in Table II.

2. INSTALLATION

An appropriate circuit label is packed with each telephone. It includes all necessary instructions for telephone installation and ringer connections.

3. ADDITIONAL INFORMATION

The "TEL-TOUCH" dial is covered in Section 228.

4. DISASSEMBLY AND ASSEMBLY

4.1 HOUSING GROUP

(a) Removal of Housing (Ref to Figure 2)
 Loosen the two cabinet lock screws (26), and lift off the housing and face plate group, (3, 11, 12 and 13).

(b) Installation of Housing
 Work the housing over the dial push-buttons and secure with the two cabinet lock screws.

4.2 FACE PLATE GROUP (Refer to figure 2)

NOTE: Two styles of 10-button face plates are in use. The early style is shown in the inset and numbered 11, 12, and 13. This face plate is molded of transparent plastic and the underside painted black with the exception of the clear window for the number card. The number card (13) is held in by a brass retainer (12).

The later style face plate (11A) is molded of colored plastic and uses a snap-in number card window (12A) which serves as number card retainer.

(a) REMOVAL OF FACE PLATE GROUP

Use the straightened end of a paper clip and insert in the slot of the Face Plate Mounting Clip (9). Pry the clip back until the face plate is released.

(b) INSTALLATION OF FACE PLATE GROUP

Insert lower edge of Face Plate in matching slot in Housing. Press upper edge inward while holding Mounting Clip (9) in with straightened end of paper clip.

(c) INSTALLING NUMBER CARD

To replace the Number Card in the early style Face Plate, remove the Face Plate as directed in (a) above. Remove Retainer (12) and Number Card (13). Install the Number Card, Retainer and Face Plate.

To replace the Number Card in the later style Face Plate, remove the Retainer (12A) by inserting the straightened end of a paper clip in the slot at the right end of the Retainer and prying upward. Place the number card in the recess and snap in the Retainer as follows: Insert the left end of the Retainer in the recess, holding the Retainer near center, bend the right end down into the recess and release the Retainer.

4.3 REPLACING COMPONENTS

In replacing components, refer to Table II for correct part numbers. The telephone identifying code is stamped in ink on the bottom of the telephone base. Replace the Ringer by substitution - each Ringer is identified by a code stamped in ink on the ringer frame. Refer to the appropriate circuit label to connect leads.

TABLE 1. ORDERING INFORMATION

CODE	DESCRIPTION
K-2500**()30__	TELEPHONE, "TEL-TOUCH", Standard
K-2500**()33__	TELEPHONE, "TEL-TOUCH", Lift-to-talk
K-2500**()39__	TELEPHONE, "TEL-TOUCH", for Hands Free Application
K-2502**()30__	TELEPHONE, "TEL-TOUCH", Exclusion
	Add Dial Code as Follows: R-Regular M-Metro
	Insert Ringer Code As Follows: LR-Less Ringer BA-Straight Line Biased Ringer (---)-Frequency Selective Ringer (specify Exact Ringer - See Page 343.04)
	**Substitute Color Code as Follows: 00-Black 05-Green 09-Ivory 12-Aqua Blue 13-Light Beige 15-White 16-Sea Green

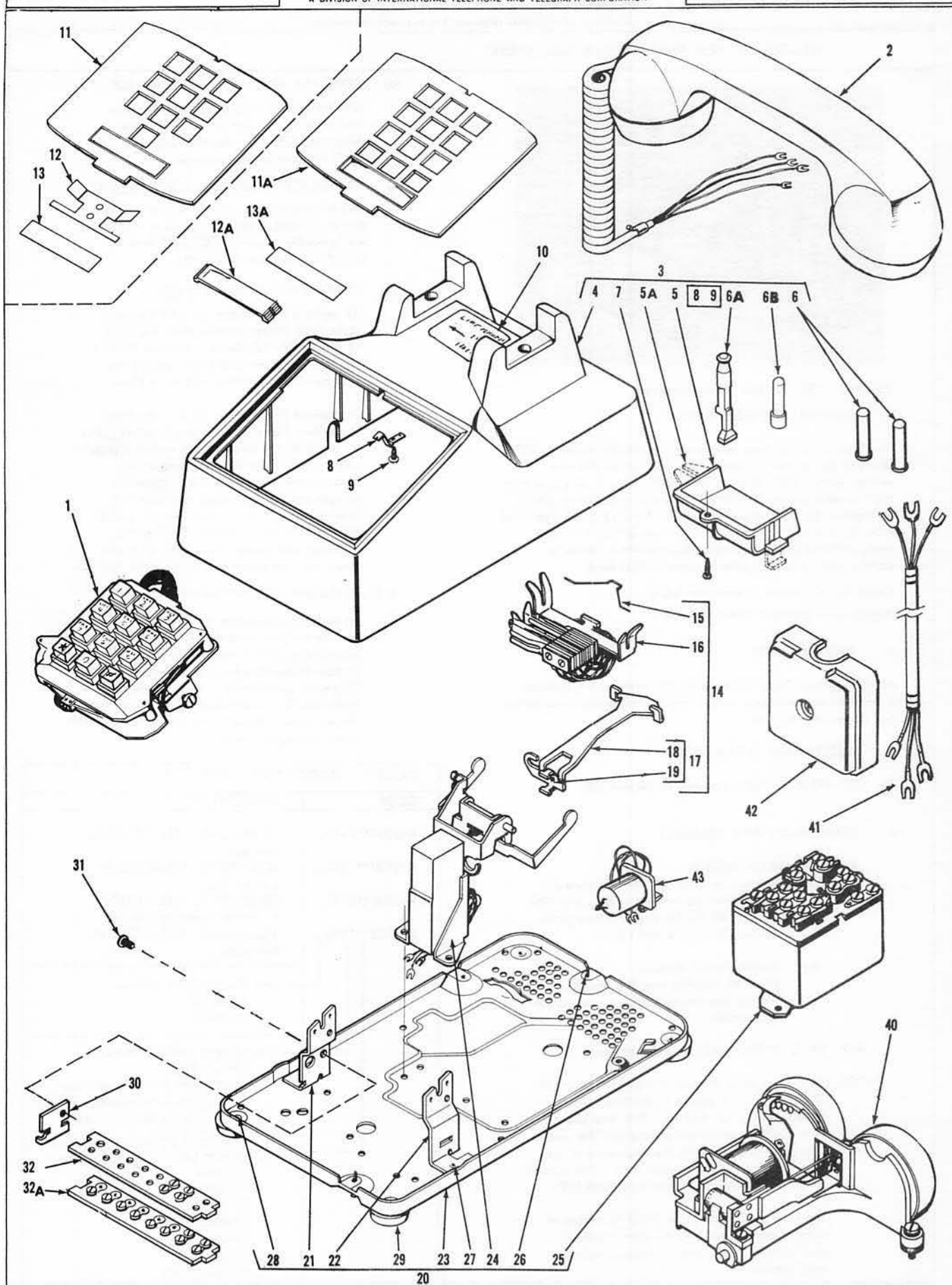


Figure 2. Single line "TEL-TOUCH" desk telephones, exploded view.

FIGURE NO.	INDEX NO.	PART NUMBER	NAME, Description	QUANTITY USED ON:				
				1500 /30	2500 /30	2500 /33	2500 /39	2502 /30
TABLE II. REPLACEABLE PARTS LIST, "TEL-TOUCH" DESK TELEPHONES (Single Line)								
2	1	27(D)450	DIAL ASSEMBLY, 10-Pushbutton, Regular *	1	-	-	-	-
	1	27(G)450	DIAL ASSEMBLY, 10-Pushbutton, Metro *	1	-	-	-	-
	1	32(D)450	DIAL ASSEMBLY, 12-Pushbutton, Regular	-	1	1	-	1
	1	32(G)450	DIAL ASSEMBLY, 12-Pushbutton, Metro	-	1	1	-	1
	1	36(D)450	DIAL ASSEMBLY, 12-Pushbutton, Regular - (Hands - Free)	-	-	-	1	-
	1	36(G)450	DIAL ASSEMBLY, 12-Pushbutton, Metro - (Hands - Free)	-	-	-	1	-
	2	65**(C2)410	HANDSET ASSEMBLY, (See Section 212)	1	1	1	1	1
	3	86138-**	HOUSING AND PLUNGER ASSEMBLY (Standard Plungers)	1	1	-	1	-
	3	88490-**	HOUSING AND PLUNGER ASSEMBLY (One Lift Plunger)	-	-	1	-	1
	4	86137-**	HOUSING	1	1	1	1	1
	5	75405-**	RETAINER, Plunger (for Standard Plungers)	1	1	-	1	-
	5A	79606-**	RETAINER, Plunger (Used with Lift Plunger)	-	-	1	-	1
	6	75406-2	PLUNGER, Cradle Switch, Standard	2	2	-	2	-
	6A	79603-2	PLUNGER, Cradle Switch, Lift Type	-	-	1	-	1
	6B	79101-2	PLUNGER, Cradle Switch (Used with Lift - Type Plunger)	-	-	1	-	1
	7	75407-2	SCREW, (Plunger Retainer)	1	1	1	1	1
	8	86143-1	CLIP, Face Plate Mounting	1	1	1	1	1
	9	95884-2	SCREW, Face Plate Clip	1	1	1	1	1
	10	86370-1	LABEL, Lift-to-Talk, Black Letters			X		
	10	86370-2	LABEL, Lift-to-Talk, White Letters			X		
	11	86147-1	FACE PLATE, Old Style (Clear Plastic, Painted Black) 10-Button	1	-	-	-	-
	11A	86147-00	FACE PLATE, New Style (Molded of Black Plastic) - 10-Button	1	-	-	-	-
	11A	180147-**	FACE PLATE, for 12-Pushbutton Dial	-	1	1	1	1
	12	86144-1	RETAINER, Number Card, Old Style (Metal)	1	-	-	-	-
	12A	87514-1	RETAINER, Number Card, New Style (Clear Plastic)	-	1	1	1	1
	13	88443-1	CARD, Number (For Old Style Face Plate)	1	-	-	-	-
	13A	87513-1	CARD, Number (For New Style Face Plate)	-	1	1	1	1
	14	79613-1	SWITCH ASSEMBLY, Exclusion	-	-	-	-	1
	14	79613-2	SWITCH ASSEMBLY, Lift-To-Talk	-	-	1	-	-
	15	79624-1	RETAINER, Spring Assembly	-	-	1	-	1
	16	79614-1	SPRING ASSEMBLY, Exclusion	-	-	-	-	1
	16	79614-2	SPRING ASSEMBLY, Lift-To-Talk	-	-	1	-	-
	17	7962501	BRACKET ASSEMBLY, Switch	-	-	1	-	1
	18	79605-1	BRACKET, Switch	-	-	1	-	1
	19	69020-3	SCREW	-	-	1	-	1
	20	75338-13	BASE ASSEMBLY	1	1	-	-	-
	20	75338-20	BASE ASSEMBLY	-	-	-	1	-
	20	75338-16	BASE ASSEMBLY	-	-	1	-	1
	21	86146-1	BRACKET, Dial; L.H.	1	1	1	1	1
	22	86145-1	BRACKET, Dial; R.H.	1	1	1	1	1
	23	NSS	BASE (Not Serviced Separately)	1	1	1	1	1
	24	75300-1	CRADLE SWITCH ASSEMBLY, (See Section 250)	1	1	-	-	-
	24	75300-2	CRADLE SWITCH ASSEMBLY, (See Section 250)	-	-	1	-	1
	24	75300-4	CRADLE SWITCH ASSEMBLY, (See Section 250)	-	-	-	1	-
			(Attaching Parts)					
		32199-1	RIVET	3	3	3	3	3
	25	75335-1	NETWORK ASSEMBLY	1	1	1	1	1
			(Attaching Parts)					
		32199-1	RIVET	2	2	2	2	2
	26	75486-1	SCREW, Cabinet Lock	2	2	2	2	2
	27	31944-2	RIVET, (Dial Brackets)	2	2	2	2	2
	28	82486-2	RIVET, (Foot)	4	4	4	4	4
	29	82400-1	FOOT	4	4	4	4	4
	30	86103-1	PLATE, Terminal Board Mounting	1	1	1	1	1
	31	75392-2	SCREW, Terminal Board Mounting	1	1	1	1	1
	32	79467-2	TERMINAL BOARD ASSEMBLY, (4 Terminal Screws)	1	1	-	-	-
	32A	79467-1	TERMINAL BOARD ASSEMBLY, (10 Terminal Screws)	-	-	1	1	1

(Note: Index numbers 33 through 39 not used.)

* To replace type 27, (10-button), dial, order type 32, (12-button) dial, one 180147-** Face Plate, one 87513-1 Number Card, and one 87514-1 Number Card Retainer.

FIGURE NO.	INDEX NO.	PART NUMBER	NAME, Description	(Indented items are included in the part under which they are indented)					QUANTITY USED ON:				
TABLE II. REPLACEABLE PARTS LIST, "TEL-TOUCH" DESK TELEPHONES (Single Line)				1500 /30	2500 /30	2500 /33	2500 /39	2502 /30					
2	40	130(BA)470	RINGERS (See Section 244)										
		-----	RINGER, Straight Line Biased	X	X	X	X	X					
				RINGER, Frequency Selective									
		156()470	-With Volume Control	X	X	X	X	X					
		157()470	-Less Volume Control	X	X	X	X	X					
		↓											
		(HA1)	HARMONIC										
		(HA2)	33-1/3 cps										
		(HA3)	50 cps (Same as HC5)										
		(HA4)	66-2/3 cps										
		(HA5)	16-2/3 cps										
			25 cps										
		(HB1)	SYNCHROMONIC										
		(HB2)	30 cps (Same as HC3)										
		(HB3)	42 cps										
		(HB4)	54 cps										
		(HB5)	66 cps										
			16 cps										
		(HC1)	DECIMONIC										
		(HC2)	20 cps										
		(HC3)	60 cps										
		(HC4)	30 cps (Same as HB1)										
		(HC5)	40 cps										
			50 cps (Same as HA2)										
41		3031**(06)650	CORD, Desk Stand, 3-conductor	1	1	1	-	-					
41		3044**(14)650	CORD, Desk Stand, 6-conductor	-	-	-	-	1					
		3052**(27)650	CORD, Desk Stand, 11-conductor	-	-	-	1	-					
42		29()783	BLOCK, Connecting, 10-terminals	-	-	-	1	1					
42		32()783	BLOCK, Connecting, 4-terminals	1	1	1	-	-					
43		75599-1	TUBE, Ringer. (Used with BA Ringer for superimposed signaling.)	X	X	X	X	X					
									</				

NOTES:

- 1-CONNECT YELLOW MOUNTING CORD LEAD TO SAME TERMINAL AS RED MOUNTING CORD LEAD AT CONNECTING BLOCK FOR ALL CLASSES OF SERVICE EXCEPT THOSE LISTED IN TABLE "A"
- 2-FOR TIP-PARTY WITH NO IDENTIFYING GROUND MOVE RED RINGER LEAD FROM L2 TO L1 ON NETWORK AS SHOWN IN TABLE "B"

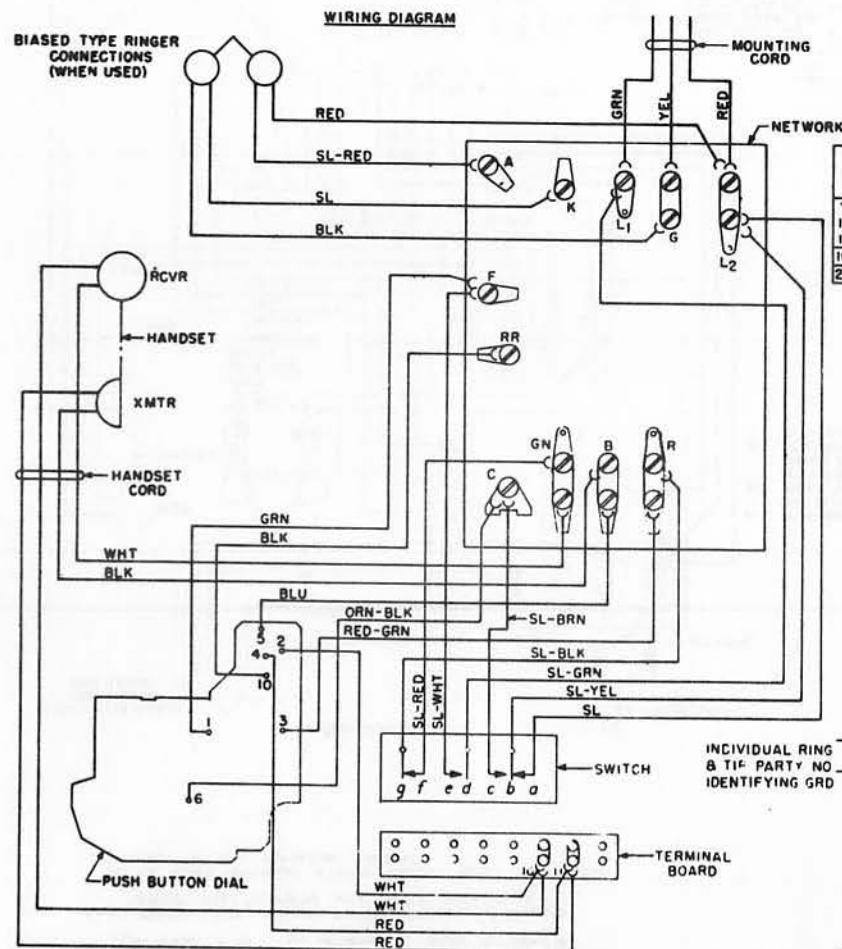


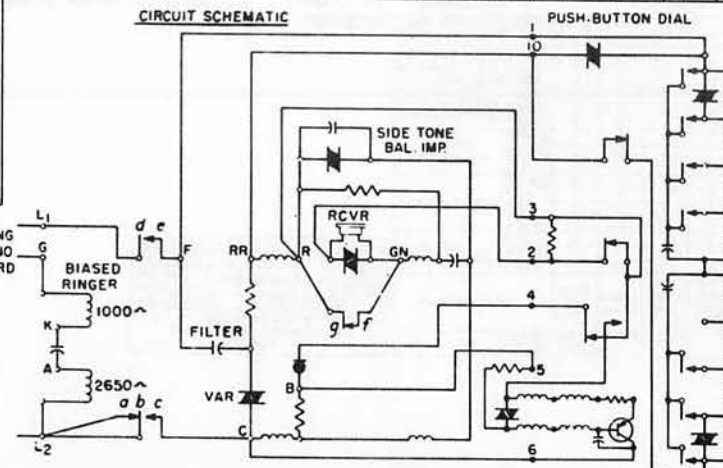
TABLE "A"
RINGER LEAD CONNECTIONS TO SILENCE RINGER PERMANENTLY

TIP PARTY IDENTIFYING GRD.	RED	BLACK	SLATE	SLATE-RED
1000 OHMS	K	G	B	K
2650 OHMS	B	K	K	G

TABLE "B"
LINE & RINGER CONNECTIONS

WIRE OR LEAD	INDIV. OR BRDG.	RING PARTY	NO IDENT. GRD.	TIP PARTY IDENT. 1000 OHMS	TIP PARTY IDENT. 2650 OHMS
MOUNTING CORD IN SET	RED L2	L2	L2	L2	L2
	GRN L1	L1	L1	L1	L1
	YEL G	G	G	G	G
RINGER LEADS	RED L2	L2	L1	K	B
	BLK G	G	G	B	B
	SL K	K	K	B	K
	SL-RED A	A	A	B	G
HOOKSWITCH LEADS	SL L2	L2	L2	A	A
	SL-WHT F	F	F	C	C
	SL-BRN C	C	C	F	F
MOUNTING CORD AT CONN. BLOCK	RED R	R	R	G	G
	GRN G	G	G	R	R
	YEL Y	Y	Y	Y	Y
LINE WIRE AT CONN. BLOCK	RING GRD	R	R	R	R
	TIP GRD	G	G	G	G
	YEL Y	Y	Y	Y	Y

CIRCUIT SCHEMATIC



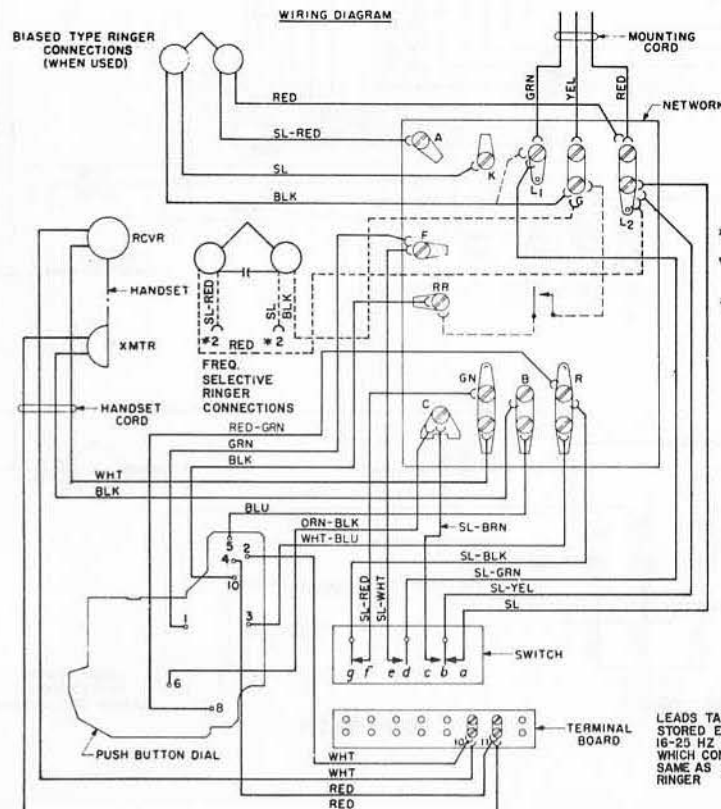
2500 TYPE TELEPHONE CIRCUIT

NOTES:

- 1 - FOR TIP-PARTY WITH NO IDENTIFYING GROUND MOVE RED RINGER LEAD FROM L2 TO L1 ON NETWORK AS SHOWN IN TABLE *.
- 2 - (a) BROKEN LINES BETWEEN TERMINAL "RR" AND "G" INDICATE CIRCUIT FOR TELEPHONE WITH SPECIAL FEATURE 34.
(b) TO PROVIDE GROUNDING FEATURE, REMOVE BLACK RINGER LEAD FROM "G" AND REPOSITION TO "L1".

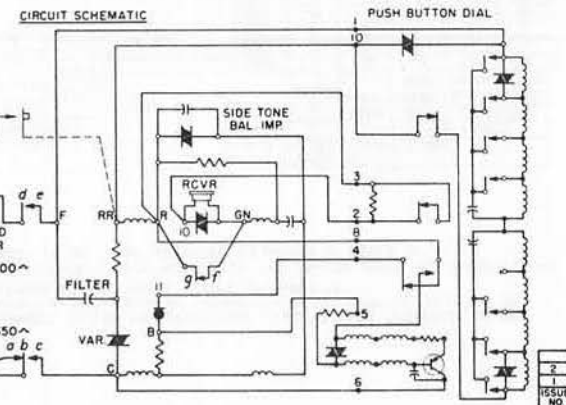
130 BA RINGER LEAD CONNECTIONS TO SILENCE RINGER PERMANENTLY				
TIP PARTY IDENTIFY- ING GRD.	RINGER LEADS			
	RED	BLACK	SLATE	SLATE -RED
1000 OHMS	K	G	B	K
2650 OHMS	B	K	K	G

* 130 BA RINGER LINE & RINGER CONNECTIONS									
WIRE OR LEAD	INDIV. OR BRDG.	RING PARTY	TIP PARTY				NO IDENT GRD	1000 OHMS	2650 OHMS
			L2	L2	L2	L2			
MOUNTING CORD IN SET	RED	L2	L1	L1	L1	L1	K	L1	L1
	GRN	L1	L1	L1	L1	L1	G	G	G
RINGER LEADS	YEL	G	G	G	G	G	B	B	B
	RED	L2	L2	L2	L2	L2	K	K	K
HOOKSWITCH LEADS	SL	K	K	K	K	K	B	B	B
	SL-RED	A	A	A	A	A	B	B	B
MOUNTING CORD AT CONN. BLOCK	SL	L2	L2	L2	L2	L2	A	A	A
	SL-WHT	F	F	F	F	F	C	C	C
LINE WIRE AT CONN. BLOCK	SL-BRN	C	C	C	C	C	F	F	F
	RED	R	R	R	R	R	G	G	G
TIP PARTY DIAL	GRN	G	G	G	G	G	R	R	R
	YEL	G	Y	Y	Y	Y	Y	Y	Y
TIP PARTY DIAL	RED	R	R	R	R	R	R	R	R
	GRN	G	G	G	G	G	G	G	G
TIP PARTY DIAL	YEL	Y	Y	Y	Y	Y	Y	Y	Y
	GRD	Y	Y	Y	Y	Y	Y	Y	Y



- *1 IF GROUND IS BROUGHT TO CONNECTING BLOCK.
- *2 TAPED AND STORED EXCEPT FOR 16-25 HZ RINGERS WHICH CONNECT SAME AS BIASED RINGER.
- *3 TRANSFER SLATE SWITCH LEAD FROM (L2) TO (A) TERMINAL ON NETWORK.

CONNECTIONS FOR 156-157 FREQUENCY SELECTIVE RINGER									
CLASS OF SERVICE	CONNECTIONS AT CONNECTING BLOCK					CONNECTIONS IN SET			
	LINE	MTG. CORD	RINGER LEADS	RINGER LEADS	RINGER LEADS	RINGER LEADS	RINGER LEADS	RINGER LEADS	RINGER LEADS
BRIDGED	R	G	Y	R	G	G	L2	G	*2
RING PARTY	R	G	Y	R	G	Y	L2	G	*2
TIP PARTY	R	G	Y	R	G	Y	L2	G	*2
TIP PARTY DIAL MESSAGE RATE *3	R	G	Y	R	G	Y	A	G	B
TIP PARTY DIAL MESSAGE RATE *3	R	G	Y	R	G	Y	G	A	*2
TIP PARTY DIAL MESSAGE RATE *3	R	G	Y	R	G	Y	G	A	*2

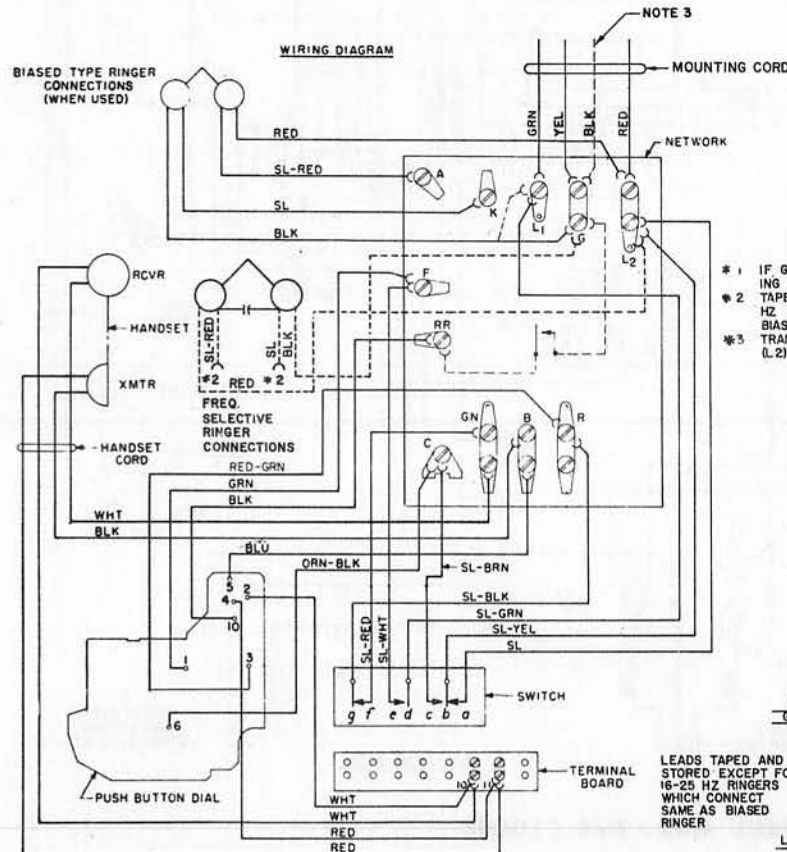


180135

2500 TYPE TELEPHONE CIRCUIT

NOTES:

- 1 - FOR TIP-PARTY WITH NO IDENTIFYING GROUND MOVE RED RINGER LEAD FROM L2 TO L1 ON NETWORK AS SHOWN IN TABLE #.
- 2 - (a) BROKEN LINES BETWEEN TERMINAL "RR" AND "G" INDICATE CIRCUIT FOR TELEPHONE WITH SPECIAL FEATURE 34.
(b) TO PROVIDE GROUNDING FEATURE, REMOVE BLACK RINGER LEAD FROM "G" AND REPOSITION TO "L1".
- 3 - WHEN 4 CONDUCTORS ARE FURNISHED WITH MOUNTING CORD, TERMINATE BLACK CONDUCTOR WITH YELLOW CONDUCTOR AT CONNECTING BLOCK EXCEPT WHERE USED FOR SPECIAL APPLICATIONS.

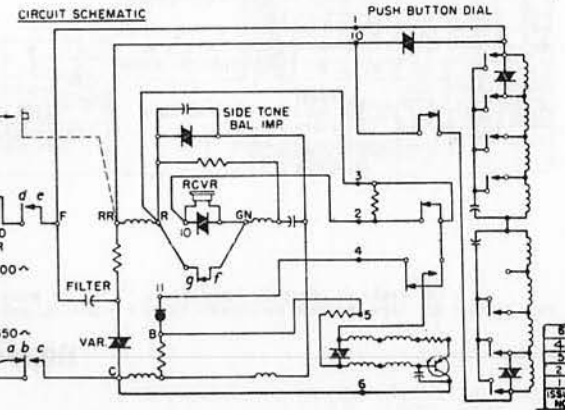


- #1 IF GROUND IS BROUGHT TO CONNECTING BLOCK.
- #2 TAPED AND STORED EXCEPT FOR 16-25 HZ RINGERS WHICH CONNECT SAME AS BIASED RINGER.
- #3 TRANSFER SLATE SWITCH LEAD FROM (L2) TO 'A' TERMINAL ON NETWORK.

130 BA RINGER LEAD CONNECTIONS TO SILENCE RINGER PERMANENTLY				
TIP PARTY IDENTIFYING GRD.	RINGER LEADS			
	RED	BLACK	SLATE	SLATE-RED
1000 OHMS	K	G	B	K
2650 OHMS	B	K	K	G

* 130 BA RINGER LINE & RINGER CONNECTIONS						
WIRE OR LEAD	INDIV. OR BRDG.	RING PARTY	TIP PARTY			
			NO IDENT GRD	1000 OHMS	2650 OHMS	
MOUNTING CORD IN SET	RED	L2	L2	L2	L2	L2
	GRN	L1	L1	L1	L1	L1
	YEL	G	G	G	G	G
RINGER LEADS	RED	L2	L2	L1	K	B
	BLK	G	G	G	C	B
	SL	K	K	K	B	K
HOOKSWITCH LEADS	SL-RED	A	A	A	B	G
	SL	L2	L2	L2	A	A
	SL-WHT	F	F	F	C	C
MOUNTING CORD AT CONN. BLOCK	SL-BRN	C	C	C	F	F
	RED	R	R	R	G	G
	GRN	G	G	G	R	R
LINE WIRE AT CONN. BLOCK	YEL	G	Y	Y	Y	Y
	RED	R	R	R	R	R
	TIP GRD	G	G	G	G	G
BLOCK	YEL	Y	Y	Y	Y	Y
	GRD					

CONNECTIONS FOR 156-157 FREQUENCY SELECTIVE RINGER										
CLASS OF SERVICE	CONNECTIONS AT CONNECTING BLOCK					CONNECTIONS IN SET				
	LINE	RING	TIP	GND	MTG. CORD	RINGER LEADS	RED	BLK	SL	SL-RED
BRIDGED	R	G	Y	N1	R	G	G	L2	G	#2 #2
RING PARTY	R	G	Y	R	G	Y	L2	G	#2 #2	#2
TIP PARTY	R	G	Y	G	R	Y	L2	G	#2 #2	#2
TIP PARTY DIAL MESSAGE RATE #3	R	G	Y	G	R	Y	A	G	B	#2
TIP PARTY DIAL MESSAGE RATE #3	R	G	Y	G	R	Y	G	A	#2	B



LEADS TAPED AND STORED EXCEPT FOR 16-25 HZ RINGERS WHICH CONNECT SAME AS BIASED RINGER

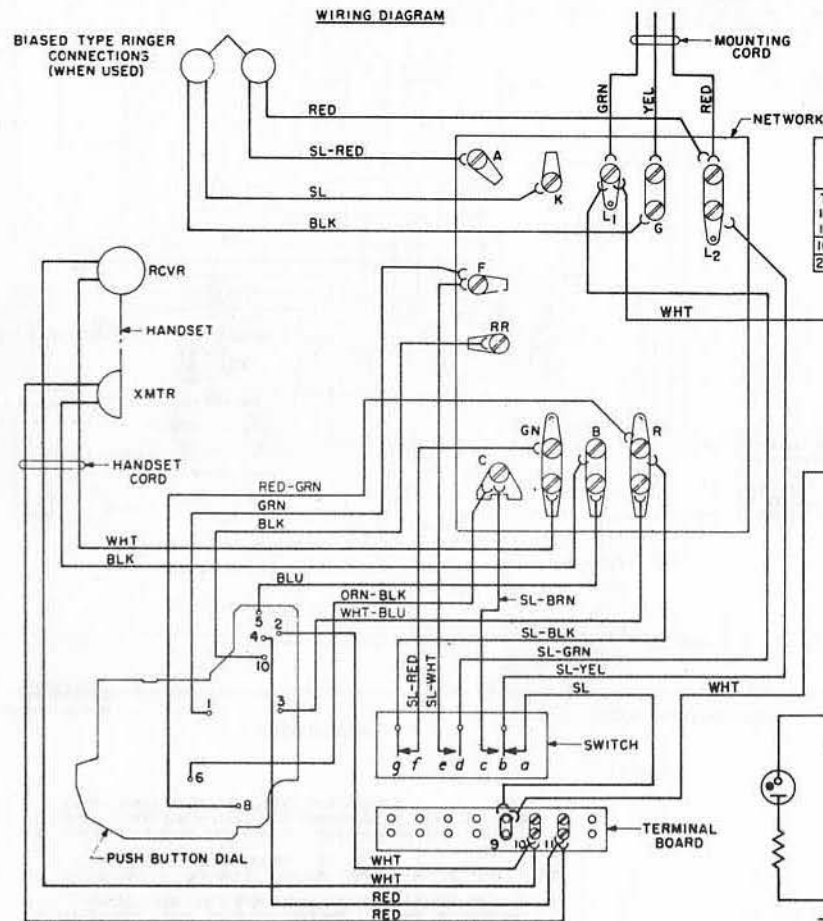
180135

2500() 37M / 38M TYPE TELEPHONE CIRCUIT

NOTES:

L FOR TIP-PARTY WITH NO IDENTIFYING GRND. MOVE RED RINGER LEAD FROM L₂ TO L₁ ON NETWORK AS SHOWN IN TABLE "B"

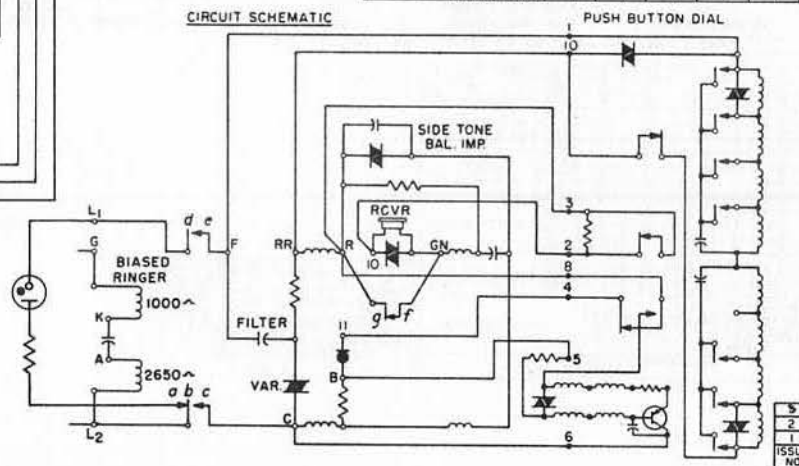
WIRING DIAGRAM



TIP PARTY IDENTIFYING GRD.	RINGER LEADS			
	RED	BLACK	SLATE	SLATE-RED
1000 OHMS	K	G	B	K
2650 OHMS	B	K	K	G

WIRE OR LEAD	INDIV. OR BRDG.	RING PARTY	TIP PARTY	
			NO IDENT. GRD.	IDENT GRD.
MOUNTING CORD IN SET	RED	L ₂	L ₂	L ₂
	GRN	L ₁	L ₁	L ₁
	YEL	G	G	G
RINGER LEADS	RED	L ₂	L ₁	K
	BLK	G	G	B
	SL	K	K	B
HOOKSWITCH LEADS	SL-RED	A	A	B
	SL	L ₂	L ₂	A
	SL-WHT	F	F	C
MOUNTING CORD AT CONN. BLOCK	SL-BRN	C	C	F
	RED	R	R	G
	GRN	G	G	R
LINE WIRE AT CONN. BLOCK	YEL	Y	Y	Y
	RED	R	R	R
	GRD	G	G	G

CIRCUIT SCHEMATIC



ITT Telecommunications
APPARATUS DEPARTMENT
CORINTH, MISSISSIPPI
A DIVISION OF INTERNATIONAL TELEPHONE AND TELEGRAPH CORPORATION

2500 () 37M / 38M TYPE TELEPHONE CIRCUIT

NOTES:

1. FOR TIP-PARTY WITH NO IDENTIFYING GROUND MOVE RED RINGER LEAD FROM L₂ TO L₁ ON NETWORK AS SHOWN IN TABLE "B"
2. WHEN 4 CONDUCTORS ARE FURNISHED WITH MOUNTING CORD, TERMINATE BLACK CONDUCTOR WITH YELLOW CONDUCTOR AT CONNECTING BLOCK EXCEPT WHERE USED FOR SPECIAL APPLICATIONS.

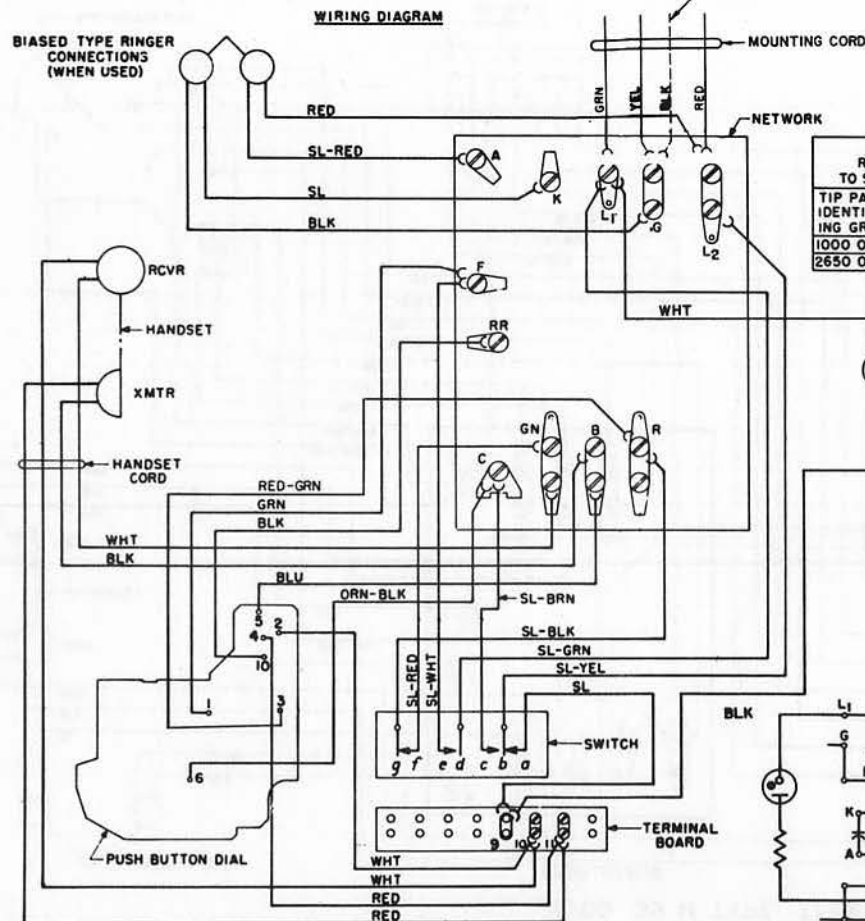


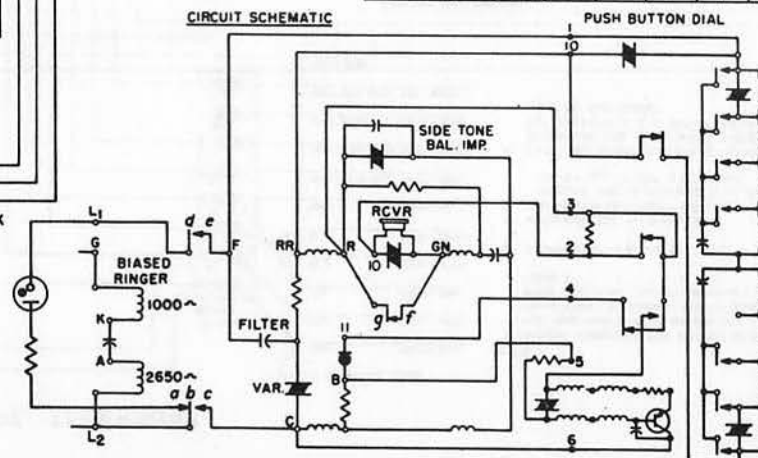
TABLE "A"
RINGER LEAD CONNECTIONS TO SILENCE RINGER PERMANENTLY

TIP PARTY IDENTIFY-ING GRD.	RED	BLACK	SLATE	SLATE-RED
1000 OHMS	K	G	B	K
2650 OHMS	B	K	K	G

TABLE "B"
LINE & RINGER CONNECTIONS

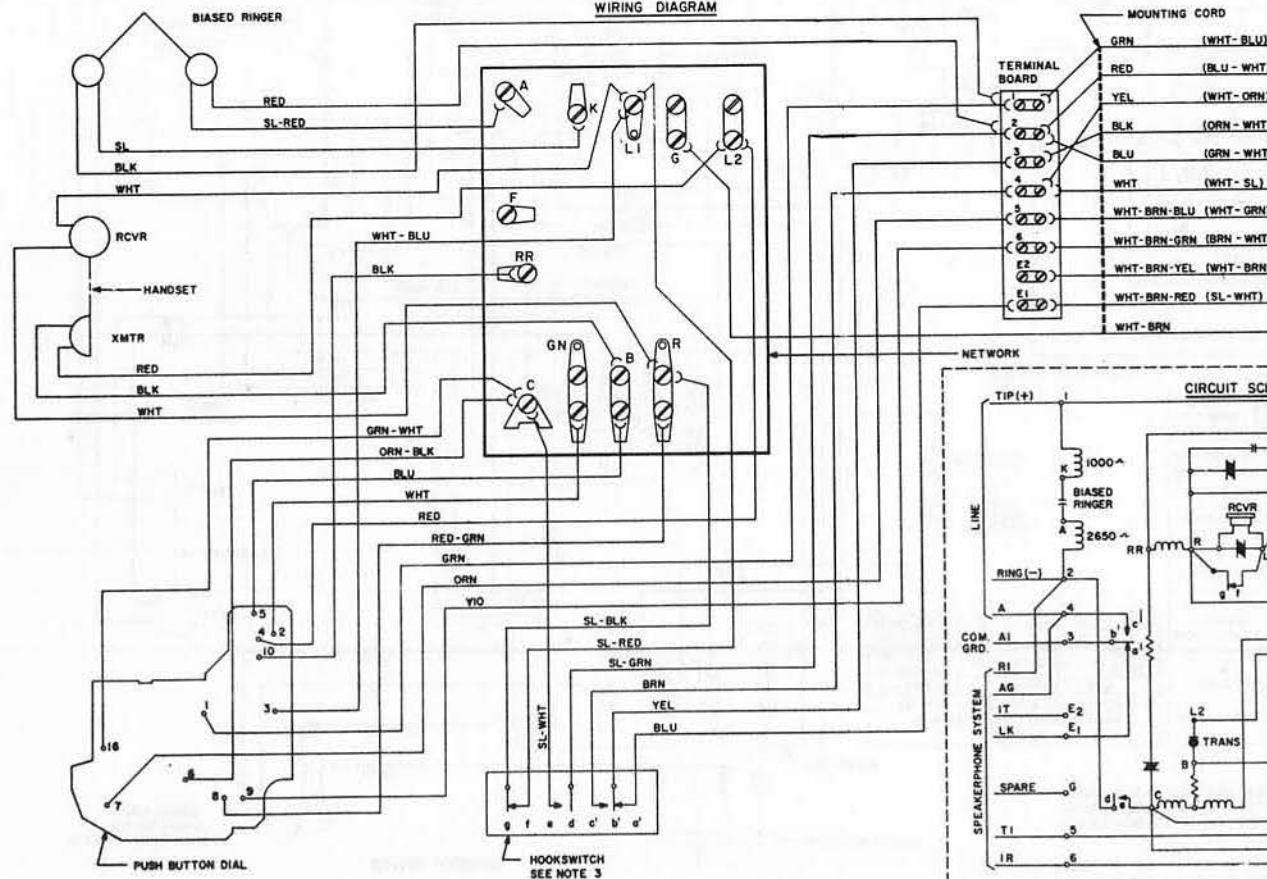
WIRE OR LEAD	INDIV. OR BRDG.	RING PARTY	NO IDENT. GRD.	IDENT. GRD. 1000 OHMS	IDENT. GRD. 2650 OHMS
MOUNTING CORD IN SET	RED L ₂ GRN L ₁ YEL G BLK G	L ₂ L ₁ G G	L ₂ L ₁ G G	L ₂ L ₁ G G	L ₂ L ₁ G G
RINGER LEADS	SL K BLK G SL-RED A	K G A	K G A	B G B	K G B
HOOKEWITCH LEADS	SL L ₂ SL-WHT F SL-BRN C	L ₂ F C	L ₂ F C	A C C	A C C
MOUNTING CORD AT CONN. BLOCK	RED R GRN G YEL G	R G G	R G Y	R G Y	R G Y
LINE WIRE AT CONN. BLOCK	RING RED TIP GRN GRD YEL	R G Y	R G Y	R G Y	R G Y

CIRCUIT SCHEMATIC



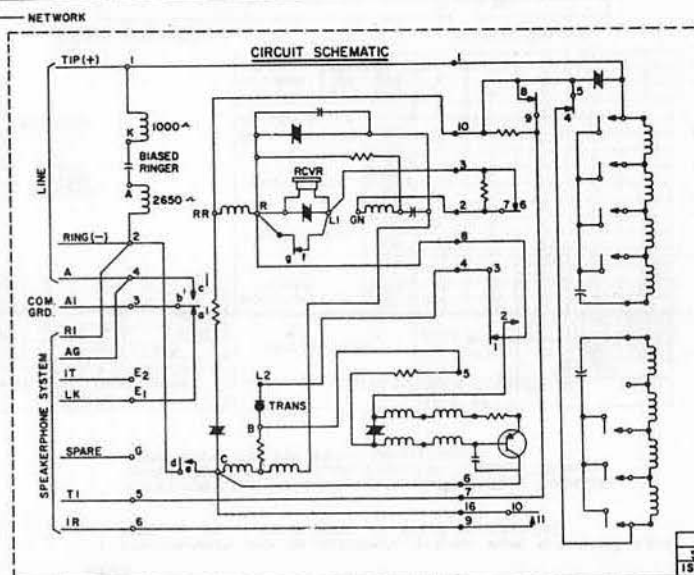
2500 39 M TYPE TELEPHONE

WIRING DIAGRAM



NOTES:

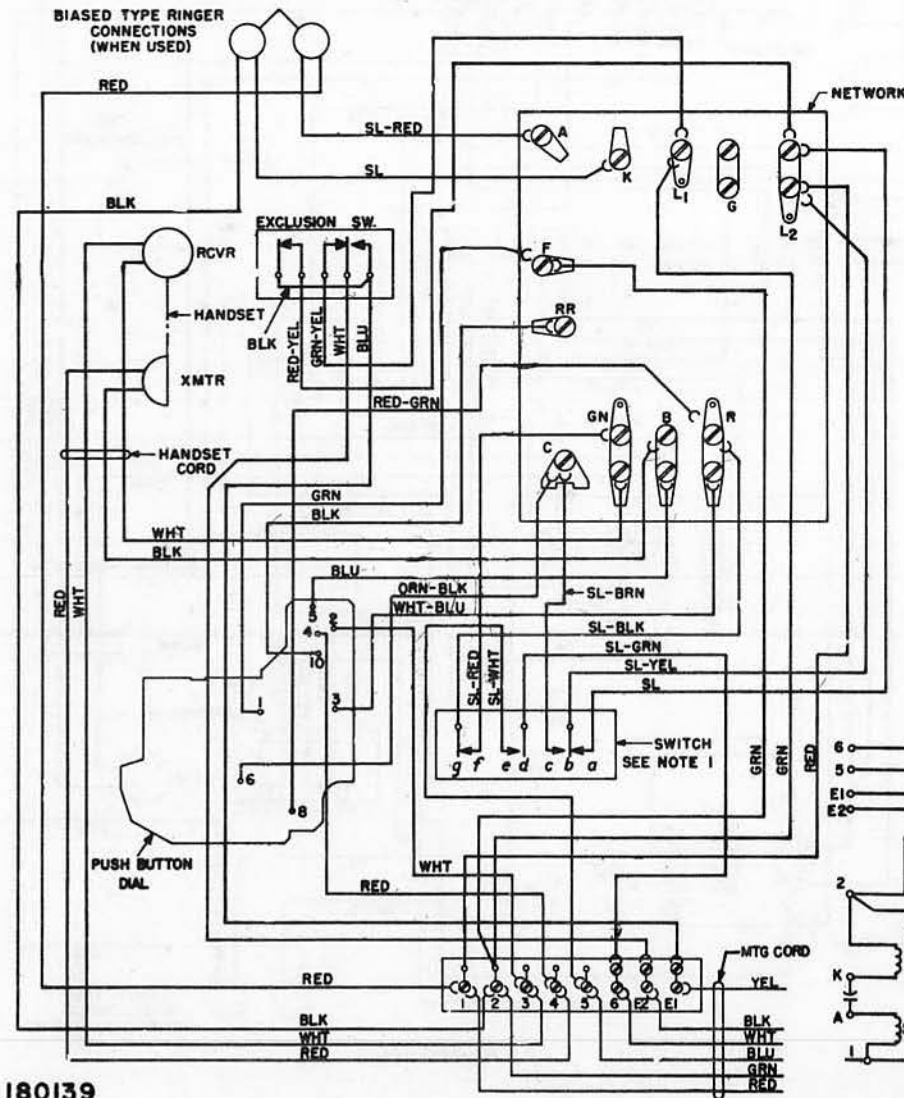
1. RINGER CONNECTED FOR BRIDGED SERVICE. FOR RING PARTY MOVE RINGER (BK) LEAD FROM TERM.1 TO TERM.3. FOR TIP PARTY MOVE RINGER (R) LEAD FROM TERM.2 TO TERM.3.
2. () INDICATES W.E. COLOR CODE.
3. WHEN HANDSET IS REMOVED: CONTACTS (h-i) MAKES BEFORE (d-e) BREAKS. AND (d-e) MAKES (f-g) BREAKS AFTER ALL OTHER OPERATIONS.
4. TAPE AND STORE HOOKSWITCH LEADS SL-BRN, SL-YEL, & SL-WHT WHICH CORRESPONDS TO CONTACTS a, b, c, WHICH ARE NOT USED ON THIS SUBSET.



180132

2502 TYPE TELEPHONE CIRCUIT

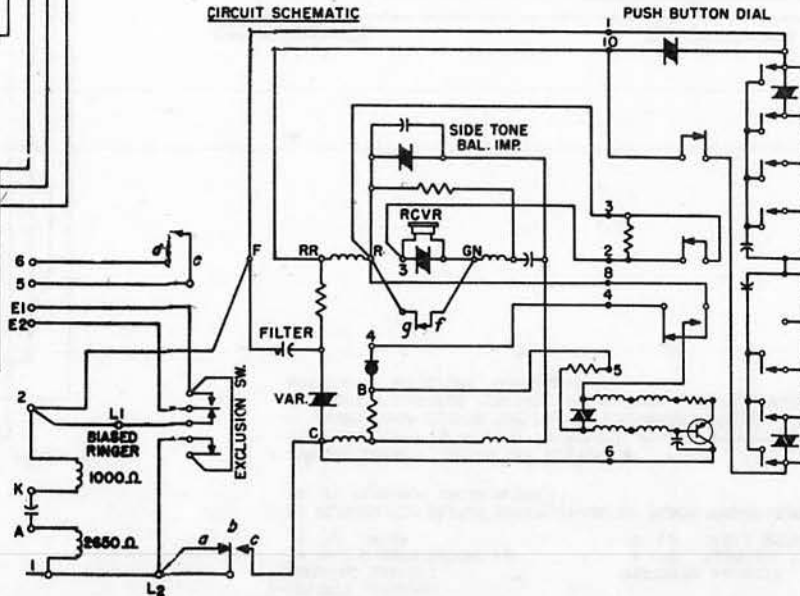
WIRING DIAGRAM



NOTES:

- 1- CONTACT SEQUENCE
 REMOVING HANDSET
 A. *de* CLOSSES BEFORE *cb*
 B. *fg* OPENS
 RESTORING HANDSET
 A. *fg* CLOSSES
 B. *cb* OPENS BEFORE *de*
- 2- TO PERMANENTLY SILENCE RINGER, TRANSFER BLACK RINGER LEAD TO (K) TERMINAL ON NETWORK.
- 3- RINGER CUTOFF CONTROL BY CUSTOMER
 BEND STOP NEXT TO DETENT ON RINGER VOLUME CONTROL SO THAT IT COMPLETELY CLEARS THE RIM OF THE RINGER FRAME. THIS PROVIDES A FURTHER POSITION ON VOLUME CONTROL WHICH PREVENTS ARMATURE MOVEMENT

CIRCUIT SCHEMATIC



180139

2
1
ISSUE
NO.

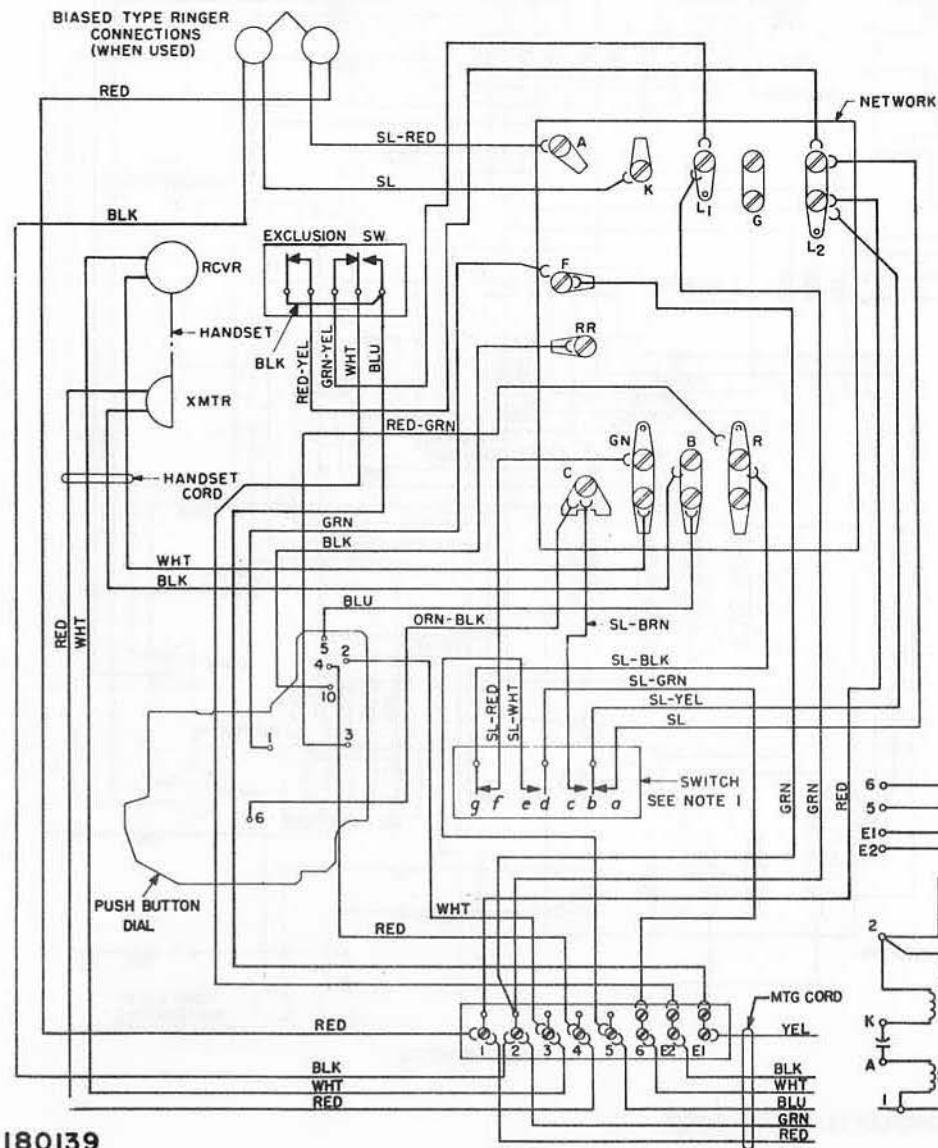
ITT Telecommunications
 APPARATUS DEPARTMENT
 CORINTH, MISSISSIPPI
 A DIVISION OF INTERNATIONAL TELEPHONE AND TELEGRAPH CORPORATION

T1MM-2

Page: 343.17
 Date: 3-74

2502 TYPE TELEPHONE CIRCUIT

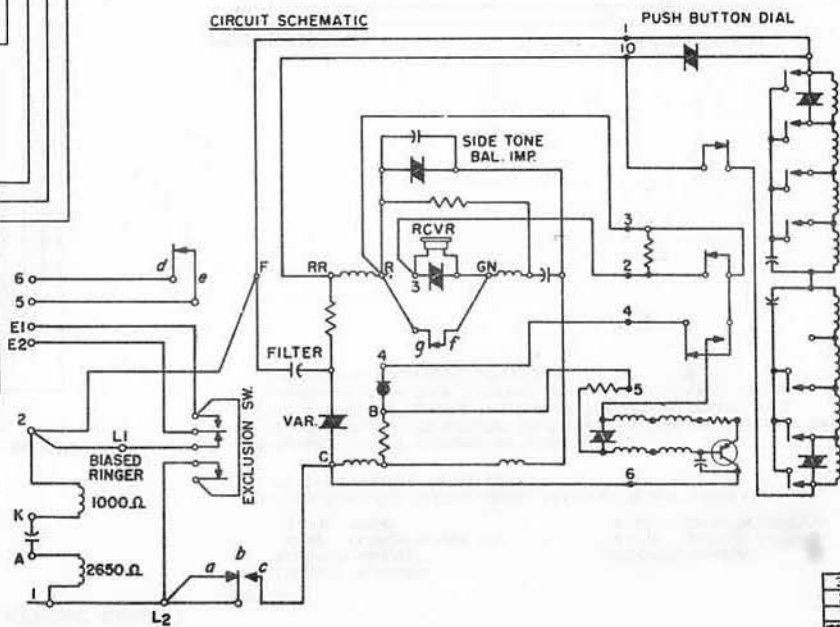
WIRING DIAGRAM



NOTES:

- 1-CONTACT SEQUENCE
REMOVING HANDSET
A. *de* CLOSSES BEFORE *cb*
B. *fg* OPENS
- RESTORING HANDSET
A. *fg* CLOSSES
B. *cb* OPENS BEFORE *de*
- 2-TO PERMANENTLY SILENCE RINGER, TRANSFER BLACK RINGER LEAD TO (K) TERMINAL ON NETWORK.
- 3-RINGER CUTOFF CONTROL BY CUSTOMER
BEND STOP NEXT TO DETENT ON RINGER VOLUME CONTROL SO THAT IT COMPLETELY CLEARS THE RIM OF THE RINGER FRAME. THIS PROVIDES A FURTHER POSITION ON VOLUME CONTROL WHICH PREVENTS ARMATURE MOVEMENT

CIRCUIT SCHEMATIC



3
2
1
ISSUE NO.

180139