

SINGLE-LINE, PUSHBUTTON DIAL, WALL TELEPHONES (STANDARD SIZE) CIRCUIT LABELS

1. GENERAL

1.01 This document covers the single-line, pushbutton dial, standard size, wall telephone. (See Figure 1.) The circuit labels for the various models of single-line, pushbutton dial, standard size, wall telephones and the associated features available in each are included in this document. (See Table A.)



AW86-388

Figure 1: Single-Line, Pushbutton Dial, (Standard Size) Wall Telephone

1.02 This section is reissued for the following reasons:

- (a) Issue 4 provides the latest issue of circuit labels for the Model 3554 telephones.
- (b) Issue 3 provided the latest issue of circuit labels for the Model 3554 telephones.
- (c) Issue 2 added a circuit label for the Model 3554, Types 20T and 21T telephones and

provided the latest issue circuit labels for the Model 3554 telephones.

Note: Some versions of telephones have been manufacturing discontinued; however, circuit labels have been retained as a reference for telephones still in service.

1.03 For additional information on description and installation of the telephones, refer to Section 50-554-103. A replacement parts list and an exploded-view drawing for the telephones are contained in Section 50-554-104. Related documents of the CORTELCO Telephone Apparatus Practices Manual provide information on components.

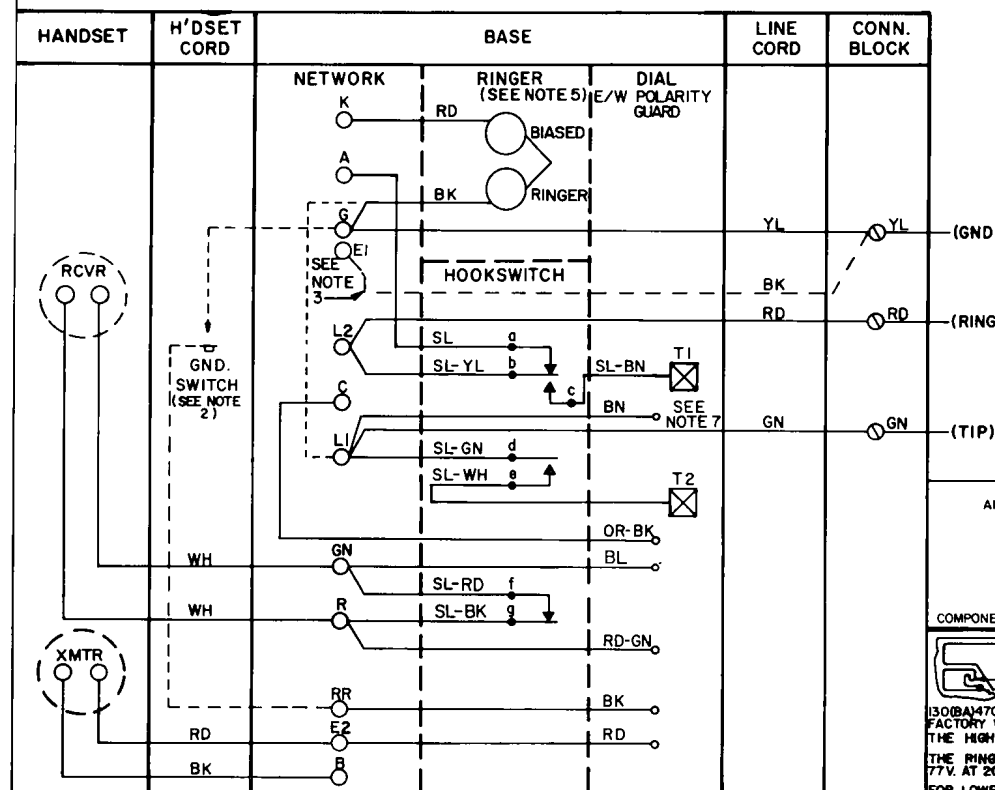
1.04 The Model 3554 wall telephones are single-line, pushbutton dial, anti-sidetone type units that operate efficiently over a wide range of loop resistances and line impedances.

1.05 The Model 3554 wall telephones are identified by a coded label affixed to the bottom of the base plate. Refer to Section 50-554-103 of the CORTELCO Telephone Apparatus Practices Manual for ordering information of complete telephones and for an explanation of each code number.

TABLE A
LIST OF CIRCUIT LABELS

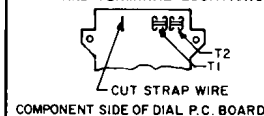
MODEL NO	TYPE NO	FIGURE NO
3554**QBA	20, 21, 27, 28	2
3554**FBA	27, 28	2
3554**MBA	20, 21, 27, 28	2
3554**OBA	30, 31	3
3554**QBA	20	3
3554**FBA	20	3
3554**OBA	30T, 31T	4
3554**QBA	20T	5
3554**FBA	20T	5
3554**MBA	20T, 21T	5
3554**OBA	37, 38	6

AW89-57

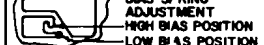


NOTES

- 1 - FOR TIP-PARTY WITH NO IDENTIFYING GROUND MOVE RED RINGER LEAD FROM L2 TO L1 ON NETWORK AS SHOWN IN TABLE A.
- 2 - (a) BROKEN LINES BETWEEN TERMINAL RR AND G INDICATE CIRCUIT FOR TELEPHONE WITH SPECIAL FEATURE 34.
(b) TO PROVIDE GROUNDING FEATURE, REMOVE BLACK RINGER LEAD FROM G AND REPOSITION TO L1.
- 3 - WHEN 4 CONDUCTORS ARE FURNISHED WITH MOUNTING CORD, TERMINATE BLACK CONDUCTOR WITH YELLOW CONDUCTOR AT CONNECTING BLOCK, EXCEPT WHERE USED FOR SPECIAL APPLICATIONS.
- 4 - IF GROUND IS BROUGHT TO CONNECTING BLOCK.
- 5 - WHEN FREQUENCY SELECT RINGERS ARE USED CONNECT RED RINGER LEAD TO L2 ON NETWORK, BLACK RINGER LEAD TO G ON NETWORK AND TAPE AND STORE SLATE AND SLATE-RED RINGER LEADS, EXCEPT FOR 16-25 HZ. RINGERS WHICH CONNECT SAME AS BIASED RINGER.
- 6 - TRANSFER SLATE SWITCH LEAD FROM L2 TO A* TERMINAL ON NETWORK.
- 7 - BROWN LEAD CONNECTED TO DIAL STATIC SHIELD.
- 8 - CONNECT TO TERMINAL 1 ON DIAL.
- 9 - TO DISABLE THE POLARITY GUARD FEATURE CUT THE STRAP WIRE ON THE COMPONENT SIDE OF DIAL P.C. BOARD.

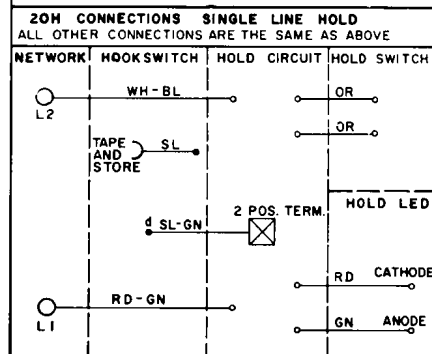
42 TT DIAL P.G. DISABLE
AND TERMINAL LOCATIONS

COMPONENT SIDE OF DIAL P.C. BOARD.

130BA/470 RINGER IS SHIPPED FROM THE
FACTORY WITH THE BIAS SPRING IN
THE HIGH BIAS POSITION.THE RINGER IS ADJUSTED TO RING AT
77V. AT 20 HZ. IN THE HIGH BIAS POS.FOR LOWER VOLTAGES AND 30 HZ. RING-
ING, THE BIAS SPRING MAY REQUIRE MOV-
ING TO THE LOW BIAS POSITION.

NOTES CONT'D.

10.-CONNECT TO TERMINAL 2 ON DIAL.

11.-TABLE A AND TABLE B APPLY TO FOUR-WIRE
130 (OBA) RINGERS ONLY.TABLE B 130 BA RINGER LEAD CON-
NECTIONS TO SILENCE RINGER PERMANENTLY

TIP PARTY IDENTIFYING GROUND	RED	BK	SL	SL-RD
1000 OHMS	K	G	B	K
2650 OHMS	B	K	K	G

WIRE OR LEAD	INDV OR BRDG	RINGER PARTY	NO IDENT GND.	TIP PARTY 1000 OHMS	2650 OHMS
MOUNTING CORD IN SET	RD	L2	L2	L1	L1
	GN	L1	L1	L2	L2
	YL	G	G	G	G
	RD	L2	L2	L1	K
	BK	G	G	G	B
	SL	K	K	B	K
	SL-RD	A	A	B	G
HOOKEWITCH LEADS	SL	L2	L2	A	A
	SL-WH	NOTE 10	NOTE 10	NOTE 10	NOTE 10
	SL-BN	NOTE 8	NOTE 8	NOTE 8	NOTE 10
MOUNTING CORD AT CONN. BLOCK	RD	R	R	R	G
	GN	G	G	G	R
	YL	G	Y	Y	Y
LINE WIRE/RING AT CONN. BLOCK	RD	R	R	R	G
	G	G	G	G	R
	GN	Y	Y	Y	Y

TABLE C
CONNECTIONS FOR 156-157 FREQUENCY SELECTIVE RINGER

CLASS OF SERVICE	CONNECTIONS AT CONNECTING BLOCK						CONNECTIONS IN SET			
	LINE			MTG CORD			RINGER LEADS			
	RING	TIP	GND	RD	GN	YL	RD	BK	SL	SL-RD
BRIDGED	R	G	Y NOTE 4	R	G	G	L2	G	NOTE 5	NOTE 5
RINGER PARTY	R	G	Y	R	G	Y	L2	G	NOTE 5	NOTE 5
TIP PARTY	R	G	Y	R	G	Y	L2	G	NOTE 5	NOTE 5
TIP PARTY DIAL MESSAGE RATE 1000 OHM SEE NOTE	R	G	Y	G	R	Y	A	G	B	NOTE 5
TIP PARTY DIAL MESSAGE RATE 2650 OHMS SEE NOTE 6.	R	G	Y	G	R	Y	G	A	NOTE 5	B

Figure 3: Circuit Label, Model 3554** OBA Types 30, 31; Model 3554** QBA Type 20; Model 3554** FBA Type 20

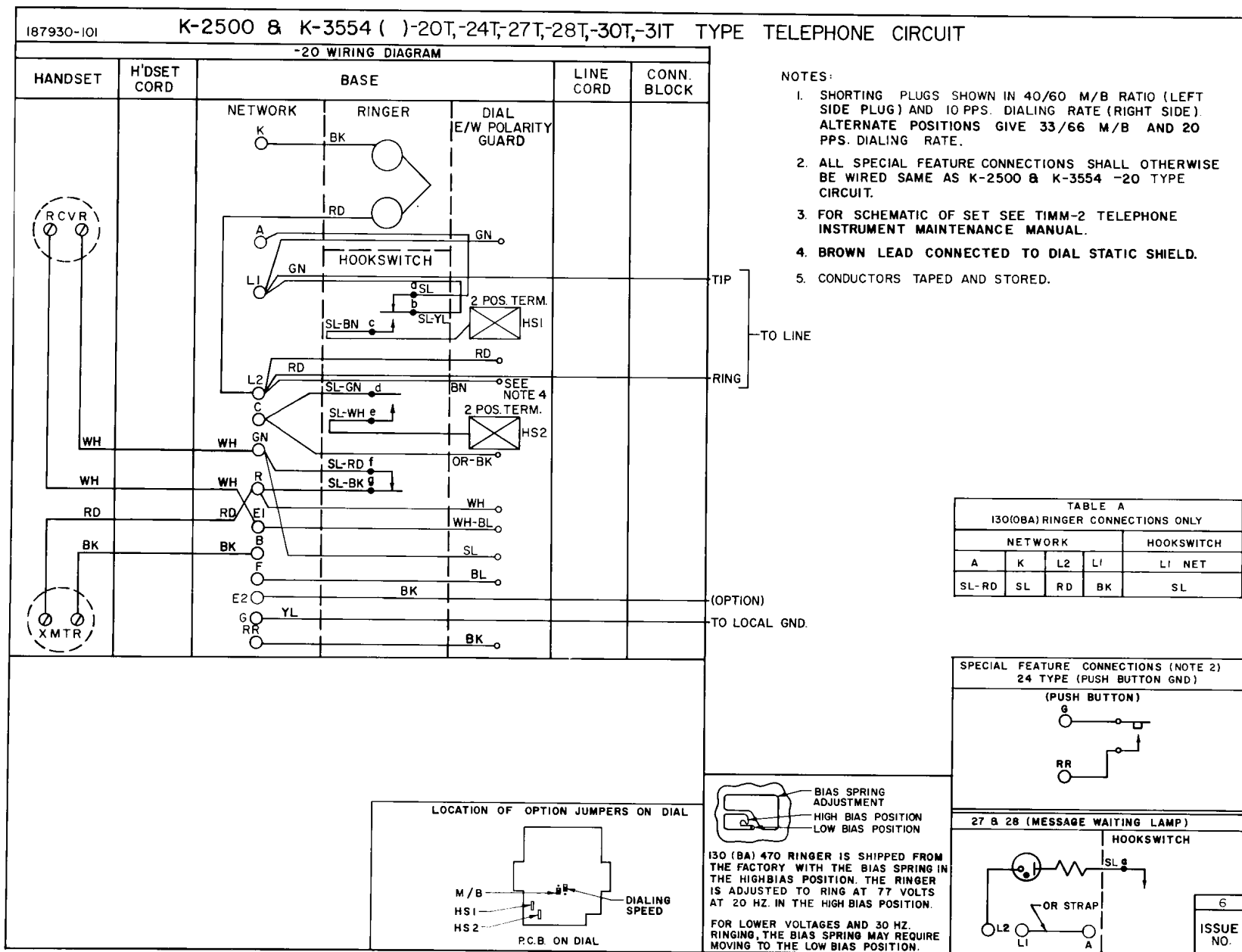


Figure 4: Circuit Label, Model 3554** OBA Types 30T, 31T

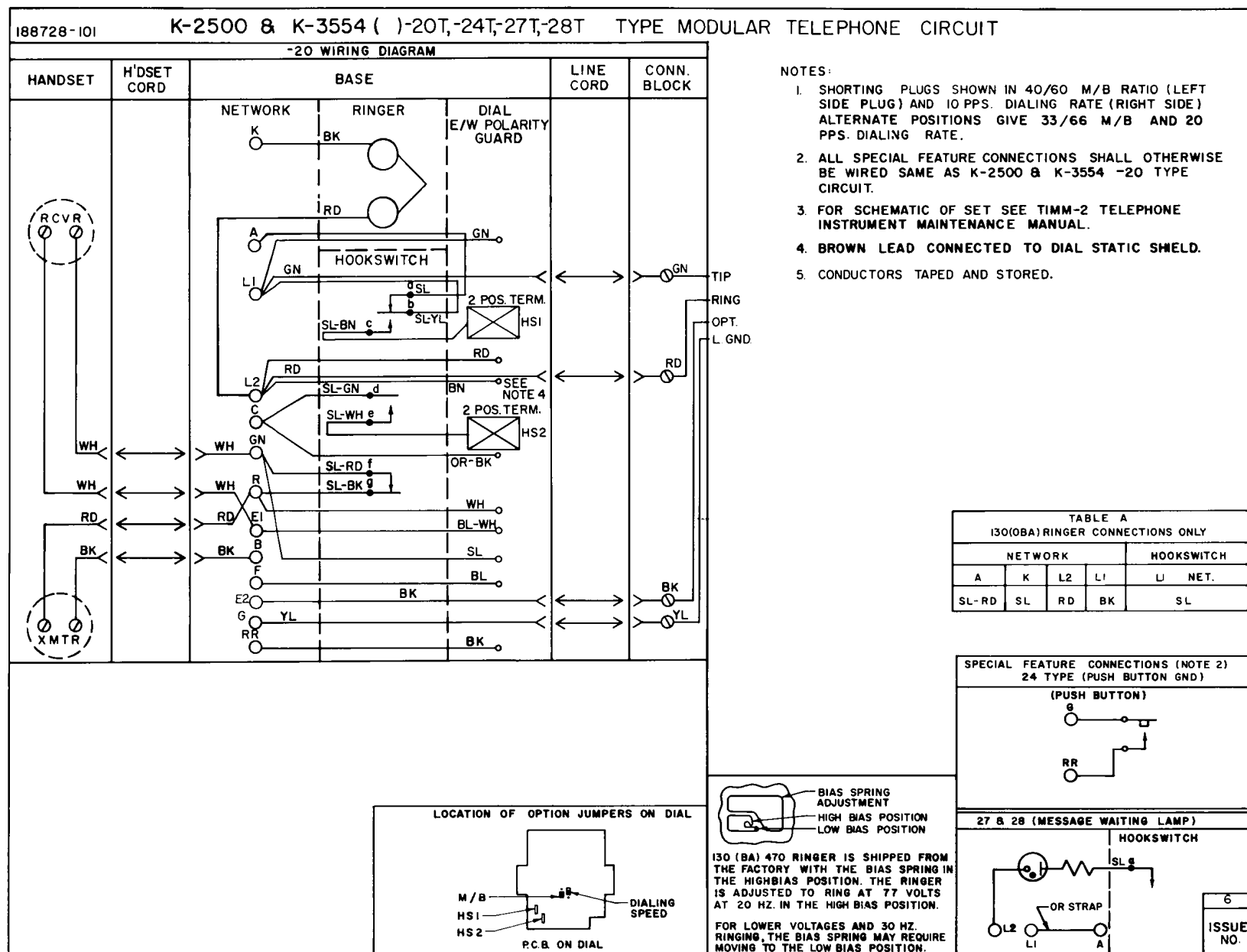


Figure 5: Circuit Label, Model 3554** QBA Type 20T; Model 3554** FBA Type 20T; Model 3554** MBA Types 20T, 21T

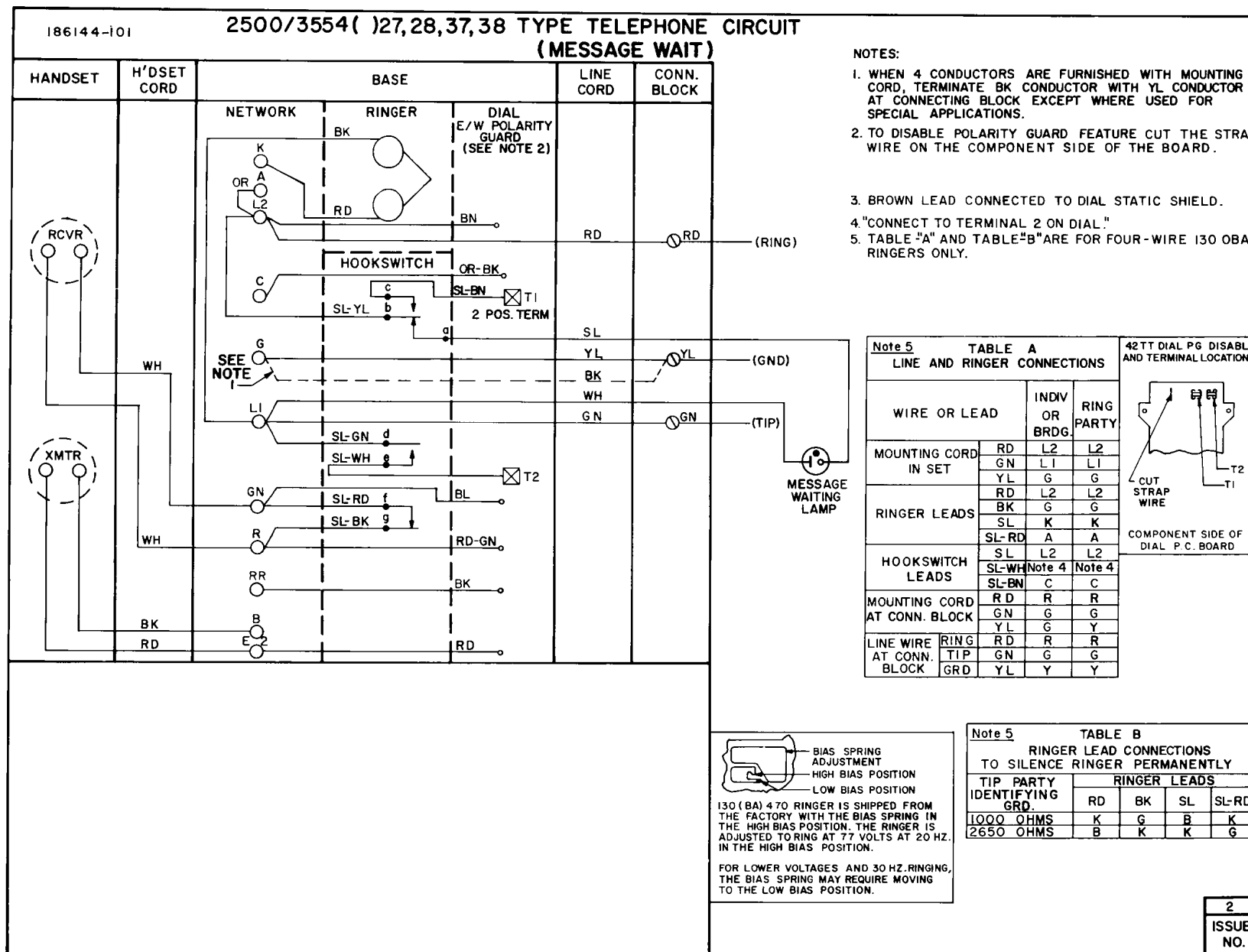


Figure 6: Circuit Label, Model 3554** OBA, Types 37, 38