

INSTALLATION

Type 183 Suspension Handset

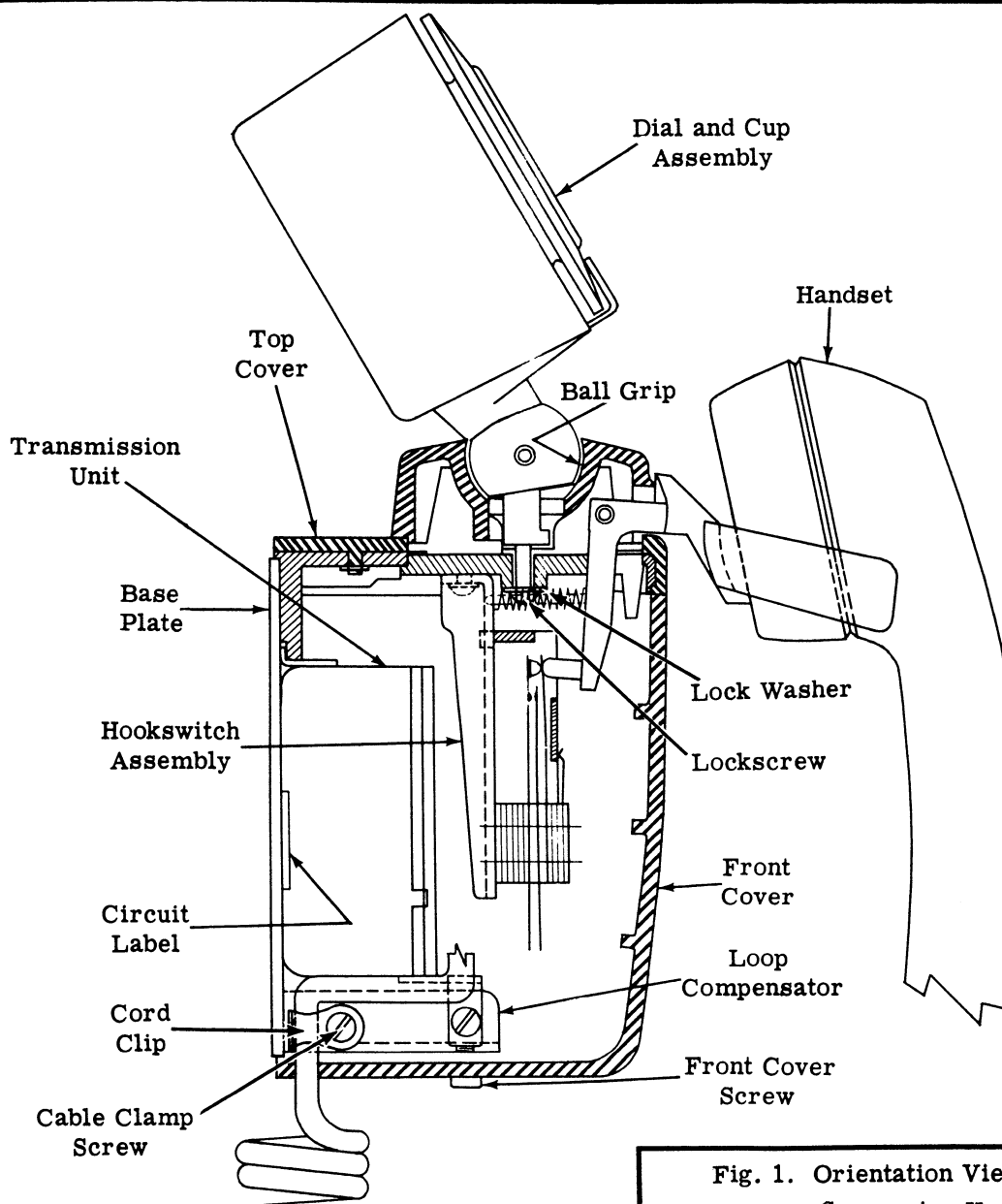


Fig. 1. Orientation View of a Type 183 Suspension Handset.

1. GENERAL

1.01 The 183 telephone set consists of a handset attached by a retractile cord to the base. The base houses a 360° movable dial, ball socket, seven position handset cradle, hook-switch, induction coil, capacitors, loop com-

pensator, terminal strip, and front and top covers. See Fig. 1.

1.02 The type 183 can be used as a complete telephone set by including a ringer box. It can also be used as an extension telephone set with or without a ringer box.

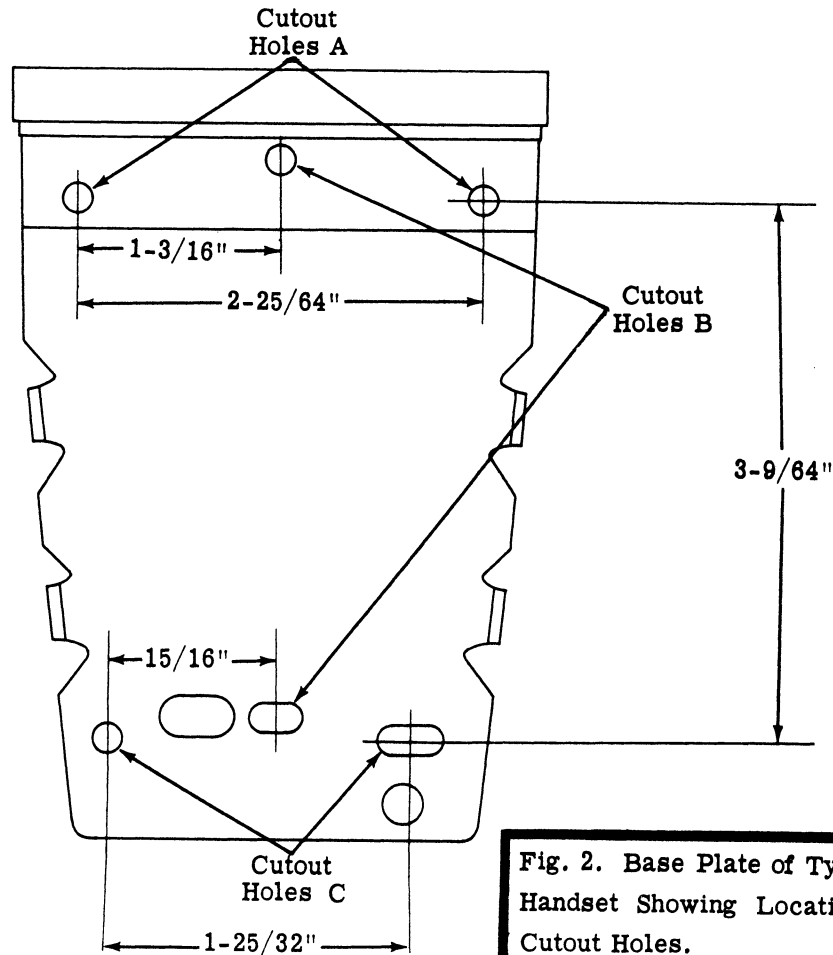


Fig. 2. Base Plate of Type 183 Handset Showing Location of Cutout Holes.

2. SUPPLIES AND SPECIAL TOOLS

- 2.01 (1) A.E. Co., Type 183 Telephone Set
- 2.02 (*) A.E. Co., 32A Ringer Box
- 2.03 (1) P & C Phillips 6 inch Screwdriver #674 (or similar)

3. INSTALLATION

- 3.01 Remove the front cover of the telephone set as follows:

- A. Remove the two screws located at the bottom of the telephone set.
- B. Carefully slide the cover away and down from the top cover.

Desk Mounting

- 3.02 For desk mounting, the preferred position is the rear left corner. From this position both the dial and handset cradle may be adjusted to the customer's preference.

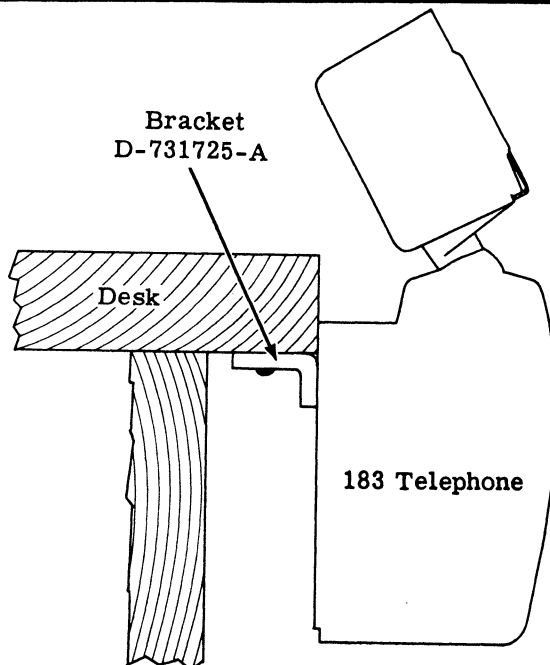


Fig. 3. Type 183 Handset Attached to Desk.

3.03 For mounting in this position, the base plate has two cutout holes (marked A in Fig. 2). With two screws, mount the base plate on the side of the desk.

Desk Mounting With Mounting Bracket

3.04 When using mounting bracket D-731725A, use cutout holes marked A in Fig. 2. Use the two #8-32x1/4 screws supplied with the bracket. Insert the screws inside the telephone and screw into the bracket. Tighten screws securely and attach bracket to desk with two screws. See Fig. 3.

Wall Mounting

3.05 For mounting the 183 type set on a wall or other flat surface use four cutout holes marked A and C in Fig. 2, and four screws.

3.06 Put one screw through either of the two top holes (A). Put the second screw through the slotted hole (C) at the bottom of the base plate. Position the telephone so it is exactly vertical and tighten both screws. Place and tighten the two remaining screws.

3.07 When masonry anchors or toggle bolts are to be used, the mounting hole spacing dimensions shown in Fig. 2 will give the drilling layout.

Electrical Outlet Box Mountings

3.08 If the type 183 telephone is to be mounted to an electrical outlet box, cutout holes B in Fig. 2 are used.

Dial Positioning

3.09 To adjust the dial position proceed as follows:

A. Loosen (but do not remove) the lock screw just below the dial grip and ball. See Fig. 1.

B. Set dial in desired position.

C. Retighten the lock screw.

Note: Caution must be used to avoid excessive twisting of dial wires during positioning of dial.

Handset Cradle Positioning

3.10 To set the handset cradle in the desired position, proceed as follows:

A. Loosen lock screw (do not remove). See Fig. 1.

B. Carefully pull up on the handset cradle.

C. When the cradle is free of the lock-stud, turn to desired position.

D. If the cradle is properly aligned with one of the seven positions, it will drop in place and lock.

E. Retighten the lock screw.

Note: Both dial and cradle positioning is done without removal of the top cover.

4. CONNECTIONS

4.01 See Figs. 4, 5 and 6 for methods of connecting type 183 telephones.

5. **LOOP COMPENSATING RHEOSTAT SETTINGS**

5.01 Compensating rheostat settings for the 183 telephone set are as follows:

- A. For individual or party line service in zones 3 and 5, set rheostat firmly against the stop at 0.
- B. For type 183 sets installed in zone 2, set compensating rheostat midway between 2 and 3.

5.02 Compensating rheostat settings for dial PBX service are as follows:

- A. For stations in the same building with a 48 volt PBX, set on 4.
- B. For stations in same building with 24 volt PBX, set on 0.
- C. For stations installed in buildings other than the one in which the dial PBX is located, refer to Form P851 for required setting.

5.03 For PBX service, the setting will be specified on Form P851 by the Area Special Service Group.

Notes:

- 1. If no ringer is used connect line directly to telephone.
- 2. If no dial is used connect yellow and blue dial wires to terminal 2, white to terminal 3, and red to terminal 1 of dial blank. See Fig. 6.
- 3. When SATT dial is used, modify wiring per Fig. 6.

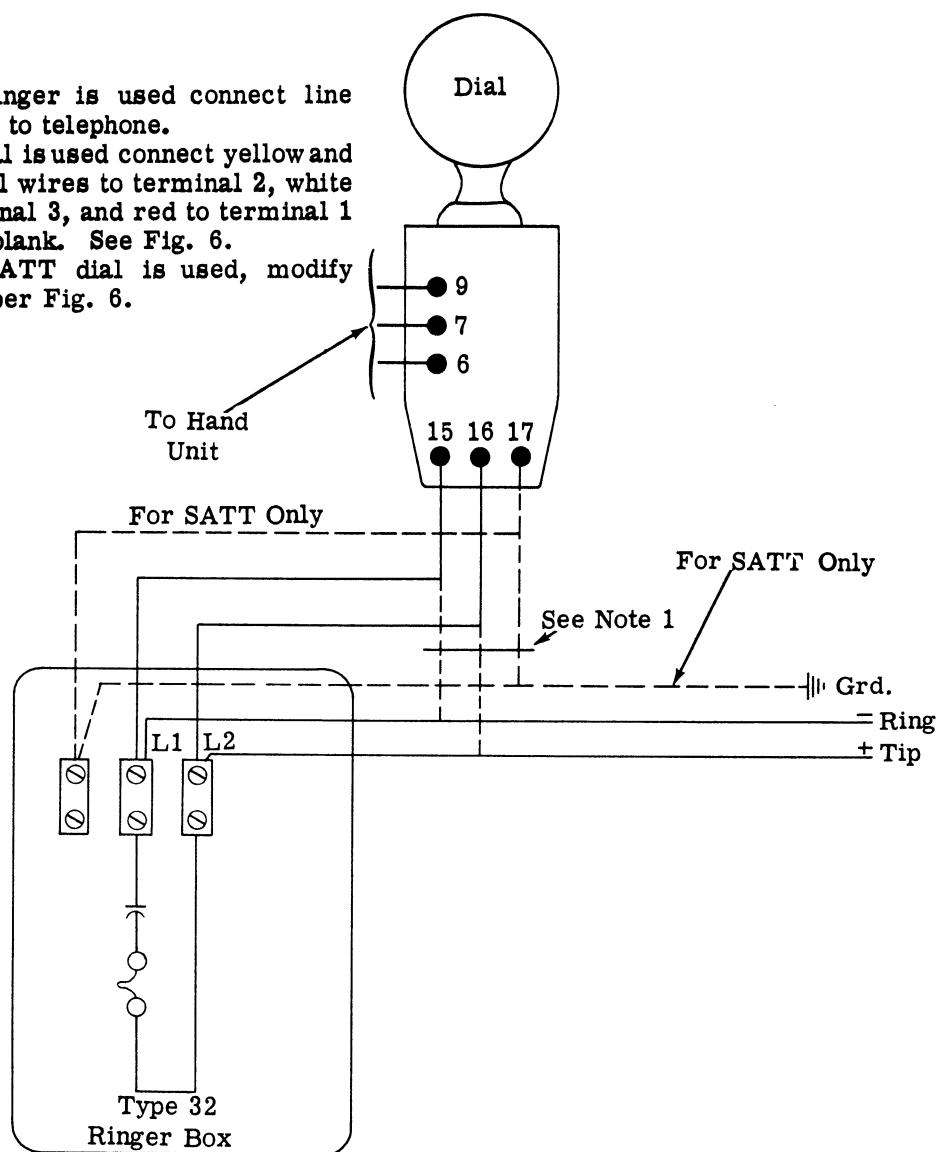
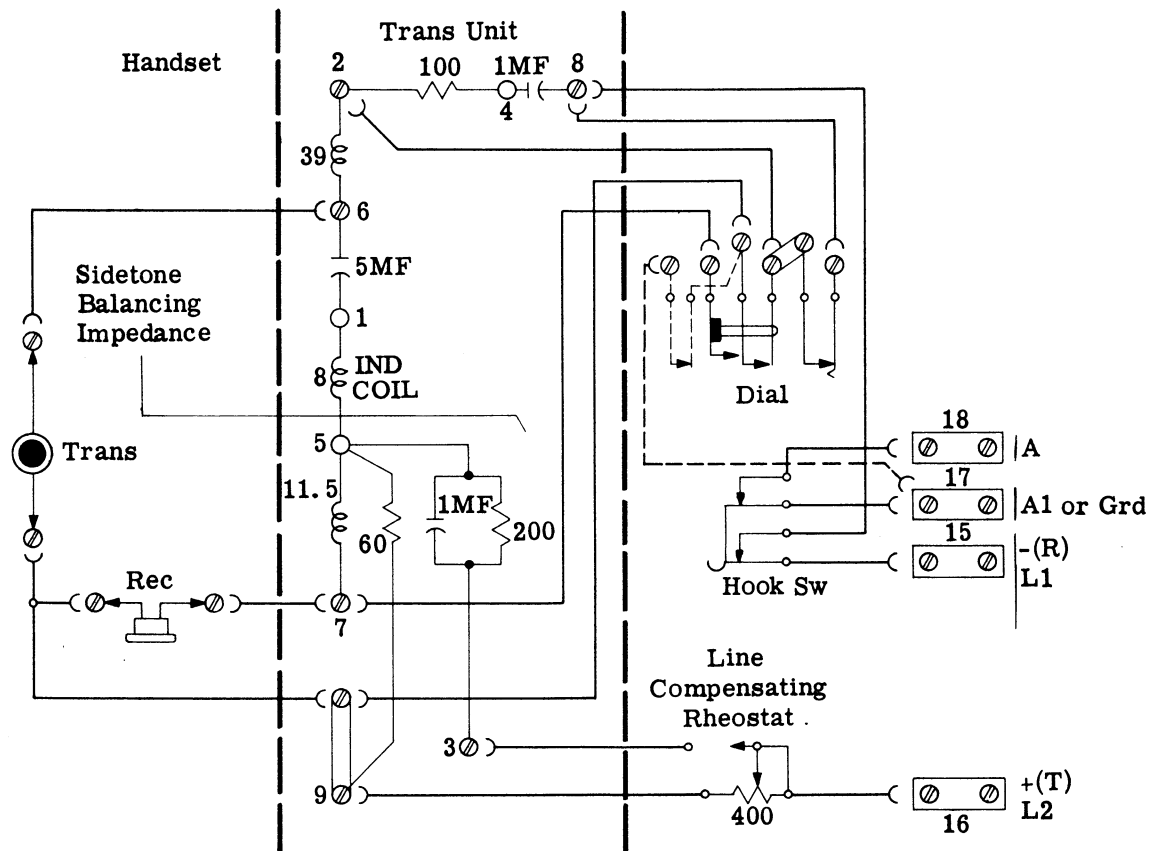


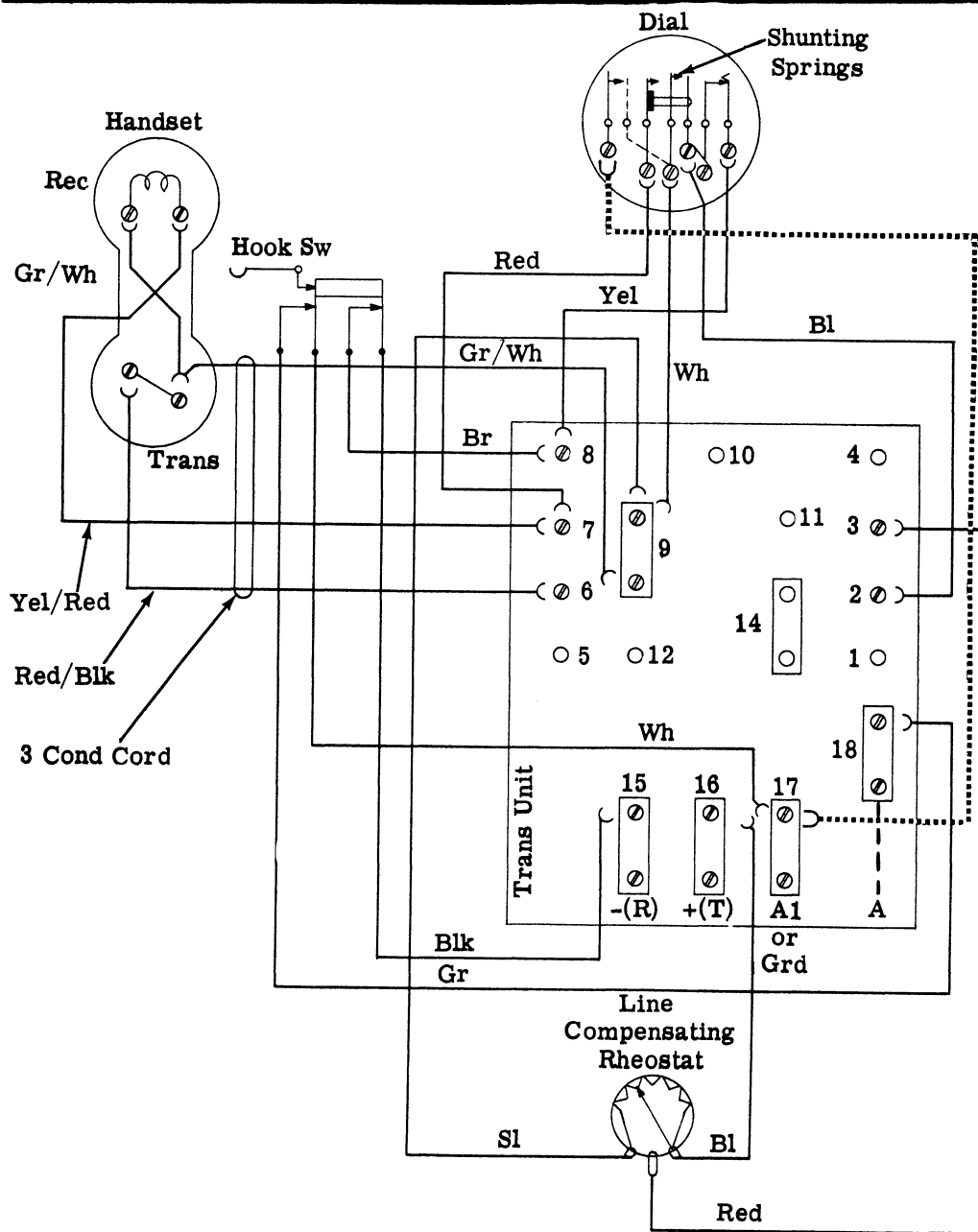
Fig. 4. Shows Type 183 Telephone Connections When Used With a Ringer Box.



Notes:

1. When SATT dial is used, remove white wire from terminal 17. Fold back and tape. Place strap (dashed line) from terminal 17 to dial. Connect -(R) to 15, +(T) to 16 and ground to 17.
2. For 10A1 key systems, connect -(R) to 15, +(T) to 16, A1 to 17, and A to 18.

Fig. 5. Circuit Schematic of Type 183 Telephone Set.



Notes:

1. If no dial is used, connect yellow and blue wires to terminal 2, white wire to terminal 3, and red to terminal 1 of dial blank.
2. When SATT dial is used, remove white wire from terminal 17. Fold back and tape. Place strap (dashed line) from terminal 17 to dial. Connect -(R) to 15, +(T) to 16 and ground to 17.
3. For 10A1 key systems, connect -(R) to 15, +(T) to 16, A1 to 17, and A to 18.

Fig. 6. Wiring Diagram for Type 183 Telephone Set.