

A.E.CO. PANEL COIN TELEPHONE
DESCRIPTION

1. GENERAL

1.01 The A.E.Co. Panel Coin Telephone consists of a housing with a stainless steel cover and a coin telephone. This section describes the housing and the way in which the coin telephone is mounted in the housing. Descriptive information for coin telephones is provided in the 476-200 series of General System Practices.

2. DESCRIPTION

2.01 The panel assembly has a stainless steel hinged front cover upon which are mounted a hookswitch, handset, handset cord, two card brackets, and either a dial (see Figure 1) or Touch Calling unit (see Figure 2). Coin slots in the panel assembly door provide access to a coin diverter mechanism which directs coins to the coin chute of the coin telephone mounted directly behind the door (see Figure 3). The coin telephone

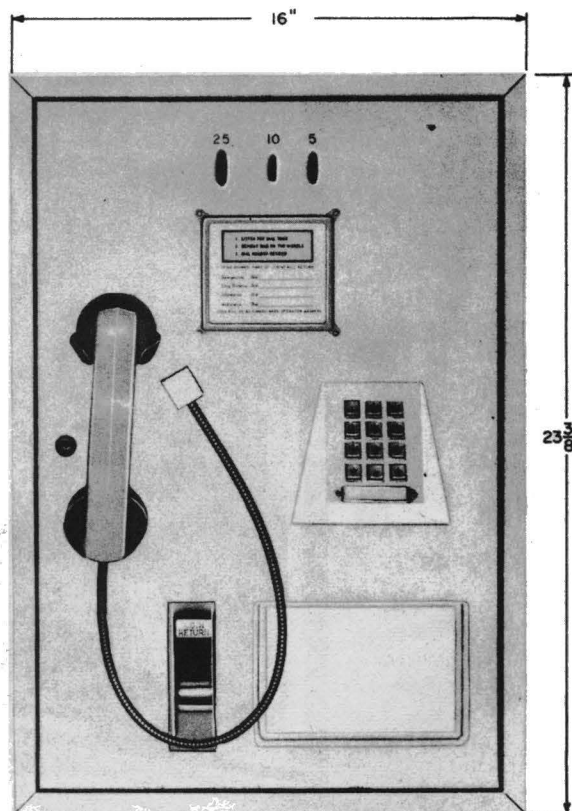


Figure 2. Panel Coin Telephone - Touch Calling Unit Equipped.

is not equipped with a hookswitch, dial (or Touch Calling unit), handset, or coin gauge. A wiring harness and 10-terminal terminal strip are used to connect the coin telephone to the components mounted on the panel assembly door (see Figure 3). A standard coin telephone upper housing key operates the lock on the door. The handset, dial, and cardholders are available in either black, white, or blue. The panel assembly is 23-3/8 inches high and 16 inches wide.

2.02 The panel coin telephone can be mounted on a wall surface, recessed in the wall, or mounted in a Model 50 or 50-S Indoor Booth. A stainless steel surface enclosure, which covers four sides of the panel assembly is used with a wall-surface mounted panel. A rough-in box for protection from dust is required for wall-recess mounted panels and a top cover is used when installing the panel in an indoor booth.

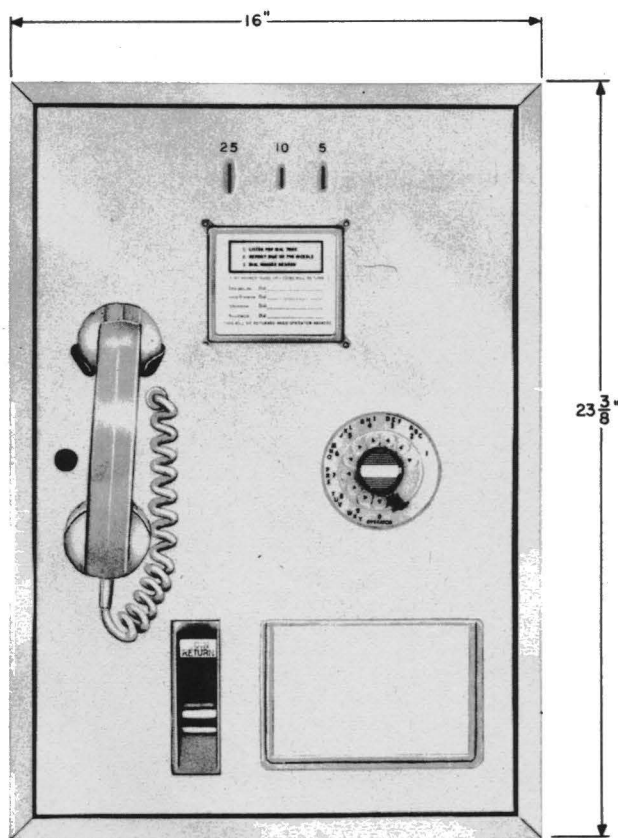


Figure 1. Panel Coin Telephone - Dial Equipped.

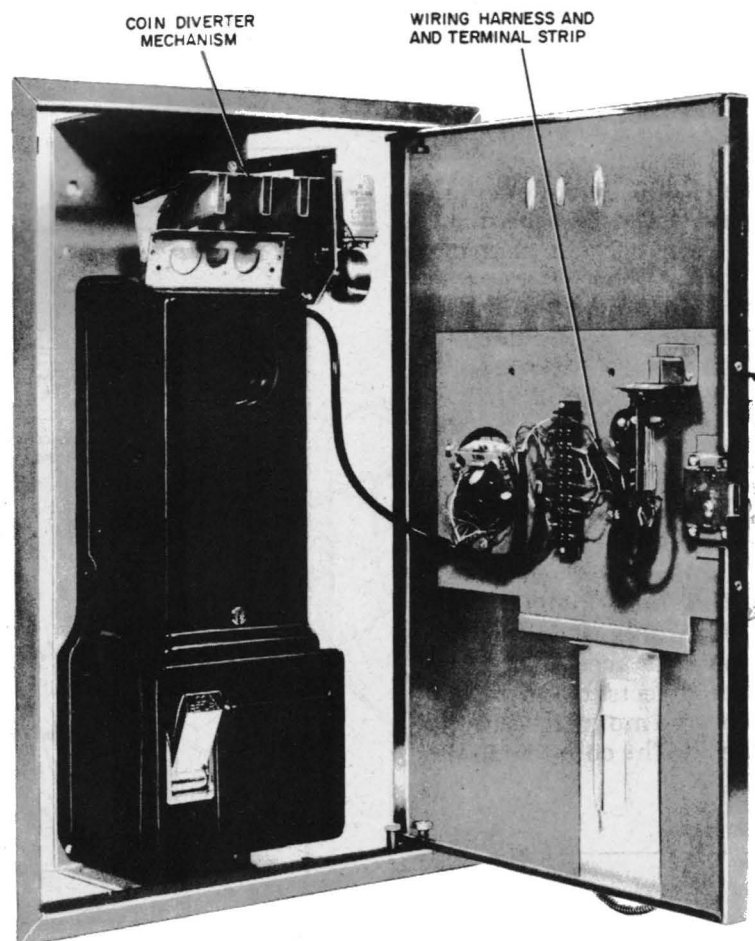


Figure 3. Coin Telephone and Panel Mounted Components.

GTE AUTOMATIC ELECTRIC 101 PANEL TELEPHONE SET
INSTALLATION

1. GENERAL

1.01 This addendum is issued to provide information for the installation of a cover plate when a type 101 panel coin telephone set is removed from an installation.

1.02 Microfiche Copy Recipients. Remove Issue 4 of this practice and replace it with the microfiche copy identified as Issue 4, Addendum 1.

1.03 Paper Copy Recipients. In ink or red pencil make the changes indicated in part 2 of this addendum. Write "See Addendum" in the margin next to each change. File this addendum directly in front of the addended practice.

2. CHANGES

2.01 In the table of contents, add "Part 5 INSTALLING COVER PLATE."

2.02 After part 4, add the following:

5. INSTALLING COVER PLATE

5.01 If the coin telephone set is removed from the enclosure, the B-D 803 rough-in box should be covered by a cover plate (SMC 426429). The cover plate is furnished with two support brackets, four support bracket mounting screws, and four cover plate mounting screws. Use the following procedures:

- (a) Unlock and remove the coin telephone set upper housing. Disconnect the telephone set wiring and remove the telephone set and panel assembly from the B-D 803 rough-in box.
- (b) Install the cover plate support brackets as shown in Figure 7 (furnished with this addendum).
- (c) Install the cover plate as shown in Figure 7.

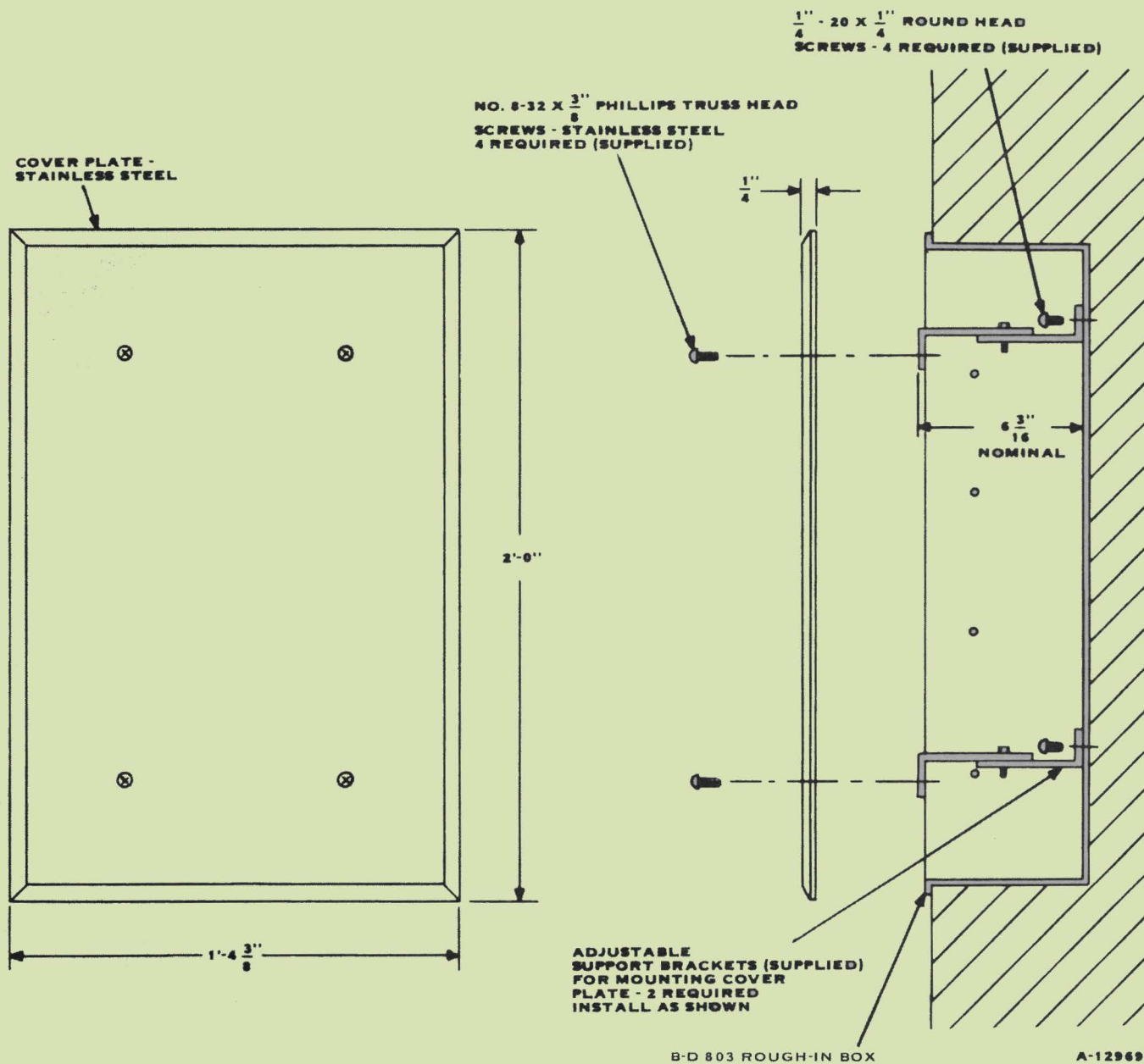


Figure 7. Installation of Cover Plate.

GTE AUTOMATIC ELECTRIC 101 PANEL COIN TELEPHONE SET INSTALLATION

CONTENTS	PAGE
1. GENERAL	1
2. ENCLOSURES	1
3. INSTALLATION	1
Wall-Surface Mounting	1
Wall-Recess Mounting	2
Indoor Booth Mounting	5
4. INSTALLATION TESTS	5

1. GENERAL

1.01 This section provides installation instructions for the GTE Automatic Electric 101 Panel Coin Telephone Set. Instructions are provided for panel coin telephones equipped with either a rotary dial or Touch Calling unit.

1.02 This section is being reissued to up-date the installation procedures, provide new circuit diagrams and to make various corrections. Because of the extensive changes, marginal arrows have been omitted. Remove and destroy Issue 3 and Addendum Issue 1 of this practice and file Issue 4 in their place.

2. ENCLOSURES

2.01 The panel coin telephone set must be installed in a metal enclosure to prevent dust or other debris from entering into the components of the telephone set. Various enclosures are available which meet these requirements.

2.02 The enclosure required depends upon the type of installation desired, that is, surface mounted, wall recess mounted or booth mounted. The enclosures for the various types of installation are:

- (a) 424102—Stainless Steel enclosure for surface mounting.
- (b) 424101—Enclosure for wall-recess installations.

(c) BN858A-3C-W12 (410683) Walk-up, wall-mounted booth.

(d) BN858A-3C-12P (410686) Walk-up, post-mounted booth.

3. INSTALLATION

Wall-Surface Mounting

3.01 Use the following procedures to install a surface mounted enclosure and panel coin telephone set.

- (1) Procure surface mounted enclosure (424102), Figure 1.
- (2) Place the enclosure in position on a wall with the lower edge of the enclosure 47 inches above the surface upon which the user will stand.
- (3) Extend the station wires and #14 AWG ground wire in through the rear of the enclosure. The wire extending into the enclosure should be at least eight inches long.
- (4) Fasten the enclosure to the wall using appropriate fasteners, referring to Figure 1 for mounting hole location.
- (5) Unlock and open the door of the panel assembly, Figure 2, of the panel coin telephone.
- (6) Unlock and remove the panel coin telephone set upper housing.
- (7) Remove the 1/4-20 by 1/2 inch mounting screws that secure the lower housing to the rear panel. Remove the lower housing and retain the screws.
- (8) Place the rear panel of the panel assembly in position in the enclosure and extend the station wires and ground wire through the wire opening located in the rear panel. Secure the

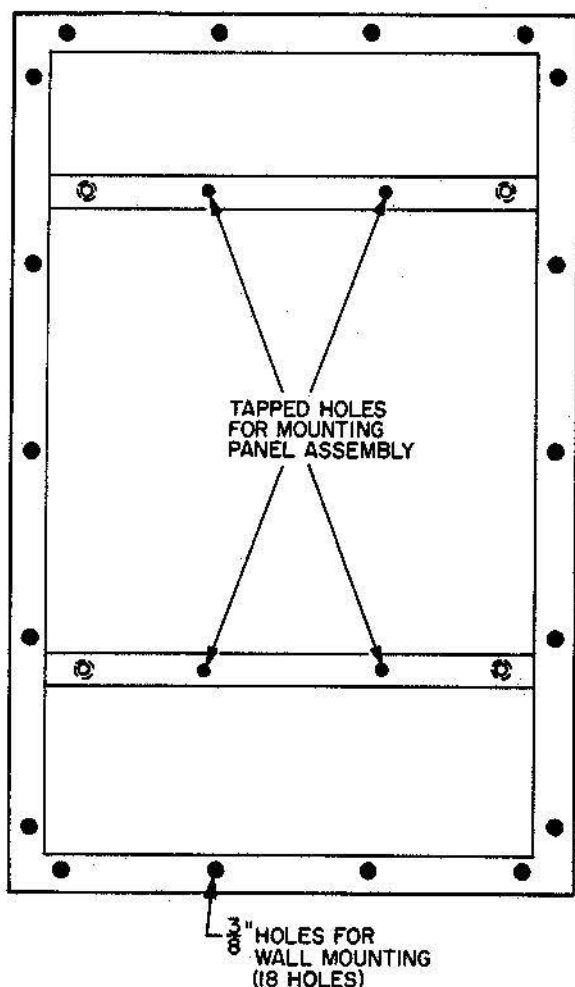


Figure 1. Hole Location Surface Mounting Enclosure 424102.

rear panel and consequently the panel assembly to the enclosure with four 1/4-20 by 1/2 inch screws through the holes, designated B in Figure 3. The screws engage the tapped holes in the rear straps of the enclosure.

- (9) Remove the cash compartment cover from the panel coin telephone set lower housing.
- (10) Extend the station wires and ground wire into the lower housing through the wire hole located on the back.
- (11) Attach the lower housing to the rear panel of the panel assembly using the eight screws furnished with the panel

coin telephone. Two of the screws were removed from the lower housing in (7) and the other six are packed with the panel assembly in a sack. The holes designated A, in Figure 3, are used for this procedure.

- (12) Connect the red station wire to terminal strip terminal L1 and the green wire to terminal L2 of the terminal block located in the lower housing.
- (13) Ground the panel coin telephone set according to instructions in the 476-200 series of GTE Practices.
- (14) Perform the installation tests described in Part 4.
- (15) Replace the upper housing and cash compartment cover.
- (16) Close the panel assembly door.

Wall-Recess Mounting

3.02 Use the following procedures for mounting the 424101 wall recess enclosure and the panel coin telephone set in a wall-recess installation:

- (1) Construct a wood-frame opening in the wall as shown in Figure 4.
- (2) Extend the station wires and #14 AWG ground wire to the enclosure. The wires can be extended through conduit, if so desired or can be exposed within the wall. The enclosures are equipped with conduit knockout holes at the top and the bottom of the enclosure. The wires can also be extended to the telephone set through the wire hole which is located in the back of the enclosure.
- (3) Fasten the enclosure to the frame with applicable fasteners.
- (4) Unlock and open the door of the panel assembly (Figure 2) of the panel coin telephone.

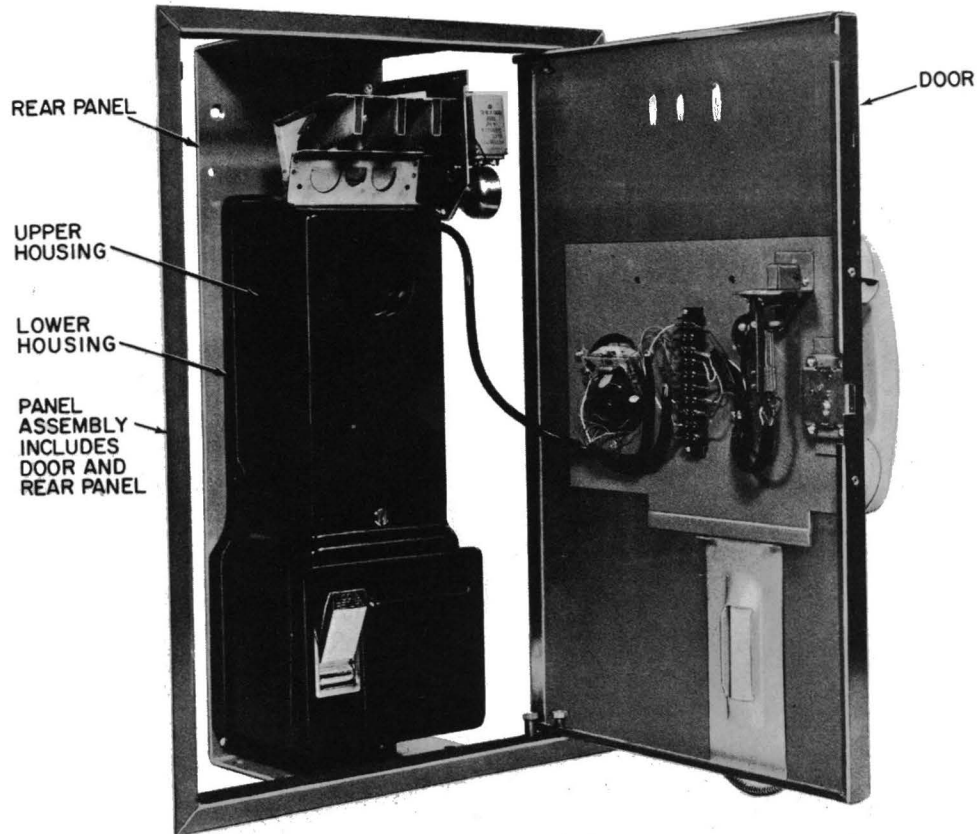


Figure 2. Coin Telephone and Panel Mounted Components.

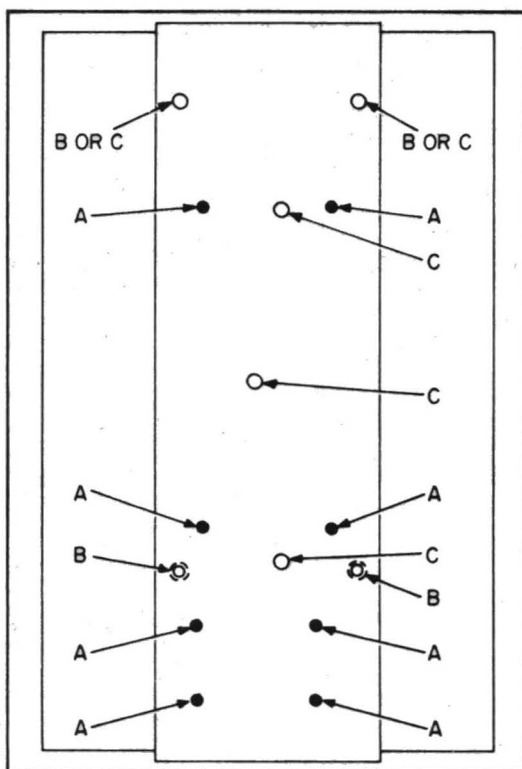


Figure 3. Hole Locations, Rear Panel.

- (5) Unlock and remove the panel coin telephone upper housing.
- (6) Remove the 1/4-20 by 1/2 inch mounting screws that secure the coin telephone lower housing to the rear panel. Remove the lower housing and retain the screws.
- (7) Place the rear panel of the panel assembly in position in the enclosure and extend the station wires and ground wire through the wire opening located in the rear panel. Secure the rear panel and consequently the panel assembly to the enclosure by installing five 1/4-20 by 1/2 inch screws through the holes in the rear panel (marked C in Figure 3) into the rear of the enclosure.
- (8) Remove the cash compartment cover from the panel coin telephone lower housing.

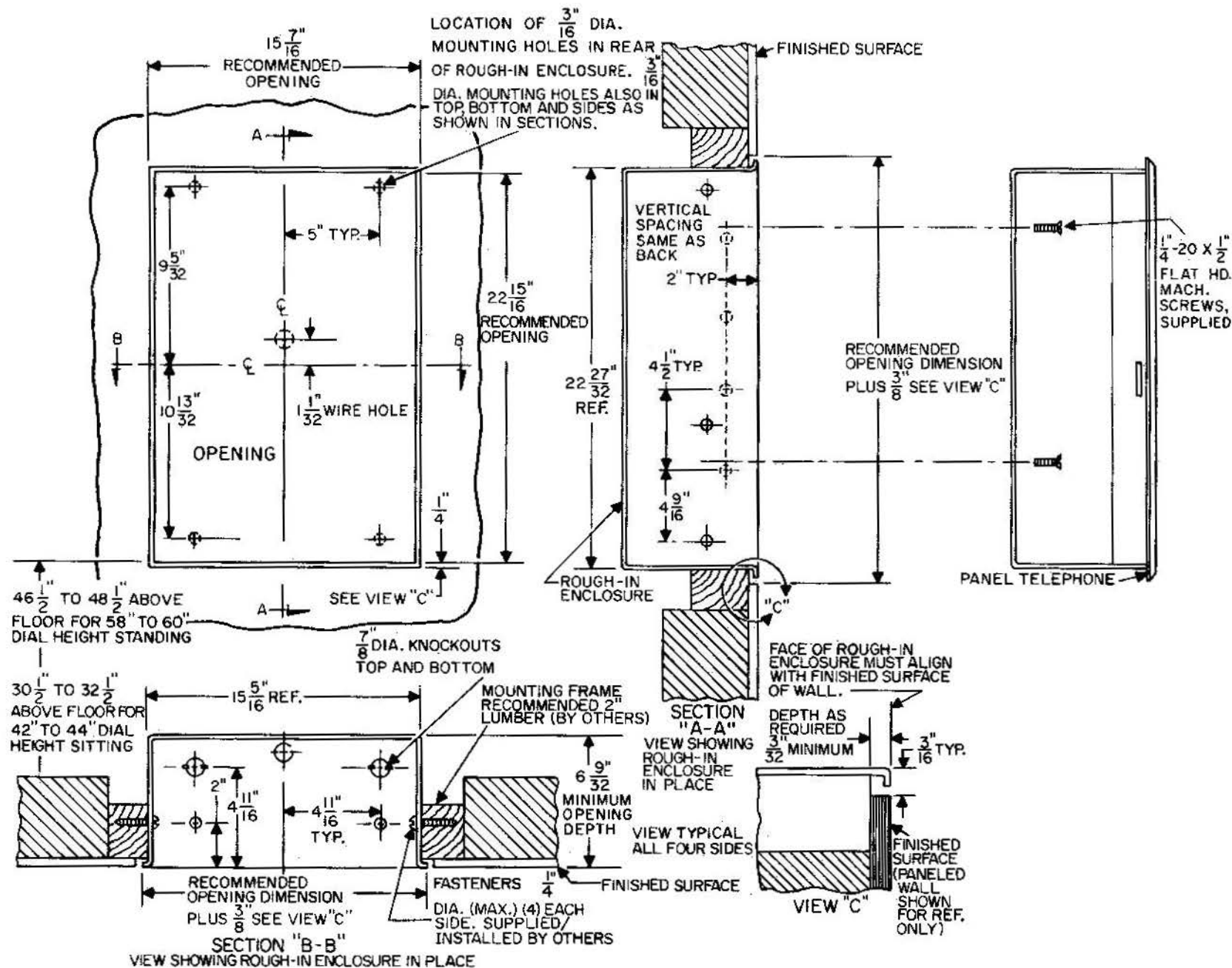


Figure 4. Typical Installation, Wall-Recess Enclosure.

- (9) Attach the lower housing of the panel coin telephone to the rear panel of the panel assembly using the eight 1/4-20 by 1/2 inch screws furnished with the panel coin telephone. Two of the screws were removed from the lower housing in (6), and the other six are packed with the panel assembly in a small sack. The holes marked A in Figure 3 are used for this procedure.
- (10) Connect the red station wire to terminal strip terminal L1 and the green station wire to terminal L2 of the terminal block in the lower housing referring to wiring diagrams Figures 5 or 6. The panel coin telephone must be grounded according to the instructions contained in the 476-200 series of GTE Practices.
- (11) Perform the installation tests described in Part 4.
- (12) Replace the cash compartment and lock the panel assembly door.

Indoor Booth Mounting

- 3.03 The panel coin telephone can be installed in a BN858A Booth (410683).

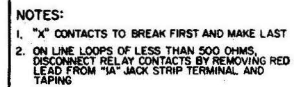
3.04 Use the procedures described in the 476-505 series of GTE Practices for installing the BN858A Booth. Use the procedures described in Paragraphs 3.05 for the installation of the panel coin telephone into this booth.

3.05 Use the following procedures to install the panel coin telephone into the BN858A Booth.

- (a) Follow the procedures described in Paragraph 3.01 (5) through (16) to install the panel coin telephone into the BN858A Booth.

4. INSTALLATION TESTS

4.01 To insure that the coin telephone is operating properly, standard ringing, line noise, and either dial speed or Touch Calling unit frequency tests must be performed at the time of installation. In addition, the coin mechanism of the coin telephone must be tested according to the procedure prescribed for standard coin telephones in the 476-200 series of GTE Practices. If it is necessary to replace a dial, Touch Calling unit, coin diverter mechanism, or ringer in the panel coin telephone, refer to the Field Maintenance section in the 476-400 series of GTE Practices.



with Rotary Dial.

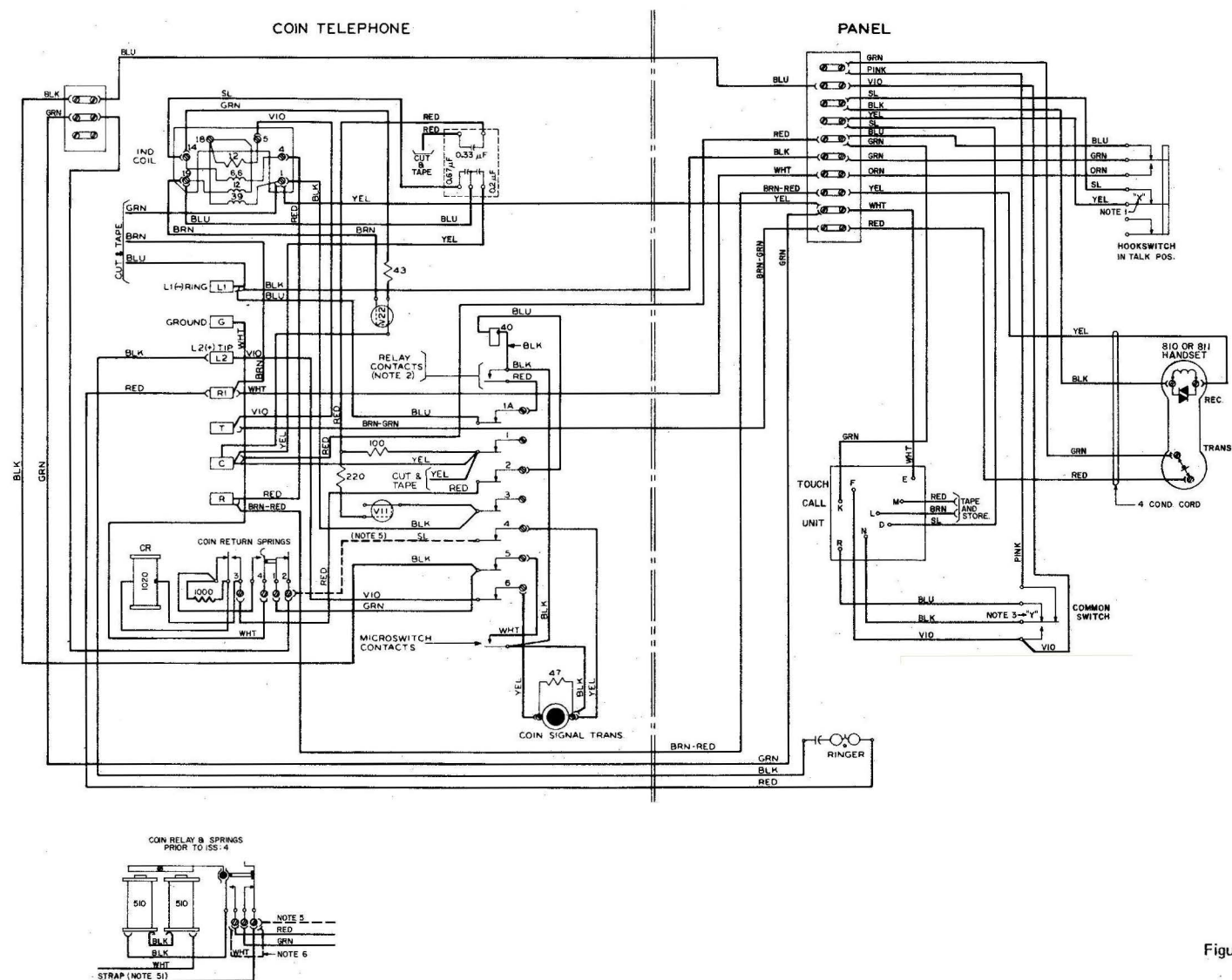


Figure 6. Circuit Diagram Panel Coin Telephone with Touch Calling Unit.