

TYPE 120B (SINGLE-SLOT) COIN TELEPHONE SET  
DESCRIPTION AND INSTALLATION

1. GENERAL

1.01 This addendum to Issue 2 of this section includes information for the Type 20D Integrated Circuit Touch Calling Unit, WECO. SOUND BOOSTER Handset, protector plate kit, stripper and screw assembly, hookswitch cam cleaning, and options for the vault door.

1.02 Microfiche Copy Recipients. Remove Issue 2, Addendum 1 of this section from the file and replace it with the microfiche copy identified as Issue 2, Addendum 2.

1.03 Paper Copy Recipients. In ink or red pencil make the changes indicated in part 2 of this addendum. Write "See Addendum" in the margin next to each change. File this addendum directly in front of the addended section.

1.04 GTE AE practices are used by GTE employees for operating and maintaining the equipment GTE AE manufactures and sells. These practices may change or may not be suitable in a specific situation and so are recommended as suggested guidelines only. GTE AE hereby disclaims any responsibility and/or liability for any consequential or inconsequential damages that may result from the use of such practices unless such practices are utilized in conjunction with the operation and maintenance of original equipment manufactured or supplied by GTE AE and covered by its standard warranty. GTE AE acknowledges that the customer's special requirements policy/practices may take precedence over those supplied by GTE AE if conflicts develop during installation and ongoing operation.

1.05 This document is provided with the understanding that it shall not be copied or reproduced in whole or in part or disclosed to others without the prior written permission of GTE Automatic Electric Incorporated.

2. CHANGES

2.01 Replace Figure 3 with Figure 3 of this addendum.

2.02 After the last sentence, in paragraph 3.08, add the following:

The Inductor Capacitor TCU (LCTCU) manufactured prior to May 1, 1982 is superseded by the Type 20D Integrated Circuit TCU (ICTCU). To replace the LCTCU with the ICTCU, order part No. HD-840138-BR. To replace a Type 20D ICTCU with another Type 20D ICTCU order part No. HD-840138-AR.

2.03 Replace Table 1 with Table 1 of this addendum.

2.04 Replace Figure 7 with Figure 7 of this addendum.

2.05 After the paragraph 3.28 NOTE, add the following paragraph:

3.29 The protector plate kit (HH-880119-1) is available for protection of the coin relay armature against vandalism. The kit includes one hardened steel protector plate, two screws and installation procedures.

3.30 The WECO SOUNDBOOSTER Handset is available from WECO for use by the hard of hearing. The handset is equipped with a self-restoring volume control amplifier.

2.06 Renumber paragraph 3.29 through 3.31 through 3.33.

2.07 Replace Table 2 with Table 2 of this addendum.

2.08 Replace Figure 11 with Figure 11 of this addendum.

2.09 In the Figure 12 title, change "Figure 12" to "Figure 12a".

2.10 Add Figure 12b of this addendum.

2.11 Change Table 5, STEP 12, under the FIELD ACTION column, to read as follows:

- (a) Loose connections at line terminal.
- (b) Line or central office problem.
- (c) Handset.

2.12 In Table 6, under the SPECIFIC TROUBLE column, make the following changes:

- (a) In STEP 14, change to read "Coin relay will not operate on long loop."
- (b) In STEP 15, change to read "Coin relay pulses or chatters."
- (c) In STEP 16, change to read "Cannot mount replacement coin relay and hopper assembly."

2.13 In Table 6, under the FIELD ACTION column, make the following changes:

- (a) In STEP 1, change to read "Replace coin relay and hopper assembly."
- (b) In STEP 2, change to read "Replace coin relay and hopper assembly."
- (c) In STEP 4, change to read "Replace coin relay."
- (d) In STEP 13, change to read "Replace coin relay and hopper assembly."

2.14 In Table 8, under the FIELD ACTION column, make the following changes:

- (a) In STEP 1, change to read "Replace the entire hookswitch and dial assembly."
- (b) In STEP 2, change to read "Replace hookswitch and TCU assembly."
- (c) In STEP 3, change to read "Adjust springs (if possible) or replace hookswitch and dial assembly."
- (d) In STEP 5, change to read "Replace mounting screw."

TABLE 1. ORDERING INFORMATION FOR TYPE 120B COIN TELEPHONE AND REPLACEMENT PARTS.

DESCRIPTION	PART NO.	MATERIAL CODE NO.	COLOR SUFFIXES				MATERIAL CODE NO.	MATERIAL CODE NO.
			BLACK	MATERIAL CODE NO.	BEIGE	MATERIAL CODE NO.	CHROME	
120B, Rotary	HC-120XXO-CSA		00	385350	10	385360	51	385451
120B, Touch Calling	HC-120XXO-JSA		00	385850	10	385860	51	385861
Upper Housing, Rotary	HD-480050-XX		AM	431155	BM		SM	
Upper Housing, Touch Calling	HD-480051-XX		AM	431156	BM		SM	
Bookswitch Dial Assembly	HD-500003-ER	431125						
Bookswitch Touch Call Assembly	HD-500003-FR	431126						
Touch Calling Unit	HD-840138-AR							
Adapter Plate, Touch Calling	HD-780171-A							
Coin Relay	HD-550001-B	431131						
Coin Hopper	HD-780044-CR	431159						
Coin Chute and Triggers	HD-780034-CR	431147						
Totalizer Chassis	HD-731095-A	431035						
American Coin Rejector, Complete	HD-500018-A	431158						
Canadian Coin Rejector, Complete	HD-500018-C	431146						
Handset Assembly	L-9080-CX		A	435445	B	435446		
Cord, Test	HD-540154-A	432544						
T-Wrench	HD-590000-A	579246						
Window, Card, Upper	HD-530000-A	439322						
Window, Card, Lower	HD-530001-A	439323						
Cover, Plastic, Relay	HD-490011-A	434046						
Cover, Plastic, Trigger	HD-490012-A	434124						

NOTE: The suffix M indicates a matte chrome finish; for bright chrome, delete the suffix M from the part number.

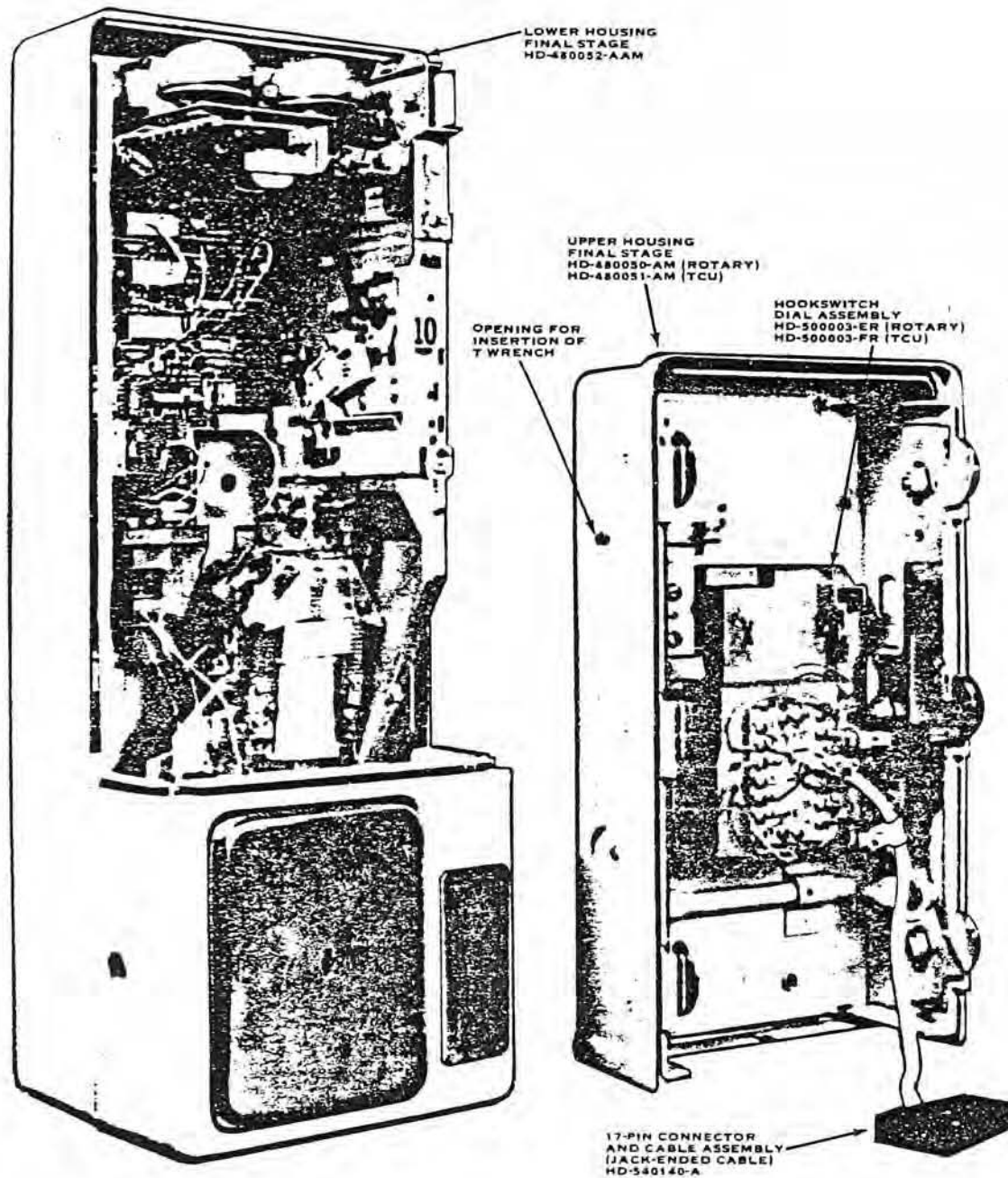
TABLE 2. TYPE 120B COIN TELEPHONE CONDUCTOR LOOP LIMITS

TYPE OF CENTRAL OFFICE	PREPAY		SEMIPOSTPAY	
	WITHOUT LOOP EXTENDER (OHMS)	WITH LOOP EXTENDER (OHMS)	WITHOUT LOOP EXTENDER (OHMS)	WITH LOOP EXTENDER (OHMS)
SxS	1,240	2,600*	1,240	3,200
CXP-5	1,640	2,600	1,640	4,040
C-1 EAX	1,440	2,600	1,440	3,640
No. 1 EAX	1,640	3,900	Service not offered	
No. 2 EAX	1,640	2,600	1,640	4,040

\*Limit is based on 0-Vdc earth potential. With -3-Vdc or greater earth potential, loop extender is not usable due to coin-detection failure.

NOTES:

- Test Conditions - Office battery: 48 Vdc  
Ground resistance: 50 ohms  
Earth potential: 0 Vdc  
Minimum coin battery:  
  
No. 1 EAX: 135 Vdc (135 to 145 Vdc)  
All other systems: 100 Vdc (100 to 120 Vdc)
- Loop extension equipment by Lorain Products Corp. Model SRM-169 loop extender strapped S-1.
- If an extension telephone is used with the Type 120B telephone, a loop limit of 800 ohms without a loop extender or 1,900 ohms with the Lorain SRM-169 loop extender must be observed to provide a minimum of 10 mA to the coin telephone during periods when the coin telephone and extension are off-hook simultaneously.
- If longer loop operation is required, the extension telephone must be modified by adding series diodes to the telephone so that its dc resistance matches that of the coin telephone. When an extension is used with a Type 120B telephone, wire four FD-1029-HT diodes in series with the tip or ring conductor of the extension. This change to the extension telephone will allow the coin telephone to be used at the higher table limits.



1 Figure 3. Interior View of Lower and Upper Housings.

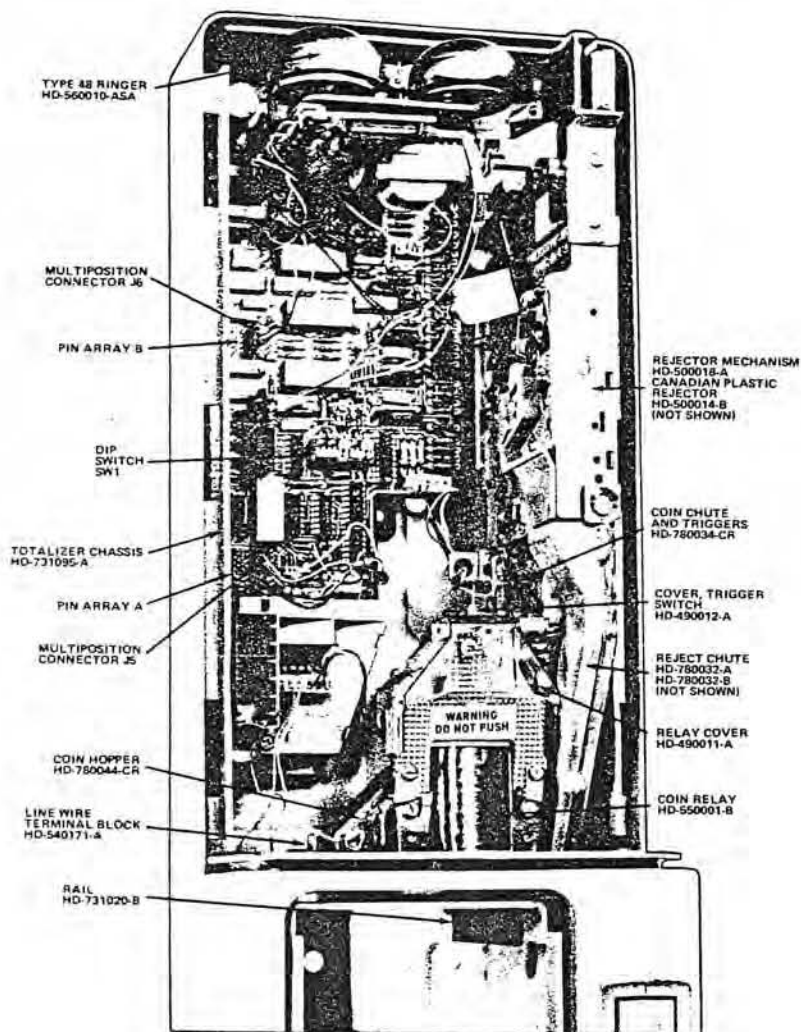
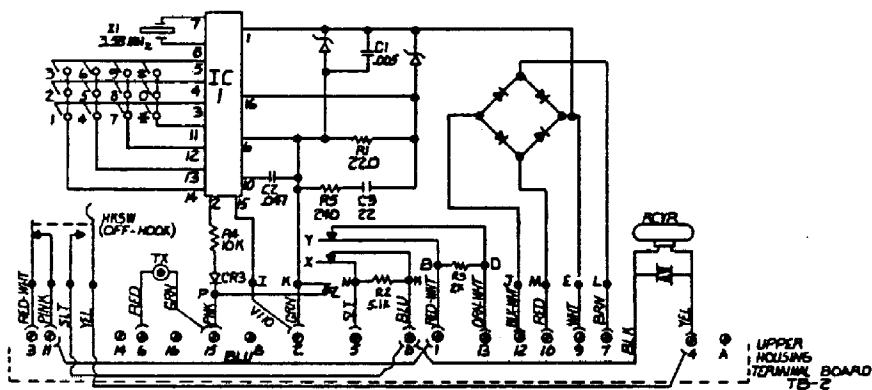
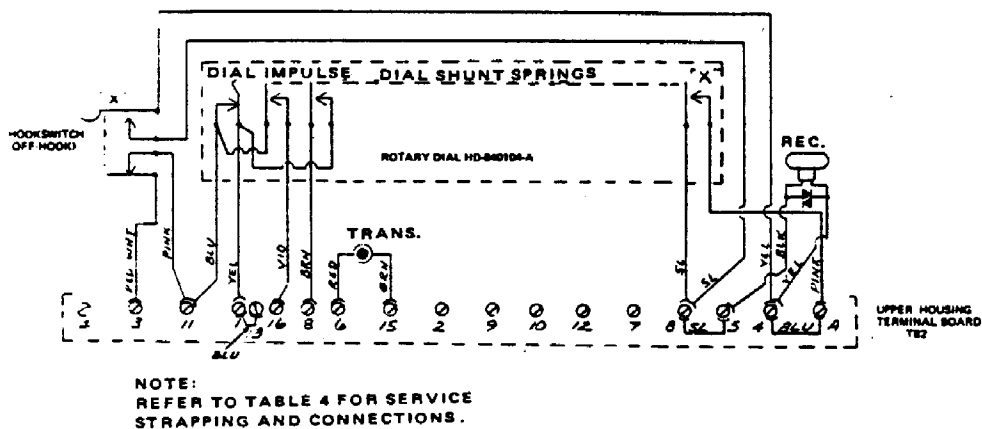


Figure 7. Interior View of Lower Housing.



**Figure 11. Wiring Diagram for Type 120B Telephone Equipped With A Type 20D TCU.**



**Figure 12b. Wiring Diagram of Upper Housing Equipped With Rotary Dial.**