

A.E.CO. SEMI-POSTPAY COIN TELEPHONE SET  
INSTALLATION

1. GENERAL

1.01 This section provides installation instructions for A.E.Co. Semi-Postpay Coin Telephone sets. Details on booths, coin telephone security devices, connections, signs, directories, and directory apparatus are provided in other sections in this division of General System Practices.

2. LOCATION

2.01 The location where the coin telephone is to be installed will be specified on the service order. The location should:

- (a) Have sufficient light.
- (b) Be free from excessive noise, vibration and dirt.
- (c) Be clear of pedestrian and vehicle traffic.
- (d) Be clear of glass counters, showcases, or other fragile objects.
- (e) Have a 6-inch clearance from fluorescent lights, transformers, and similar apparatus, to avoid inductive interference.

2.02 The surface on which the coin telephone is to be mounted should be sufficiently firm so that the backboard cannot be dislodged. The surface must be flat so that the backboard and coin telephone cannot be pried loose.

2.03 If the coin telephone must be located on a finely finished surface, obtain instructions from your immediate supervisor before proceeding with the installation. Arrangements should be made to have the customer or building owner drill mounting and wire entrance holes through glazed tile, marble and other such surfaces.

3. INSTALLATION

3.01 Instructions for installing a coin telephone in an aluminum booth are provided in the 476-500 series of General System Practices. Install the coin telephone in a wood booth or on a wall as follows:

- (1) Place the backboard (see Figure 1) against the wall vertically (it is important that the backboard and the coin telephone are exactly upright).
- (2) Mark through holes B onto the wall.
- (3) Drill holes, where marked, to take 1/4-20 anchors.
- (4) Push a loop of inside wire through backboard hole C.

NOTE: When installing a coin telephone in a wood booth or on a wall, a #14 ground wire must be connected between the coin telephone lower housing and protector ground as described in Part 5. The ground wire must be connected to the coin telephone before the coin telephone is mounted on the backboard.

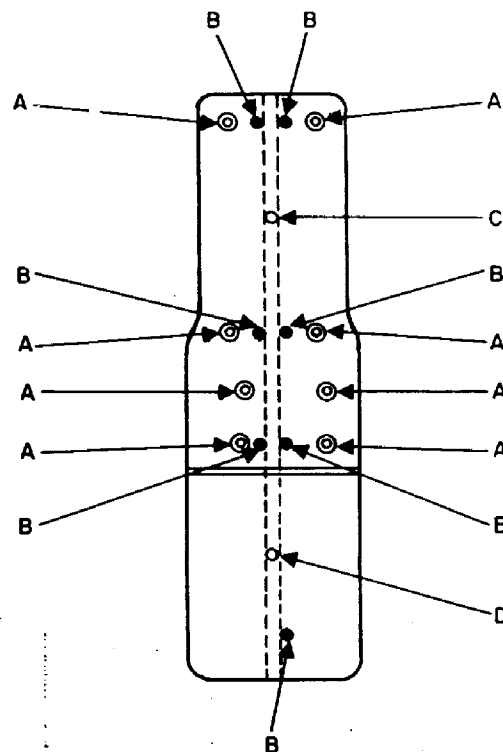


Figure 1. Coin Telephone Backboard.

- (5) Bring the remainder of the wire down the channel at the rear of the backboard.
- (6) Push the end of the inside wire through the hole marked D.

NOTE: If the inside wire runs along the bottom of the booth or enclosure, push a loop of inside wire through hole D; bring the wire up the backboard channel and push it through hole C.

- (7) Mount the backboard on the wall with anchor screws.
- (8) Unlock the coin telephone upper housing and lift the housing off.
- (9) Mount the lower housing and backplate onto the backboard with 1/4-20 flathead machine screws through the threaded inserts of holes A.
- (10) Remove the cover from the ringer box.
- (11) Mount the ringer box on the bottom part of the backboard with wood screws.
- (12) Connect the ringer and line wires. Connection details are provided in the Connections section of this General System Practices series.

NOTE: Coin telephones installed in wood booths or on a wall must be grounded. Grounding instructions are provided in Part 5 of this section.

- (13) Replace the cover on the ringer box and the upper housing on the coin telephone set. Lock the upper housing.

#### 4. TESTS

4.01 Standard installation tests for ringing, dial speed, and line noise level must be performed. In addition the following test must be performed to insure that the coin mechanism functions correctly.

4.02 When the cash compartment key is available or the cash compartment cover is

installed, check coin mechanism operation as described in the following procedure. (See Paragraph 4.03 for checking a locked coin telephone when no key is available.)

- (1) Dial the coin telephone number and wait for busy tone. Hang up.
- (2) Unlock cash compartment door.
- (3) Dial predetermined number for assistance in checking coin telephone operation. Do not call the operator.
- (4) When called party answers, deposit one nickel. On coin telephones equipped for dime-only control, the nickel will be rejected. On coin telephones equipped for five-cent service, the nickel will be collected and the transmission block will be removed. On coin telephones equipped for two-nickel control, the transmission block will remain, therefore, deposit a second nickel which should remove the transmission block. Hang up.
- (5) Call the same party for further assistance and when the called party answers, deposit a dime. Transmission block should be removed. Hang up.
- (6) Repeat step (5) using a quarter.
- (7) Call the operator for assistance with coin signal testing.
- (8) Deposit the proper coin in each slot and have the operator identify each coin. Hang up. Lock the cash compartment cover.

4.03 When a cash compartment key is not available and the cash compartment cover is installed, check coin mechanism operation as follows:

- (1) Dial the number of the coin telephone and wait for busy tone. Hang up.
- (2) Call operator for assistance in coin signal testing.
- (3) Deposit the proper coin in each slot and have the operator identify each coin. Hang up.

## 5. COIN TELEPHONE HOUSING GROUND

5.01 A semi-postpay coin telephone installed in a wood booth or on a wall must be grounded as follows:

- (1) Solder a spade terminal (D-15830-A) to each end of a #14 wire (wire length sufficient to reach from mechanism base mounting screw, through the wire opening in the lower housing to the protector ground terminal). Terminate the spade terminal under the mechanism base mounting screw shown in Figure 2. Route the wire through the lower housing to the protector ground terminal (the wire must be routed so that it does not obstruct the coin return chute opening or the coin trigger). Wrap the end of the wire around the protector ground terminal.
- (2) At the point on the edge of the upper housing which will contact the equalizing spring when the upper housing is installed (see Figure 3), remove sufficient paint from the inside surface so that a ground clip can make contact with the metal of the upper housing. Place a Tinnerman C-23405-012-3B ground clip on the upper housing at the point where it will contact the equalizing spring when the housing is installed.

5.02 The coin telephone installation must be in accordance with the protection and grounding procedures described in the 435 division of General System Practices.

NO. 14 GROUND  
WIRE (TO  
PROTECTOR  
GROUND)

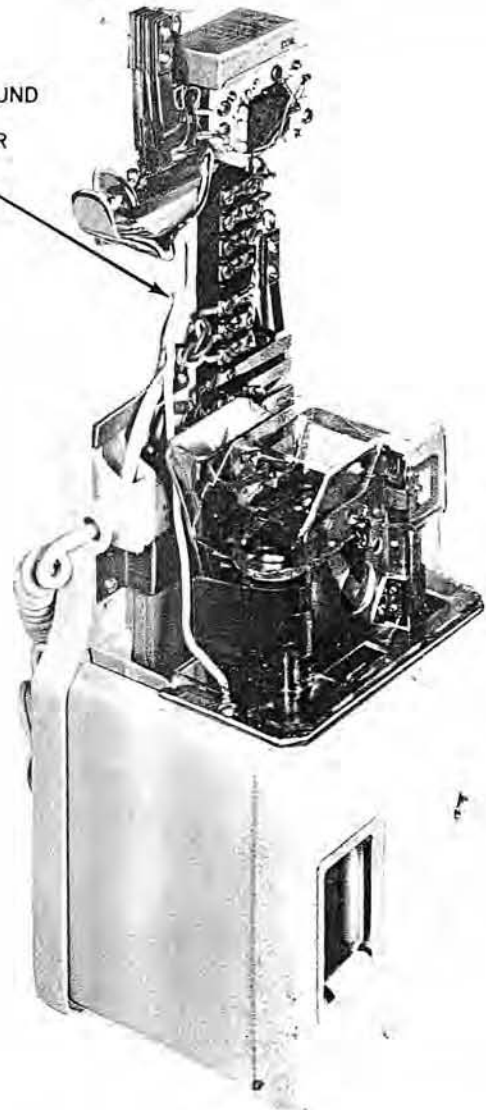


Figure 2. Ground Wire Attachment.

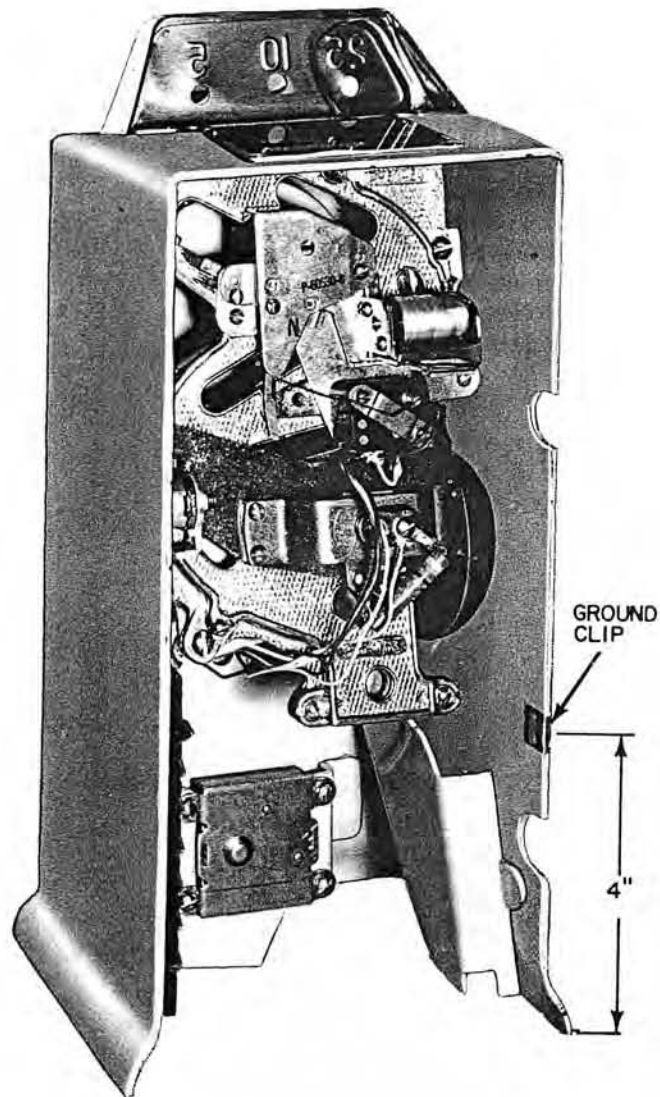


Figure 3. Ground Clip Attachment.