

A.E.CO. 3-GAUGE COIN TELEPHONE SET
INSTALLATION

1. GENERAL

1.01 This section provides installation instructions for A.E.Co. Prepay Coin Telephone sets. Details on booths, coin telephone security devices, connections, signs, directories, and directory apparatus are provided in other sections in this division of General System Practices.

2. LOCATION

2.01 The location where the coin telephone is to be installed will be specified on the service order. The location should:

- (a) Have sufficient light.
- (b) Be free from excessive noise, vibration and dirt.
- (c) Be clear of pedestrian and vehicle traffic.
- (d) Be clear of glass counters, showcases, or other fragile objects.
- (f) Have a 6-inch clearance from fluorescent lights, transformers and similar apparatus to avoid inductive interference.

2.02 The surface on which the backboard is to be mounted should be sufficiently firm so that the backboard cannot be dislodged. The surface must be flat so that the backboard and coin telephone cannot be pried loose.

2.03 If the coin telephone must be located on finely finished surfaces, obtain instructions from your immediate supervisor before proceeding with the installation. Arrangements should be made to have the customer or building owner drill mounting and wire entrance holes through glazed tile, marble and other such surfaces.

3. INSTALLATION

3.01 Installation of the coin telephone in an aluminum booth is described in the 476-500 series of General System Practices. Install the coin telephone in a wood booth or on a wall as follows:

- (1) Place the backboard (see Figure 1) against the wall vertically (it is important that the backboard and the coin telephone are exactly upright).
- (2) Mark through holes B onto the wall.
- (3) Drill holes, where marked, to take 1/4-20 anchors.
- (4) Push a loop of inside wire through backboard hole C.

NOTE: When installing a coin telephone in a wood booth or on a wall, #14 ground wire must be connected between the coin telephone lower housing and protector ground as described in Part 5. The ground wire must be connected to the coin telephone before the coin telephone is mounted on the backboard.

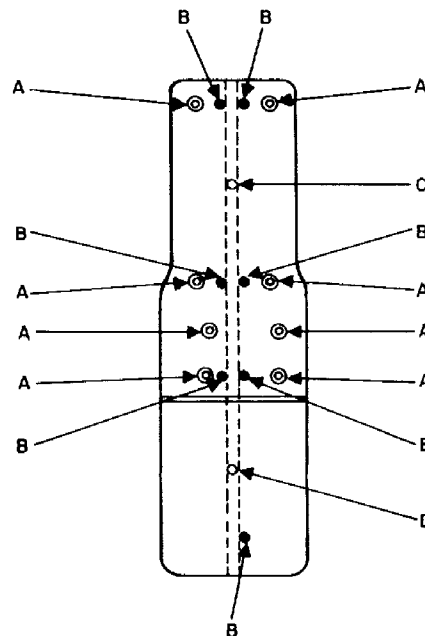


Figure 1. Coin Telephone Backboard.

SECTION 476-202-200
ISSUE 1

- (5) Bring the remainder of the wire down the channel at the rear of the backboard.
- (6) Push the end of the inside wire through the hole marked D.

NOTE: If the inside wire runs along the bottom of the booth or enclosure, push a loop of inside wire through hole D; bring the wire up the backboard channel and push it through hole C.

- (7) Mount the backboard on the wall with anchor screws.
- (8) Unlock the coin telephone upper housing and lift the housing off.
- (9) Mount the lower housing and backplate onto the backboard with 1/4-20 flathead machine screws through the threaded inserts of holes A.
- (10) Remove the cover from the ringer box.
- (11) Mount the ringer box on the bottom part of the backboard with wood screws.
- (12) Connect the ringer and line wire. Connection details are provided in the Connections section of this General System Practices series.

NOTE: Coin telephones installed in wood booths or on a wall must be grounded. Grounding instructions are provided in Part 5 of this section.

- (13) Replace the cover on the ringer box and the upper housing on the coin telephone. Lock the upper housing.

4. TESTS

4.01 Standard installation tests for ringing, dial speed, and line noise level must be performed. In addition, the following test must be performed to insure that the coin mechanism functions correctly.

4.02 When the cash compartment key is available or the cash compartment door is not

installed check coin mechanism operation as described in the following procedure. (See Paragraph 4.03 for checking a locked coin telephone when no key is available.)

- (1) For a coin telephone providing five-cent service, deposit a nickel, dial the number of the coin telephone and wait for busy tone. Hang up and check for correct coin refund.
- (2) For a coin telephone equipped for two-nickel service, deposit one nickel and check that a call cannot be made. Deposit a second nickel and dial the number assigned to the coin telephone. When busy tone is heard, hang up and check for correct coin refund.
- (3) For coin telephones equipped for dime-only control, deposit a dime or quarter and dial the number assigned to the coin telephone. When busy tone is heard, hang up and check for correct coin refund.
- (4) Remove cash compartment door if it is in place.
- (5) Insert a dime and dial the test line.
- (6) When connection is completed to the test line, hang up. Check that the dime falls into the cash compartment.
- (7) Deposit a quarter, dial the test line and hang up when connection is made. Check that the quarter falls into the cash compartment.
- (8) Deposit a dime. Dial the local testboard (or operator) for assistance with coin signal testing.
- (9) Deposit the proper coin in each slot and have the testboardman identify each coin.
- (10) Have the testboardman apply refund current. Check that the coins drop into the coin return receptacle.
- (11) Redeposit the coins and have the testboardman apply collect current. Check that coins drop into the cash compartment.
- (12) Replace and lock the cash compartment door.

SECTION 476-202-200
ISSUE 1

4.03 When a cash compartment key is not available and the cash compartment door is locked, check the coin telephone as follows:

- (1) Depending on the type of coin operation the coin telephone is equipped for, perform step (1), (2), or (3) of Paragraph 4.02.
- (2) Make a call to the local testboard (or operator) for assistance with coin signal testing.
- (3) Deposit the proper coin in each slot and have the testboardman identify each coin. Hang up.

5. COIN TELEPHONE HOUSING GROUND

5.01 A coin telephone installed in a wood booth or on a wall must be grounded as follows:

- (1) Solder a spade terminal (D-15830-A) to each end of an 11-inch #14 wire. Terminate one end under a mechanism base machine screw. Route the wire to avoid the coin chute opening and terminate the other spade terminal at terminal strip ground terminal G. Solder a spade terminal to one end of a #14 wire (wire length sufficient to reach from terminal G through the lower housing wire opening and to the protector ground terminal). Terminate the spade terminal at terminal G. Route the #14 wire through the lower housing wire opening and wrap the end of the wire around the protector ground terminal.
- (2) At the point on the edge of the upper housing which will contact the equalizing spring when the upper housing is installed (see Figure 2), remove sufficient paint from the inside surface so that a ground clip can make contact with the metal of the upper housing. Place a Tinnerman

C-23405-012-3B ground clip on the upper housing at the point where it will contact the equalizing spring when the housing is installed.

5.02 The coin telephone installation must be in accordance with the protection and grounding procedures described in the 435 division of General System Practices.

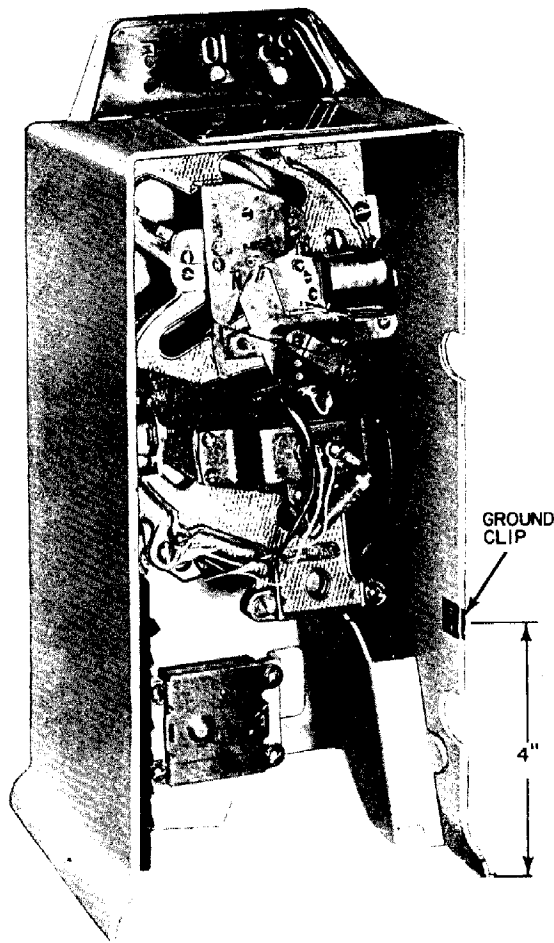


Figure 2. Ground Clip Attachment.