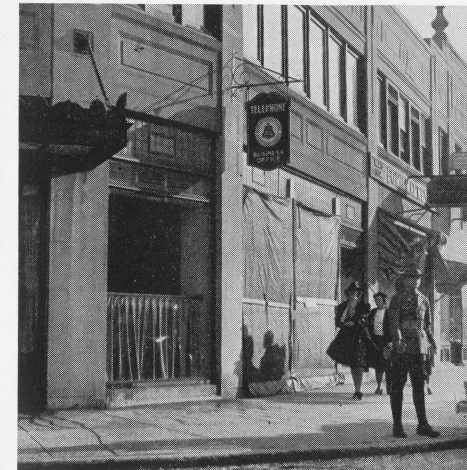




*Floods sweep across River St., Brookfield, Mass., on the road south. Our foresighted engineers placed this cable underground across this danger spot.*



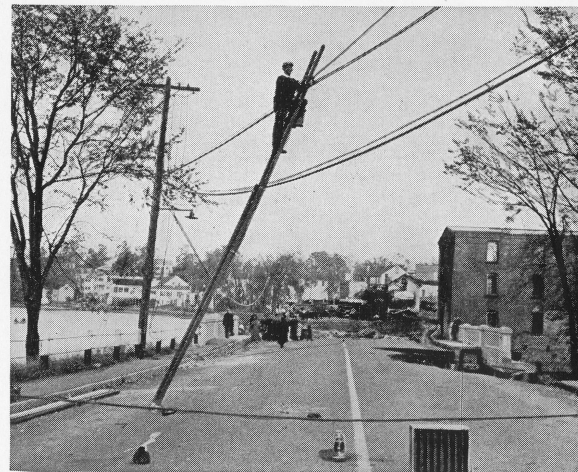
*Fire adds its horrors to flood and hurricane at East Brookfield, Mass. William Thompson can be seen splicing in a new cable at upper right.*



*A national guardsman stands alertly before the smashed windows of our Newton Corner, Mass., business office.*



*Old friends turned enemies as these trees crash across the cable at Spencer, Mass. This shows graphically how strongly Bell System equipment is built.*



*The Brookfields are again connected with the world as the first pair in a new cable is spliced in by our men at East Brookfield, Mass.*



*A maze of wires and broken poles on Waverly Street, Newton, Mass.*



*The Topics photographer took this picture from a rowboat at East Brookfield, Mass.*



*Howard Blum (on ladder) splices, while Norman Anderson (near truck) prepares wire near Leicester, Mass.*



*Little cable holds up big tree at Brookfield, Mass.*



*Looking towards the North Brookfield, Mass., central office, showing poles held up by stakes.*



*Why Plant men are praying there will be no more wind.*



*The voice road to North Brookfield, Mass., on the ground but still carrying messages.*



*Careful sorting of trees and wires needed on North Avenue, Weston, Mass.*



*One of our construction crews pulls cable to position on a new pole at Spencer, Mass.*





*New England Telephone and New Jersey Bell Telephone Company trucks working together to repair hurricane damage to cable line in Seekonk, Mass.*



*Tangled steel was all that remained of this car when a huge tree fell on it on Main Street, Sunderland, Mass.*



*A heavy wrecking crane lifts tree stumps from the roadside on Gilbert Street, North Brookfield. Many of these trees fell across our cable.*



*Scene of desolation in a suburb of Providence after the tidal wave had receded.  
Providence Journal-Bulletin*



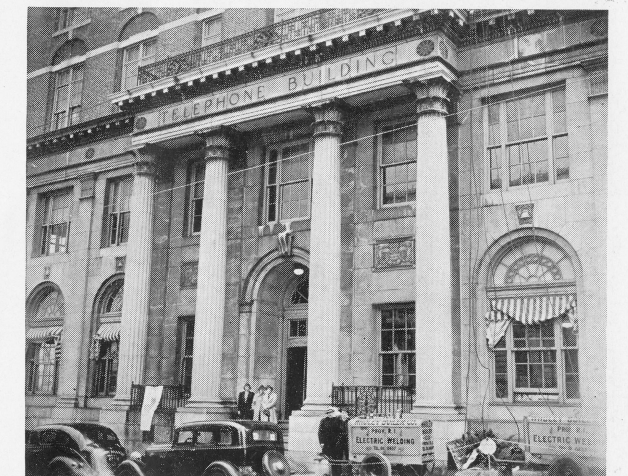
*A dangerous spot on Everett Street, Southbridge, Mass. Giant limbs carried telephone wires with them when they fell.*



*Hoisting a new telephone pole into place at Jamaica Plain, Mass., where the Chesapeake and Potomac Telephone Company crew helped our own forces to restore service.*



*This river was formerly a street in Ware, Mass. Overflowing of the Ware River isolated Ware from the rest of the world for several days.*



*Welding machines provide power for our building, 234 Washington St., Providence, R. I. The flag denotes an emergency red cross station set up within the building.*



*Illinois Bell Telephone Company trucks entering Pittsfield, Mass., to take part in the struggle to restore New England's communications.*



*More Illinois Bell Telephone Company trucks and crews at Pittsfield, Mass.*

*Emergency power for our 112 Union St., Providence, R. I., building, as fire engines pump out flooded manholes.*



*The emergency headquarters set up at 50 Oliver Street, Boston. Here Plant, Traffic, Commercial and Engineering coordinated their departments to provide emergency service to hospitals, fire, police and government departments, etc.*







One of the trucks from Michigan Bell Telephone Co. is unloaded from flat cars at Hartford, Conn., before starting over the road for our Company.



The storm dropped this tree across our lines near 191 Melrose St., Melrose, Mass.



Western Electric office force works by lantern light after power fails. All of the emergency supplies were carried downstairs and loaded by hand when lack of power stopped the elevators.



Trucks from the Indiana Bell Telephone Co. being unloaded from a freight train after their trip across the country from Indiana to New Haven, Conn.



Line crew from Chesapeake and Potomac Telephone Company of Wakefield, Mass., chop trees to free wires and cable.



Linemen and splicers from the Indiana Bell Telephone Co. pause for a moment after detraining at New Haven, Conn., prior to starting for our Company's territory.



Another view of the seven-car freight train which carried trucks from the Indiana Bell Telephone Co. to New England.



A tangle of cable and trees near Stoneham, Mass.



Splicers, linemen and supervisors from the Michigan Bell Co. after detraining at Hartford, Conn.



Line crews with their trucks from the New Jersey Bell Telephone Co. in Brockton, Mass., to assist our Southern Division Plant forces.



Erecting a new pole in Melrose, Mass.



Falling trees and broken poles drop this cable onto the street at Melrose, Mass.