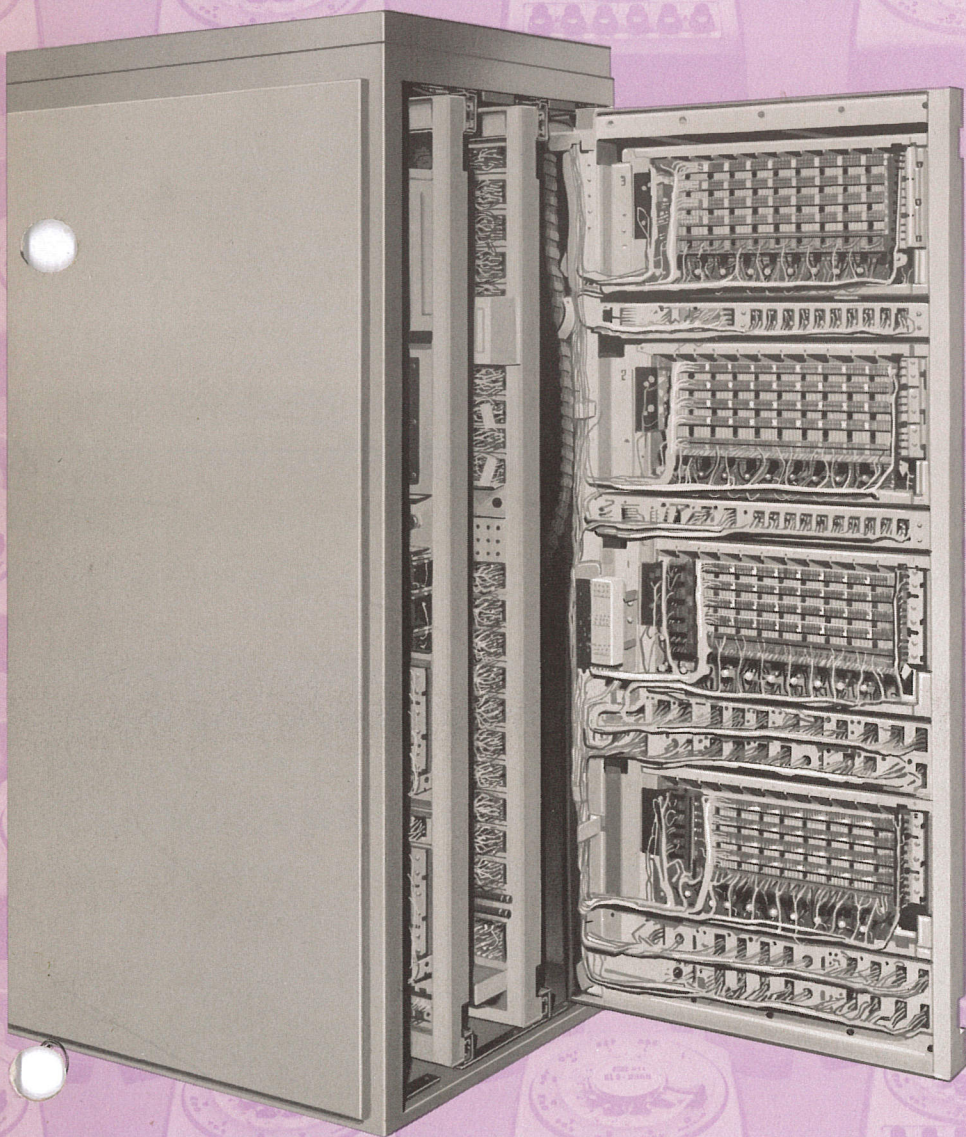


Bell System



20-40 DIAL PAK

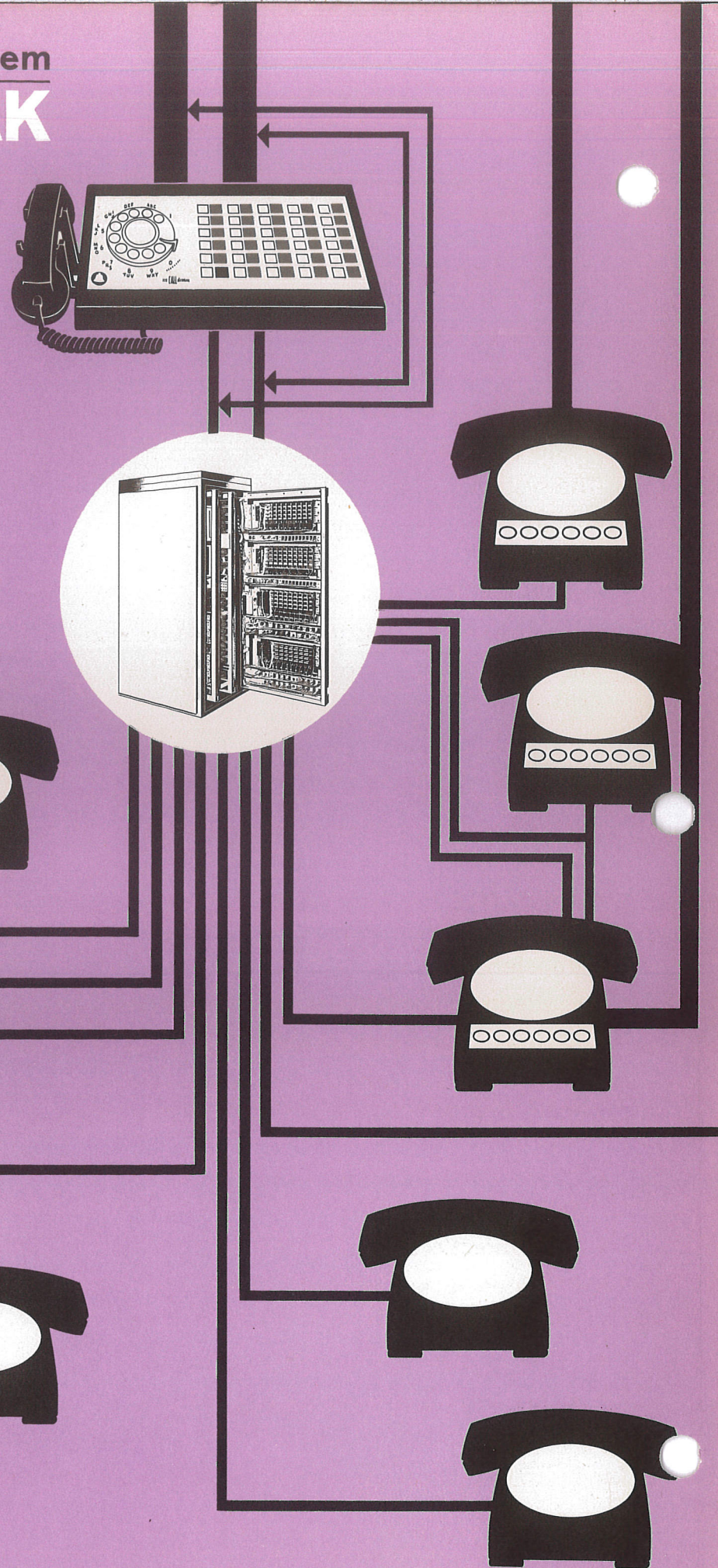
an efficient
internal-external
communications
service that
more than
pays its way



Bell System

20-40 DIAL PAK

Fast, Direct Dial *Intercom*
Efficient *Outside Service*
Capacity—Compactness
Maximum Flexibility



This system gives your business these benefits:

FAST, DIRECT DIAL INTERCOM

- ☐ All phones are intercom stations with two-digit dialing.
 - Keeps your people at their desks.
 - Eliminates walk-to-talk delays.
- ☐ Complete privacy is assured.
 - There's no attendant involved.
- ☐ The system is completely automatic.
 - Works 24 hours a day.
- ☐ Calls can be automatically routed to a second line if the first is busy.
 - Saves call-back time.
- ☐ The same phones are used for outside calls.

EFFICIENT OUTSIDE SERVICE

- ☐ Your telephone attendant answers "incoming" calls on your listed lines.
 - Allows fast, effective handling.
 - Provides immediate and accurate transfer.
- ☐ The attendant also handles outgoing calls.
 - Assures control and identification.
- ☐ Frequent users of outside service are assigned key telephones with individual Telephone Company lines.
 - Offers direct outward service without delays.
 - Gives direct access to "incoming" calls.
 - Provides direct access to intercom facilities.
 - Reduces slow-downs and bottlenecks.
 - Allows your attendant to give priority treatment to "incoming" calls.

CAPACITY—COMPACTNESS

- ☐ Lines and stations are added as you need them:
 - Up to 6 add-on lines.
 - Up to 40 stations (in units of 10)
- ☐ Outside lines for key telephones are provided to suit your needs.
- ☐ Equipment cabinet is quiet, attractive and compact.
 - Requires no special equipment room.
 - Fits in almost any location.
- ☐ No capital investment required, and there is no extra charge for expert Bell System maintenance.

MAXIMUM FLEXIBILITY

- ☐ All types of telephones—regular, button, special—work with this system.
 - Permits tailoring telephone facilities to the user's need.
- ☐ Arrangements are available for:
 - Dial dictation.
 - Code call equipment.
 - Connections to your loudspeaker paging equipment.
- ☐ Disconnects, audible, and visual signals are automatic.
 - Saves the attendant's time.
 - Speeds call handling.
 - Helps prevent interruptions.
- ☐ Any telephone can be connected directly to any one of 10 other telephones by depressing a button.
 - Removes the need for dialing frequently called telephones.
- ☐ An alternate answering position can be added.

Here is the **20-40 DIAL PAK** system designed for you:

[illegible]

BELL TELEPHONE SYSTEM

TCI Library | www.telephonecollectors.info