

THE
510 TYPE
TELEPHONE SET



Western Electric

SINGLE BUTTON 510 - SERIES TELEPHONE SET

The 510 type telephone set is about to become available as a replacement for the single button 410-type telephone set. The 510BW-3 and 510FW-3 telephone sets have the appearance of the 500 type telephone sets except that a single transparent combination turn and push button is provided below and to the left of the dial.

The 510BW-3 is intended for use in the No. 1A key telephone system for dial service to provide the following feature combinations:

- Single line; ringer cut-off, signalling
- Single line; extension cut-off, ringer transfer
- Single line; extension cut-off, external ringer cut-off,
or head set control
- Two line pick-up.

The 510BW-3 telephone set has a four conductor mounting cord and replaces the 410AAW-3 and 410ACW-3 telephone sets. For manual service, it is necessary to mount the 95A-3 apparatus blank in place of the 7A-3 dial.

The 510FW-3 is intended for use in the No. 1A key telephone system for dial service to provide the following feature combinations:

- Single line; extension cut-off, external ringer cut-off
or head set control; signalling
- Single line; extension cut-off, ringer transfer; signalling
- Two line pick-up; signalling
- Two line pick-up; common ringer

The 510FW-3 telephone set has a 6 conductor mounting cord and replaces the 410BAW-3 and 410BCW-3 telephone sets. For manual service it is necessary to mount the 95A-3 apparatus blank in place of the 7A-3 dial.

The 510-type telephone set contains components featured in the 500-series telephone sets including a C-2 ringer and its volume adjustment control, the new 425B network for transmission equalization, and in addition an 8-post terminal strip to which the free ends of the mounting cord connect and a combination push-turn 584A key. The 584A key is similar to the 559A key used in the 410-series telephone sets except for mounting bracket and different type of transparent turn button knob. No provision is made in the set to illuminate the turn button.

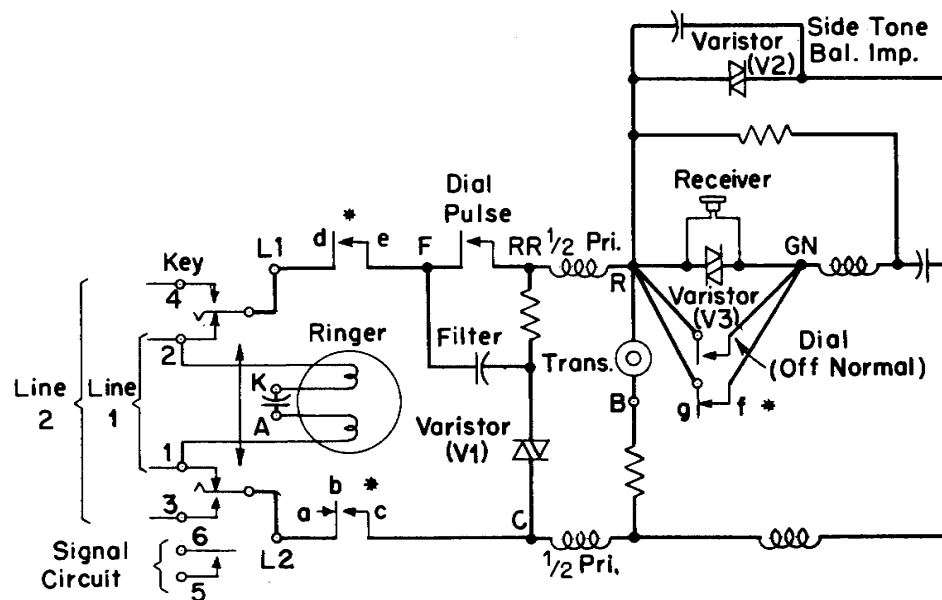
A No. 7-type buzzer can be substituted locally for the C-2 ringer, using a 44A bracket made available for this purpose. The bracket may be anchored to the base of the set utilizing mounting holes provided for the ringer.

Diagram illustrating the wiring harness for the 510BW-1000, showing the connection of the D6S Mtg. Cord to the vehicle's electrical system. The harness includes wires labeled R, G, Y, BK, BL, and W, connected to terminals 1 through 6, E1, and E2.

Notes:

- A. For Manual Service: Same as 510BW-3 or 510FW-3 except, replace dial with 95-A Apparatus Blank and transfer Slate - White switch lead to (RR) terminal on network.
- B. To permanently silence ringer:
Transfer Black ringer lead to (K) terminal on network.
- C. Ringer Cut-Off control by customer:
Bend stop next to detent on ringer volume control so that it completely clears the rim of the ringer frame. This provides a further position on volume control which prevents armature movement.
- D. When the handset is removed from cradle, contact gf breaks last.

CIRCUIT SCHEMATIC 510BW-3 & FW-3 TELEPHONE SETS
(See Note A)



* Switch hook contacts b-c and d-e open line on handset hang-up; f-g contacts short-circuit the receiver to prevent clicks due to opening of line.

DISTRIBUTOR IN THE UNITED STATES

Graybar

ELECTRIC COMPANY

Executive Offices: 420 Lexington Avenue, New York 17, N. Y.

Offices in more than 100 principal cities

A NATIONAL ELECTRIC SERVICE

DISTRIBUTOR FOR CANADA

Northern Electric

COMPANY LIMITED

General Offices: 1600 Notre Dame Street, W.

Plant: 1261 Shearer Street,
Montreal 3, P. Q., Canada

DISTRIBUTING HOUSES THROUGHOUT CANADA