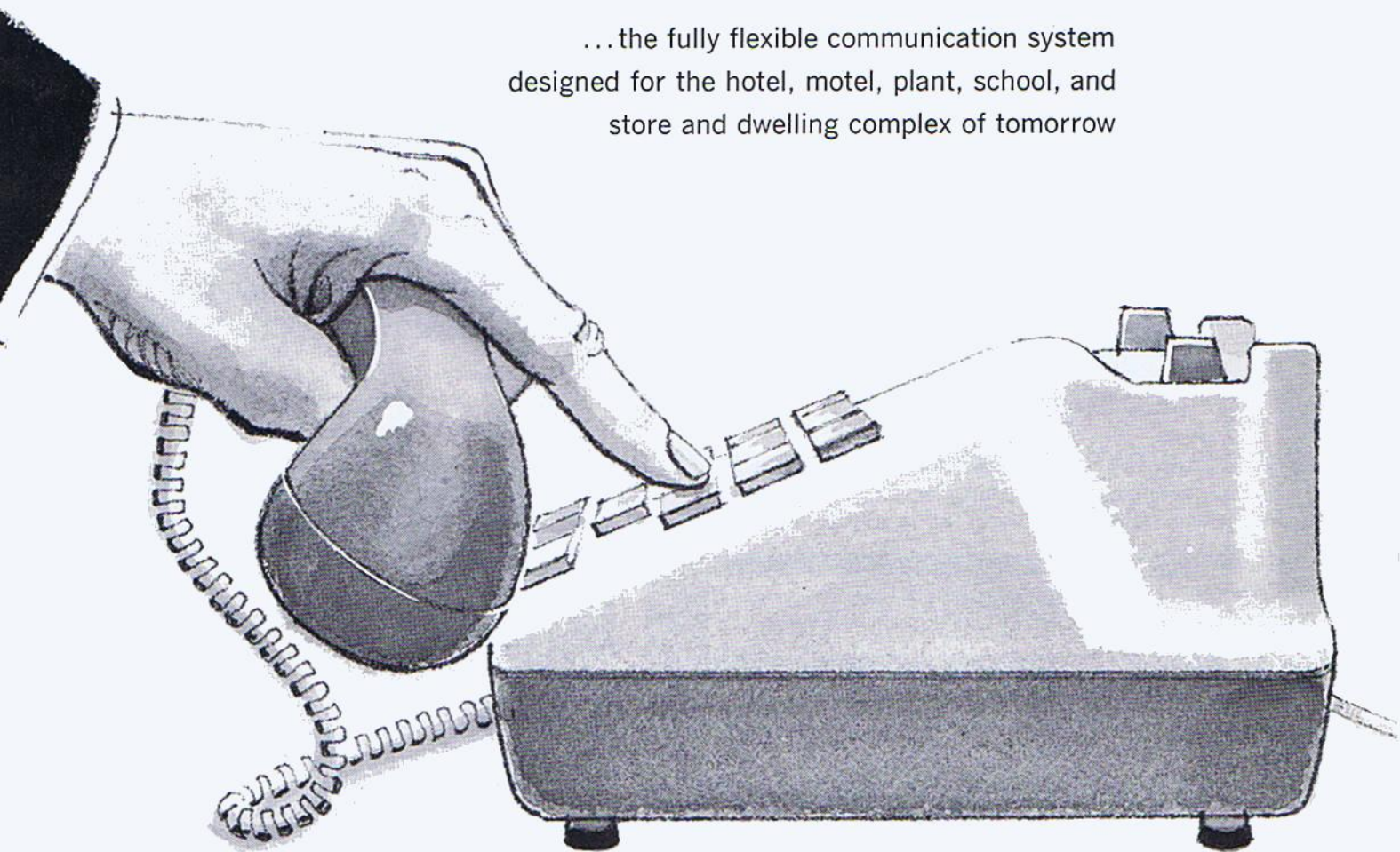


Norelco® **PUSHBUTTON**
AUTOMATIC TELEPHONE SYSTEMS

...the fully flexible communication system
designed for the hotel, motel, plant, school, and
store and dwelling complex of tomorrow





BUILD

FOR THE FUTURE

with today's most modern internal communications plan—Norelco's Pushbutton Automatic Telephone System. Specify it to meet today's needs—it expands to meet tomorrow's. Norelco's is an instant-communications system, suitable for use in plants, stores, hotels, motels, residential complexes. It operates independently of regular phone lines—privately, simply, without monthly service charges. Small job? Start with less than 50 lines. Big one? Norelco systems can take up to 10,000 lines.

CHECK THESE PRACTICAL *Norelco* FEATURES

EASE AND ECONOMY OF INSTALLATION:

Installation utilizes a few wires as opposed to the complex cable installation of intercom systems.

SPEED:

split-second pushbutton "dialing" with the telephone of tomorrow—lightning-fast components that react to the lightest touch.

QUIET OPERATION:

cabinet housing equipment can be installed in any office or central location, runs unobtrusively—no special room needed.

DURABILITY:

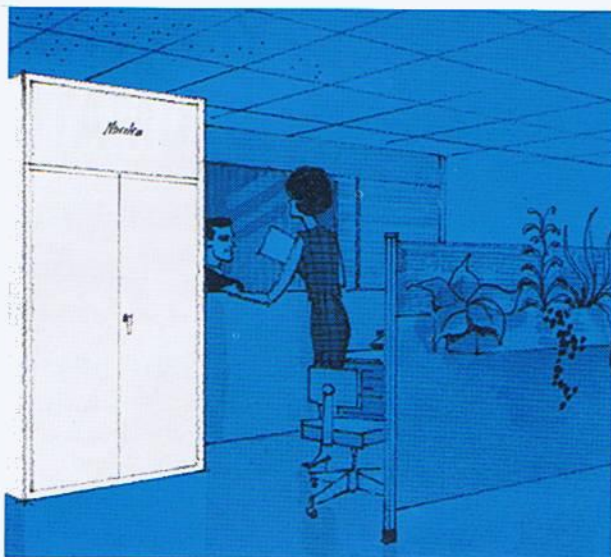
rugged design, top quality materials assure the system and all its components a long and virtually trouble-free life.

EXPANDABILITY:

modular plug-in units mean easy, economical expansion without interruption of service; even the expansion cabinets are plug-in. No need for initial overbuying.

ADAPTABILITY:

geared to accommodate many special needs such as door-opening, voice paging, or closed-circuit TV control.



Cabinet installation is so compact, so silent in operation, that it can be placed anywhere...can even be used as a room divider.

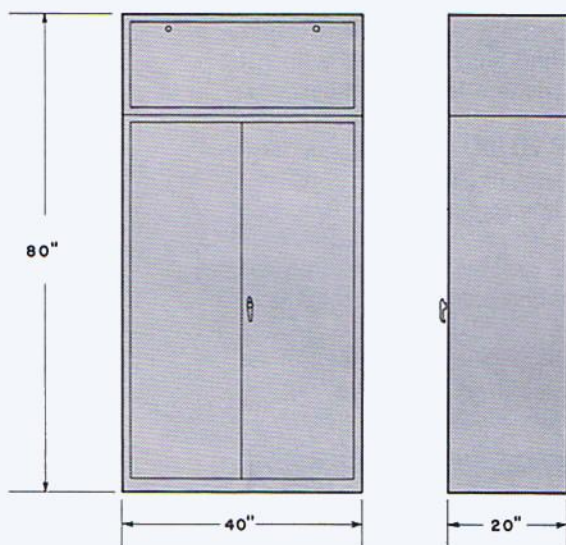


... And See The Full List Of Optionals On Page 4

SPECIFICATIONS

Input voltage110 V.A.C.
 Nominal Operating voltage48 V.D.C.
 Permissible loop resistance1200 ohms
 Weight of a fully equipped cabinet.....600 lbs.

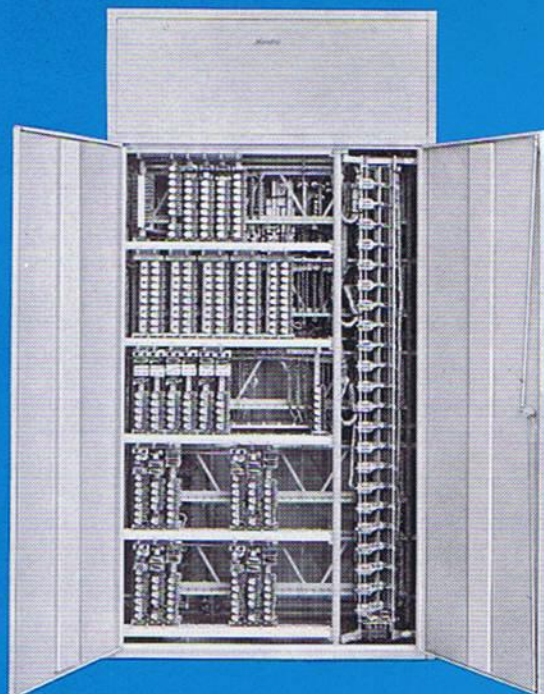
DIMENSIONS OF CABINET



CAPACITY TABLE

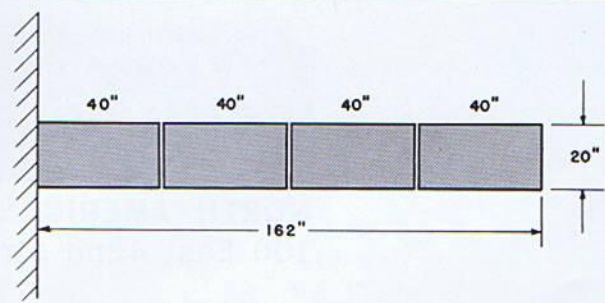
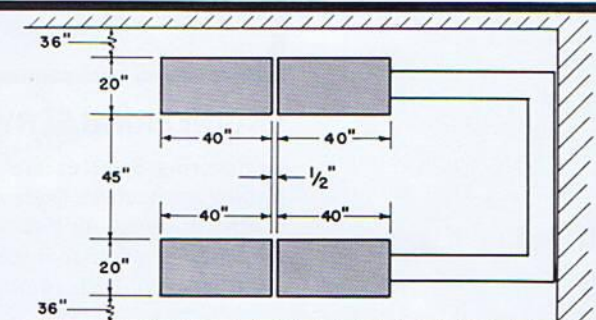
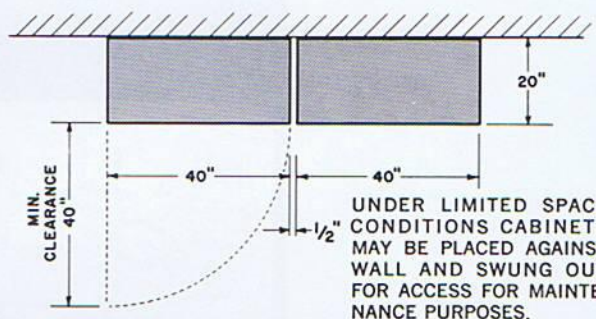
Type	Extensions	Links	Cabinets
0-12-100	100	12	1
0-24-200	200	24	2
0-36-300	300	36	3
0-48-400	400	48	4
0-54-450	450	54	5

500-1000 line Exchanges
 Available on request.



Front view of the type UP cabinet with doors opened showing typical plug-in unit construction.

TYPICAL FLOOR PLAN ARRANGEMENTS



OPTIONAL FEATURES



VOICE PAGING — Permits accessing public address system from any desired PAX extension.

STAFF LOCATING SYSTEM —

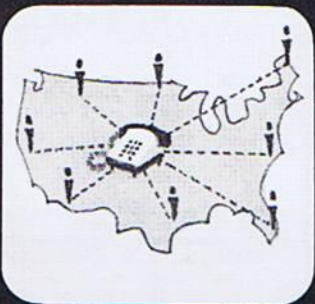
Visual and/or audible signals with automatic connection to calling party by single digit answer from any extension. Uses only a single talking link and releases code call equipment immediately.



AUTOMATIC CALL TRANSFER —

Permits the transfer of calls from one extension to another in the event of failure of the first extension to answer. Transfer remains in effect for subsequent calls until released by extension user.

CONFERENCE CALLS — Permits up to four extensions to take part in the same telephone conversation.



EXECUTIVE RIGHT-OF-WAY —

Permits certain extensions to break into existing busy connections to get prompt answers to urgent questions.

GROUP HUNTING — Permits several individual extensions to be accessed via a common single extension number. These extensions will be cyclically checked to connect to the first non-busy extension in the group.

TIE LINES — Various types of tie lines are available for connecting the UP to other telephone systems.

ENGINEERING SERVICES:

Engineering Services are available to provide "customized circuitry" for any application. Quite often specialized features such as automatic control of lights, alarms, valves, etc., can be included in this PAX at a very modest additional cost to provide a completely integrated switching system for both communication and control.

MEETING TODAY'S NEEDS WITH TOMORROW'S EQUIPMENT

Norelco

**TELEPHONE
DIVISION**

NORTH AMERICAN PHILIPS COMPANY, INC.
100 East 42nd Street, New York, N. Y. 10017