

Nos. 1222 and 1223 Handset Telephones



No. 1222 Handset Telephone
For Manual Service

In the development of the No. 1222 and No. 1223 self-contained Handset Telephones primary consideration was given to the requirements of the operating company and to the appeal they would have to the user. These units introduce improvements and innovations to accomplish this end. As a result we have sturdy construction, easy maintenance, highly efficient transmission and symmetry in design. The manner in which this is accomplished is described in further detail below.

The Housing is a single zinc die-casting which includes the cradle. This material was selected because of its mechanical strength and capability of taking the smooth surface and sharply defined lines of the mold. It is finished with a synthetic urea-formaldehyde baked enamel, comparing favorably in wear resistant qualities to solid plastic. Its low sweeping lines fit quietly into its surroundings. A recess below the cradle and at the rear of the housing forms a convenient handle in which to insert the fingers when the telephone is moved.

A Pressed Metal Base upon which the housing rests, mounts all equipment except the plunger switch and the dial when the telephone is used with dial exchanges. The base is attached to the housing by a strong webbing which prevents any strain on the wiring when the telephone is opened for inspection. Four large rubber feet absorb shock when the telephone is moved, avoid mars to furniture, prevent slippage when dialing and elevate the base sufficiently to allow the egress of sound from the ringer. The base is assembled to the housing by necked screws. Perforations covered by rayon cloth, underneath the ringer gongs, prevent muffling of sound and exclude the entry of insects. Separate terminal blocks provide a ready means for connecting the line and handset cords.

All parts are easily accessible and readily interchanged because of the screw terminal arrangement employed. A screw driver is the principal tool required for installing, replacing or adjusting this instrument. Wherever there are moving parts which require alignment, the complete unit is assembled to a solid frame.

The No. 20 Handset has a balanced appearance resulting from the use of a flat transmitter mouthpiece which is similar in shape to the receiver earcap. This type of mouthpiece gives less variation in pick-up of the voice when the transmitter is moved about in front of the mouth. The handset, mouthpiece and earcap are made of tough molded material. All connections are made through spring contacts, securely fastened to inserts which are molded into the handle. Both the receiver and transmitter are complete units, so designed that they are simply placed in their respective compartments and clamped tightly in place by the earcap and mouthpiece. No centering or wire fastening is necessary.

The Transmitter is patterned after those used with previous handsets, which have gained well deserved recognition in the telephone field. High in fidelity and unusually good on long and short lines, reproducing the voice naturally in any position in which it is held, it retains the clear articulation demanded by modern telephone practice. Spring-pressure contacts in the transmitter compartment enable the transmitter to be dropped in position and to make reliable connections when the mouthpiece is screwed into position.

The Receiver used in the No. 20 Type Handset was designed especially for this unit. It is of the capsule type and provides a smoother, less resonant response frequency characteristic than any previous Stromberg-Carlson receiver. Improved articulation is secured by placing the resonant peak at approximately 2000 cycles per second while at the same time introducing sufficient damping. When mounted in the handset, two circular contacts engage two spring points, no matter in which position it is placed. This assures positive circuit contacts under spring-pressure as soon as the earcap is screwed down.

Ringers are of the same general construction as those used in No. 1212 Telephones, where they have met with universal approval. Two-toned gongs produce a clear, penetrating signal—free from harshness. The complete ringer is a single unit mounted on rubber to eliminate the clatter which is normally radiated from a solid mounting. The ringer is adjusted and tested separately from the instrument. This allows changes from one frequency to another to be made with the least amount of effort. The only tool required in substituting a ringer is a screw driver.

A Compact Induction Coil with six screw terminals simplifies circuit changes and testing. Proper proportioning of the windings, together with the correct arrangement of sub-station elements results in improvement in transmitting and receiving efficiency and reduced side-tone, compared with our previous standard telephones.

The Capacitor (Condenser) is composed of two separate units, a 2.25 mf. capacitor for the talking circuit and a split 1.00 mf. capacitor (consisting of two .5 mf. units) for the ringing circuit. They are housed in a single light gray finished case. Five wires with spade tips terminate the units, for ready connection to their respective circuit terminals.

The Plunger Switch provides a highly reliable means of controlling the telephone circuit. Chromium-plated plunger rods, one at each end of the cradle, engage a hinged lever which operates the spring pusher regardless of how the handset is placed in the cradle. Reliability of contact operation is insured by the use of twin precious metal contacts on forked springs. The springs are reinforced with stiffeners, so that definite and permanent adjustments in tension can be made.



No. 1222 Handset Telephone
For Dial Service

Nos. 1222 and 1223 Handset Telephones (Cont.)

Wiring for the telephone is in a formed cable that is made of lacquer insulated wire. This insulation possesses qualities essential for use in humid climates and retains its color brilliancy indefinitely. All telephones are wired for both manual and dial service. When the dial is used, the wiring provides for shorting the subscriber station elements including the ringer and capacitor, thus affording clean cut pulsing during dialing. The telephone circuit arrangement is anti-side-tone, and the wiring permits the telephone to be used on lines employing either bridged or divided circuit ringing. Under certain grounded line ringing conditions, Vincent Rare Gas Relays or W. E. Co.'s No. 333-A Tubes are employed to isolate ground from the ringer circuit except while generator current is applied. The Vincent Rare Gas Relay is provided for this purpose for use in harmonic ringing systems while the W. E. 333-A tube is employed in superimposed ringing systems, used in W. E. offices. Mounting and wiring facilities are provided for these units when they are installed. Thus the

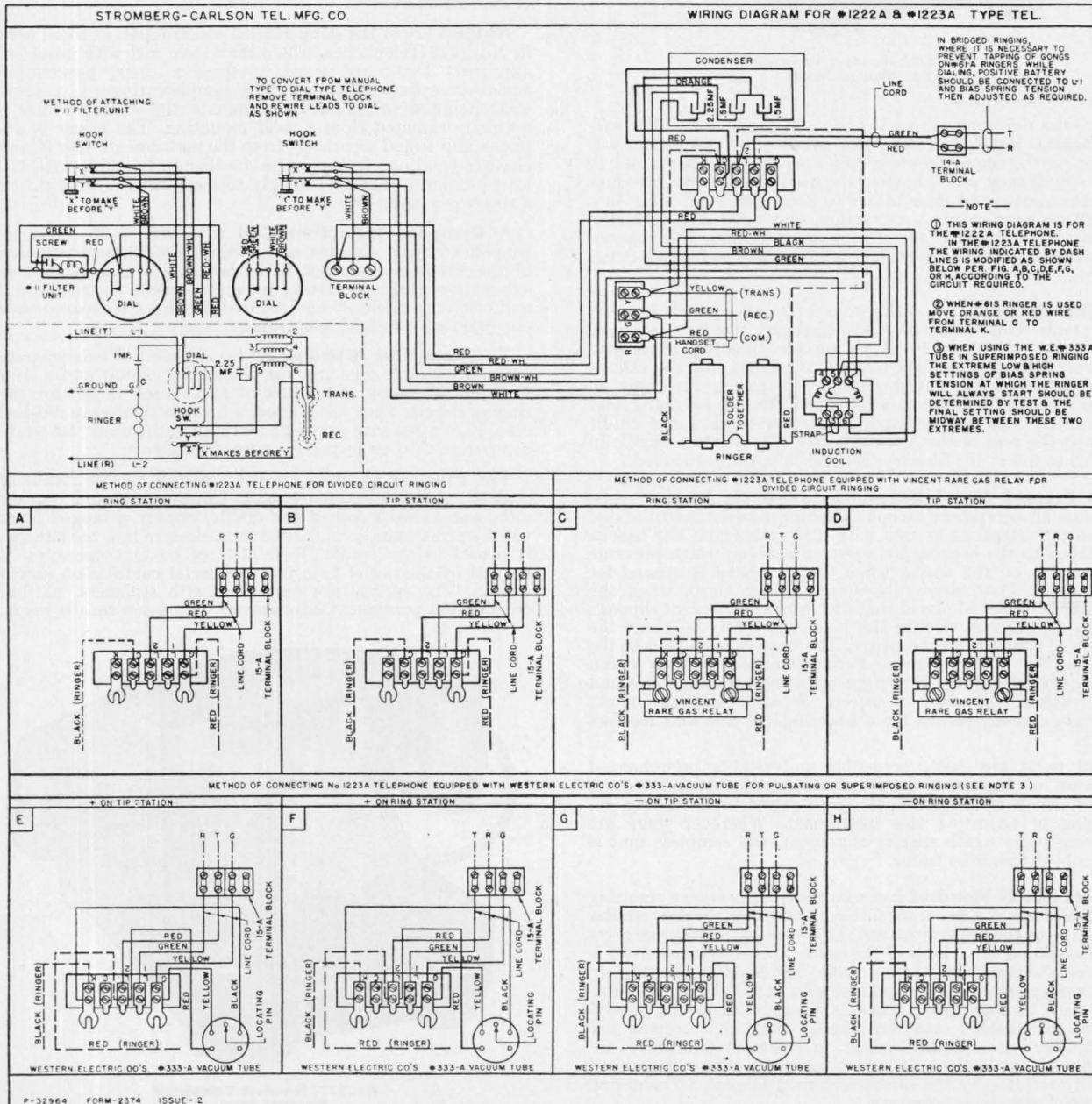
No. 1222 and No. 1223 Telephones are universal in their application to Central Energy lines.

Dial Mounting arrangements are provided. The dial wires are connected to a dummy terminal block. When a dial is installed, it is only necessary to remove these wires, discard the block and attach them to the dial, without disturbing the cable form in any way. Standard A. E. Co.'s, W. E. Co.'s and N. E. Co.'s dials can be furnished at current prices.

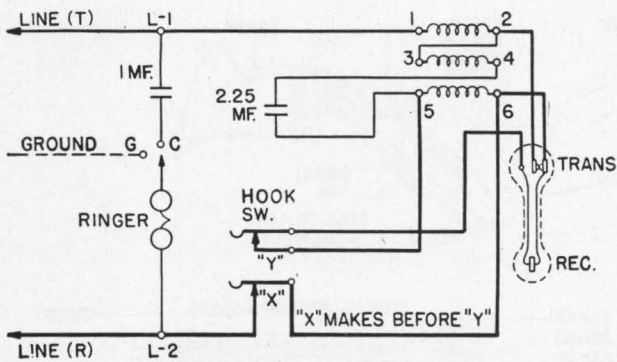
A Dial Opening Cover Plate is furnished with each telephone unless otherwise specified.

A Terminal Block is furnished with the line cord of each telephone. It consists of a black phenol compound base on which brass screw type terminals are mounted. The No. 14-A Terminal Block is used with two conductor line cords and the No. 15-A is used with three conductor line cords.

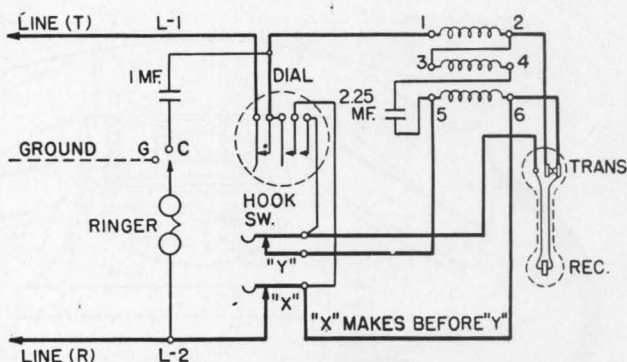
Net Weight—6 lb. 6 oz., packed 7 lbs. 8 oz.



Nos. 1222 and 1223 Telephones (Cont.)



Theoretical Circuit for Manual Telephone



Theoretical Circuit for Dial Telephone

Code Numbers and Prices of Telephones

All Telephones Wired Anti-Side-Tone

Metallic Ringing

Straight Line

Code No.	Description of Ringer	Code No. of Ringer	Price Each
1222-B	1800 Ohms, Straight Line	61-A	\$17.45
Standard Harmonic			
† 1222-EY	16 2/3 Cycles, Fourth Party	60-E	\$18.00
† 1222-FY	33 1/3 Cycles, First Party	60-F	18.00
† 1222-GY	50 Cycles, Second Party	60-G	18.00
† 1222-HY	66 2/3 Cycles, Third Party	60-H	18.00
1222-NY	25 Cycles, Fifth Party	60-N	18.00

†Used with either rotary multi-cycle ringing machines or converters.

Other Frequencies

(for converter operation only)

1222-KX	30 Cycles, First Party	60-K	\$18.00
1222-LX	42 Cycles, Second Party	60-L	18.00
1222-MX	54 Cycles, Third Party	60-M	18.00
1222-PX	66 Cycles, Fourth Party	60-P	18.00
1222-RX	16 Cycles, Fifth Party	60-R	18.00

Divided Circuit Ringing

Straight Line

Code No.	Description of Ringer	Code No. of Ringer	Price Each
1223-B	1800 Ohms, Straight Line	61-A	\$17.45
Standard Harmonic			
† 1223-EY	16 2/3 Cycles, Fourth Party	60-E	\$18.00
† 1223-FY	33 1/3 Cycles, First Party	60-F	18.00
† 1223-GY	50 Cycles, Second Party	60-G	18.00
† 1223-HY	66 2/3 Cycles, Third Party	60-H	18.00
1223-NY	25 Cycles, Fifth Party	60-N	18.00

†Used with either rotary multi-cycle ringing machines or converters.

Other Frequencies

(for converter operation only)

1223-KX	30 Cycles, First Party	60-K	\$18.00
1223-LX	42 Cycles, Second Party	60-L	18.00
1223-MX	54 Cycles, Third Party	60-M	18.00
1223-PX	66 Cycles, Fourth Party	60-P	18.00
1223-RX	16 Cycles, Fifth Party	60-R	18.00

Extension and Two Piece Telephones

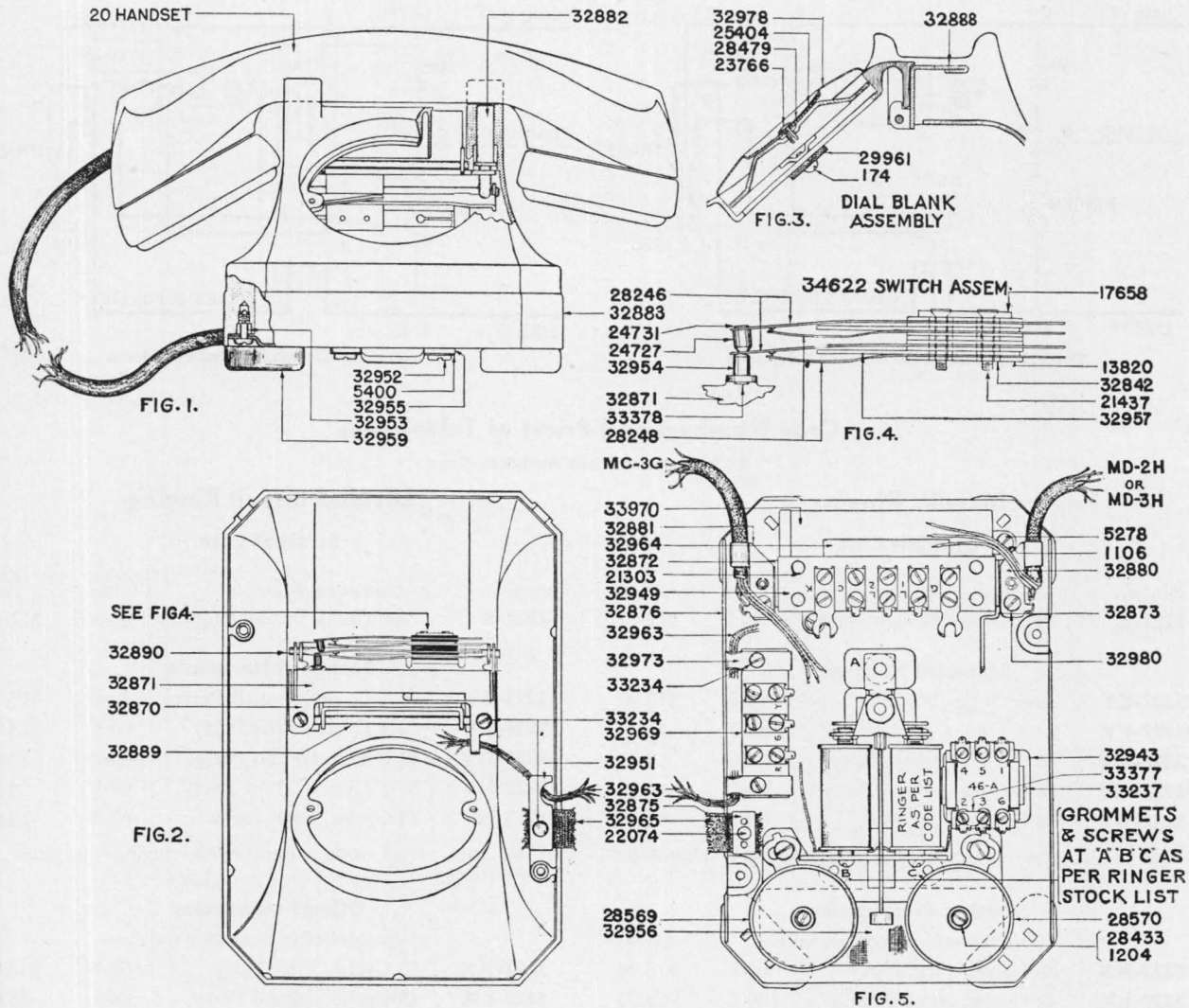
1222	Less Ringer, For Extension Service	\$15.20	1224-A	Less Ringer, Induction Coil and Condenser	\$12.75
				(For use with desk set box)	

General Notes

1. Last digit of code number indicates number of conductors in line cord. No. 1222 is designed for full metallic circuit ringing. No. 1223 is designed for divided circuit ringing. Straight line ringers are equipped with biasing springs.
2. All telephones are equipped with dial blanks unless otherwise specified or unless ordered with dials.
3. If telephones are to be equipped with dials, specify make and code number and add \$4.00 each to the price of any of the above telephones.
4. Wiring is complete and mounting facilities are provided for the installation of the Vincent Rare Gas Relay or the Western Electric No. 333-A Tube when it is found desirable to isolate the ground from the ringer circuit except when ringing is applied to the line. Divided circuit telephones of the No. 1223 type are arranged to be equipped in this manner. An extra charge is made for the installation of these parts at the factory. Add the letter "V" to code when Vincent Rare Gas Relay is to be furnished, add letter "T" to code when W. E. Co.'s 333-A Tube is to be furnished.

11-7-41

Nos. 1222 and 1223 Handset Telephones (Cont.)



Piece Parts of Nos. 1222 and 1223 Telephones. Fig. 1: Front View. Fig. 2: View Inside Housing. Fig. 3: Dial Blank Assembly. Fig. 4: Plunger Switch Assembly. Fig. 5: Assembly of Base.

Piece Parts of Nos. 1222 and 1223 Handset Telephones

Code No.	Description	Price Each	Code No.	Description	Price Each	Code No.	Description	Price Each
174	Screw, Dial Blk.	\$.01	32842	Bushing, Spr. Comb.	\$.015	32969	Terminal Strip	\$.25
1106	Lock Washer, Cond. Mtg.	.0025	32870	Bracket, Spr. Comb.	.15	32976	Screw, Grommet	.02
1204	Lock Washer, SH. Pr.	.0025	32871	Lever	.07	32978	Dial Blank	.40
5278	Screw, Capacitor	.005	32878	Grommet	.10	33237	Screw, Dial	.01
5400	Washer, Ringer Mtg.	.005	32882	Plunger	.30	33378	Stud, Spr. Comb.	.01
13820	Insulation	.01	32883	Housing, Telephone	3.75	33970	Capacitor (No. 48)	1.25
21437	Screw, Spr. Comb.	.015	32889	Rod, Handle	.02	34622	Switch, Spr. Comb. Assem.	1.00
23766	Cap, Dial Blank	.03	32890	Rod, Lever	.03	6 x 3/8	Pk. R. H. Tap Screw	.005
24727	Separator, Spr. Comb.	.015	32943	Induction Coil (No. 46A)	2.00	28569	Gong	*
24731	Stud, Spr. Comb.	.02	32949	Terminal Strip	.30	28570	Gong	*
25404	Protector, Dial Blk.	.03	32952	Screw, Grommet	.02	MC-3G	4 1/2' Cord, Handset	*
28246	Spring Assembly	.11	32953	Screw, Base	.02	MD-2H	6'0" Cord, Line 2 Cond.	*
28248	Spring Assembly	.11	32954	Insulation, Lever Tip	.015	MD-3H	6'0" Cord, Line 3 Cond.	*
28433	Screw, Gong	.0025	32955	Grommet	.04	60	Type Ringer, Harmonic	*
28479	Card, Dial Blk.	.03	32957	Stiffener, Spr. Comb.	.01	61-A	Ringer, Straight Line	*
29961	Terminal Block	.02	32959	Foot Assembly	.08			

*For prices, see separate pages covering items listed.

No. 1212 Handset Telephones

A Self-Contained, Anti-Side-Tone Telephone



No. 1212 Handset Telephone

The Stromberg-Carlson No. 1212 Handset Telephone has been designed with the sole idea of making available an instrument that will not only incorporate the high quality transmission of Stromberg-Carlson Telephones, but also meet the modern requirement that a telephone be an article of household or office equipment blending into the scheme of the furnishings and not appearing as a mechanical device.

With this thought in mind outstanding designers of furniture and furnishings were called into consultation to work out a housing that would accommodate the ringer, induction coil, condenser, and hook switch—all concealed—in a single unit in such a way that access to these parts would be easy; and with sufficiently conservative lines so that it would stay in good taste for many years, and yet would present an exterior that would be applauded by the subscriber as modern, artistic, and a fitting article to install in a convenient location without appearing conspicuous, and enhance the attractiveness of its surroundings.

Handset and Base are made of solid, moulded phenol compound which retains its lustrous finish indefinitely.

Louvres through which the sound from the gongs passes without noticeable restriction are located in the rear of the base and closed by a grille cloth which prevents dust from reaching the moving parts.

The No. 15 Handset Unit is standard equipment.

A Stamped Metal Base mounts the ringer, induction coil, and condenser.

A Rubber Cushion by extending slightly beyond the base and rising vertically to cover the lower edge, in addition to furnishing a transition line between telephone and the table or desk on which it stands provides a three-fold protection:

- (1) Eliminates any marring of furniture.
- (2) Guards against breakage.
- (3) Produces a non-skid instrument which feature is most desirable when used in dial service.

A Stay Cord is used to form a hinge so that when the cradle is swung open from the metal base the conductor cords do not have to act as supports.

Terminal Blocks are furnished on the line cords with facilities for direct connection to the line. These terminal blocks are of black, phenol compound, with brass screw terminals. The No. 14A Terminal Block is used in 2 conductor service and the No. 15A in three conductor.

The Condenser, enclosed in an aluminum finished metal case, is of the twin type having a 2 MF and a 1 MF unit: the former used in the talking circuit and the latter in the ringing circuit. Screw terminals are provided for ease in making connections. It occupies about one-third the space of the regular telephone condenser and yet has built into it the life and service of the Stromberg-Carlson standard telephone condenser. This is accomplished by improvements in manufacturing methods, in the selection of paper, and in the wax materials employed.

The Ringer is constructed along lines that have been in use for many years, but important improvements and adaptations have been made to make its use practical in the limited space of the handset base, with the following outstanding features:

- (1) The gongs are a new shape and made of different thickness of metal so that a two-tone effect is produced. In the development stages a vast amount of experimental work was carried on with various shapes and metals to produce a signal with good carrying qualities but free from harsh, high-pitched vibrations that are annoying to the subscriber.
- (2) Ample winding space has been provided so as to insure an excess power factor for proper functioning and long life.
- (3) The ringer assembly includes all parts—coils—gongs, armature, and adjustment facilities in one unit. The adjustment of the gongs is accomplished by a simple lever and set-screw arrangement.
- (4) Wiring to the ringer is secured by screw terminals so that when it becomes desirable to change the frequency of a subscriber station the change can be made without the use of a soldering iron or removal of the instrument from its location.

The Hookswitch is of the long plunger type with sufficient travel of the plunger so that positive action is assured even though the cord may catch between the cradle and the handset. The plunger elevating spring is a strong spiral one that operates against a moulded collar on the plunger. It has sufficient strength to assure positive lifting of the plunger when the handset is removed. The long and flexible contact springs are designed and clamped in such a way as to retain their position and tension indefinitely. The tips of the switch springs are formed to make a rounded point contact to the plunger. No sharp edges can come in contact with the plunger to produce unnecessary wear.

The Induction Coil is the No. 23124 described under coils in the Coded Parts section of this catalogue.

Wiring is formed into a neat cable. The anti-side-tone circuit is used and the wiring is arranged so that the telephone may be used on bridging or divided circuit lines. A two or a three conductor line cord is furnished depending on the type of circuit in which the telephone is to be installed.

Dial Mounting—The moulded base is designed to accommodate a dial. Terminals are provided for connecting into the circuit, and when the order indicates that the telephone will be used for dial service the wires necessary for installing the dial are included. Standard A. E. Co.'s, W. E. Co.'s, and N. E. Co.'s Dials can be furnished at current prices.

Cover Plate for dial opening can be furnished when this telephone is ordered for manual service at no extra charge. However, telephone is normally shipped less cover unless order indicates cover is desired.

Net Weight 4¾ lbs.

8-5-40

1212 Handset Telephone (Cont.)

Metallic Ringing

Divided Circuit Ringing

Metallic Ringing		Straight Line		Divided Circuit Ringing			
Code No.	Description of Ringer	Code No.	Price Each	Code No.	Description of Ringer	Code No.	Price Each
1212-AB	1400 Ohms, Straight Line	55-A	\$17.45	1212-ADB	1400 Ohms, Straight Line	55-A	\$17.45
1212-ABZ	1400 Ohms, Straight Line Biased	56-A	17.45	1212-ADBZ	1400 Ohms, Straight Line Biased	56-A	17.45
Metallic Ringing		Standard Harmonic		Divided Circuit Ringing			
† 1212-AE	16 2/3 Cycles, (Fourth Party)	57-E	\$18.00	† 1212-ADE	16 2/3 Cycles, (Fourth Party)	57-E	\$18.00
† 1212-AF	33 1/3 Cycles, (First Party)	57-F	18.00	† 1212-ADF	33 1/3 Cycles, (First Party)	57-F	18.00
† 1212-AG	50 Cycles, (Second Party)	57-G	18.00	† 1212-ADG	50 Cycles, (Second Party)	57-G	18.00
† 1212-AH	66 2/3 Cycles, (Third Party)	57-H	18.00	† 1212-ADH	66 2/3 Cycles, (Third Party)	57-H	18.00
1212-AN	25 Cycles, (Fifth Party)	57-N	18.00	1212-ADN	25 Cycles, (Fifth Party)	57-N	18.00

†Used with either rotary multi-cycle ringing machines or converters.

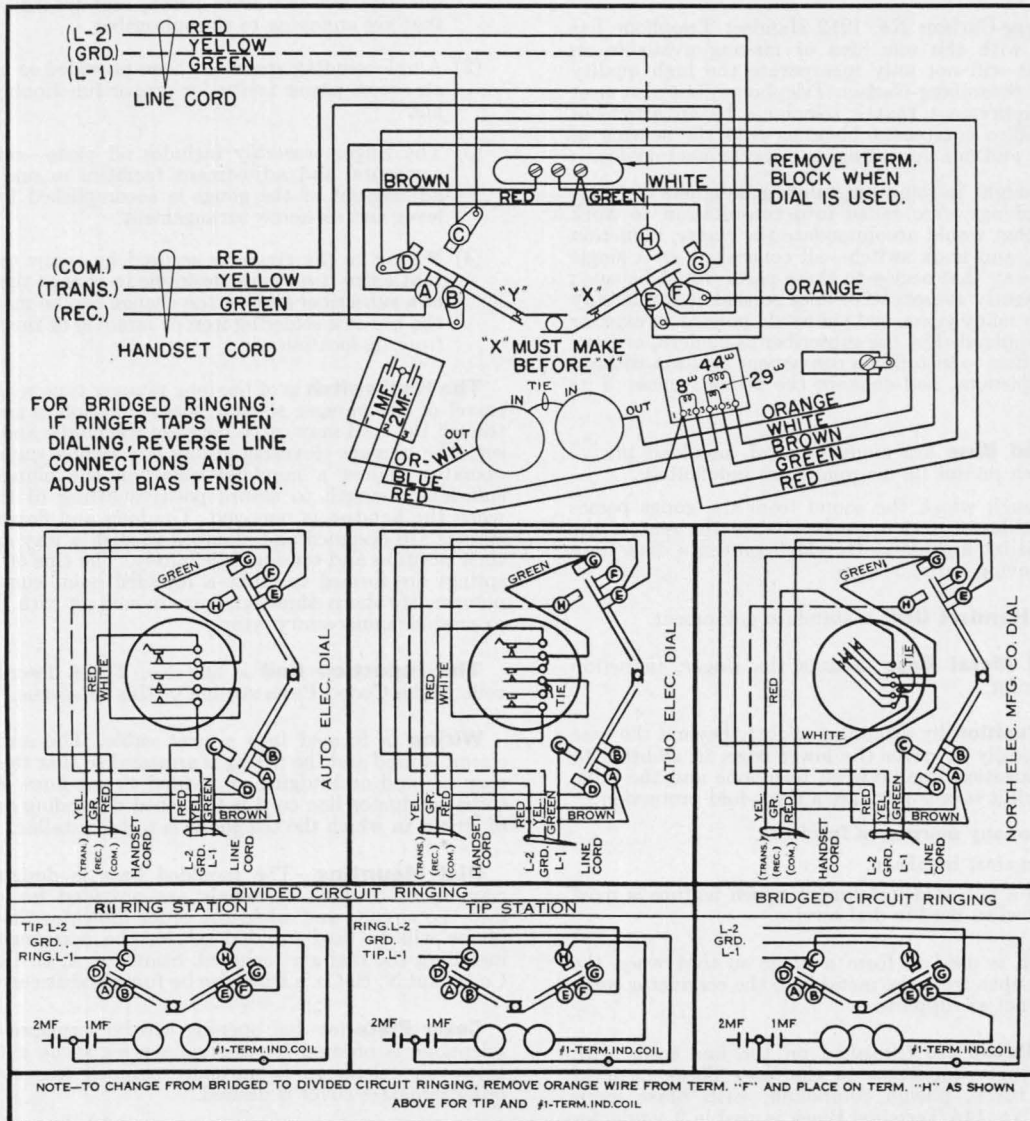
Other Harmonic frequencies can be furnished as follows:

(These telephones for converter operation only.)

1212-AK	30 Cycles, (First Party)	57-K	\$18.00	1212-ADK	30 Cycles, (First Party)	57-K	\$18.00
1212-AL	42 Cycles, (Second Party)	57-L	18.00	1212-ADL	42 Cycles, (Second Party)	57-L	18.00
1212-AM	54 Cycles, (Third Party)	57-M	18.00	1212-ADM	54 Cycles, (Third Party)	57-M	18.00
1212-AP	66 Cycles, (Fourth Party)	57-P	18.00	1212-ADP	66 Cycles, (Fourth Party)	57-P	18.00
1212-AR	16 Cycles, (Fifth Party)	57-R	18.00	1212-ADR	16 Cycles, (Fifth Party)	57-R	18.00

In ordering for manual service be sure to state "To be equipped with dial blank."

If dials are ordered with telephones state make of dial and spring combination or code.



Wiring Diagrams of No. 1212 Handset Telephone

1212 Handset Telephone (Cont.)

NO. 15 HANDSET
(3 COND. CORD)

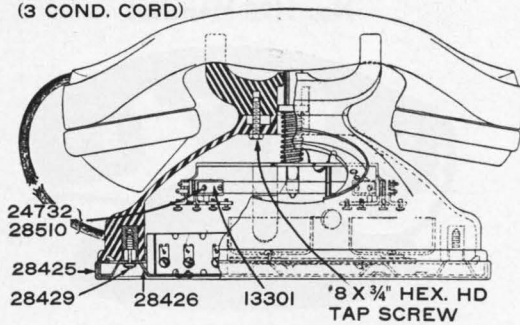


Fig. 1

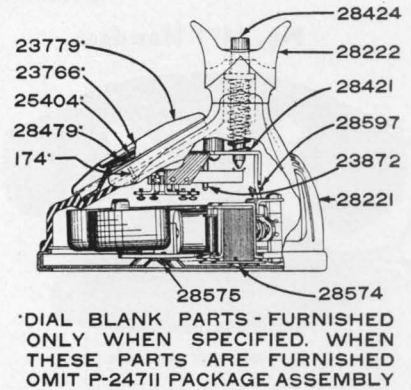


Fig. 2

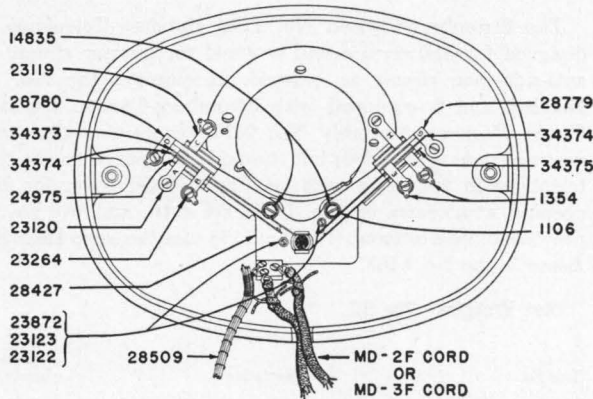


Fig. 3

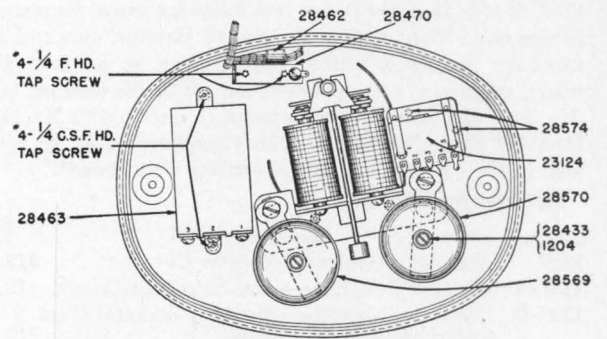
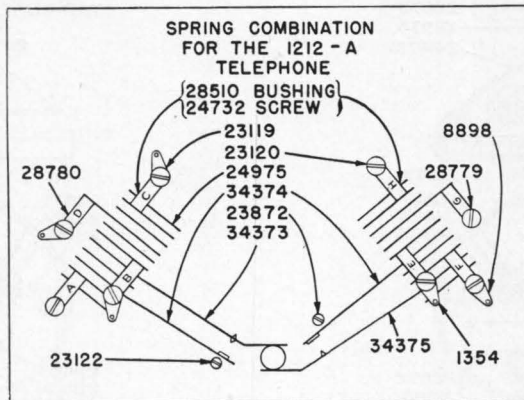


Fig. 4

Piece Parts of the No. 1212 Handset Telephone. Fig. 1: Front View. Fig. 2: End View. Fig. 3: Looking into The Cradle—Base Removed. Fig. 4: Base.

Piece Parts of No. 1212 Handset Telephone



Line Drawing of the Spring Combination of the 1212 Handset.

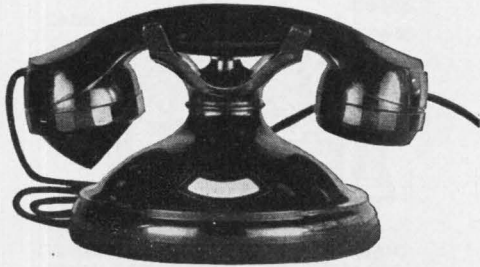
Code No.	Description	Price Each	Code No.	Description	Price Each	Code No.	Description	Price Each
23119	Terminal (Right)	\$.03	28426	Cover (Bottom)	\$.75	28569	Gong	*
23120	Terminal (Left)	.03	28463	Condenser	1.25	28570	Gong	*
23124	Induction Coil	2.00	28470	Terminal Block	.15	#15	Handset	*
28221	Base	2.00	28779	Terminal (Right)	.03	MD-2F	5'3" Cord for 1212A	*
28222	Cradle	.85	28780	Terminal (Left)	.03	MD-3F	5'3" Cord for 1212AD	*
28421	Plunger Spring	.05	34373	Contact Spring (1)	.11	MC-3F	4'9" Cord for 15 H. S.	*
28424	Plunger	.25	34374	Contact Spring (2) †	.11			
28425	Rubber Cushion	.30	34375	Contact Spring (1)	.11			

†These springs in one complete assembly, mounted on bracket with insulations priced at \$1.25.

11-7-41 REPLACES 8-5-40

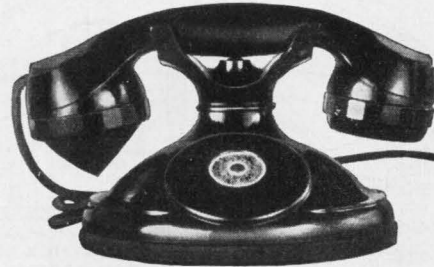
Nos. 1197 and 1198 Type Handset Telephones

No. 1197 Handset



No. 1197 Handset

No. 1198 Handset



No. 1198 Handset

The Stromberg-Carlson No. 1197 and No. 1197-A Handset Telephones are two piece sets used with Nos. 1156, 1209, 1217, or 1218 Desk Set Boxes, (See following pages) for manual service only. They employ the No. 15 Handset unit and are wired for booster or anti-side-tone circuit as ordered. The ringer, condenser, and induction coil are in the desk set box. (No. 1197 may also be used for magneto service with No. 1180 Desk Set Box.) No. 1197-B with 4 conductor desk set cord, used in the operator's circuit of cordless switchboards.

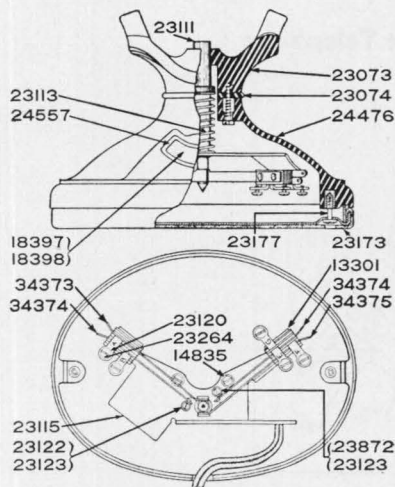
Net Weight—2¾ lbs.

Code No.	Description	Price Each
1197	Handset Telephone—Booster Circuit	\$12.65
1197-A	Handset Telephone—Anti-Side-Tone Circuit	12.75
1197-B	Handset Telephone—Used as operator's set with cordless switchboards	12.75
1207	Handset Telephone—With Induction Coil in Base (see Magneto Telephones)	13.60

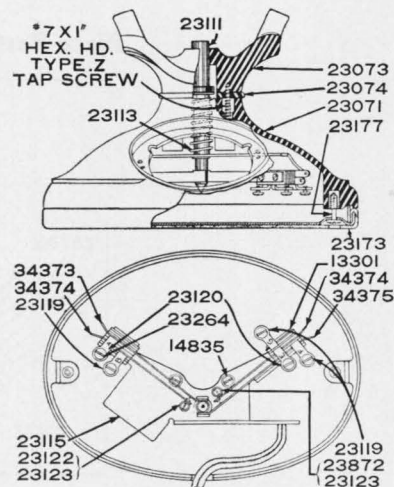
The Stromberg-Carlson No. 1198 Handset Telephone is designed for dial service and is wired for booster circuit or anti-side-tone circuit as ordered. It employs the No. 16 Handset and is equipped with Stromberg-Carlson Duratex Cords. Package Assembly No. 24711 containing dial connecting cords is included; but should it be desired to use this telephone in manual service be sure to order cover for dial opening, at no extra charge. Dials are extra and will not be provided unless ordered. The No. 1198 uses the same Desk Set Boxes as the No. 1197.

Net Weight—2¾ lbs.

Code No.	Description	Price Each Less Dial
1198	Handset Telephone—Booster Circuit	\$12.65
1198-A	Handset Telephone—Anti-Side-Tone Circuit	12.75



Piece Part Numbers of 1197 Handset



Piece Part Numbers of 1198 Handset

Piece Parts of Nos. 1197 and 1198 Handsets

Code No.	Description	Price Each	Code No.	Description	Price Each	Code No.	Description	Price Each
23071	Base of 1198	\$1.50	24476	Base of 1197	\$1.75	MC-4F	4'9" Cord for No. 16	*
23073	Cradle	.85	25677	Ind. Coil (No. 1207)	1.75	MD-3G	5'3" Cord for 1197, 1198 and 1207	*
23111	Plunger	.25	34373	Spring Assembly	.11	MD-4G	5'3" Cord for 1198-A and 1197-B	*
23113	Spring	.05	34374	Spring Assembly	.11	MD-4G	6'6" Cord for 1197-A	*
23119	Terminal (1198) Rt.	.03	34375	Spring Assembly	.11			
23120	Terminal (Left)	.03	15	Handset	*			
23173	Cover, Bottom	.60	16	Handset	*			
23609	Spring Assembly	.11	MC-3F	4'9" Cord for No. 15	*			

*For prices, see Coded Parts Section of Catalog.

Handset Wall Telephones

Handset Wall Telephones often are more practical than desk type telephones because they can be mounted where space is not required for other equipment; for instance—they may be mounted in the foot well or at the end of a desk where they will be out of the way of the person working at the desk.

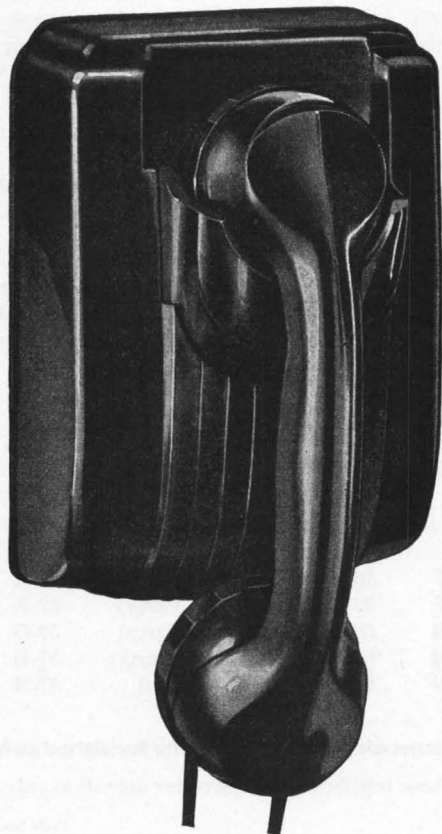
Stromberg-Carlson Handset Wall Telephones possess the same high qualities of reception and transmission as the other Stromberg-Carlson Handsets.

Handset Wall Telephones are available in various designs, as follows:

- (1) **The No. 1211** which is a strikingly modern instrument for residential, hotel, or club use; or may be found appropriate in directors' rooms of banks, factories, business institutions, or on boats.
- (2) **The 1201** which is a two piece instrument, consisting of a handset with an associated hookswitch box and a separate bell box. It is especially desirable where space is at a premium.

These Handset Wall Telephones are available for manual or dial use, in booster or in anti-side-tone circuits, or metallic or divided circuit ringing; and invariably present Stromberg-Carlson standards of quality and service.

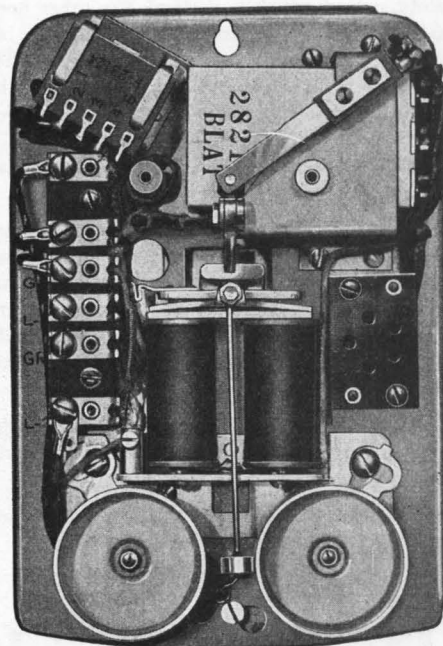
No. 1211 Handset Wall Telephone



No. 1211-M Handset Wall Telephone

The Stromberg-Carlson No. 1211-M Handset Wall Telephone has been designed to give the user of wall type telephones Stromberg-Carlson transmission and reception together with something extra in attractiveness. This telephone is beautiful. It is just modernistic enough to be in vogue for many years to come. It is just conservative enough to fit any surroundings.

The Case is of moulded phenol compound which retains its lustrous black finish indefinitely. The louvres through which the sound from the gongs passes without noticeable



View of No. 1211-M Handset Wall Telephone with case removed, showing the compact arrangement of ringer, terminal strip, induction coil, and condenser on its pressed metal base. Notice, too, the bayonet slots at the top and bottom to simplify mounting.

restriction are concealed by ribbing that follows the contour of the box and handset, to make the whole instrument appear to have even less depth than it actually has.

The Socket from which the handset is suspended is made of the same material as the case or box, is integral with it, and designed so that regardless of the angle at which the handset is placed on it the handset itself comes to rest in a vertical position in the face or front of the case, insuring positive action of the hookswitch.

7-10-41 REPLACES 8-5-40

No. 1211 Handset Telephone (Cont.)

The Hookswitch is arranged with a short arm which is its only moving part. This assures positive action over a long period of time without adjustment. The springs are equipped with twin contacts to insure, good, low resistance connections.

A Stamped Metal Base mounts all of the apparatus and furnishes facilities for concealed installation screws.

The Ringer is the same as that used in the 1212 Handset Telephone.

It is equipped with two gongs of different weight metal, giving a pleasing tone and tuned for maximum audibility.

The Induction Coil is the same as that used on C.E. Stromberg-Carlson Handset Telephones which have their induction coils in their bases.

The No. 15 Handset with its famous transmitter and receiver is standard equipment on Stromberg-Carlson No. 1211 Handset Wall Telephones.

The Anti-Side-Tone Circuit is used.

To Mount—In the metal back of this telephone are two bayonet slots, one of which is vertical, the other horizontal. These make possible the simplest and quickest way of installing a wall type telephone. Two screws are sunk. Then the top bayonet slot is fitted over the upper screw. The base, then swinging on this upper screw as a pivot, is dropped a fraction of an inch, diagonally over the lower screw, pushed back against the place where the telephone is to be mounted, and twisted onto the lower bayonet slot.

For Dial Service—When dials are required for immediate service a small dial case of black phenol compound is mounted on the flat top. This dial case resembles in appearance a handsome, modernistic, black clock, from which run the necessary cords into the telephone case for dial installation—unseen—out of the way. The dial case by its attractiveness becomes an integral part of the whole telephone.

Where future dial service is anticipated the telephone is wired for dial and equipped with blanks for covering dial case mounting holes.

Dimensions—7 $\frac{1}{8}$ ins. high; 5 $\frac{3}{8}$ ins. wide; 3 $\frac{3}{4}$ ins. deep. With handset in place the maximum depth is 5 ins.

Net Weight—5 $\frac{1}{4}$ lbs.

Manual Service Metallic Ringing

These telephones are arranged for dial and equipped with blanks covering dial case mounting holes.

Straight Line

Code No.	Description	Code No. of Ringer	Price Each
1211-M-B	1400 Ohms, Straight Line	55-A	\$17.00
1211-M-BZ	1400 Ohms, Straight Line Biased	56-A	17.00

Standard Harmonic

† 1211-M-E	16 $\frac{2}{3}$ Cycles, (Fourth Party)	57-E	17.55
† 1211-M-F	33 $\frac{1}{3}$ Cycles, (First Party)	57-F	17.55
† 1211-M-G	50 Cycles, (Second Party)	57-G	17.55
† 1211-M-H	66 $\frac{2}{3}$ Cycles, (Third Party)	57-H	17.55
1211-M-N	25 Cycles, (Fifth Party)	57-N	17.55

†Used with either rotary multicyle ringing machine or converters.

Other Harmonic frequencies can be furnished as follows:

(These telephones for converter operation only.)

1211-M-K	30 Cycles, (First Party)	57-K	\$17.55
1211-M-L	42 Cycles, (Second Party)	57-L	17.55
1211-M-M	54 Cycles, (Third Party)	57-M	17.55
1211-M-P	66 Cycles, (Fourth Party)	57-P	17.55
1211-M-R	16 Cycles, (Fifth Party)	57-R	17.55

No. 1211-M Type Handsets are arranged for future dial use by removal of a dummy plug and adding P-29617 Package Assembly. This consists of P-28476 Dial Case, P-28505 Back Cover, and P-28542 Dial Cord and Plug Assembly.

Code No.	Description	Price Each
29617	Package Assembly	\$1.00

Divided Circuit Ringing

As all of the above handsets are now arranged so that they may be used for divided circuit ringing by a simple change made on the terminal block the former codes denoting divided circuit ringing handsets have been abandoned.

Dial Service Metallic Ringing

These telephones include dial mounting case and wiring for dial service. Dials are extra equipment. When No. 1211-A dial service Type Telephones are ordered, the No. 1211-M Type Telephone is used in filling the order, together with a separate P-29617 Package Assembly to be mounted by the customer at the time of mounting the dial. The dial case is assembled to the telephone in the factory only when so specified on the order.

Straight Line

Code No.	Description	Code No. of Ringer	Price Each
1211-ABZ	1400 Ohms, Straight Line Biased	56-A	\$17.00

Standard Harmonic

† 1211-AE	16 $\frac{2}{3}$ Cycles, (Fourth Party)	57-E	17.55
† 1211-AF	33 $\frac{1}{3}$ Cycles, (First Party)	57-F	17.55
† 1211-AG	50 Cycles, (Second Party)	57-G	17.55
† 1211-AH	66 $\frac{2}{3}$ Cycles, (Third Party)	57-H	17.55
1211-AN	25 Cycles, (Fifth Party)	57-N	17.55

Other Harmonic frequencies can be furnished as follows:

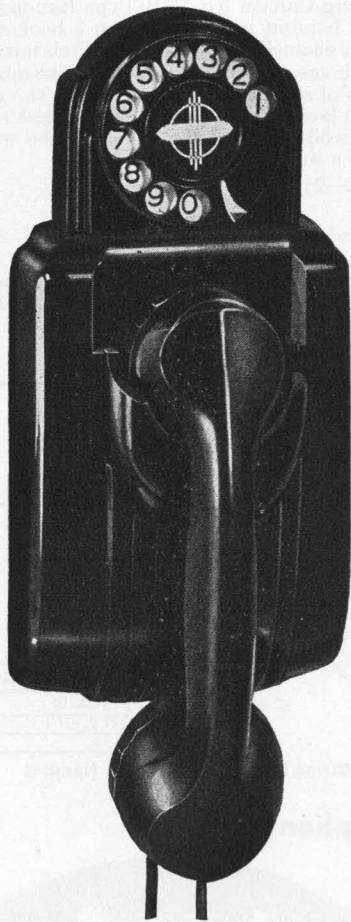
(These telephones for converter operation only.)

Code No.	Description	Code No. of Ringer	Price Each
1211-AK	30 Cycles, (First Party)	57-K	\$17.55
1211-AL	42 Cycles, (Second Party)	57-L	17.55
1211-AM	54 Cycles, (Third Party)	57-M	17.55
1211-AP	66 Cycles, (Fourth Party)	57-P	17.55
1211-AR	16 Cycles, (Fifth Party)	57-R	17.55

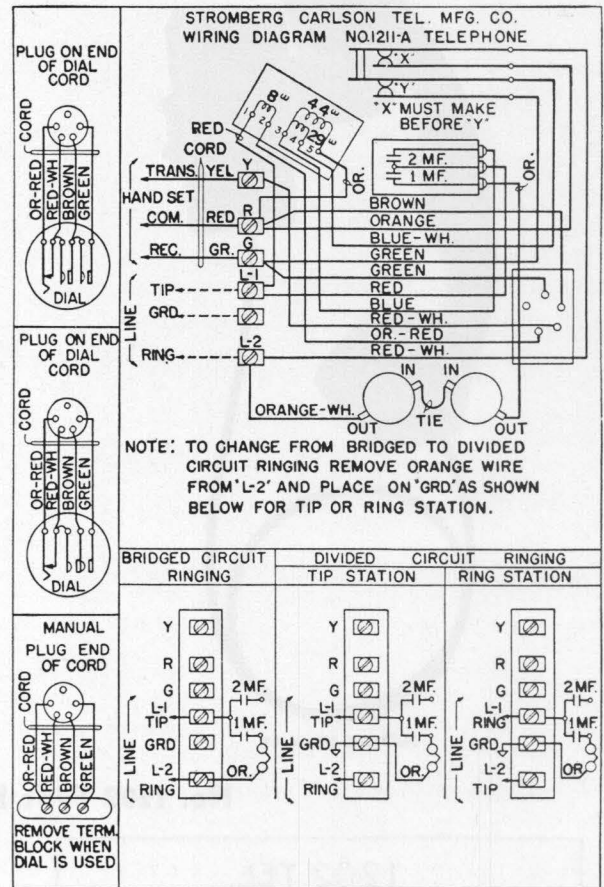
Dial Service Divided Circuit Ringing

As all of the telephones listed above are now arranged so that they may be used for divided circuit ringing by a simple change in the terminal block the former codes denoting divided circuit instruments have been abandoned.

No. 1211 Handset Wall Telephone



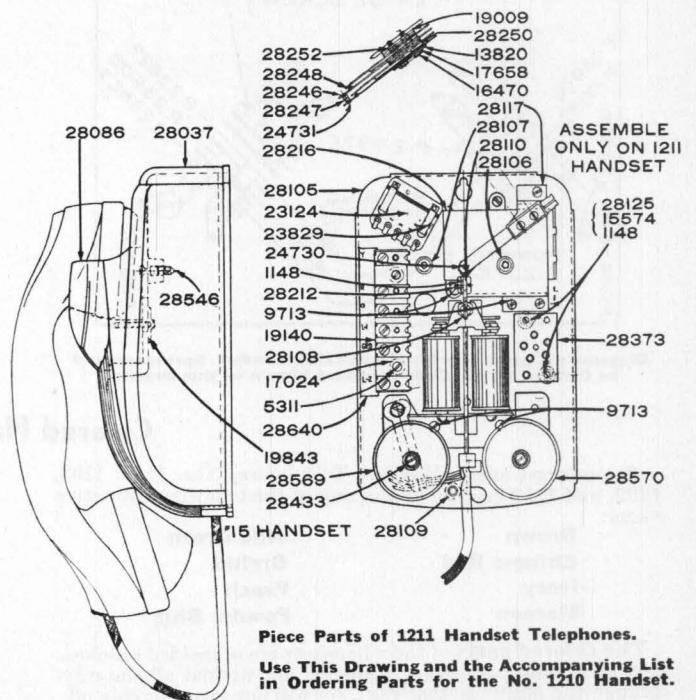
No. 1211 Handset Wall Telephone Dial Equipped



Parts of No. 1211 Handset Wall Telephone

Code No.	Description	Price Each
19140	Terminal Strip Assembly	\$.30
23124	Induction Coil	2.00
28037	Case (1210)	1.75
28086	Holder	.60
28108	Lever	.30
28373	Plug	.05
28476	Dial Case	.75
28505	Dial Case Back Cover	.05
28518	Case (1211)	2.00
28569	Gong	.15
28570	Gong	.15
28542	Cord with Plug	.50
29503	Plug	.10

Ringers less gongs should be ordered from the list of 1211 Handset Telephones on the foregoing page. In this list the code number of each 1211 is shown and following is stated the code number of the correct ringer.



Piece Parts of 1211 Handset Telephones.

Use This Drawing and the Accompanying List in Ordering Parts for the No. 1210 Handset.

No. 1201 Type Handset Telephone



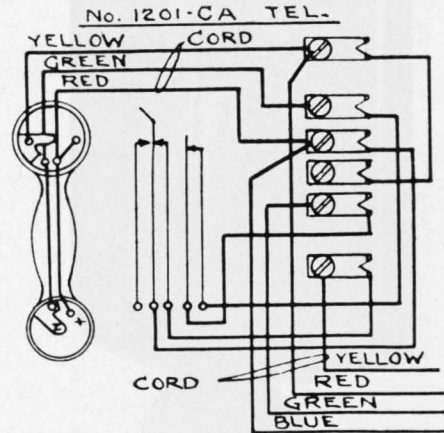
No. 1201 Handset

The Stromberg-Carlson No. 1201 Type Handset Telephone is a suspended handset unit, hung from a hookswitch at the side of a small, enamelled, metal hookswitch box.

These telephones are equipped with Stromberg-Carlson Duratex Cords of sufficient length to permit the mounting of the hookswitch box in the well of a desk, a desk's end, or the leg of a table while the bell box is out of the way on some unused part of a wall.

Net Weight—2½ lbs.

Code No.	Description	Price Each
1201-C	Handset Telephone—Booster Circuit—Uses No. 1156 BY Desk Set Box.	\$12.15
1201-CA	Handset Telephone — Anti-Side-Tone — Uses No. 1156 AB or 1209 B Desk Set Box.	12.15



Wiring Diagram of 1201-CA Handset

No. 1202 Type Handset Telephone

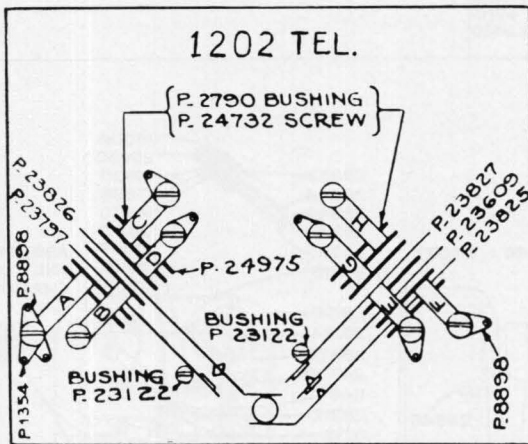


Diagram of Spring Combination of 1202 Handset. Springs should be Ordered by the Code Numbers Shown in this Drawing



No. 1202 Handset Telephone

The Stromberg-Carlson No. 1202 Handset Telephone is designed for use as a Local Secondary Station. Takes No. 1158-B Desk Set Box, same base as No. 1197 (P-24476).

Net Weight—2¾ lbs.

Code No.	Description	Price Each
1202	Handset Telephone	\$15.20

Colored Handsets

Stromberg-Carlson Handset Telephones, Nos. 1197, 1198, 1202, and 1212 may be had in any of the following attractive colors:

- | | |
|--------------------|--------------------|
| Brown | Nile Green |
| Chinese Red | Orchid |
| Ivory | Peach |
| Maroon | Powder Blue |

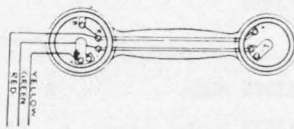
The colored parts of these handsets are of molded cellulose acetate in which the color pigments are worked all the way through the plastic so that the color will not wear nor chip off.

In all other respects these handsets are identical with their black equivalents; for example: you can purchase a No. 1212 in black or in color and obtain exactly the same mechanical construction and fine performance.

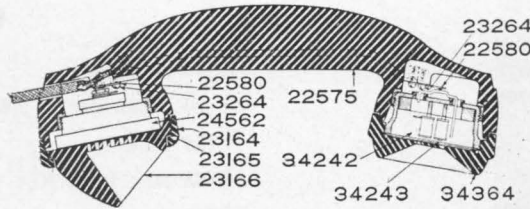
Cords—The Duratex cords used with colored Handsets are finished in suitable colors to harmonize with the Handsets, themselves.

Bell Boxes—For colored Handsets specify the bell box needed and name the color. The colored bell boxes are of enamelled metal tinted to harmonize with the Handset specified.

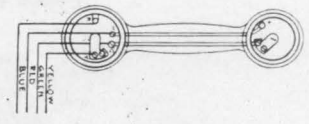
No. 15 Type Handset



Wiring Diagram of No. 15 Handset



Piece Parts of the No. 15 Handset



Wiring Diagram of No. 16 Handset

The No. 15 or No. 16 Handset is used with the following Handset Telephones—1191, 1192, 1195, 1197, 1198, 1201, 1202, 1210, 1211, 1212, 1215, and 1216. The handle is made of black phenol compound for standard sets and of cellulose acetate in the colored units.

The Receiver is made of carefully selected materials to provide uniformly high efficiency. Each receiver is assembled and tested as a complete unit before being threaded into the handle. The diaphragm is maintained in a correct position with relation to the rest of the receiver. As a result of careful design and workmanship a receiver of excellent receiving characteristics is obtained.

The Transmitter operates satisfactorily under the low current conditions of Long Lines and the heavy currents of Short Lines. It is quiet in operation and provides voice transmission with fine articulation. An outstanding feature which makes this possible is found in the design of the diaphragm. The center of the diaphragm is cone shaped while annular corrugations near the outer edge give the flexibility necessary to permit the center to move freely as a rigid unit.

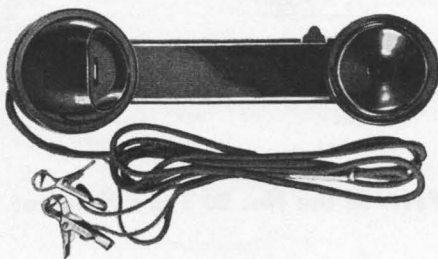
Code No.	Description	Cord Used	Price Each With Cord
15	Handset	MC-3F 4'9"	\$7.00
16	Handset	MC-4F 4'9"	7.00

(Used with D-2819 Wall Telephone)

Parts of No. 15 Handset

Code No.	Description	Price Each	Code No.	Description	Price Each	Code No.	Description	Price Each
23164	Clamping Collar	\$.35	22575	Phenolic Handle	\$2.75	34243	Diaphragm	\$.05
23165	Tension Ring, nic. silver	.06	22580	Spring	.11	34364	Phenolic Earcap	.35
23166	Phenolic Mouthpiece	.50	24562	Transmitter	2.50	MC-3F	Cord 4'9" No. 15	*
*For Prices see Coded Parts Section.			34242	Receiver	2.20	MC-4F	Cord 4'9" No. 16	*

No. 19 Handset (Test Set)

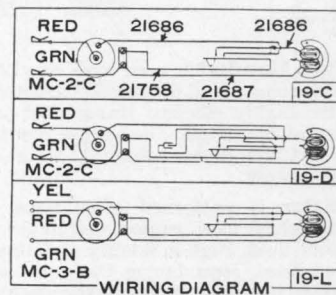


No. 19 Type Handset

No. 19 Handsets are used primarily as test sets by service men working on Central Energy Lines. Compact and sturdy, they can be carried readily in a lineman's pocket.

Transmitter and receiver units are mounted on a black enameled metal handle with rounded edges. A switch is provided in the handle to cut the handset into service when it is connected to the line.

Net Weight—1 lb. 9 oz.

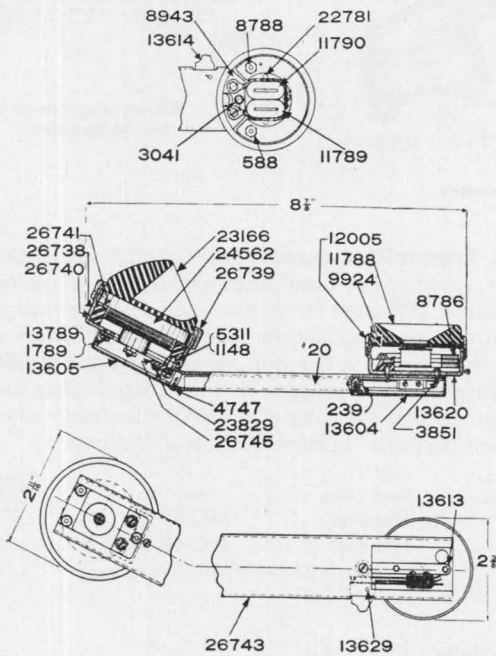


Code No.	Description	Price Each
19-C	Used with Central Energy Systems as a test set or as an extension Telephone. Equipped with a 2 conductor Duratex Cord, MC-2C 6'0"	\$11.75
19-D	Used for testing and service observation in machine ringing systems. Equipped with a condenser and 2 conductor Duratex Cord, MC-2C 6'0"	12.50
19-L	Used on No. 843 Test Set portable field telephone. Equipped with 3 conductor Duratex Cord, MC-3B 6'0"	11.75

12-12-41 REPLACES 8-5-40

No. 19 Handset (Cont.) (Test Set)

Piece Parts



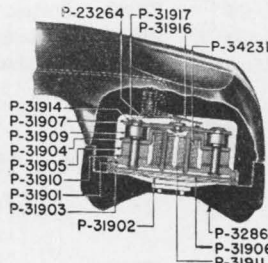
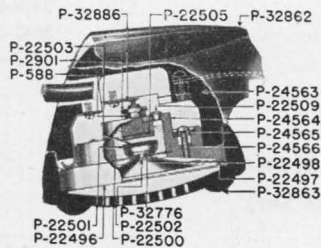
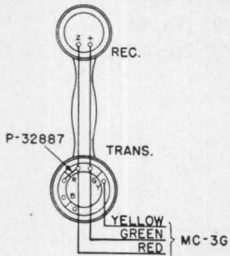
Piece Parts

Code No.	Description	Price Each	Code No.	Description	Price Each
20	Condenser	\$ *	13605	Slide	\$.27
239	Bushing	.01	13613	Switch Assem.	.55
588	Hex. Brass Nut	.01	13620	Shell	.39
1148	Hexagonal Nut	.01	21686	Cord	.05
3041	Brass Screw	.03	21758	Cord	.05
3851	Brass Screw	.02	22781	F.H.B.M. Screw	.01
8786	Magnet	.20	23166	Mouthpiece	.50
8788	F.H.B.M. Screw	.01	24562	Transmitter	*
8943	Term. Assem.	.30	26738	Trans. Shell	.70
9924	Diaphragm	.05	26739	Clamp. Ring	.75
11788	Ear Cap	.16	26740	Phenol Ring	.25
11789	Coil	.45	26741	Felt Ring	.04
11790	Coil	.45	26743	Handle Assem.	2.00
12005	Collar	.49	26745	Term. Block	.10
13416	Receiver	3.10	MC-2-C	Cord, 19-C, 19-D	*
13604	Slide	.11	MC-3-B	Cord, 19-L	*

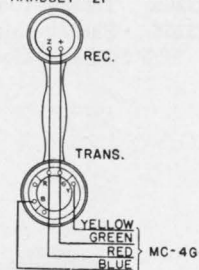
*For prices, see Coded Parts Section.

No. 20 Handset

WIRING DIAGRAM
HANDSET #20



WIRING DIAGRAM
HANDSET #21



The No. 20 Type Handset is used with No. 1222 and No. 1223 Handset Telephones. Well balanced, attractive and compact, it houses the highly efficient transmitter and receiver described below in further detail. The handle, mouthpiece, and earcap are made of tough molded material which retains the original finish indefinitely.

The Transmitter is patterned after those used with previous handsets, which have gained well deserved recognition in the telephone field. High in fidelity and unusually good on long and short lines, reproducing the voice naturally in any position in which it is held, it retains the clear articulation demanded by modern telephone practice. Spring-pressure contacts in the transmitter compartment enable the transmitter to be dropped in position and to make reliable connections when the mouthpiece is screwed into position.

The Receiver used in the No. 20 Type Handset was designed especially for this unit. It is of the capsule type and provides a smoother, less resonant response frequency characteristic than any previous Stromberg-Carlson receiver. Improved articulation is secured by placing the resonant peak at approximately 2000 cycles per second while at the same time introducing sufficient damping. When mounted in the handset, two circular contacts engage two spring points, no matter in which position it is placed. This assures positive circuit contacts under spring-pressure as soon as the earcap is screwed down.

Code No.	Description	Cord Used	Price Each With Cord
20	Handset	MC-3G 4'6"	\$7.00
21	Handset	MC-4G 4'6"	7.00
22	Handset	MC-2G 4'6"	7.00

Parts of the No. 20 Type Handset

Code No.	Description	Price Each
23264	Screw, Contact Springs	\$.005
24562	Transmitter Unit	2.50
31916	Spring, Receiver	.05
31917	Spring, Receiver	.05
32862	Handle	2.75
32863	Mouthpiece	.45
32864	Ear Cap	.35
32884	Spring, Transmitter	.06
32886	Spring, Transmitter	.07
32887	Connector	.005
34230	Receiver	3.00
MC-2G	4'6", No. 22 Handset	*
MC-3G	4'6", No. 20 Handset	*
MC-4G	4'6", No. 21 Handset	*

*For prices, see Cord Section of Coded Parts.

Nos. 1155 and 1157 Type Wall Telephones



No. 1155 Type Wall Telephone

A very compact telephone which presents a neat appearance for use in residences and hotels. Gongs are enclosed, together with the other working parts, in a pressed steel box, finished in black enamel. Box is so designed that all the parts are easily accessible. Equipment consists of either No. 46 Straight Line or No. 47 Harmonic Type Ringer, No. 21 Condenser, No. 44 Type Induction Coil, No. 27-A Receiver with No. MR-2-G 3 ft. Cord, No. 20 Transmitter and No. P-13824 Hookswitch. The telephone is wired for Booster Circuit.

Enclosed gongs give a neat appearance, leave no inaccessible place for dust to accumulate and reduce the tendency of subscribers to damage the instrument by attempting to change tone of gongs.

A convenient retaining screw loosened a few turns, opens the box, exposing all the working parts for inspection or repairs.

Bayonet slots permit removal of transmitter by simply loosening three screws.

Transmitter is a highly efficient type with its parts assembled behind a sturdy, phenol compound shell or case that comprises both mouthpiece and front.

A neat transmitter arm gives a handy vertical adjustment to the transmitter.

Net Weight—7½ lbs.

No. 1157 Wall Telephone

The Stromberg-Carlson No. 1157 Wall Telephone is same as No. 1155 except that it has an opening immediately below the transmitter for mounting a dial when desired. Opening for dial is designed for A. E. Co.'s, W. E. Co.'s and N. E. Co.'s dials.

Net Weight—7½ lbs.

**Booster Circuit
(METALLIC RINGING)
Straight Line**

Code No. Manual	Code No. Dial	Description	Code No. of Ringer	Price Each
1155-BY		1000 Ohms, Straight	46-A	\$12.85
1155-BZY	1157-BZY	1000 Ohms, Biased	49-A	12.85

Standard Harmonic

† 1155-EY	† 1157-EY	16⅔ Cyc., 4th Pty.	47-E	13.40
† 1155-FY	† 1157-FY	33⅓ Cyc., 1st Pty.	47-F	13.40
† 1155-GY	† 1157-GY	50 Cyc., 2nd Pty.	47-G	13.40
† 1155-HY	† 1157-HY	66⅔ Cyc., 3rd Pty.	47-H	13.40
† 1155-NY	† 1157-NY	25 Cyc., 5th Pty.	47-N	13.40

Specially tuned ringers of other frequencies can be furnished.

**Anti-Side-Tone
(PROVISION MADE FOR DIVIDED CIRCUIT RINGING)
Straight Line**

Code No. Manual	Code No. Dial	Description	Code No. of Ringer	Price Each
1155-AB		1000 Ohms, Straight	46-A	12.85
1155-ABZ	1157-ABZ	1000 Ohms, Biased	49-A	12.85

Standard Harmonic

† 1155-AEY	† 1157-AEY	16⅔ Cyc., 4th Pty.	47-E	13.40
† 1155-AFY	† 1157-AFY	33⅓ Cyc., 1st Pty.	47-F	13.40
† 1155-AGY	† 1157-AGY	50 Cyc., 2nd Pty.	47-G	13.40
† 1155-AHY	† 1157-AHY	66⅔ Cyc., 3rd Pty.	47-H	13.40
1155-ANY	1157-ANY	25 Cyc., 5th Pty.	47-N	13.40
1155-AF		2500 Ohms		13.40

(BOOSTER CIRCUIT, PROVISION MADE FOR DIVIDED CIRCUIT RINGING)

Straight Line

1166-BY	1000 Ohms, Straight Line	46-A	\$13.60
1166-BZY	1000 Ohms, Straight Line Biased	49-A	13.60

Standard Harmonic

† 1166-EY	16⅔ Cycles, (Fourth Party)	47-E	14.15
† 1166-FY	33⅓ Cycles, (First Party)	47-F	14.15
† 1166-GY	50 Cycles, (Second Party)	47-G	14.15
† 1166-HY	66⅔ Cycles, (Third Party)	47-H	14.15
1166-NY	25 Cycles, (Fifth Party)	47-N	14.15

†Used with either rotary, multi-cycle ringing machines or converters.

D-2930 Package Assembly—For the conversion of the No. 1155 Wall Telephone or the No. 1157 Wall Telephone into a Handset Type Wall Telephone, the D-2930 Package Assembly has been made up, consisting of the following parts necessary to make the change: 1 No. 16 Handset and Cord, 1 Det. 1 Sk-3277 Hook, 1 D-2929 Blank, 2 P-12910 Screws (Black Enamel Heads), 2 P-588 Nuts, 1 P-25966 Instruction Sheet.

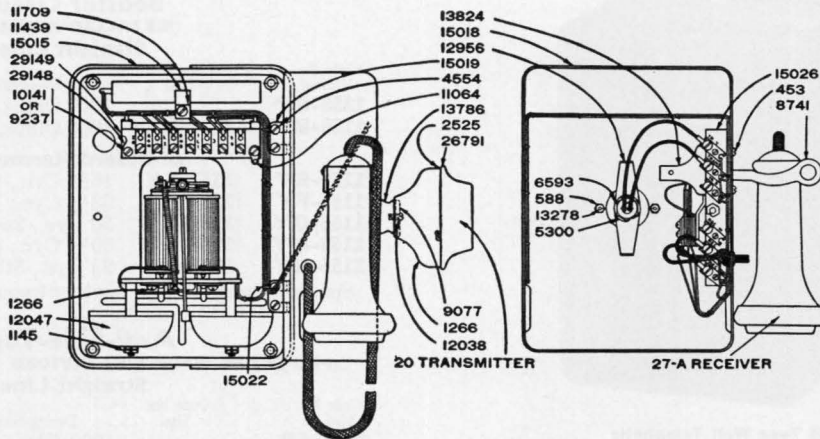
Code No.	Description	Price Each
D-2930	Material for installing handset on No. 1155 or No. 1157 Telephone.	\$8.10



Open View No. 1155 Type Wall Telephone

8-5-40

Nos. 1155 and 1157 Wall Telephones (Cont.)



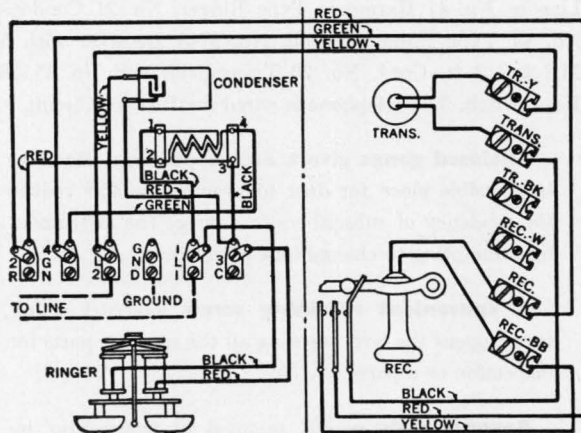
Line Drawing to Show Piece Parts and Their Code Numbers of No. 1155 Wall Telephone

Piece Parts of No. 1155 Wall Telephone

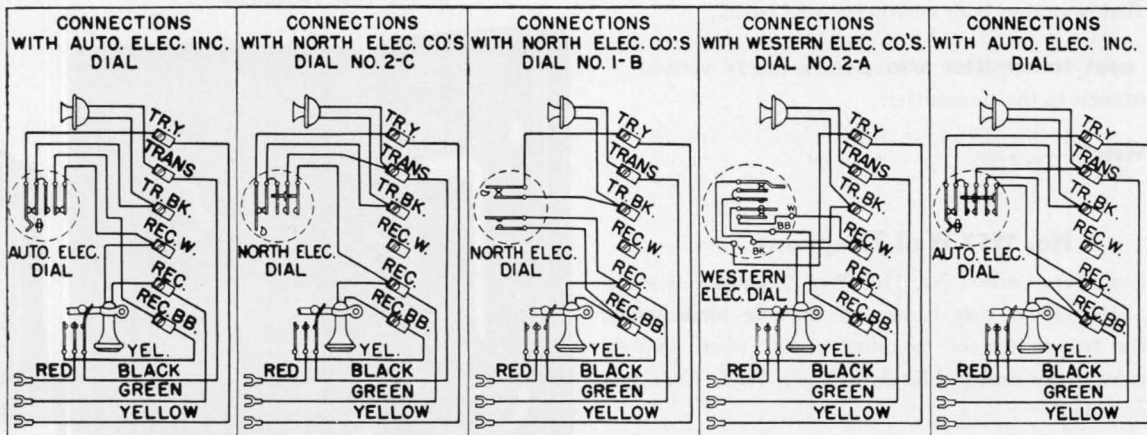
(Use This List, also for Ordering Parts of No. 1157 Wall Telephone and No. 1156 Desk Set Box)

Code No.	Description	Price Each
15015	Base	\$.85
15018	Cover Assembly	1.40
20	Transmitter	*
21	Condenser	*
27A	Receiver and Cord	*
44B	Induction Coil	*
46 or 47	Type Ringer, See Telephone Code	*
8741	Hook	*
12038	Transmitter Back	*
12047	Gong—Brass	*
13824	Hookswitch Assembly	*

*For Prices—See Coded Parts Section.



Wiring Diagram of No. 1155 Type Wall Telephone



Wiring Diagrams Showing No. 1157 Desk Stand Wired to Various Types of Dials

Nos. 1182 and 1208 Desk Stands



No. 1182 Desk Stand

No. 1208 Desk Stand

The Stromberg-Carlson No. 1182 Desk Stand Telephone is thoroughly modern in design and appeals instantly to users. Light weight—rugged—built to stand long life and hard usage—with four outstanding features.

A No. 20 Transmitter—high efficiency—which operates equally well on short lines with large amounts of current available and long lines with small amounts of current.

Fixed Transmitter Arm—This reduces the number of parts and removes the necessity for various adjustments.

Dependable Hookswitch employing sure contact springs with heavy wire terminals for circuit connections and phenol compound insulators gives very reliable service.

All Black Enamel Finish—This greatly improves the appearance and simplifies maintenance with respect to re-finishing. This telephone has no nickel parts to be removed and replated.

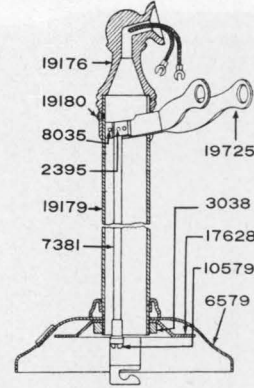
Net Weight—3½ lbs.

Code No.	Description	Price Each
1182	Desk Stand Telephone—Booster Circuit—Equipped with 3 Cond. Duratex Cord. Takes 1156, 1209, 1217, 1218 or other Desk Set Boxes. Equipped with No. 27-A Receiver.	\$8.85
1182-A	Anti-Side-Tone Desk Stand Telephone—Equipped with 4 Cond. Duratex Cord. Takes 1156-A, 1209, 1217, 1218 or other Desk Set Boxes. Equipped with No. 27-A Receiver.	8.95

The No. 1208 Stromberg-Carlson Desk Stand Telephone resembles the No. 1182 in general appearance but its column is off-center to make room for the installation of a dial when desired. Takes same desk set boxes as No. 1182.

Net Weight—3½ lbs.

Code No.	Description	Price Each
1208	Desk Stand Telephone—Booster Circuit—Equipped with 3 Cond. Duratex Cord and with No. 27-A Receiver. Dial opening not covered.	\$8.85
1208-A	Anti-Side-Tone Desk Stand Telephone—Equipped with No. 27-A Receiver. Dial opening not covered.	8.95
1208-M	Same as 1208 except dial opening is blanked.	8.85
1208-MA	Same as 1208 except dial opening is blanked.	8.95

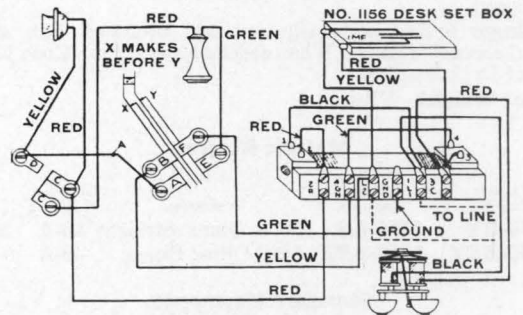


Piece Parts of Nos. 1182 and 1208 Desk Stands

Code No.	Description	Price Each	Code No.	Description	Price Each
3038	Lock Nut	\$.16	17628	Spider	\$.22
6579	Base Assembly	.55	19176	Head	.90
1115	Base Assembly	.40	19725	Hook	.55
MD-3-F	6'6" Cord, 3 Cond. *		MR-2-J	39" Rec. Cord *	
MD-4-F	6'6" Cord, 4 Cond. *		*See Cords, Coded Parts, for prices.		

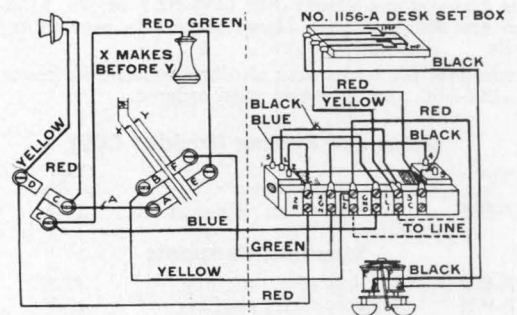
WIRING DIAGRAMS

FOR No. 1182 TELEPHONE, MANUAL TYPE, BOOSTER CIRCUIT



NOTE: FOR SIDE TONE REDUCTION REVERSE RED AND YELLOW CONDUCTORS ON CONNECTING RACK

No. 1182-A TELEPHONE, MANUAL, ANTI-SIDE-TONE CIRCUIT



NOTE: WHEN 1182-A TEL. IS USED WITH 1156 BELL BOX CONNECT RED OF LINE CORD TO L-2 AND YELLOW OF LINE CORD TO 2-R. ALL OTHER CONNECTIONS AS SHOWN BELOW.

4-1-41 Replaces 8-5-40

Desk Set Boxes



No. 1156 Type Desk Set Box

No. 1156 Type Desk Set Box

Case of pressed steel, black enamel finish. Gongs mounted inside leave a neat, sanitary exterior. Equipment consists of No. 46 Straight Line or No. 47 Type Harmonic Ringer, No. 21 Condenser and No. 44-B Induction Coil.

A convenient retaining screw, loosened a few turns, opens the box, exposing all the working parts for inspection or repairs.

Ringer is accurately adjusted and equipped with clear-toned concealed gongs. When ordering specify the Code Number of Desk Set Box.

Net Weight—5 lbs.

Metallic Ringing

Booster Code No.	Anti-Side Tone Code No.	Description	Code No. of Ringer	Price Each
1156-BY	1156-AB	1000 Ohms Straight	46-A	\$6.75
1156-BZY	1156-ABZ	1000 Ohms Biased	49-A	6.75

Standard Harmonic

†1156-EY	†1156-AEY	16 2/3 Cyc., 4th Pty.	47-E	7.30
†1156-FY	†1156-AFY	33 1/3 Cyc., 1st Pty.	47-F	7.30
†1156-GY	†1156-AGY	50 Cyc., 2nd Pty.	47-G	7.30
†1156-HY	†1156-AHY	66 2/3 Cyc., 3rd Pty.	47-H	7.30
1156-NY	1156-ANY	25 Cyc., 5th Pty.	47-Y	7.30
	1156-AF	2500 Ohms Straight	46-F	7.30

For dial systems specify No. 1156-BZY or No. 1156-ABZ which are equipped with biased ringers to prevent tapping of bells.

These desk set boxes may also be furnished in frequencies of 30-42-54-66, and 16 cycles when ordered.

Grounded Ringing (Divided CCT)

Booster Code No.	Description	Code No. of Ringer	Price Each
1167-BY	1000 Ohms, Straight Line	46-A	\$7.50

Standard Harmonic

†1167-EY	16 2/3 Cyc., 4th Pty.	47-E	8.05
†1167-FY	33 1/3 Cyc., 1st Pty.	47-F	8.05
†1167-GY	50 Cyc., 2nd Pty.	47-G	8.05
†1167-HY	66 2/3 Cyc., 3rd Pty.	47-H	8.05
1167-NY	25 Cyc., 5th Pty.	47-N	8.05
1167-ADF	Anti-Side-Tone, straight line 2500 ohms and 50 ohm resistance	46-F	7.95

No. 1158 Type Desk Set Box

This is the same as the No. 1156 Type, except that it has no induction coil. It is designed for use with desk stands or handsets having the induction coil mounted in base of stands. May also be used as an extra extension bell.

Net Weight—4 1/2 lbs.

(LOCAL SECONDARY CIRCUIT—METALLIC RINGING)

Straight Line

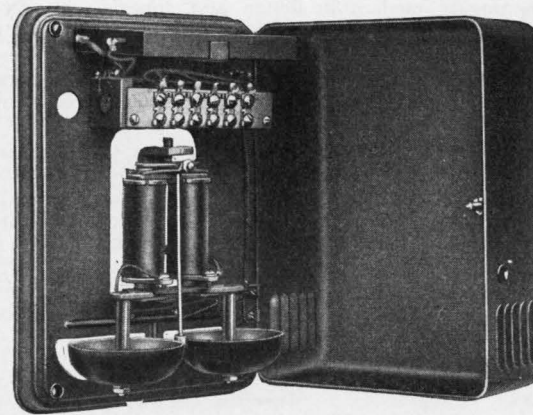
Code No.	Description of Ringer	Code No. of Ringer	Price Each
1158-B	1000 Ohms, Straight	46-A	\$5.75
1158-BZ	1000 Ohms Biased	49-A	5.75

Standard Harmonic

†1158-E	16 2/3 Cycle Harmonic	47-E	6.30
†1158-F	33 1/3 Cycle Harmonic	47-F	6.30
†1158-G	50 Cycle Harmonic	47-G	6.30
†1158-H	66 2/3 Cycle Harmonic	47-H	6.30

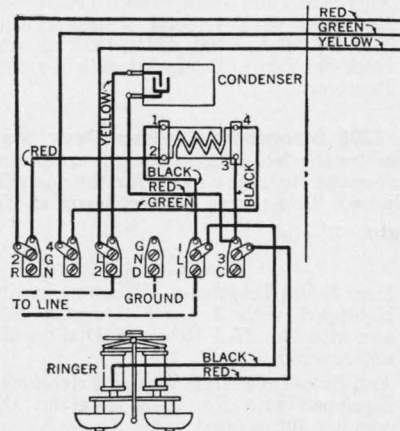
These desk set boxes may also be furnished in frequencies of 30, 42, 54, 66 and 16 cycles when ordered.

†Used with either rotary, multi-cycle ringing machines or converters.



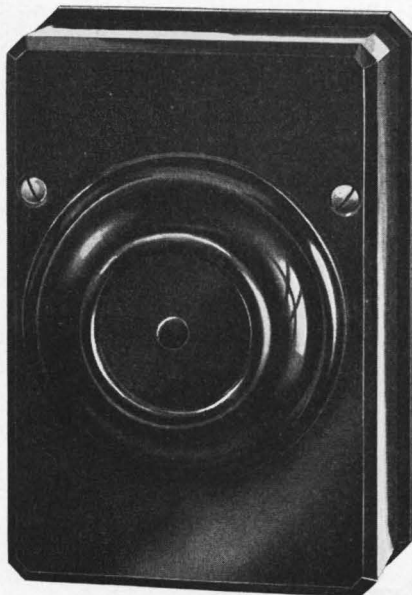
Open View of No. 1156 Type Desk Set Box

The ringers, condensers, terminals, terminal blocks, and their parts are the same as those of the No. 1155 Wall Telephone.



Wiring Diagram of 1156 Desk Set Box and Desk Stand Telephone

No. 1209 Desk Set Box



No. 1209 Desk Set Box

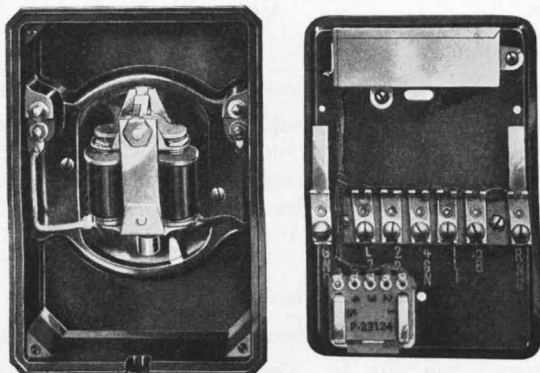
Inconspicuous desk set boxes are appreciated, not only by telephone companies but by the subscriber who has them installed. The No. 1209 Desk Set Box is only 5 1/8 x 4 1/8 x 3 inches in size. When space is at a premium, its compact size makes it a very desirable unit for the telephone installation.

It's Back is formed of sheet steel 0.50" in depth. On this base are mounted a condenser, terminal strip and an induction coil. All are easily accessible.

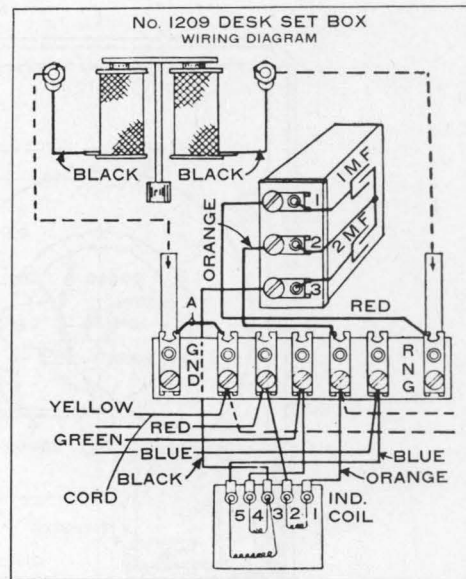
The Box is of moulded, black phenol compound in a simple and attractive design with beveled edges and corners. The box supports a ringer with a single 3 1/4 inch brass gong, black enameled, and is held to the base by two brass lock screws.

The Ringer Connections are made with fingers to the terminal strip through studs making contact with flat springs attached directly to the terminals, thus avoiding a flexible electrical connection between the back of the Desk Set Box and its cover.

The No. 1209 Desk Set Box made with straight line or harmonic ringers, for anti-side-tone. Different ringers to meet different needs should be ordered by Desk Set Box Code Number as follows:



Open Views of 1209 Desk Set Box



(PROVISION MADE FOR DIVIDED CIRCUIT RINGING)

Straight Line			
Code No.	Description of Ringer	Code No. of Ringer	Price Each
1209-B	1450 Ohms, Straight Line	23789	\$6.75
1209-BZ	1450 Ohms, Straight Biased	23792	6.75

Standard Harmonic			
†1209-E	16 2/3 Cycles, Fourth Party	23368	7.30
†1209-F	33 1/3 Cycles, First Party	23365	7.30
†1209-G	50 Cycles, Second Party	23366	7.30
†1209-H	66 2/3 Cycles, Third Party	23367	7.30
1209-N	25 Cycles, Fifth Party	23369	7.30

†Used with either rotary, multi-cycle ringing machines or converters.

Other Harmonic frequencies can be furnished as follows:

(These telephones for converter operation only.)

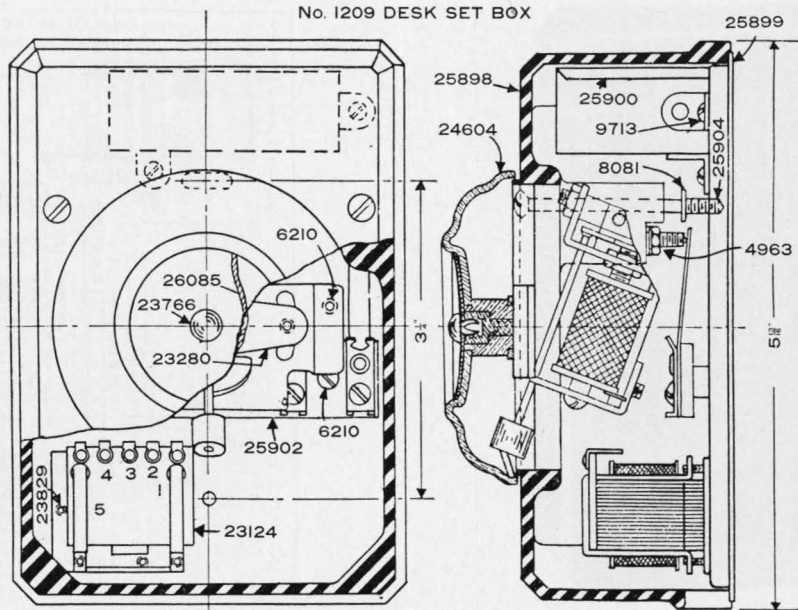
1209-K	30 Cycles, First Party	23370	7.30
1209-L	42 Cycles, Second Party	23371	7.30
1209-M	54 Cycles, Third Party	23372	7.30
1209-P	66 Cycles, Fourth Party	23928	7.30
1209-R	16 Cycles, Fifth Party	SP-23368	7.30



The 1209 Desk Set Box is so small that it may be easily held in the hand

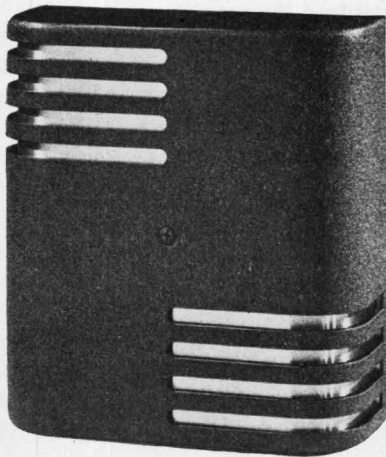
4-1-41 Replaces 8-5-40

No. 1209 Stromberg-Carlson Desk Set Box (Cont.)

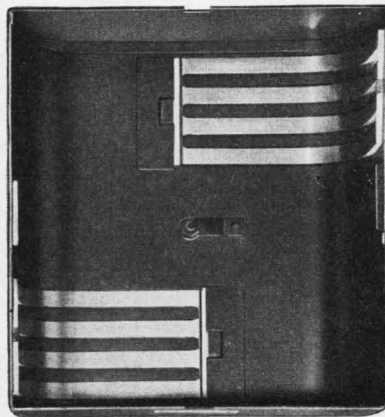


Parts of the No. 1209 Stromberg-Carlson Desk Set Box.

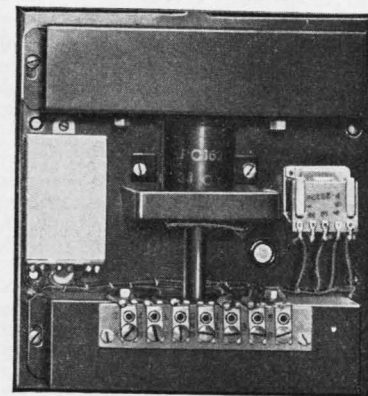
**Chime Bell Boxes (Desk Set Boxes)
(Anti-Side-Tone)**



Exterior



Inside of Cover



Interior—Showing Base

The Stromberg-Carlson Chime Bell Boxes were designed for subscribers who desire a telephone signal having mellow musical tones instead of the insistent ringing of the ordinary telephone bell. They fit in with the general requirements of refinement and good taste. This bell box is 7 1/8" high by 7 1/4" wide, and is finished in black crackle with dull aluminum guards behind open louvers. It may be used with any Stromberg-Carlson anti-side tone telephone which has a separate bell box, and which operates on straight line ringing. Not suitable for harmonic frequencies. Standard bell boxes are equipped with one high and one low tone which alternate—one chime signal when ringing current is impressed, and the other chime signal upon release of the ringing current.

Code No.	Description	Price Each
1217-A	33 1/3 Cycles, with Induction Coil	\$12.50
1218-A	16-20 Cycles, with Induction Coil	12.50
*W-1218-A	16-20 Cycles, with Induction Coil	12.50
1219-A	33 1/3 Cycles, less Induction Coil	11.50
1220-A	16-20 Cycles, less Induction Coil	11.50
28463	Condenser	1.00

Add "B" to code number when two low tones are desired.

Add "C" to code number when two high tones are desired.

*Designed especially for Western Electric, anti-side-tone telephones, with four conductor line cords.

Magneto Telephones—Wall Type



Left Perspective View of No. 896 Telephone

The Stromberg-Carlson No. 896 Magneto Wall Telephone is adapted to any magneto service requirement—long lines, short lines, town lines, or heavily loaded rural lines. Every part of this telephone is built for efficiency, durability and convenience.

The Transmitter is of granular carbon cup type; equipped with phenol compound mouthpiece.

The Receiver is of the bi-polar, long distance, magnetic type; provided with phenol compound ear cap shell.

The Induction Coil is double wound over a laminated soft iron core and is highly efficient on low battery voltage.

The Ringer is built for sensitive operation; provided with clear toned black enamelled gongs and a quick "one screw" adjustment.

The Generator is furnished in powerful 3 and 5 bar types.

The Wiring is of the universal type. This permits the telephone being carried in stock connected for regular bridging service but readily convertible to any of the following five additional kinds of service without either adding or splicing conductors.

"Bridging Service with Sure-Ring Condenser"

"Bridging Service with Non-Interfering Push Button"

"Bridging Service with Silent Ringer"

"Bridging Service with Divided Circuit Ringing"

"Bridging Service with Harmonic Ringing"

A single cable contains all wiring. Every conductor is accessible, readily traceable by means of color code and in plain view. Hinged joints and "back board" groove wiring are entirely eliminated. The conductors all are covered with braided insulation.



Open View of No. 896 Telephone

The Cabinet is built of quarter-sawed dull golden oak, richly finished, easy of access and provided with:—door hinged on the left—writing shelf inclined at a convenient angle—bushed holes for wall mounting screws and a handy screw lock—ample room for 2 or 3 dry cells as required by individual conditions.

The Shipping Weight packed in standard individual packing box less dry cells, is 31 pounds.

Additions

For Sure-Ring Condenser (on 5 bar telephone only) order by adding letter "K" to code number.

For Non-Interfering Push Button add letter "P" to code numbers (on 5 bar telephones and on metallic, two wire, circuits only).

Bridging Type

Code No.	Generator	Ringer	Service	Price Each
896-I	5 bar	1600 Ohms	Rural	\$20.15
896-L	5 bar	2500 Ohms	Heavy rural lines	20.40
896-R	3 bar	1000 Ohms	Town	19.25
"K" added to code indicates Sure-ring Condenser				.65
"P" added to code indicates Non-interfering Push Button				.50

Harmonic Type

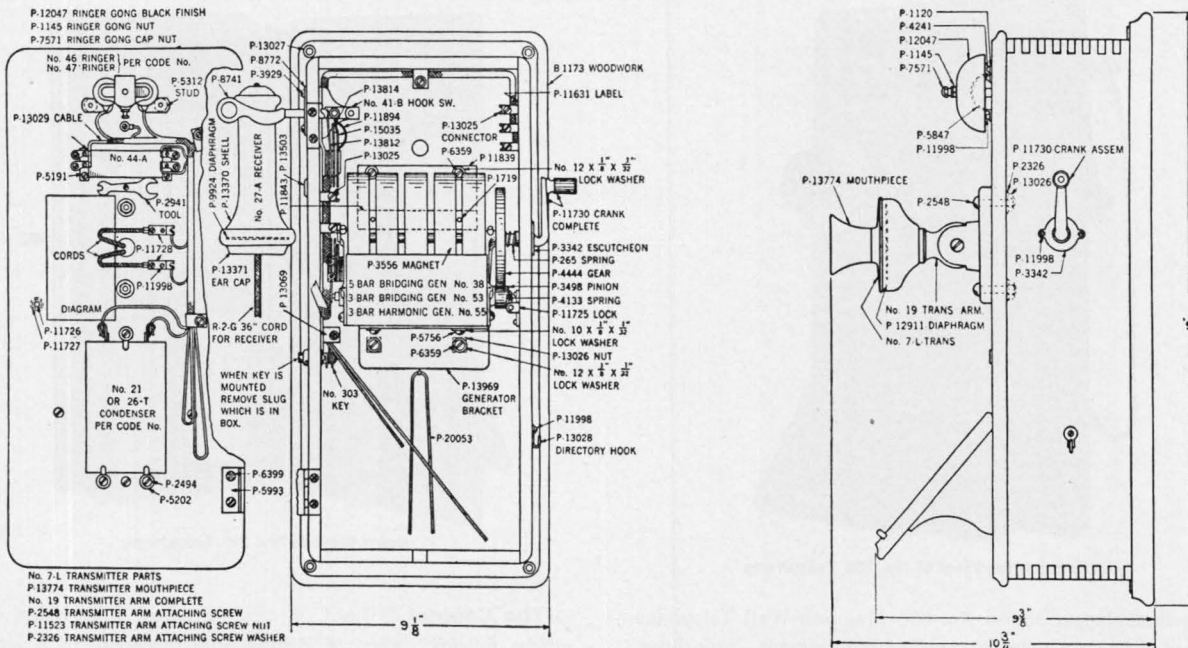
No. 896 Stromberg-Carlson Magneto Wall Telephone equipped with three bar hand generator will be furnished as additions to existing systems only in 16 $\frac{2}{3}$, 33 $\frac{1}{3}$, 50, and 66 $\frac{2}{3}$ cycle frequencies. In seeking quotations and ordering it is necessary to specify frequency.

Batteries

Dry Cells are not included with the telephones as described above but should be ordered separately either, 2 or 3 per telephone as needed. Code: No. 6 Dry Cells.

12-23-40 REPLACES 8-5-40

896 Wall Type Magneto Telephone (Cont.)

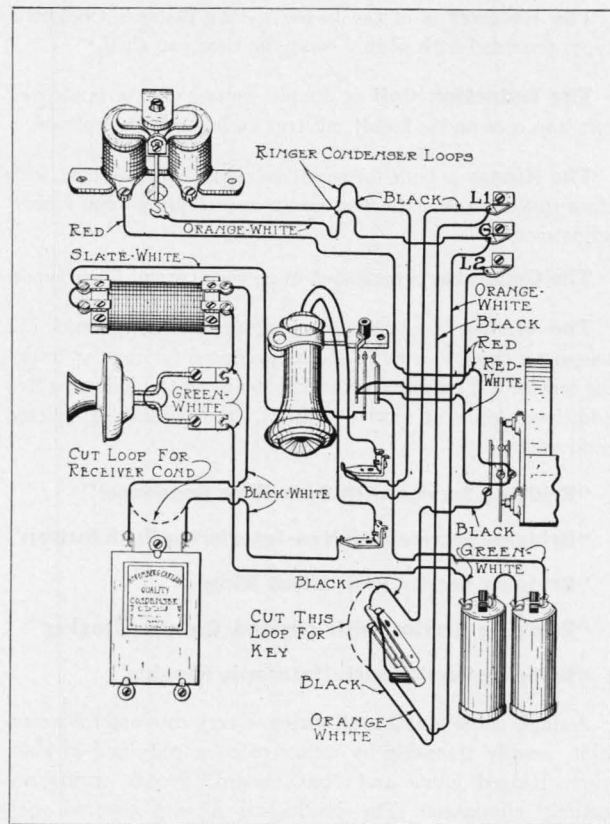


Line Drawings to Show Piece Parts, Their Code Numbers and Dimensions of the 896 Wall Type Magneto Telephone

Piece Parts of the No. 896 Wall Telephone

Code No.	Description	Price Each
2494	Condenser Clip	\$.03
4133	Spring Generator Pinion	.02
5202	Condenser Clip Screw	.005
7571	Gong Cap Nut	.05
7933	Transmitter Less Back and Mouthpiece	2.15
11730	Crank	.25
12047	Gong	.15
12911	Diaphragm	.05
13370	Receiver Shell	.50
13371	Ear Cap	.28
13774	Mouthpiece Front	.15
7-L	Transmitter	*
21	Condenser or	*
26-T	Condenser	*
27-A	Receiver	*
41-B	Hookswitch	*
44-A	Induction Coil	*
46	Ringer	*
R-2-G	36" Duratex Receiver Cord	*

*For Prices—See Coded Parts Section.



Wiring Diagram

No. D-2843 Handset Type Magneto Wall Telephones



The Stromberg-Carlson D-2843 Handset Type Magneto Wall Telephone was designed to give the users of magneto wall telephones all the wonderful convenience and the superior transmitting and reception qualities of the modern, one unit instrument. The Handset is adaptable to any magneto service requirement—long lines, short lines, heavily loaded lines. Its assembly is the standard, No. 896 Magneto Wall Telephone equipped with the new, No. 16 Handset into whose black, phenol compound shell has been built all the receiver and transmitter parts, compactly arranged. The handset is equipped with a 4 ft. cord which is of sufficient length to enable the user to signal the operator and then be seated, nearby, comfortably, while conversing.

Net Shipping Weight without dry cells, 29 lbs.

Additions

For Sure-Ring Condenser (on 5 bar telephones only) order by adding the letter "K" to code number.

For Non-Interfering Push Button (on 5 bar telephones and on metallic two wire circuits only) add the letter "P" to code number.

This telephone may be ordered in bridging type as follows:

Code No.	Generator	Ringer	Service	Price Each
D-2843-I	5 bar	1600 Ohms	Rural	\$23.55
D-2843-L	5 bar	2500 Ohms	Heavily Loaded Lines	23.80
D-2843-R	3 bar	1000 Ohms	Town	22.65

"K" added to code indicates Sure-ring Condenser .65

"P" added to code indicates Non-interfering Push Button .50

Batteries

Dry Cells are not included in price of telephones, and should be ordered separately. 2 or 3 per telephone as needed.

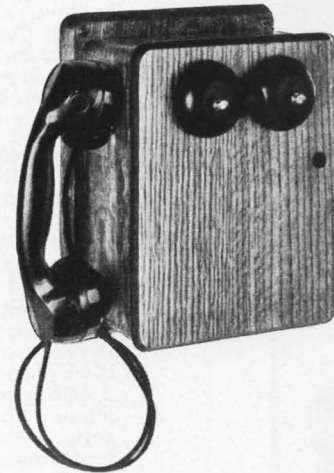
Code No. 6 Dry Cell
Weight, 2 Pounds each

D-2842 Package Assembly

For the convenience of those who may wish to convert the standard No. 896 Magneto Wall Telephones to the handset type, we will furnish our D-2842 Package Assembled which contains one No. 16 Handset with cord, the correct switch hook, piece part to fit the switch hook, and all other parts necessary for the complete change.

Code No.	Description	Price Each
D-2842	Package Assembly	\$8.25

No. D-2844 Handset Type Magneto Wall Telephones



This Stromberg-Carlson Handset Telephone for use with magneto exchanges is designed for mounting on wall or desk. It is a single piece unit with all apparatus mounted in a neat golden oak cabinet. The handset is suspended from a hookswitch at side of cabinet convenient to the user.

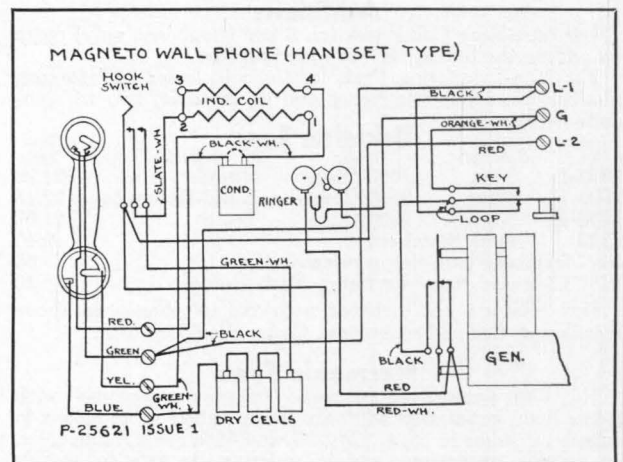
While this telephone does not replace the standard desk type there are many instances where it may be preferred. There is the advantage of not having a telephone on desk or table yet within easy reach. Another advantage of considerable importance is that one may move about without getting too far from the transmitter.

This telephone is composed of the marvelous No. 16 Handset and standard magneto telephone equipment. It will give outstanding performance for either local or long distance service.

Net Shipping Weight without dry cells, 18 lbs.

May be ordered in bridging type as follows:

Code No.	Generator	Ringer	Service	Price Each
D-2844-I	5 bar	1600 Ohms	Rural	\$23.55
D-2844-L	5 bar	2500 Ohms	Heavily Loaded Lines	23.80
D-2844-R	3 bar	1000 Ohms	Town	22.65



Wiring Diagram

10-25-40 REPLACES 8-5-40

No. 1000 Desk Type Magneto Telephones



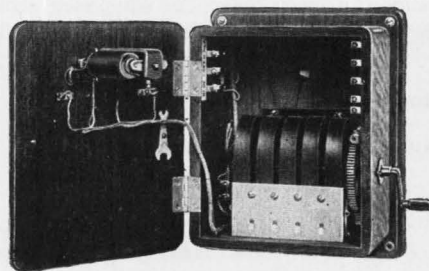
A popular magneto desk telephone for either business or residence service. Consists of the No. 992 desk stand with a 6 ft. Duratex, 3 conductor cord and a No. 327 desk set box.

The desk stand is of rugged all-metal construction; finished in durable dull black enamel and includes the No. 20 transmitter, No. 27-A receiver, and No. 39-A induction coil. The mouth-piece, receiver shell and the ear cap are made of black phenol compound. A quickly removed plate mounts the induction coil, hookswitch and cord terminals as a single unit inside the base of the desk stand and in a readily accessible position.

The desk set box is made of quarter-sawed golden oak, contains the generator, ringer, line terminals and cord terminals. Provision also is made in this desk set box to contain the Sure-Ring Condenser and the Non-Interfering Ringing

Push Button key when these features are ordered.

Shipping weight without dry batteries, 31 pounds



No. 327 Desk Set Box, Open

Additions

For Sure-Ring Condenser (on 5 bar telephones only) order by adding the letter, "K" to code number.

For Non-Interfering Push Button add letter "P" to code number (on 5 bar telephones and on metallic, two wire circuits only).

Code No.	Generator	Ringer	Service	Price Each
1000-I	5 bar	1600 Ohms	Rural	\$21.90
1000-L	5 bar	2500 Ohms	Rural-Heavy Load	22.15
1000-R	3 bar	1000 Ohms	Town	21.00
992	Desk Stand only			9.40
"K" Indicates sure-ring condenser				.65
"P" Indicates Non-interfering Push Button				.50

Dry cells are not included with the telephones as above mentioned. Ordered separately. Code: No. 6 Dry Cell.

Harmonic Type

No. 1000 Desk Type Magneto Telephones equipped with 3 bar hand generators will only be furnished as additions to existing systems in 16 2/3, 33 1/3, 50, and 66 2/3 cycle frequencies. In seeking quotations and in ordering be sure to specify frequency.

Handset Type Magneto Desk Telephones



No. 1197 Handset Telephone

The No. 1197 Handset Telephone is comprised of the No. 15 Handset and a black, phenol compound, cradle stand and operates with a No. 1180 type desk set box. Order No. 1197 Telephone and whatever box (indicated below) is required.

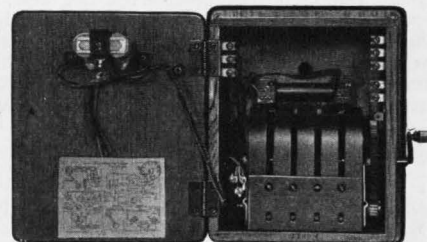
The No. 15 Handset is designed with all exposed parts made from molded, black phenol compound to insure a permanent black finish and to reduce maintenance cost. The No. 15 Handset is provided with metal inserts into which the transmitter and receiver units are threaded. This act connects these units into the circuit, simplifying assembly operation. Terminals are provided under the transmitter unit for attaching the handset cord.

The No. 1180 Type Desk Set Box is a quarter sawed dull golden oak cabinet containing the ringing equipment, the line terminals and the ground terminal. It is furnished with complete wiring diagram for either regular station or extension telephone service.

Dimensions of desk set box, 11 x 9 x 6 inches.

Shipping weight without dry batteries, 24 pounds.

The No. 1207 Handset Telephone is similar to the No. 1197 Handset Telephone, above described, except that it has its induction coil in its base instead of in its bell box—requires the No. 327 box.



No. 1180 Type Desk Set Box

Additions

For Sure-Ring Condenser, order by adding the letter "K" to code number.

For Non-Interfering Push Button add letter "P" to code number for metallic (two wire) circuits only.

Either "K" or "P" may be added to No. 327 boxes, but not both because of the small size of the box.

Bridging Type—Telephones

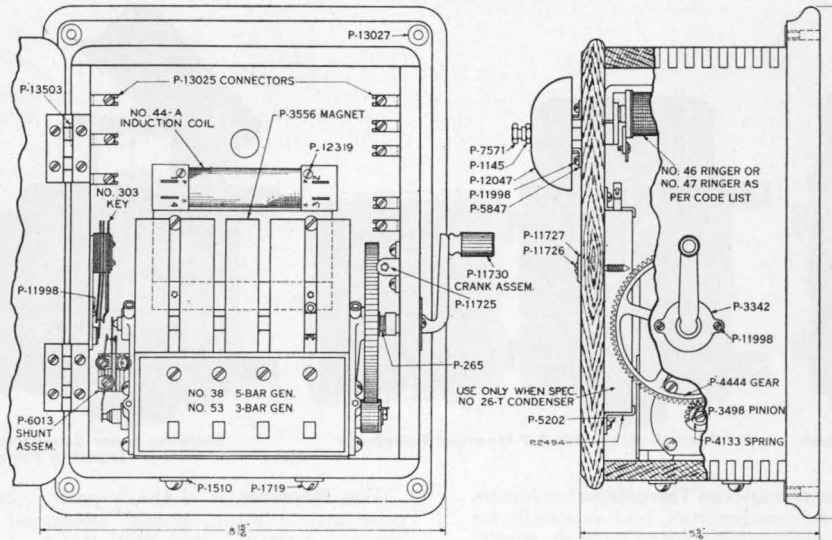
Code No.	Description	Price Each
1197	Handset Telephone, only	\$12.65
1207	Handset Telephone, only— Induction Coil in base	13.60

Desk Set Boxes

Code No.	Generator	Ringer	Service	Price Each
1180-I	5 bar	1600 Ohms	Rural	\$13.45
1180-L	5 bar	2500 Ohms	Heavily Loaded Rural Lines	13.70
1180-R	3 bar	1000 Ohms	Town	12.55
327-I	5 bar	1600 Ohms	Rural	12.50
327-L	5 bar	2500 Ohms	Heavily Loaded Rural Lines	12.75
327-R	3 bar	1000 Ohms	Town	11.60

Dry cells are not included in the price of the telephones but should be ordered separately, Code: No. 6 Dry Cell.

Wall Telephones

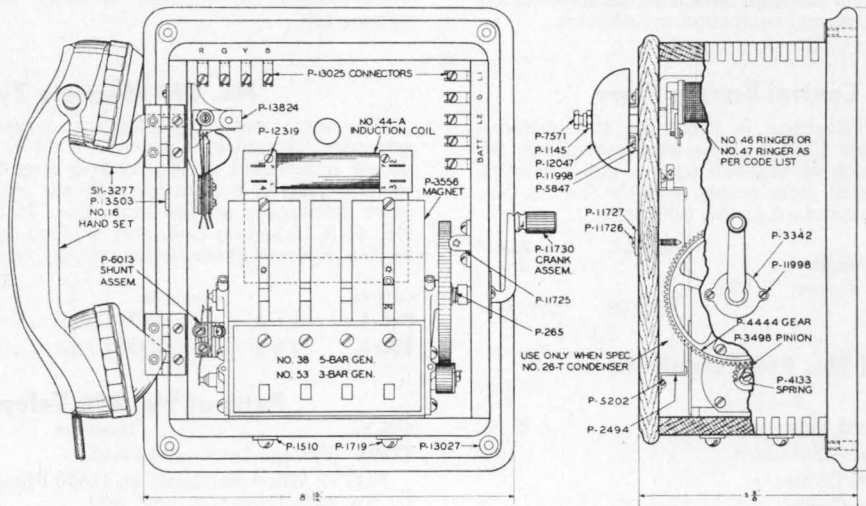


No. 1180 Type Desk Set Box (No. 327—Same Parts, less Induction Coil)

Piece Parts of 327 and 1180 Desk Set Boxes and D-2844 Handset Wall Telephone

Code No.	Description	Price Each	Code No.	Description	Price Each
1145	Nut	\$.01	11730	Crank	\$.25
1510	Iron Washer	.01	12047	Gong	.15
2494	Steel Clip	.03	12319	Screw	.02
3556	Magnet	.50	13025	Connector	.06
3948	Pinion	.11	13824	Hookswitch	1.00
4133	Spring	.02	16	Handset	**
4444	Gear	.85	26-T	Condenser	*
5847	Steel Guard	.03	38 or 53	Generator	*
6013	Shunt Assembly	.50	46 or 47	Ringer	*
7571	Cap Nut	.05	303	Key	*
11725	Lock	.06			

*For prices—See Coded Parts Section.
**and page on No. 15 Handset.



No. D-2844 Handset Telephone

No. 300 Extension Bell For Magneto Service

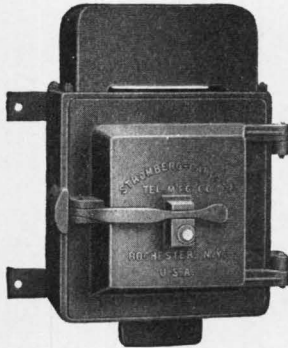
This equipment consists of a standard telephone ringer mounted in a metal box with terminals for connecting wires leading to the main telephone. The equipment is not weather-proof; and is for indoor use, giving a clear loud ring the same as regular telephones. Finished in black enamel.

Code No.	Resistance of Ringers	Price Each
300-D	1000 Ohms	\$4.90
300-E	1600 Ohms	5.25
300-G	2500 Ohms	6.00

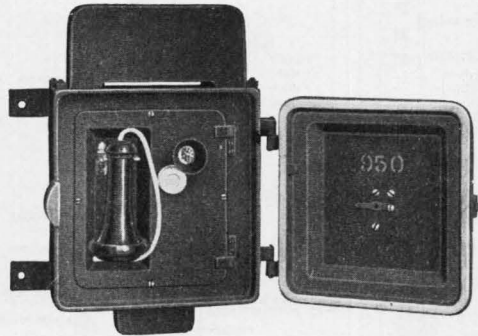
For Biased Ringer add .10 to price of 300-D, 1000 Ohm Bell Box. For Condenser in series with ringer circuit add .65 to the price of each bell box.

4-1-41 Replaces 8-5-40

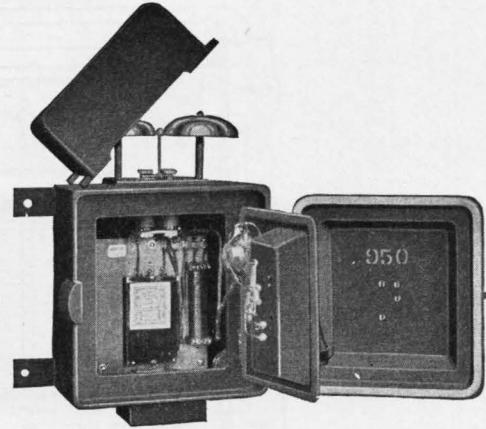
Ironclad Weatherproof Telephones



No. 950 BY Ironclad Telephone



Open View No. 950 BY Ironclad Telephone



Showing Inner Compartment No. 950 BY Ironclad Telephone

The Stromberg-Carlson Ironclad Telephone is moisture proof, concussion proof, and weatherproof, built especially for use out-of-doors or in underground localities which require extra high insulation and dependable service. This telephone is available in Central Energy or Magneto models.

The Case is of heavy cast-iron, provided with outer door, inner door, and gong hood. All parts are heavily coated with rust resisting paint.

When it is desired to keep these telephones locked so that only designated persons may use them, the 11563 Plunger Lock may be replaced with a No. 8468 Key Snap Lock installed at factory.

The Outer Door is equipped with a rubber gasket and compression lever catch, arranged for either key or plunger type lock. Opening the outer door permits the use of the instrument for either signalling or talking.

The Inner Door is hinged for opening during repairs, but is at all other times held securely closed by machine screws and a felt gasket. The inner door mounts the transmitter and receiver.

The Transmitter is of the solid back, long distance carbon cup type with a black, phenol compound mouthpiece.

The Receiver is of the bi-polar, magnetic long distance type with a black, phenol compound ear cap and shell. (Stromberg-Carlson No. 27-B Receiver). An automatic cord take-up device prevents the receiver cord being caught when the outer door is closed, following a conversation.

Ringer is equipped with loud, clear toned gongs concealed beneath the gong hood. The ringer, clapper rod, and armature are operated by magnetic induction through a tight brass plate. This design permits mounting the ringer coils in a protected position behind the inner door, entirely free from fumes and moisture.

The Hookswitch is of pressure, plunger construction, positive in operation and not dependent on gravity.

Terminal Box is mounted on the under side of the telephone, containing two line terminals and a ground terminal, which pass through water-tight bushings to the interior of the telephone so that it is unnecessary to open the instrument when making connections. Entrance hole is threaded for 1/2" conduit.

No. 950 Central Energy Type

The No. 950-BY Telephone is wired for the standard Central Energy Booster Circuit. It is used extensively for out-of-door services such as taxi-cab stands, police booths, subway service, unheated store rooms, and the like. A No. 44-B Induction Coil is standard in this telephone.

Code No.	Description	Price Each 1-4	Price Each 5 and over
950-BY	1000 Ohm Ringer, 1 MF Condenser	\$43.50	\$41.50

Parts of No. 950 Telephone

Code No.	Description	Price Each
9998	Receiver Cord Take-up Reel	\$.82
11563	Plunger Lock—Standard	1.50
35-A	Ringer—1000 Ohms	*
27-B	Receiver and Cord	*
21	Condenser—1 M.F.	*
44-B	Induction Coil	*
7932	Transmitter, less back and mouthpiece	*

NOTE: When standard No. 11563 Plunger Lock is replaced by No. 8468 Snap Key Lock add

8468	Snap Key Lock with two keys	1.75
8534	Additional Key for No. 8468 Lock	.35

*For Prices—See Coded Parts Section.

No. 890 Magneto Type

This instrument is equipped with a powerful five bar hand generator (Stromberg-Carlson No. 62-A). A No. 26-T Condenser is installed in the receiver circuit so that leaving a receiver off the hookswitch will not interfere with ringing other telephones on the same line. It is equipped with a No. 44-A Induction Coil, and is wired for bridged Magneto service. Space is available for two dry cells.

Code No.	Description	Price Each 1-4	Price Each 5 and over
890-I	5 bar 1600 Ohms	\$54.00	\$49.50
890-L	5 bar 2500 Ohms	54.00	49.50

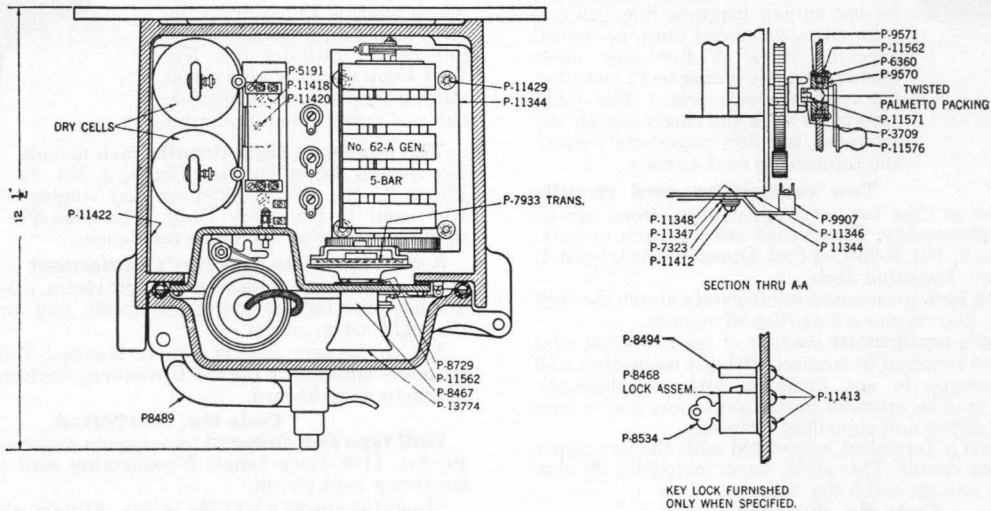
Parts of No. 890 Telephone

Code No.	Description	Price Each
11563	Plunger Lock—Standard	\$1.50
NOTE: When standard No. 11563 Plunger Lock is replaced by No. 8468 Snap Key Lock add		
8468	Snap Key Lock with two keys	1.75
8534	Additional Key for No. 8468 Lock	.35
10818	Hookswitch	.82
8457	Contact Springs	.82
8465	Plunger	.06
652	Terminal 2	.02
1154	Washer 2	.0025
2436	Washer 2	.01
2901	Nut 4	.01
6204	Washer 1	.01
	Rec. Hook and Switch Complete	
	Parts for Receiver Binding Posts	

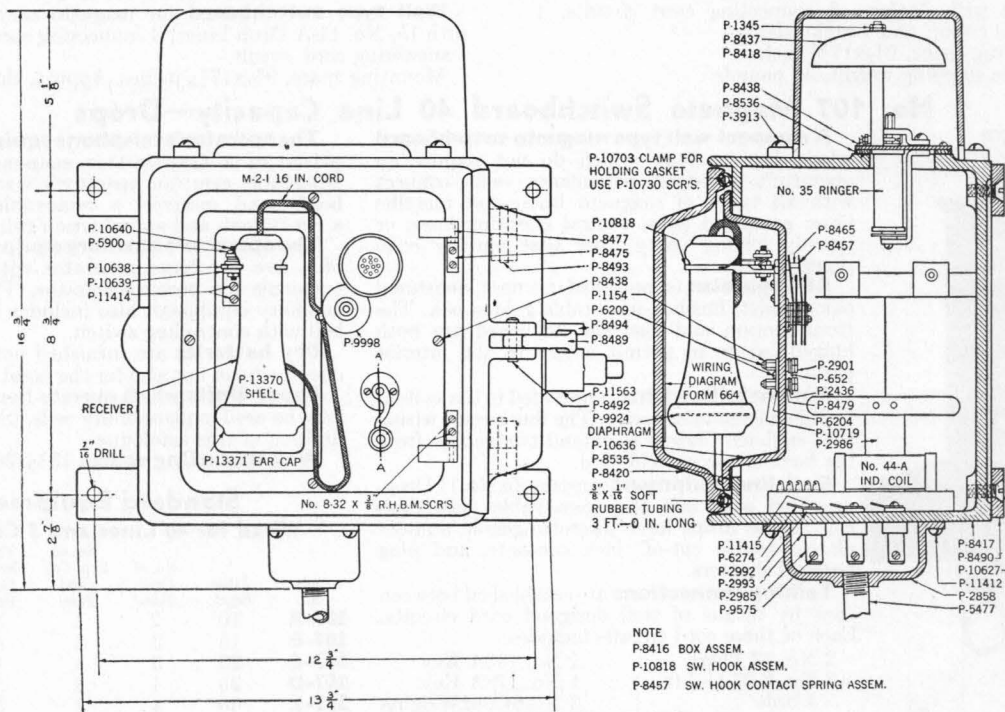
Parts of No. 890 Telephone (Cont.)

Code No.	Description	Price Each	Code No.	Description	Price Each	Code No.	Description	Price Each
6209	Screw 3	\$.01	4133	Generator, Spring Pinion	\$.02	27-B	Receiver and Cord	\$2.75
8479	Bushing 2	.02	4444	Gear, large, for Gen.	.85	M-2-I	16" Duratex Cord	.45
10719	Stud 2	.04	4786	Washer for Shaft, Gen.	.005	9924	Diaphragm	.05
26-T	Condenser	.60	6013	Shunt Springs for End Plate	.50	9998	Reel (Take-up Rec. Cord)	.82
11576	Crank	1.10	11039	Armature for Generator	4.25	13370	Shell, Receiver	.50
11571	Block	.08	11578	Shaft with 11574 Disc Att. for Generator Gear	.61	13371	Ear Cap, Receiver	.28
3709	Screw	.005	11673	Washer for Pinion, Gen.	.02	35-B	1600 Ohm Ringer less Gongs	4.45
62-A	Generator	12.00	11674	Screw for Pinion, Gen.	.03	35-E	2500 Ohm Ringer less Gongs	4.55
245	Pin for Generator Shaft	.05	44-A	Induction Coil	1.00	1345	Nuts for Gongs	.01
246	Clutch for Generator Shaft	.10	8636	Induction Coil in Base	1.55	8437	Gongs for Ringers	.65
265	Spring for Generator Shaft	.02	8489	Handle for Door	.82	12272	Coils (800 Ohms), 35B Ringer	.90
266	Collar, next to Crank, Gen.	.03	7933	Transmitter, less Back and Mouthpiece	2.15	12273	Coils (1250 Ohms), 35E Ringer	.95
278	Collar, next to Plate, Gen.	.06	13774	Mouthpiece, Transmitter	.15			
3497	Stop for Pinion, Gen.	.02						
3498	Pinion, Small Gear, Gen.	.20						
3556	Magnet, Generator	.50						

See "Coded Parts" for Ironclad Generator.



KEY LOCK FURNISHED ONLY WHEN SPECIFIED.



Parts of No. 890 Ironclad Magneto Telephone