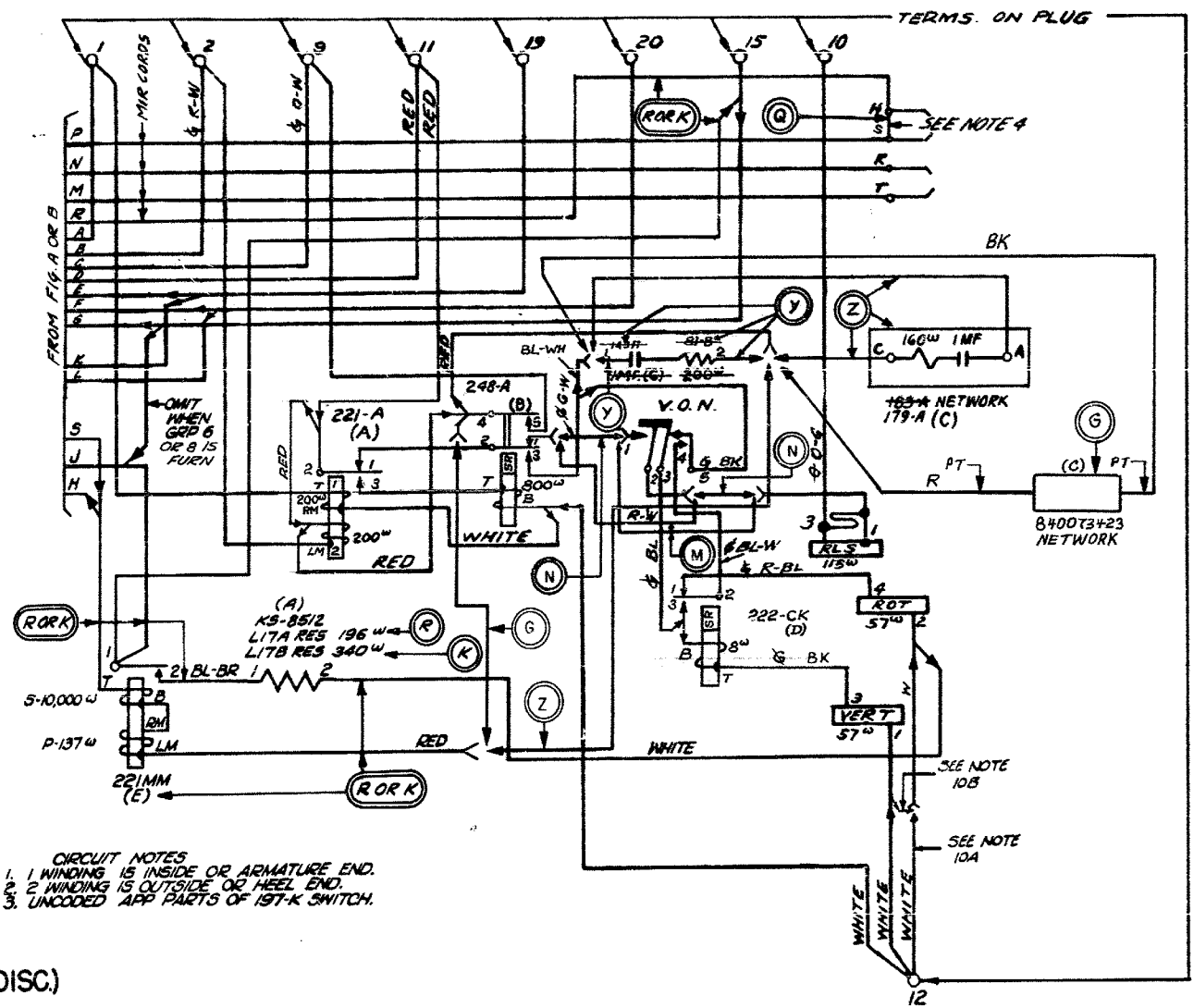


INFORMATION - NOT FOR MFR PURPOSES (CONT)
 62. WHEN MODIFYING A G-5 SWITCH TO ADD G-8, INCLUDE THE FOLLOWING MATERIAL IN ADDITION TO THE STOCK LIST ITEMS FOR G-8:
 1. P-252318 TEST JACK ASSEM (REPLACES 11-TERM WITH 12-TERM ASSEM)
 1. P-252723 BANK WIPER ASSEM (FOR UPPER WIPER REPLACEMENT)

REV	DATE	BY	REASON
1	11-23-38		
2	11-23-38		
3	11-23-38		
4	11-23-38		
5	11-23-38		
6	11-23-38		
7	11-23-38		
8	11-23-38		
9	11-23-38		
10	11-23-38		
11	11-23-38		
12	11-23-38		
13	11-23-38		
14	11-23-38		
15	11-23-38		
16	11-23-38		
17	11-23-38		
18	11-23-38		
19	11-23-38		
20	11-23-38		
21	11-23-38		
22	11-23-38		
23	11-23-38		
24	11-23-38		
25	11-23-38		

FIG. 1 WIRING OF SWITCH



CIRCUIT NOTES
 1. WINDING IS INSIDE OR ARMATURE END.
 2. WINDING IS OUTSIDE OR REEL END.
 3. UNCODED APP PARTS OF 179-K SWITCH.

FIG A (MFR DISC)

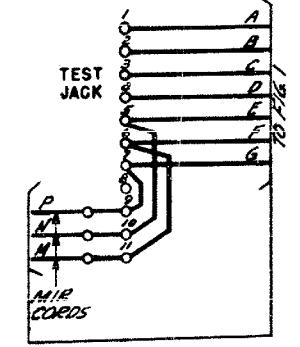
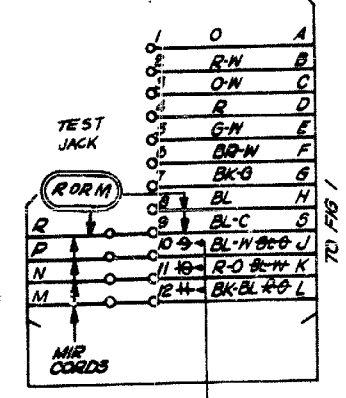


FIG B



LINED OUT TEST JK & WIPER CORD BLOCK TERMS INDICATE CONNECTIONS PRIOR TO USE OF 12-TERM TEST JK ASSEMBLY (P-252318) 4TH MIR CORD.

INFORMATION - NOT FOR MANUFACTURING PURPOSES

- THIS DRAWING ISS 25 28 18 16 17 19 20 22E 23
- SD-30243-01 15S 22 22 17 MOD 18 19 20 21
- ED-30243-02 15S 20 20 12 12 MOD 14 15 16 18 19
- U 38311 (RSP 814-435-150)
- CONN DWG: J-382076 T-382511 JACK WIRING BANK WIRING T-32128 -H, -14
- SEE TABLE A FOR APPLICATION OF GROUPS.
- THIS DWG. DIFFERS FROM ED-30243-32 IN THAT IT SPECIFIES THE NEW CODE (B) RELAY.
- (A) JOBS MFR BEFORE 9-1-42 FURNISHED WITH 4 WRG & APP. (B) JOBS MFR AFTER 9-1-42 FURNISHED WITH 2 WRG & APP. (C) JOBS MFR BETWEEN 9-1-41 & 9-1-42 FURNISHED WITH 1 OR 2 WRG & APP.
- FIG A SHOWS WIRING PREVIOUS TO ISSUE B. SPECIFY FIG B WHEN ORDERING ISSUE TO BE LATER OF THIS DWG.
- SPECIFY GROUP A ON ALL JOBS USING ISSUE 25 OR LATER.
- WHEN PREPARING INFORMATION TO CONVERT ED-30243-33 GRP 5 TO GRP 5+6 INCLUDE THE FOLLOWING INFORMATION - ON SWS MADE FROM DWG ISSUES PRIOR TO 15-1 SPECIFY ONE P-252318 TEST JK & WIPER CORD BLOCK PER SWITCH TO REPLACE P-250374. DO NOT MODIFY FROM G5 TO G7.
- SPECIFY Q WRG WHEN SWITCH IS USED ON SHELVES EQPD WITH 300 PT. BANKS.
- 49A BRKT INTRODUCED IN MFR APPROX 6-9-59 (CONTINUED AT UPPER RIGHT)

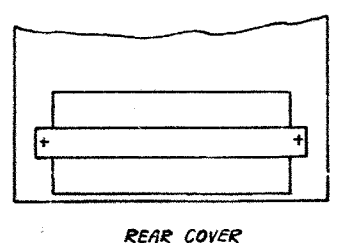
TABLE S WIRING DIAGRAM-SCHEMATIC CROSS REFERENCE TABLE

FIG	WRG	APP	FIG	WRG	APP	IF OFF RECORDS DO NOT SPEC WD OPTION	THIS OPTION IS FURNISHED	REMARKS
ED-30243-33			SD-30243-01					
(1)	Q	R	(1)	Q	R		Q OR NONE	BEFORE 9-1-41
(1)	(1)	Y	(1)	Y	Y		Y OR NONE	AFTER 6-1-42
(1)	(1)	Y OR Z	(1)	Y OR Z	Y OR Z		Y OR NONE	9-1-41 TO 6-1-42
(1)	M	N	(1)	M	N		M	
(1)	(1)		(1)	(1)				BEFORE 9-21-41
(1)	(1)		(1)	(1)				AFTER 9-21-41
(1)	K	K	(1)	(K)	K		Q OR NONE	
(1)	(2)	Z	(1)	Z	Z		Z	
(1)	(1)	G	(1)	G	G		G	

MANUFACTURING NOTES

- WIRES NOT OTHERWISE SPEC'D. TO BE 24G 240W
- DESIGNS ON TERMS. OF APP. ARE FOR WIRING INFORMATION ONLY.
- LEADS NOT OTHERWISE COLORED TO BE GREEN.
- WHEN SWITCH IS TO BE USED WITH A 200 POINT UPPER BANK USE AN UPPER WIPER ADJUSTED TO OPERATE AS A 2 CONDUCTOR WIPER AND REMOVE 'Q' WRG.
- FOR METHOD OF DRESSING AND ATTACHING MIR CORDS USE ED-30278-01.
- FOR WIRING RECORD SEE SWED-30243-33
- THE GRP NO. OF MFR DWG ED-30243-33 FOR WHICH THE SWITCH IS ORDERED SHALL BE STAMPED ON THE APP MTG PLT.
- NO LEADS ON THIS DWG. ARE TO BE RUN BY THE INSTALLER.
- WHEN LOCAL CABLES ARE USED FOR WIRES PASSING THRU MOUNTING PLATES ASSOCIATED LOCAL CABLES ARE LC-724-025-01 & 62.
- (A) WIRING USED WITH TYPE G WIRE. (B) WIRING USED WITH TYPE B6 WIRE. (C) WIRING COLORED WHICH REPLACE LINED OUT COLORS ARE FOR B6 TYPE WIRE ONLY. (D) PARTS NOT DESIGNATED ARE TO BE ASSEMBLED FOR SHIPMENT.
- PT LEADS FURNISHED WITH COMPONENT.

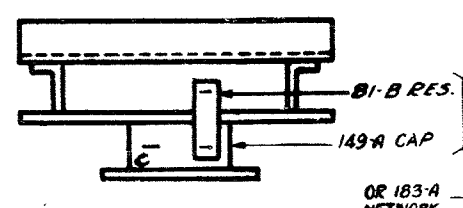
NOTICE
 NOT FOR USE OR DISCLOSURE OUTSIDE THE BELL SYSTEM EXCEPT UNDER WRITTEN AGREEMENT



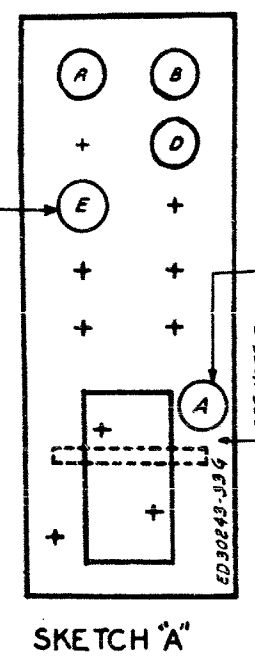
SK. E (MFR DISC)



SKETCH "C" (MFR DISC)



SKETCH "B" (MFR DISC)



SKETCH "A"

TABLE R RECORD OF FIGURE, APPARATUS & WIRING CHANGES

CHANGED	IF JOB RECORDS DO NOT SPECIFY	THIS OPTION IS FURNISHED	SEE ENG	USE IN CKT
ISSUE				STD A & B M D
6D	Z WRG & APP	Y WRG & APP	55, 57	Z
8B (PUT)	FIG. B	FIG. A OR B	56	B
148 (PUT)	R WRG & APP.	Q WRG OR NONE		R, Q
17DD	M WRG	N WRG		M
20	"K" OPTION	"Q" OR "R"		K, Q, R
22	"K" OPTION	"Q" OR "R"		K, Q, R
25	G OR Z	Z	57	G

ITEM	NAME OF CIRCUIT	SCHEMATIC	CIRCUIT	CONDITIONAL	WIRING APP.	WIRING EQPD.	REMARKS
8	TEST CONNECTOR	SD-30243-01	ED-30243-33	(1)	OMIT		WA
7	TEST CONNECTOR	SD-30243-01	ED-30243-33	(1)	OMIT		G-A
6							
5							
4	TEST CONNECTOR	SD-30243-01	ED-30243-33		OMIT	K	G-B
3	TEST CONNECTOR	SD-30243-01	ED-30243-33	1/8	M, L, Z	Z	G-7
2	TEST CONNECTOR	SD-30243-01	ED-30243-33		OMIT	R	G-6
1	TEST CONNECTOR	SD-30243-01	ED-30243-33	1/2	Z, Q	Z	G-5

SURFACE WIRING PROVIDED

ITEM	DESCRIPTION	QTY	REMARKS
1	840073423 NETWORK		
2	15-8512 LITZ 350 OHM RES TERM FIG 2 IN POS B SKD		
3	P470448 CENTERING WASHER IN POS 13		
4	P220183 WASHER IN POS 13		
5	P251741 WASH SOLEN .135-32 X 2 1/2 IN POS 13		
6	K5-8512 LITZ 350 OHM RES TERM FIG 2 IN POS B SKD		
7	OMIT 49A BRACKET		
8	197-H MTG PLT EQUIP WITH		
9	149-A 49A COVER BRKT		
10	149-A 179-A NETWORK		
11	987-B WFR. PLT. EQUIP WITH		
12	91-B RES.		
13	149-A COND.		
14	OMIT 179A NETWORK		
15	221-A REL IN POS 1		
16	248-A REL IN POS 2		
17	221-MH REL IN POS 3		
18	222-QK REL. IN POS. 4		
19	197-K SW IN POS 12 EQ WITH		
20	MIR CORD 4" LONG (UPPER)		
21	MIR CORDS 4 3/4" LONG (LOWER)		
22	242-B PLUG IN POS. 14		

NOTE 58 RATED MFR DISC. 9-2-77 CL D
 NOTE 62 ADDED. 11-19-79 CL D
 NOTE 51 UPDATED. 1-22-80 CL D
 NOTE 23 ADDED. 11-19-79 CL D
 IN TITLE 35E7 ADDED DWG WAS RATED STD. 1-16-64 CL DD
 IN SK A (E) RELAY. "GRP 6 OR 8 ONLY" READ "GRP 6 ONLY". 2-8-70 CL DD
 IN FIG 1 "840073423 NETWORK" NET. "A" OPT ADDED. SK E WAS RATED STD. IN TBL A "G-A" ADDED TO G-7. TBL R REF TO "G" OPT ADDED. "Z" OPT RATED MFR DISC. IN "SURFACE WIRING PROVIDED" TBL ITEM 7 ADDED IN WRG DIAGRAM CROSS-REF TBL REF TO "G" OPT ADDED. "Z" OPT RATED MFR DISC. IN SL "G-A" LINE 11 "OMIT 179A NET; LINE 18 "OMIT 49A BRACKET; LINE 24 "840073423 NET. ADDED. NOTE 57. "SPECIFY GROUP A ON ALL JOBS USING ISSUE 25 OR LATER." ADDED. 12-5-72 CL DD
 IN TBL S. "Z" OPT. REMARKS COL "MFR DISC" RMV. "G" OPT. RMV REF TO "G" WRG FOR ED-1 SD-2-27-73 CL DD
 (CONT. AT LEFT)

ED-30243-33

4099

STEP BY STEP SYSTEMS NO. 1, 350A, 355A OR 35E97 TEST CONNECTOR EQUIPMENT AND WIRING SURFACE WIRED.

WESTERN ELECTRIC COMPANY, INC.

ISSUE 29

STANDARD A & B ONLY FOR 350A & 35E97

ED-30243-33

PRINTED IN U.S.A.