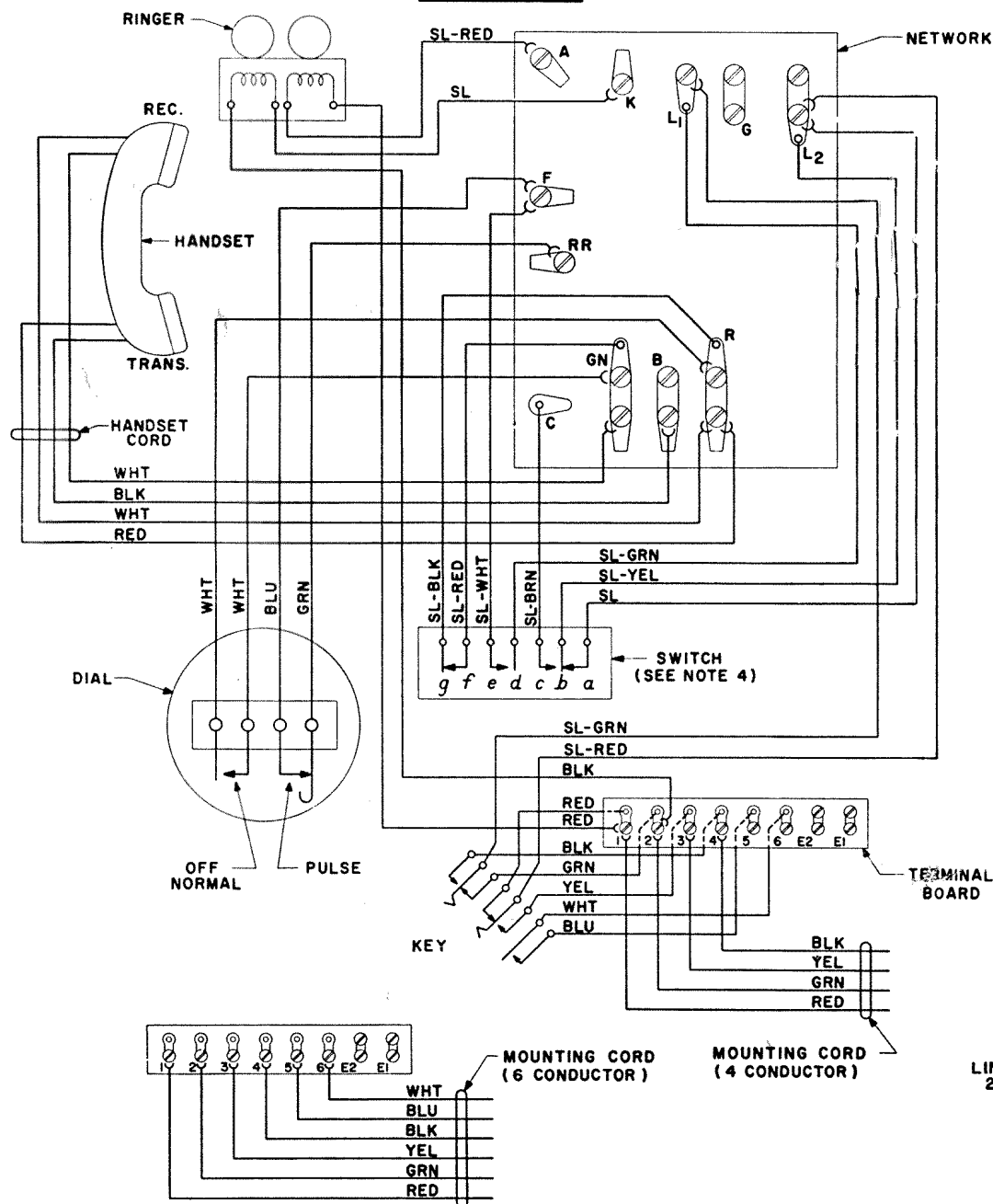


K-510 TYPE TELEPHONE CIRCUIT

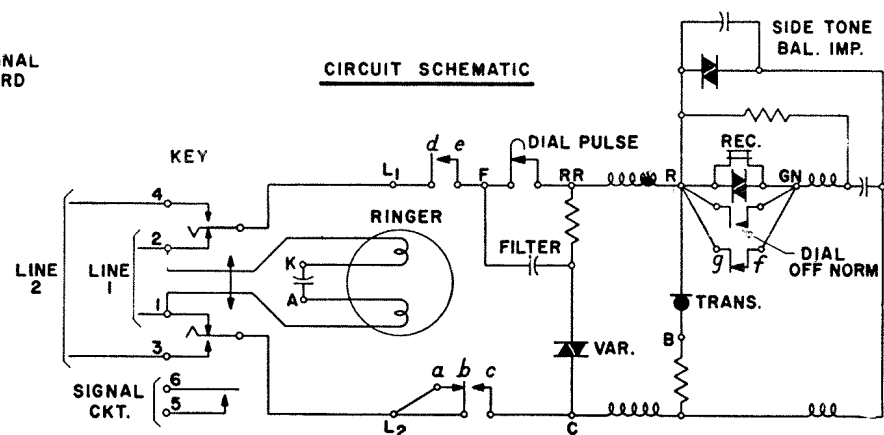
WIRING DIAGRAM

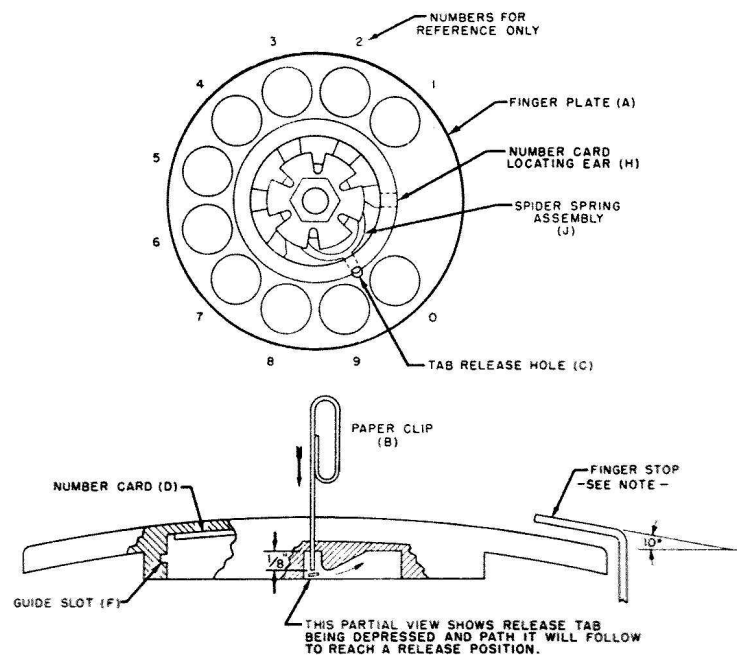


NOTES:

- 1-FOR MANUAL SERVICE:
REPLACE DIAL WITH DUMMY PLUG ASSEMBLY AND TRANSFER SLATE-WHITE SWITCH LEAD TO (RR) TERMINAL ON NETWORK.
- 2-TO PERMANENTLY SILENCE RINGER:
TRANSFER BLACK RINGER LEAD TO (K) TERMINAL ON NETWORK.
- 3-RINGER CUT-OFF CONTROL BY CUSTOMER:
BEND STOP NEXT TO DETENT ON RINGER VOLUME CONTROL SO THAT IT COMPLETELY CLEARS THE RIM OF THE RINGER FRAME. THIS PROVIDES A FURTHER POSITION ON VOLUME CONTROL WHICH PREVENTS ARMATURE MOVEMENT.
- 4-WHEN THE HANDSET IS REMOVED FROM CRADLE CONTACT *gf* BREAKS LAST.

CIRCUIT SCHEMATIC





NUMBER CARD ASSEMBLY INSTRUCTIONS

A. REMOVAL OF FINGER PLATE

REVOLVE THE FINGER PLATE (A) IN A CLOCKWISE DIRECTION AS FAR AS IT WILL GO. THEN INSERT ONE END OF AN OPENED PAPER CLIP (B) INTO THE TAB RELEASE HOLE (C) AND DEPRESS THE TAB APPROXIMATELY $\frac{1}{8}$ " WITH THE LOCKING TAB DEPRESSED, CONTINUE TO TURN THE FINGER PLATE IN A CLOCKWISE DIRECTION UNTIL A SECOND STOP IS REACHED. REMOVE THE PAPER CLIP (B) AND LIFT THE FINGER PLATE FROM THE DIAL.

B. REMOVAL OF NUMBER CARD

TO REMOVE THE NUMBER CARD, THE FINGER PLATE MUST FIRST BE REMOVED AS OUTLINED UNDER "A". THEN TURN THE FINGER PLATE ASSEMBLY OVER, AND REMOVE CARD.

C. ASSEMBLY OF NUMBER CARD

PLACE THE NUMBER CARD (D) IN THE FINGER PLATE (A). NOTE THAT THE NOTCH OF CARD FITS INTO A LOCATING EAR (H) OF THE FINGER PLATE.

D. ASSEMBLY OF FINGER PLATE

PLACE THE FINGER PLATE (A) SQUARELY OVER THE SPIDER SPRING ASSEMBLY (J) ON THE DIAL WITH THE NO. 10 HOLE OF THE FINGER PLATE (A) DIRECTLY OVER THE CENTER OF THE NO. 9 DOT ON THE NUMERAL RING. TURN THE FINGER PLATE (A) FIRMLY IN A COUNTER-CLOCKWISE DIRECTION UNTIL THE FINGER PLATE (A) LOCKS IN PLACE.

NOTE: WHEN REPLACING FLAT FINGER PLATE WITH CURVED TOP FINGER PLATE, BEND FINGER STOP APPROXIMATELY 10° AS SHOWN, OR REPLACE WITH BENT UP FINGER STOP.

WARRANTY

Subject to the provisions of this paragraph, **ITT Telecommunications** warrants for a period of one year (except that as to transistors and vacuum tubes such warranty shall be limited to 90 days) from the date of shipment of the equipment, that at the time of such shipment, the equipment will be free from defects in material or workmanship and will conform to applicable specifications; provided, however, that if the equipment is to be installed and/or tested hereunder, commencement of this warranty shall be from the time of installation and/or testing of the equipment. If any defects covered by this warranty appear within the one year period as aforesaid (or as to transistors and vacuum tubes within the 90 day period as aforesaid) **ITT Telecommunications** shall have the option of repairing the equipment in place of accepting the return of the equipment for repair or replacement, and all expenses incident to such repair or to such return and repair or replacement shall be borne by **ITT Telecommunications**. This warranty does not extend to any equipment which has been; (a) subjected to misuse, neglect, accident or abuse, (b) wired, repaired or altered by anyone other than **ITT Telecommunications** express and prior approval, (c) improperly installed by someone other than **ITT Telecommunications**, its sub-contractors or affiliates, (d) used in violation of instructions furnished by **ITT Telecommunications**. Equipment manufactured or supplied by others, sold by **ITT Telecommunications** hereunder, and not incorporated in the equipment manufactured and sold by **ITT Telecommunications** hereunder, shall bear only the warranty given **ITT Telecommunications** by the manufacturer or supplier of that equipment, such warranties given **ITT Telecommunications** shall be transferred and assigned to the Purchaser on completion of the work and upon final payment to **ITT Telecommunications** hereunder. If this contract covers the manufacture of equipment which is made to the purchaser's specifications, this warranty shall be limited to cover defects in material and workmanship only, and in no case shall be construed as warranty that such equipment shall prove satisfactory in operation, or in type or length of service rendered. Evidence that the purchaser's specifications have been complied with shall be conclusive that **ITT Telecommunications** warranty obligations hereunder have been met. **ITT Telecommunications** shall not be liable for any special or consequential damages or for loss, damage or expense directly or indirectly arising from use of the equipment sold hereunder or arising from the purchaser's inability to use the equipment either separately or in combination with any other equipment or from any other cause. **ITT Telecommunications** obligation to repair or replace equipment in accordance with this paragraph is in lieu of and excludes all other warranties or warranty obligations, express or implied.