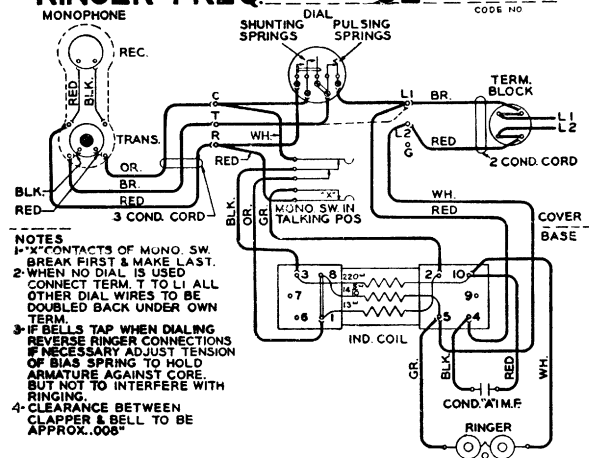


FORM D-53548 ISSUE-2

RINGER FREQ.

SL~



- NOTES
- 1- "X" CONTACTS OF MONO. SW. BREAK FIRST & MAKE LAST.
 - 2- WHEN NO DIAL IS USED CONNECT TERM. T TO L1 ALL OTHER DIAL WIRES TO BE DOUBLED BACK UNDER OWN TERM.
 - 3- IF BELLS TAP WHEN DIALING REVERSE RINGER CONNECTIONS IF NECESSARY ADJUST TENSION OF BIAS SPRING TO HOLD ARMATURE AGAINST CORE. BUT NOT TO INTERFERE WITH RINGING.
 - 4- CLEARANCE BETWEEN CLAPPER & BELL TO BE APPROX. .008"

AUTOMATIC ELECTRIC COMPANY
CHICAGO, U. S. A.