

**Specification List A 107**

# **M a g n e t o T e l e p h o n e s**

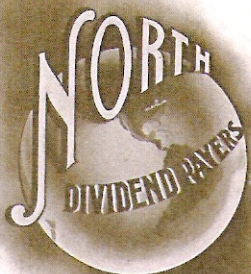


***The North Electric Co.***  
**Cleveland, Ohio, U S A**

SPECIFICATION LIST A 107

---

MAGNETO  
CALL TELEPHONES



THE NORTH ELECTRIC CO.

CLEVELAND, OHIO.

U. S. A.



**T**HE following pages show only a very small part of the telephone apparatus we manufacture and is intended as a classification list only. To those interested in Switchboards of any size, large or small, we will cheerfully mail our printed matter covering that class of our product.

All apparatus shown is manufactured by us from the raw material in our own factory, so that we can guarantee all our work to be of the very highest grade, well finished and free from defects. Our line of apparatus includes telephones for farmers line use, telephones for small exchanges, telephones for large exchanges using common battery, lamp signal switchboards. Our line of switchboards is very complete, including the following: small boards for farmers lines or factory uses; unit type switchboards in units of one hundred and two hundred lines, for either magneto call or common battery call. These we recommend for small and medium size exchanges. We also manufacture and install full common Battery (or Central Energy) multiple switchboards, completely equipped with power plant, protective apparatus, distributing boards, etc., of any size. These boards are furnished with either magneto drops, lamp signals or target signals. Full information will be forwarded upon request.

The well known reputation of The North Electric Co. for financial responsibility and fair dealing is sufficient assurance that any apparatus purchased from us will be of the very highest grade and will satisfactorily perform the service for which it is recommended.

#### **In Ordering Indicate 'Phones Desired by both Numbers and Letters.**

As to classification, the letters "A" and "K" apply to the type of cabinet in the wall 'phone or to the outward appearance of the 'phone only, having no reference to the ringers, generators, transmitters, etc., with which the telephone is equipped.

The numbers "6," "20," "116," "120," "216," and "220" refer to the type of magneto or to the generator and ringer.

The transmitters and receivers are identical whether furnished with series or bridging telephones.

Under ordinary conditions the following estimates as to the number of telephones, which can be used on one line, will be found well within the limits insuring reliable and satisfactory service.

### FOR EXCHANGE SERVICE.

The No. 6 is a series telephone with 80 ohm ringer. For exchange service it can be used in connection with series clearing-out drops, or can be used on series party lines where not to exceed twelve telephones are used on a line.

### FOR BRIDGING LINES.

No. 20 is a bridging telephone with 1000 ohm ringer and three bar generator. Can be used on bridged party lines where not to exceed six telephones are used on one line.

No. 116 is a bridging telephone with 1600 ohm ringer and is equipped with heavy and powerful four bar generator. Can be used on bridged party lines where not to exceed 20 telephones are used on a line.

No. 120 is a bridging telephone with 1000 ohm ringer and is equipped with heavy and powerful four bar generator. Can be used on bridged party lines where not to exceed 15 telephones are used on one line.

No. 216 is a bridging telephone with 1600 ohm ringer and is equipped with extra heavy and very powerful five bar generator. Can be used on bridged party lines where not to exceed 40 telephones are used on one line.

No. 220 is a bridging telephone with 1000 ohm ringer and is equipped with extra heavy and very powerful five bar generator. Can be used on bridged party lines where not to exceed 30 telephones are used on one line.

### MAGNETOS.

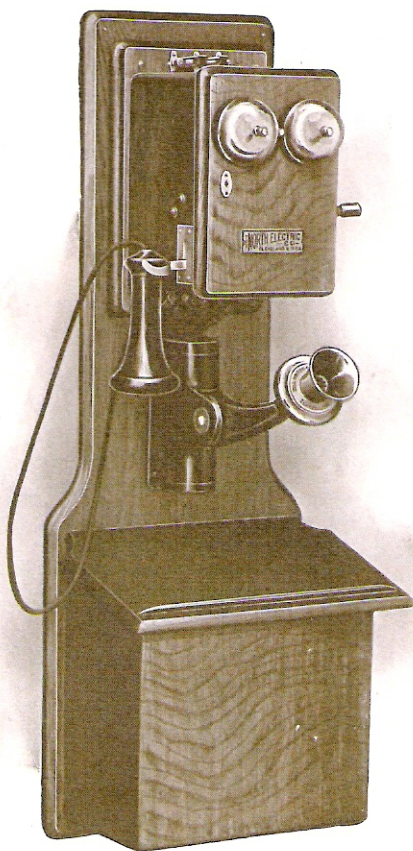
Magnetos take same numbers as telephones (see description) or rather the 'phone takes its number from the magneto with which it is equipped. Special magnetos are furnished to meet exceptional requirements.

### IMPORTANT.

It will, of course, be understood that the length of the line has some influence on the number of telephones which can be used on same. The classification as outlined above is that applying to average conditions in this respect, and if the line upon which telephones are to be used is an extremely long one, or if the conditions are exceptional, these facts should be taken into consideration in making a selection of telephones.

*In telephones used on any one line the ringers should be of uniform resistance.*





Type A

All **type A** telephones have the same style of cabinet and may be furnished in either Oak or Walnut. The number preceding the letter indicates the resistance of the ringer and the size of generator.

On the following page is a list, which shows the various kinds of **type A** telephones manufactured, with the price of each.

**Type 6 A** is equipped with a series, 80 ohm ringer; three bar generator; No. 5 transmitter; No. 3 double pole, adjustable receiver with hard rubber shell. Length 33 inches; width 11 1/2 inches. Weight boxed—two telephones—90 pounds.

**Type 20 A** is equipped with a bridging 1000 ohm ringer; three bar generator; No. 5 transmitter; No. 3 double pole receiver. Length 33 inches; width 11 1/2 inches. Weight boxed—two telephones—90 pounds.

**Type 116 A** is equipped with a bridging 1600 ohm ringer; four bar generator; No. 5 transmitter; No. 3 double pole receiver. Length 33 inches; width 11 1/2 inches. Weight boxed—two telephones—90 pounds.

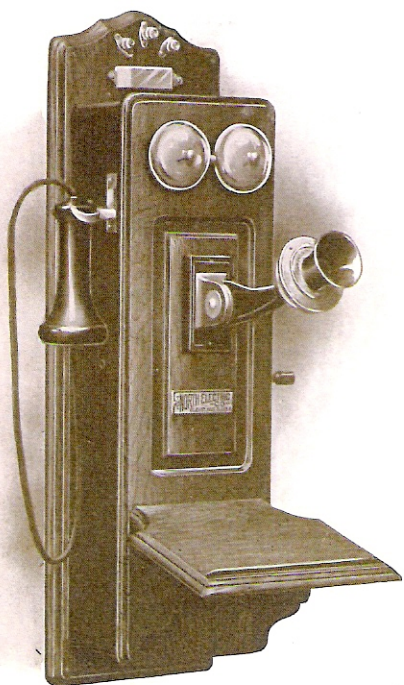
**Type 120 A** is equipped with a bridging 1000 ohm ringer; four bar generator; No. 5 transmitter; No. 3 double pole receiver. Length 33 inches; width 11 1/2 inches. Weight boxed—two telephones—90 pounds.

**Type 216 A** is equipped with a bridging 1600 ohm ringer; five bar generator; No. 5 transmitter; No. 3 double pole receiver. Length 33 inches; width 11 1/2 inches. Weight boxed—two telephones—100 pounds.

**Type 220 A** is equipped with a bridging 1000 ohm ringer; five bar generator; No. 5 transmitter; No. 3 double pole receiver. Length 33 inches; width 11 1/2 inches. Weight boxed—two telephones—100 pounds.

*Two Cells of dry Battery are included with each telephone.*



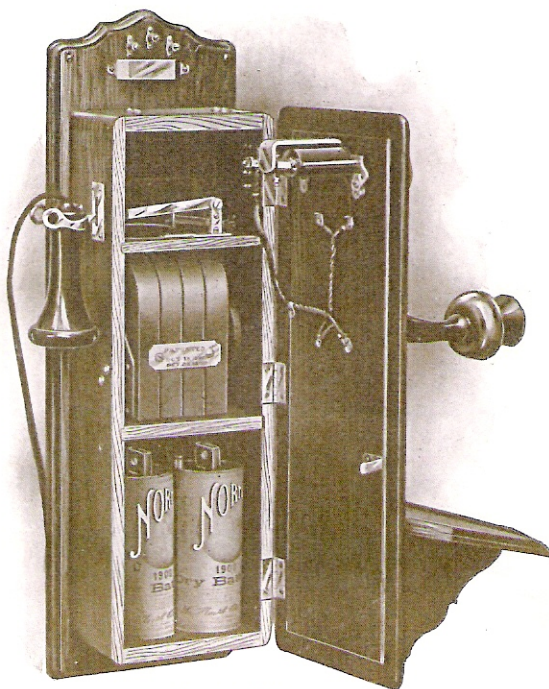


Type K—Closed.

All **type K** telephones have the same style cabinets, and may be furnished in either Oak or Walnut.

The figure preceding the letter designates the resistance of the ringer and the size of the generator.

The list on the following page shows the various kinds of **type K** telephones manufactured with the price of each.



Type K—Open.

**Type 6 K** is equipped with a series 80 ohm ringer; three bar generator; No. 6 transmitter; No. 3 receiver. Battery space for dry batteries only. Two dry batteries are furnished. Length 26 inches; width 8 inches. Approximate weight boxed—two telephones—80 pounds.

**Type 20 K** is equipped with a bridging 1000 ohm ringer; three bar generator; No. 6 transmitter; No. 3 double pole receiver. Length 26 inches; width 8 inches. Weight boxed—two telephones—80 pounds.

**Type 116 K** is equipped with a bridging 1600 ohm ringer; four bar generator; No. 6 transmitter; No. 3 double pole receiver. Length 26 inches; width 8 inches. Weight boxed—two telephones—80 pounds.

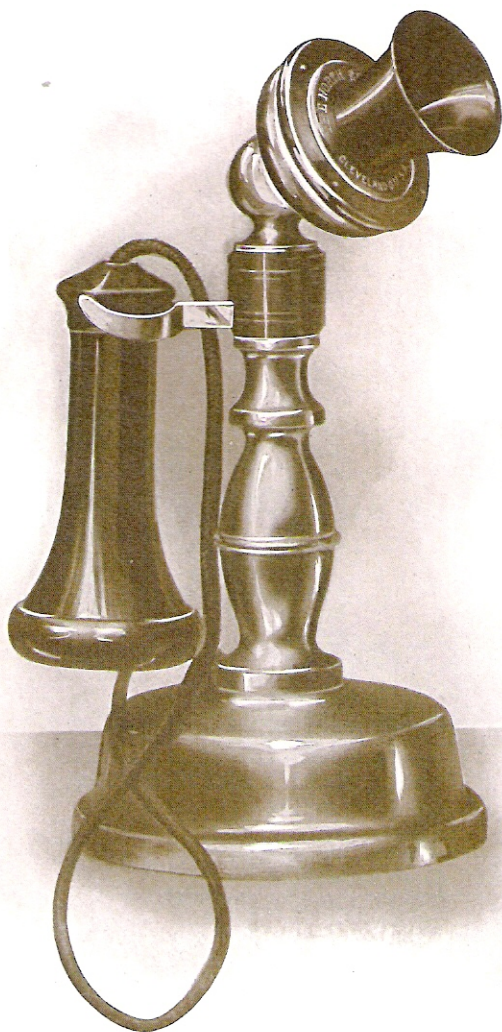
**Type 120 K** is equipped with a bridging 1000 ohm ringer; four bar generator; No. 6 transmitter; No. 3 double pole receiver. Length 26 inches; width 8 inches. Weight boxed—two telephones—80 pounds.

**Type 216 K** is equipped with a bridging 1600 ohm ringer; five bar generator; No. 6 transmitter; No. 3 double pole receiver. Length 26 inches; width 9 inches. Weight boxed—two telephones—90 pounds.

**Type 220 K** is equipped with a bridging 1000 ohm ringer; five bar generator; No. 6 transmitter; No. 3 double pole receiver. Length 26 inches; width 9 inches. Weight boxed—two telephones—90 pounds.

*Two Cells of dry Battery are included with each telephone.*





Type F Desk Set.

Height, 11  $\frac{1}{2}$  inches. Width of base, 5  $\frac{1}{2}$  inches. Weight, including extension bell, generator and batteries, boxed, 40 pounds.

The Desk set is a great convenience for the busy man, whose time is valuable, and who uses the telephone many times a day.

It can be used in connection with, or it may be used in place of a Wall telephone.

**Type 6 F** consists of a nickel plated Desk set, three bar generator and 80 ohm extension bell

**Type 20 F** consists of a nickel plated Desk set, three bar bridging generator and 1000 ohm extension bell.

**Type 116 F** consists of a nickel plated Desk set, four bar bridging generator, 1600 ohm extension bell.

**Type 120 F** consists of a nickel plated Desk set; four bar bridging generator, 1000 ohm extension bell.

**Type 216 F** consists of a nickel plated Desk set, five bar bridging generator, 1600 ohm extension bell.

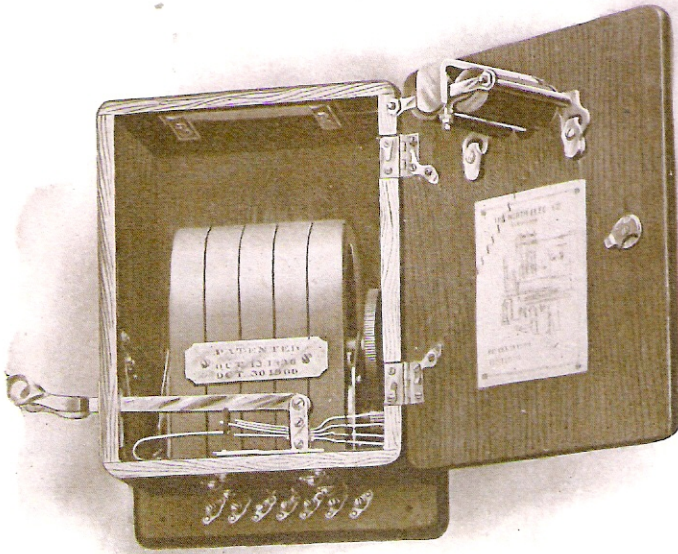
**Type 220 F** consists of a nickel plated Desk set, five bar bridging generator, 1000 ohm extension bell.

**Type F** Portable stand only—As shown in cut.

*Two Cells of dry Battery are included with each telephone.*



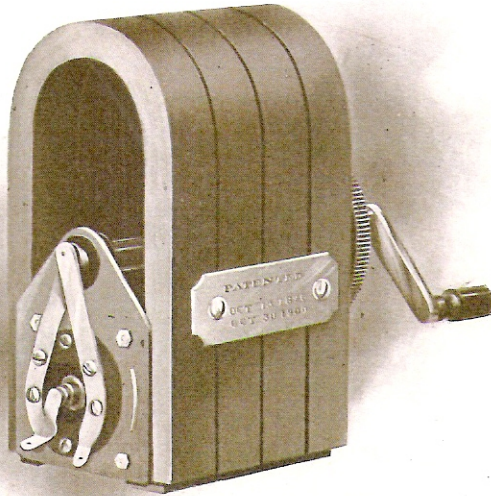
## MAGNETO BELLS.



No. 220 Magneto, 5 Bar Generator. 1000 Ohm Ringer.

- No. 6, series 3-bar, magneto with 80 ohm adjustable ringer.
- No. 20, bridging, 3-bar, magneto with 1000 ohm adjustable ringer.
- No. 116, bridging, 4-bar, magneto with 1600 ohm adjustable ringer.
- No. 120, bridging, 4-bar, magneto with 1000 ohm adjustable ringer.
- No. 216, bridging, 5-bar, magneto with 1600 ohm adjustable ringer.
- No. 220, bridging, 5-bar, magneto with 1000 ohm adjustable ringer.

## GENERATORS.

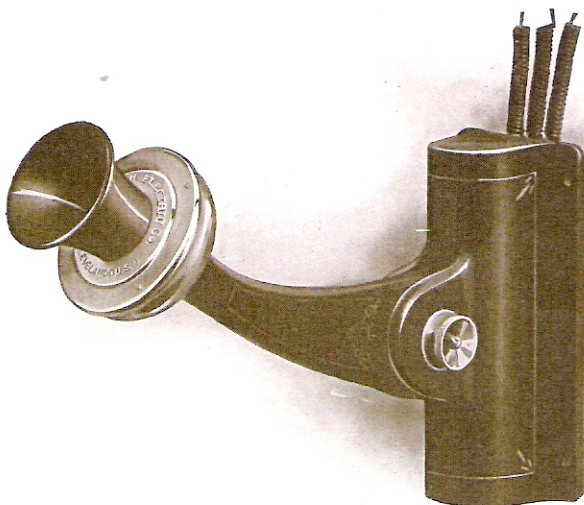


- No. 8, 3-bar series, alternating current,  $1\frac{1}{2}$  inch armature.
- No. 9, 3-bar series, direct current,  $1\frac{1}{2}$  inch armature.
- No. 15, 3-bar series, pulsating current,  $1\frac{1}{2}$  inch armature.
- No. 10, 3-bar bridging, alternating current,  $1\frac{1}{2}$  inch armature.
- No. 11, 3-bar bridging, direct current,  $1\frac{1}{2}$  inch armature.
- No. 16, 3-bar bridging, pulsating current,  $1\frac{1}{2}$  inch armature.
- No. 6, 4-bar bridging, alternating current, 2 inch armature.
- No. 7, 4-bar bridging, direct current, 2 inch armature.
- No. 17, 4-bar bridging, pulsating current, 2 inch armature.
- No. 12, 5-bar bridging, alternating current, 2 inch armature.
- No. 13, 5-bar bridging, direct current, 2 inch armature.
- No. 14, 5-bar bridging, pulsating current, 2 inch armature.

All generators equipped with positive automatic shunt and laminated armatures.

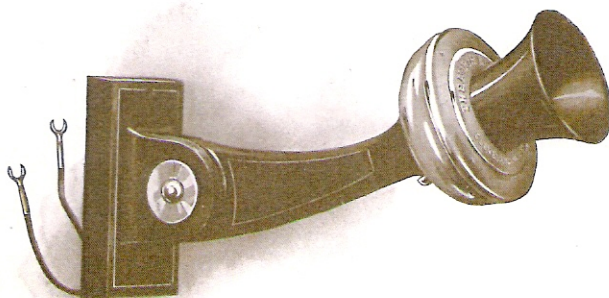


## TRANSMITTERS.



No. 5 Transmitter.

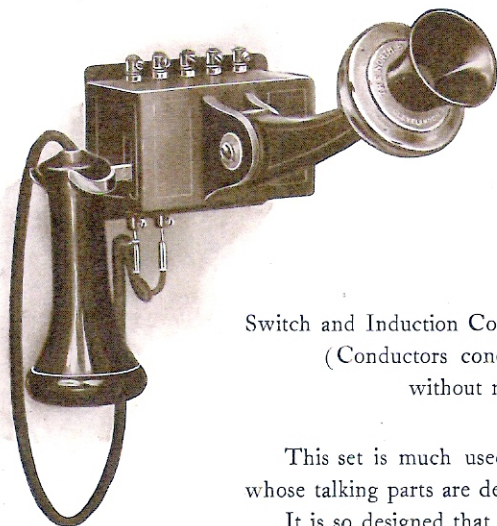
Complete with induction coil and concealed cords.



No. 6 Transmitter.

Has double conductors (concealed).

## TRANSMITTERS.



No. 11 Transmitter and  
No. 3 Receiver and Cord.

Switch and Induction Coil in Base of Transmitter.  
(Conductors concealed;—furnished  
without receiver.)

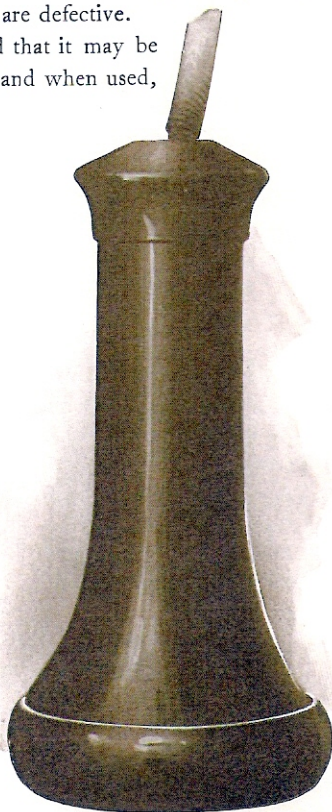
This set is much used to re-equip telephones,  
whose talking parts are defective.

It is so designed that it may be  
easily connected to any make of telephone, and when used,  
perfect results are assured.

## RECEIVERS.

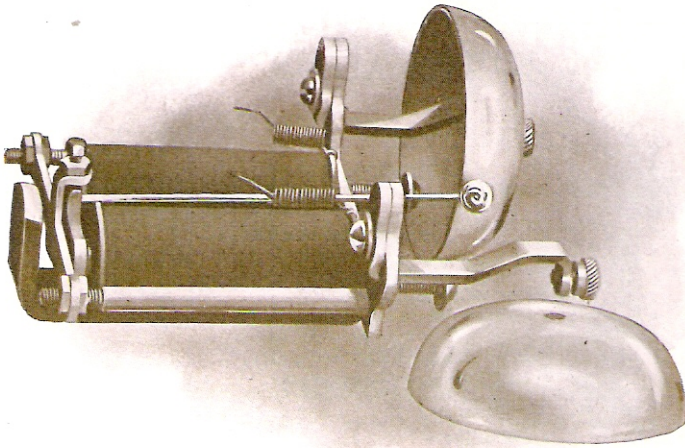
Pure hard rubber shell; best  
quality magnet steel. No exposed  
metal parts, easily adjustable, all  
parts easy of access.

Receiver cords furnished in  
lengths of 36 inches (worsted) for  
wall 'phones and 30 inches (silk)  
for desk sets. Other lengths and  
styles special.



No. 3 Receiver.

## RINGERS.

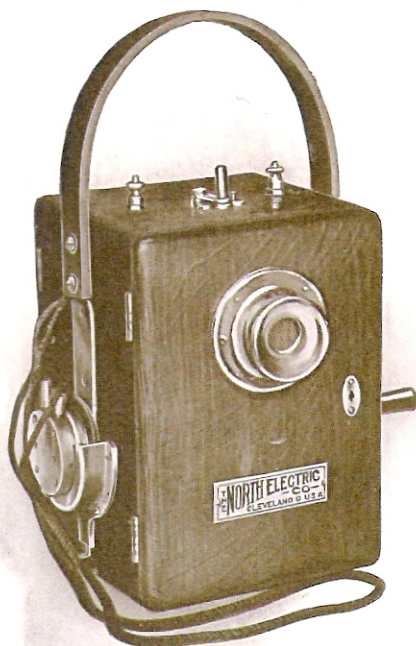


- No. 6, 80 ohms,  $\frac{3}{8} \times 1 \frac{1}{2}$  inch core, for alternating current.
- No. 7, 80 ohms,  $\frac{3}{8} \times 1 \frac{1}{2}$  inch core, for pulsating current.
- No. 6, 500 ohms,  $\frac{3}{8} \times 1 \frac{1}{2}$  inch core, for alternating current.
- No. 7, 500 ohms,  $\frac{3}{8} \times 1 \frac{1}{2}$  inch core, for pulsating current.
- No. 8, 1000 ohms,  $\frac{3}{8} \times 2 \frac{1}{2}$  inch core, for alternating current.
- No. 9, 1000 ohms,  $\frac{3}{8} \times 2 \frac{1}{2}$  inch core, for pulsating current.
- No. 8, 1200 ohms,  $\frac{3}{8} \times 2 \frac{1}{2}$  inch core, for alternating current.
- No. 9, 1200 ohms,  $\frac{3}{8} \times 2 \frac{1}{2}$  inch core, for pulsating current.
- No. 8, 1600 ohms,  $\frac{3}{8} \times 2 \frac{1}{2}$  inch core, for alternating current.
- No. 9, 1600 ohms,  $\frac{3}{8} \times 2 \frac{1}{2}$  inch core, for pulsating current.
- No. 8, 2000 ohms,  $\frac{3}{8} \times 2 \frac{1}{2}$  inch core, for alternating current.
- No. 9, 2000 ohms,  $\frac{3}{8} \times 2 \frac{1}{2}$  inch core, for pulsating current.
- No. 8, 2500 ohms,  $\frac{3}{8} \times 2 \frac{1}{2}$  inch core, for alternating current.
- No. 9, 2500 ohms,  $\frac{3}{8} \times 2 \frac{1}{2}$  inch core, for pulsating current.

Gong stands rigidly mounted on metal frame of ringers.



## PORTABLE TEST SETS.



No. 3—Lineman's Portable Test Set.

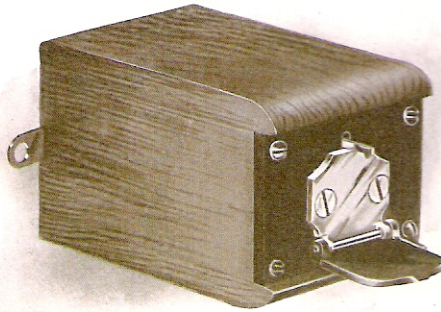
A complete telephone in polished Oak case with Carrying Strap.

Our Standard Test Set is equipped with 1000 ohm ringer and a generator delivering either alternating or pulsating current as desired, this feature being controlled by means of a five point switch, which admits of various combinations and meets all the requirements for which a Test Set can be used. This is without doubt the most practical and complete Test Set on the market.

We also manufacture a No. 10 Test Set with 500 ohm ringer, which delivers alternating current only.

These sets are  $8\frac{1}{2}$  inches by  $5\frac{1}{2}$  inches by  $5\frac{3}{4}$  inches and weigh  $12\frac{1}{2}$  pounds. Boxed ready for shipment, 20 pounds.

## EXTENSION DROPS.

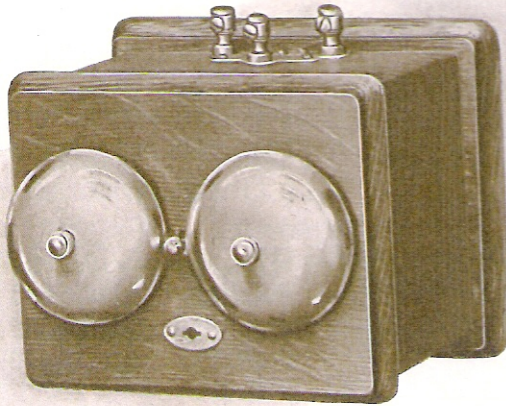


Extension Drop.

Made up with coils wound to 80, 500 and 1000 ohms.

This device is used as a constant ringing attachment. The shutter when down, closes a local circuit, to which an electric bell and battery may be connected, and which will ring constantly until the drop shutter is replaced.

## EXTENSION BELLS.



- 80 ohm adjustable silk wound ringer, mounted on metal frame.
- 500 ohm adjustable silk wound ringer, mounted on metal frame.
- 1000 ohm adjustable silk wound ringer, mounted on metal frame.
- 1200 ohm adjustable silk wound ringer, mounted on metal frame.
- 1600 ohm adjustable silk wound ringer, mounted on metal frame.
- 2000 ohm adjustable silk wound ringer, mounted on metal frame.
- 2500 ohm adjustable silk wound ringer, mounted on metal frame.



