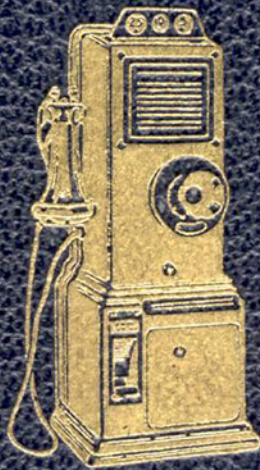


# GRAY

## Telephone Pay Stations



*Western Electric Company*  
SALES AGENT.





# **GRAY** Telephone Pay Stations

CATALOG No. 22

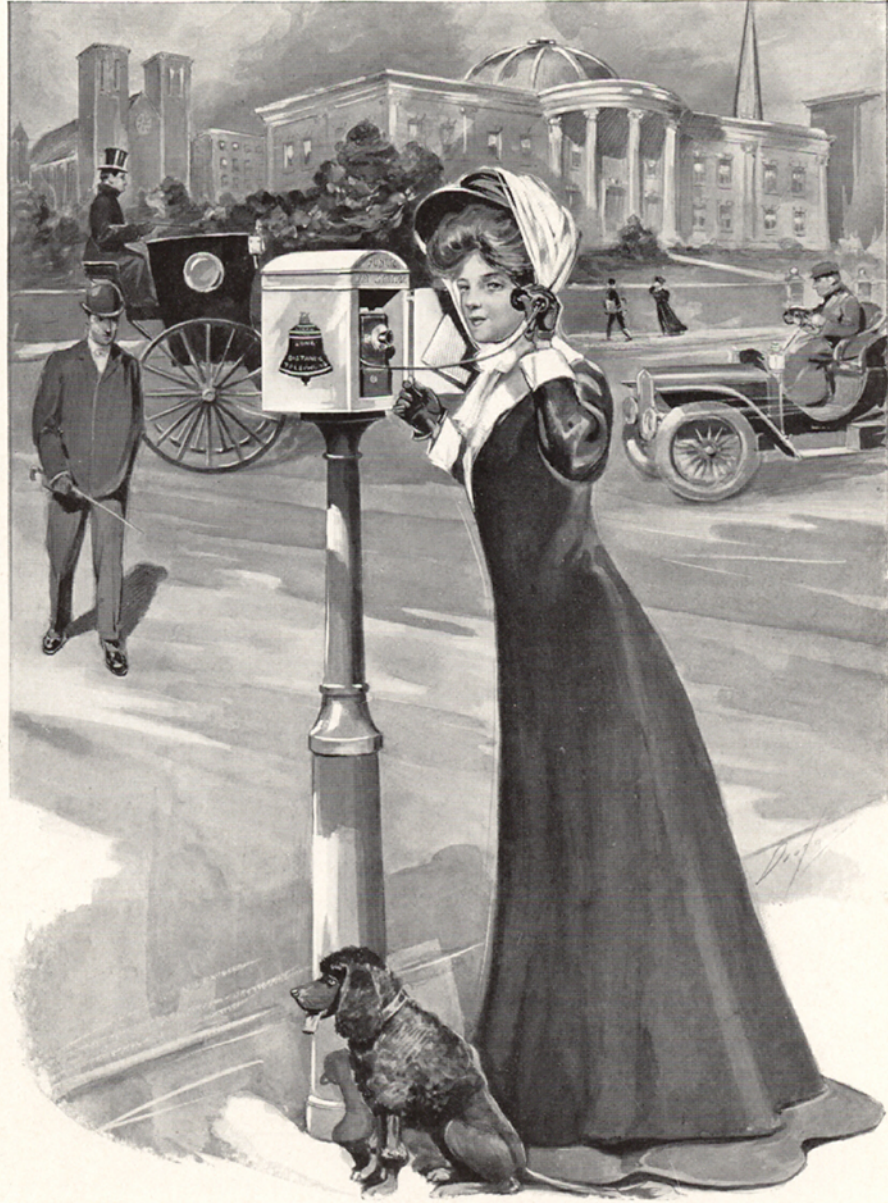
COMPILED, EDITED AND COPYRIGHTED BY

GEORGE A. LONG

1912











# GRAY

## Telephone Pay Stations

THE GRAY TELEPHONE  
PAY STATION CO.

Amos Whitney  
*President*

Charles Soby  
*Sec. & Treas.*

Geo. A. Long  
*Gen. Supt.*

E. S. Blair  
*Auditor*

Main Office and Works

HARTFORD, CONN. U.S.A.

Cable Address: "Graypay"





## SALES AGENTS AND DISTRIBUTORS

### *Western Electric* COMPANY

- Atlanta—**  
230 Lee Street,  
Atlanta, Ga.
- Boston—**  
30 Farnsworth Street,  
Boston, Mass.
- Buffalo—**  
98-102 Terrace,  
Buffalo, N. Y.
- Chicago—**  
500 South Clinton Street,  
Chicago, Illinois.
- Cincinnati—**  
301-305 Walnut Street,  
Cincinnati, Ohio.
- Dallas—**  
179 Main Street,  
Dallas, Texas.
- Denver—**  
1516 Curtis Street,  
Denver, Colorado.
- Des Moines—**  
Cor. Third and Depot Streets,  
Des Moines, Iowa.
- Indianapolis—**  
135 South Pennsylvania Street,  
Indianapolis, Indiana.
- Kansas City—**  
611-613 Wyandotte Street,  
Kansas City, Missouri.
- Los Angeles—**  
119 East Seventh Street,  
Los Angeles, California.
- Minneapolis—**  
114-120 Third Street North,  
Minneapolis, Minnesota.
- Milwaukee—**  
378 East Water Street,  
Milwaukee, Wisconsin.
- New York—**  
463 West Street,  
New York, N. Y.
- Oakland—**  
507 Sixteenth Street,  
Oakland, California.
- Oklahoma City—**  
1 East Sixth Street,  
Oklahoma City, Oklahoma.
- Omaha—**  
802 Farnam Street,  
Omaha, Nebraska.
- Philadelphia—**  
11th and York Streets,  
Philadelphia, Pennsylvania.
- Pittsburgh—**  
Post Office Address: Box 1591,  
Warehouse and Office:  
910 River Ave., Northside,  
Pittsburgh, Penna.
- Portland—**  
45 North Fifth Street,  
Portland, Oregon.
- Richmond—**  
6th and Cary Streets,  
Richmond, Virginia.
- St. Louis—**  
810 Spruce Street,  
St. Louis, Missouri.
- St. Paul—**  
235-237 East 6th Street,  
St. Paul, Minnesota.
- Salt Lake City—**  
445 South Third West Street,  
Salt Lake City, Utah.
- San Francisco—**  
680 Folsom Street,  
San Francisco, California.
- Seattle—**  
1518 First Avenue South,  
Seattle, Washington.

"SAVE TIME AND FREIGHT"



"TELEPHONE OUR NEAREST HOUSE"

### Foreign Houses and Agencies

EVERY BELL TELEPHONE IS



A WESTERN ELECTRIC TELEPHONE

- Canada—**  
Northern Elec. & Mfg. Co., Ltd.,  
Montreal, Canada,  
Winnipeg, Canada,  
Vancouver, B. C., Canada,  
Calgary, Alta, Canada,  
Toronto, Ont., Canada.
- London—**  
Western Electric Company,  
Norfolk House, Victoria Embankment,  
London, W. C., England.
- Antwerp—**  
Bell Tele. & Mfg. Co.,  
33 Rue Boudewyns,  
Antwerp, Belgium.
- Berlin—**  
Telephone Apparat Fabrik,  
Charlottenburg Salzufer 7,  
Berlin, Germany.
- Paris—**  
Societe Materiel Telephonique,  
46 Avenue De Breteuil,  
Paris, France.
- Milan—**  
Officina Electtrica,  
Milan, Italy.
- St. Petersburg—**  
N. C. Heisler & Company,  
12 Griaznaja,  
St. Petersburg, Russia.
- Tokyo—**  
Nippon Denki Kabushiki Kaisha,  
2 Mita Shikokumachi Shiba-Ku,  
Tokyo, Japan.
- Vienna—**  
Vereinigte Tele. & Telegraphen, Fabrik,  
XX/2 Dresdner Strasse 75,  
Vienna, Austria.
- Johannesburg—**  
F. P. Rice,  
P. O. Box 1571,  
Johannesburg, South Africa.
- Sydney—**  
R. B. Hungerford,  
163 Pitt Street,  
Sydney, New South Wales,  
Australia



# SELLING AGENTS

American Electric Company,  
Chicago, Illinois.

Julius Andrae & Sons,  
Milwaukee, Wisconsin.

Avery-Loeb Electric Company,  
Columbus, Ohio.

The F. Bissell Company,  
Toledo, Ohio.

B-R Electric & Tel. Mfg. Co.,  
Kansas City, Missouri.

Central Tel. & Electric Company,  
St. Louis, Missouri.

Central Electric Company,  
Chicago, Illinois.

S. H. Couch Company,  
Boston, Mass.

Columbian Electrical Company,  
St. Joseph, Missouri.

Cleveland Electrical Supply Co.,  
Cleveland, Ohio.

Cracraft Leich Electric Co.,  
Genoa, Illinois.

Dean Electric Company,  
Elyria, Ohio.

Duncan-Hobson Electric Company,  
Dallas, Texas.

Electric Appliance Company  
Chicago, Illinois.

Electrical Supply Company,  
Madison, Wisconsin.

The Ericsson Mfg. Company,  
Buffalo, N. Y.

Erner-Hopkins Company,  
Columbus, Ohio.

Holtzer-Cabot Electric Company,  
Boston, Mass.

Illinois Electric Company,  
Chicago, Illinois.

Interstate Supply Company,  
Sioux City, Iowa.

Johnston Electric Company,  
Omaha, Nebraska.

Kellogg Switchboard & Supply Co.,  
Chicago, Illinois.

Korsmeyer Company,  
Lincoln, Nebraska.

Manhattan Elec. Supply Company,  
Chicago, Illinois.

Manny-Myers Company,  
Seattle, Washington.

Modern Electric Company,  
Burlington, Iowa.

Monarch Tele. Mfg. Company,  
Chicago, Illinois.

Monarch Electric & Wire Company,  
Chicago, Illinois.

Nebraska Electric Company,  
Omaha, Nebraska.

North Electric Company,  
Cleveland, Ohio.

Northwestern Elec. Equipment Co.,  
St. Paul, Minnesota.

Nunn Electric Company,  
Amarillo, Texas.

Paragon Sellers Company,  
Chicago, Illinois.

Piedmont Electric Company,  
Asheville, N. C.

Pioneer Supply Company,  
Forest City, Penna.

Prior & Sallada Company,  
Williamsport, Penna.

Protective Electric Supply Co.,  
Fort Wayne, Indiana.

H. C. Roberts Elec. Supply Company,  
Philadelphia, Penna.

St. Paul Electric Company,  
St. Paul, Minnesota.

Stromberg-Carlson Tel. Mfg. Co.,  
Rochester, N. Y.

Swedish-American Telephone Co.,  
Chicago, Illinois.

J. B. Terry Company,  
Cedar Rapids, Iowa.

United Electric Company,  
Wichita, Kansas.


Utica Fire Alarm Telegraph Company,  
Utica, N. Y.

Varney Electrical Supply Company,  
Indianapolis, Indiana.

Vote-Berger Company,  
La Crosse, Wisconsin.

Wesco Supply Company,  
St. Louis, Missouri.





Prices shown in this catalogue are net  
F. O. B. Hartford, Conn.

The transmitters, receivers and bell boxes  
are shown for illustration purposes only  
and are not included.



# *INTRODUCTORY*



THE Gray Telephone Pay Station Company brought out the first device for the collection of telephone charges without the use of an attendant in the year of 1888. Previous to that time nothing in form of a practical pay station had ever been produced.

The fact that the Gray was the pioneer of automatic pay stations and the first to be placed upon the market, at once won for it an enviable reputation which it still continues to hold. We have not, however, been content to rest here but have devoted our energies and experience gained in over a quarter of a century's study in the development and manufacture of telephone tool equipment to the betterment of our product.

The tremendous number of our stations in actual use is the best indication of how well we have kept pace with the demand of the times.

The policy of the company is to anticipate the requirements in telephone toll apparatus and to produce a practical mechanism when the real need is manifest. The success of the company marks the success of this policy.



# ANNOUNCEMENT



WE take pleasure in calling to your attention the many pieces of apparatus of original and artistic design shown in this catalog. The published indorsements shown from telephone companies operating throughout the United States is the best proof we can furnish that Gray Pay Stations do give entire satisfaction under every and all conditions.

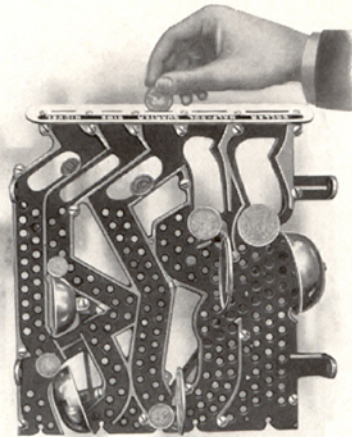
To those of our customers who have never visited our factory we have attempted to convey by the several shop views shown in this book the equipment we have for the accurate and rapid production of the line of goods we make and by these illustrations prove that careful manufacture is used employing jigs, dies, tools and special fixtures in order to insure interchangeability of parts and fidelity to design; also that each instrument is carefully tested as well as comparisons taken following each manufacturing operation.

The prestige attached to the Gray Pay Station is well known; it is the logical result of a continual and strict adherence to the principles of equity and exact justice upon which this business was established twenty-five years ago.



# GRAY TELEPHONE PAY STATIONS

With Gray Pay Stations: You Simply Drop in the Coin



Quick service.

With Gray Pay Stations the user is only required to drop the coin in the proper slot when told by the operator.

No levers to push or pull; no buttons to operate.

Traffic managers claim in case of the use of lever or push slide types of stations, too much of the operator's time is taken up in instructing subscribers in the use of such machines. For this reason, Gray Pay Stations are made entirely automatic in action.

The simplicity of Gray Pay Stations affords the lowest possible cost of maintenance



# MULTI-COIN PREPAY STATION

SUBJECT: Catalogue of Gray Pay Station Apparatus.

AMERICAN TELEPHONE AND TELEGRAPH COMPANY.

15 DEY STREET.

JOHN J. CARTY,  
CHIEF ENGINEER.

NEW YORK. January 10, 1912.

December 29--41894-131C-131E.

Mr. Charles Soby, Secretary and Treasurer,  
The Gray Telephone Pay Station Company,  
Hartford, Connecticut.

Dear Sir:-

I was interested to learn from your letter of December 29th that you are about to issue a new catalogue of Gray pay station apparatus and I shall be very glad to receive copies of this publication. The only multi-coin box that has been definitely approved by this Department is the new prepayment No. 60-A type to which you refer specifically, and a letter standardizing this piece of apparatus was sent to the associate companies a few days ago.

Under these conditions I see no objection to your stating in your catalogue, if you so desire, that this particular coin box was designed to meet the requirements of the American Telephone & Telegraph Company and that it has been standardized by them for use where a prepayment multi-coin box should be employed.

Yours truly,

ZWW-BMW.

*J. J. Carty* Chief Engineer.

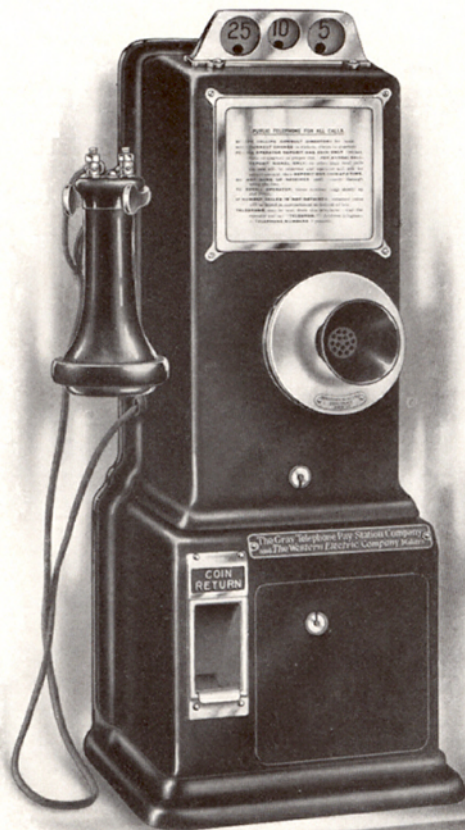
## STANDARDIZED

THE pay station illustrated and described in the following pages was designed to meet the requirements of the American Telephone & Telegraph Company, and is the only prepay multi-coin box that has ever been definitely approved by said company. A letter standardizing these stations has been sent out by the above to its associate companies, recommending its use in places where a prepayment multi-coin box should be employed.



# GRAY TELEPHONE PAY STATIONS

## Number 50-A MULTI-COIN PREPAY STATION



Mounted on shelf, using No. 139-A bracket. Price, complete, as shown, \$20.00



# GRAY TELEPHONE PAY STATIONS

## Prepayment Multi-Coin Collectors

**T**O produce a Pay Station that would provide for the prepayment of both local and long distance telephone calls has been a problem long given serious and intelligent thought, and only after years of patient study and experiment by inventors of long Pay Station experience and its development by the ablest Pay Station builders in the world, designed with a thorough knowledge of what not to do as well as what to do has enabled the contribution to the telephone world this most important mechanical achievement in the Pay Station art.

That a multi-coin prepayment station is a reality seems wonderful enough, but that it has been brought about plus every other advantage at once insures for it a ready adoption.

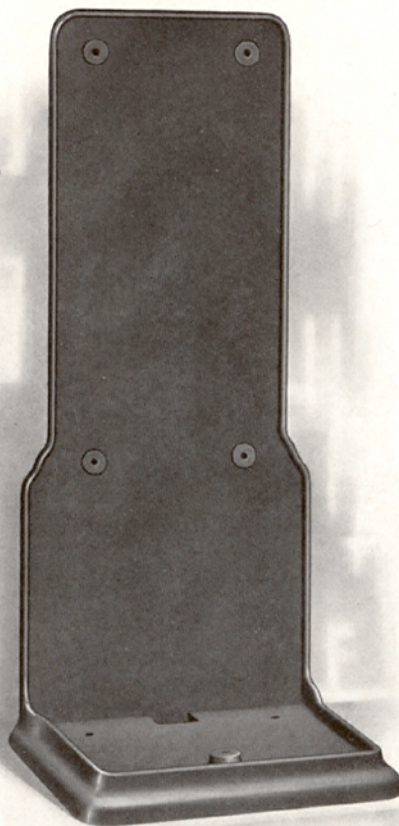
A perusal of the following pages will be interesting, instructive and convincing. An examination of the station will prove every claim we make for it.



# GRAY TELEPHONE PAY STATIONS

Number 139-A BRACKET

For use with Type 50-A Multi-Coin Collector



For shelf mounting in booths, etc. Price, bracket only, \$1.50



# GRAY TELEPHONE PAY STATIONS

## For Use in Large Cities

**T**HE multi-coin prepayment collector allows for the introduction of pay stations in large cities where heretofore the consideration of time required to operate other types of toll collectors has precluded the installation of such devices.

## Adopted by the New York Telephone Company for Use in New York City

**A**T the present time we are at work in co-operation with the Western Electric Company on an order of twenty-five thousand of these stations for use in New York City, many having already been installed and are giving entire satisfaction, which is the best indication that they do meet the most rigid demands ever imposed on a coin collector.

Exhaustive tests conducted by the American Telephone and Telegraph Company have proven these stations entirely efficient.



# GRAY TELEPHONE PAY STATIONS

Number 50-A MULTI-COIN PREPAY STATION



For wall mounting. Price, complete, as shown, \$18.50



# GRAY TELEPHONE PAY STATIONS

## Quick Service

**T**RAFFIC managers will appreciate the fact that the multi-coin prepay station removes the chance of contesting toll line charges in that it requires the deposit of the proper amount before the line is built up; it also prevents the called subscriber being held at the 'phone, as is the case with the older methods wherein the operator collects the money after the line has been built up and the called party reached.

## Operation

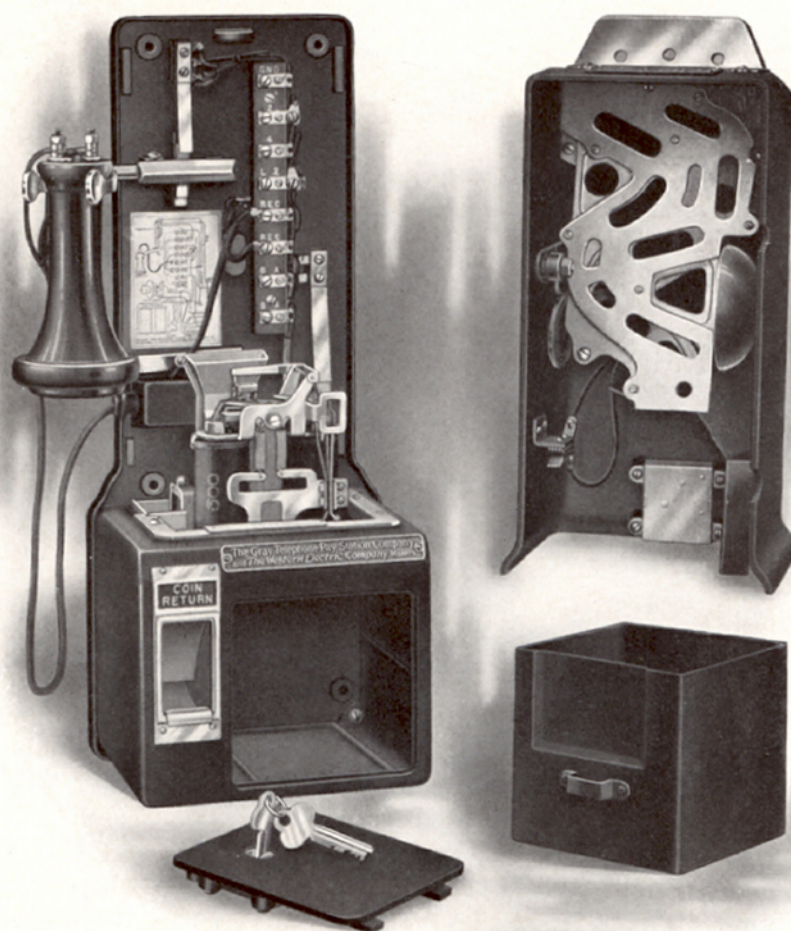
**T**HE first coin of any of the denominations for which the Station is arranged, when dropped into the proper slot, will trip a lever, causing the line switch to make contact, which lights the operator's signal lamp and gives the operator control of the coin suspension device through the electro-magnet, and as this magnet is polarized, the operator can deposit or refund at will the coins held in the coin suspension device.

A coin deposited in any slot other than of the denomination for which the slot is marked will automatically return to its patron.



# GRAY TELEPHONE PAY STATIONS

Number 50-A MULTI-COIN PREPAY STATION



Detail view, showing construction



# GRAY TELEPHONE PAY STATIONS

## Description

**T**HE prepay multi-coin station is of plain, simple design. It has deposit slots for nickels, dimes and quarters.

The signals are of the Gray code and are sounded automatically by the coins as they travel the runway which leads to the coin suspension device where all coins are temporarily retained.

The capacity of the coin suspension device is ten nickels, twenty dimes, or ten quarters.

The size of the coin tray is sixty cubic inches.

The money drawer is provided with an alarm switch which is operated by the plunger of the lock in the coin compartment door, and can be wired in the circuit with a local buzzer or bell to detect unauthorized persons attempting to remove the contents of the box.

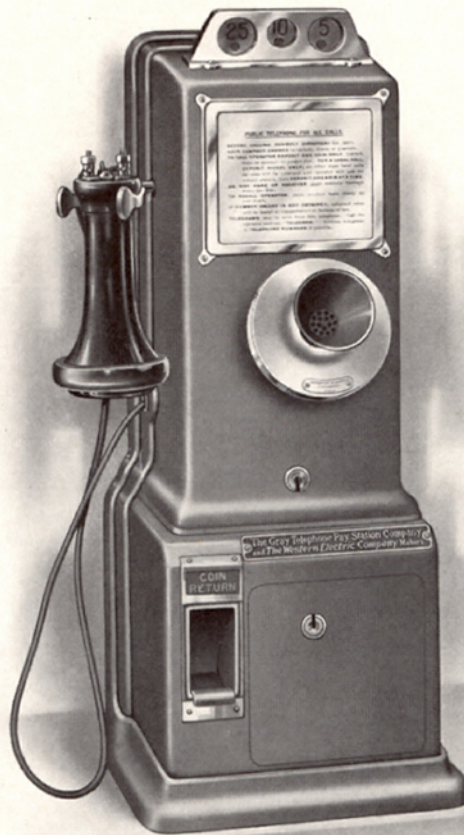
This station is very attractive in appearance, the surface is highly finished in black japan with all trimmings nickel-plated.

**DIMENSIONS: 7 inches wide x 6 inches deep, height 19 inches**



# GRAY TELEPHONE PAY STATIONS

Number 50-A MULTI-COIN PREPAY STATION



Furnished in solid bronze.

Made especially for Pennsylvania Railroad station, New York City



# GRAY TELEPHONE PAY STATIONS

## Number 102 UNIVERSAL TYPE PAY STATION

For either post-pay or prepayment service

FOR general pay station purposes this is the acme of perfection. It should appeal strongly to those companies who now operate post-pay but who will eventually change to prepayment service. This station should also find a ready adoption by telephone companies who will operate their Metropolitan exchanges prepay and their smaller exchanges post-payment. The fact that this station is convertible for either use should afford a large saving to operating companies in reserve stock equipment.

This station is the same as the No. 50-A excepting in place of the electrical prepay unit, they are regularly furnished with our coin conductor unit which provides for the operation of the station in post-payment service. (Call Central in the usual way; do not deposit any money until told to do so by operator).

The fact that this station affords for post-pay service all the improvements incorporated in the prepay which were made from a thorough and systematic study and do meet present-day requirements is a factor worthy of consideration.



# GRAY TELEPHONE PAY STATIONS

Number 102 Multi-Coin Universal Type Pay Station



For wall mounting. Price, complete as shown, \$15.00



# GRAY TELEPHONE PAY STATIONS

Number 102 Universal Type Pay Station — Continued

**I**N this station will be found the large money drawer, burglar alarm connection in cash box, the divided housing allowing for inspection and repairs without access to the cash compartment; also the coin return feature wherein money dropped into the wrong slot by mistake will return to the user. All the usual connections and switch-hook are included, this station only requiring the transmitter, receiver and bell box to complete the installation.

## Convertible

By changing the units and direction cards in these stations, they can be made to operate on post-pay or prepayment service.

This change can be accomplished by the removal of three screws and requires but a few minutes' time to accomplish.

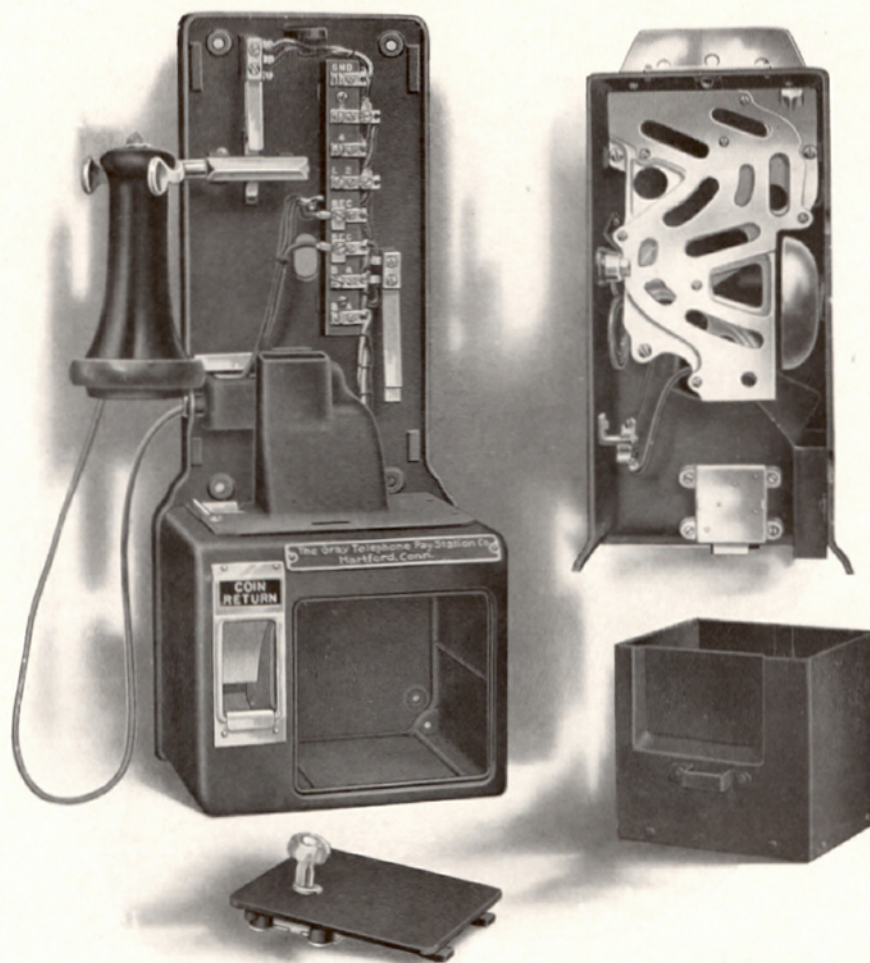
**Price \$15.00**

For shelf mounting see page 13.



# GRAY TELEPHONE PAY STATIONS

Number 102 Multi-Coin Universal Type Pay Station



Detail view showing arrangement used for post-payment service



# GRAY TELEPHONE PAY STATIONS

## Number 23-D COMPACT TYPE PUBLIC STATION

Extra Large Money Compartment

**T**HIS station is very compact and neat in appearance. It includes the complete mountings for the transmitter; also the switch-hook and usual connections. Their installation not only proves a decided advance in appearance over the old method of attaching a station to the telephone which was never designed for such service, but they further afford a substantial saving to the operating company by dispensing entirely with the regular telephone set. All that is required with this station is the usual bell box. The universal mounting plate on these stations allows for either wall or shelf attachment.

The top-box is hinged to the lower part of the housing and when unlocked swings forward, thus allowing for inspection and repairs without unlocking the cash drawer. The inspector and repairmen are confined to the upper compartment while the collector only has access to the cash drawer.

**Price \$14.00**

Coin rejector 50c. extra.

When the coin rejector is furnished, coins deposited in the wrong slot by mistake, automatically return to the patron through the rejector pocket.

**DIMENSIONS:** 10½ inches high x 6 inches wide x 4¼ inches deep



# GRAY TELEPHONE PAY STATIONS

Number 23-D MULTI-COIN POST-PAYMENT STATION



Price, complete as shown, \$14.00



# GRAY TELEPHONE PAY STATIONS

## Number 23-C COMPACT HOTEL TYPE

**T**HIS station was designed especially for use in the guests' rooms of hotels.

When so installed it not only performs all the functions of the regular phone as to the usual incoming business, special morning wake-up calls and intercommunicating service, but they further provide for the collection of toll charges through the private branch exchange operator, thus dispensing with writing tickets and the bookkeeping accounts which are necessary with the older methods. Hotels having these stations find they not only save time in presenting the departing guest his bill, but also prevent disputes and ill feeling.

**Price \$14.00**

These stations are compact and attractive. They are equipped with complete swivel for mounting the transmitter and include the switch-hook and complete terminal block. The transmitter connections are furnished and are flexible concealed type.

The top-box is hinged to the lower part of the housing and when unlocked swings forward, thus allowing for inspection of the electrical and mechanical parts without opening the cash drawer or disconnecting any of the wiring.

**DIMENSIONS: 10½ inches high x 6 inches wide x 3¼ inches deep**



# GRAY TELEPHONE PAY STATIONS

Number 23-C MULTI-COIN POST-PAYMENT STATION



Price, complete as shown, \$14.00



# GRAY TELEPHONE PAY STATIONS

## Number 23 WASHINGTON MODEL

**T**HIS station is intended to mount on the front of a wall-type telephone set in the same manner as our No. 23-B shown on page 31.

The top-box is hinged to the lower part of the housing and when unlocked swings forward, thus allowing for inspection and repairs without unlocking the cash drawer. The inspector and repairmen are confined entirely to the upper compartment, while the collector only has access to the cash drawer, each requiring a different key.

We furnish a complete swivel on the front of these stations to mount the transmitter.

**Price \$12.50**

Coin rejector 50c. extra.

When the coin rejector is furnished, coins deposited in the wrong slot by mistake, automatically return to the patron through the rejector pocket.

**DIMENSIONS: 10½ inches high x 6 inches wide x 3¼ inches deep**



# GRAY TELEPHONE PAY STATIONS

Number 23 MULTI-COIN POST-PAYMENT STATION



Price, complete as shown, \$12.50



# GRAY TELEPHONE PAY STATIONS

Number 23-B WASHINGTON MODEL

Extra Large Money Compartment

**T**HIS station mounts directly on the telephone set and is equipped with a complete swivel to carry the transmitter. The money compartment is of large proportions. The top-box is hinged to the lower part of the housing and when unlocked swings forward, thus allowing for inspection or repairs without unlocking the cash drawer.

The inspector and repairmen are confined entirely to the upper compartment, while the collector only has access to the cash drawer, each requiring a different key.

**Price \$13.00**

Coin rejector 50c. extra.

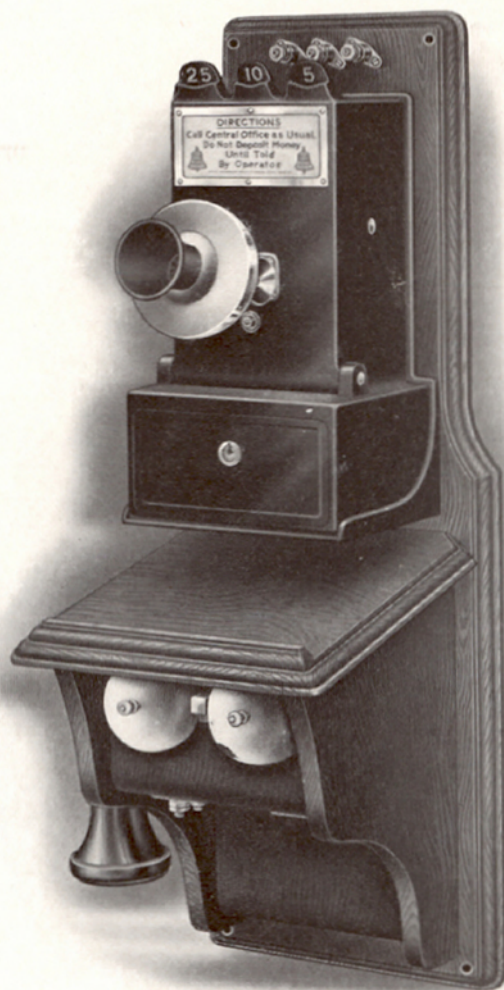
When coin rejector is furnished, coins deposited in the wrong slot by mistake automatically return to the patron through the rejector pocket.

**DIMENSIONS:** 10½ inches high x 6 inches wide x 4¼ inches deep



# GRAY TELEPHONE PAY STATIONS

Number 23-B MULTI-COIN POST-PAYMENT STATION



Price, complete as shown, \$13.00



# GRAY TELEPHONE PAY STATIONS

## Number 23-A WASHINGTON MODEL

**T**HIS station is intended to fasten to a shelf, making a very convenient arrangement for booth service. By unscrewing the clamps, the desk set can be removed without disturbing the pay station. The top-box is hinged to the lower part of the housing, and when unlocked swings forward, thus allowing for inspection and repairs without unlocking the cash drawer. The inspector and repairmen are confined entirely to the upper compartment while the collector only has access to the money drawer, each requiring a different key. We furnish complete mounting plate and arms with each station.

**Price \$13.00**

Coin rejector 50c. extra.

When the coin rejector is furnished, coins deposited in the wrong slot by mistake, automatically return to the patron through the rejector pocket.

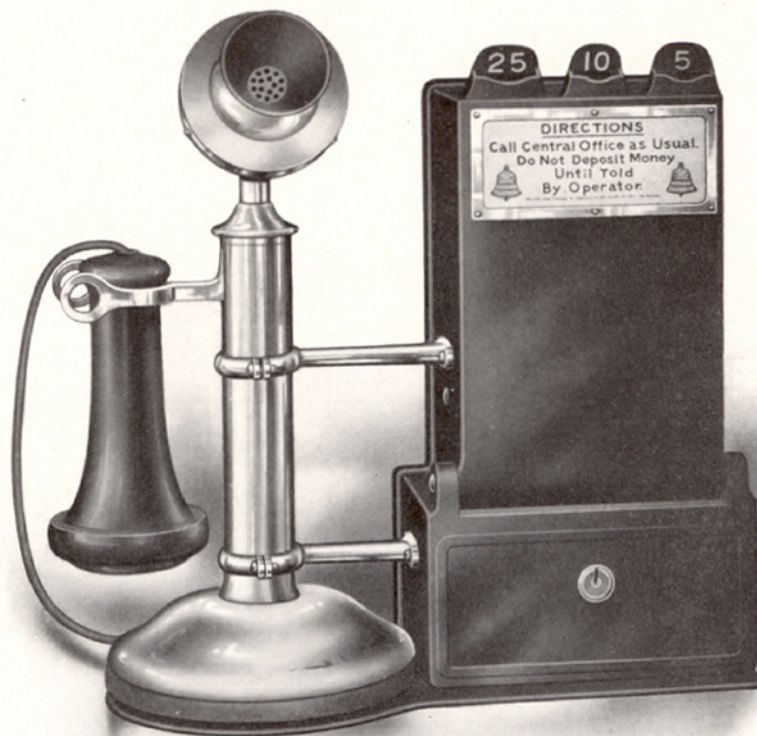
In ordering 23-A Pay Station, state what type desk stand is to be used that we may furnish fittings accordingly.

**DIMENSIONS: 10½ inches high x 6 inches wide x 3¼ inches deep**



# GRAY TELEPHONE PAY STATIONS

Number 23-A MULTI-COIN POST-PAYMENT STATION



Price, complete as shown, \$13.00



# GRAY TELEPHONE PAY STATIONS

## Gray Portable Type Pay Stations

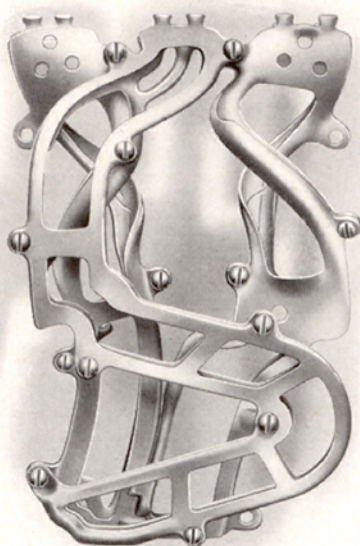
**I**N the supplying of telephone service with coin collectors attached, especially of the portable type, it is of the utmost importance that due consideration be given the fact that the user in holding the telephone receiver has the free use of but one hand to manipulate the coin collector, and to compel the performance of any function other than to deposit the coin in the slot is impracticable. The coin collector not being rigidly mounted, any attempt to compel the working of levers or push slides that might be attached to same would naturally tip over the coin collector, proving not only unsatisfactory to the user, but it would also bring a very high maintenance from the breakage resulting from same.

With Gray Pay Stations, no levers to push or pull, the user simply drops in the coin, making them particularly adapted to portable service.



# GRAY TELEPHONE PAY STATIONS

Much Thought and Study is Given to the Development of  
Our Apparatus



## Our Spiral Coin Chute

**T**HE Spiral Coin Chute used in our portable stations prevents the operating of signals with pennies or the shaking out of the money, as they afford a four-way ejector and work automatically no matter what angle the station may be tilted on. They are reliable under every and all conditions.

Here we utilize the principle of gravity and centrifugal force



# GRAY TELEPHONE PAY STATIONS

## The Number 24 Portable Pay Station, Compact Type

Has slots for nickels, dimes and quarters

**T**HIS station is particularly well adapted for private branch exchange service.

It was designed especially for the Wanamaker department store in Philadelphia where two thousand of our stations are now in service. This is the largest installation of its kind in the world. These stations are made of aluminum and are very light in weight. All the contacts, switch-hook and transmitter swivel are mounted on the back-plate and are included with the station. The removable back allows for inspection and repairs without unlocking the cash drawer. The inspector's key opens the back while the collector only controls the money drawer. The locks are entirely different and require special keys. These stations present a very attractive appearance.

**Price \$14.00**

No. 21 is the same in all respects as our No. 24, but is furnished in iron in place of aluminum.

**Price \$12.50**

These stations can be had equipped with No. 28-A ringer at an additional cost of \$1.00 each.

**DIMENSIONS: 15 inches high x 4½ inches wide x 4¼ inches deep**



# GRAY TELEPHONE PAY STATIONS

Number 24 MULTI-COIN PORTABLE STATION



Price, complete as shown, \$14.00



# GRAY TELEPHONE PAY STATIONS

## The Number 14 PORTABLE PAY STATION

Has slots for nickels, dimes and quarters

**T**HIS is the first portable pay station ever produced designed especially for use in the Frick Building at Pittsburg. Soon after its appearance a demand arose for this type station, and we have furnished thousands of them yearly, shipping them to all parts of the country. They are so arranged that by unlocking the back, inspection and repairs can be made without unlocking the cash drawer. They contain our spiral chute and are unbeatable. They are especially attractive in appearance and of a well-balanced design.

**Price \$11.00**

In ordering No. 14 Pay Stations, state what type and make desk set is used and we will furnish fittings accordingly.

**DIMENSIONS: 11 inches high x 4½ inches wide x 3¼ inches deep**



# GRAY TELEPHONE PAY STATIONS

Number 14 MULTI-COIN PORTABLE STATION



Price, complete as shown, \$11.00



# GRAY TELEPHONE PAY STATIONS

## SINGLE-SLOT PORTABLE TYPE PAY STATIONS

Has one slot only

**F**OR supplying service at tables in hotels, restaurants and similar places, these stations are very popular.

They are arranged to clamp to the regular desk set telephone. The cash drawer sets flush with the front of housing. They are furnished in black Japan with trimmings nickel-plated, making a very attractive piece of apparatus.

**Number 13-A                  Nickels only**

**Price \$5.50**

Dimensions: 9½ inches high x 3½ inches wide x 3¼ inches deep.

**Number 28-A                  Dimes only**

**Price \$7.50**

Dimensions: 10 inches high x 4½ inches wide x 3½ inches deep.

In ordering state make and type desk set used; we will furnish mountings accordingly



# GRAY TELEPHONE PAY STATIONS

## SINGLE - SLOT PORTABLE STATIONS



Number 13-A

Nickels only

Price \$5.50



Number 28-A

Dimes only

Price \$7.50



# GRAY TELEPHONE PAY STATIONS

## Number 22 WESTERN MODEL ONE-SLOT PAY STATION

For nickels only

THESE stations are particularly well adapted for private or party line residential service. They mount directly to the back-board and include a complete swivel to mount the transmitter on. The housing is divided into two separate compartments, the upper containing the coin mechanism and usual connections, while the lower protects the cash box.

Inspection and repairs can be made without unlocking the cash drawer or disconnecting any wires. The inspector and repairmen are confined entirely to the upper compartment while the collector has the lower. Each requires a different key.

**Price \$5.00**

The drawer front sets flush with the front of the case and has large coin capacity. These stations are highly finished in black Japan with nickel-plated trimmings and present a very attractive appearance.

**DIMENSIONS:** 8¾ inches high x 4½ inches wide x 3¼ inches deep



# GRAY TELEPHONE PAY STATIONS

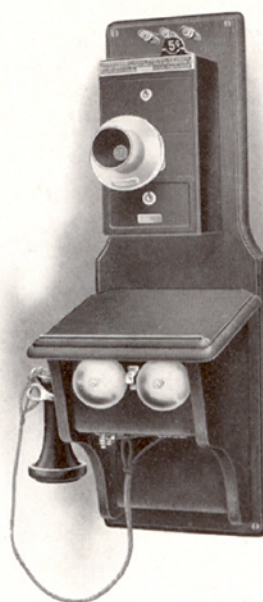
## Number 22 WESTERN MODEL ONE-SLOT PAY STATION

For nickels only



Price \$5.00

This illustration shows  
Number 22 mounted





# GRAY TELEPHONE PAY STATIONS

## Number 8-A NEW MODEL ONE-SLOT PAY STATION

For nickels only

**T**HIS station is a local toll collector, of extra heavy castings. The money drawer sets flush with the front of case and has large coin capacity.

The automatic feature should appeal to all, no electrical connections required and the signals being sounded without requiring the user to pull levers or buttons, affords the most rapid and satisfactory service with the lowest possible maintenance.

These stations can be mounted directly on the backboard by setting the transmitter arm to one side or they may be attached with plates as shown on opposite page. The latter method we recommend.

**Price \$3.50. Mounting plates 35 cts.**

This station will always be furnished without plates unless otherwise specified. If mounting plate is desired please state what type wall set is used.

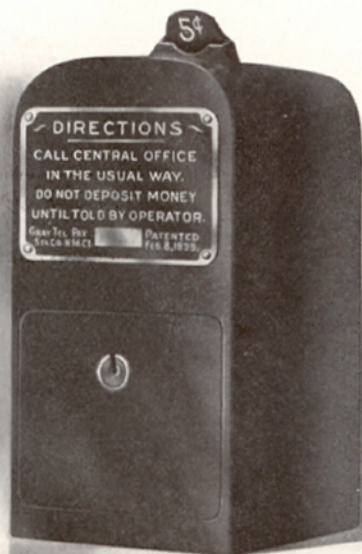
**DIMENSIONS: 7 inches high x 3 $\frac{3}{8}$  inches wide x 3 $\frac{1}{8}$  inches deep**



# GRAY TELEPHONE PAY STATIONS

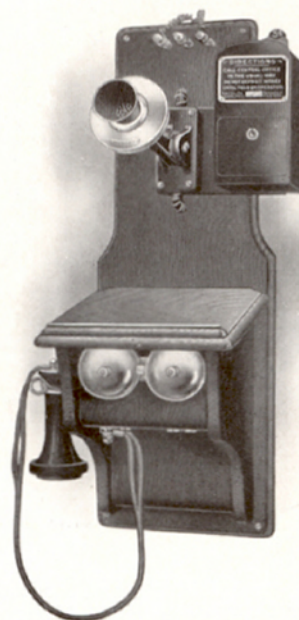
## Number 8-A NEW MODEL ONE-SLOT PAY STATION

For nickels only



Price \$3.50

This illustration shows  
Number 8-A mounted





# GRAY TELEPHONE PAY STATIONS

## Number 28 ST. LOUIS MODEL ONE-SLOT PAY STATION

Has slots for dimes only

**T**HIS station was designed for service in St. Louis. It is made of extra heavy castings. The money drawer sets flush with front of case and has large coin capacity. It attaches to the regular wall type telephone set by means of a mounting plate, which is included with the station. This is a very durable and practical piece of equipment, finished in black Japan with nickel direction plate, making a very attractive appearance.

Price \$5.50

The automatic feature in our stations should appeal to all, the fact that signals are sounded without requiring the user to pull levers or buttons, affords the most rapid and satisfactory service with the lowest possible maintenance cost.

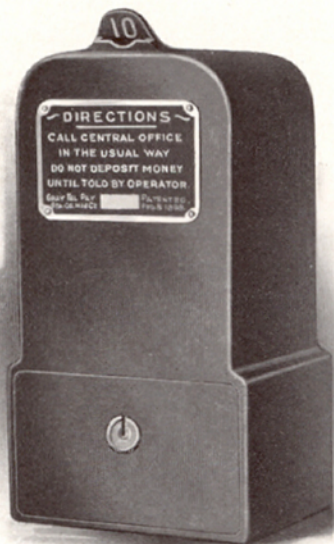
**DIMENSIONS:** 9 inches high x 4 $\frac{3}{4}$  inches wide x 3 $\frac{3}{8}$  inches deep



# GRAY TELEPHONE PAY STATIONS

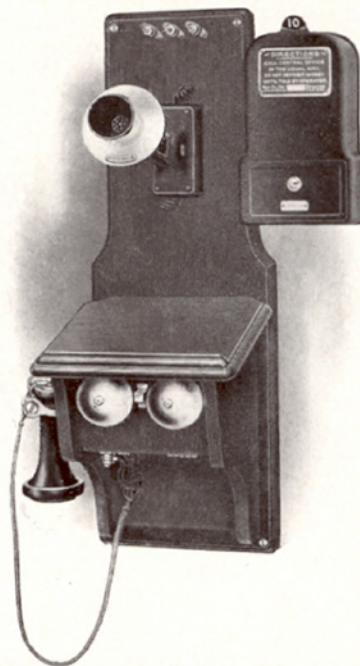
## Number 28 ST. LOUIS MODEL ONE-SLOT PAY STATION

For dimes only



Price \$5.50

This illustration shows  
Number 28 mounted





# GRAY TELEPHONE PAY STATIONS

## THE SHIELD TYPE PAY STATION

Adopted by the National Interstate Convention. The Shield is the standard pay station sign

**T**HIS pay station is especially recommended to independent telephone companies, as it not only serves for the use it is intended but has a distinctive advertising feature as well.

They are finished in red, white and blue enamel, and present a striking appearance.

Number 10-A pay station attaches directly to the backboard and includes a complete swivel for the transmitter.

**Price \$8.50**

Number 10 pay station attaches to the right of the telephone set by means of a mounting plate which is included with each station.

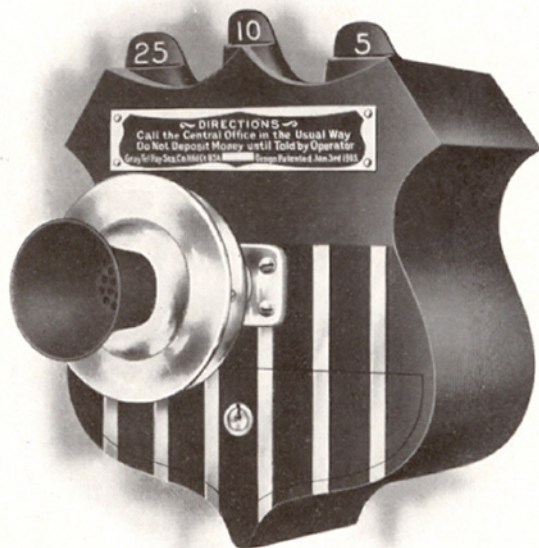
**Price \$8.50**

**DIMENSIONS:** 8½ inches high x 6¾ inches wide x 3¼ inches deep



# GRAY TELEPHONE PAY STATIONS

## THE SHIELD TYPE PAY STATION



**Number 10-A Pay Station**

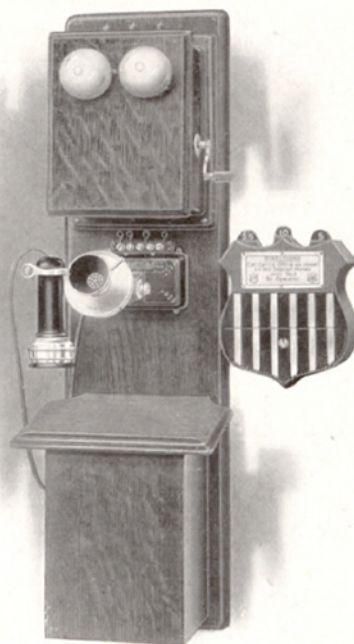
With Swivel for Transmitter

**Price \$8.50**

**Number 10 Pay Station**

With Mounting Plate

**Price \$8.50**





# GRAY TELEPHONE PAY STATIONS

## Number 7 PAY STATION WALL TYPE

Has slots for nickels, dimes and quarters

**T**HIS is one of the most popular three-slot stations we make. They are in service by some of the largest telephone companies in the country. In the cities of Boston, Massachusetts, and Pittsburgh, Pennsylvania, over 30,000 of the number 7 type are in use.

They are intended to mount on the front of the regular wall type telephone and are drilled to take any transmitter arm specified.

The parts in these stations are all interchangeable and the workmanship and finish of the highest order.

**Price \$8.00**

We can furnish this station equipped with transmitter arm at an extra cost of 50c. each.

No. 7-A is the same as No. 7 but has an extra large money drawer.

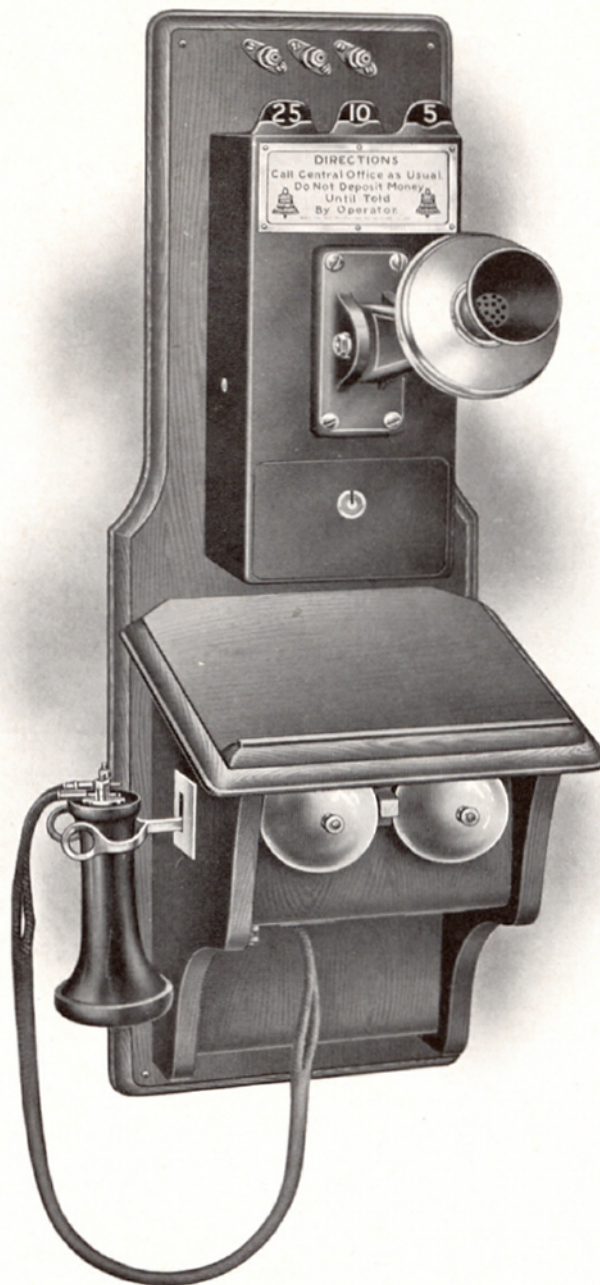
**Price \$8.50**

**DIMENSIONS:** 9 inches high x 4½ inches wide x 3 inches deep



# GRAY TELEPHONE PAY STATIONS

Number 7 PAY STATION WALL TYPE



This illustration shows Number 7 mounted



## GRAY TELEPHONE PAY STATIONS

**Number 27 Pay Station Boston Model, Wall Type**

Has slots for nickels, dimes and quarters Extra large money drawer

**D**ESIGNED especially for The New England Telephone & Telegraph Company.

Made only to order.

This station is the same as our number seven with the exception of the money drawer, which is of extra large capacity.

They are intended for use in places where the traffic is heavy.

Their installation allows for a uniform collection from such points with the other regular pay stations.

**Price \$9.50**

This station when used with the W. E. Co.'s number 85 set requires a special back-board.

**DIMENSIONS: 12½ inches high x 4⅝ inches wide x 3⅞ inches deep**



# GRAY TELEPHONE PAY STATIONS

Number 27 Pay Station Boston Model, Wall Type



Price, complete as shown, \$9.50



# GRAY TELEPHONE PAY STATIONS

## Number 11 PAY STATION FOR SIDE MOUNTING

Has slots for nickels, dimes and quarters

**T**HIS station is designed to attach to any regular wall type telephone set in present use. They are connected to the telephone by means of a mounting plate, which is included with the station.

**Price \$8.00**

Directions for mounting number 11 pay station:

Remove the screw from the lower left-hand corner of transmitter arm. Insert a three-sixteenths inch drill in the screw hole and drill through the back-board. Insert from the front of the telephone set the long machine screw furnished with the pay station, and screw it up firmly into the tapped hole in the mounting plate. This long screw forms a conductor for the signals. From the back of the mounting plate insert flat-head wood screw, using any of the screw holes best adapted for the wall set used. The four washers should be used on the back of the corners of the back-board to level up the telephone.

No. 11-A is the same as No. 11, but has an extra large money drawer.

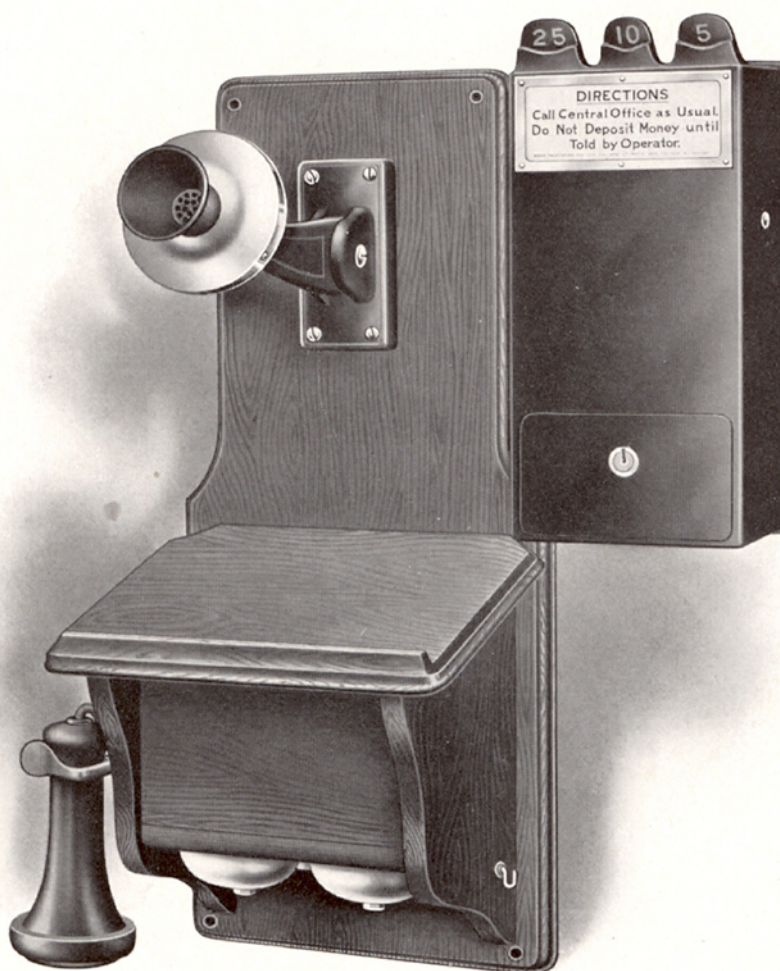
**Price \$8.50**

**DIMENSIONS:** 9 inches high x 4½ inches wide x 3 inches deep



# GRAY TELEPHONE PAY STATIONS

Number 11 PAY STATION FOR SIDE MOUNTING



Price \$8.00



# GRAY TELEPHONE PAY STATIONS

## Number 18 Pay Station With Front Transmitter Mount

**T**HIS station dispenses with the use of a regular transmitter arm, a complete swivel being included for mounting the transmitter.

These stations mounting as they do on the center of the regular telephone set make a very good arrangement.

Finished in black japan with nickel-plated trimmings, presenting a very neat appearance.

Price \$8.00

Number 18-A is the same as No. 18 but has extra large money drawer.

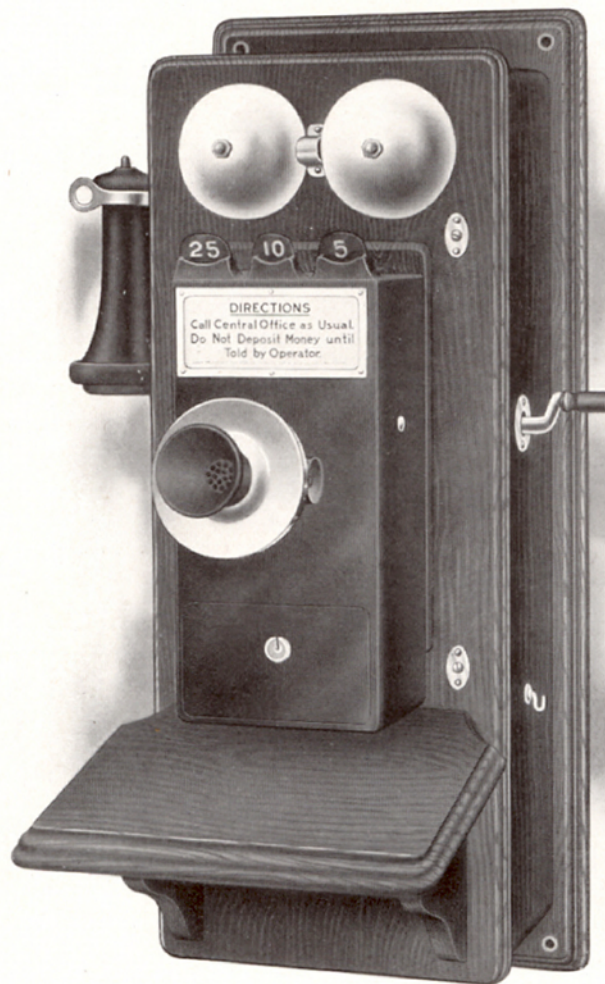
Price \$8.50

**DIMENSIONS:** 11 inches high x 4½ inches wide x 3¼ inches deep



# GRAY TELEPHONE PAY STATIONS

Number 18 Pay Station With Front Transmitter Mount



Price \$8.00



# GRAY TELEPHONE PAY STATIONS

## Number 20 PAY STATION SHELF TYPE

Has slots for nickels, dimes and quarters

**T**HIS station is intended to fasten to a shelf, making a very convenient arrangement for use in booths.

Complete mounting plates and arms are included with each station.

By unscrewing the arms, the desk set can be removed for inspection without disturbing the pay station.

All parts used in the manufacture of these stations are interchangeable.

They are finished in black japan with nickel trimmings and present a very fine appearance.

**Price \$10.50**

In ordering the number 20 pay station state what make and type desk stand is to be used and we will furnish fittings accordingly.

**DIMENSIONS: 10 $\frac{3}{4}$  inches high x 4 $\frac{1}{4}$  inches wide x 3 $\frac{1}{4}$  inches deep**



# GRAY TELEPHONE PAY STATIONS

Number 20 PAY STATION SHELF TYPE



Price \$10.50 ✓



# GRAY TELEPHONE PAY STATIONS

## GRAY PAY STATIONS ON AUTOMATIC SYSTEMS

**W**E furnish our stations for use on automatic telephone systems. When so installed they require the toll operator's supervision as in manually operated exchanges.

In most cases where our stations are used on automatic systems, they are equipped with manual telephone equipment. Some companies, however, prefer to use the regular automatic telephone sets in order to maintain the identity of their apparatus.

The following automatic companies use Gray Pay Stations:

Auburn, Maine	New Bedford, Mass.
Columbus, Ohio	Portland, Maine
Fall River, Mass.	Portland, Oregon
Grand Rapids, Mich.	Wilmington, Del.
Lewiston, Maine	Westerly, R. I.
Los Angeles, Cal.	

And many smaller companies.

Gray Pay Stations are especially well adapted for use with automatic telephones. The user has simply to drop the coin in the slot. No levers or buttons to operate, thereby eliminating all chance of confusion in the proper manipulation of the regular calling dial.

For hotels, central office buildings, clubs, stores, and places of a like character



# GRAY TELEPHONE PAY STATIONS

## GRAY PAY STATIONS ON AUTOMATIC SYSTEMS



This Number 101 station can be fastened to a shelf in booth, making a very compact arrangement, or it can be used portable for show-case service.

**Number 101 Pay Station**  
**Price \$10.50**

The Number 100 is attached to the wall type telephone by means of a plate, which is included with each station.

**Number 100**  
**Pay Station**  
**Price \$8.00**

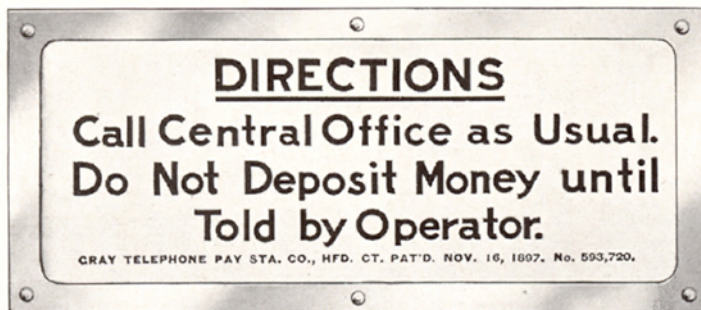




# GRAY TELEPHONE PAY STATIONS

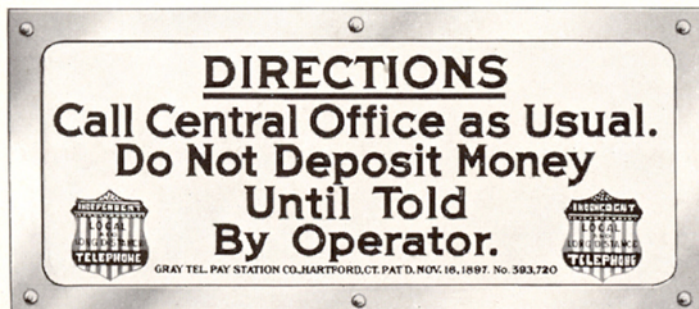
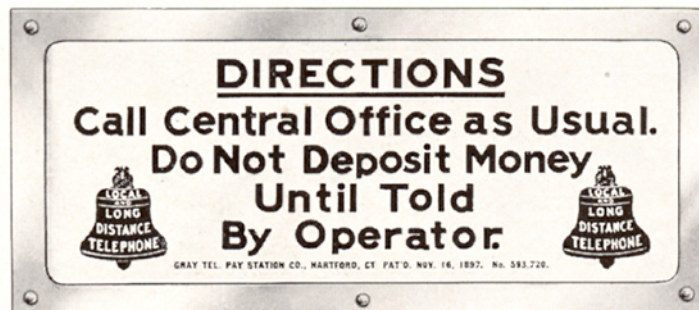
## DIRECTION CARDS

We furnish our multi-coin post-pay stations with direction cards as follows:



Number One: Plain, one color.

Number Two: Composition in black, with bells in blue.



Number Three: Composition in black, with shield in red, white and blue.

DIMENSIONS: Scale  $\frac{3}{4}$  Size



## CABINET PAY STATIONS

THE cabinet type pay stations illustrated and described in the following pages are especially well adapted for use in depots, hotels, central office buildings and places where a general long distance toll line business is to be had. The fact that our cabinet type pay stations have coin slots from a nickel up to and including the dollar, their installation fully provides for future growth in long distance toll line service collections.

We furnish these cabinets in various woods and finishes to harmonize with the surroundings.

The material, finish and construction are of the best to be had.

The cash compartment in these stations are of semi-steel, lined with cold-rolled sheet steel, affording absolute security. They are equipped with registered pin-tumbler locks with a capacity of 20,000 different changes.



# GRAY TELEPHONE PAY STATIONS

## Number 1 WALL CABINET AUTOMATIC

Has slots for nickels, dimes quarters, half-dollars and dollars

**F**OR first-class hotels, central offices, public stations, or places of similar character where seating facilities are not required.

**Price \$38.00**

Does not include bell box, transmitter, receiver or cord.

These stations are furnished in quartered oak, cherry or mahogany, and will always be supplied in oak, unless otherwise specified.

They are equipped with hollow transmitter arm, thus allowing for concealed wires.

All trimmings are highly finished in black japan and nickel-plated surfaces.

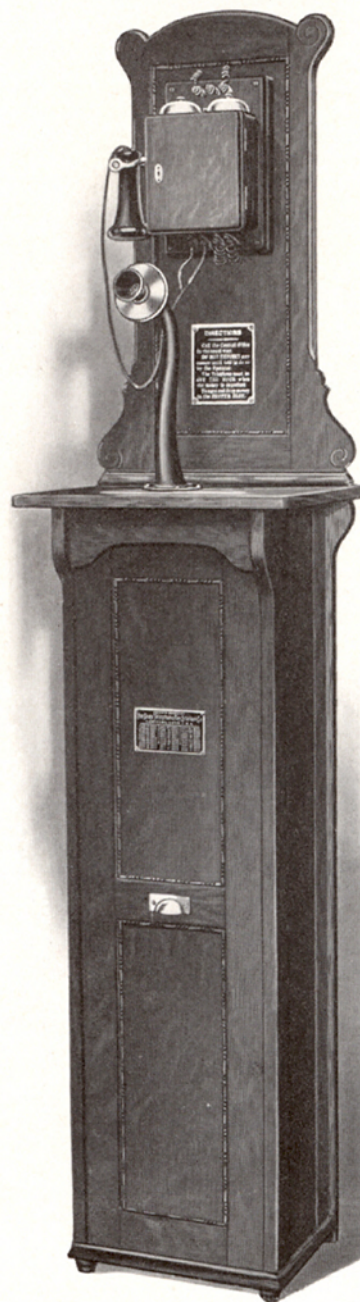
Floor space required, 13½ inches wide x 10½ inches deep, height, 74 inches.

This station is adapted for common battery or magneto system ; has space for batteries



# GRAY TELEPHONE PAY STATIONS

Number 1 WALL CABINET AUTOMATIC





# GRAY TELEPHONE PAY STATIONS

## Number 2 WALL SET AUTOMATIC

Has slots for nickels, dimes, quarters, half-dollars and dollars

FOR country hotels, stores, depots, and places of similar character, where the amount of business or the character of the surroundings will not warrant a more expensive station.

Price \$27.00

Does not include magneto, transmitter, receiver or cord.

These stations are very compact and neat in appearance. They are furnished in black walnut only. All trimmings are highly finished in black japan and nickel-plated surfaces.

Batteries can be inspected and renewals made without unlocking the cash drawer or disturbing any of the wiring.

Dimensions: 14 inches wide x 11 inches deep, 37 inches high.

This machine has space for four batteries and adapted for magneto system only



# GRAY TELEPHONE PAY STATIONS

Number 2 WALL SET AUTOMATIC





# GRAY TELEPHONE PAY STATIONS

## Number 3 WALL CABINET AUTOMATIC

Has slots for nickels, dimes, quarters, half-dollars and dollars

FOR city stores, office buildings, clubs or ordinary places of similar character, where the amount of business or space available will not permit of a larger or more expensive station.

**Price \$27.00**

Does not include bell box, transmitter head, receiver or cord.

These stations are furnished in black walnut, cherry or quartered oak, and will always be supplied in walnut, unless otherwise specified.

Dimensions: 14 $\frac{1}{4}$  inches wide x 9 inches deep, height, 38 inches.

All trimmings finely finished and nickeled.

Where the booth or surrounding furnishings are of oak or light finish, we recommend the stations to be ordered in quartered oak, to harmonize.

This machine is adapted for common battery or magneto systems; has no battery space



# GRAY TELEPHONE PAY STATIONS

Number 3 WALL CABINET AUTOMATIC





# GRAY TELEPHONE PAY STATIONS

## Number 4 DESK SET AUTOMATIC

Has slots for nickels, dimes, quarters, half-dollars and dollars

**F**OR first-class hotels, office buildings, clubs, central office, public stations, and places of similar character, where seating facilities are required.

Price \$38.00

Does not include bell box, transmitter, receiver or cord.

These stations are furnished in quartered oak, cherry or mahogany, and will always be supplied in oak, unless otherwise specified.

The top is laminated construction. The transmitter arm is hollow, allowing for concealed wiring. All trimmings are highly finished in black japan and nickel-plated surfaces.

Dimensions: Floor space required, 25½ inches wide x 17 inches deep, height, 56 inches.

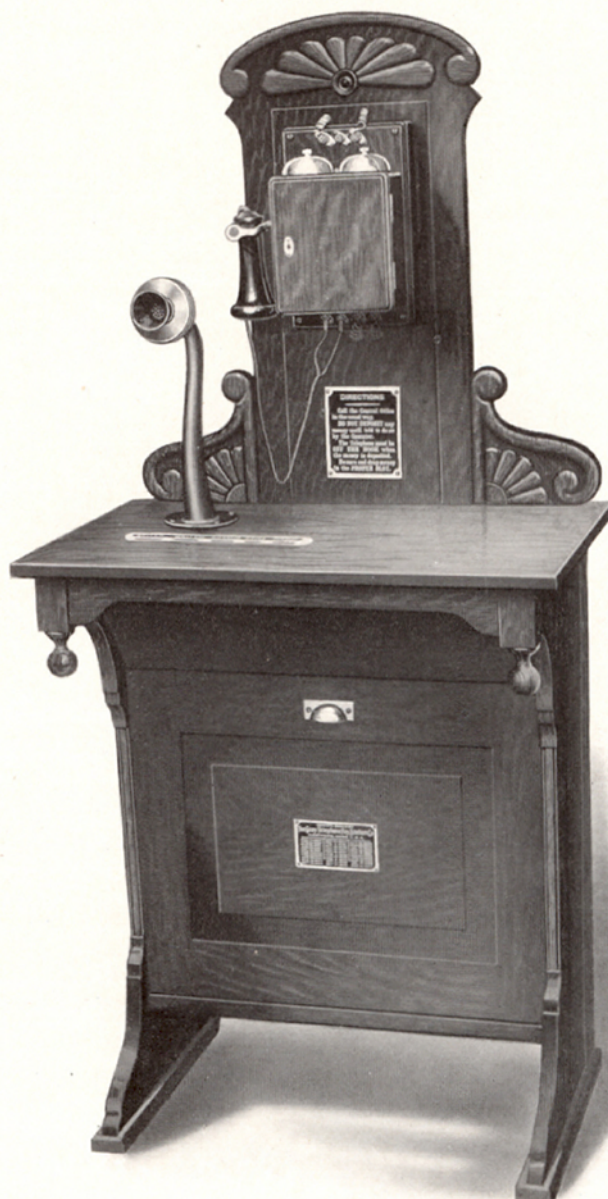
The material and finish of this station are of the very best, but it is not so highly ornamented as No. 5.

Machine is adapted for either common battery or magneto systems; has battery space



# GRAY TELEPHONE PAY STATIONS

Number 4 DESK SET AUTOMATIC





# GRAY TELEPHONE PAY STATIONS

## Number 5 AUTOMATIC DESK SET

Has slots for nickels, dimes, quarters, half-dollars and dollars

**F**OR the highest class hotels and expensively furnished clubs, where the surroundings are of the highest character, and there is no restriction on the space available.

**Price \$40.00**

Does not include bell box, transmitter, receiver or cord.

Furnished in the finest quality selected quartered oak, dark finish only.

The top is of laminated construction. The transmitter arm is hollow, allowing for concealed wiring.

All trimmings are highly finished in black japan and nickel-plated surfaces.

Dimensions: Floor space required, 27 inches wide x 20 inches deep, height, 57 inches.

This station is the finest made and is adapted to common battery or magneto systems



# GRAY TELEPHONE PAY STATIONS

Number 5 AUTOMATIC DESK SET





# GRAY TELEPHONE PAY STATIONS

## Number 6 WALL SET AUTOMATIC

Has slots for nickels, dimes and quarters only

**F**OR city or country pay stations where the demand is for a station of three slot capacity, with large money drawer, etc.

**Price \$22.50**

Does not include bell box, transmitter, receiver or cord.

Furnished in the finest quality selected quartered oak, dark finish only.

All trimmings are in black japan and nickel-plated surfaces.

This station is so arranged that coins dropped in the wrong slot by mistake will automatically return to the user.

Dimensions: 9½ inches wide x 8½ inches deep, height, 35 inches.

Machine is adapted for common battery or magneto systems, but has no battery space



# GRAY TELEPHONE PAY STATIONS

N u m b e r 6 W A L L S E T A U T O M A T I C





# GRAY TELEPHONE PAY STATIONS

## Number 19 WALL SET AUTOMATIC

Has slots for nickels, dimes, quarters and half-dollars only

**F**OR hotels, office buildings, clubs, stores,  
and places of a like character, where  
the dollar slot is not desired.

**Price \$25.00**

Does not include bell box, transmitter,  
receiver or cord.

This pay station is very compact and durable. Furnished in black walnut only.

All trimmings are highly finished in black japan and nickel-plated surfaces.

**DIMENSIONS:** 11½ inches wide x 8½ inches deep, height 35 inches



# GRAY TELEPHONE PAY STATIONS

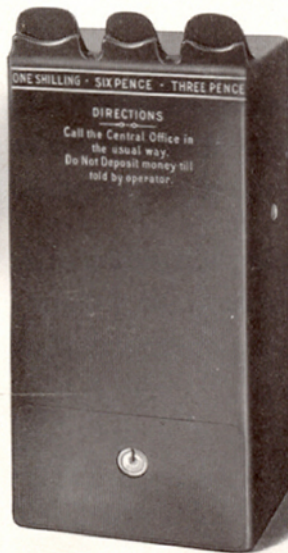
Number 19 WALL SET AUTOMATIC





# GRAY TELEPHONE PAY STATIONS

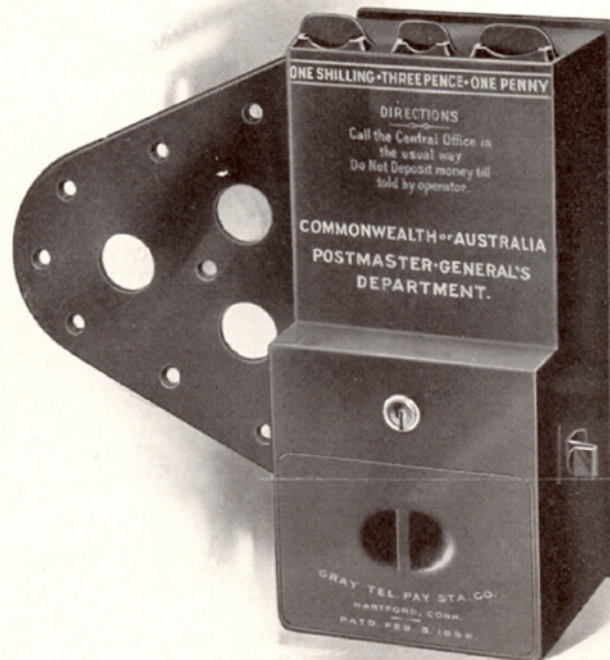
## PAY STATIONS FOR FOREIGN COINS



OUR pay stations when arranged to operate with foreign coins are made only to order.

We are prepared to furnish anything in the way of size, form or number of slots required.

Gray Pay Stations are now in use in many of the foreign cities of the world.



Estimates furnished on application



## STREET CORNER PAY STATIONS

THE Gray Street Corner Pay Station has proven beyond all doubt both practical and a public necessity. Their installation in public parks, drives and residential districts where there are no stores for the usual location of pay stations have shown by the amount of money they collect that there is a demand for this type of pay station.

Street corners with the pay station installed appeal to many telephone users who object to going to the cafe or cigar store where regular pay stations are often located.

Our street stations are in use in the following cities:

Atlanta, Ga.	Mobile, Ala.
Buffalo, N. Y.	Memphis, Tenn.
Bridgeport, Conn.	Milwaukee, Wis.
Boston, Mass.	Norfolk, Va.
Birmingham, Ala.	Nashville, Tenn.
Cleveland, Ohio	New Orleans, La.
Cincinnati, Ohio	Nantucket, Mass.
Columbus, Ga.	Ogden, Utah
Dayton, Ohio	Pensacola, Fla.
Detroit, Mich.	Philadelphia, Pa.
Elmira, N. Y.	Richmond, Va.
Evansville, Ind.	Savannah, Ga.
Kansas City, Mo.	Utica, N. Y.



# GRAY TELEPHONE PAY STATIONS

## Number 15 STREET CORNER PAY STATION

Has slots for nickels, dimes and quarters

**F**URNISHED in finest grade of Scotch iron; finished with weather-proof aluminum paint, making a very attractive and profitable station. They include the compact type of coin collector, together with all the usual telephone parts and connections, requiring only the transmitter and receiver to complete the installation. Post extends into the ground three feet and has openings to take wires from two sides.

**Price \$45.00**

Dimensions: Box, 17½ inches high by 14 inches wide by 11 inches deep.

Weight complete: About two hundred pounds.

With the street station, telephone companies derive a revenue from the public which otherwise would be entirely lost.

As an advertising feature, especially where there is telephone competition, the street phone is unsurpassed. They also pay for themselves in a short time.

What other mode of advertising will do as well?

For common battery systems only. Can be had with either bell or shield emblems



# GRAY TELEPHONE PAY STATIONS

## Number 15 STREET CORNER PAY STATION



These stations should be located convenient to the regular electric light. The directory hangs inside the door. You simply drop in the coin when told by Central.



# GRAY TELEPHONE PAY STATIONS

## Number 15 STREET CORNER PAY STATION

Has slots for nickels, dimes and quarters

**T**HIS station is the same as the number fifteen, but does not have the post. They are mounted on the regular telephone pole or building.

**Price \$35.00**

**Dimensions:** Box, 17½ inches high by 14 inches wide by 11 inches deep.

**Weight complete:** About one hundred pounds.

Public drives having street-corner pay stations have proven very convenient to persons, especially automobilists who have occasion to communicate with home or garage.

In case of fire, especially at night, these stations are of the utmost value. You simply go to the nearest street phone and report to fire headquarters direct. All calls for Fire, Police or Hospital are made free. Think of the possibilities of these phones in saving life and property. They are certainly a public necessity.

For common battery systems only. Can be had with either shield or bell emblems



# GRAY TELEPHONE PAY STATIONS

## Number 16 STREET CORNER PAY STATION



Mounted on telephone pole in suburban district. The street station is much used by that class of people who will not sign a regular telephone service contract.



# GRAY TELEPHONE PAY STATIONS

## IRON TELEPHONE BOXES AND POSTS

**F**OR street railways, police and special requirements. We are prepared to furnish the trade anything required in the line of waterproof iron boxes fitted with locks for furnishing telephone service to those having keys only. These boxes are so designed that the door and its supporting frame are made separate from the box, thus allowing for renewal, all parts being interchangeable. The door is fitted with our patent gravity hinges and is self-closing without the use of springs. We can furnish these boxes to mount on pole or building, or they can be had with post. Any special lettering or design to order.

**Price of box complete \$20.00**

Weight of box about 80 pounds.

Dimensions: 17½ inches high x 14 inches wide x 11 inches deep.

**Price of Post \$10.00**

Weight about 110 pounds.

Dimensions: Length 87½ inches, diameter at top 9 inches, diameter at bottom 6 inches.

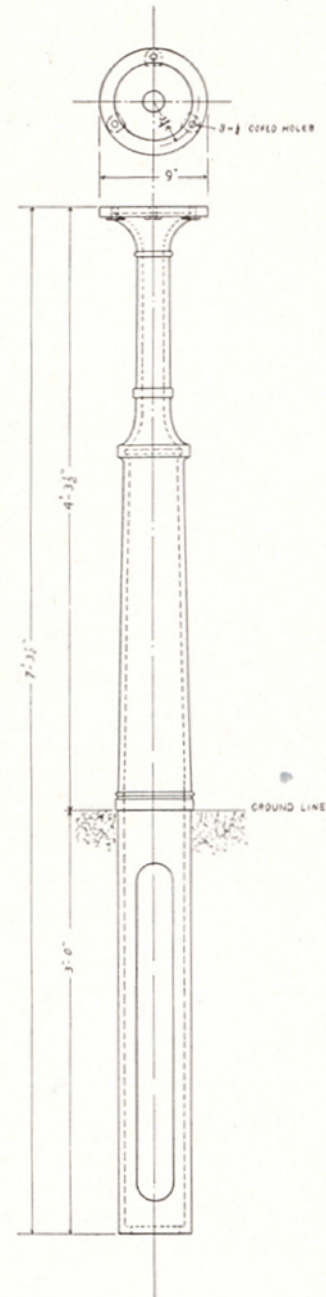


# GRAY TELEPHONE PAY STATIONS

## IRON TELEPHONE BOXES AND POSTS



Weatherproof iron posts and boxes  
for special telephone service





# GRAY TELEPHONE PAY STATIONS

## LOCKS

**I**N ordering our multi-coin pay stations, state what type lock is required. On orders where the lock is not specified, we will furnish the individual type with two keys to each lock.

### Sub Treasury Locks

All Alike

These locks are all made on the same change and require but one key. While this method eliminates the collector's carrying a bunch of keys, they do not offer the security to be had with some of our other locks.

### Sub Treasury Locks

Individual Type      Master Key

These locks are all made to different changes, each lock requiring its own key; in addition a master key can be had which will unlock all. We do not recommend this type lock, as it does not offer the security to be had with some of our other types.

### Sub Treasury Locks

Individual Type

These locks each require a different key and this method has been adopted by practically all the large telephone companies. In service the keys are arranged on sealed rings according to each route the collector travels, the collector turning in the keys with the money. We fully recommend this method.

### Safe Deposit Locks

This lock requires the insertion of two different keys in order to throw the bolt. It is intended for use where the pay stations are operated on a percentage basis. The number one key is intended to be held by the proprietor, while the number two key is carried by the collector. The proprietor must first insert his number one key, turning as far as possible. Then this key is withdrawn and the collector inserts the number two key which completes the function of operating the lock. This precludes the possibility of the collector opening the cash drawer during the proprietor's absence and saves disputes as to the amount the storekeeper is entitled to.

### Combination Locks

This lock cannot be operated without both a special key and the combination upon which each lock is set. Combinations can be changed without removing the lock from the drawer, capacity of different changes being about two thousand. Where this lock is in service, the collector carries but one key and a card showing the combinations which each station is set to.

### Pin Tumbler Individual Corrugated Key Locks

These locks are operated by a corrugated key and afford the utmost security. Each lock has its own individual key, and the number of changes that each can be furnished on is unlimited.

Note: In ordering pay stations equipped with safe deposit locks, add 25 cents each to the regular price of the station. For combination or pin-tumbler locks, add 50 cents each.



## MEASURED SERVICE REGISTERS



THE theory of supplying telephone service where each subscriber should pay according to the number of calls used is nearly as old as the telephone art itself and has long been agreed upon as the only fair method to both the public and the operating company. The question of a satisfactory and reliable way of keeping track of the calls has been the main factor in restricting the growth of measured service.

### The Old Method of Measured Service

The first method brought out to meet this demand was the operator's keeping tally at central office (Peg Count). This was unsatisfactory, especially on party-line service, as it was found that in many cases when the user was asked his number he would give the number of some other subscriber who was on the same wire with the result that charges were often recorded to a subscriber who had not had service for same.

### The Fallacy of Central Office Meters

The attempt to supply measured service with the meters at the central office has met with but partial success, as they cannot be operated on party lines, and even with their restriction to private-line service they have not proven satisfactory. The fact that the subscriber cannot inspect his meter leads many to believe they are being overcharged.



# GRAY TELEPHONE PAY STATIONS

## W. T. Gentry of Atlanta, Georgia, Produces the First Register

Realizing the demand for a device that could be attached to any ordinary telephone which would perform this function, it remained for W. T. Gentry of Atlanta, Georgia, now president of The Southern Bell Telephone & Telegraph Company, to produce a device which would fill this want. In the spring of 1894, nearly twenty years ago, Mr. Gentry brought out the first telephone register, previous to which time nothing in the way of a practical device for such purpose had ever been produced. Completing his work on this register and obtaining United States Letters Patent on same, it was purchased by The Gray Telephone Pay Station Company and was the foundation on which we have successfully built.

## The Demand

With Gray Registers a service can be had as with the gas or water meter, requiring no expenditure on the part of the patron, other than for actual service rendered. The users only being required to sign a guarantee to use at least one call per day, or enough to justify the company in making the installation, it being fairly safe to assume that after the subscriber becomes accustomed to the telephone, the transaction becomes a mutual benefit.



## GRAY TELEPHONE PAY STATIONS



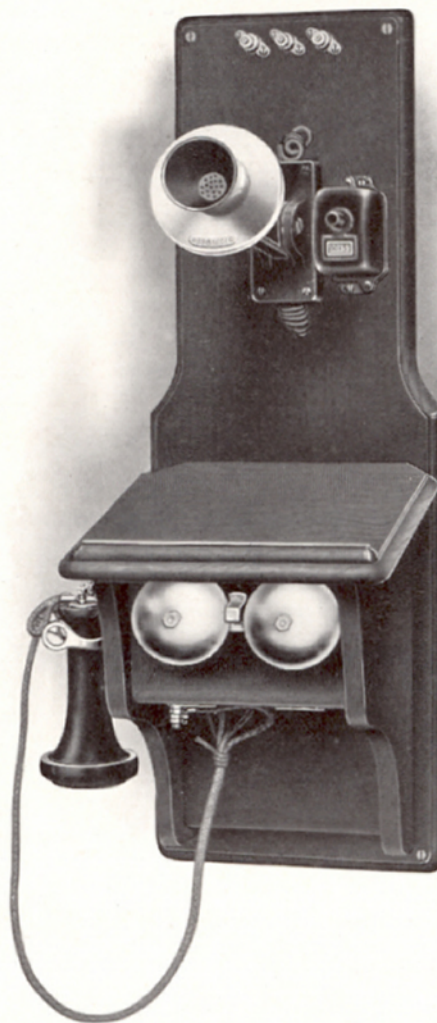
Number 3 Register attached to  
the regular desk set telephone.

Price \$3.00 each

Mounting plate 35 cents extra.

Number 3 Register mounted  
on the regular wall type  
telephone set.

Price \$3.00 each





# GRAY TELEPHONE PAY STATIONS

## Possibilities with Gray Registers

Gray Registers can be used to regulate the price of service on party lines having more or less subscribers. Thus on a four party line, each registration of the counter could represent five cents, while on lines carrying more subscribers, the contract price could be made in proportion to the service rendered. It will be observed that this plan contemplates the general introduction of the telephone into every home or store where it is difficult to get the parties to sign a regular exchange contract.

## The Automatic Signal

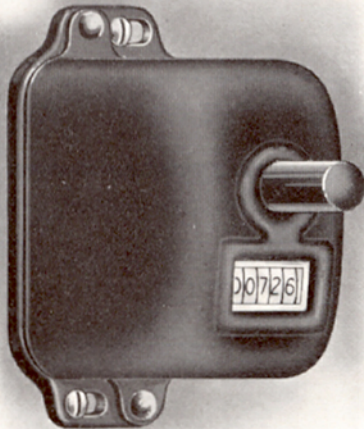
The signal in Gray Registers, whereby all vibration on the line is cut out immediately upon the release of the plunger, affords a saving of five seconds on each call.

With Gray Registers, no electrical connection either at subscriber's station or central office are required, they being entirely mechanical in action, and can be used on any ordinary telephone, of either wall or desk type in present use.

Where Gray Registers are attached the user has at all times a record before him which saves disputes and ill feeling.

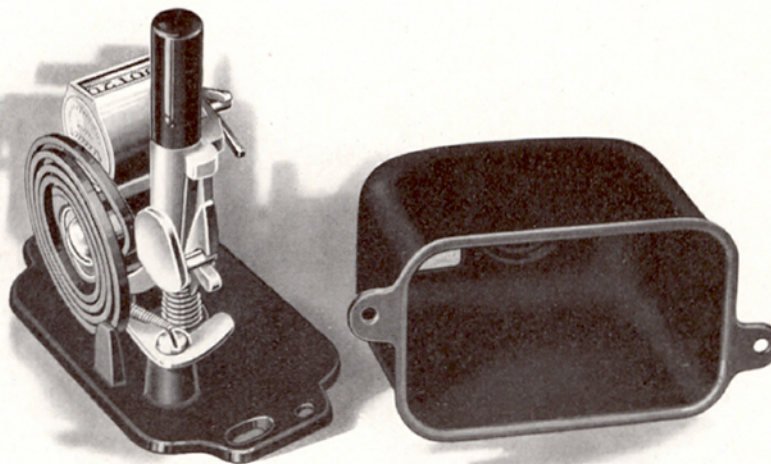


# GRAY TELEPHONE PAY STATIONS



This illustration shows our Number 3 Register complete.

Scale,  $\frac{3}{4}$  size.



This illustration shows our Number 3 Register in detail.



# GRAY TELEPHONE PAY STATIONS

## Operation with Gray Registers

When Gray Registers are installed, the operator answers a call in the usual way and upon finding the desired connection can be had, requests the calling party to give the signal before completing the call. The sound of the signal conveyed to the operator denotes that registration has been made in the meter attached to the telephone where the call originated. With Gray Registers in use charges are sure to be made to the party receiving service for same. The operator is relieved of all clerical work, each subscriber automatically performing this function when he sounds the signal.

## Gray Registers Regulate the Service

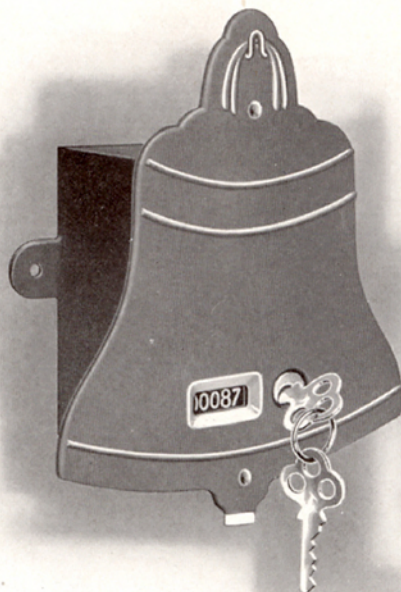
Should the calls from one subscriber run considerably higher than the others on the same party line, the register will indicate that such a subscriber should be put on a private wire, which immediately restores the service to normal condition.

The investment in the registers would be about the only thing that might make any company hesitate at all, and this is indeed small compared to the possibilities of the returns.

Over 100,000 of our registers in actual use is the best proof of their efficiency.



## GRAY TELEPHONE PAY STATIONS



Number 1 Register

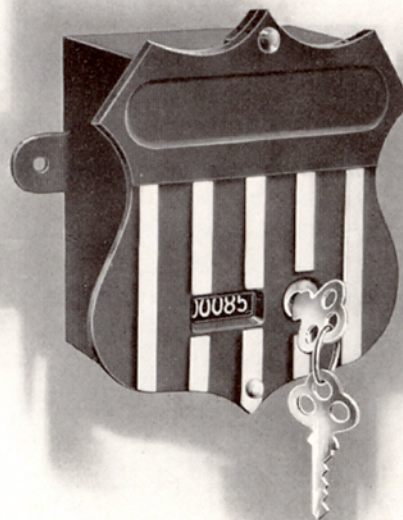
Price \$3.00 each

Finished in blue enamel with silver trimmings, very attractive.

Number 6 Register

Price \$3.00 each

Finished in red, white and blue enamel, very attractive.





# GRAY TELEPHONE PAY STATIONS

## Gray Registers Reduce Operator's Load

These registers will reduce the operator's load and improve the service on either private or party lines as they cut out all non-subscribers (dead-head) as well as reducing a large percentage of unnecessary calls.

## Comparisons

On the privilege of rental plan when everybody, subscribers and non-subscribers alike, use the service, each telephone on the line is a feeder of traffic to the extent of from ten to twenty calls per day, and as many in addition must be allotted to it because every call originated must be toward some other station in the exchange, unless it be a call for toll line. Suppose you equip such lines with Gray Registers, each user being required to register a certain charge to his account before the operator will make the connections. Now each telephone becomes a governor of traffic and admits only what is to be paid for with no charges if the party cannot be reached.

## Why Gray Registers Pay

It will be found on a four party line with Gray Registers attached, each subscriber agreeing to make at least one five-cent local call each day. A line so equipped pays a guarantee of not less than \$73.00 a year on four outgoing calls per day, and with all unnecessary and dead-head calls eliminated. Providing a most satisfactory service for the subscriber with a very profitable investment for the operating company.



**THE GRAY TELEPHONE PAY STATION CASE.**  
(Gray Patent No. 593,720, Nov. 16, 1897.)

**United States Circuit Court of Appeals**  
**FOR THE SEVENTH CIRCUIT.**

**THE GRAY TELEPHONE PAY STATION  
COMPANY,**

*Complainant,*

*v/s.*

**THE BAIRD MANUFACTURING  
COMPANY,**

*Defendant.*

**In Equity.**

**OPINION OF JUDGES GROSSCUP, BAKER AND KOHLSAAT FILED  
OCT. 5, 1909, SUSTAINING BROADLY THE GRAY PATENT  
AS PIONEER AND BASIC, AND HOLDING IT  
VALID AND INFRINGED.**

"Gray was the first to devise and construct a toll-station based upon the idea that the pay-box-signal should be communicated to the transmitter by means of resonant connection between the two. He took steps to secure the utmost freedom of vibration from one to the other. His means of doing so involved a firm or rigid relation of the one to the other—such as would afford the most complete vibratory medium. This would never have been achieved without the idea of vibratory conduction of the sound signal along the solid wood or metal located in the path of vibration between the signal and the transmitter. The accidental vibration growing out of the constructions of the prior art would never have developed reliable vibratory communication. Accuracy of enunciation is the end toward which telephony is striving. Every step in advance is a victory gained over the unknown. \* \* \* \* \* While the properties of wood and metal as conductors of sound were matters of general knowledge, it cannot be said that the harnessing of this natural principle to the telephonic service was known to be practicable or practical—else why the long continued employment of the clumsy and inconvenient deflectors and signal box openings. We deem invention conclusively established. \* \* \* \* \* That defendant's pay-station complete, is an infringement of the first patent in suit, we entertain no doubt. All three of the machines shown in the record involve the principles and construction of the Gray patent. Wherein there is any difference, the rule as to equivalents obtains."

(Quoted from the opinion)

**CHARLES K. OFFIELD,**  
OF COUNSEL.

**OFFIELD, TOWLE, GRAVES & OFFIELD**  
and  
**HARRIE E. HART,**  
*Solicitors for Complainant.*



# UNITED STATES PATENTS

## Patents Owned by The Gray Telephone Pay Station Company, Hartford, Conn., U. S. A.

408709	Aug. 13, 1889	682986	Sept. 17, 1901
426266	Apr. 22, 1890	723694	Mar. 24, 1903
448024	Mar. 10, 1891	725244	Apr. 14, 1903
454470	June 23, 1891	727653	May 12, 1903
462813	Nov. 10, 1891	733494	July 14, 1903
469649	Feb. 23, 1892	753411	Mar. 1, 1904
469650	Feb. 23, 1892	753412	Mar. 1, 1904
481903	Aug. 30, 1892	770377	Sept. 20, 1904
510535	Dec. 12, 1893	37283	Jan. 3, 1905
527759	Oct. 16, 1894	782150	Feb. 7, 1905
23825	Nov. 27, 1894	777525	Dec. 13, 1905
25128	Feb. 4, 1896	810491	Jan. 23, 1906
569195	Oct. 13, 1896	815107	Mar. 13, 1906
593720	Nov. 16, 1897	821877	May 29, 1906
593962	Nov. 16, 1897	872678	Dec. 3, 1907
596496	Jan. 4, 1898	894388	July 28, 1908
597556	Jan. 18, 1898	922389	Feb. 16, 1909
598610	Feb. 8, 1898	917629	Apr. 6, 1909
612330	Oct. 11, 1898	917742	Apr. 6, 1909
636134	Oct. 31, 1899	932036	Aug. 24, 1909
636135	Oct. 31, 1899	932403	Aug. 24, 1909
645917	Mar. 20, 1900	932404	Aug. 24, 1909
654112	July 17, 1900	992786	May 23, 1911
664346	Dec. 18, 1900		June 11, 1912

Other Patents Pending.

Foreign Patents—Canada, England, France,  
Norway and Sweden.



Letter Mailed on January 17th, 1911, by Each  
House to all Non-Associate Telephone Companies.



*Western Electric Company*

463 WEST STREET  
NEW YORK.

Jan. 17. 1911.

Gentlemen:

This company has recognized the validity and scope of the Gray Telephone Pay Station Patent No. 593,720, and has made settlement with the Gray Company for all pay stations of any alleged infringing type which have been sold by us. This includes our own No. 13 collector and the Baird and Livermore machines.

If you have in use any such pay stations which were purchased from us, and will let us know the number of each type, we shall be pleased to send you without charge a sufficient supply of Gray license plates to place thereon. The use of these plates will serve to protect you against any litigation on the part of the patentee.

It is our plan to carry in stock a supply of the more standard types of Gray pay station machines, from which prompt shipments can be made on such orders as you may place in the future. The attached booklet describes the types most generally used.

In accordance with our usual practice of protecting our customers we have paid a considerable sum in effecting the settlement outlined above and we earnestly hope that our action will serve to save you any embarrassment whatsoever.

Yours truly,

WESTERN ELECTRIC COMPANY.



# GRAY TELEPHONE PAY STATIONS

## INDEX

	Page		Page
Automatic System, Pay Stations for	60, 61	St. Louis Model, one slot, No. 28	46, 47
No. 100	60, 61	Street Corner	79, 85
No. 101	60, 61	Boxes	84, 85
Boston Model No. 27	52, 53	Posts	84, 85
Boxes, for Street Corners	84, 85	No. 15	80, 83
Bracket No. 139-A	13	Universal Type, No. 102, Multi-Coin	20, 23
Coin Chute, Cabinet Type	9	Wall Sets	See Cabinets
Coin Chute, Spiral, Portable Type	35	Washington Model, Multi-Coin	28, 33
Compact Type No. 23, Multi-Coin	24, 25	No. 23	28, 29
Compact Type No. 24, Portable	36, 37	No. 23-A	32, 33
Desk Sets	See Cabinets	No. 23-B	30, 31
Direction Cards, Ordering	62	Western Model No. 22, one slot	42, 43
Foreign Coins	78	No. 1 Register	93
Hotel Type, No. 23-C, Multi-Coin	26, 27	No. 1 Wall Cabinet, 5-slot	64, 65
Locks, Ordering	86	No. 2 Wall Cabinet, 5-slot	66, 67
Measured Service Registers	See Registers	No. 3 Register, Blue Bell, Key Type	89, 91
Multi-Coin	10, 33	No. 3 Wall Cabinet, 5-slot	68, 69
No. 23 Washington Model	28, 29	No. 4 Desk Cabinet, 5-slot	70, 71
No. 23-A Washington Model	32, 33	No. 5 Desk Cabinet, 5-slot	72, 73
No. 23-B Washington Model	30, 31	No. 6 Register, Shield, Key Type	93
No. 23-C Hotel Type	26, 27	No. 6 Wall Cabinet, 3-slot	74, 75
No. 23-D Compact Type	24, 25	No. 7 3-slot	50, 51
No. 50-A Prepay	10, 19	No. 7-A 3-slot, Large Money Drawer	50
No. 102 Universal Type	20, 23	No. 8-A New Model, 1-slot	44, 45
New Model No. 8-A, one slot	44, 45	No. 10 Shield Type, 3-slot	48, 49
Parts (Instructions for ordering)	151	No. 10-A Shield Type, 3-slot	48, 49
Patents	146, 150	No. 11 3-slot	54, 55
Portables	34, 41	No. 11-A 3-slot, Large Money Drawer	54
No. 13-A, Single Slot, 5c.	40, 41	No. 13-A Portable, single slot, 5c.	40, 41
No. 14 Multi-Coin	38, 39	No. 14 Portable, 3-slot	38, 39
No. 21 Multi-Coin	26, 37	No. 15 Street Corner, 3-slot	80, 83
No. 24 Compact Type	36, 37	No. 18 3-slot	56, 57
No. 28-A Single Slot, 10c.	40, 41	No. 18-A 3-slot, Large Money Drawer	56
Posts, for Street Corners	84, 85	No. 19 Wall Cabinet, 4-slot	76, 77
Registers, Measured Service	87, 94	No. 20 Shelf, 3-slot	58, 59
No. 1	93	No. 21 Portable, 3-slot	36, 37
No. 3	89, 91	No. 22 Western Model, 1-slot, 5c.	42, 43
No. 6	93	No. 23 Washington Model, 3-slot	28, 29
Sales Agents	4, 5	No. 23-A Washington Model, 3-slot	32, 33
Shelf Type No. 20, Postpay	58, 59	No. 23-B Washington Model, 3-slot	30, 31
Shelf Type No. 50-A Prepay	10, 19	No. 23-C Hotel Type, 3-slot	26, 27
Shield Type	48, 49	No. 23-D Compact Type, 3-slot	24, 25
No. 10	48, 49	No. 24 Portable, 3-slot	36, 37
No. 10-A	48, 49	No. 27 Boston Model, 3-slot, Large Money Drawer	52, 53
Single Slot	40, 47	No. 28 St. Louis Model, 1-slot, 10c.	46, 47
No. 8-A New Model	44, 45	No. 28-A Portable, single slot, 10c.	40, 41
No. 13-A Portable	40, 41	No. 50-A Multi-Coin Prepay	10, 19
No. 28-A Portable	40, 41	No. 100 Wall Type Automatic, 3-slot	60, 61
No. 28 St. Louis Model	46, 47	No. 101 Desk Type Automatic, 3-slot	60, 61
No. 22 Western Model	42, 43	No. 102 Universal Type, 3-slot	20, 23
Spiral Coin Chute	35	No. 139-A Bracket for Shelf Mounting	13