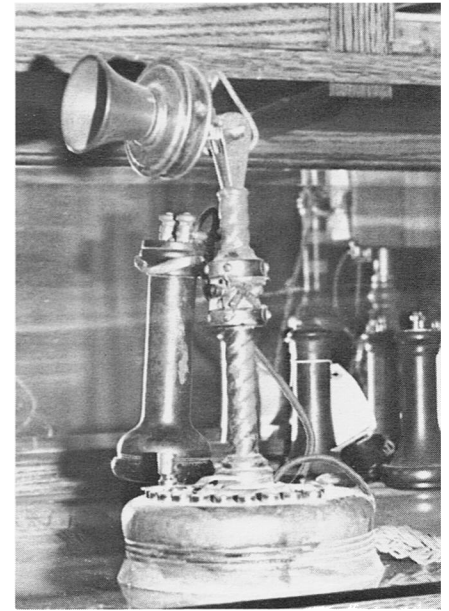


(left) 1898 Stromberg Carlson "oil can" type.

(middle) 1894 Stromberg Carlson pedestal type.

(right) 1901 Stromberg Carlson

(D. Golden Collection)

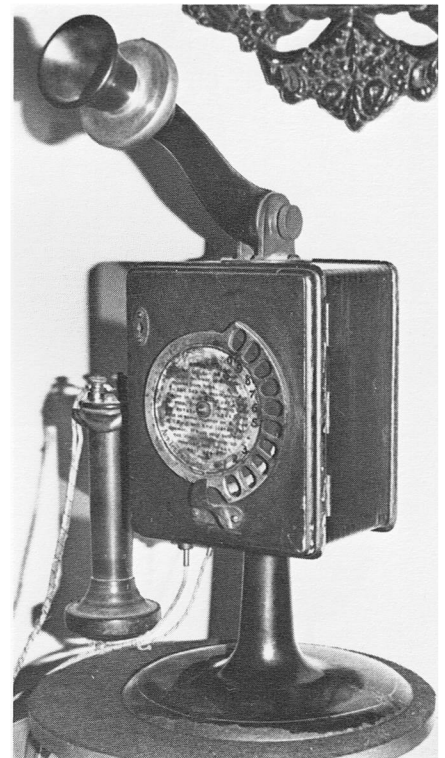


1897 DeVeau with a walnut base. (D. Golden Collection)



1898 Stromberg Carlson "oil can" type.

(W. Elsasser Collection)



1898 Strowger Automatic pedestal telephone.

(D. Golden Collection)