

BELL SYSTEM PRACTICES
Station Installation and Maintenance

SECTION C64.431
Issue 1, 3-2-36
AT&T Co. Prov. Std.

TELEPHONE BOOTHS—OPEN TYPE INSTALLATION

(Reference Section for C52.251)

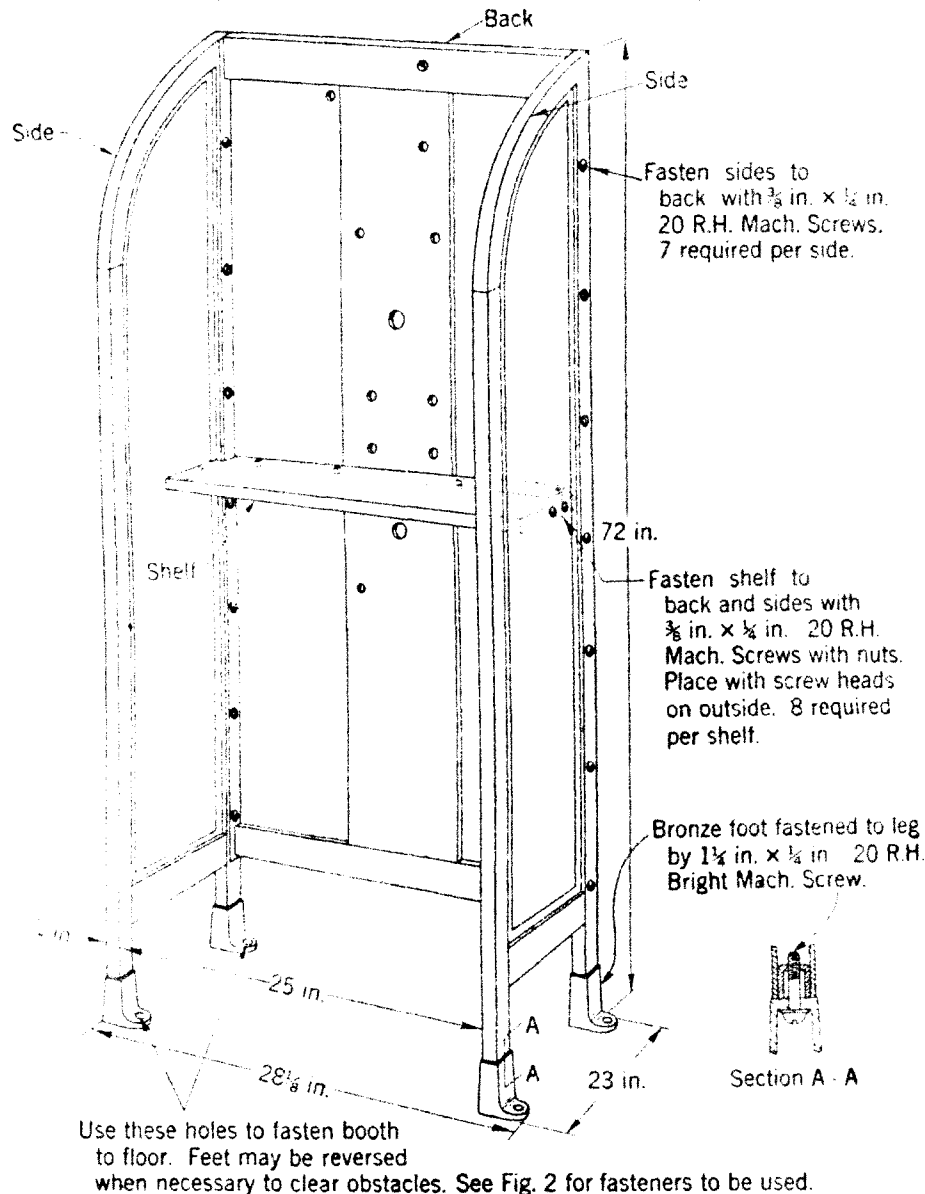


Fig. 1—Single Installation.

C64.431

Page 1

TELEPHONE
BOOTH
OPEN TYPE
INSTALLATION

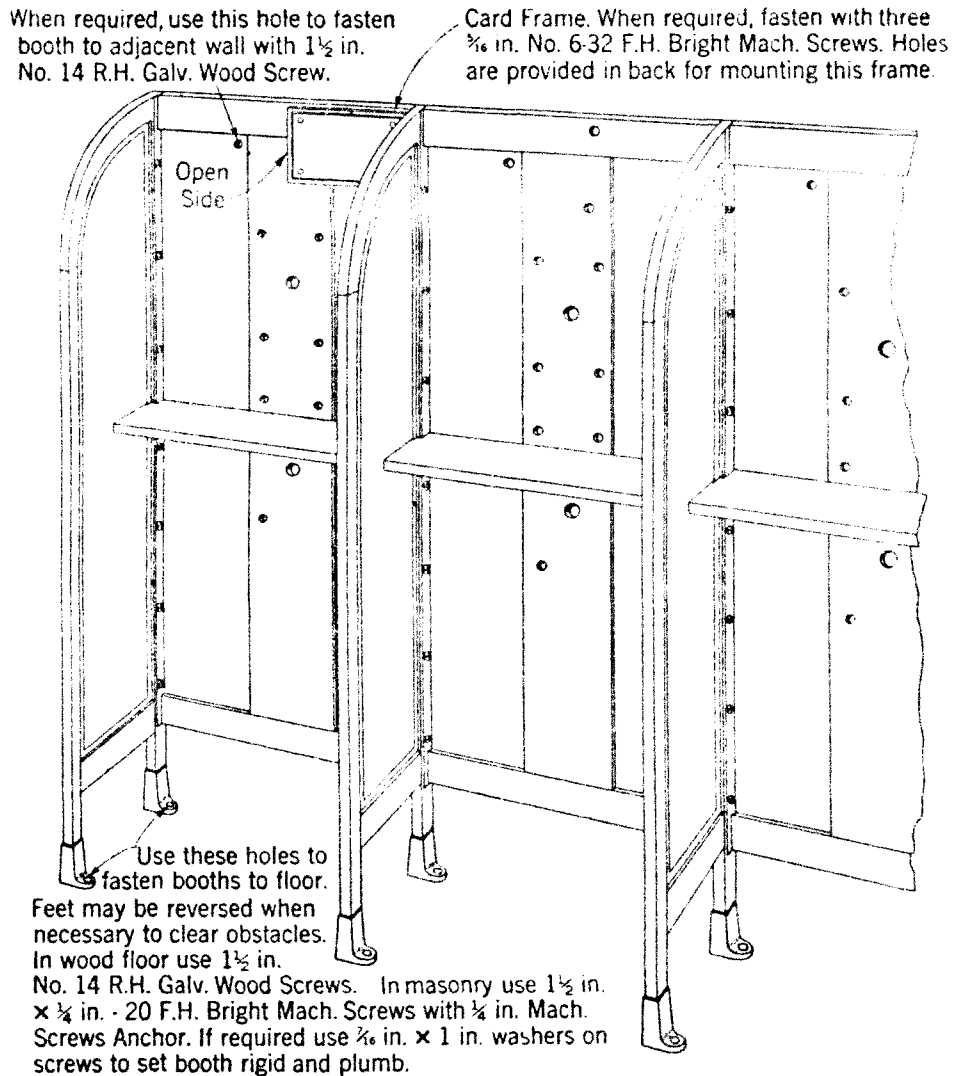


Fig. 2—Multiple Installation.

1. ASSEMBLING AND LOCATING BOOTHS

1.01 Assemble booths as indicated in Figs. 1 and 2.

1.02 Locate booths as specified on service orders and, in general as specified for folding door booths in Sections C64.411 and so that light conditions in booth will be favorable both day and night.