

BELL SYSTEM PRACTICES
Station Installation and Maintenance

SECTION C44.103
Issue 3, July, 1953
AT&T Co Standard

TELEPHONE BOOTHS

5, 6, 10 AND 11 TYPES

DESCRIPTION

1. GENERAL

1.01 This section is reissued to delete the supplies listing, include information concerning the 10 and 11-type booths, delete information concerning the 1, 2 and 7-type booths, and make other minor changes. Marginal arrows are omitted.

1.02 The 10 and 11-type booths supersedes the 5 and 6-type booths for all general purposes. Where conditions permit, existing stocks of 5 and 6-type booths can be used in the original or modified form, in accordance with local regulations.

1.03 Booths are furnished equipped with light fixtures intended for use in connection with ordinary lighting voltages (105-125) unless the order specifically states that no light fixture is required.

1.04 Booths are equipped with a lead-in cable and/or an interconnecting cable on the right or left side as specified on the order. Directory lights on the right or left side are also provided when specified. The 10 and 11-type booths will come equipped with the KS-14125 (List) blower when specified on the order. Refer to Fig. 1 and specify which arrangement is desired. (Directory lights are frequently added in the field so as to avoid damage in transportation.)

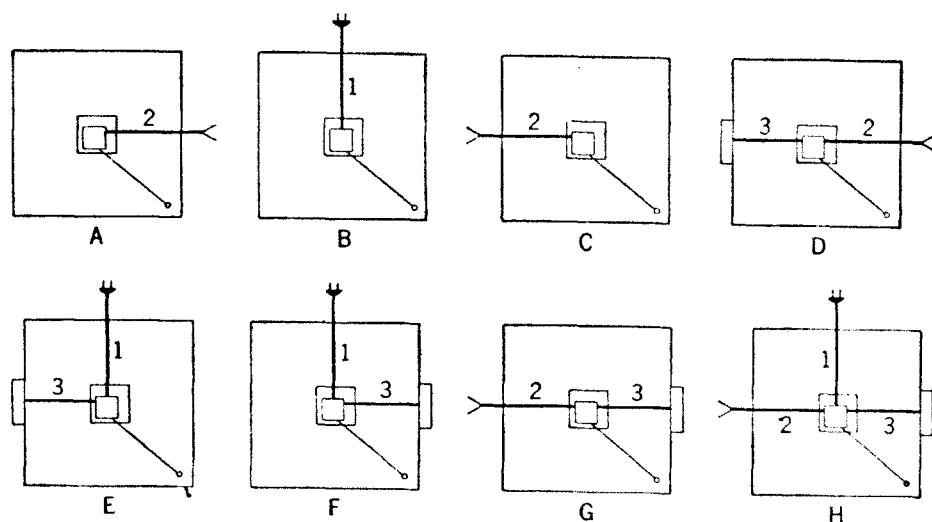


Fig. 1—Diagrams of Cable Furnished on Booths

Explanation of Fig. 1

- (A) Interconnecting cable (2) on right.
- (B) Power cable (1).
- (C) Interconnecting cable (2) on left.
- (D) Interconnecting cable (2) on right and directory light and cable (3) on left.
- (E) Power cable (1) with directory light and cable (3) on left.
- (F) Power cable (1) with directory light and cable (3) on right.
- (G) Interconnecting cable (2) on left, directory light and cable (3) on right.
- (H) Power cable (1), interconnecting cable (2) on left and directory light and cable (3) on right.

1.05 To determine the correct cable to be used with each booth, consult the section listed as "Cables" in Section C44.131.

2. DESCRIPTION

(A) 10 and 11-Type Booths

2.01 The 11-type booth is shown in Fig. 2. Structurally the 10 and 11-type booths are similar. They differ, however, in that the 11-type booths are equipped with a seat whereas the 10-type are not and the shelf and backboard are mounted correspondingly higher in the 10-type booths.

2.02 These booths are manufactured with softwood backs and plywood roofs and when specified, are furnished equipped with the back panels listed in Table 1. All 10 and 11-type booths are furnished with full length glass panels in the doors and when so ordered may be obtained equipped with a blower for ventilating. When the blower is not used an apparatus blank is placed to close the hole provided in the ceiling for the blower.

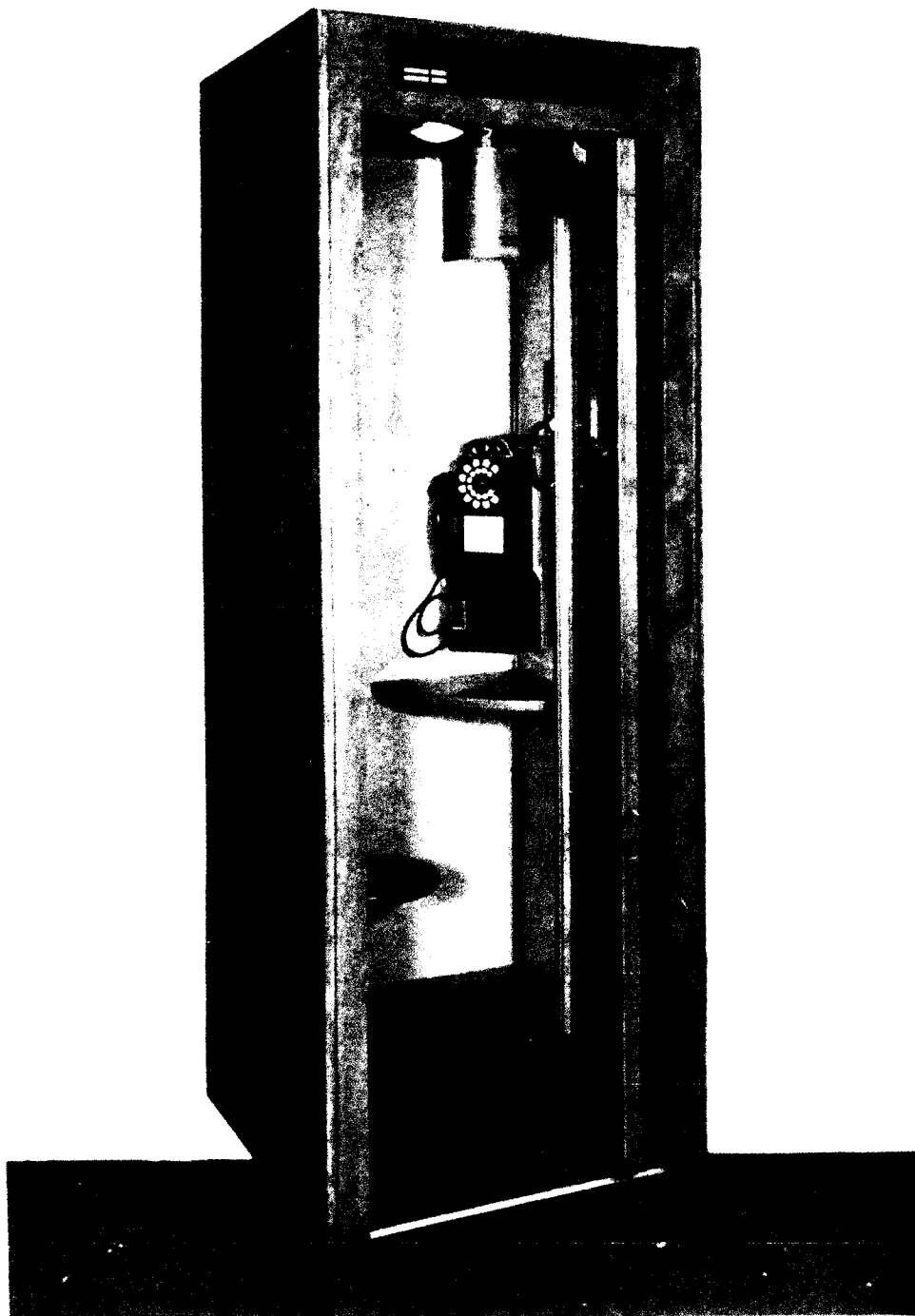


Fig. 2—11-Type Booth

Note: If 62-type panel is applied on back, over-all depth of booth will be 31-1/8 inches instead of 30-1/2 inches.

TABLE 1

Booth Code		Finish	Material of Front	*End Panel	Sepa-rator	*Back Panel
10B	11B	Med. Mahog.	Birch	61B	1A	62B
10D	11D	Oak	Oak	61D	1C	62D
10F	11F	Dark Mahog.	Birch	61F	1E	62F
10H	11H	Walnut	Birch	61H	1G	62H
10P	11P	Unfinished	Oak	61P	1N	62P
10T	11T	Unfinished	Birch	61T	1T	62T
10U	11U	Oak	Birch	61U	1U	62U

* These end panels and back panels are the flush type without the recessed paneling provided on the earlier 51 and 60-type panels listed in Table 2.

2.03 End panels and separators are not included under booth codes and must be ordered separately. End panels will be drilled for directory light only when so ordered, specify right or left side as required. Back panel will be furnished in place when so specified on the order.

2.04 Except for the 53-type (unfinished) panel the special back panels described in 2.10 as substitutes for the back regularly furnished with 5 and 6-type booths are not available for use with 10 and 11-type booths. Where required, finish should be arranged for locally.

2.05 Although the booth is furnished with a light fixture, a 40-watt lamp must be provided separately. Where a booth is to be equipped with a directory light, a 2D light fixture and a 25-watt lamp should be ordered separately. The 4A light fixture furnished with these booths is equipped with a directive type lens which in combination with the 40-watt lamp provides considerably more light intensity at the coin collector and dial than is afforded by a similar lamp in the light fixtures of earlier type booths. A grille surrounds the lens and serves as an exhaust path for the air circulated by the blower. The faceplate holding the lens is hinged and secured in place with a captive screw. Access to the screw is through a 9/32-inch hole in the faceplate. Lamp replacement is accomplished by opening the faceplate. With the faceplate open access is also provided to the 42-type connecting block attached to the light fixture for terminating telephone wiring to the booth. The booths are equipped with the necessary telephone wires for the coin collector and subscriber set. The receptacle box for the fixture in addition to the lamp bulb and socket also contains the mercury switch for operating the

light and blower under control of the door and a terminal strip having four pairs of screw terminals wired in parallel for terminating the power, interconnecting and directory light cables as required.

2.06 The 10 and 11-type booths are furnished with a 167A-32 backboard and an 18D shelf both having a beige colored porcelain finish to harmonize with the lining of the booth. In addition the 11-type is furnished with a 101U seat. The wooden portion of the seat is russet in color and the bracket is beige enamel to match the finish of the booth lining. If a booth with a seat is required at a location having a 10-type (or earlier 5-type) booth in service, consider replacing the booth with an 11-type (or 6-type). The work involved in installing a seat and lowering the backboard and shelf on the subscriber's premises is so extensive that this practice should, if possible, be avoided. The ceiling is plywood with a beige wrinkled finish and the floor covering is of rubber, russet with cream mottling in color.

(B) 5 and 6-Type Booths

2.07 Manufacture of the 5 and 6-type booths and 51 and 60-type panels listed in Table 2 has been discontinued. The 6-type booth is shown in Fig. 3. Structurally the 5 and 6-type booths are similar except that the 6-type is equipped with a seat whereas the 5-type is not and the shelf and backboards are mounted correspondingly higher in the 5-type booth. Prior to the introduction of the 10 and 11-type booths a limit of 5 and 6-type booths equipped with all the features of the 10 and 11-type booths except for linings and associated moldings were produced. These were identified by the suffix B added to the 5 and 6-type codes listed in Table 2.

2.08 The 5 and 6-type booths have softwood backs and roofs stained in dark mahogany. If the booths are to be installed with their backs exposed 60-type (available from recovery stock) or 62-type panels of the corresponding color and finish must be ordered separately and applied to the booths over the softwood backs.



Fig. 3—6-Type Booth

Note: If 60-type panel is applied on back the over-all depth will be 31-1/8 inches instead of 30-1/2 inches.

C44.103

Page 7

TELEPHONE BOOTHS
5, 6, 10 AND 11 TYPES
DESCRIPTION

TABLE 2
5 and 6-Type Booths

Booth Code		Finish	Material of Front	End Panel	Sepa-rator	Back Panel
5B	6B	Med. Mahog.	*	51A	1A	60A
5D	6D	Oak	Oak	51C	1C	60C
5F	6F	Dark Mahog.	*	51E	1E	60E
5H	6H	Walnut	*	51G	1G	60G
5K	6K	Walnut	Walnut	51J	1J	60J
5M	6M	Unfinished	*	51L	1L	60L
5P	6P	Unfinished	Oak	51N	1N	60N
5S	6S	Unfinished	Walnut	51R	1R	60R
5T	6T	Unfinished	*	51T	1T	60T
5U	6U	Med. Oak	Birch	51U	1U	60U

* Birch, red gum or mahogany.

2.09 End panels and separators are not included under the booth code and must be ordered separately. End panels will be drilled for the directory light only when so ordered. Specify right or left side as required.

2.10 Additional back panels are listed below which may be available from recovery stocks as substitutions for the backs which are regularly part of the 5 and 6-type booths. These panels have either small rear exit doors or glass panels and are for use where it is desired to minimize the obstruction of light or to gain access to show windows, plumbing fixtures, etc., which otherwise would be obstructed. These panels are not included under booth code number, and therefore, must be ordered separately. Installation of these panels on the premises of the public telephone agent is impractical and where booths of this type are required they should be ordered so equipped.

(a) 52A, 52C, 52E, 52G, 52L, 52N and 52R panels. Back panels having small door without glass for use on 5-type booths only.

(b) 53A, 53C, 53E, 53G, 53L, 53N and 53R panels. Back panels having small door with glass in the upper section. For use on 5-type booths only.

(c) 54A, 54C, 54E, 54G, 54L, 54N and 54R panels. Back panels having glass windows for use on either 5 or 6-type booths.

2.11 The code letter of each panel indicates the same woodwork and finish that is standard on the 51-type panels (see Table 2) having the corresponding code letter. When the panels are ordered separately for the conversion of a booth at the local shop, cove moldings and attaching screws are furnished with the panels. The 52 and 53-type panels are equipped with lock and key and are furnished with a 14T shelf which is required in booths equipped with these panels. A shelf is not furnished with the 54-type panels since booths are already equipped with a shelf usable with these panels.

2.12 Where a booth is equipped with a light fixture a 40-watt lamp should be provided separately and where a booth is to be equipped with a directory light, the 2B or 2D light fixture and a 25-watt lamp should be ordered separately. For the 2B light fixture, cable assembly P-385425 should be ordered separately. This cable is for connecting this fixture to the booth light fixture. The 2D light fixture includes a cable spliced to it. If a key for locking the lamp in the light fixtures is required a 544A key should be ordered separately.

2.13 The 5 and 6-type booths are furnished with an 18-type shelf and 167A-3 backboard. In addition the 6-type booths are furnished with a 101T seat. If a booth with a seat is required at a location having a 5-type booth in service, consider replacing the booth with 6 or 11-type booth as the work involved in installing a seat and lowering the backboard and shelf is not recommended on subscriber's premises and should, if possible, be avoided.

2.14 The 3 or 1-type light fixtures furnished with these booths include the switch for operating the booth light and fan under control of the door. The 42-type connecting block for telephone wiring to booth is attached to the 3-type light fixture. Lamp replacement is accomplished by unlocking the faceplate of the light fixture with the 544A key. Access to the 42-type connecting block and terminals for power and interconnecting cable is provided when the faceplate is opened. The booths are also equipped with the necessary wires for the coin collector and subscriber set.

2.15 If better illumination of the coin collector and dial in a 5 or 6-type booth than normally provided is desired the 4A light fixture with directive lens is interchangeable with the 3-type fixture and may be substituted therefor. When a fan is required the booth may be ordered equipped with a KS-8164 ventilator.