

## TELEPHONE SETS—750 SERIES

### IDENTIFICATION, INSTALLATION, AND ASSEMBLY OF PARTS

#### 1.00 GENERAL

- 1.01 This section is reissued to include information for 751A-58 and 751B-60 telephone set.
- 1.02 Due to extensive changes marginal arrows have been omitted.
- 1.03 The 750-type telephone sets are common-battery dial telephones electrically equivalent to the 500-series sets. They are panel telephones designed for recessed mounting in a 113-type apparatus box.
- 1.04 The component parts of these sets are mounted on a steel panel which is then se-

cured to a 113-type apparatus box by four machine screws. A metal mat and retainer frame cover the panel and give a finished appearance. Fig. 1 and 2 illustrate the two models.

- 1.05 Figure 4, 5, and 12 are pictures of shop model equipment. Production models may vary slightly.

#### 2.00 IDENTIFICATION

- 2.01 The 750A-58 and 750B-60 telephone sets are the basic panel telephones. They accommodate one CO or PBX line and differ only in the



Fig. 1 — 750-Type Telephone Set

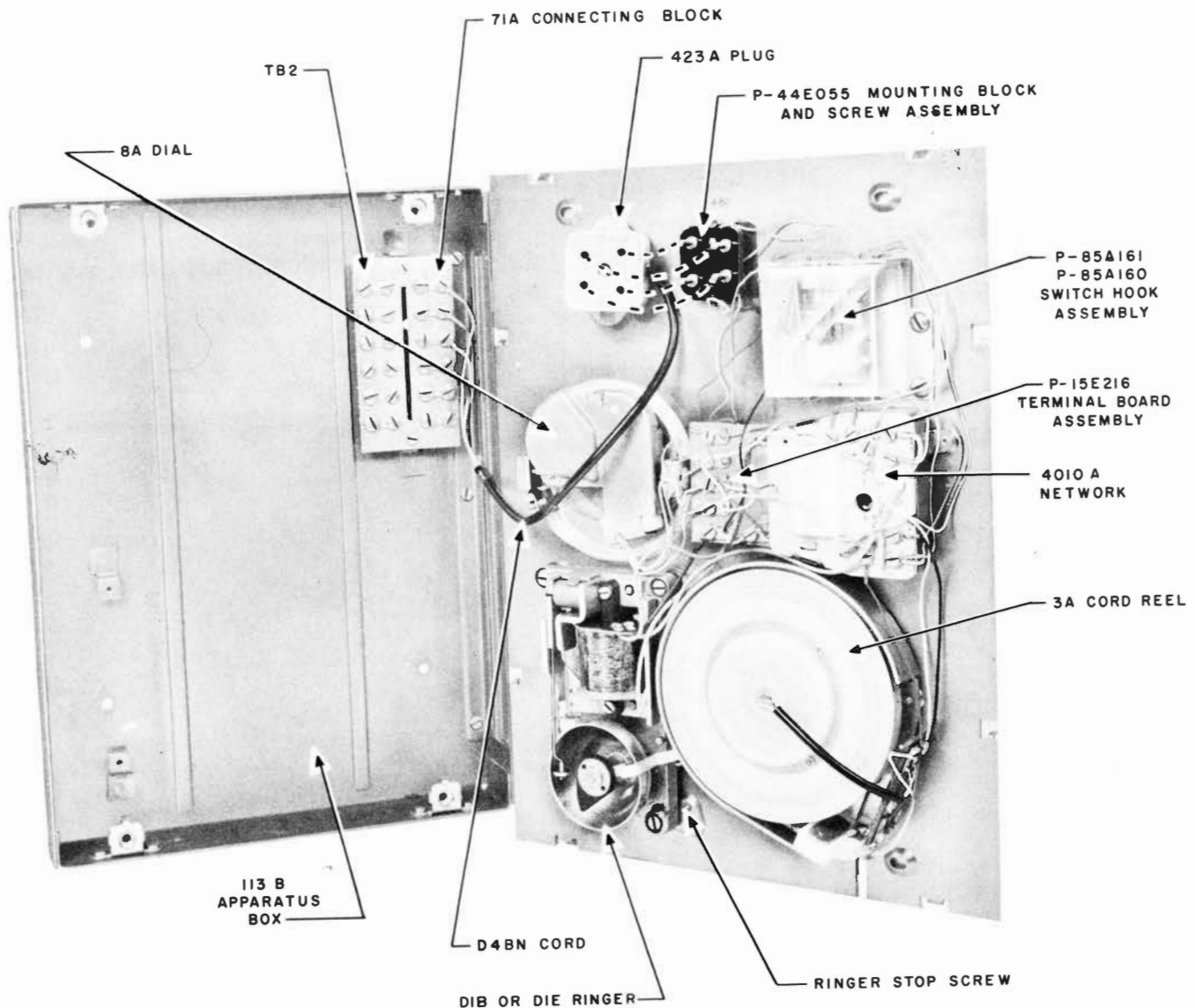


Fig. 2 — 751-Type Telephone Set

color of the handset, switch arm, mat, and mat frame. Table A lists the component parts of these sets. Fig. 3 and 4 show the arrangement of components on the steel panel.

**2.02** The 751A-58 and 751B-60 telephone sets are similar to the 750-type sets. The following additional features are provided:

- Two-line pick-up key (Two CO or PBX lines or one CO or PBX line and 1A HOME INTERPHONE line.)
- Mounting holes in panel for 1A HOME INTERPHONE microphone. The microphone is not provided as part of the telephone set and must be ordered separately as 664B transmitter.



**Fig. 3 — 750A and 750B Telephone Set, Components on Panel, Rear View**

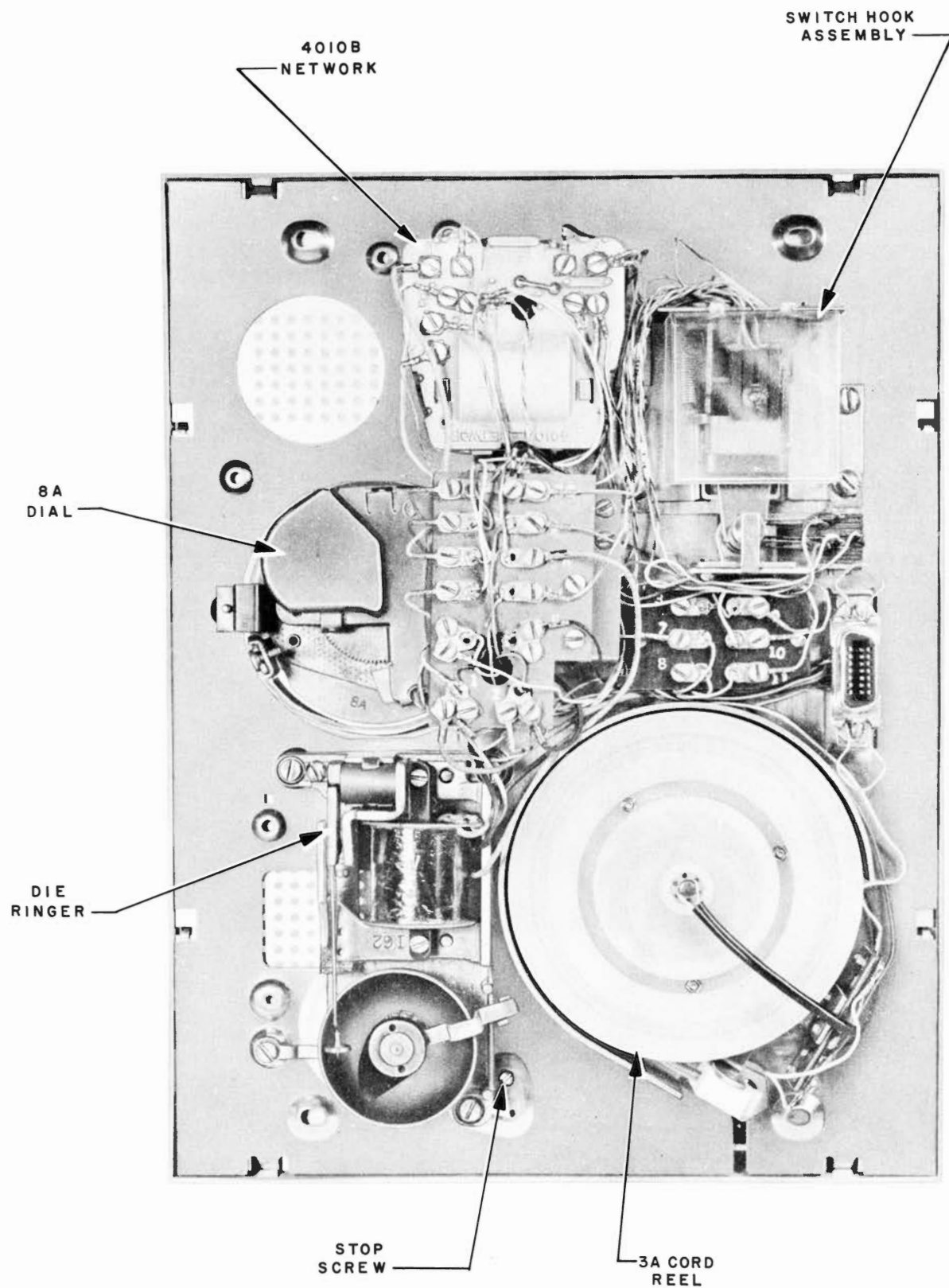


Fig. 4—751-Type Telephone Set, Components on Panel, Rear View

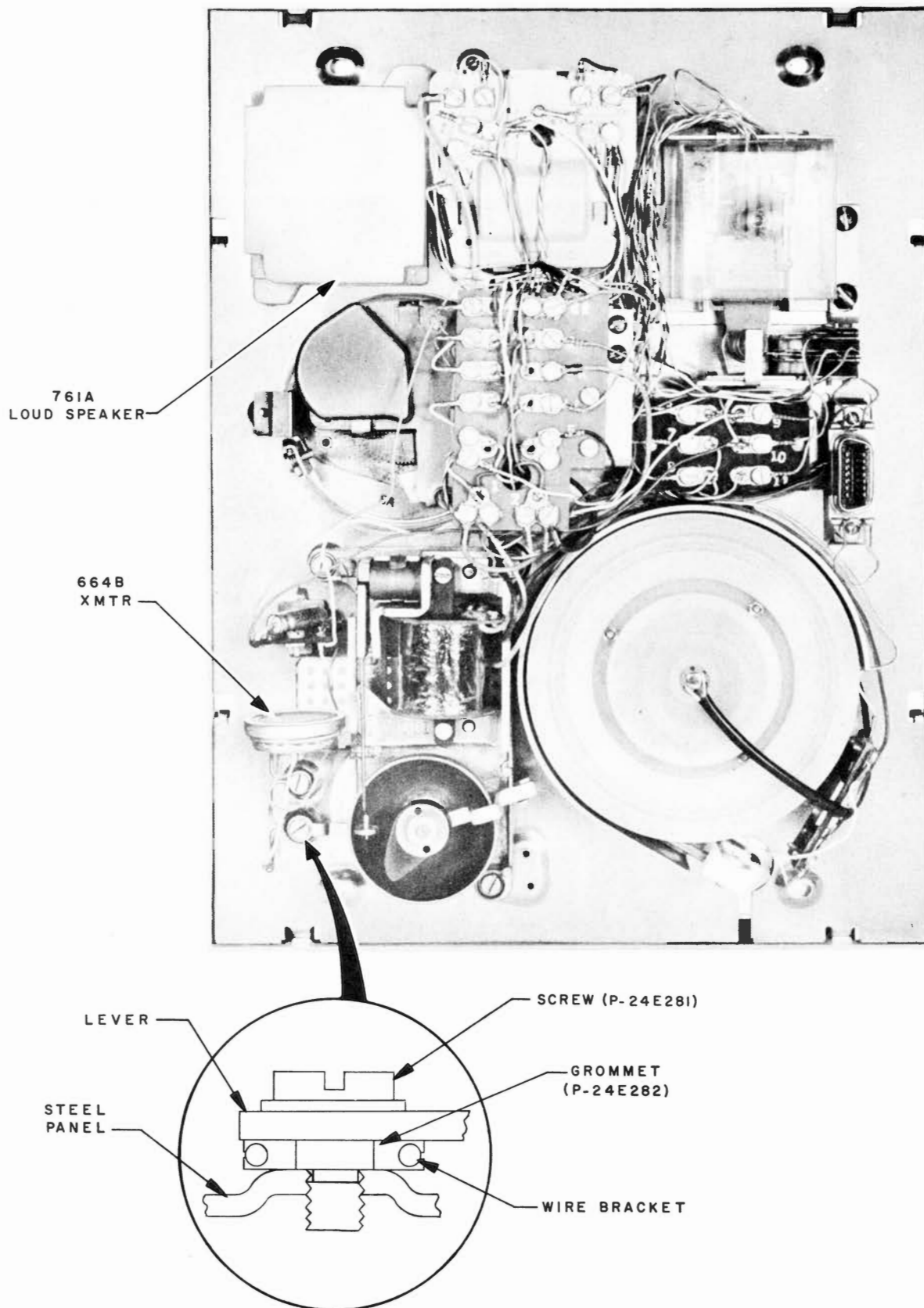


Fig. 5 — 751-Type Telephone Set With 1A Home Interphone, Components on Panel, Rear View

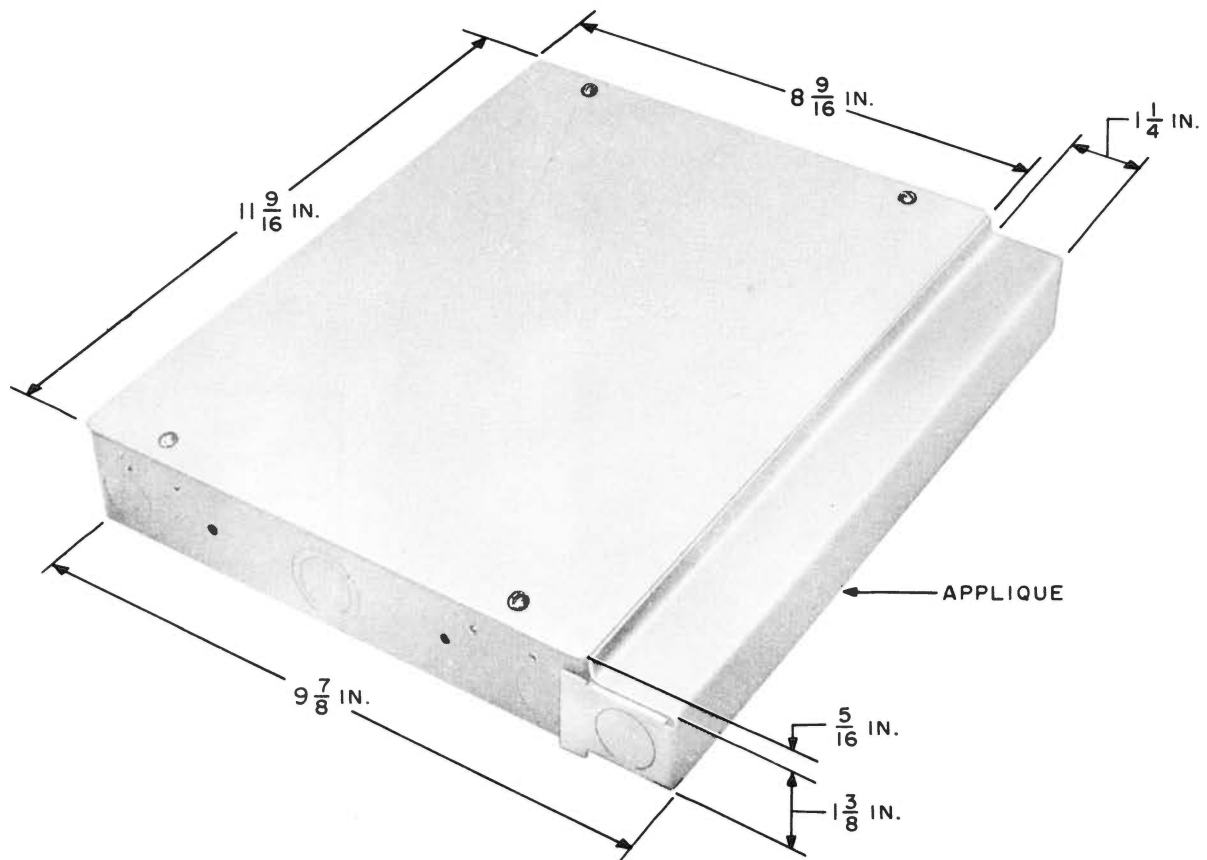
- Mounting holes in panel for 1A HOME INTERPHONE loudspeaker. The loudspeaker must be ordered separately as 761A loudspeaker.
- Exclusion Key (Hold key when set is used with 1A HOME INTERPHONE.)

**2.03** Table A lists the component parts of these sets and Fig. 4 and 5 show the arrangement of the components on the steel panel.

**2.04** Two 113-type apparatus boxes are available for use with these sets. The 113A apparatus box is 8-9/16 inches wide, 11-9/16 inches high, and 1-5/8 inches deep. An applique unit measuring 1-1/4 inch by 11-9/16 inch by 1-3/8 inch is attached to the box to provide cable storage space. The 113B apparatus box is identical to the 113A except that it does not have the applique. It is used where additional cable storage space is not required. Fig. 6 and 7 show these units.

**TABLE A**  
**COMPONENT PARTS**

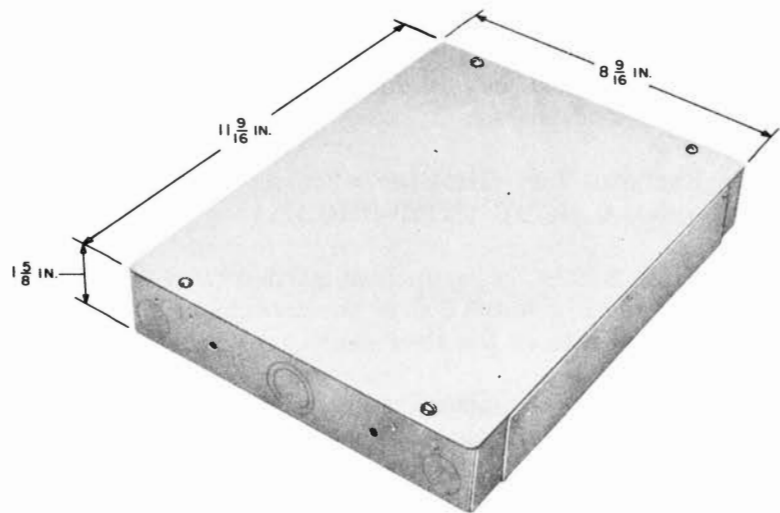
|                        |                     |                   |                     |                   |
|------------------------|---------------------|-------------------|---------------------|-------------------|
| Telephone Set          | 750A58              | 750B60            | 751A58              | 751B60            |
| Handset                | G3K58               | G3K60             | G3K58               | G3K60             |
| Dial                   | 8A                  |                   |                     |                   |
| Ringer                 | D1B or D1E          | D1B or D1E        | D1E                 | D1E               |
| Network                | 4010A or 4010B      | 4010A or 4010B    | 4010B               | 4010B             |
| Cord Reel              | 3A                  |                   |                     |                   |
| Mounting Cord Assembly | D4BN3               | D4BN3             | D12E                | D12E              |
| Switch Assembly        | P-85A161            | P-85A160          | P-89A161            | P-89A160          |
| Knob Ringer Adjusting  | P-15E475            |                   |                     |                   |
| Mat                    | P-15E432 (aluminum) | P-15E433 (copper) | P-24E119 (aluminum) | P-24E118 (copper) |
| Mat Frame              | P-84A261            | P-84A260          | P-84A261            | P-84A260          |
| Microphone             | —                   | —                 | 664B Transmitter    | 664B Transmitter  |
| Loudspeaker            | —                   | —                 | 761A                | 761A              |



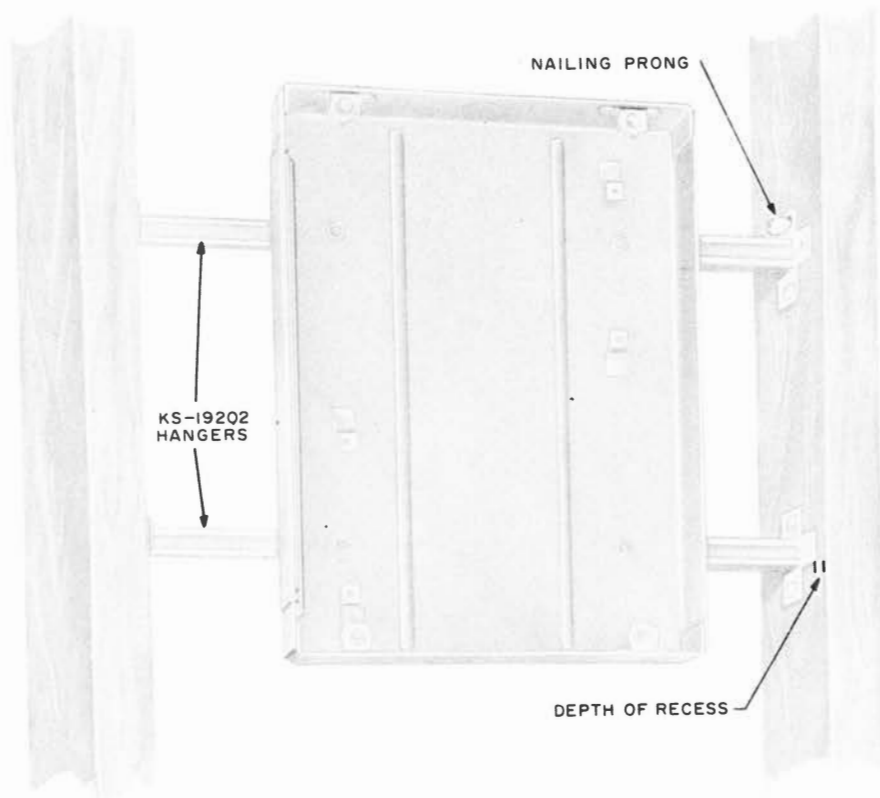
**Fig. 6 — 113A Apparatus Box**

**3.00 INSTALLATION**

**3.01** The 113-type apparatus box is designed primarily for installation on wall or partition studdings before the dry wall or plaster wall is placed. Fig. 8 and Table B should be used as a guide for these installations using the KS-19202 hangers. (See Fig. 11.)



**Fig. 7 — 113B Apparatus Box**



**Fig. 8 — Installation of KS-19202 Hangers and 113-Type Apparatus Box**

**TABLE B**

**DEPTH KS-19202 HANGERS  
RECESSED**

| Wall Thickness | Depth of Recess* |
|----------------|------------------|
| 3/8"           | 1/4"             |
| 1/2"           | 1/8"             |
| 5/8"           | Flush            |

\* Measurements are from face of wall stud to extreme front edge of tabs (see Fig. 8).

**3.02** The apparatus box may also be fastened directly to the studding with screws or nails. The box should project from the face of the studding or subwall only enough to be flush with the finished wall. (See Fig. 9 and Table C.)

**3.03** The apparatus box may be installed in existing frame construction as shown in Fig. 10. The B-554399 clip, B-554398 stop, and P-181248 screws are not furnished with the apparatus boxes. They must be ordered separately as required.

TABLE C

PROJECTION DIMENSIONS

| Wall Thickness             | Projection |
|----------------------------|------------|
| 3/8 Dry Wall               | 13/32"     |
| 1/2 Dry Wall               | 17/32"     |
| 5/8 Dry Wall<br>or Plaster | 21/32"     |

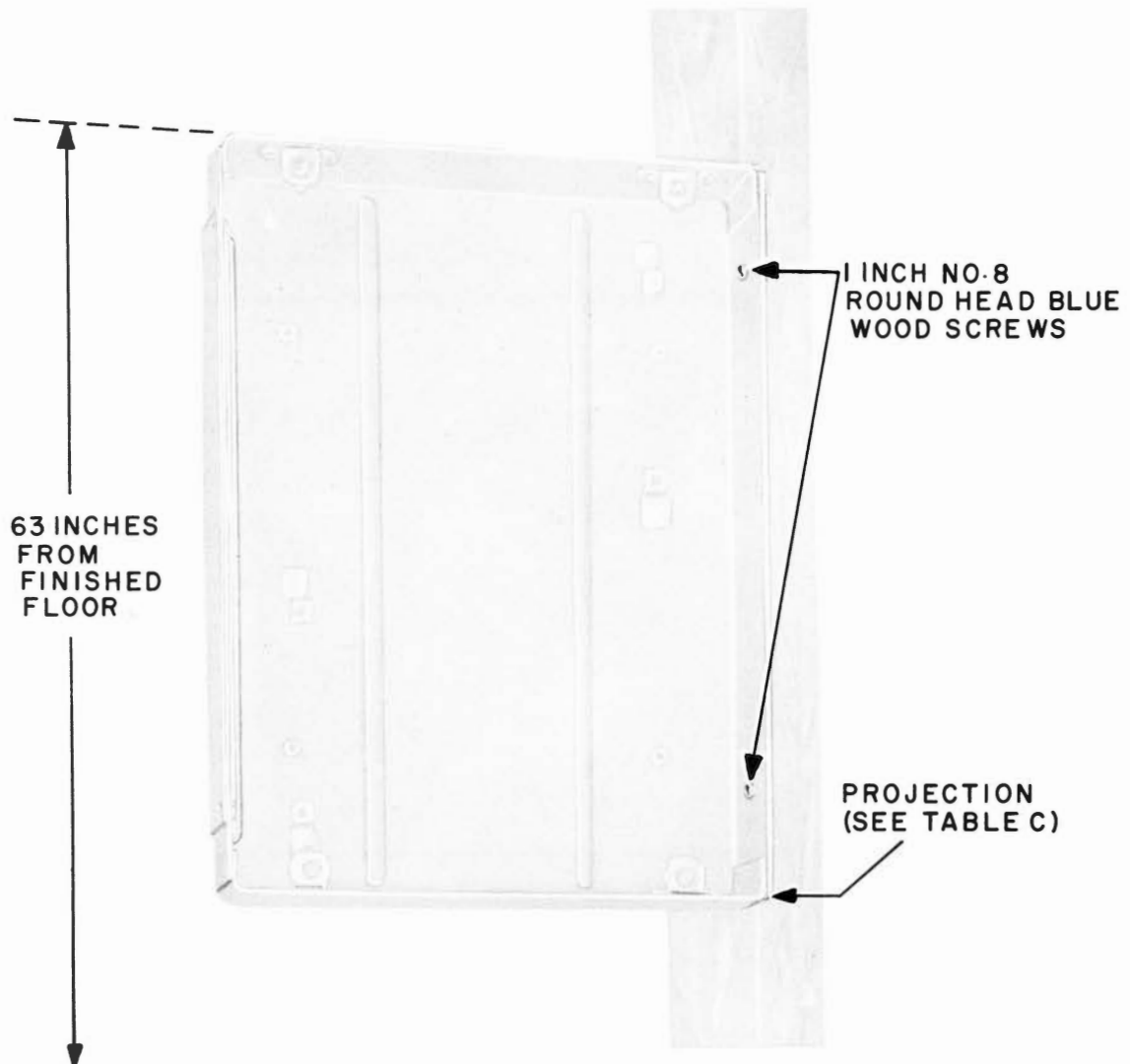


Fig. 9 — 113-Type Apparatus Box Mounted on Wall Stud

**Note 1:** Notch edge of wall opening at both top and bottom to provide clearance for heads of screws.

**Note 2:** After determining wall thickness, bend tabs X on clips to meet dimension B before inserting.

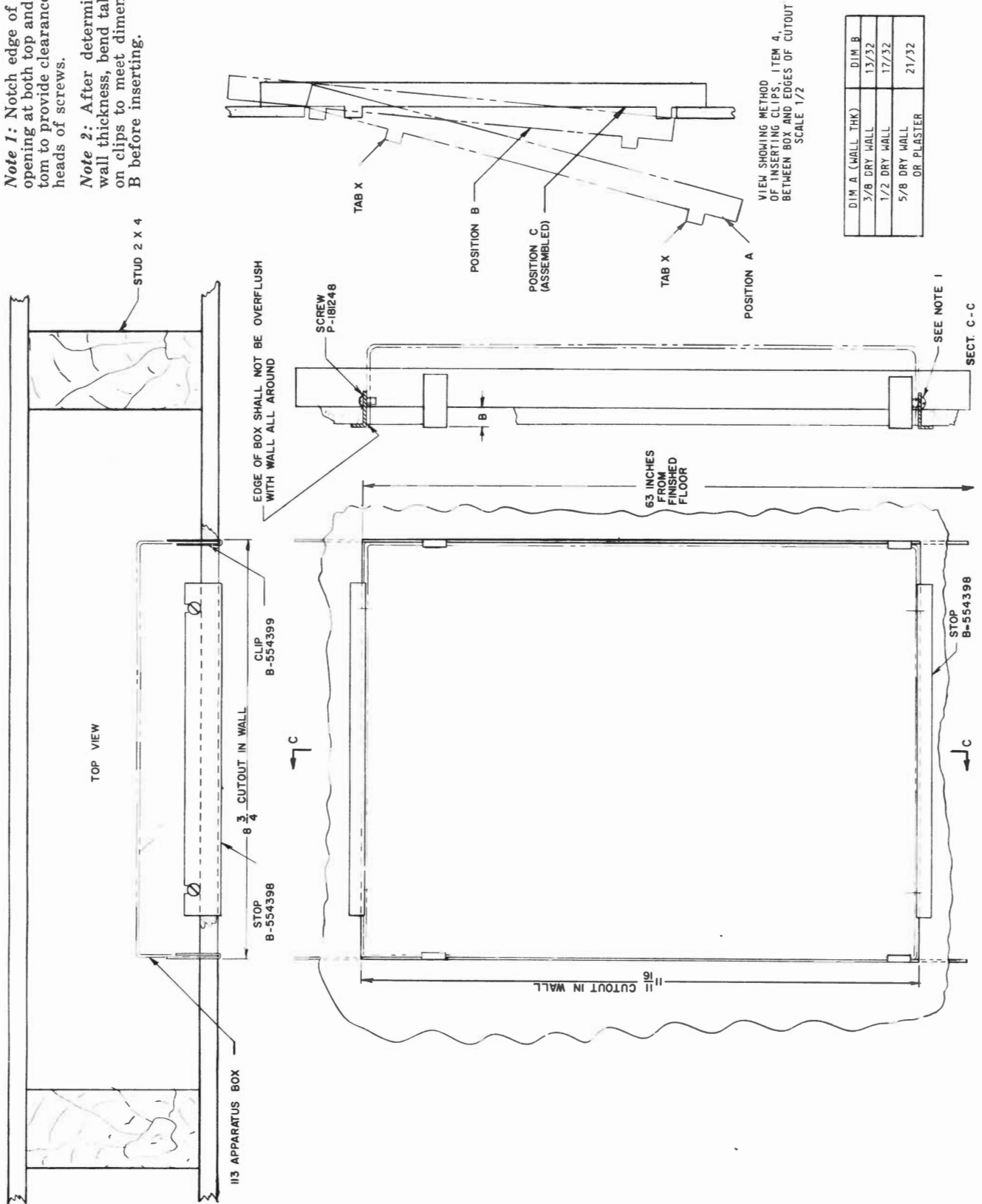


Fig. 10—Installation Details for Existing Frame Wall



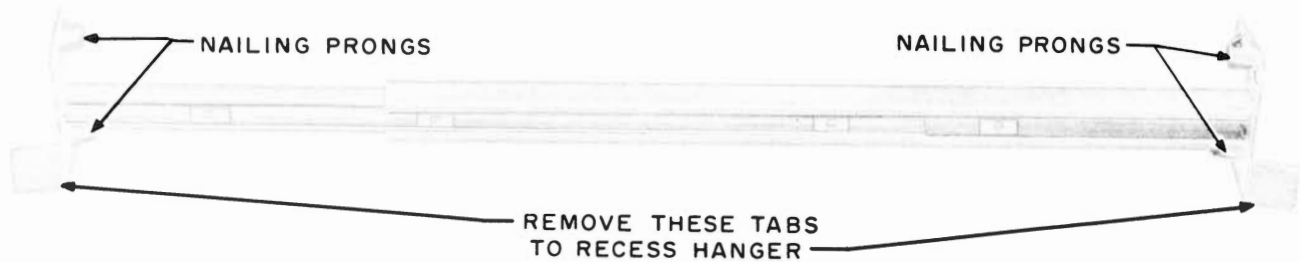


Fig. 11 – KS-19202 Hanger

**3.04** When these sets are installed in walls separating adjoining apartments, the ringer may be audible in the adjacent apartment. Consideration should be given by installing the apparatus boxes in walls not common to adjacent apartments or rooms.

**3.05** The 113A apparatus box is recommended for prewiring of multiple unit dwellings where it is desired to loop the wiring cable from unit to unit.

**3.06** The recommended installation height is 63 inches from floor surface to top edge of apparatus box.

**3.07** The 107A apparatus blank is available for covering the 113-type apparatus box when no set is installed.

**3.08** To install set in apparatus box:

1. Fasten terminal strip assembly to apparatus box with screws provided.
2. Terminate inside wire or cable in accordance with sections covering connections for particular set. Dress slack wire or cable against back of apparatus box or in applique to avoid interference with set components. Fig. 12 illustrates a

method of storing slack cable and cord for use with the 751-type sets where this is more critical.

3. Connect plug and connector between telephone set and apparatus box.
4. Position panel on apparatus box carefully to avoid snagging set wiring and insert mounting screws.
5. Place mat on face of panel.
6. Align mat frame with projecting tabs on panel and snap in place. If necessary, the projecting tabs may be adjusted by bending to insure a snug fit.

**3.09** The 1A HOME INTERPHONE components as installed in a 751-type telephone set are shown in Fig. 5. The 664B transmitter and 761A loudspeaker must be ordered separately and installed as required.

**3.10** The wire mounting bracket of the 664B transmitter is part of the electrical circuit and must be insulated from the steel panel. Two rubber grommets (P-24E282) are used for this purpose. See exploded view of Fig. 5 for placing the grommets.

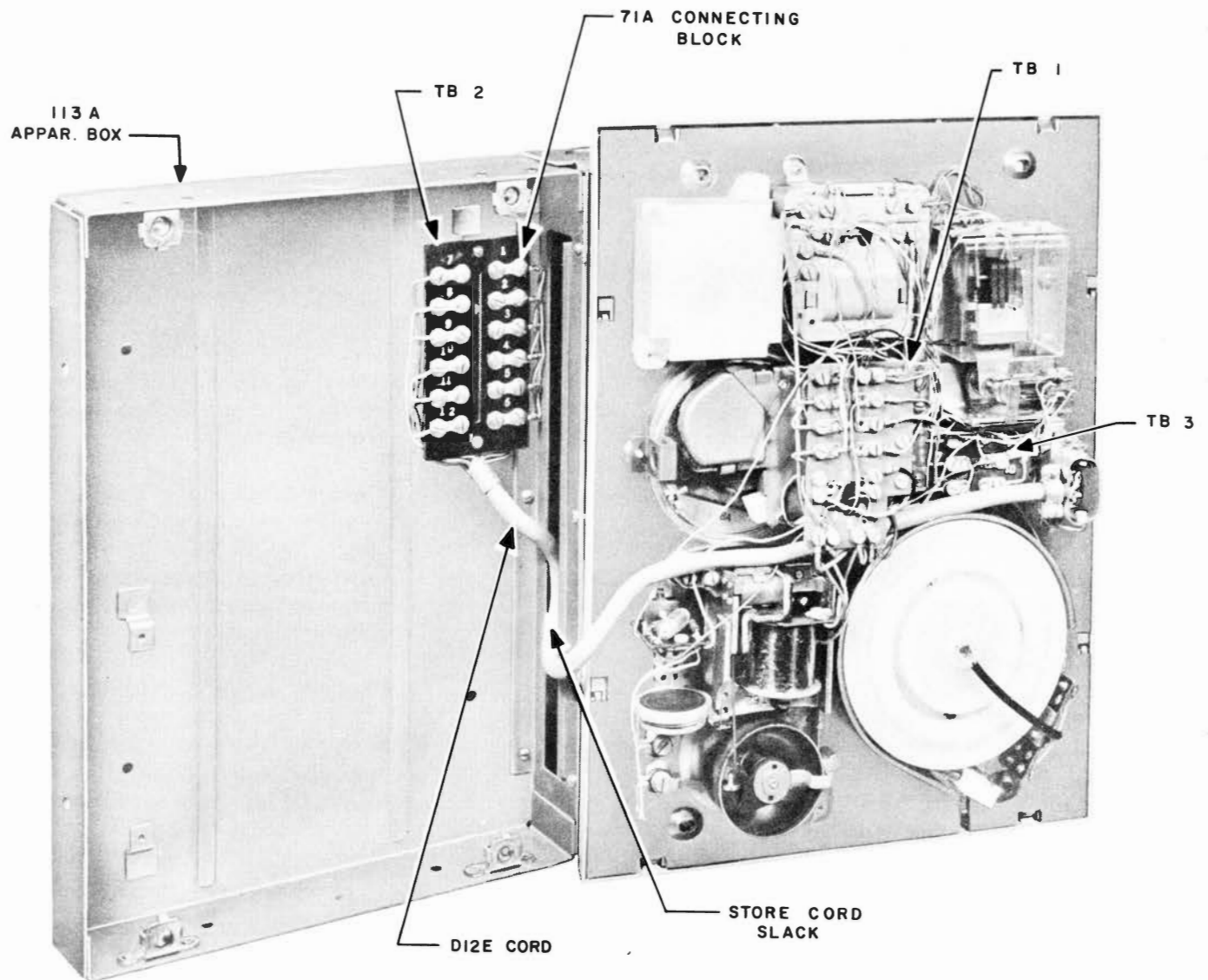


Fig. 12 — 751-Type Telephone Set With 113A Apparatus Box