

BELL SYSTEM PRACTICES
Station Installation and Maintenance

SECTION C24.186
Issue 1, 9-1-31
Standard

TERMINATING WIRE AND CORDS AT TWO AND THREE-POST CONNECTING BLOCKS

1. GENERAL

1.01 This section covers the methods of terminating wire and cords at two and three-post connecting blocks.

1.02 Connecting blocks with covers should be used where appearance is a factor and also to protect connections from injury or circuit trouble. Where a connecting block is mounted inside of a desk, always use a cover to protect the free conductors of cord from possible interference with desk drawer as shown in Fig. 6.

2. METHOD OF TERMINATING WIRE

2.01 In terminating wire at two or three-post connecting blocks, arrange connections as indicated by Fig. 1.

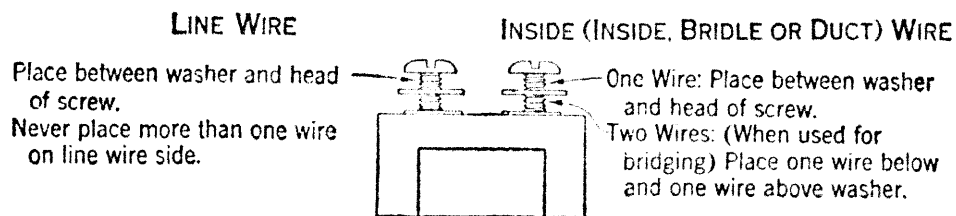


Fig. 1.

2.02 A convenient method for terminating wire at two or three-post connecting blocks is as follows:

- (a) Place free ends of conductors into grooves of block in accordance with the arrangement shown in either Fig. 2, 3 or 4 (whichever figure applies).
- (b) Mount the connecting block.
- (c) Temporarily form conductors into place as shown in either Fig. 2, 3 or 4 and then lay each conductor over face of its associated terminal screw.
- (d) Remove insulation from free end of each conductor, starting at a point approximately $\frac{1}{8}$ inch from the

near end of screwhead. (A method for removing insulation is outlined in the section covering "Splicing and Repairing Wire.")

- (c) Place end of each conductor $3/4$ way around screw in a clockwise direction with insulation $1/8$ inch from edge of washer.
- (d) Tighten each screw securely, cut off excess wire and dress conductors neatly against the block as shown in the following typical illustrations:

TWO-POST CONNECTING BLOCK
(Left side and right side shown)

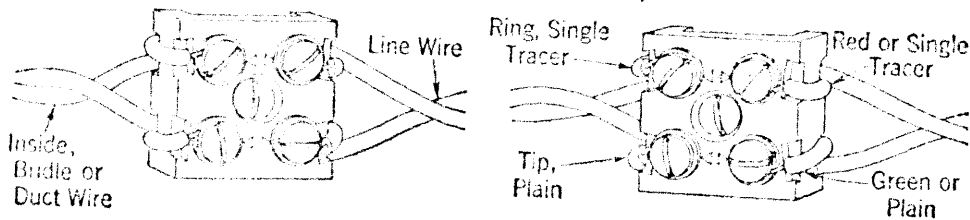


Fig. 2.

THREE-POST CONNECTING BLOCK, SINGLE GROOVE
(Left side and right side shown)

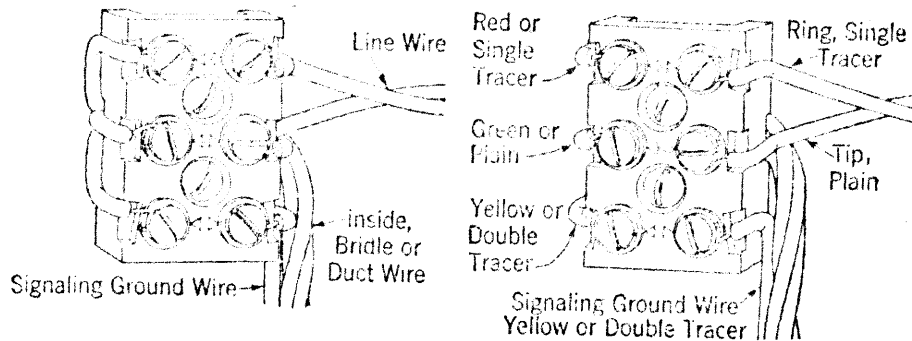


Fig. 3.

THREE-POST CONNECTING BLOCK, TRIPLE GROOVE
(Left side and right side shown)

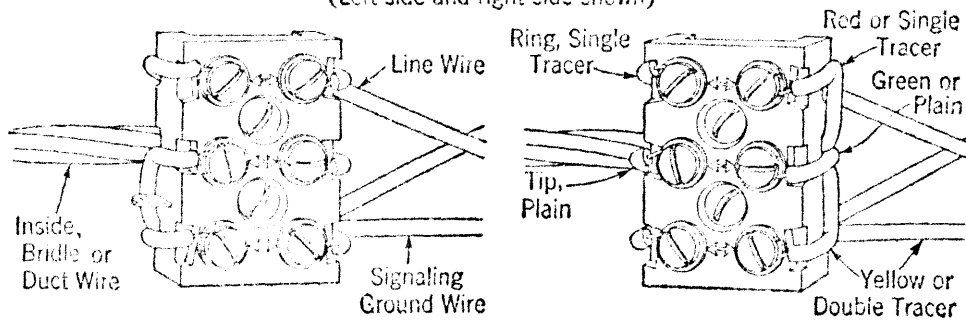


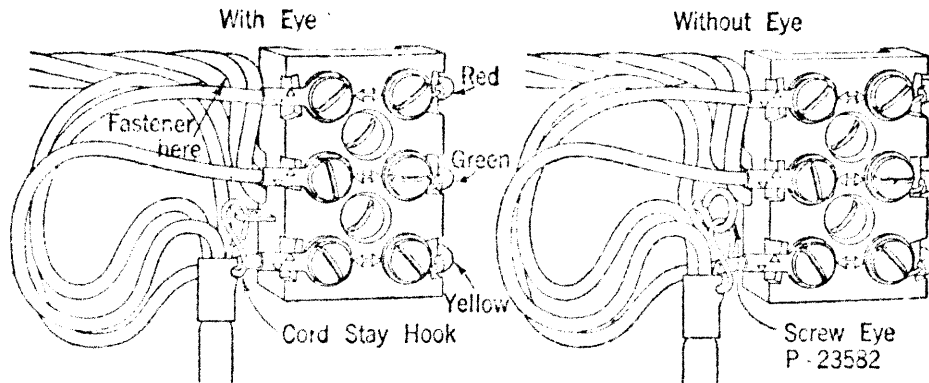
Fig. 4.

3. METHOD OF TERMINATING WIRE AND CORDS

3.01 Terminate wire and cords as shown in Figs. 5, 6 and 7.

In the case of cords, place cord tips with flat side up or out as shown to prevent crosses or grounds.

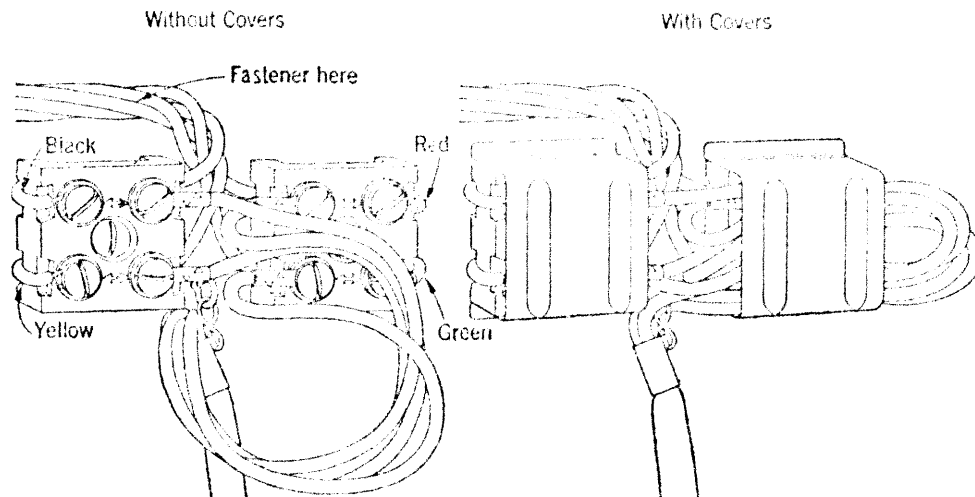
METHOD OF CONNECTING SET CORD TO THREE POST CONNECTING BLOCK



Where a connecting block without eye is used, place a screw eye for fastening cord, as shown. After fastening cord to block or screw eye, pinch opening on cord stay hook together with pliers.

Fig. 5.

METHOD OF CONNECTING SET CORD TO TWO TWO-POST CONNECTING BLOCKS



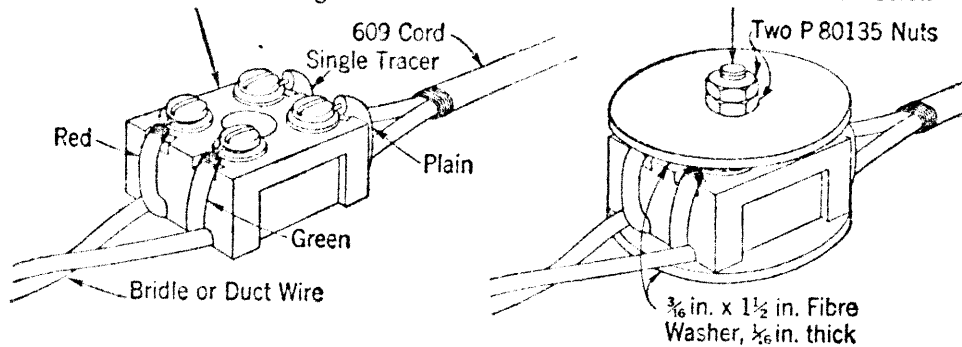
For five-conductor cords use one three-post and one two-post connecting block.

Fig. 6.

METHOD OF CONNECTING CORD TO WIRES IN OUTLET BOX

Make Connections as shown
Two Post Connecting Block

Place Fibre Washers as shown
1 in. No. 8-32 R.H. Brass Mach. Screw



Note: Do not fasten connecting block to outlet box.

Fig. 7.