

SERVICE

1752-TYPE TELEPHONE SETS

1. GENERAL

1.01 This section provides maintenance and connection information for the 1752-type telephone set. Maintenance information was previously contained in Section 502-750-102. Connection information was contained in Section 502-750-422 which is hereby canceled.

2. MAINTENANCE

2.01 Maintenance performed on customer's premises should be limited to replacement of accessible parts which are available through supply channels.

2.02 Ringers, handsets, dials, etc. used in these sets should be maintained in accordance with section covering the particular item.

2.03 The exterior of these sets should be clean and not marred or chipped. The vinyl-faced mat may be cleaned with a water-dampened KS-2423 or equivalent cloth. Replace defective mat as follows:

- (1) Grasp mat retainer frame at top, lift upward and out to release frame from panel of set.
- (2) Remove handset from hook of set.
- (3) Pull out handset cord to allow working slack.
- (4) Remove mat from face of panel.
- (5) Remove grommet from mat as shown in Fig. 1.
- (6) Install grommet in new mat by reversing procedure used in removal.
- (7) Position mat on panel and secure using the mat retainer frame.

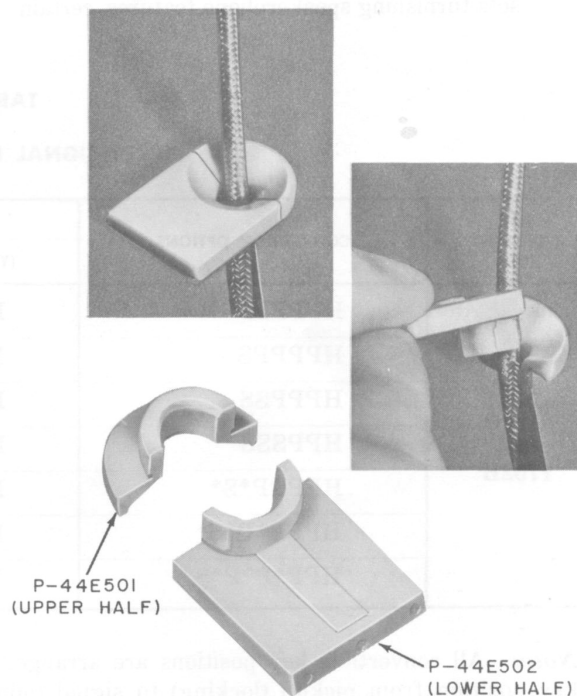


Fig. 1—Removal of Handset Cord Grommet

2.04 To test the cord reel, pull the handset cord out to its maximum length. With the cord maintained perpendicular to the panel, the cord should retract fully. Any twist in the cord should be removed before making test.

2.05 Replace the cord reel if the cord will not retract or if the cord is frayed, kinked, or noisy. Field maintenance of the cord reel, or replacement of the cord, is not recommended.

Note: When replacing the cord reel use either the 3A or 3B type when the telephone set is not subjected to temperatures below 40 degrees F. Below 40 degrees F only the 3A cord reel should be used.

2.06 For maintenance information on the 762A loudspeaker and P-29E579 transmitter, refer to appropriate section in Division 512.

leads must be disconnected, insulated, and stored to avoid interference with working circuits. The lead designations of leads to be removed are as follows; T1, R1, AG, S1, 1R, S, F1, P1, M2, M1, and S2.

3. CONNECTIONS

3.01 When a 1752 telephone set is multiplied with sets furnishing speakerphone features, certain

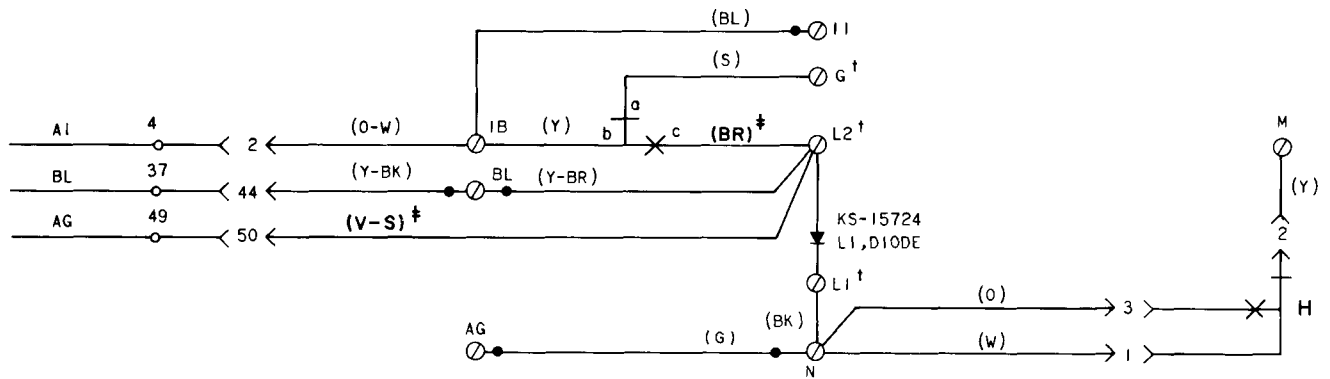
TABLE A

PICKUP-SIGNAL KEY CONVERSION

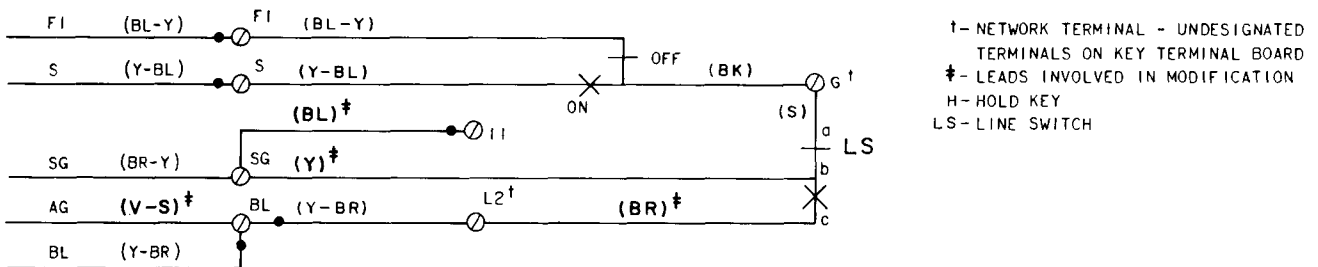
KEY TELEPHONE SET	CONVERSION OPTIONS	635A2 KEY LEADS			STRAP
		(Y-BR)	(BR)	(BR-BK)	(S-R)
1752A and 1752B	HPPPPP	M	M	X	M
	HPPPPS	M	M	SG	M
	HPPSSS	M	M	X	SG
	HPPSSS	M	X	X	SG
	HPPPP*S*	M	M	N	5H
	HPPP*P*S*	M	X	N	5H
	HPP*P*P*S*	X	X	N	5H

Note: All convertible key positions are arranged in the factory as pickup positions. To convert a key position from pickup (locking) to signal (nonlocking), remove the P-28E773 locking pin from plunger at the key position to be converted. To convert a key position from nonlocking to locking, insert P-28E773 locking pin. When keys are converted for signaling, the S lead of key involved provides the signal circuit and the G lead provides the common signal ground.

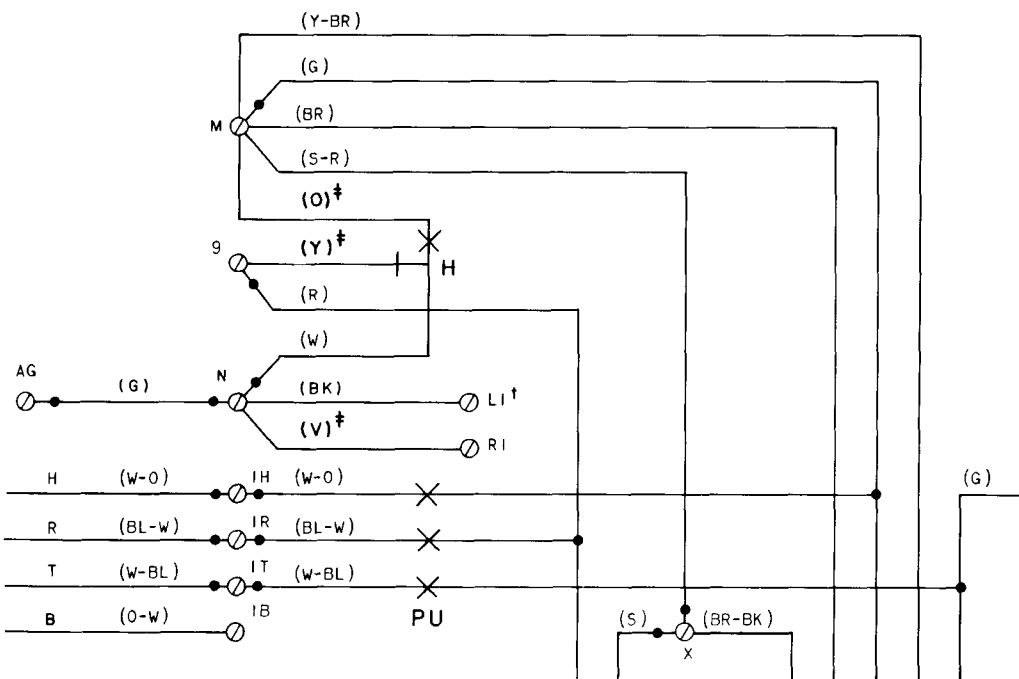
*These pickup key options are used on private or intercommunicating lines with the signal key common. The signal key will operate the signal circuit of each line when the associated pickup key is depressed. Use S lead on 2nd, 3rd, or 4th pickup key as required, and G lead for common signal ground.



A-1A1-1A2 KTS WIRED FOR BUSY LAMP FEATURE



†- NETWORK TERMINAL - UNDESIGNATED
TERMINALS ON KEY TERMINAL BOARD
‡- LEADS INVOLVED IN MODIFICATION
H- HOLD KEY
LS- LINE SWITCH



B-1A KTS WIRED FOR BUSY LAMP FEATURE

Fig. 2—Optional Features For 1752-Type Telephone Set

SECTION 502-737-401

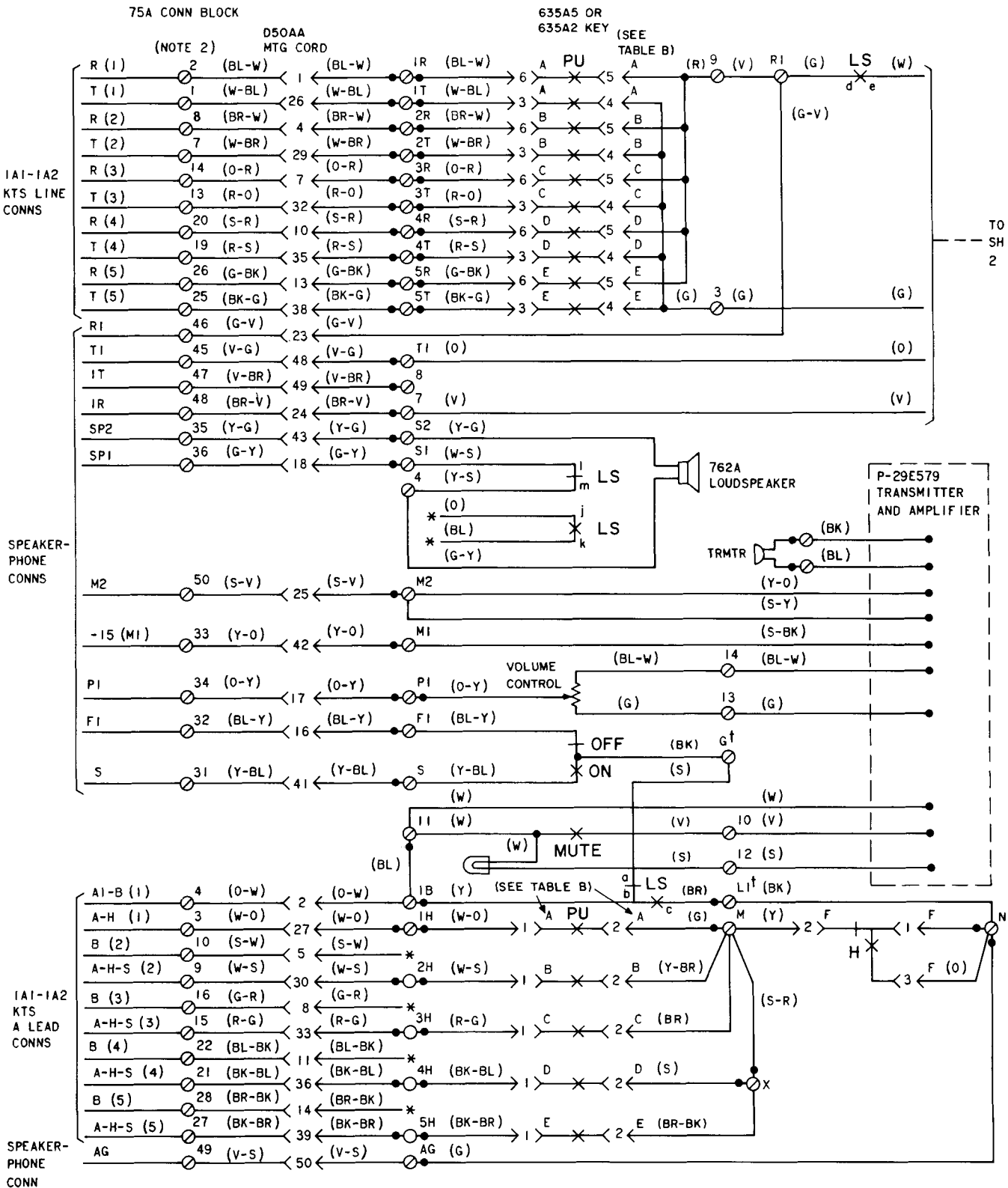


Fig. 3—1752-Type Telephone Set, Connections (Sheet 1 of 2)

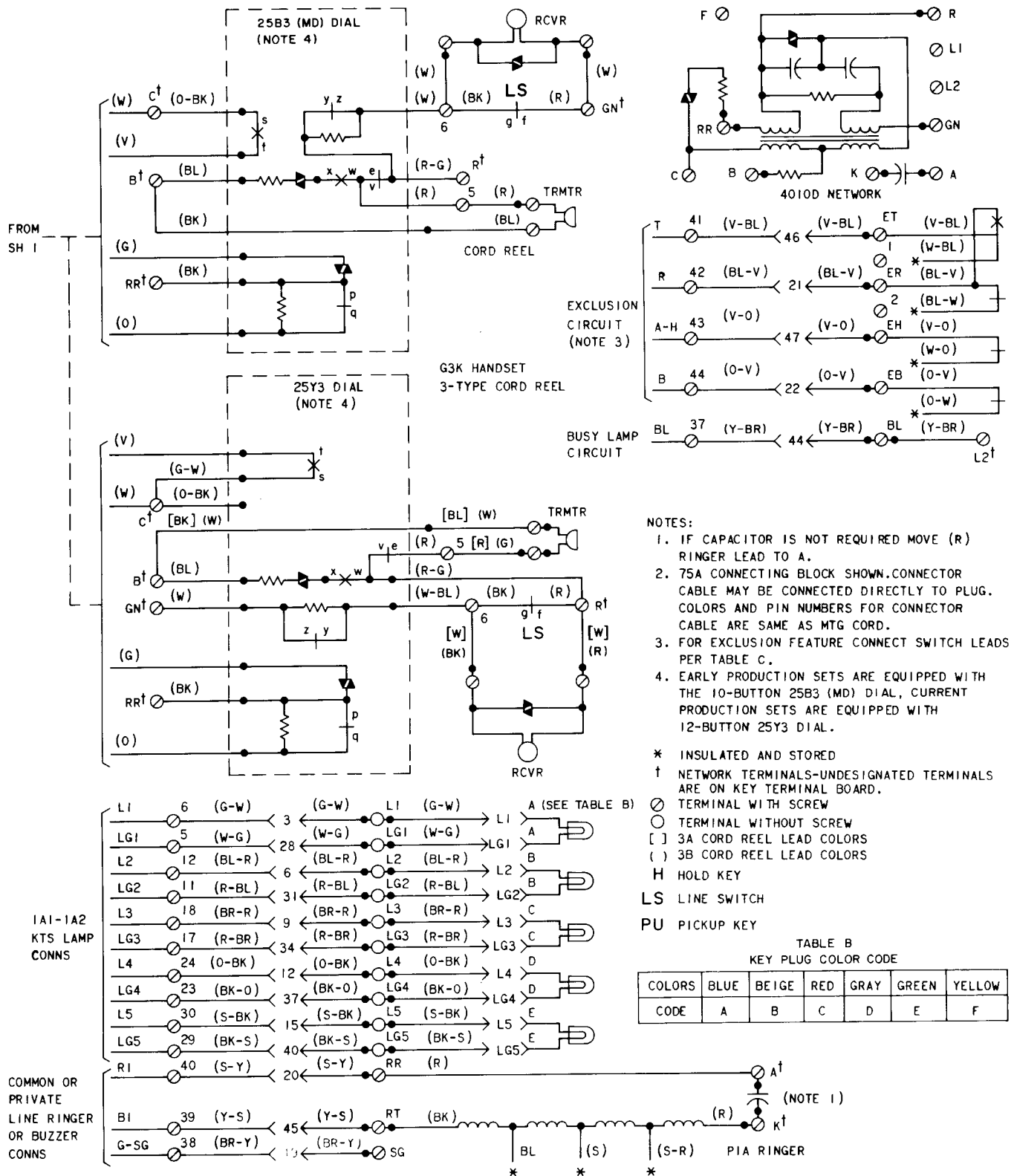


Fig. 3—1752-Type Telephone Set, Connections (Sheet 2 of 2)

TABLE C
CONNECTIONS FOR LINE EXCLUSION

EXCLUSION	KEY TELEPHONE SYSTEM	EXCLUSION KEY LEADS							
		(BL-W)	(W-BL)	(O-W)	(W-O)	(V-BL)	(BL-V)	(V-O)	(O-V)
On any Line	1A	R*	T*	1B	H*	ET	ER	EH	EB
	1A1 or 1A2	R*	T*	†	H*	ET	ER	EH	EB

*Terminal of line involved.

†Individually insulated and stored.

TABLE D
POLARITY GUARD CONNECTIONS (SEE NOTES)
(P-90D052 GUARD ASSEMBLY)

LEAD	COLOR	REMOVE FROM	CONNECT TO	
		NET.	NET.	POLARITY GUARD
Dial	(BK) (G-W)*	RR C		T S
Line Switch	(W) [S-BR]	C		S
Polarity Guard	(G) (W)		RR C	

* Sets with 25Y3 dial only.

() Current color code.

[] MD color code.

Notes 1: Polarity guard cannot be added to sets having 25B3 (MD) dial and connected for speakerphone.

2: Polarity guard for use only when specified by local instructions for end-to-end signaling installation.