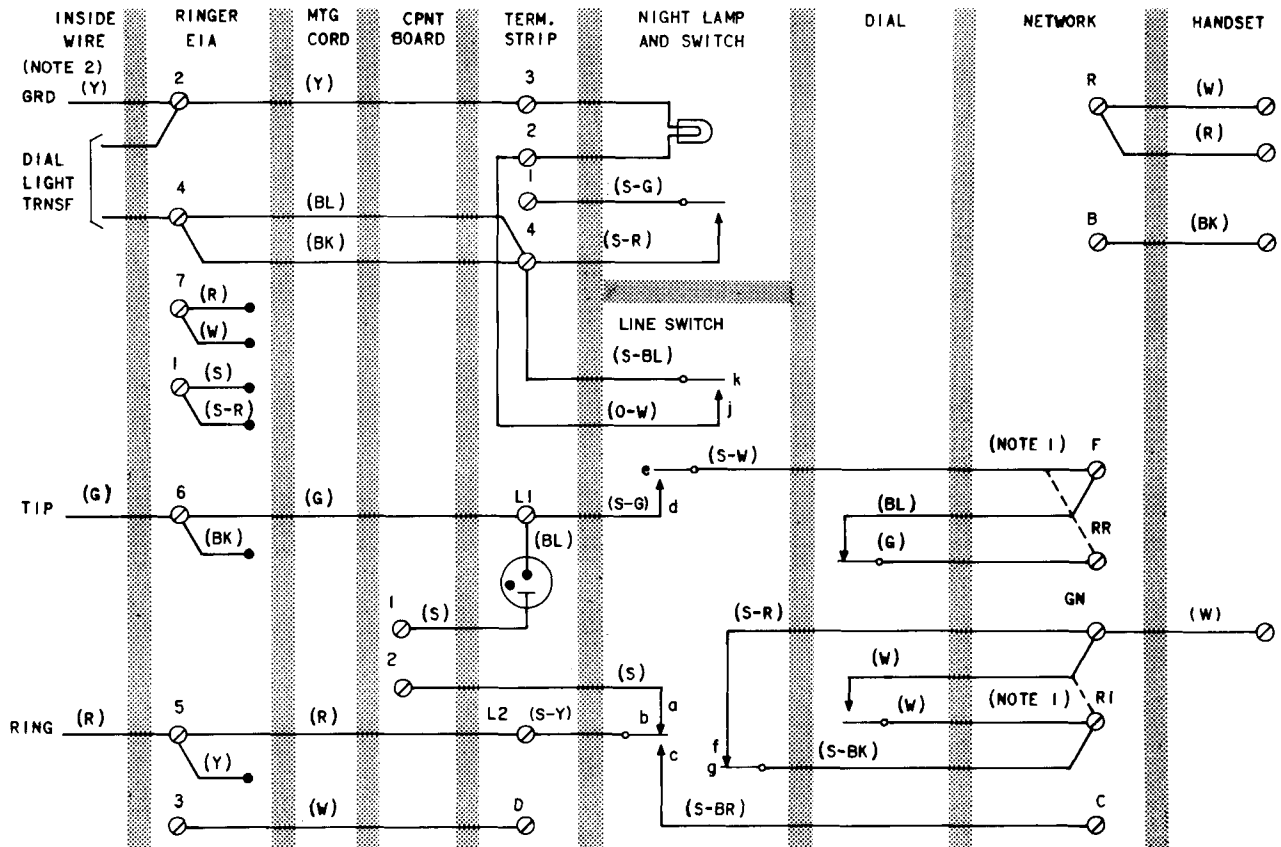


SERVICE 701D TELEPHONE SETS



NOTES:

1. DOTTED LINE INDICATES CONNECTION FOR MANUAL SERVICE. DIAL REMAINS ON THE SET.
2. GROUND MAY BE OMITTED IF NOT REQUIRED FOR SERVICE; NOT REQUIRED FOR PROTECTION OF DIAL-LIGHT TRANSFORMER.
3. SET WIRED FOR BRIDGED SERVICE. SEE TABLE A FOR OTHER CLASSES OF SERVICE.

Fig. 1—701D Telephone Set, Connections

TABLE A
LINE AND RINGER CONNECTIONS

WIRE OR LEAD		INDIVIDUAL OR BRIDGED	RING PARTY	TIP PARTY
Ringer	R	7	7	7
	S-R	1	1	1
	BK	6	2	2
	S	1	1	1
Capacitor in Ringer	W	7	7	7
	Y	5	5	6
Mtg Cord at Ringer	R	5	5	6
	G	6	6	5