

REFERENCE

1702B TELEPHONE SETS



Fig. 1—1702B Telephone Set

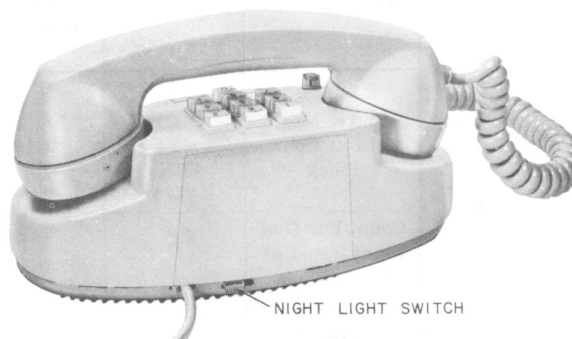


Fig. 2—1702B Telephone Set, Rear View

1. GENERAL

1.01 This section provides identification, installation, maintenance, and connection information for the 1702B telephone set previously contained in Sections 502-710-102 and 502-710-433 which are hereby canceled.

2. IDENTIFICATION

2.01 This set is equipped with a concealed lamp which illuminates the dial when the handset is removed. This lamp also serves as a night light under control of a slide switch located in the base at the rear of set (Fig. 2).

2.02 These sets are available in standard telephone colors. Refer to Section 500-120-100 for promoted and nonpromoted colors.

2.03 The 1702B telephone set is factory wired for individual line or 2-party flat rate service. With internal wiring changes this set may be used with other services (Table A).

Ordering Guide

2.04 Basic Telephone Set:

Set, Telephone, 1702B-*

2.05 Replaceable Components:

- P-89B4-* Housing
- Ringer, M1A
- Dial, 25P4 or 25H4 (MD) (illuminated)
- KS-19387 (GE-259) dial lamp order by KS number
- Handset, G3AR
- Cord, Handset, H4CJ-*
- Cord, Mounting, D5AK-*

* Add appropriate color suffix.

TABLE A
LINE AND RINGER CONNECTIONS FOR BRIDGED, RING,
AND TIP PARTY SERVICE

WIRE OR LEAD	COLOR	INDIVIDUAL OR BRIDGED	RING PARTY	TIP PARTY NO. IDENT GROUND	TIP PARTY IDENT GROUND	
					1000 OHM	2650 OHM
D5AK Mtg. Cord at Conn. Block	(R)	R	R	G	G	G
	(G)	G	G	R	R	R
	(Y)	G	Y	Y	Y	Y
	(BK)	B	B	B	B	B
	(W)	Y	Y	Y	Y	Y
Conn. For Dial Light Trnsf at Conn. Block		Y	Y	Y	Y	Y
		B	B	B	B	B
Ringer at Net.	(S-R)	*	*	*	*	L1
	(S)	*	*	*	L1	*
Line Switch at Net.	(BR) [S-BR]	C	C	F	F	F
	(W) [S-W]	F	F	C	B	B
D5AK Cord at Net.	(G)	L1	L1	L1	C	C

* Insulated and stored

() Current color code

[] MD color code

Notes: 1. If (BK) strap is present between network terms. H and A remove from A; insulate and store.

2. To silence ringer for all classes of service remove (R) ringer lead from K of network; insulate or store on spare terminal.

3. INSTALLATION

3.01 Insofar as possible, be guided by the customer's wishes in placing apparatus. Consider the following:

- Safety for yourself, customer, and maintenance personnel.
- Availability of power outlet for 2012A transformer.
- Location of telephone set so ringer volume is adequate for area.
- General appearance of installation.

3.02 Install polarity guard (D-180229 Kit of Parts) only when specified by local instructions for end-to-end signaling.

3.03 Select a 105-120 volt ac receptacle that is not on a circuit controlled by a switch. A 2012A transformer should be used with each telephone set. A 2A clamp is available to secure this transformer to the service outlet. Current production transformers have folded-blade prongs for this purpose. For multiple installations, see section covering station transformers.

3.04 For proper illumination of the dial, the length of the wire between the transformer and the telephone set should not exceed 250 feet of standard inside wire. ***Do not use a 25-foot mounting cord because of added resistance.***

Portable Installation

3.05 Jacks and plugs are available for portable installation of these telephone sets. Refer to Division 461 for selection of appropriate types.

4. MAINTENANCE

4.01 Maintenance of the 1702B telephone set is limited to replacing defective components and burnishing or adjusting line switch contacts.

4.02 Refer to sections covering dials, handsets, cords, ringers, line keys, etc., for maintenance of these components.

4.03 Housing, dial faceplates, and handsets may be cleaned with a damp KS-2423 cloth. ***Do not use scouring cleaners on colored components as this may damage finish.***

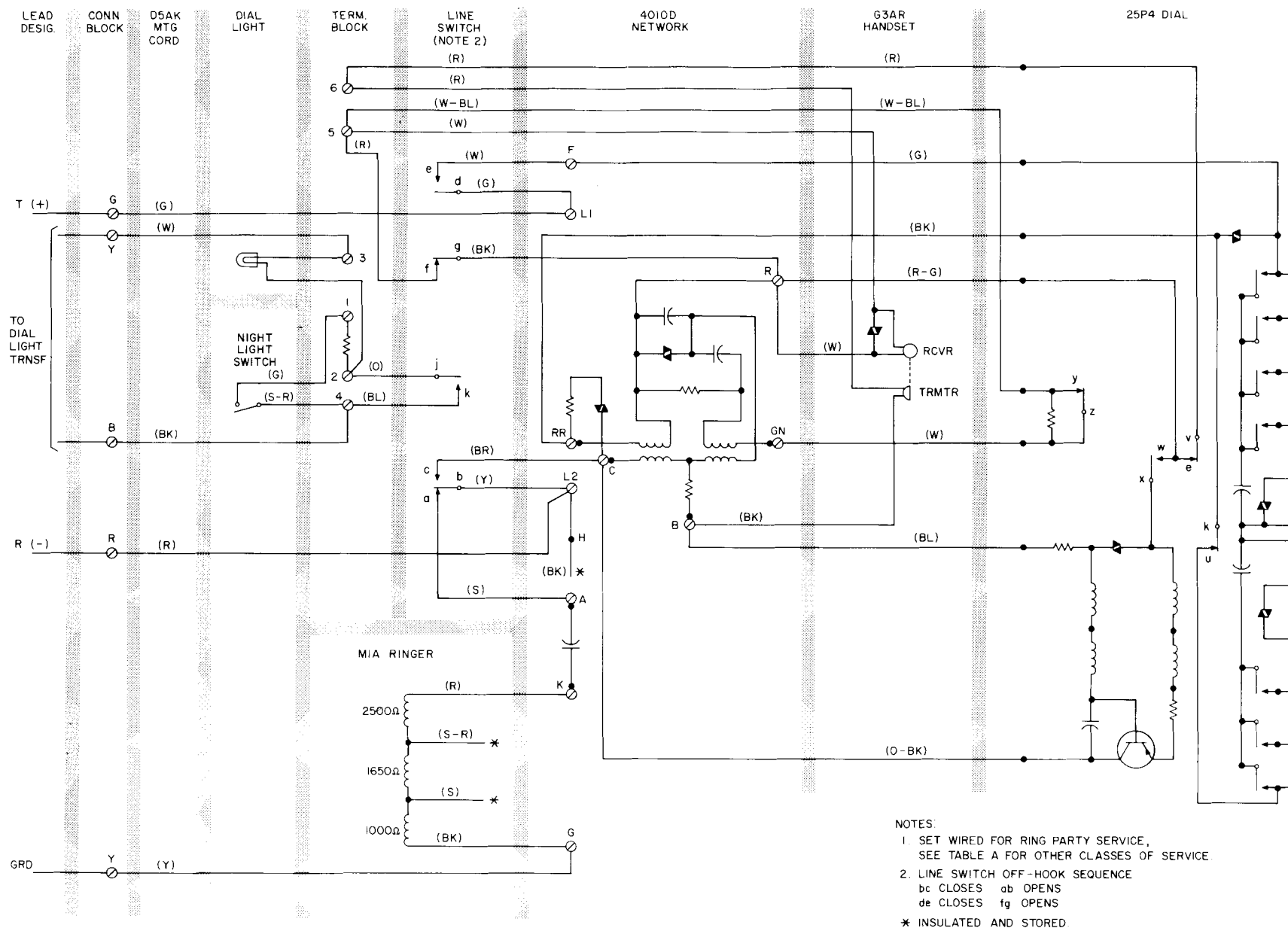
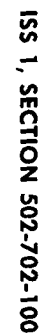


Fig. 3—1702B Telephone Set (Current Production) Using 25P4 Dial and 4010D Network



Page 5

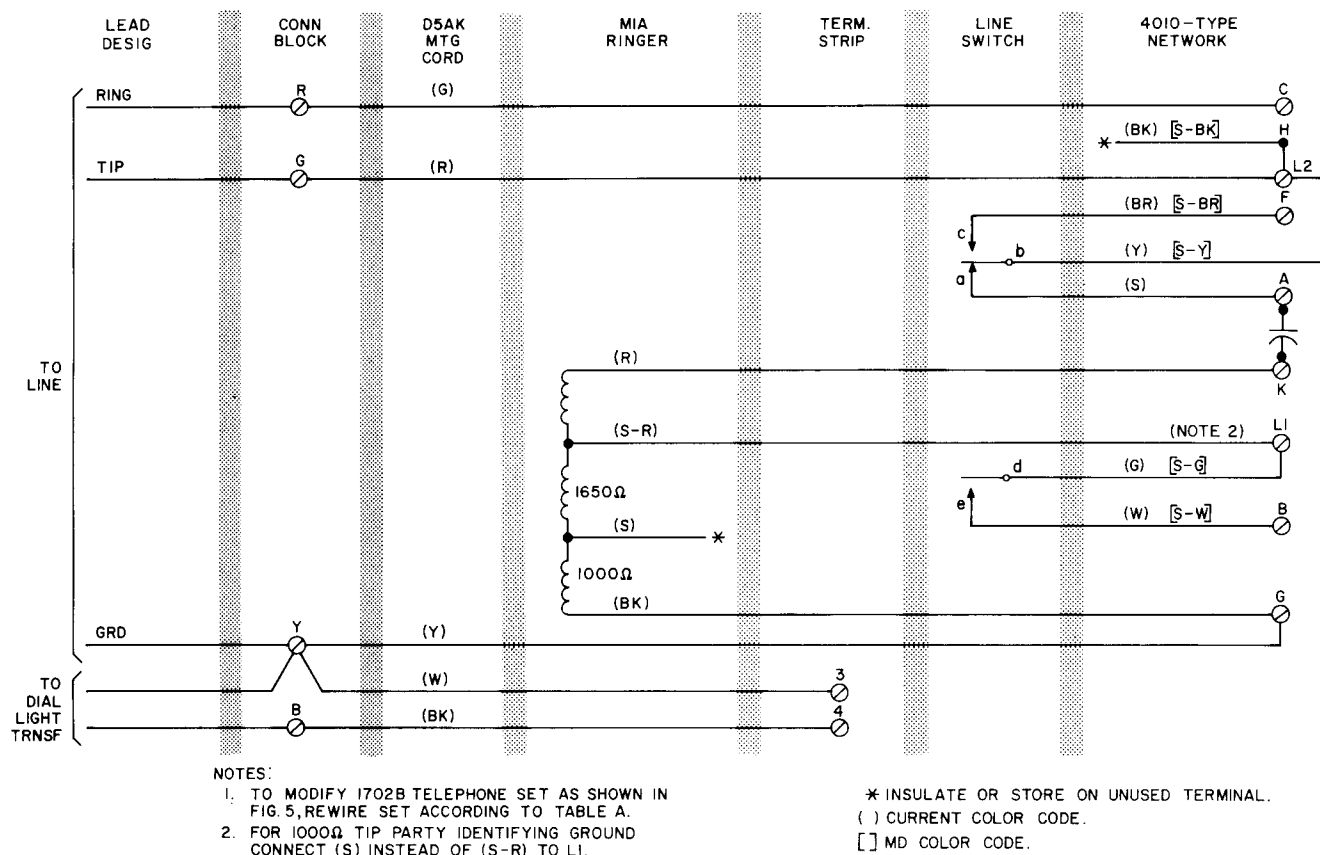


Fig. 5—1702B Telephone Set, Wired for 2650 Ohm Tip Party Identification Ground

TABLE B
POLARITY GUARD CONNECTIONS FOR NONKEY TELEPHONE SYSTEMS
(D-180229 KIT OF PARTS)

WIRE OR LEAD	COLOR	REMOVE FROM NETWORK	CONNECT TO	
			NETWORK	TERM BOARD*
Dial	BK	RR		3
Line Switch	(BR) [S-BR] ①	C		4
	(W) [S-W] ②			
D5AK Cord	(G) ③			
D-180229 Polarity Guard	(R)			3
	(BK)			4
	(G)		RR	
	(W)		C	

* Component of polarity guard assembly

① If wired for ring or bridged service

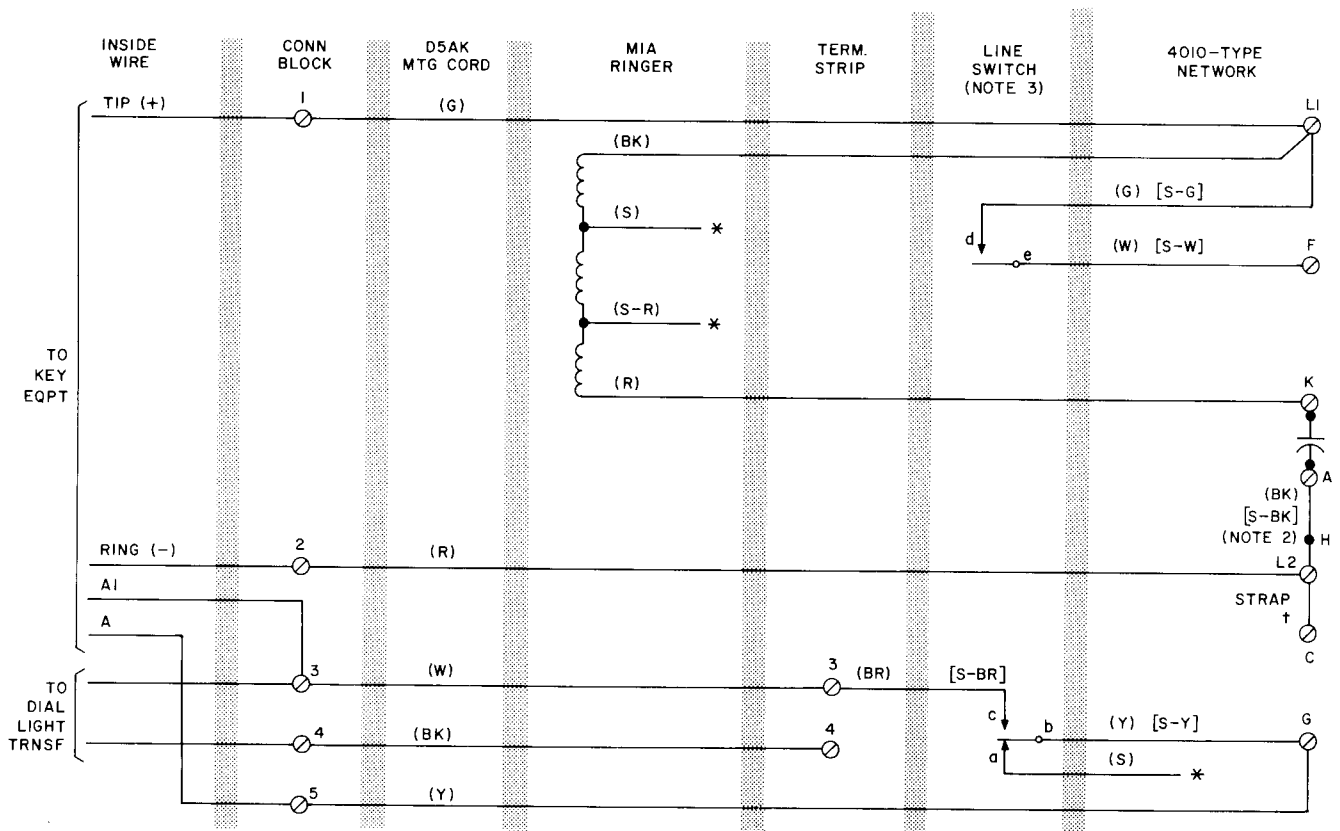
② If wired for tip party (no identification ground)

③ If wired for tip party (with identification ground)

() Current color code

[] MD color code

Note: Install polarity guard assembly only when specified by local instructions for end-to-end signaling.



NOTE:

1. TO MODIFY 1702B TELEPHONE SET AS SHOWN IN FIG. 6, REWIRE SET ACCORDING TO TABLE C.
2. CHECK THAT (BK) [S-BK] STRAP IS TERMINATED ON (A) OF NETWORK, SETS OF LATER MANUFACTURE HAVE THIS LEAD INSULATED AND STORED.
3. LINE SWITCH OFF-HOOK SEQUENCE
bc CLOSES ab OPENS
de CLOSES fg OPENS

- * INSULATED AND STORED
+ USE MIW CORD OR EQUIVALENT
() CURRENT COLOR CODE
[] MD COLOR CODE

Fig. 6—1702B Telephone Set, Wired for 1A1 or 1A2 Key Telephone System

TABLE C

MODIFICATION FOR 1A1 OR 1A2 KEY
TELEPHONE SYSTEM

WIRE OR LEAD	COLOR	REMOVE FROM NET.	CONNECT TO	
			NET.	TERM STRIP
Line Switch	(Y) [S-Y]	L2	G	
	(BR) [S-BR]	C		3
Ringer Strap	(S)	A	Insulate and store	
	(BK)	G	L1	
Network Strap	*		C ↔ L2	
	(BK)	Stored Location	A	

* MIW cord or equivalent. Do not use strap if polarity guard is to be installed.

() Current color code

[] MD color code

Note: Polarity Guard Lead Connections

(BK) to L2 on network (G) to RR on network
(W) to C on network (R) to 3 of polarity guard term. strip

Remove (BK) dial lead from RR on network and connect to 3 of polarity guard term. strip.