

REFERENCE

701B, 702B, AND 702BM TELEPHONE SETS

1. GENERAL

1.01 This section provides identification, installation, maintenance, and connection information for 701B (MD), 702B, and 702BM telephone sets (Fig. 1).

1.02 This section is reissued to:

- Revise housing part numbers in Table A
- Change Table reference in Fig. 18
- Change title on Tables G and H
- Add comcode numbers.

2. IDENTIFICATION

2.01 These sets are equipped with a concealed lamp which illuminates the dial when the handset is removed. This lamp also serves as a night light under control of a slide switch located in the base at rear of set (Fig. 2).

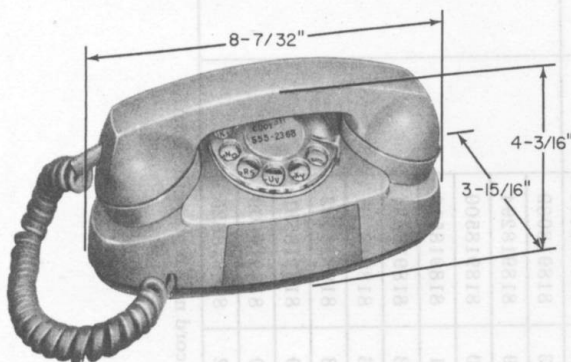


Fig. 1—700-Type Telephone Set

2.02 Table A lists the major components of 701B, 702B, and 702BM PRINCESS® telephone sets.

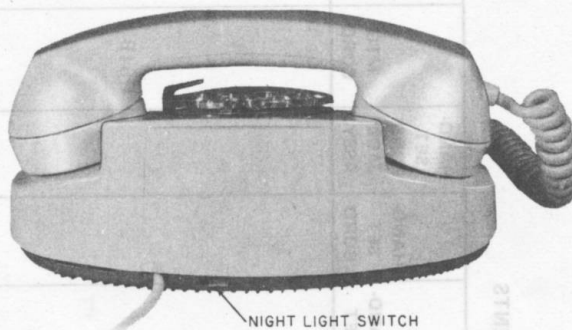


Fig. 2—700-Type Telephone Set, Rear View

2.03 These sets are available in promoted telephone colors.

2.04 The 701B telephone set is not equipped with an internal ringer. When a ringer is required, an E1- or F1-type external ringer may be used. With either ringer, individual line, or 2-party flat rate service is available. Internal wiring changes must be made when other services are required.

2.05 The 701B telephone sets may be used with the following services:

- 4-party selective and 8-party semiselective service
- 1A1 and 1A2 key telephone systems.

2.06 The 702B telephone set (Fig. 3) is similar to the 701B which it replaces, except that an internal ringer (M1A) is provided.

2.07 The 702BM telephone set (Fig. 4) is a modular PRINCESS telephone set. It has the same feature as the 702B set plus modular features.

♦TABLE A♦

701B, 702B, AND 702BM TELEPHONE SET COMPONENTS

TEL SET	HOUSING AND PLUNGER ASSEMBLY		RINGER	NET.	DIAL	DIAL LAMP	LAMP SOCKET	HAND-SET	HAND-SET CORD	HAND-SET CORD JACK ASSY	MTG CORD	MTG CORD JACK ASSY
	P-NO.	COMCODE NO.										
701B (MD)	P-81M203	828142034	E1-Type or F1A External	495A	8A	KS-19387	KS-19204 L2	G3	H4CJ		D64B	
	P-81M250	828142505										
	P-81M251	828142513										
	P-81M253	828142539										
	P-81M256	828142562										
	P-81M258	828142588										
	P-81M259	828142596										
	P-81M260	828142604										
	P-81M261	828142612										
	P-81M262	828142620										
702B	P-81M264	828142646										
	P-89A803	818918039									D5AK (MD) or D4BT*	
	P-89A829	818918294										
	P-89A850	818918500										
	P-89A851	818918518										
	P-89A853	818918534										
	P-89A856	818918567										
	P-89A858	818918583										
	P-89A859	818918591										
	P-89A860	818918609										
	P-89A862	818918625										

* D4BT mounting cord may replace the D5AK.

◆TABLE A (Cont)◆

701B, 702B, AND 702BM TELEPHONE SET COMPONENTS

TEL SET	HOUSING AND PLUNGER ASSEMBLY		RINGER	NET.	DIAL	DIAL LAMP	LAMP SOCKET	HAND- SET	HAND- SET CORD	HAND- SET CORD JACK ASSY	MTG CORD	MTG CORD JACK ASSY
	P-NO.	COMCODE NO.										
702BM		840186035				KS- 19387	KS- 19204 L2	G15A	H4DU	616P	D48U	623P4
		840186506										
		840186514										
		840186530										
		840186563										
		840186589										
		840186597										
		840186605										
		840186621										

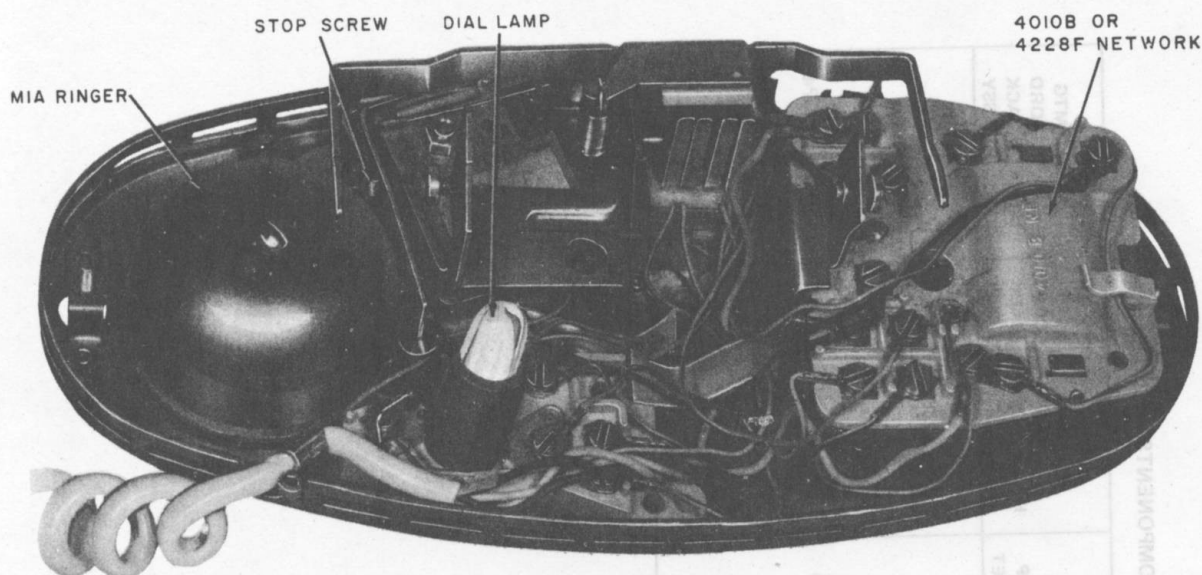


Fig. 3—702-Type Telephone Set, Dial and Housing Removed

3. INSTALLATION

3.01 Consider the following:

- Customer's wishes
- Safety for yourself, customer, and maintenance personnel.
- Availability of power outlet for transformer.
- Location of telephone set so ringer volume is adequate for area.
- General appearance of installation.

Dial Light Transformer

3.02 Select a 105-120 volt AC receptacle on a **circuit not controlled by a switch** for dial lamp transformer. A 2A clamp is available to secure the 2012A transformer to the service outlet. Current production transformers have folded-blade prongs and the 2A clamp is not required. For multiple dial lamp sets, refer to section covering station transformers for selection information.

3.03 For proper illumination of the dial, the length of the wire between the transformer and the telephone set should not exceed 250 feet of standard inside wire. ***Do not use a 25-foot mounting cord because the added resistance may result in decreased illumination.***

Ringer

3.04 When an external ringer is required, install an E1-type or F1A with each 701B telephone set. Fig. 5 shows the E1 but is typical for the F1.

3.05 When no external ringer is used with the 701B or 702B telephone set, the mounting cord of the telephone set should be terminated on a connecting block or plug as required.

3.06 No provisions are made for using an external ringer with the 702BM set.

Inductors (701B only)

3.07 A 1610A or 1635A inductor must be installed in the base of the 701B telephone set when ringer is not used and tip party identification is required.

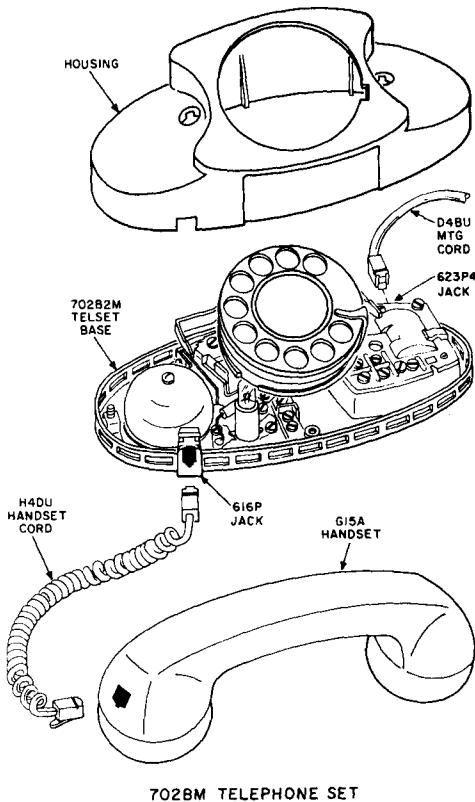


Fig. 4—702BM Telephone Set

3.08 Refer to Fig. 6 for inductor schematic.

3.09 Install the 1610A inductor (ordered separately) as follows:

- (1) Remove housing from telephone set.
- (2) Loosen dial and mounting cord stay hook, lay aside.
- (3) Install inductor as shown in Fig. 7 and 8.
- (4) Insert wedge in position (Fig. 8).

(5) Connect inductor between terminals B of network and 3 of terminal board.

(6) Replace mounting cord stay hook, dial, and housing.

3.10 Install the 1635A inductor (ordered separately) as follows:

- (1) Remove housing from telephone set.
- (2) Loosen dial and lay it aside.
- (3) Remove left screw from dial mounting bracket.
- (4) Install inductor as shown in Fig. 9.
- (5) Replace screw in dial mounting bracket.
- (6) Connect inductor between terminals B of network and 3 of terminal board.
- (7) Replace dial and housing.

D-179924 Kit of Parts (701B only)

3.11 A D-179924 Kit of Parts containing a weight, spring retainer, and insulator is available to reduce sliding while dialing the 701B telephone.

3.12 Install D-179924 Kit of Parts as follows:

- (1) Remove telephone set housing.
- (2) Dress all leads to prevent wiring from being caught between weight and base of set.
- (3) Install P-25E307 or 812553071 insulator as shown in Fig. 10.
- (4) Install P-15E719 or 811557198 weight and P-24E510 or 812455103 spring retainer as shown in Fig. 11.
- (5) Replace telephone set housing.

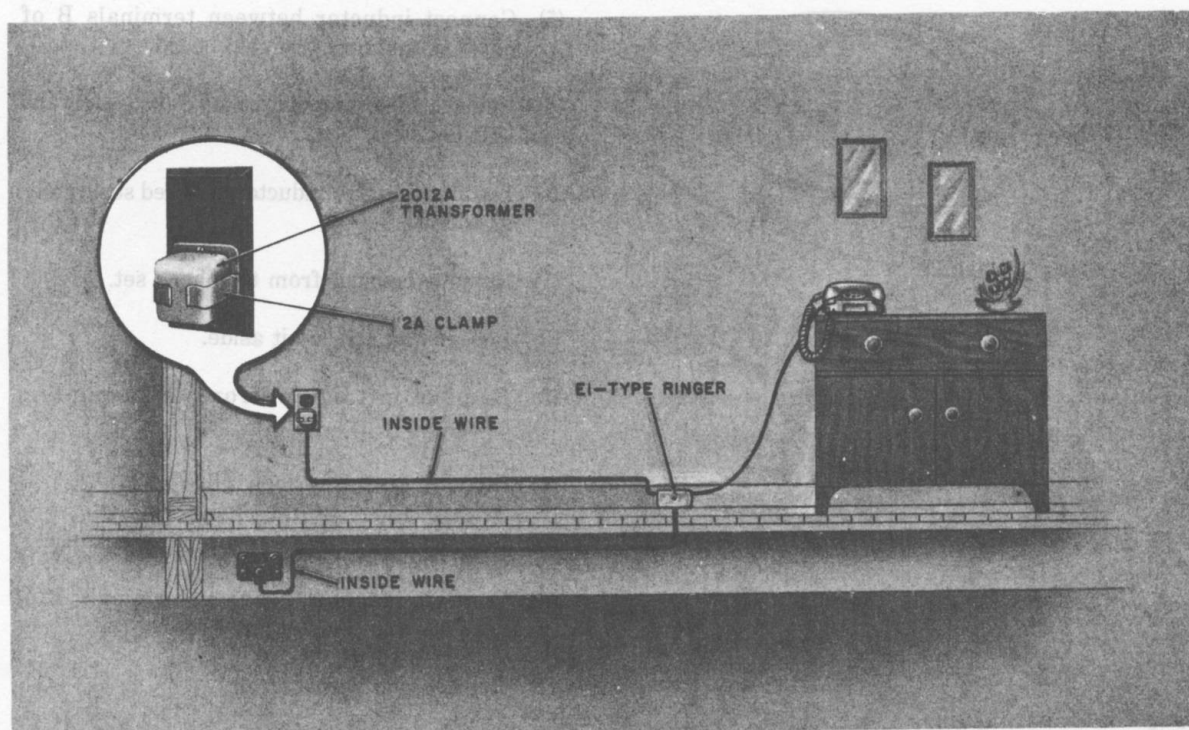


Fig. 5—Typical Installation of 701B Telephone Set

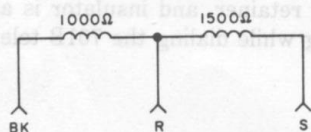


Fig. 6—Schematic For 1610A or 1635A Inductor

Cold-Cathode Tube

3.13 If 4-party selective or 8-party semiselective service is desired, a 425A or 426A cold-cathode tube may be ordered and installed in the base of 701B or 702B telephone sets as follows (Fig. 12):

- (1) Remove telephone set housing.
- (2) Remove dial.
- (3) Remove and discard the mounting screw furnished as part of the electron tube.

- (4) Install and connect tube as shown in Fig. 14 and Table B for 701B or Fig. 15 and Table C for 702B telephone set.

- (5) Replace dial and housing.

10A or 11A Ringing Range Extender

3.14 The 10A or 11A extender can be used to replace the 426A cold-cathode gas tube in the 702-type telephone set on long subscriber loops. The 10A or 11A is not intended as a general replacement for the 426A tube but should only be used on long loops where increased ringing range is required.

3.15 The 10A extender is to be used for 4-party full selective and 8-party semiselective ringing on loops greater than 1600 ohms (if used on shorter loops it may cause pretrip problems). Make connections as shown in Table C.

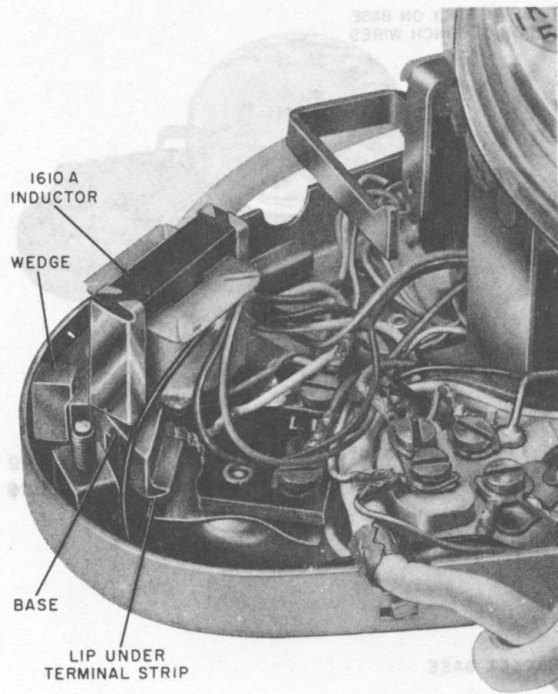


Fig. 7—Location of 1610A Inductor

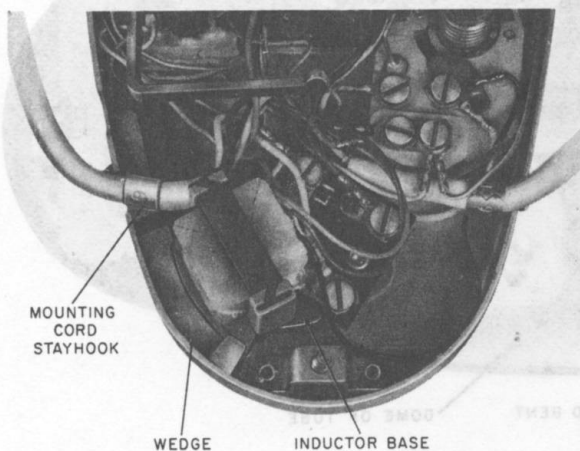


Fig. 8—Top View, Location of Wedge



For negative parties, the (R) lead should always be connected to ground to avoid the possibility of bell tap.

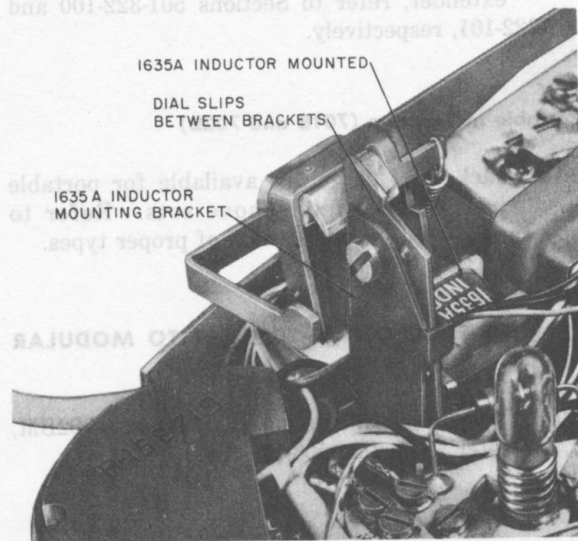


Fig. 9—1635A Inductor Mounted in 701B Telephone Set

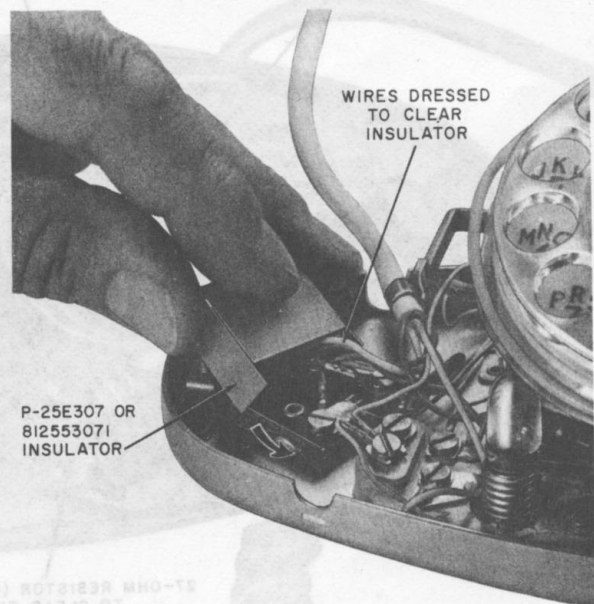


Fig. 10—Placing Inductor Over Terminal

3.16 The 11A extender may be used on all grounded ringers including those used in 4-party full selective and 8-party semiselective ringing service.

SECTION 502-701-100

3.17 For additional information on 10A and 11A extender, refer to Sections 501-322-100 and 501-322-101, respectively.

Portable Installation (701B and 702B)

3.18 Jacks and plugs are available for portable installation of telephone sets. Refer to appropriate section for selection of proper types.

4. MODIFICATION OF 702B SET TO MODULAR CONCEPT

4.01 To convert an existing 702B set to a 702BM, refer to Section 503-100-100.

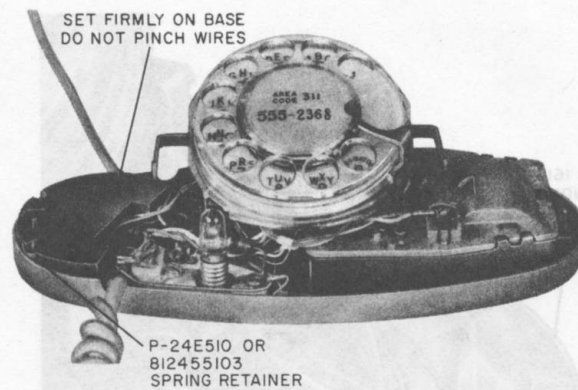


Fig. 11—Location of P-24E510 or 812455103 Spring Retainer and P-15E719 or 811557198 Weight

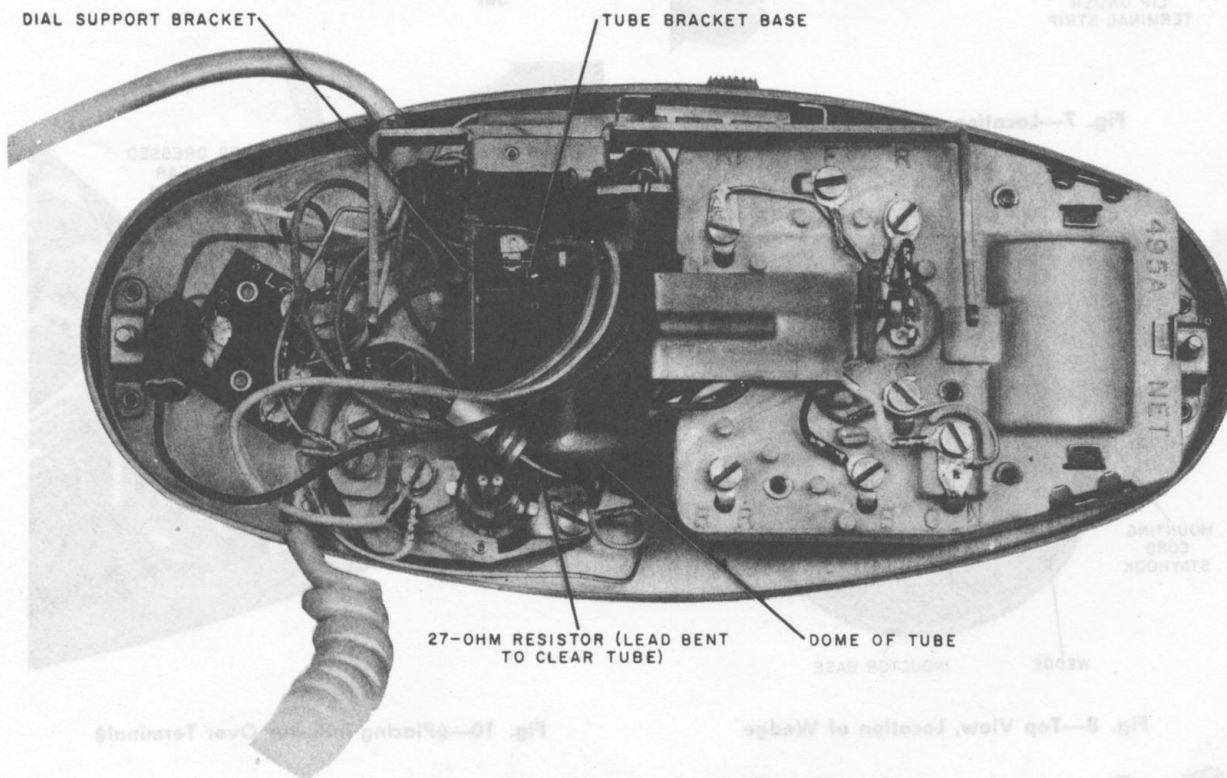


Fig. 12—Location of Cold-Cathode Tube in 701B Telephone Set



Fig. 13— Modification of Housing

5. MAINTENANCE

5.01 Maintenance of the 701B, 702B, and 702BM PRINCESS telephone sets is limited to replacing defective components (Table A), burnishing or adjusting line switch contacts, and modifying housings per 5.04.

5. MAINTENANCE

5.01 Maintenance of the 701B, 702B, and 702BM PRINCESS telephone sets is limited to replacing defective components (Table A), burnishing or adjusting line switch contacts, and modifying housings per 5.04.

5.02 Refer to sections covering dials, handsets, cords, ringers, networks, line keys, etc, for maintenance of these components.

5.03 Housings, dial plates, and handsets may be cleaned with a damp KS-2423 cloth. ***Do not use scouring cleaners on colored components as this may damage finish.***

5.04 These housings manufactured from 1970 through 1974 must be modified due to a clearance problem, if they are used with a base containing a 4228F network. Modify as follows:

- (1) Using diagonal side cutters, clip off a portion of the "plunger-well snap-tabs," which interfere with the network, as shown in Fig. 13.

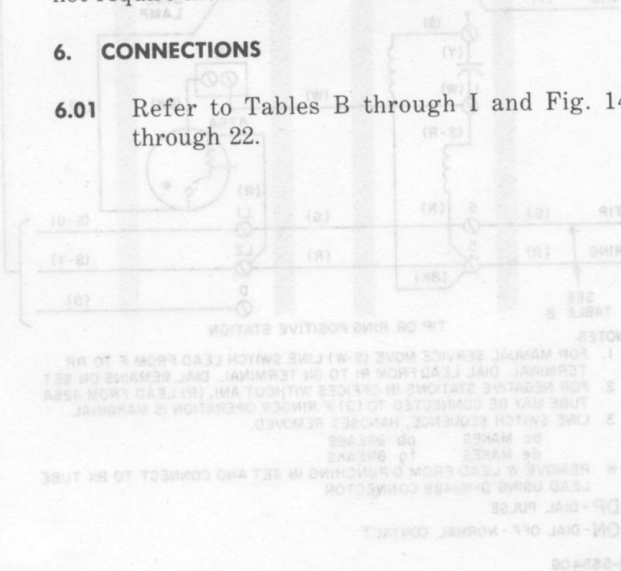
Note: Tabs should be cut at an angle, leaving 1/16-inch at the plunger well. Tabs longer than 1/16-inch will cause the plunger to bind when housing is installed. Tabs less than 1/16-inch will permit plunger to fall through.

5.05 Housings manufactured prior to 1970 have no tabs.

5.06 Housings manufactured after 1974, identified by an embossed "N" inside the housing, do not require modification.

6. CONNECTIONS

6.01 Refer to Tables B through I and Fig. 14 through 22.



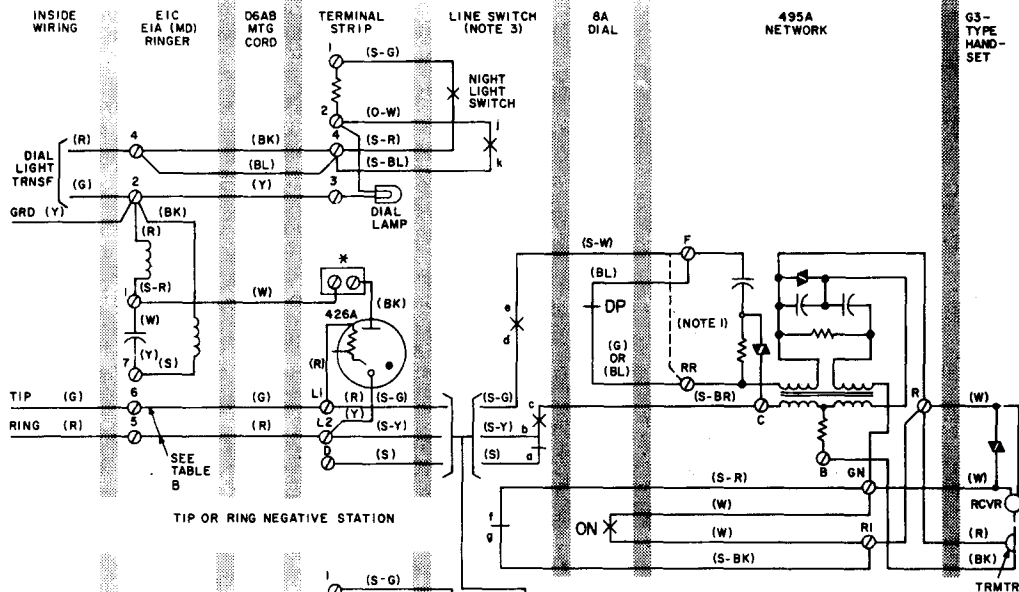
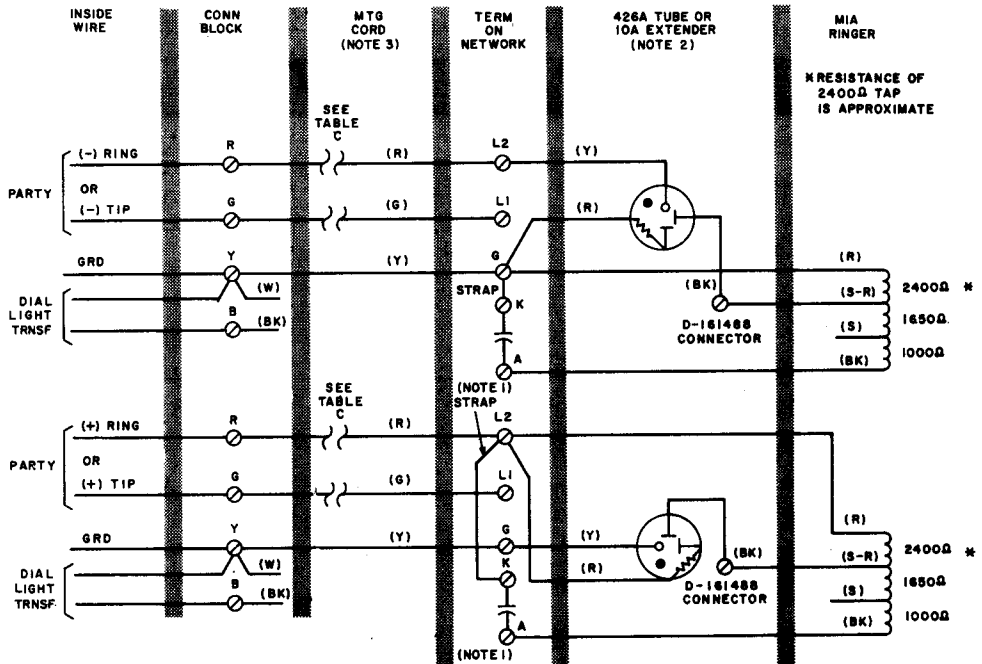


TABLE B
4-PARTY SELECTIVE AND
8-PARTY SEMISELECTIVE
SERVICE (701B)

LOCATION	WIRE OR LEAD	COLOR	NEGATIVE STATIONS		POSITIVE STATIONS		
			1 & 5	2 & 6	3 & 7	4 & 8	
Terminals on EIC or EIA (MD) Ringer	Line	Ring	R	5	6	5	6
		Tip	G	6	5	6	5
		Grd	Y	2	2	2	2
	Ringer Coil Leads	R	2	2	5	5	
		S-R	1	1	1	1	
		S	7	7	7	7	
	Capacitor Leads	BK	2	2	5	5	
		Y	7	7	7	7	
		W	1	1	1	1	
	Mtg Cord	R	5	6	5	5	
		G	6	6	6	6	
		W	1	1	1	1	
		Y	2	2	2	2	
		BL	4	4	4	4	
		BK	4	4	4	4	
Terminals in 701B Telephone Set	2012A or KS-16184 Trans	G	2	2	2	2	
		R	4	4	4	4	
		R	L2	L2	L2	L2	
		G	L1	L1	L1	L1	
		W	*	*	*	*	
		Y	3	3	3	3	
	426A Tube Leads	BL	4	4	4	4	
		BK	4	4	4	4	
		BK	*	*	*	*	
		R	L1	L1	L2	L2	
		Y	L2	L2	3	3	

Fig. 14—701B Telephone Set With 426A Cold-Cathode Tube



NOTES:

1. REMOVE (S) LINE SWITCH LEAD, INSULATE AND STORE THE LEAD OR CONNECT TO SPARE TERMINAL.
2. CONNECTIONS SHOWN FOR 426A TUBE. FOR 10A EXTENDER CONNECTIONS, REFER TABLE C.

3. IF D4BT CORD IS USED, WIRE A STRAP (MIW CORD OR EQUIVALENT) FROM TERMINAL 3 OF THE LAMP TERMINAL BLOCK TO THE K TERMINAL FOR (-) RING AND TO THE G TERMINAL FOR (+) RING.

Fig. 15—702B Telephone Set With 426A Cold-Cathode Tube or 10A Extender

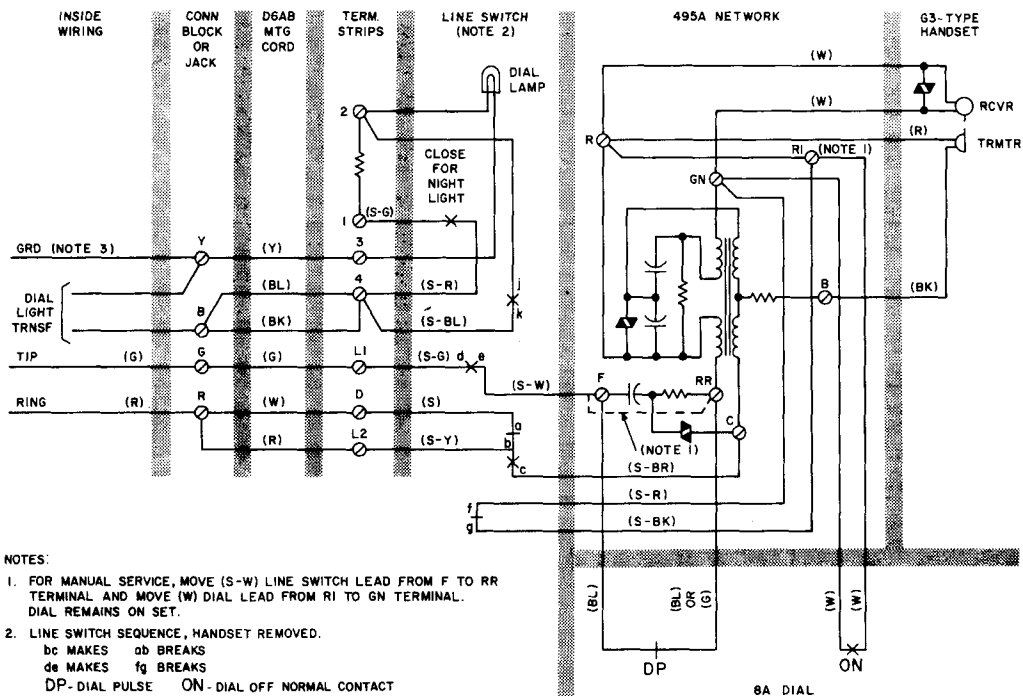
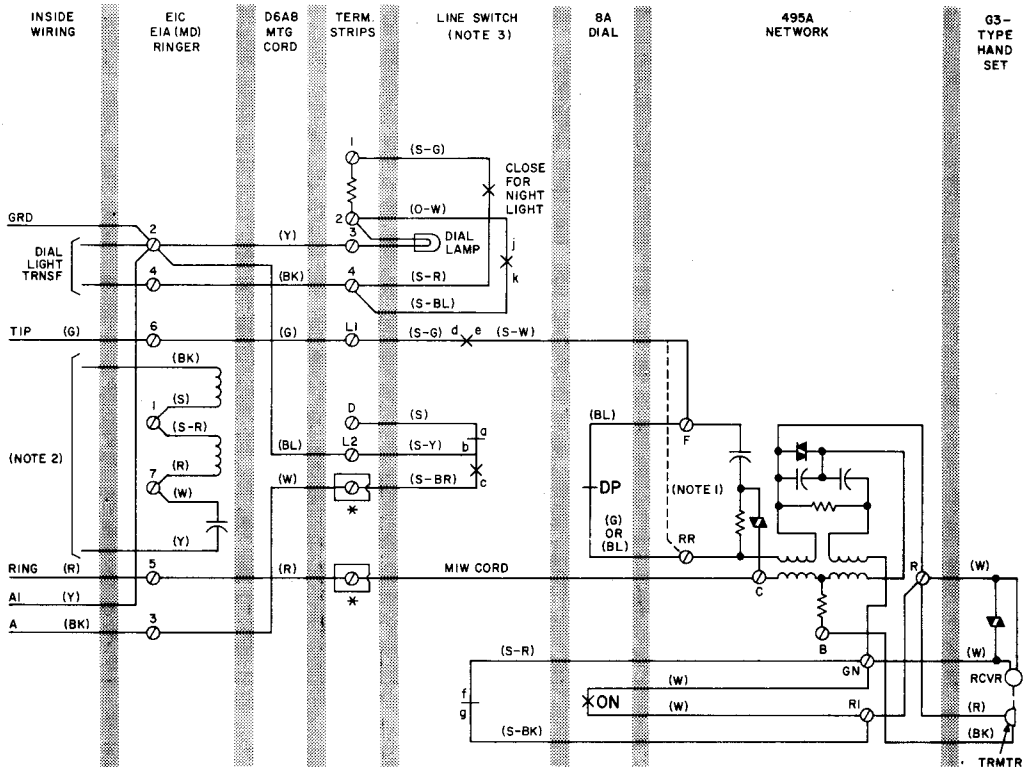


Fig. 16—701B Telephone Set, Factory Wiring



NOTES:

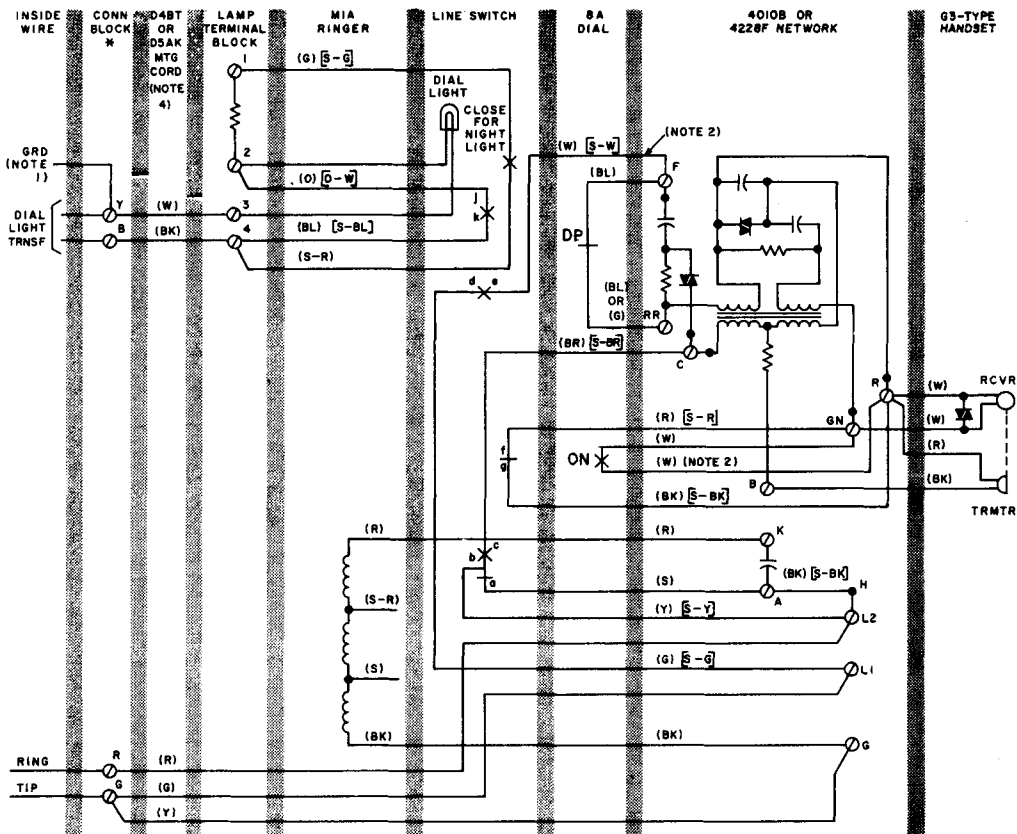
1. FOR MANUAL SERVICE, MOVE (S-W) LINE SWITCH LEAD FROM F TO RR TERMINAL AND MOVE (W) DIAL LEAD FROM RI TO GN TERMINAL. DIAL REMAINS ON SET.
2. FOR INDIVIDUAL LINE RINGER, CONNECT BK TO TIP (6) AND Y CAPACITOR LEAD TO RING (5). FOR COMMON AUDIBLE RINGER, CONNECT TO SIGNAL LEADS FROM EQUIPMENT CABINET, USING D-161488 CONNECTORS.
3. LINE SWITCH SEQUENCE, HANDSET REMOVED.
bc MAKES ob BREAKS
de MAKES fg BREAKS

* CONNECT WITH D-161488 CONNECTOR.

DP - DIAL PULSE CONTACT.

ON - DIAL OFF-NORMAL CONTACT.

Fig. 17—701B Telephone Set, Wired for 1A1 and 1A2 Key Telephone Systems



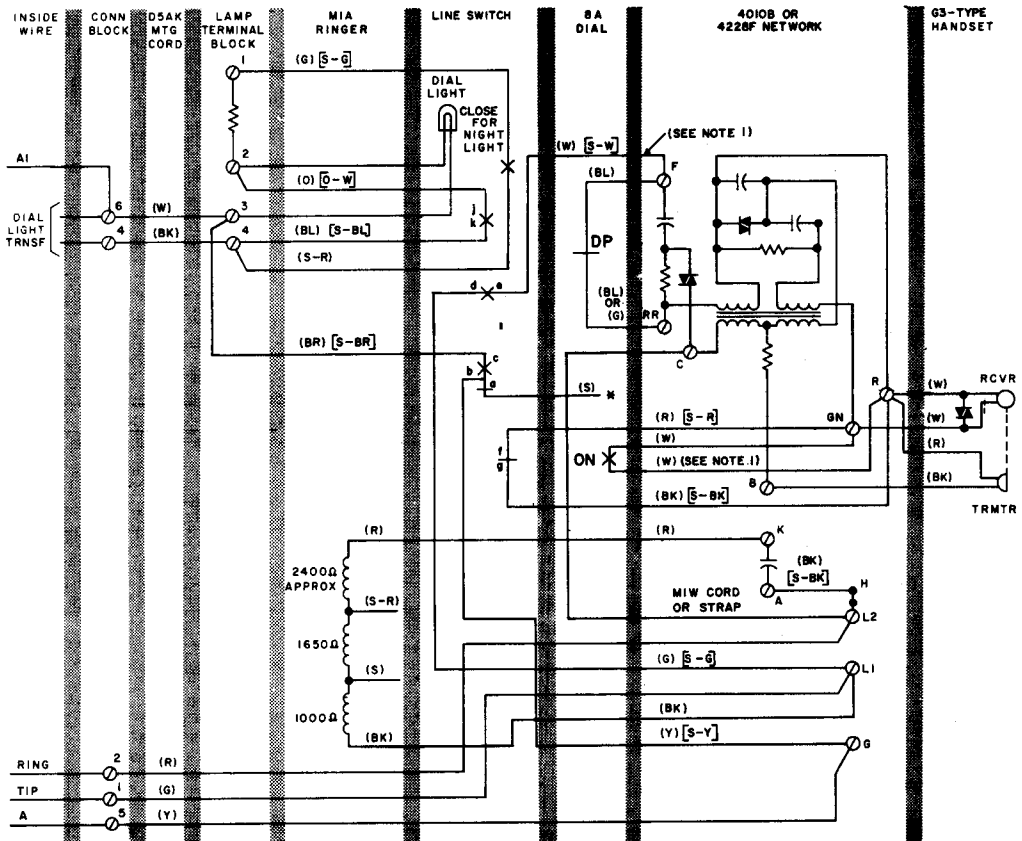
NOTES:

1. STATION GROUND SHALL BE PROVIDED FOR ALL INSTALLATIONS.
2. FOR MANUAL SERVICE, MOVE (W) [S-W] LINE SWITCH LEAD FROM F TO RR TERMINAL AND MOVE (W) DIAL LEAD FROM R TO GN TERMINAL. THE DIAL REMAINS ON THE SET.
3. LINE SWITCH SEQUENCE, HANDSET REMOVED.
 bc MAKES
 da MAKES
 ab BREAKS
 fg BREAKS
4. CONNECTIONS SHOWN ARE FOR DSAK MOUNTING CORD, FOR D4BT CORD SEE TABLE H.

* JACKS AND PLUGS ARE AVAILABLE FOR PORTABLE INSTALLATION. REFER TO DIVISION 461 FOR SELECTION OF APPROPRIATE TYPES.

() CURRENT COLOR CODE
 () MD COLOR CODE
 DP — DIAL PULSE CONTACT
 ON — DIAL OFF-NORMAL CONTACT

Fig. 18—702B Telephone Set, Factory Wiring



WIRING CHANGES FOR 1A1 AND 1A2

LEAD OR CONDUCTOR	FROM	TO
RINGER	(BK)	G
	(S)	A
LINE SWITCH	(S-Y) (Y)	L2
	(S-BR) (BR)	C
STRAP	(BK)	L2

NOTES:

1. FOR MANUAL SERVICE, MOVE (W) [S-W] LINE SWITCH LEAD FROM F TO RR TERMINAL, AND MOVE (W) DIAL LEAD FROM R TO GN TERMINAL. THE DIAL REMAINS ON THE SET.
2. LINE SWITCH SEQUENCE, HANDSET REMOVED.

bc MAKES

de MAKES

ab BREAKS

fg BREAKS

* INSULATE AND STORE.

() CURRENT COLOR CODE.

c) MD COLOR CODE.

DP - DIAL PULSE CONTACT

ON - DIAL OFF-NORMAL CONTACT

Fig. 19—702B Telephone Set Wired for 1A1 and 1A2 Key Telephone Systems

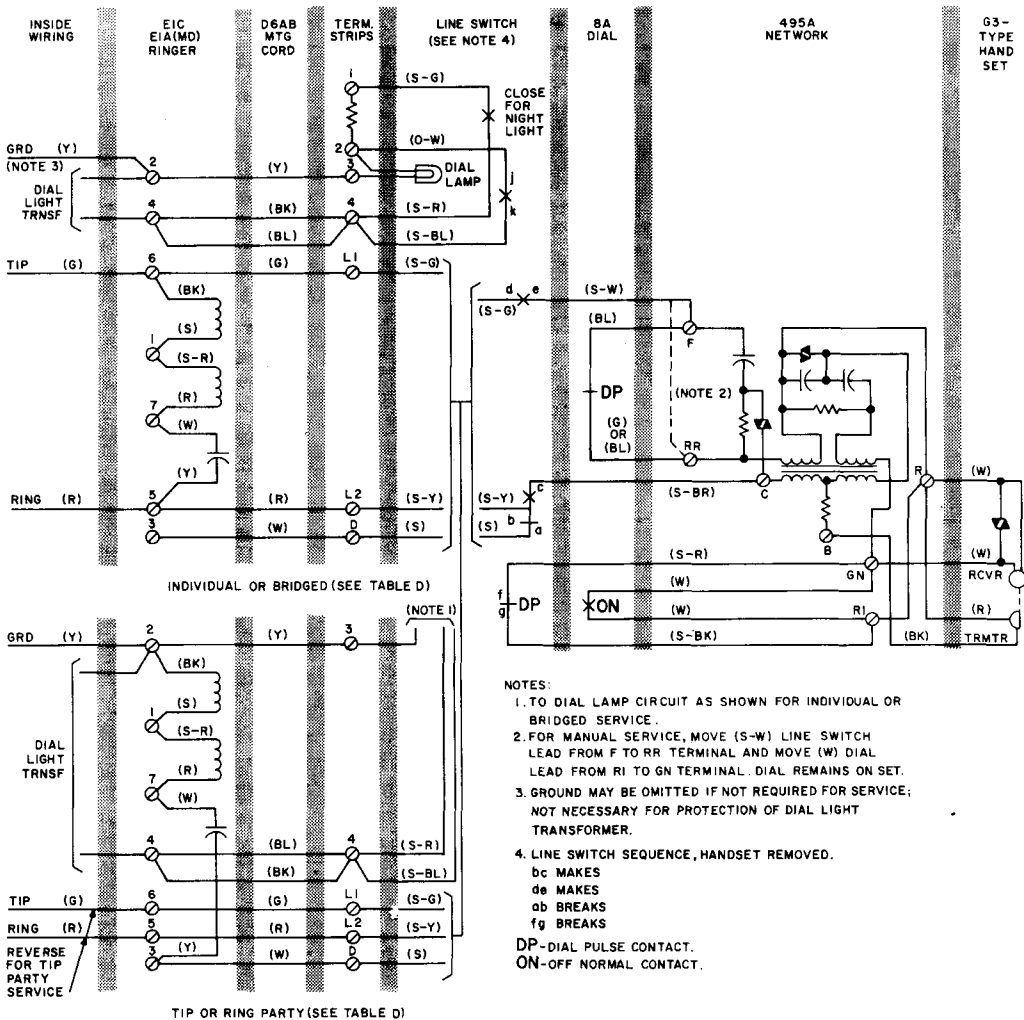


Fig. 20—701B Telephone Set With E1 Ringer, Connections For Bridged, Ring, or Tip Party Service

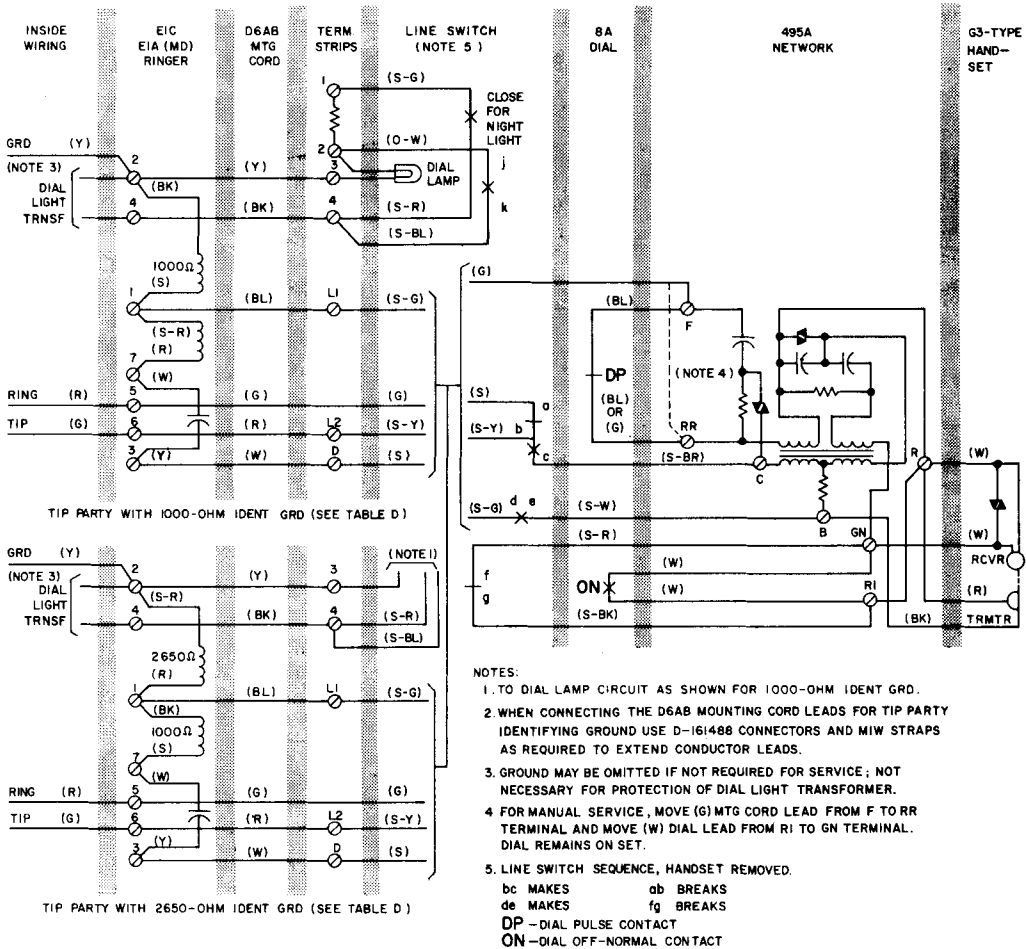
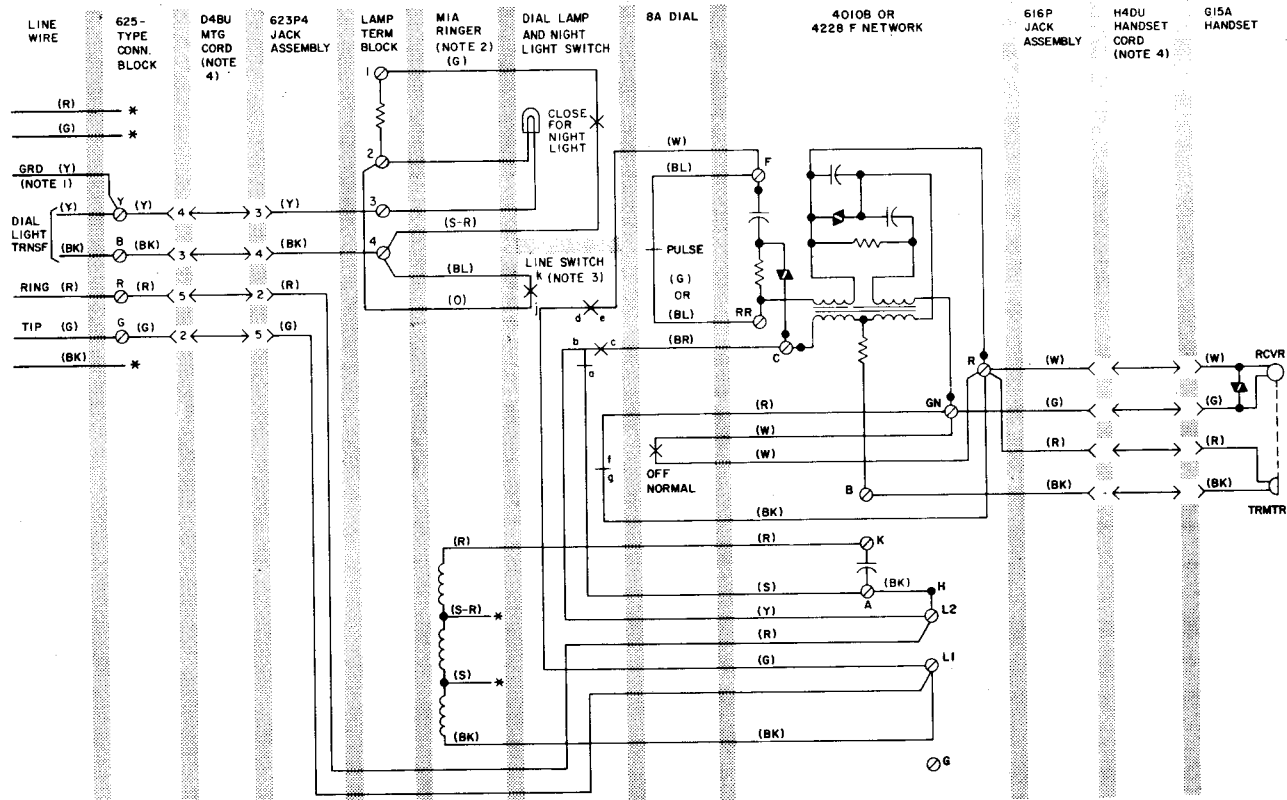


Fig. 21—701B Telephone Set With EIC or E1A (MD) Ringer, Connections Tip Party Identification



NOTES:

1. STATION GROUND SHALL BE PROVIDED FOR ALL INSTALLATIONS.
2. SET IS FACTORY WIRED FOR BRIDGED SERVICE. FOR OTHER CLASSES OF SERVICE SEE TABLE 1.

3. LINE SWITCH OFF-HOOK SEQUENCE
bc MAKES ab BREAKS
de MAKES fg BREAKS
jk MAKES

4. ORDER SEPARATELY

* INSULATED AND STORED

Fig. 22— 702BM Telephone Set, Factory Wiring

TABLE C
4-PARTY SELECTIVE AND 8-PARTY
SEMISELECTIVE SERVICE (702B)
USING 10A (MD) EXTENDER

WIRE OR LEAD	COLOR	- RING (NOTE 1)	+ RING (NOTE 1)
Mounting Cord at Conn. Block	R G Y	R G Y	R G Y
Inside Wire or Mounting Cord at Set Term	R G Y	L2 L1 G	L2 L1 G
Ringer Leads	R S-R S BK	G Note 2 * A†	L2 Note 2 * A†
10A Extender Leads	R Y BK	G L2 Note 2	L2 G Note 2
Strap	BK	K-G†	H-K

Notes:

1. Reverse (R) and (G) mounting cord leads at connector block for tip party connection.
2. Connect (BK) lead of 10A to (S-R) lead of ringer with D-161488 connector (not furnished with Extender) and insulate.

* Insulate and store.

† Use M1W Cord or equivalent (not furnished with Extender) and insulate and store (BK) strap.

‡ Remove (S) line switch lead from terminal A, insulate and store.

TABLE D

701B TELEPHONE SET CONNECTIONS WITH E1C OR E1A (MD) RINGER

WIRE OR LEAD		COLOR	INDIV OR BRIDGED	RING PARTY †	TIP PARTY WITH IDENT GRD	
					1000Ω	2650Ω
Line or Ringer	Ring	R	5	5	5	5
	Tip	G	6	6	6	6
	Grd	Y	2	2	2	2
Ringer		R	7	7	7	1
		S-R	1	1	1	2
		BK	6	2	2	1
		S	1	1	1	7
Capacitor in Ringer		W	7	7	7	7
		Y	5	3	3	3
Trnsf Leads		Y	2	2	2	2
		BK	4	4	4	4
Mtg Cord at Ringer		R	5	5	6	6
		G	6	6	5	5
		Y	2	2	2	2
		BL	4	4	1	1
		W	3	3	3	3
		BK	4	4	4	4
Mtg Cord at Set		R	L2	L2	L2	L2
		G	L1	L1	F*	F*
		Y	3	3	3	3
		BL	4	4	L1	L1
		W	D	D	D	D
		BK	4	4	4	4
Line Switch		S-BR	C*	C*	C*	C*
		S-G	L1	L1	L1	L1
		S-W	F*	F*	B*	B*

* Terminal on network.

† For tip party service reverse (R) and (G) mounting cord leads at set.

TABLE E
701B TELEPHONE SET CONNECTIONS WITH F1A RINGER

WIRE OR LEAD			COLOR	INDIVIDUAL OR BRIDGED	RING PARTY	TIP PARTY	TIP PARTY WITH IDENTIFYING GROUND (NOTE 2)	
							1000Ω	2650Ω
F1A Ringer Term.	Line	Ring	R	6	6	1	1	1
		Tip	G	4	1	6	5	5
		Grd	Y	1	4	4	4	4
	Ringer Coil		R	7	7	7	7	2
			S-R	2	2	2	2	4
			BK	4	4	4	4	2
			S	2	2	2	2	7
			BL	4	4	4	4	4
	Network Straps	G	R	7	7	7	7	7
		A	G	6	6	6	6	6
		B						
	Dial Light Trnsf		I	1	4	4	4	4
			2	3	3	3	3	3
	Mtg Cord		R	6	6	6	5	5
			G	4	1	1	1	1
			Y	1	4	4	4	4
			BL	3	3	3	2	2
			W	5	5	5	6	6
			BK	3	3	3	3	3
Set Term.	Mtg Cord		R	L2	L2	L2	L2	L2
			G	L1	L1	L1	C*	C*
			Y	3	3	3	3	3
			BL	4	4	4	L1	L1
			W	D	D	D	D	D
			BK	4	4	4	4	4
	Line Switch		S-BR	C*	C*	C*	F*	F*
			S-G	L1	L1	L1	L1	L1
			S-W	F*	F*	F*	B*	B*



The F1A ringer is not intended to be used with 4-party selective or 8-party semiselective service, or any other service where code ringing would not be distinguishable in CHIME position. For schematic drawing and maintenance information on F1A ringer, see section on the F1A ringer.

- Notes:**
1. Ringer wired at factory for individual or bridged, ring, and tip party service.
 2. Connections include modification to prevent false billing due to incomplete hangup.
 3. When connecting the D6AB mounting cord leads for tip party identifying ground use D-161488 connectors and M1W straps as required to extend conductor leads.

* Terminals on network of telephone set.

TABLE F

701B TELEPHONE SET CONNECTIONS WITH INDUCTOR

WIRE OR LEAD		COLOR	INDIV OR BRIDGED	TIP PARTY ‡	TIP PARTY WITH IDENT GRD	
					1000Ω	2500Ω
Line Wire at Conn Block	Ring Tip Grd	R	R	R	R	R
		G	G	G	G	G
		Y	Y	Y	Y	Y
Trnsf Leads at Conn Block		Y BK	Y B	Y B	Y B	Y B
Mtg Cord at Conn Block		R	R	R	G	G
		G	G	G	R	R
		Y	Y	Y	Y	Y
		BL	B	B	B	B
		W	R	R	G	G
		BK	B	B	B	B
Mtg Cord at Set		R	L2	L2	L2	L2
		G	L1	L1	C†	C†
		Y	3	3	3	3
		BL	4	4	4	4
		W	D	D	D	D
		BK	4	4	4	4
Inductor Leads at Set		BK			3	3
		R			L1	*
		S			L1	L1
Line Switch		S-W	F†	F†	B†	B†
		S-BR	C†	C†	F†	F†
		S-G	L1†	L1	L1	L1

* Insulate and store or connect to spare terminal.

† Terminal on network.

‡ For ring party service reverse (R) and (G) mounting cord leads at set.

Notes:

1. Connections include modifications to prevent false billing due to incomplete hang-up.
2. When connecting the D6AB mounting cord leads for tip party identifying ground use D-161488 connectors and M1W straps as required to extend conductor leads.

TABLE G
LINE AND RINGER CONNECTIONS
702B TELEPHONE SET WITH D5AK MOUNTING CORD

WIRE OR LEAD		INDIVIDUAL OR BRIDGED ‡	RING PARTY ‡	TIP PARTY		
				NO IDENT GRD	IDENTIFYING GROUND	
					1000 OHMS	2650 OHMS
Inside Wire at Conn Block	Ring	R	R	R	R	R
	Tip	G	G	G	G	G
	Grd	Y	Y	Y	Y	Y
Dial Light Transformer	1	Y	Y	Y	Y	Y
	2	B	B	B	B	B
D5AK Mtg Cord at Conn Block	(R)	R	R	G	G	G
	(G)	G	G	R	R	R
	(Y)	G	Y	Y	Y	Y
	(BK)	B	B	B	B	B
	(W)	Y	Y	Y	Y	Y
D5AK Mtg Cord at Set Terminals	(R)	L2	L2	L2	L2	L2
	(G)	L1	L1	L1	F	F
	(Y)	G	G	G	G	G
	(BK)	4†	4†	4†	4†	4†
	(W)	3†	3†	3†	3†	3†
Ringer Leads	(R)	K	K	K	K	K
	(BK)	G	G	G	G	G
	(S)	*	*	*	L1	*
	(S-R)	*	*	*	*	L1
Line Switch	(W)	F	F	F	B	B
Strap from H	(BK)	A	A	A	*	*

* Insulated and stored.

† Terminals on lamp terminal block.

‡ Factory-wired for bridged or ring party

- Note:*
1. To silence ringer permanently (for all classes of service), disconnect (R) ringer lead from K; insulate and store or use spare terminal.
 2. When connecting the D5AK mounting cord leads for tip party identifying ground, use D-161488 connectors and MJW straps as required to extend conductor leads.

TABLE H

LINE AND RINGER CONNECTIONS

702B TELEPHONE SET WITH D4BT MOUNTING CORD

WIRE OR LEAD		INDIVIDUAL OR BRIDGED	RING PARTY	TIP PARTY		
				NO IDENT GRD	IDENTIFYING GROUND	
					1000 OHMS	2650 OHMS
Inside Wire at Conn Block	Ring	R	R	R	R	R
	Tip	G	G	G	G	G
	Grd	Y	Y	Y	Y	Y
Dial Light Transformer	1	Y	Y	Y	Y	Y
	2	B	B	B	B	B
D4BT Mtg Cord at Conn Block	(R)	R	R	G	G	G
	(G)	G	G	R	R	R
	(Y)	Y	Y	Y	Y	Y
	(BK)	B	B	B	B	B
D4BT Mtg Cord at Set Terminals	(R)	L2	L2	L2	L2	L2
	(G)	L1	L1	L1	F	F
	(Y)	3†	3†	3†	3†	3†
	(BK)	4†	4†	4†	4†	4†
Ringer Leads	(R)	K	K	K	K	K
	(BK)	L1	3†	3†	3†	3†
	(S)	*	*	*	L1	*
	(S-R)	*	*	*	*	L1
Line Switch	(W)	F	F	F	B	B
Strap from H	(BK)	A	A	A	*	*

* Insulated and stored.

† Terminals on lamp terminal block.

Note: To silence ringer permanently (for all classes of service), disconnect (R) ringer lead from K; insulate and store or use spare terminal.

TABLE I
702BM TELEPHONE SET LINE AND RINGER CONNECTIONS

WIRE OR LEAD		INDIV OR BRIDGED (NOTE 3)	RING PARTY	TIP PARTY		
				NO IDENT GRD	IDENTIFYING GROUND (NOTE 1)	
					1000 OHMS	2650 OHMS
Dial Light Transformer	1	Y	Y	Y	Y	Y
	2	B	B	B	B	B
623P4 Jack Assembly in Set	R	L2	L2	L1	F	F
	G	L1	L1	L2	L2	L2
	BK	4†	4†	4†	4†	4†
	Y	3†	3†	3†	3†	3†
Ringer Leads (Note 2)	R	K	K	K	K	K
	BK	L1	3†	3†	3†	3†
	S	*	*	*	L1	*
	S-R	*	*	*	*	L1
Line Switch	W	F	F	F	B	B
Strap from H of Net.	BK	A	A	A	*	*

* Insulated and stored.

† Terminals on lamp terminal block.

Notes:

1. For tip party service with identifying ground, remove insulate and store (BK) strap between network terminals A and H.
2. To silence ringer permanently: For all classes of service except tip party identification, move (BK) ringer lead from L1 to G of network. For 1000Ω or 2656Ω identifying ground, disconnect (R) ringer lead from K, insulate and store or use spare terminal.
3. Sets are factory-wired for bridged service.