

## TELEPHONE SETS—322-TYPE

### 1. GENERAL

**1.01** This section covers the identification, installation, connections, and maintenance of 322-type (MD) telephone sets. These sets are replaced by AL1 telephone bases.

**1.02** This section is reissued to show:

- 322-type telephone sets rated MD
- 4E buzzer rated MD
- 9C buzzer as replacement for 4E buzzer

### 2. IDENTIFICATION

**2.01** The 322C is a flush-mounted, wall type dial telephone set designed to be used in elevators. It may also be used in corridors and in building entrances (Fig. 1).

**2.02** To convert a 322C telephone set from dial to manual (322A) replace the 6A dial with a 94A apparatus bank.

**2.03** Early production of 322-type telephone sets were equipped with a 4E (MD) buzzer. Later version 322C telephone sets are equipped with a 9C buzzer which consists of a 9A buzzer, 220A adapter, and (3) 802592675 or P-259267 screws.

**2.04** The 9C or 4E buzzer and capacitor provide a low impedance ringing bridge and can be used on individual lines and PBX stations only if there are no additional ringing bridges on the same line.

**2.05** The 9C or 4E buzzer is used instead of a ringer to conserve space. The 9C buzzer can be biased to avoid tapping while dialing or during switchhook operations. The 4E buzzer cannot be biased.

**2.06** Use of low impedance buzzer in 322-type telephone sets at PBX stations generally will not permit through dialing on night connections.



Fig. 1—322-Type Telephone Set, Front View

However, should the night connections feature be required, or an extension station or an extension ringer be provided, disconnect buzzer and provide a high impedance ringing bridge with a 687A subscriber set or equivalent, at a nearby location (in cab if an elevator installation). Local ordinances may, in some cases, prohibit connecting elevator telephones as PBX stations.

**2.07** The D-95334 outlet boxes and D-95332 frames must be ordered separately and should be given to the customer for installation.

#### NOTICE

Not for use or disclosure outside the  
Bell System except under written agreement



### 3. INSTALLATION



*It is not permissible for a telephone company employee to enter any elevator shaft.*

#### Wiring

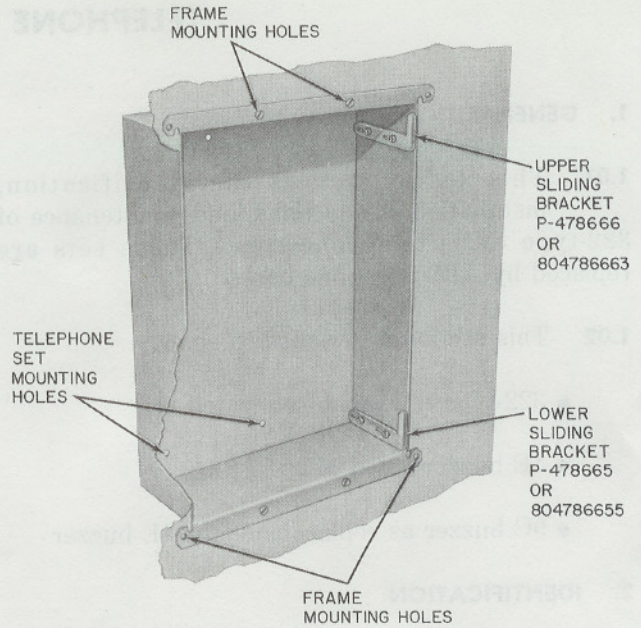
- 3.01** Elevator cable conductors should be provided, installed, and maintained by the customer.
- 3.02** These conductors may be in a separate trailer cable or be spare conductors in elevator signaling and control cables.
- 3.03** Mount terminals or connecting blocks at a location outside the elevator shaft where cable conductors and telephone station wires terminate.

#### Outlet Boxes

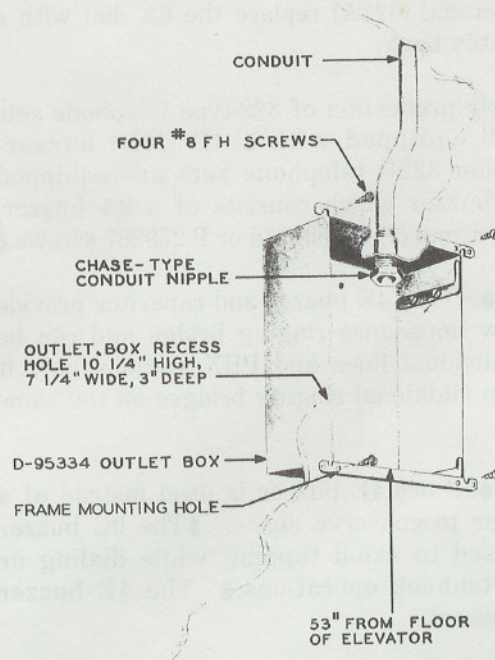
- 3.04** Outlet boxes furnished by the customer or telephone company should be installed by customer.

**Caution:** When outlet box is placed by customer, call his attention to the necessity of checking the clearances obtainable, especially regarding projection of outlet box into elevator shaft.

- 3.05** It is recommended that as a general proposition the standard D-95334 outlet box (Fig. 2) be mounted in a recess 10-1/4 inches high, 7-1/4 inches wide, 3 inches deep, and 53 inches from floor as illustrated in Fig. 3.
- 3.06** When outlet box is furnished by customer, mounting holes should be drilled and tapped for 8-32 machine screws in the same locations as those in the D-95334 outlet box, prior to being installed in its permanent location.
- 3.07** When 322-type telephone set is to be mounted in a door-equipped box, the minimum inside dimensions should be 7-1/4 inches wide, 10-1/4 inches high, and 3-1/2 inches deep.
- 3.08** Outlet box is not required where access in wall of a building meets the minimum size, and the back surface is of wood 3/4 inch thick so that telephone set may be attached to it with three



**Fig. 2—D-95334 Outlet Box**



**Fig. 3—Mounting of Outlet Box**



No. 8, 1-inch RH blued wood screws. Inside minimum dimensions should be 6-7/8 inches wide, 9-7/8 inches high, and 2-7/8 inches deep.

### Frames

- 3.09** Use a standard metal frame or wood molding to cover edges or recess.
- 3.10** The D-95322 frame is shown in Fig. 1.
- 3.11** The frame attaches to the outlet box with four 9/32-inch by 6-32 OH brass machine screws that are furnished with the frame.

### Brackets

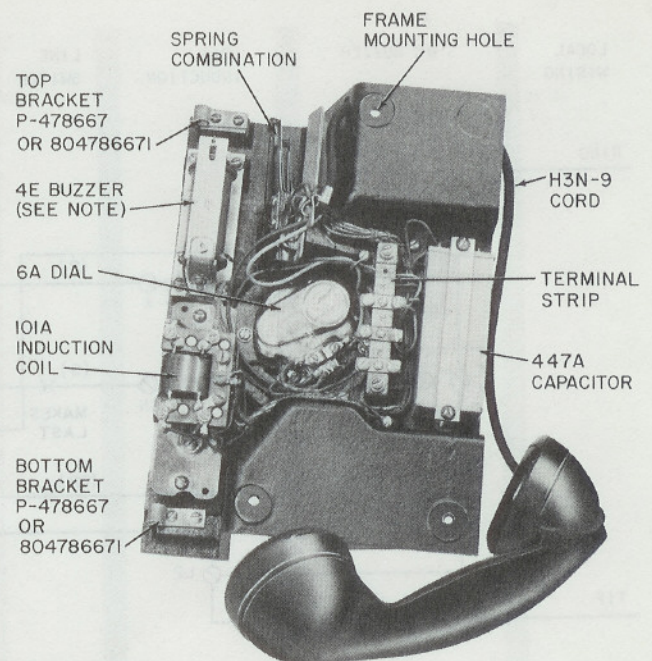
- 3.12** Two sliding brackets and four filister head machine screws are furnished with 322-type telephone set and are attached to outlet box at locations indicated in Fig. 2.
- 3.13** The right-angle projection on the 804786663 or P-478666 upper bracket is slightly longer than that on the lower bracket.
- 3.14** To support the 322-type set in a convenient position while making connections or adjustments, turn the set at a right-angle to the outlet box and place the 804786671 or P-478667 brackets (Fig. 4) over the 804786663 or P-478666 and 804786655 or P-478665 sliding brackets (Fig. 2).
- 3.15** Set must be removed from sliding brackets before it is attached to back of outlet box.

### Subscriber Sets

- 3.16** When a 687A subscriber set, or equivalent, is used to provide a high impedance ringing bridge, it should be located where it can be maintained from inside the elevator.
- 3.17** If the customer objects to having it protrude into the elevator, it will be necessary for him to provide and install a recess, outlet box, frame, or grill.

## 4. CONNECTIONS

- 4.01** For wiring and connections of 322-type telephone set, refer to Fig. 5 and 6.
- 4.02** Station wiring connects directly to terminals on induction coil.



NOTE:  
CURRENT PRODUCTION 322C TELEPHONE SETS  
ARE EQUIPPED WITH A 9C BUZZER.

**Fig. 4—322-Type Telephone Set, Rear View**

- 4.03** When connections are completed, remove set from sliding brackets, slide brackets back into box, place telephone set in outlet box, and attach to back of outlet box with three 3/8-inch by 8-32 BH machine screws that are furnished with telephone sets.

## 5. MAINTENANCE

- 5.01** Elevator sets should be maintained from within the elevator cab, and the telephone line from points outside the elevator shaft.
- 5.02** Report trouble in elevator cables between set and connecting block or terminal to the superintendent or other responsible persons in charge of elevator maintenance.
- 5.03** When maintenance work is required in the back of the 322-type telephone set, remove the three fasteners which attach the set to the back of the outlet box and support the set on the sliding brackets.
- 5.04** Table A lists the major replaceable components.



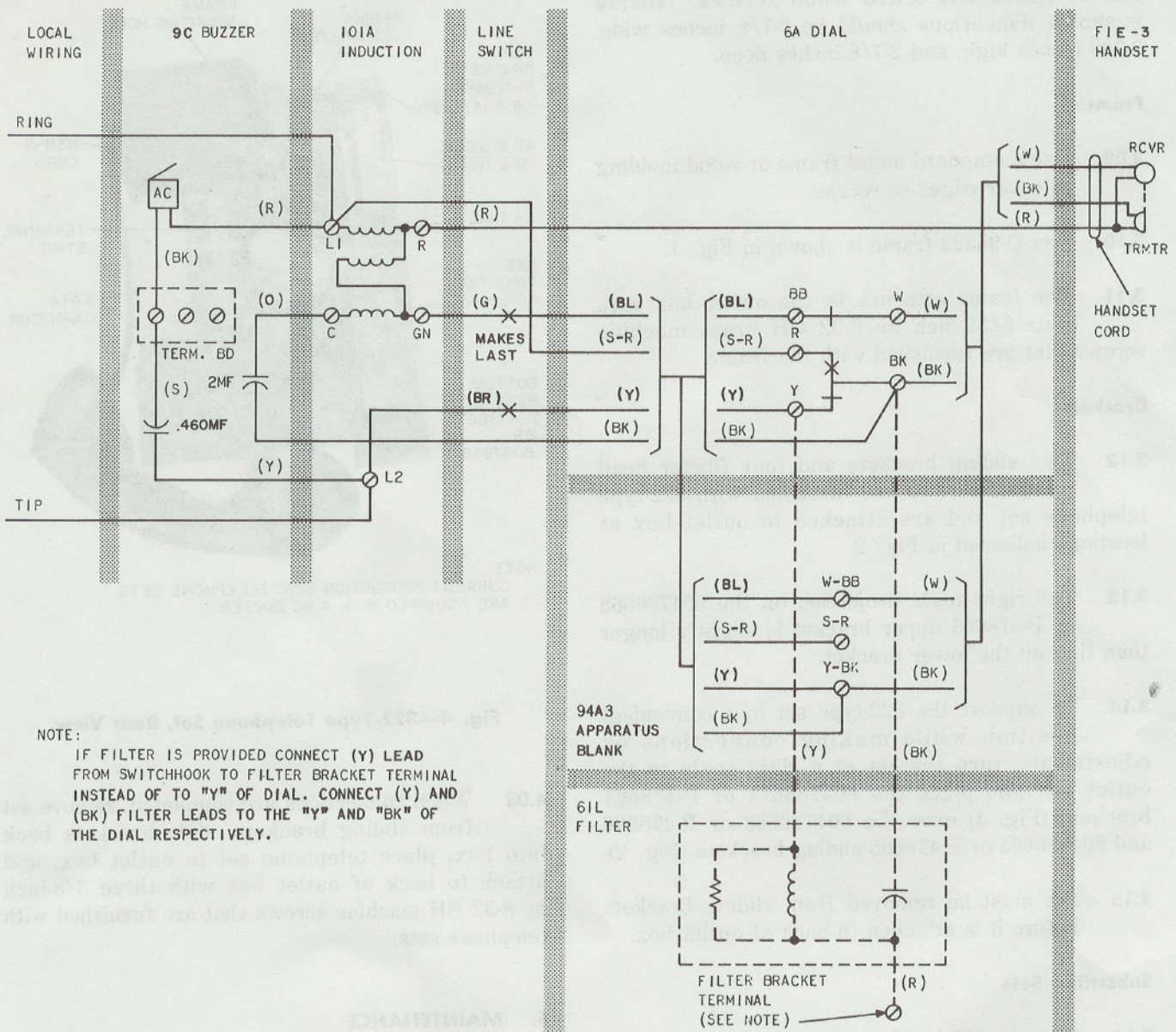


Fig. 5—Current 322-Type Telephone Set, Connections



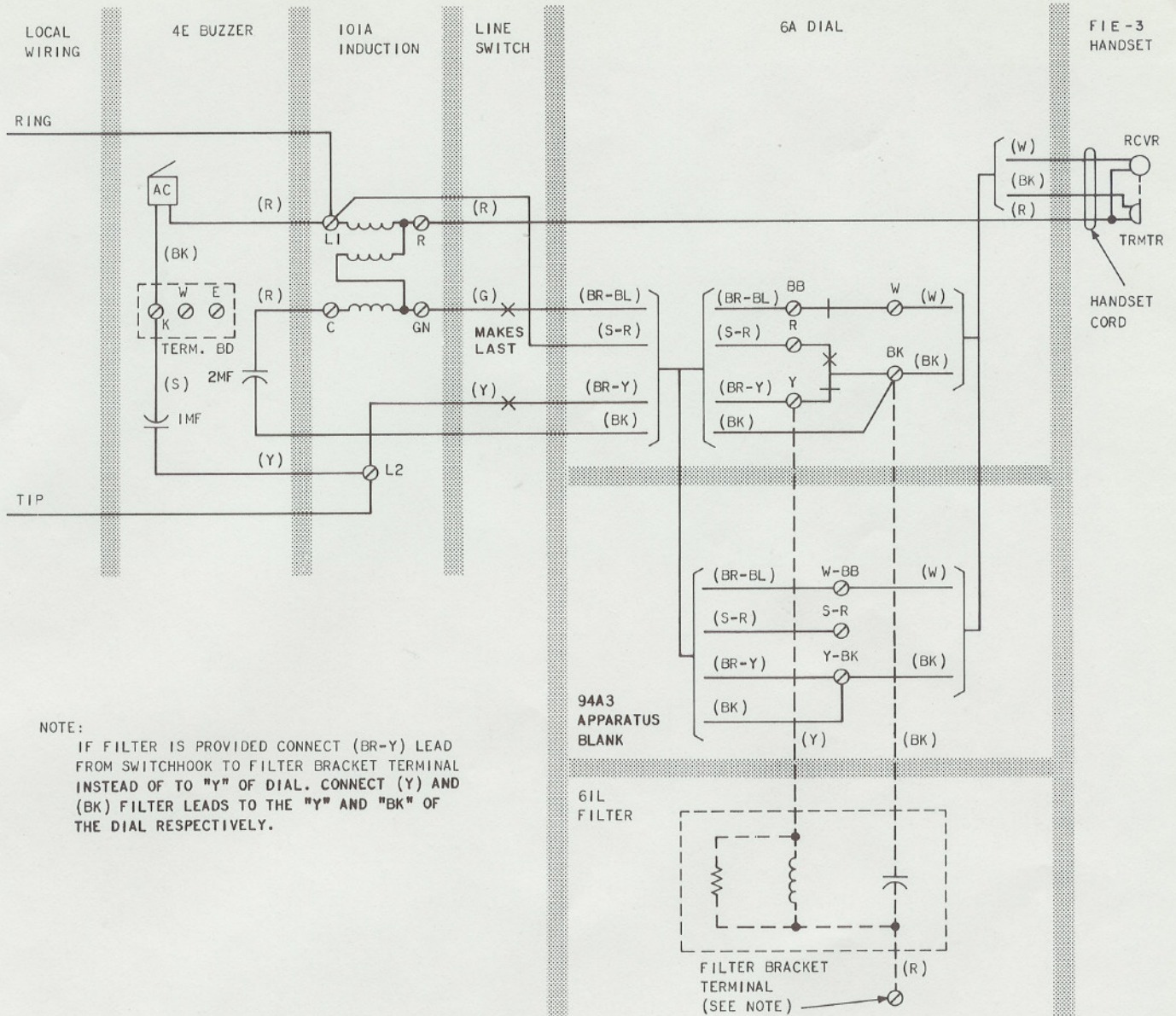


Fig. 6—Early 322-Type Telephone Set, Connections

## TABLE A

## COMPONENTS

HAND-SET	CORD (18")	APPARATUS BLANK	DIAL	INDUCTION COIL	BUZZER	CAPACITOR		OUTLET BOX	FRAME
						TALKING	RINGING		
F1E-3	H3N-9	94A-3	6A	101A	4E	147A (2 uf) or 447A (2 uf)	149A (1 uf) or 449A (1 uf)	D-95334	D-95332
					9C		575E (.460 uf)		