

TELEPHONE SETS—304A, C; 5304C
CONNECTIONS

NOTICE

This document is either
AT&T - Proprietary, or WESTERN
ELECTRIC - Proprietary

Pursuant to Judge Greene's Order of August 5, 1963,
beginning on January 1, 1964, AT&T will cease to use
"Bell" and the Bell symbol, with the exceptions as set
forth in that Order. Pursuant thereto, any reference to
"BELL" and/or the BELL symbol in this document is here-
by deleted and "expunged".

TABLE A
RINGER LEAD CONNECTIONS TO SILENCE RINGER PERMANENTLY

Class of Service		Ringer Leads			
		R	BK	S	S-R
Individual or Bridged Ring Party Tip Party — Flat Rate		K	K	E	E
Tip Party	Message Rate Zone Registration XBR with AMA	K	GRD	M	K
	SXS with AT SXS with AMA Mod XBR with AMA	M	K	K	GRD

TABLE B
LINE AND RINGER CONNECTIONS

Wire or Lead		Tip Party Identification Ground			
		Normal Connection		Ringer Reversal When Connected to Long Line Equipment	
		Message Rate Zone Registration XBR With AMA	Flat Rate SXS With AT SXS With AMA Mod XBR With AMA	Message Rate Zone Registration XBR With AMA	Flat Rate SXS With AT SXS With AMA XBR With AMA
Mounting Cord In Set	R	L1	L1	L1	L1
	G	L2	L2	L2	L2
	Y	GRD	GRD	GRD	GRD
Ringer Leads	R	K	M	RR	GRD
	BK	GRD	RR	M	K
	S	M	K	GRD	RR
	S-R	RR	GRD	K	M
Ringing Capacitor Lead Switchhook Lead	Y	L2	L2	L2	L2
	S	K	K	K	K
	G-R	L2	L2	L2	L2
Mounting Cord at Connecting Block	R	R	R	R	R
	G	G	G	G	G
	Y	Y	Y	Y	Y
Line Wire at Connecting Block	Ring	R	R	R	R
	Tip	G	G	G	G
	GRD	Y	Y	Y	Y

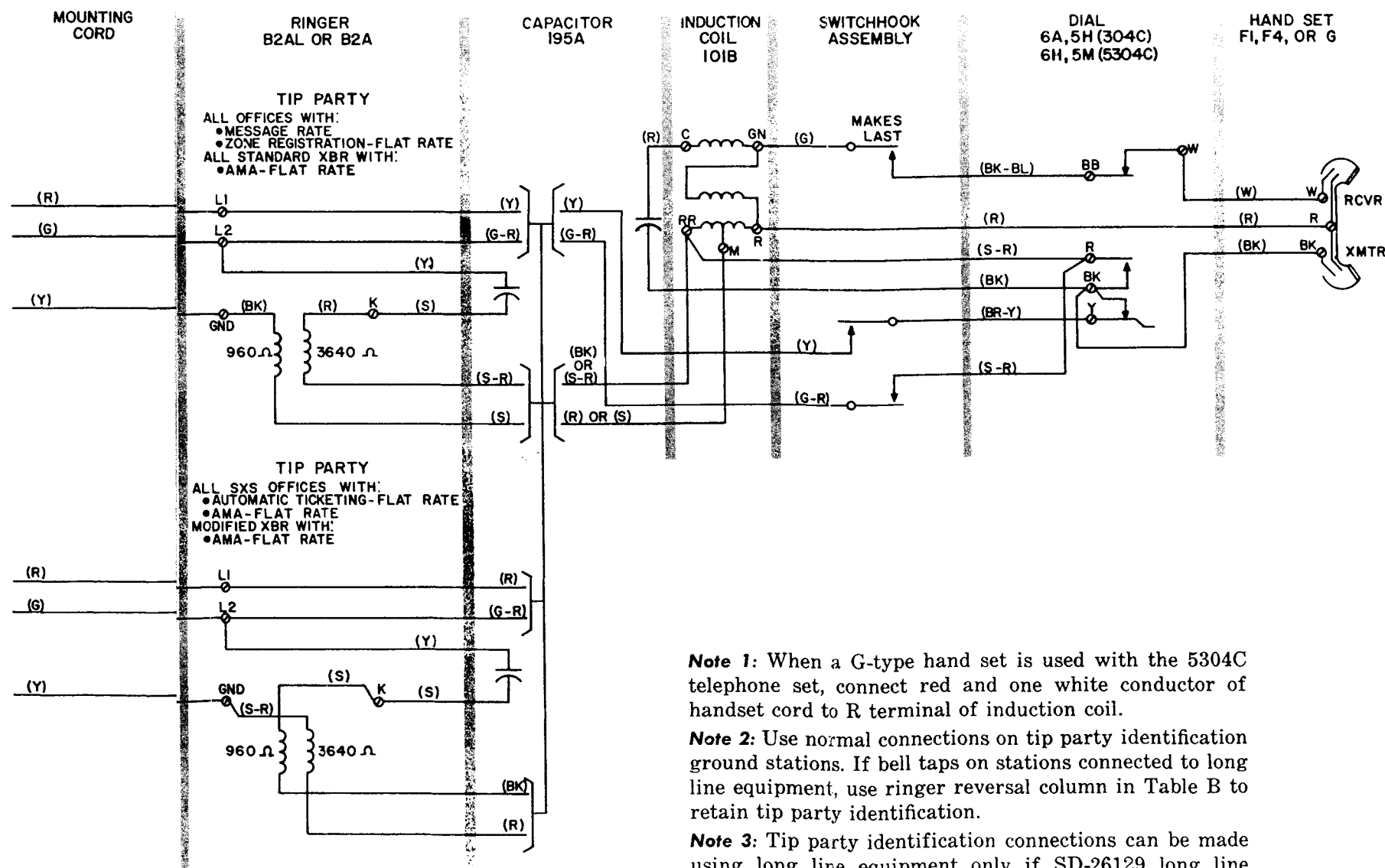


Fig. 1—304C and 5304C Telephone Sets (Tip Party Identification Required)

TABLE C
FILTER (OPTIONAL)

Type Filter*		Filter Leads	Filter Terminations
304C	5304C		
61P or 61L	61S	BK	BK of dial
		Y	Y of dial
		R	Filter bracket terminal †

* Not required for 304A (manual) set.

† Disconnect BR-Y lead from Y of dial and reconnect to filter bracket terminal.

TABLE D
LINE AND RINGER CONNECTIONS

Wire or Lead		Individual or Bridged	Ring Party All Classes of Service	Tip Party Flat Rate
Mounting Cord in Set	R	L1	L1	RR
	G	L2	RR	L1
	Y	GRD	GRD	GRD
Ringer Leads	R	L1	K	GRD
	BK	K	GRD	K
	S	GRD	L2	L2
	S-R	GRD	L2	L2
Ringing Capacitor Leads	Y	L2	L1	L1
	S	K	K	K
Switchhook Lead	G-R	RR	RR	RR
Mounting Cord at Connecting Block	R	R	R	R
	G	G	G	G
	Y	B	Y	Y
Line Wire at Connecting Block	Ring	R	R	R
	Tip	G	G	G
	GRD	Y	Y	Y

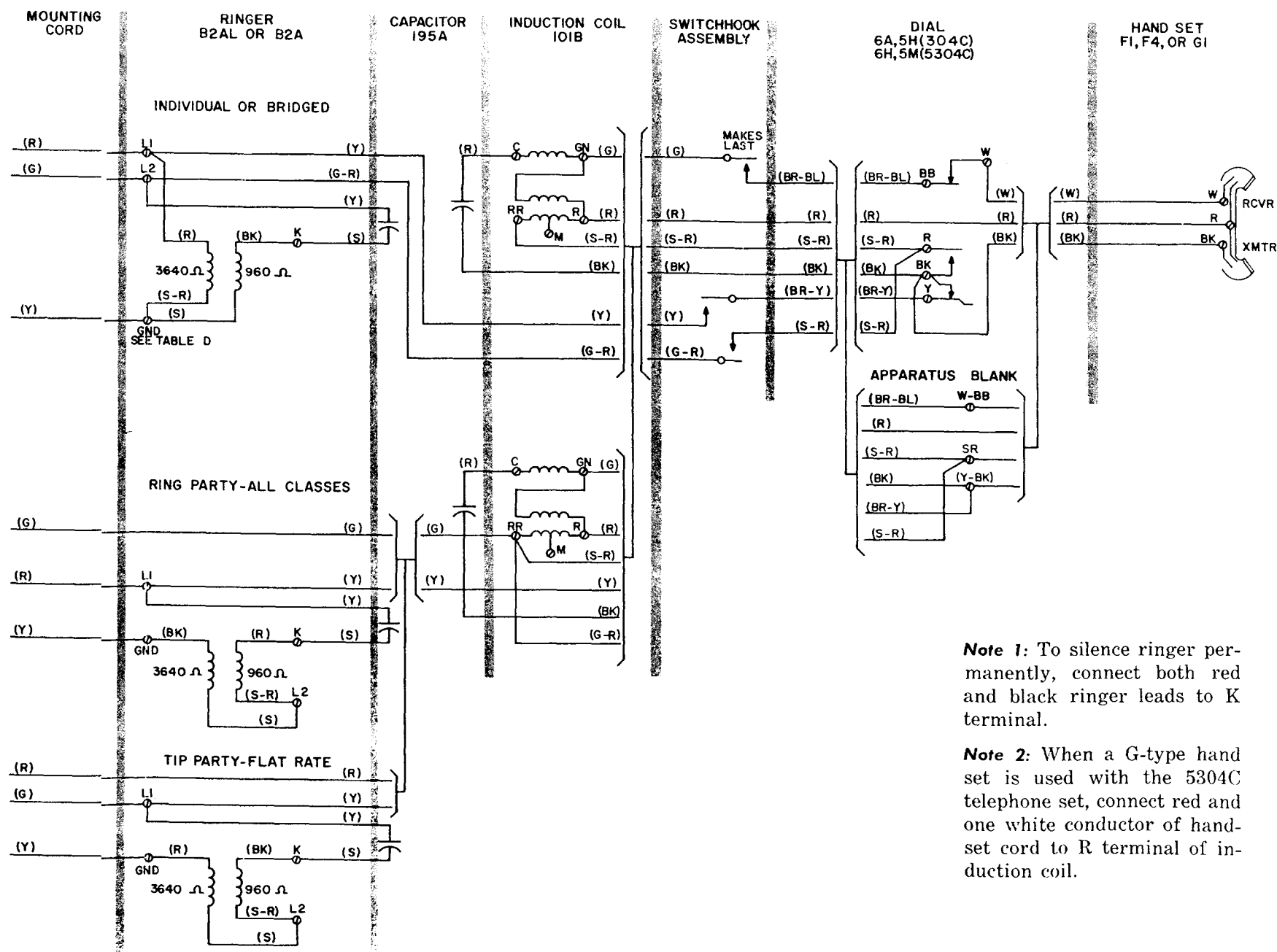
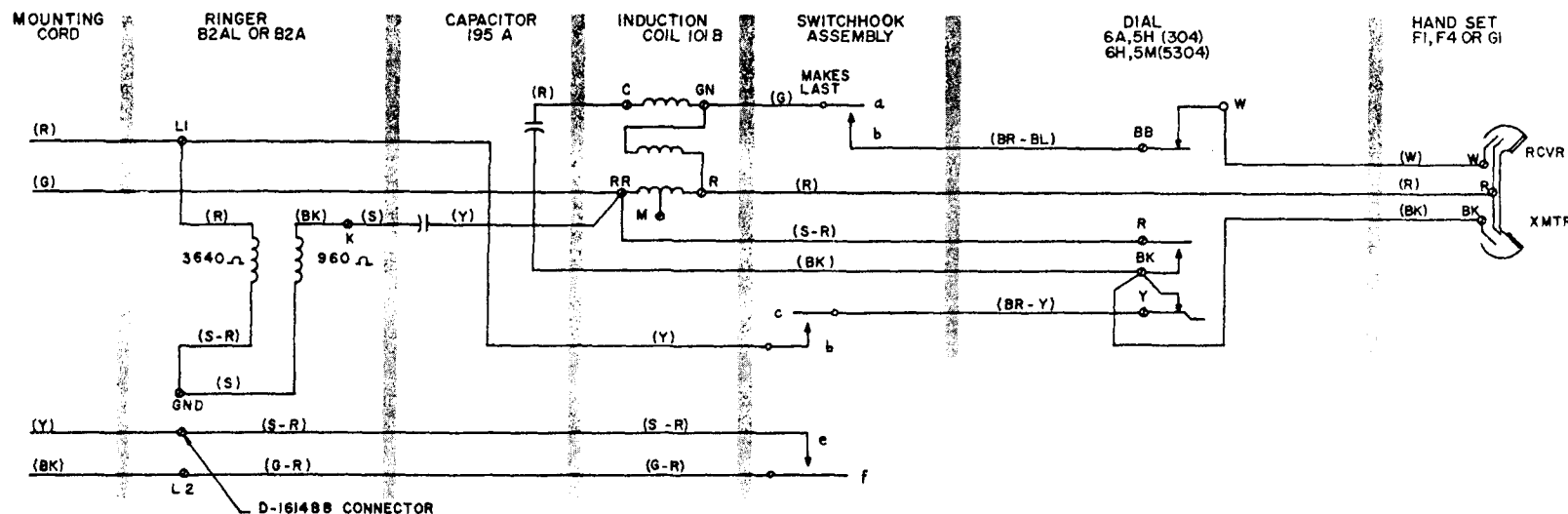


Fig. 2-304 A, C, and 5304C Telephone Sets,
Individual and Ring Station, All Services—
Tip Party, Flat Rate



Note 1: To silence the ringer permanently, connect both red and black ringer leads to K terminal.

Note 2: When a G-type hand set is used with the 5304C telephone set, connect red and one white conductor of hand-set cord to R terminal of induction coil.

Note 3: To modify for use with 1A1 key telephone system:

- Replace 3-conductor mounting cord with 4-conductor mounting cord.
- Connect yellow lead of mounting cord and slate-red lead of switchhook to a D-161488 connector. Insulate and store.



Switchhook contacts E and F must break last when handset is restored.

TABLE E
LINE, RINGER, AND SWITCHHOOK CONNECTIONS

Wire or Lead		1A1 KTS Station
Mounting Cord in Set	R	L1
	G	RR
	Y	See Note 3
	BK	L2
Ringer Leads	R	L1
	BK	K
	S	GRD
	S-R	GRD
Ringing Capacitor Leads	Y	RR
	S	K
Switchhook Leads	G-R	L2
	S-R	See Note 3
Mounting Cord at Connecting Block	Ring	R
	Tip	G
	A1	Y
	A	BK

Fig. 3—304C and 5304C Telephone Sets Modified for Use with 1A1 Key Telephone Systems