

TELEPHONE SET 702BQ1A CONNECTIONS

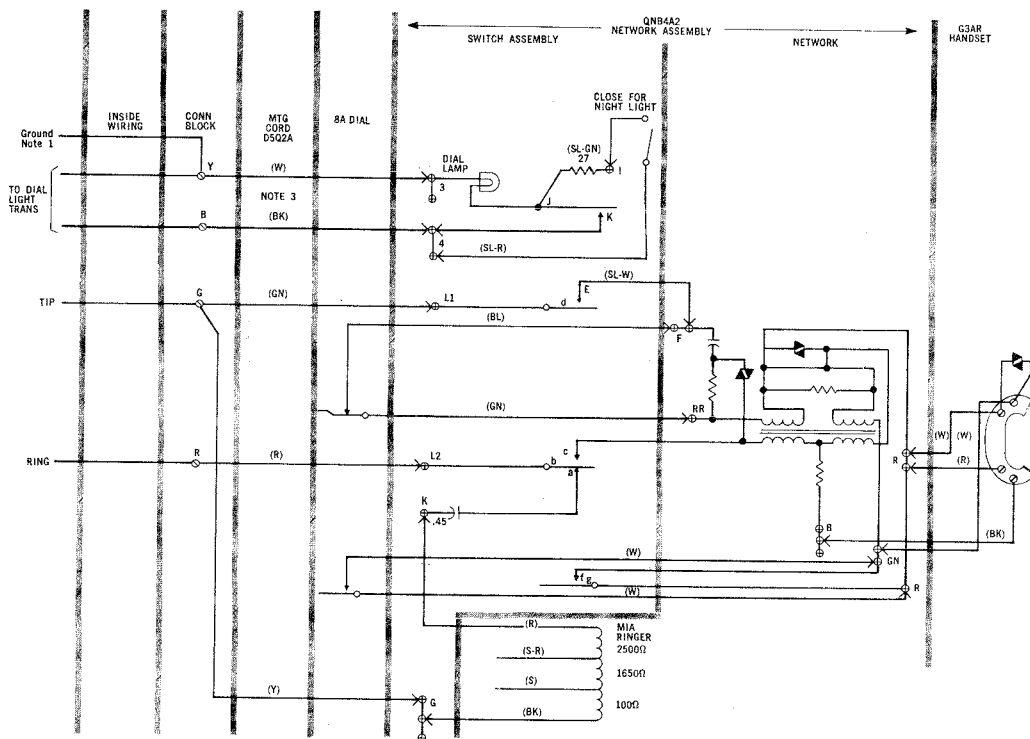


Fig. 1 — 702BQ1A Telephone Set Equipped With QNB4A2 Network (Early Production) — Connections

Note 1 Ground may be omitted if not required for service; not required for protection of dial light transformer.

Note 2 See Table A for line and ringer connections.

Note 3 When D6AB cord is used for replacement, it may be necessary to interchange these leads to obtain required conductor length.

TABLE A

Leads			Party			Tip Party With 2650 Ident. Grd.
			Individual	Ring	Tip	
Line	Ring	CONNECTING BLOCK	R	R	R	R
	Tip		G	G	G	G
	GRD		—	Y	Y	Y
Transformer	1		Y	Y	Y	Y
	2		B	B	B	B
Mounting Cord	R		R	R	G	G
	G		G	G	R	R
	Y		G	Y	Y	Y
	W		Y	Y	Y	Y
	BK		B	B	B	B
Ringer	R	CONNECTIONS IN TEL SET	K	K	K	K
	BK		G	G	G	G
	S		*	*	*	*
	S-R		*	*	*	B
Mounting Cord	R		L2	L2	L2	L2
	G		L1	L1	L1	L1
	Y		G	G	G	G
	W		3	3	3	3
	BK		4	4	4	4

* Furnished insulated and stored on sets of later manufacture, or on S (spare) terminals. For ANI service connect as above.

Note: To permanently silence the ringer in all instances except when Tip-Party identification is required, move R lead from terminal K to G. When Tip-Party identification is in use, remove R lead from terminal K, tape and store. All other ringer leads must remain connected in accordance with the table for party identification.

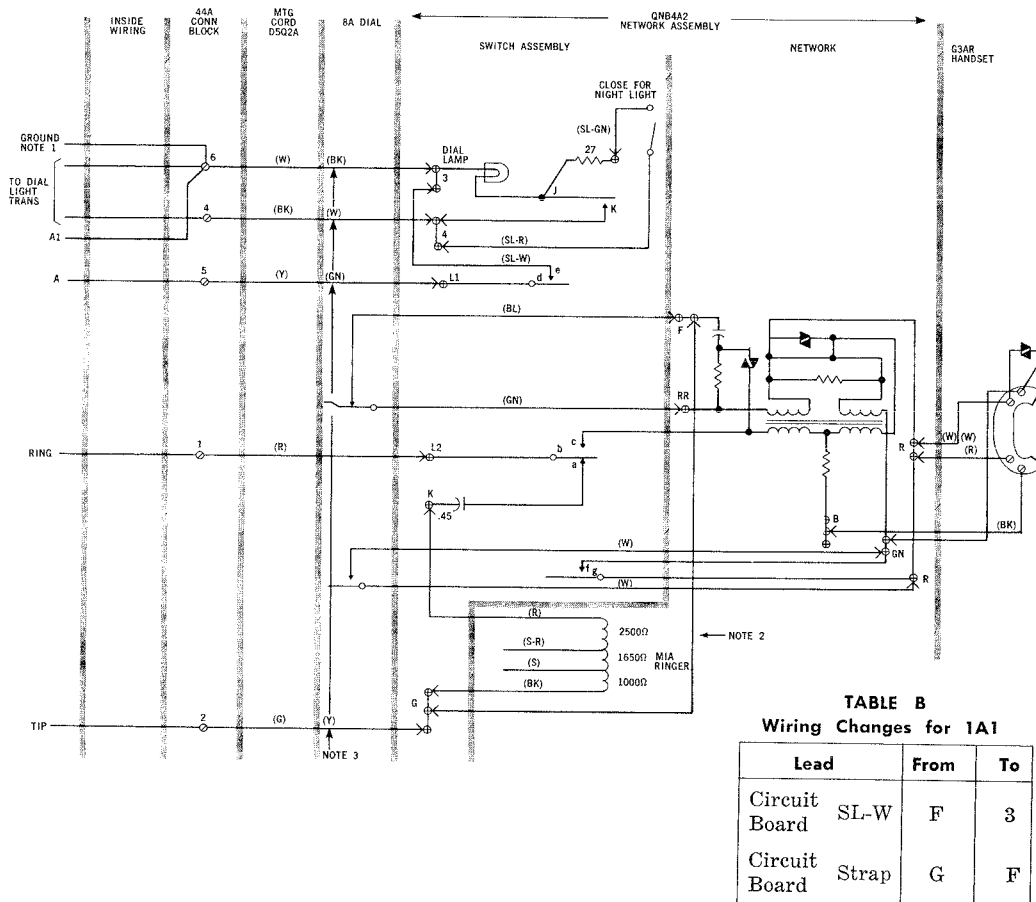


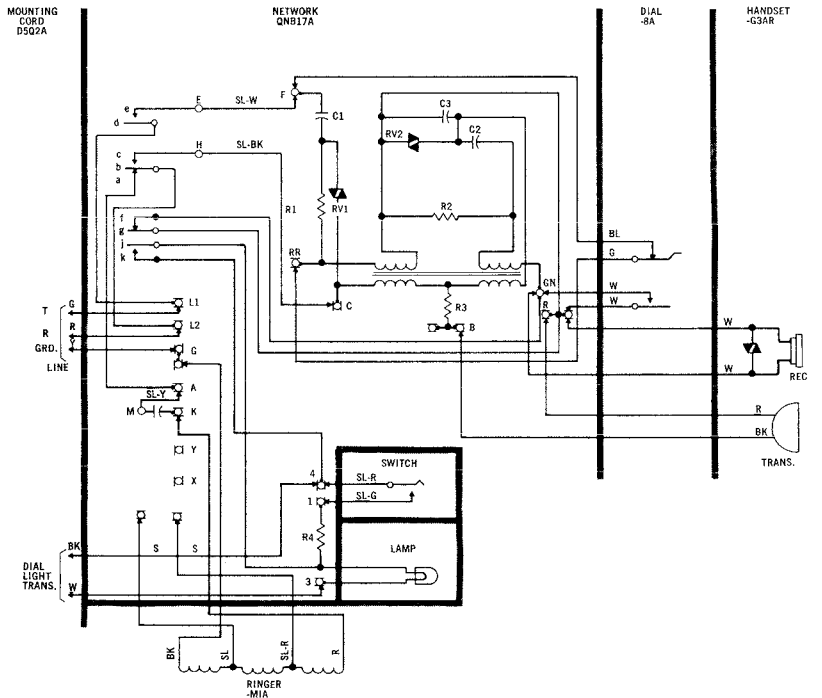
Fig. 2 — 702BQ1A Telephone Set (Equipped With QNB4A2 Network, Early Production) Used With 1A1 Key Telephone Systems

Note 1 Ground may be omitted if not required for service; not required for protection of dial light transformer.

Note 2 Use M1W cord or strap with inside wiring cable conductor.

Note 3 When D6AB cord is used for replacement the colour code arrangement must be used as shown.

* To prevent false holding condition when handset is restored, switch contacts *bc* must break before *de* breaks.



NOTES:

1. When the handset is removed contact gf breaks last.
2. Ground may be omitted if not required for service: not required for protection of Dial Light Transformer.

Fig. 3 — 702BQ1A Tel. Set Equipped With QNB17A Network (Current Production)

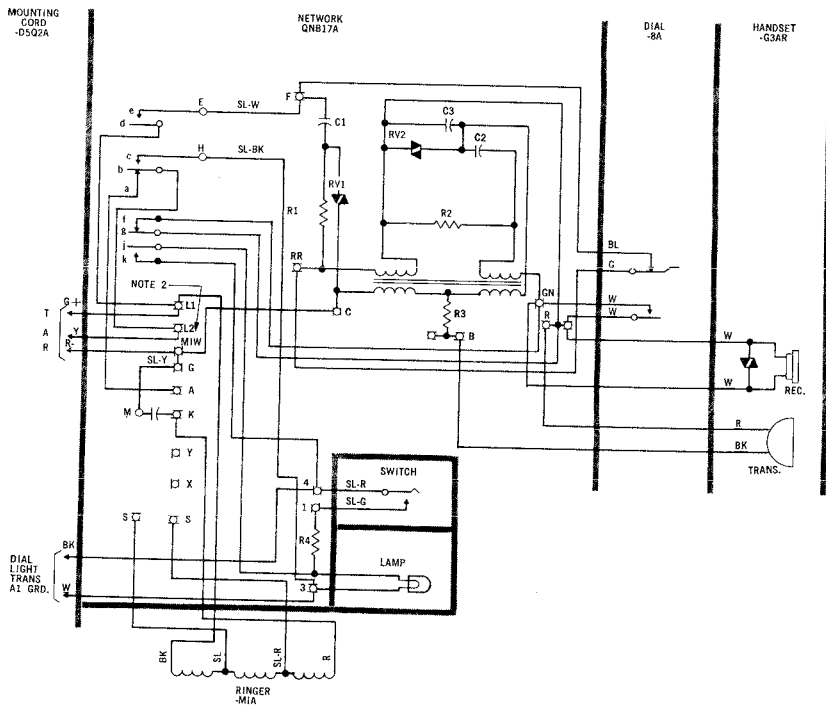


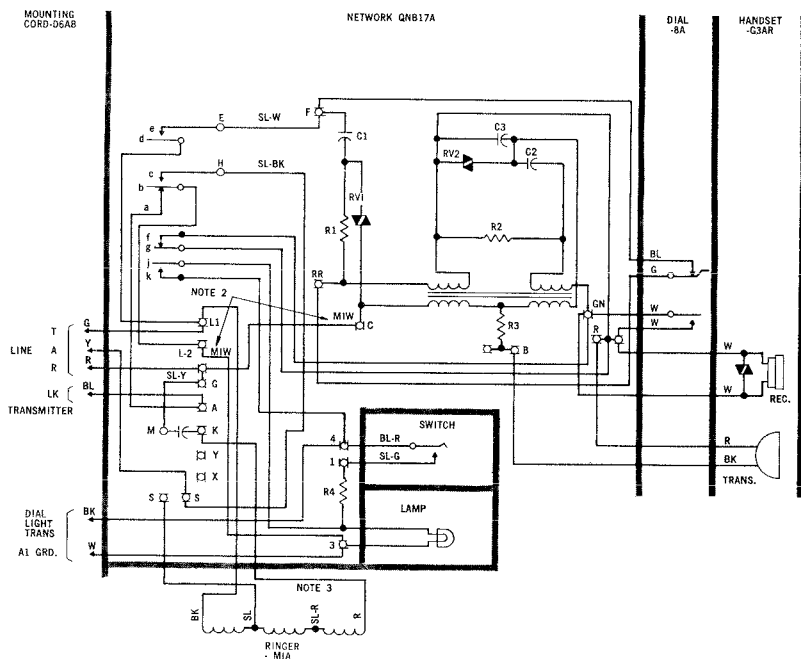
TABLE C
Table of Wiring Changes
for 1A1 or 1A2 KTS

Lead	From	To	REF.
SL-BK	C	3	Note 2
BK	G	L ¹	
SL-Y	A	G	
STRAP	G	C	

NOTES:

1. When the handset is removed contact gf breaks last.
2. Use MIW Cord for strapping.
3. Ground may be omitted if not required for service: not required for protection of Dial Light Transformer.
4. To modify telephone set as shown in Fig. 4, rewire the set according to Table C.

Fig. 4—702BQ1A Tel. Set Equipped With QNB17A Network (Current Production) Connections For 1A1 or 1A2 K.T.S.



NOTES:

1. When the handset is removed contact gf breaks last.
2. Use MIW Cord for strapping.
3. The SL and SL-R Ringer Leads are factory wired to terminals S and S. These terminals are spare. If use of these terminals are required for other wiring changes remove ringer leads, tape and store ensuring the stored leads are dressed to avoid interference with other components.
4. Ground may be omitted if not required for service: not required for protection of Dial Light Transformer.
5. To modify telephone set as shown in Fig. 5, rewire set according to Table D.

TABLE D

Table Of Wiring Changes
For 1A1 or 1A2 KTS & 3A Speakerphone

Lead	From	To	REF.
SL-R	S	—	Note 3
SL-BK	C	S	
BK	G	L ¹	
SL-Y	A	G	
STRAP	L ²	3	Note 2
STRAP	G	C	"

Fig. 5 — 702BQ1A Tel. Set Equipped With QNB17A
Network (Current Production) Connections For
1A1 or 1A2 K.T.S. And 3A Speakerphone.