

BELL SYSTEM PRACTICES
Station Installation and Maintenance

SECTION C42.132
SECTION C64.225
Issue 1, 11-1-40
AT&T Co Standard

COIN COLLECTORS

181 AND 182 TYPES

TESTS AND ADJUSTMENTS

1. GENERAL

1.01 This section covers the methods of testing and adjusting 181 and 182 type coin collectors. Maintenance of the dial and hand set is covered in Division C30.

1.02 Since these coin collectors (less hand set) are essentially the same as other corresponding multi-slot types except for the switchhook, contact spring assembly and coin signal parts, perform tests and adjustments under the conditions outlined in sections in Subdivision C64 entitled "Service Order and Repair Work" and in accordance with the requirements and methods given in sections in Subdivision C42 entitled "Tests and Adjustments," with the modifications outlined below.

2. COIN CHUTE

2.01 To remove coin chute or to make inspection at points other than near the lower end of the chute, remove mounting screws of gong transmitter bracket assembly and hook bracket up out of way. Tests on coin chute may then be made in usual manner.

3. CORDING

3.01 Hand set cord shall be anchored and arranged in accordance with Section C42.105.

C42.132
C64.225

Page 1

COIN COLLECTORS
181 AND 182 TYPES
TESTS AND ADJUSTMENTS

4. TESTS WITH HAND TEST SET

4.01 Where practices for other coin collectors specify that hand test set be connected across terminals R and Y of coin collector, connect hand test set across terminal R on induction coil and Y on contact spring assembly.

5. SWITCHHOOK SPRING ASSEMBLY

5.01 Contacts shall make and break and shall have such sequences as are shown in the applicable figures of Sections C64.231 and C64.233.

- (a) If contacts touch but do not make, burnish contacts with No. 265B tool.
- (b) If contacts do not make, break and have correct sequence, check and adjust as given below.

Make, Break, Sequence: Adjust short contact springs, if necessary, using No. 466A tool, as shown on Fig. 1.

In case of springs having stop springs, both springs shall be bent simultaneously, making sure that after adjustments have been made, contact spring (or each finger thereof in case of split springs) is tensioned against outer end of stop spring when contacts are open. When adjusting for contact sequence, rear pairs of contacts shall be adjusted first and contact sequence obtained by this means, if possible, in preference to disturbing adjustments of front pairs of contacts.

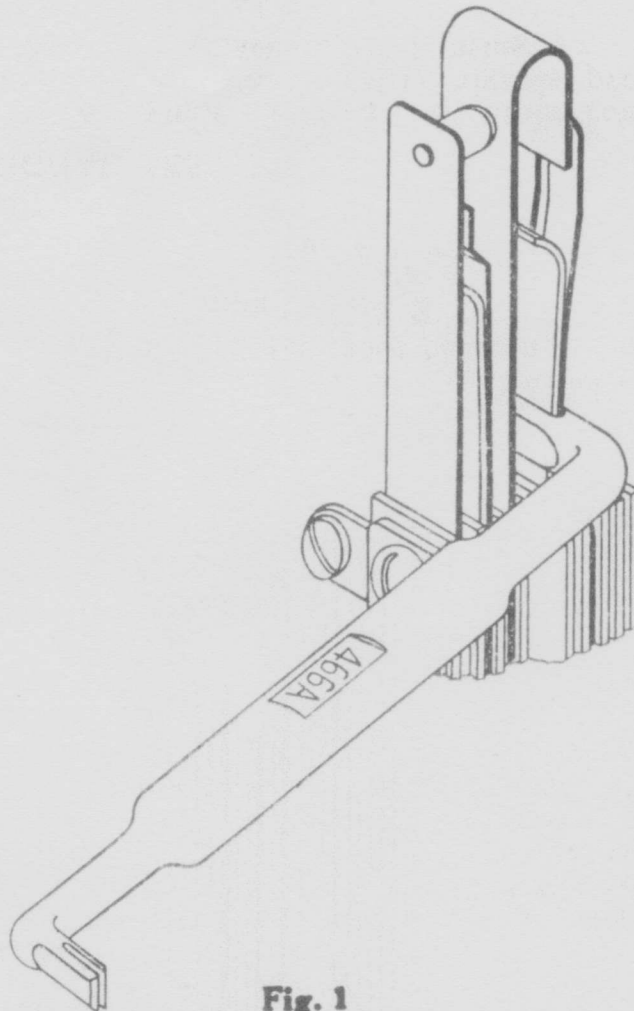
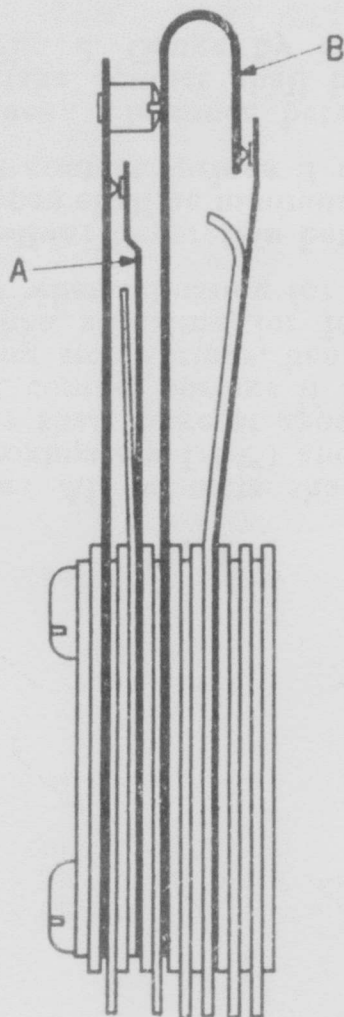


Fig. 1

Contact Follow: All contacts shall have a perceptible follow (approximately $1/64''$) and pairs of contacts of twin contacts shall make at approximately same time. Adjust short contact springs if necessary. In case of springs having stop springs, bend both springs simultaneously when adjusting for follow, but bend only spring finger when adjusting for making at same time.

Contact Separation: Separation between all mating contacts when open shall be minimum $.016''$. Gauge by eye. Adjust short contact springs if necessary.

Spring Clearance: Clearance between springs not intended to make contact shall be minimum $1/32''$ as shown in Fig. 2. Gauge by eye. Adjust springs if necessary.



Min. 1/32" Clearance between
Springs A and B

Fig. 2

6. COIN SIGNAL TEST

6.01 Test coin signals as in case of other coin collectors.
If operator can not identify signals properly or if
either gong is loose, replace upper housing.