

WIRING DESKS AND TABLES

1.00 INTRODUCTION

1.01 This practice covers the placing of station wire and inside wiring cable on desks and tables.

1.02 Due to extensive changes marginal arrows have been omitted.

2.00 GENERAL

Always use the wiring facilities and apparatus mounting brackets which have been provided by the desk manufacturer. In cases where it is impracticable to do this, inform the customer of the facts and obtain permission before drilling holes and mounting apparatus on the side of desks.

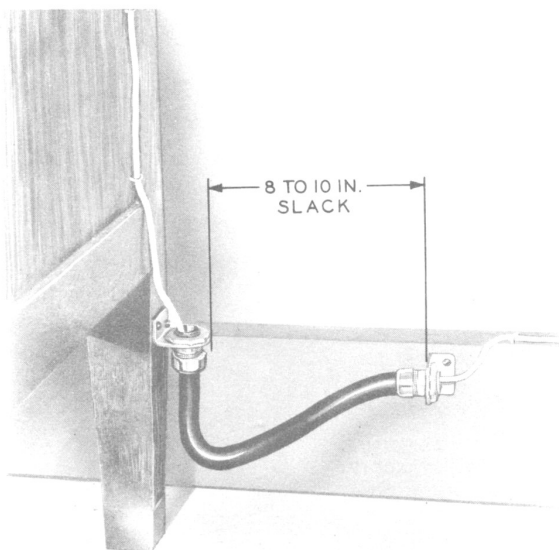


Fig. 1 — Wiring to Desk — Station Tubing

3.00 WIRING TO DESKS AND TABLES

3.01 When a desk or table is located near a wall, station wire may be extended by using either B station tubing (Fig. 1) or a standard mounting cord (Fig. 2).

3.02 B station tubing should be used where the following are anticipated or seem probable:

- Frequent mopping or cleaning.
- Movement of desk or table.
- Mechanical damage to wiring.

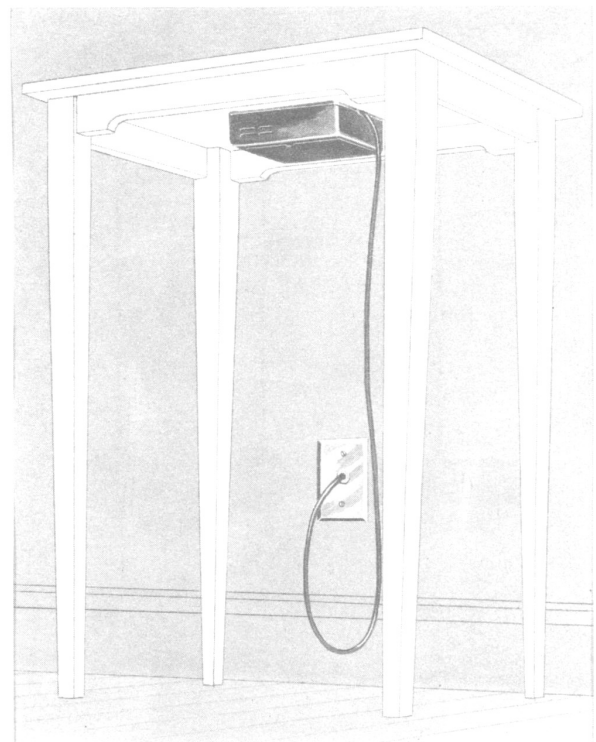
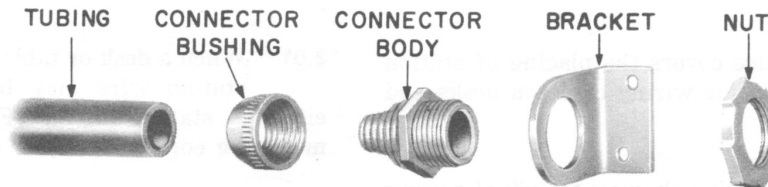


Fig. 2 — Wiring to Table — Mounting Cord

SECTION C23.015

3.03 Methods of assembly and uses of B station tubing and wiremold assembly are shown in Fig. 3, 4, 5, and 6. Wiremold assembly may be ordered in the following manner:

- Washer, Wiremold, ED-2214.
- Connector, Wiremold, 1582T.
- Bracket, Wiremold, 1508T.



B STATION TUBING FITTING

Fig. 3 — Assembly of B Station Tubing and Fittings to Brackets

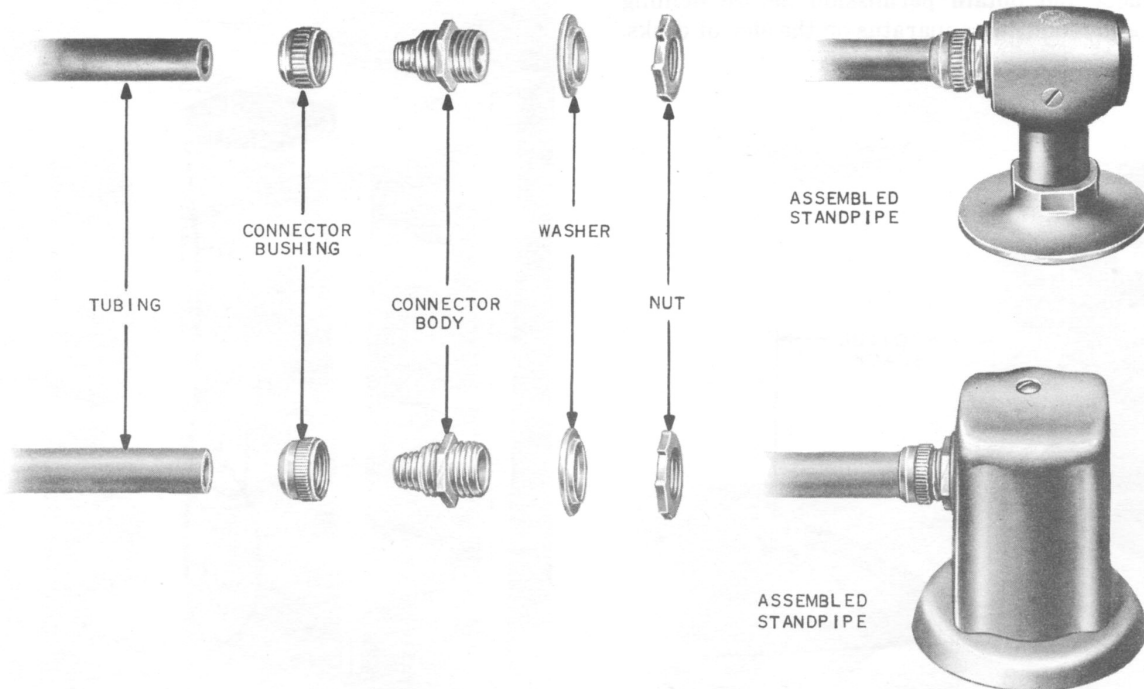


Fig. 4 — Assembly of B Station Tubing Fittings to Standpipes That Are Part of a Permanent Underfloor Duct or Conduit System

Fig. 5 — Use of B Station Tubing and 750-type Service Fitting — No Underfloor Duct or Conduit System

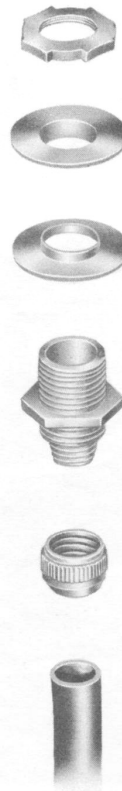
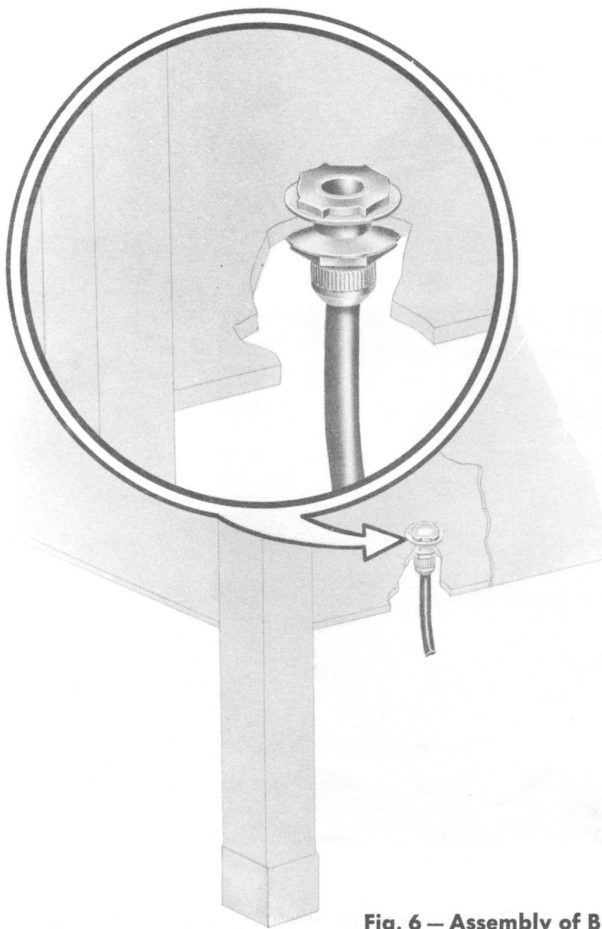
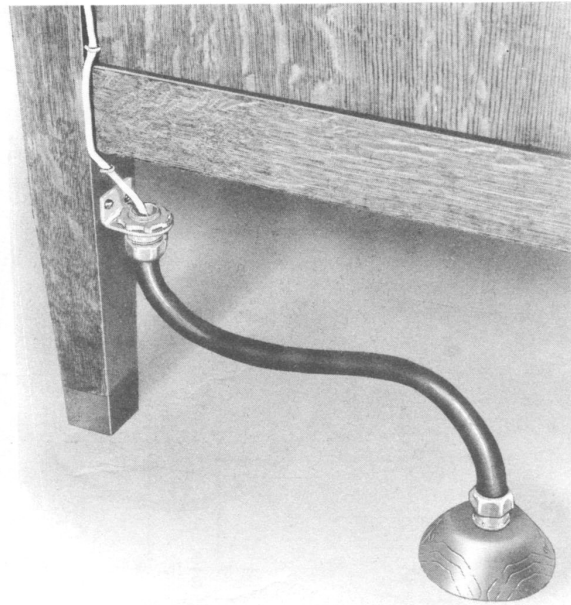


Fig. 6 — Assembly of B Station Tubing to Dust Pan of Metal Desk

- 3.04 Methods of wiring to desks and tables when no B station tubing is used are shown in Fig. 7.

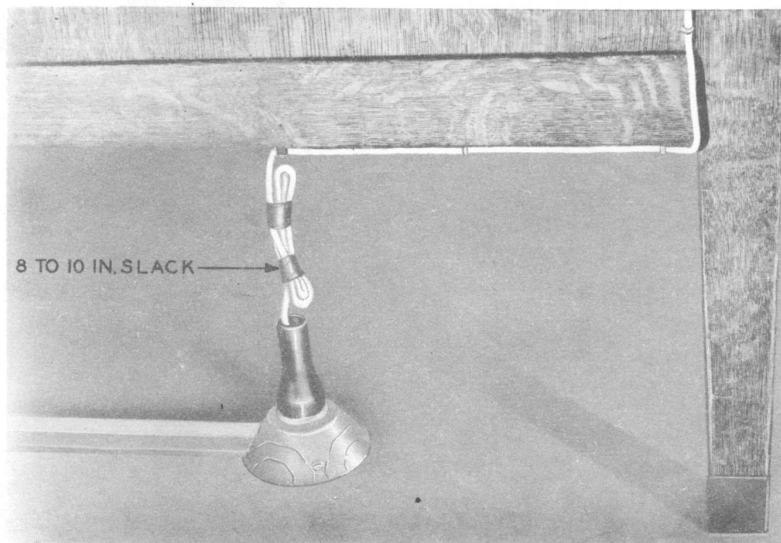
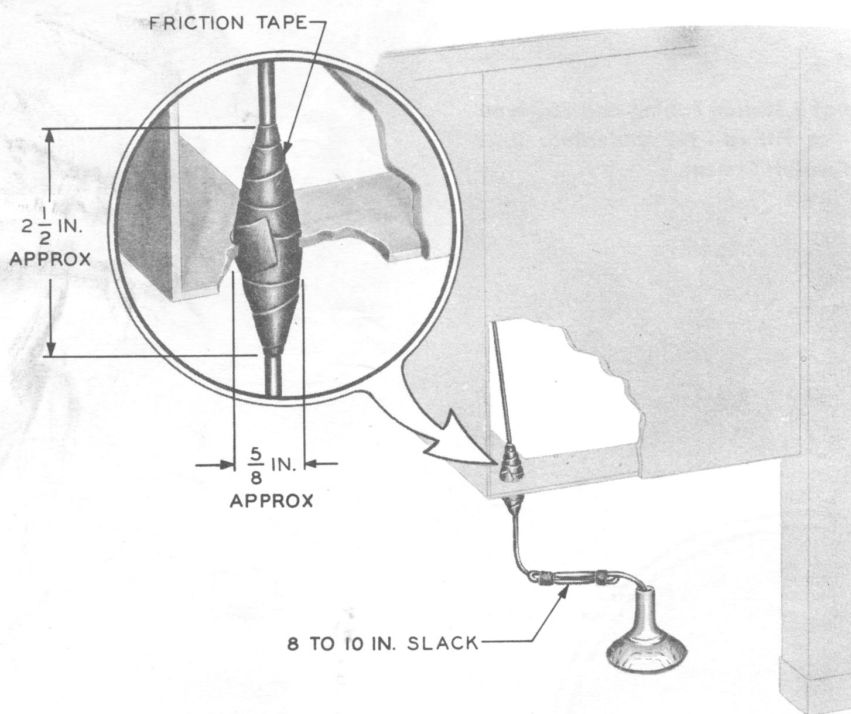


Fig. 7 — Wiring to Desks and Tables — No B Station Tubing Used

4.00 WIRING THE INSIDE OF DESKS AND TABLES

4.01 Many desk manufacturers provide facilities which will permit placing wiring so that it may be concealed as shown in Fig. 8 and 9.

4.02 Wiring of a desk having no facilities for concealing wire and cable is shown in Fig. 10.

4.03 Proper selection of wire and spacing of fasteners are necessary for good appearance. The spacing of fasteners on desks and tables

should be 7 to 12 inches on vertical and horizontal runs, and 1-1/2 inches from corners when making turns.

4.04 If it is necessary to use flat rubber cordage, see the C Section entitled Concealing Wire and Cable without Conduits or Raceways.

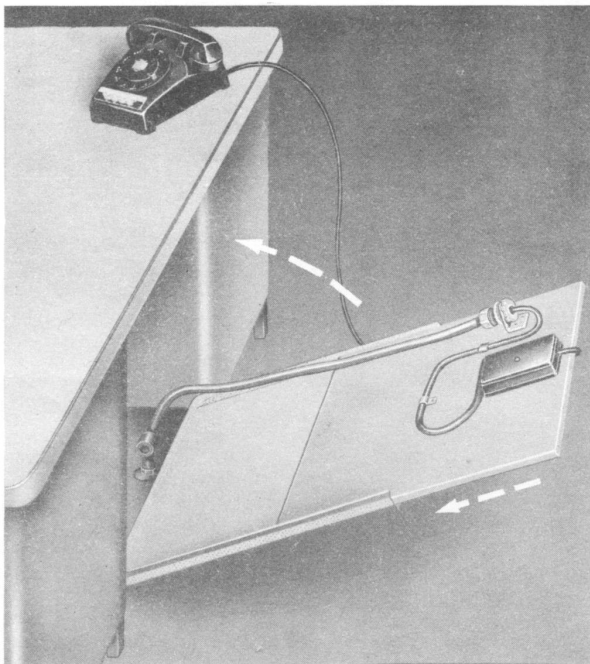
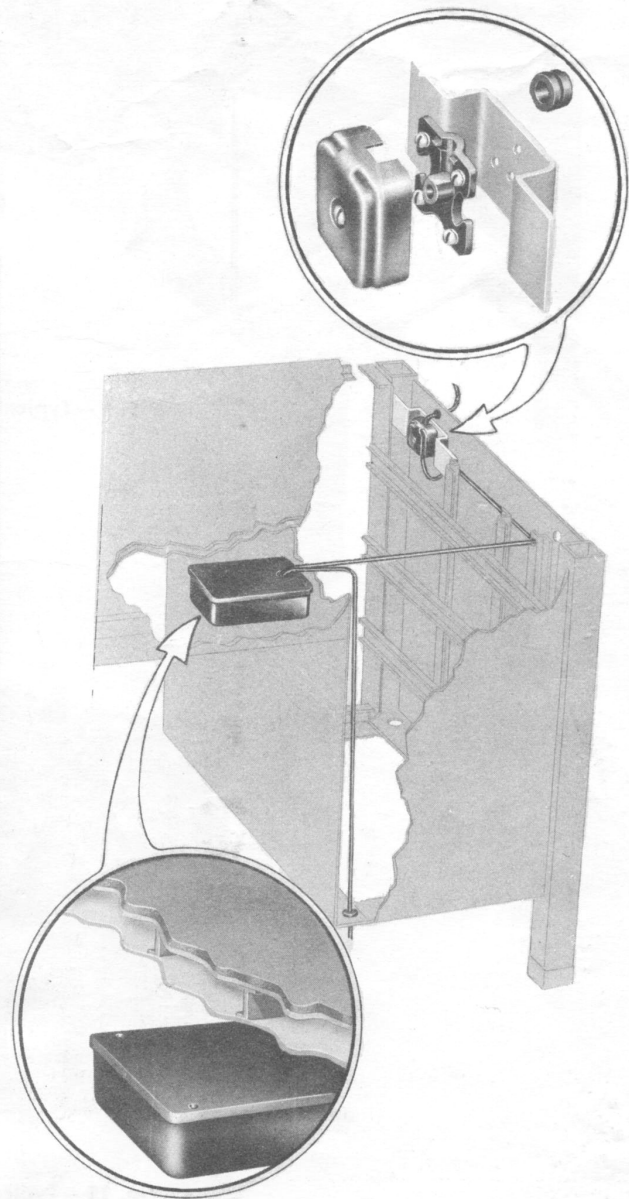


Fig. 8 — Typical Metal Desk with Wiring Facilities



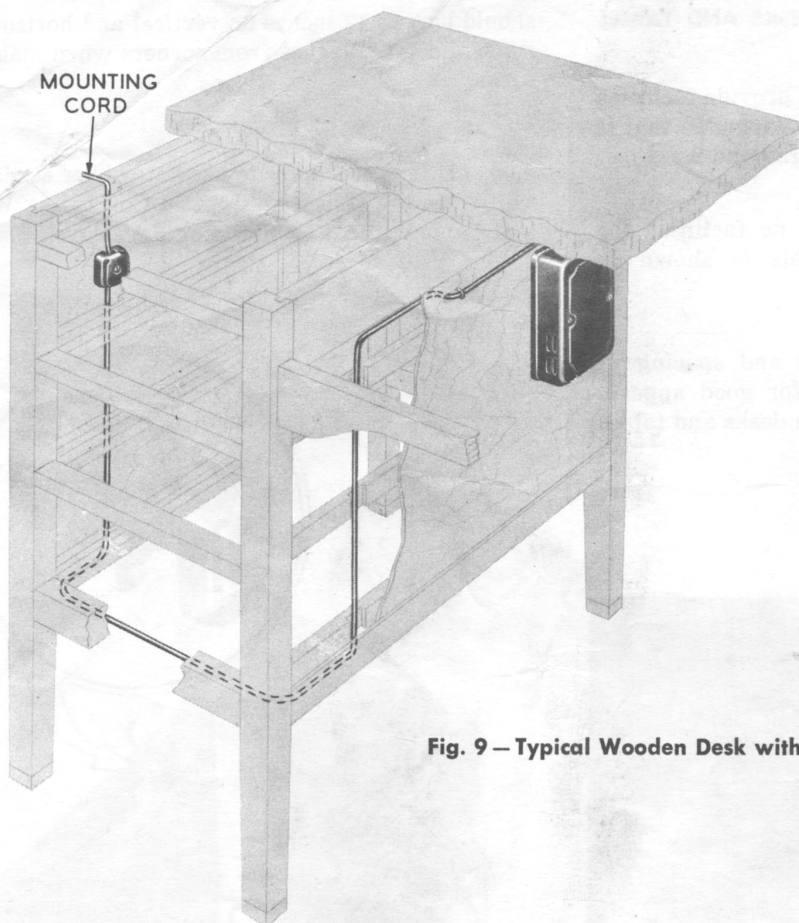


Fig. 9 — Typical Wooden Desk with Wiring Facilities

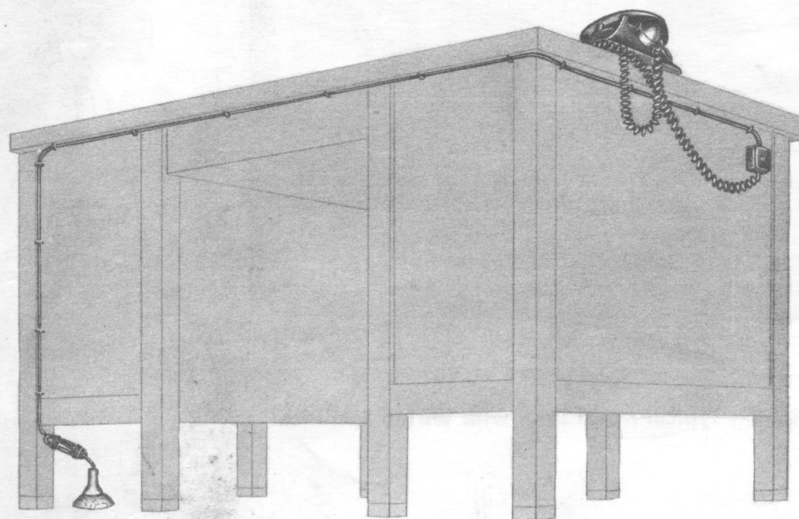


Fig. 10 — Typical Wiring of Desk Having No Wiring Facilities