

BELL SYSTEM PRACTICES
Station Installation and Maintenance

SECTION C42.107
Issue 1, 11-30-49
AT&T Co Provisional

COIN COLLECTORS

MULTI-SLOT PREPAYMENT TYPES

CONVERTED FOR 10¢ OPERATION

CORDING

1. GENERAL

1.01 This section covers the cording for 55, 155, 166 and 191-type coin collectors converted from the 50, 150, 161 and 181-type coin collectors, in accordance with Section C42.139.

1.02 Figures given herein are intended to show only mechanical arrangement of cords and conductors within the coin collector, so as to obtain correct anchorage, avoid interference with other parts, etc. Figures given herein show only the common prepayment type coin collector with relay but the same general principles should be followed in cording similar types not specifically shown. For connections, refer to connection sections in Subdivision C64.

2. UPPER HOUSING ASSEMBLY

2.01 When a radio interference suppression filter is required with these coin collectors, a 61R filter shall be placed in the same location as the 61F filter in the old style coin collector. It shall be fastened to the coin chute by screw P-129732 furnished with the filter. See Section C55.803.

2.02 The dial cord, when used shall be anchored against the dial cup by cord clamp P-339764 or equivalent as shown in Figs. 1 and 2.

2.03 On 55, 155 and 166-type housings shown in Fig. 1, which have the welded-on type of cord clamp, the transmitter cord shall pass through the hole in the clamp. If welded-on clamp is not provided, D-89296 or P-225584 cord clamp shall be provided and the transmitter cords shall pass under notch in clamp, except in the very early type housing

having a shelf cast just below the transmitter cord hole. In the latter case, cord shall be passed over the shelf. The D-89296 and P-225584 cord clamps shall be bent downward at an angle of approximately 45°, to prevent interference with the relay shield KS-7994.

2.04 If it is necessary to remount or replace transmitter unit, care shall be taken to see that cord tips of transmitter cords are so depressed that there will be no possibility of cord tips coming into contact with transmitter bridge or bell. T1C transmitter cords having textile outer cover and rubber insulation shall be used when replacement is required.

2.05 Figs. 3, 4 and 5 show the arrangements of the dial cord leads and conductors in the upper housing assembly when equipped with dial. The gong signal transmitter leads shall be dressed as shown in Fig. 5, to prevent interference with coin chute.

2.06 At local battery talking, common battery signalling station a KS-13490 resistor, 20 ohms, 1/2 watt, shall be added in the upper housing. Excess length of resistor leads shall be cut off and the resistor shall be arranged as shown in partial View A of Fig. 5.

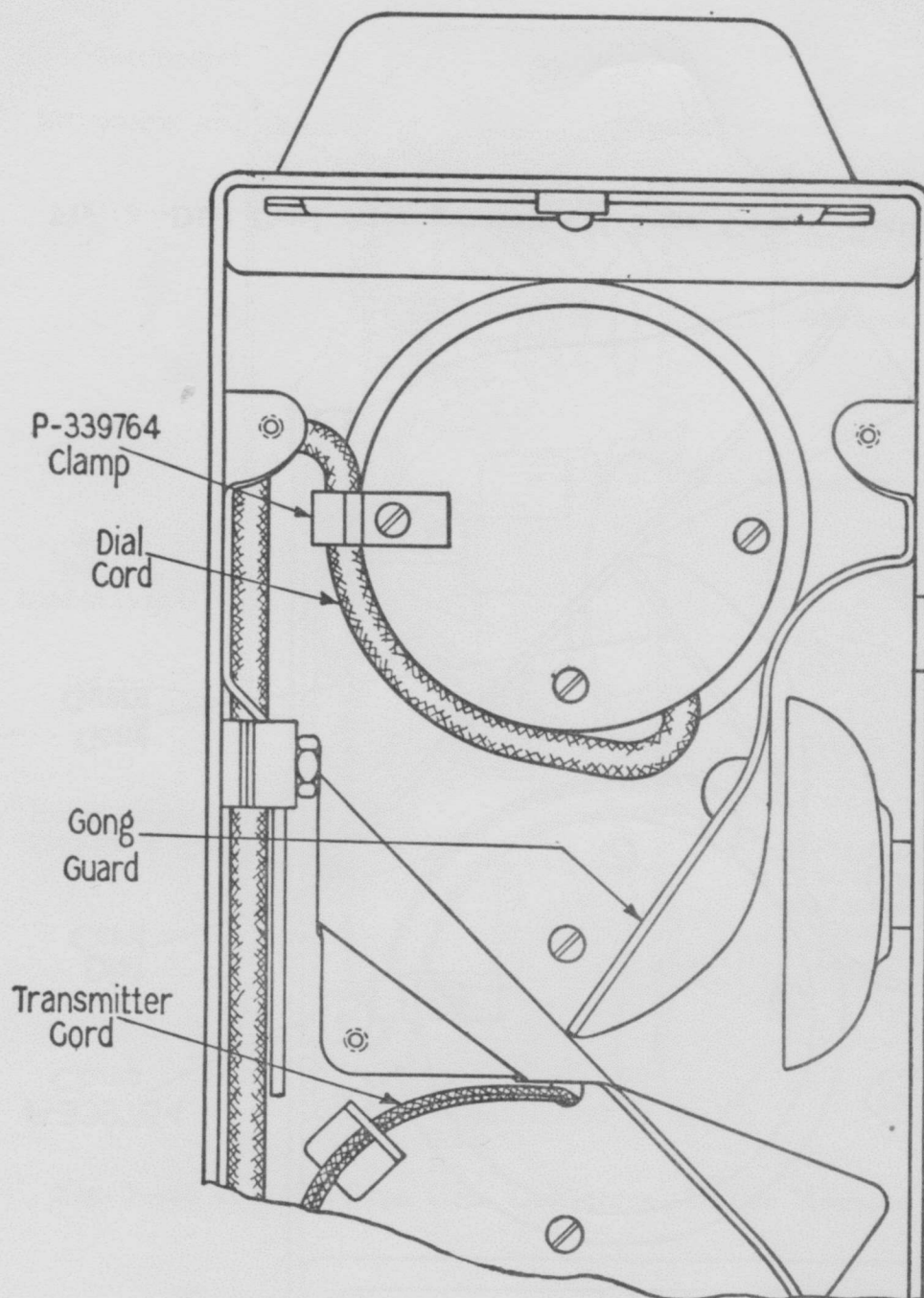


Fig. 1—Dial and Transmitter Cord Arrangements—55, 155 and 166-Type Coin Collectors

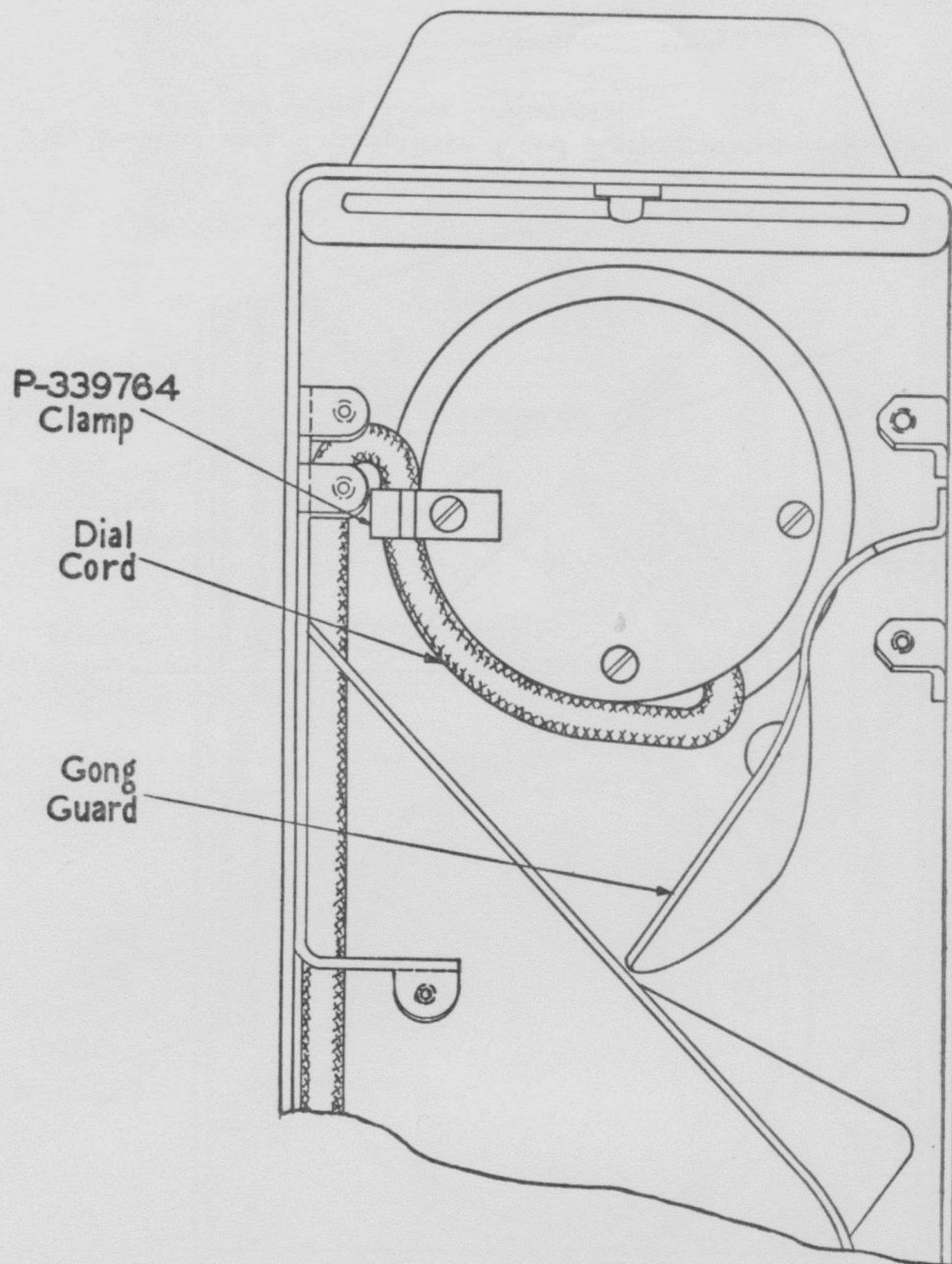


Fig. 2—Dial Cord Arrangement—191-Type Coin Collector

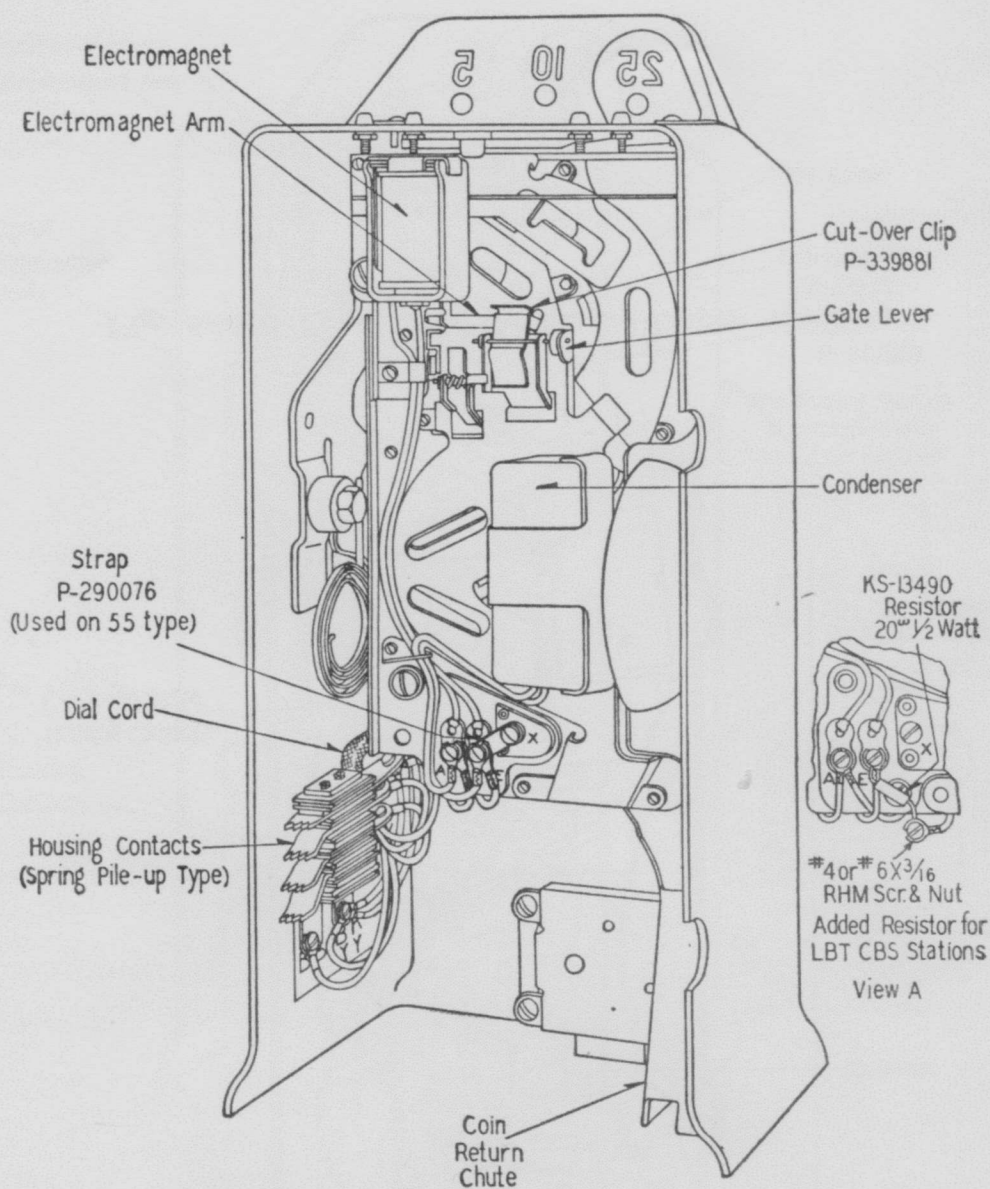


Fig. 3—55 and 155-Type Coin Collectors—Upper Housing

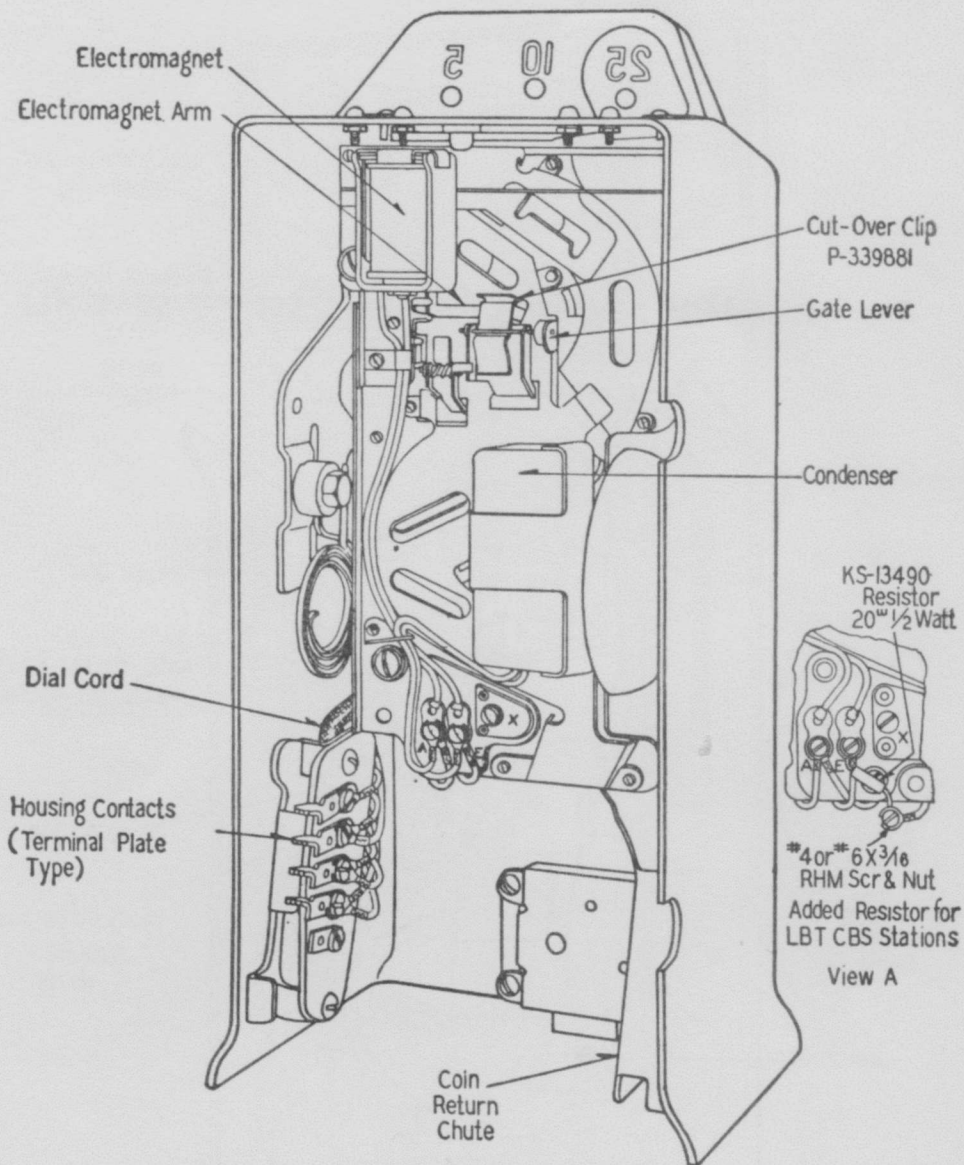


Fig. 4—166-Type Coin Collector—Upper Housing

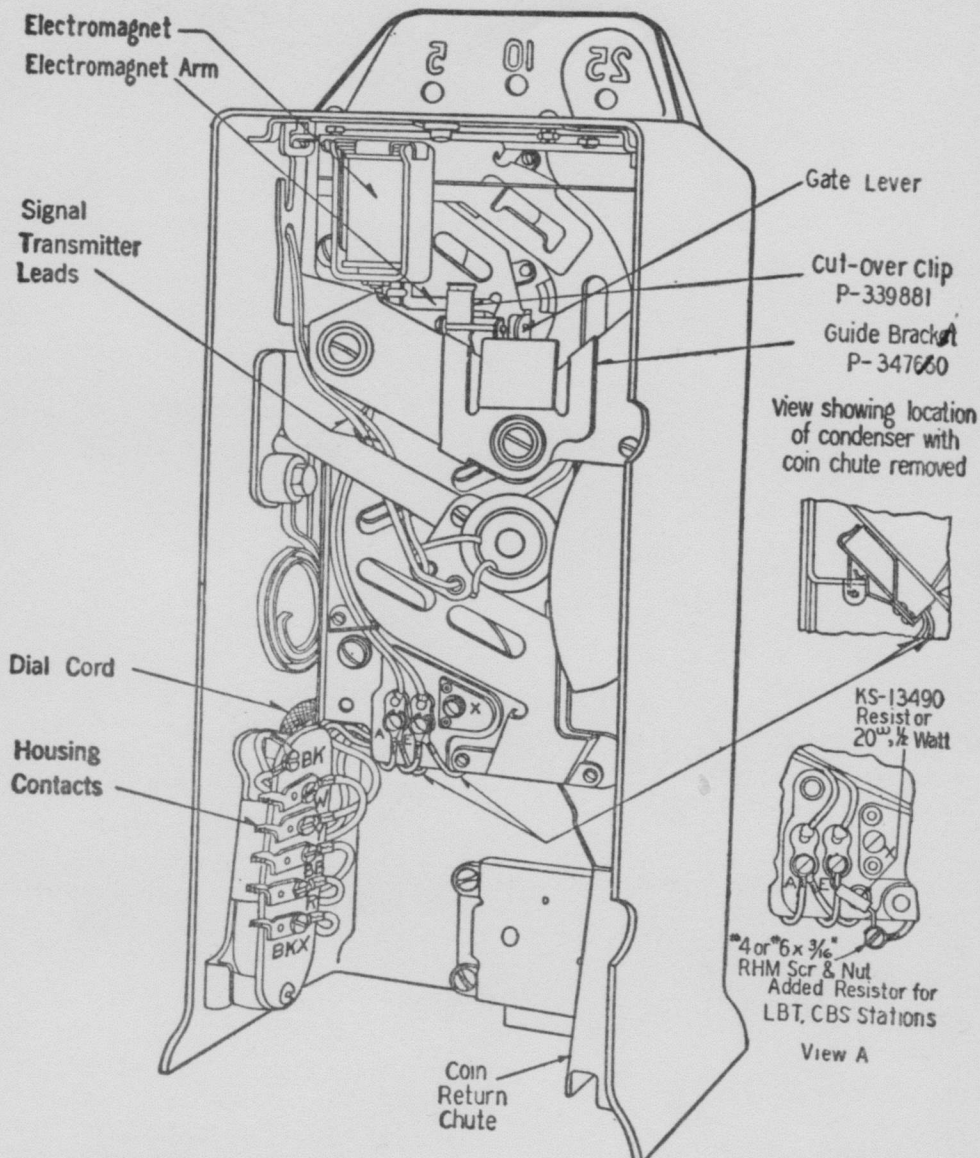


Fig. 5—191-Type Coin Collector by Conversion—Upper Housing

3. LOWER HOUSING AND BACKPLATE ASSEMBLY

Caution: Hand set cord or any conductors shall be so arranged so that they do not lie between the equalizing spring or any of the contact springs and the backplate.

3.01 Typical arrangements of the backplate wiring for the 55, 155, 166 and 191-types are shown in Figs. 6, 7, 8, 9 and 10.

3.02 Any 55-type coin collectors equipped with the backplate shown in Fig. 8 instead of the one shown in Fig. 6 shall be provided with transfer spring assembly P-347224 in accordance with Section C42.139. In such cases, the cord and conductors shall be dressed in the same manner as shown in Fig. 6.

3.03 For the 191-type, conductors shall be arranged as shown in upper part of Fig. 10 (open end of clamp toward the right) and shall be dressed so as to prevent interference with the operation of the switchhook arm, switchhook shaft and the coin chute. Conductors shall not be in the path of the gate operating arm.

3.04 When necessary to replace a handset cord, a strong string or twine shall be tied to old cord before removing it, and the string used to pull new cord through cord entry port in order to facilitate replacement.

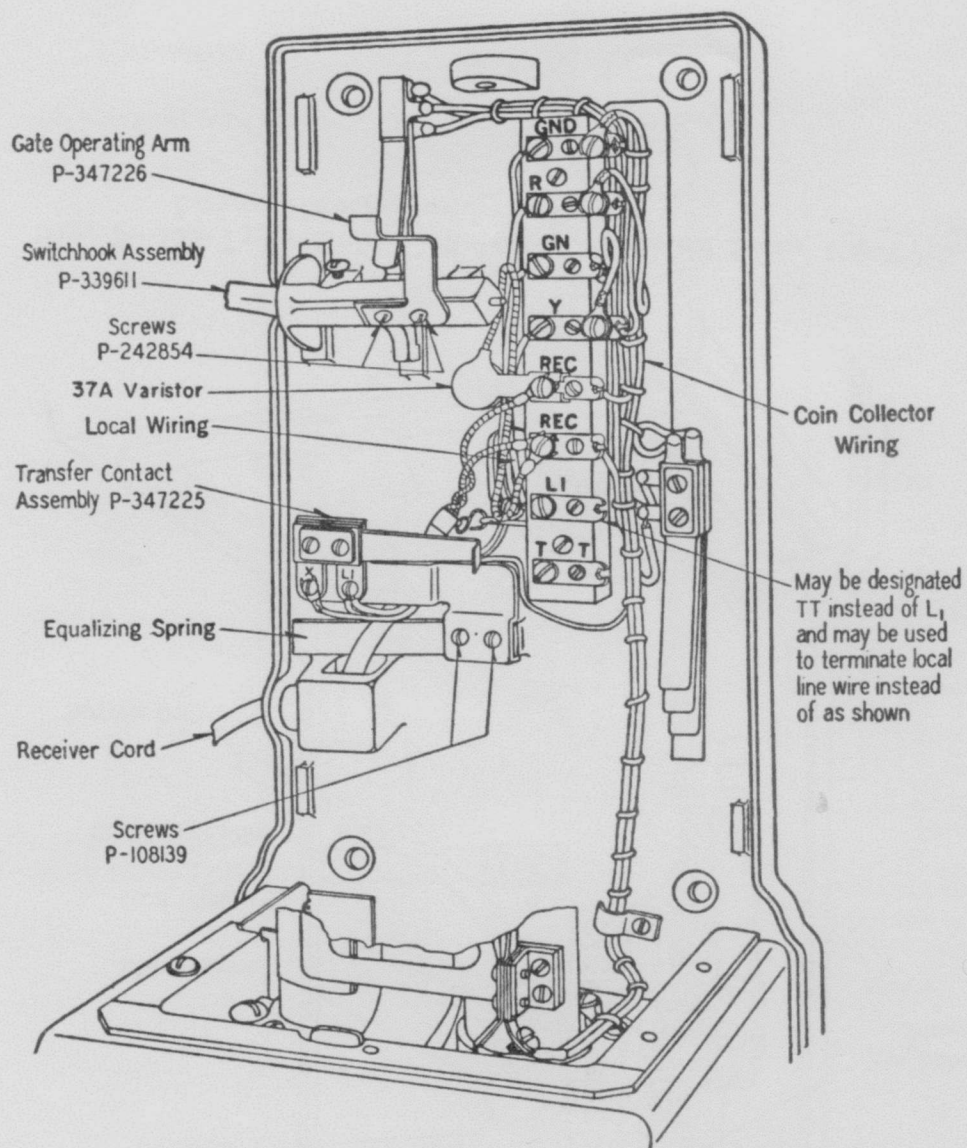
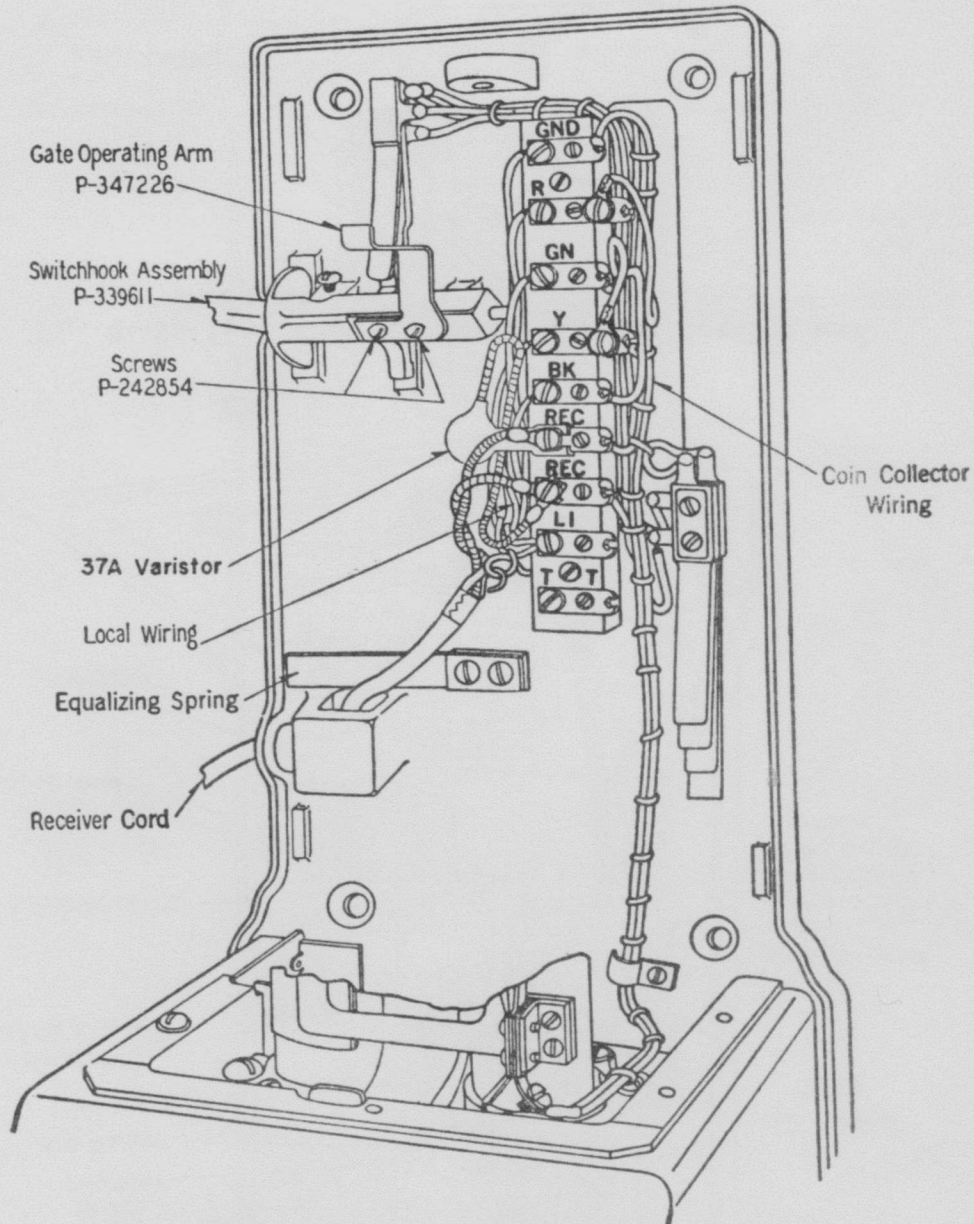


Fig. 6—55-Type Coin Collector—Lower Housing and Backplate



**Fig. 7—155-Type Coin Collector Converted from 150-Type—
Lower Housing and Backplate**

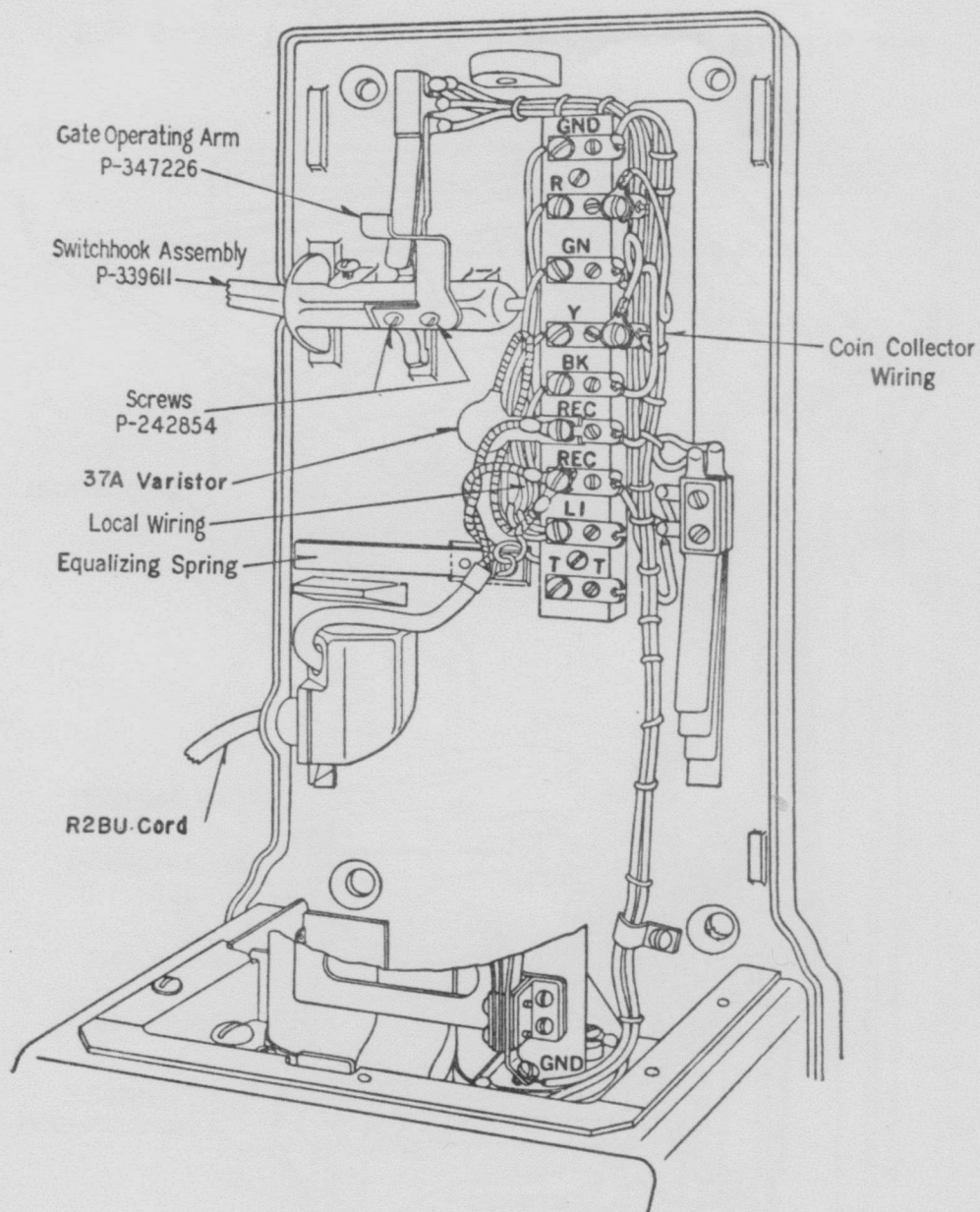


Fig. 8—155-Type Coin Collector Converted from 161A or B—Backplate.

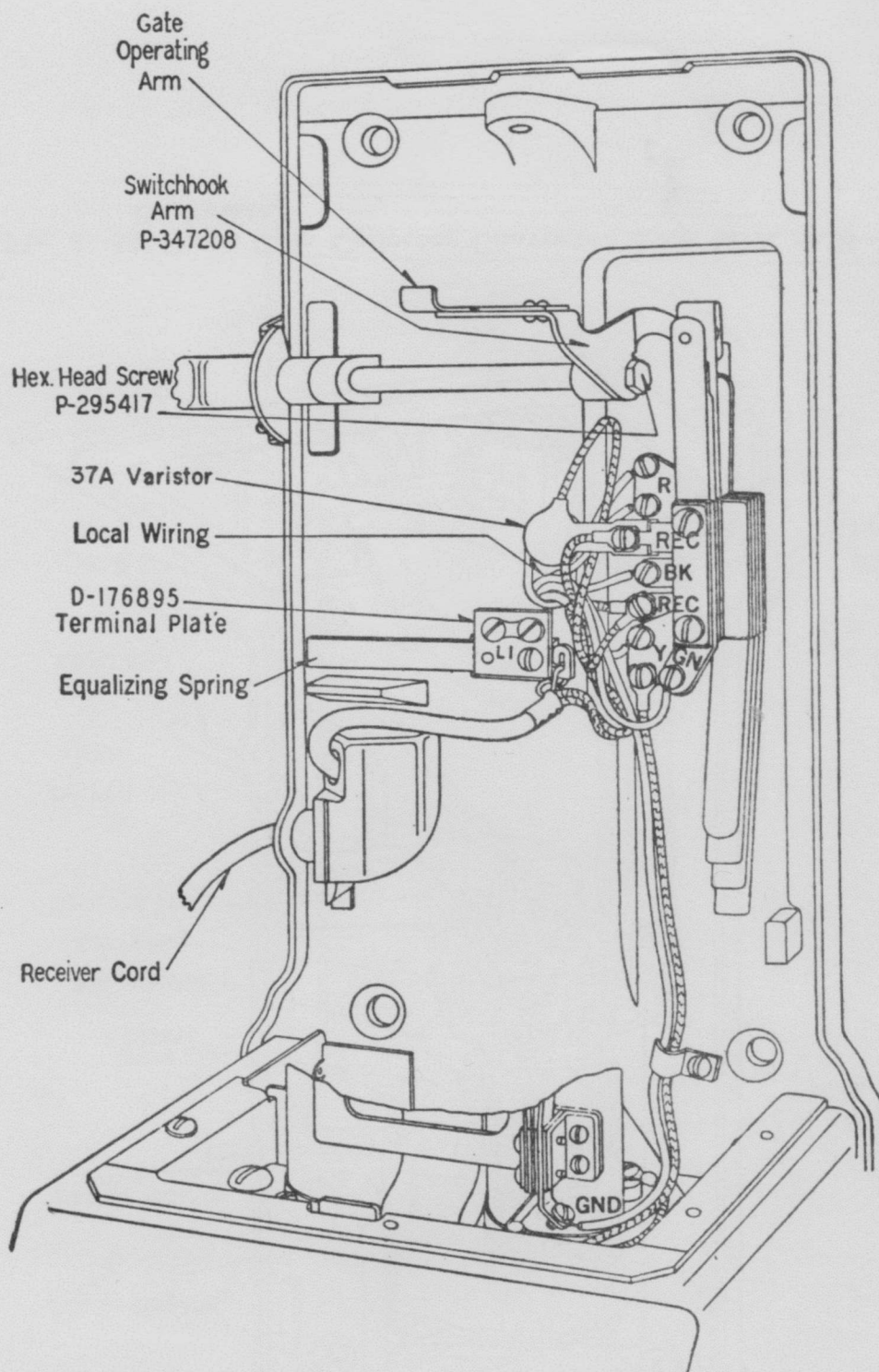


Fig. 9—166-Type Coin Collector—Lower Housing and Backplate

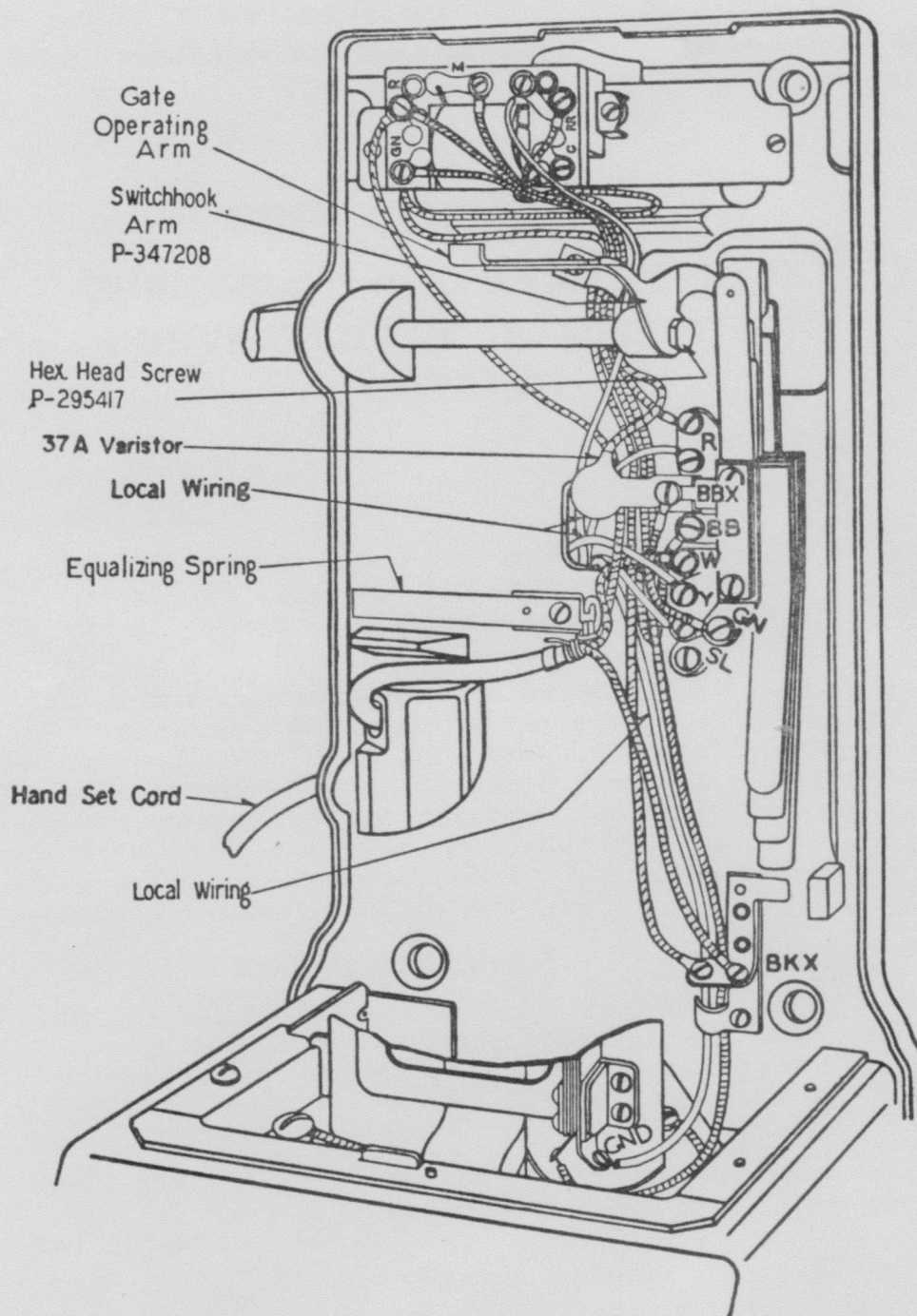


Fig. 10—191-Type Coin Collector—Lower Housing and Backplate

C42.107

Page 13
13 Pages

COIN COLLECTORS—MULTI-SLOT TYPES CONVERTED
FOR 10¢ OPERATION—CORDING