

BELL SYSTEM PRACTICES

Station Installation and Maintenance

SECTION C42.145

Issue 1, December, 1953

AT&T Co Provisional

COIN COLLECTORS

MULTISLOT

196 AND 197 TYPES MAINTENANCE

1. GENERAL

1.01 This section is reissued to provide information covering the maintenance of the special features of the F-50436, F-50437, 196 and 197-type coin collectors. It also includes information on the conversion of 181, 191, and 195-type coin collectors to the 196 or 197 types. Earlier type coin collectors cannot be converted.

1.02 The F-50436, F-50437, 196 and 197 coin collectors differ from the 191 and 195 types in that a washer rejector mechanism has been added in the upper housing. A pushbutton mechanism has also been provided to assist in discharging material that may become stuck in the region of the rejector mechanism and the upper portion of the coin chute.

1.03 Reference should be made to Section C42.144 for other maintenance information on these coin collectors.

2. SUPPLIES

2.01 Maintenance Parts

P-20A119—Coin chute

P-12A680—Coin mounting screw (2 required)

P-12A681—Chute restoring spring (2 required)

2.02 Conversion Parts

P-13A766—Equipped Upper Housing

*P-16A311—Coil mounting plate

*P-299453 —Coil mounting screw

P-16A833—Induction coil cover

*P-22061 —Plate mounting screw

*Required only when converting older 191 to 196-type and 195 to 197-type collectors.

2.03 Tools

KS-14164—Brush

KS-14774—Lubricant

3. CLEANING

General

3.01 Before starting to clean, remove upper housing and coin chute. Check rejector mechanism for damage. If evident, replace upper housing. **DO NOT ATTEMPT TO BEND OR REPOSITION WHEELS OR CASTINGS.**

3.02 Clean pushbutton with small amount of KS-7860 petroleum spirits applied with KS-14164 brush, remove excess petroleum spirits and dirt with KS-2423 cloth, wipe dry and lubricate with small amount of KS-14774 lubricant.

3.03 Remove dust from rejector mechanism with dry KS-14164 brush; if wheels do not operate freely, clean with small amount of KS-7860 petroleum spirits applied with KS-14164 brush; remove excess petroleum spirits and dirt with pipe cleaner or equivalent. If wheels do not move freely after cleaning, replace upper housing. **DO NOT LUBRICATE.**

3.04 Clean upper mounting screws and springs with KS-2423 cloth moistened with KS-7860 petroleum spirits; clean bushings in coin chute with pipe cleaner or equivalent moistened with petroleum spirits, wipe dry, and lubricate with small amount of KS-14774 lubricant. Reassemble mounting screws and springs; remount coin chute in upper housing. **DO NOT LUBRICATE LOWER MOUNTING SCREW OR RUBBER GROMMET.**

4. PUSHBUTTON MECHANISM TESTS (UPPER HOUSING REMOVED)

4.01 The following tests apply in addition to the tests specified in Section C42.144 covering the maintenance of 191 and 195-type coin collectors.

4.02 With the pushbutton in its normal (out) position, there shall be no contact between the gate operating bracket and any part of the gate lever.

4.03 With the pushbutton in its normal (out) position the coin chute shall be in contact with both stop surfaces of the frame assembly.

4.04 The pushbutton when fully operated shall cause the coin chute to move approximately 1/4 in., thus causing the lower roller on the gate lever to contact the stationary bracket and operate the gate lever to within 1/32 in. of its fully operated position. Gauge by eye.

4.05 Release of the pushbutton shall allow the coin chute to move freely to its normal position against its stops on the frame assembly.

Caution: If the adjacent card holder mounting screw interferes with electromagnet cover, clip off end of screw.

4.06 With upper housing locked in place, and the cutover clip removed, deposit nickel in 5-cent slot, coin shall stop at first latch; depress coin release button, coin shall drop into coin return chute.

4.07 The pushbutton shall not bind in its fully "out" position, fully "in" position or at any point over its length of travel.

4.08 If pushbutton mechanism fails to meet above requirements, clean and lubricate as outlined in Part 3. After cleaning, if trouble is still experienced, replace upper housing or coin collector as required.

5. CONVERSION FROM 191 TO 196-TYPE AND 195 TO 197-TYPE COLLECTORS

5.01 Remove upper housing.

5.02 Check induction coil for position. If GN and R terminals are on the left-hand side, the induction coils should be removed and mounted as shown in Fig. 1.

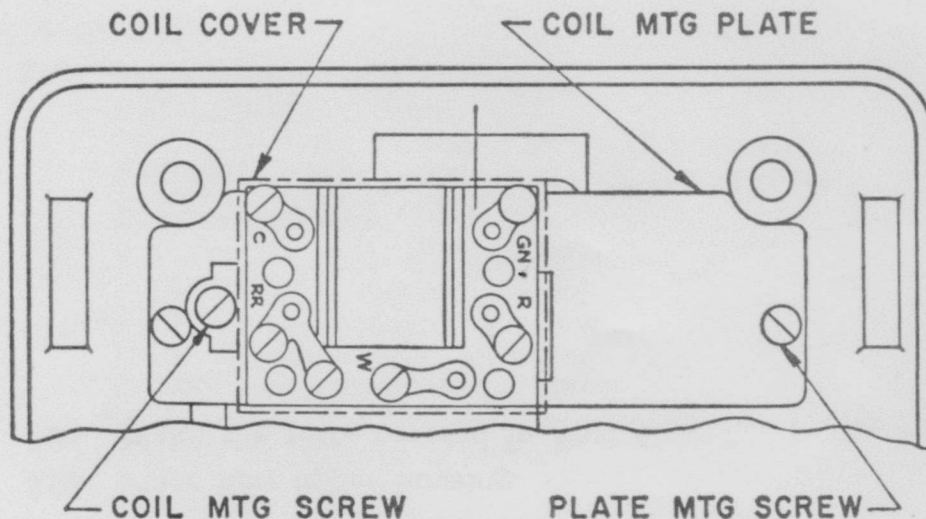


Fig. 1—Induction Coil Mounting

- 5.03 Place induction coil cover.
- 5.04 In 5-cent areas, insert cutover clip in chute.
- 5.05 Place new upper housing.
- 5.06 Make the tests covered in Part 4.