

BELL SYSTEM PRACTICES
Station Installation and Maintenance

ADDENDUM C42.138

~~C64.227~~

Issue 1, 3-25-52
AT&T Co Standard

PREPAYMENT COIN COLLECTORS

191-TYPE

TESTS AND ADJUSTMENTS

1. GENERAL

1.01 This addendum supplements Section C42.138 and C64.227, Issue 1. It is issued to provide for the replacement of the 452A condenser with the 452B condenser and the 195C condenser with the 452C condenser at high temperature locations or when the condenser compound is found to be leaking, to provide for the replacement of coin chutes that have rusted electromagnet armatures, latch springs or gate springs, and to call for coin chutes equipped with corrosion resistant latch and gate springs in areas where rusting is known to be prevalent. It also provides for turning the 452A condenser during station visits when the condenser is dismantled for any reason so as to minimize leakage of compound from the condenser. The 452B condenser is the same as the 452A condenser except for the filling compound and the 452C is similar to the 452B except for the capacitance. These new condensers are satisfactory under high temperature conditions. The 452B condenser should be mounted with the wire leads upward.

2. TESTS

Add paragraphs 2.07 and 2.08.

2.07 On all repair or inspection visits to any outdoor booth or to an indoor coin collector where leakage of compound is observed, replace the 452A condenser with the 452B condenser (see 3.08). Where excessive ambient temperatures may be encountered or when the condenser is dismantled for any reason, mount the 452A condenser with the wire leads upward (see 3.09) or replace the 452A condenser with a 452B condenser (see 3.08).

ADDENDUM

C42.138

C64.227

Page 1

PREPAYMENT COIN COLLECTORS
191-TYPE—TESTS AND ADJUSTMENTS

2.08 On all repair or inspection visits to any outdoor booth or to an indoor coin collector where leakage is observed, replace the 195C condenser with the 452C condenser (see 3.10). In some instances, when repeated leakage occurs from the 195C condenser, the lead casing may collapse to a point where the condenser unit will be grounded on the casing.

3. CLEARING TROUBLES

Add paragraphs 3.07, 3.08, 3.09, and 3.10.

Add Figs. 3, 4, and 5.

3.07 When either a 452A or B condenser is located under the return shelf, it shall be mounted as shown in Fig. 3.

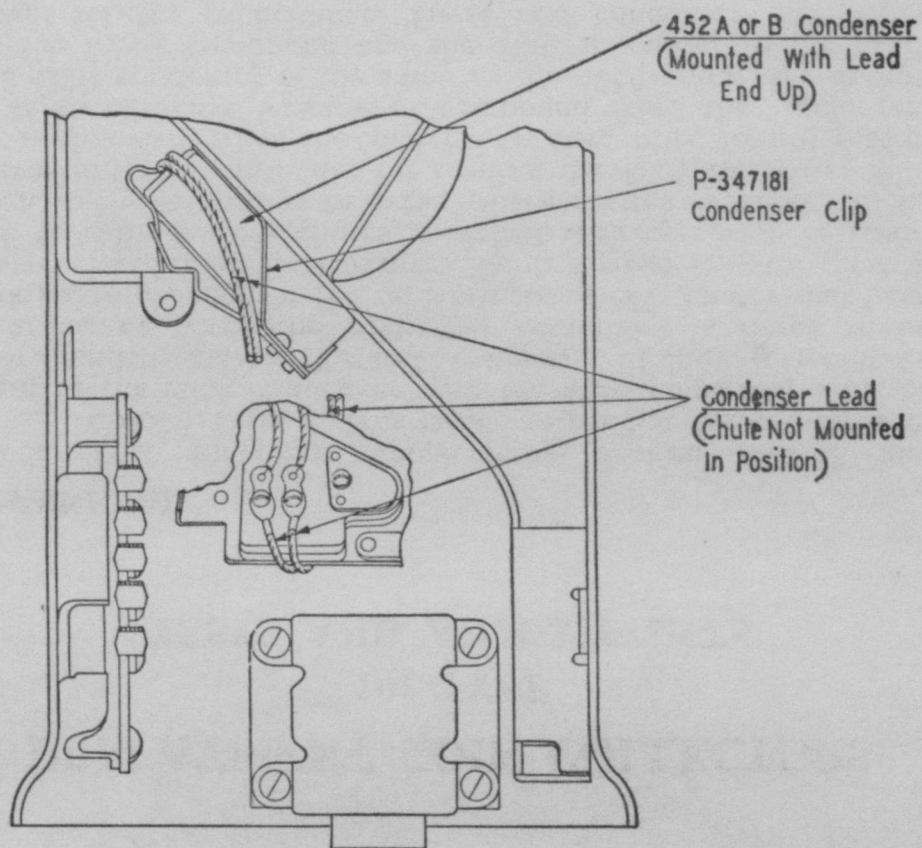
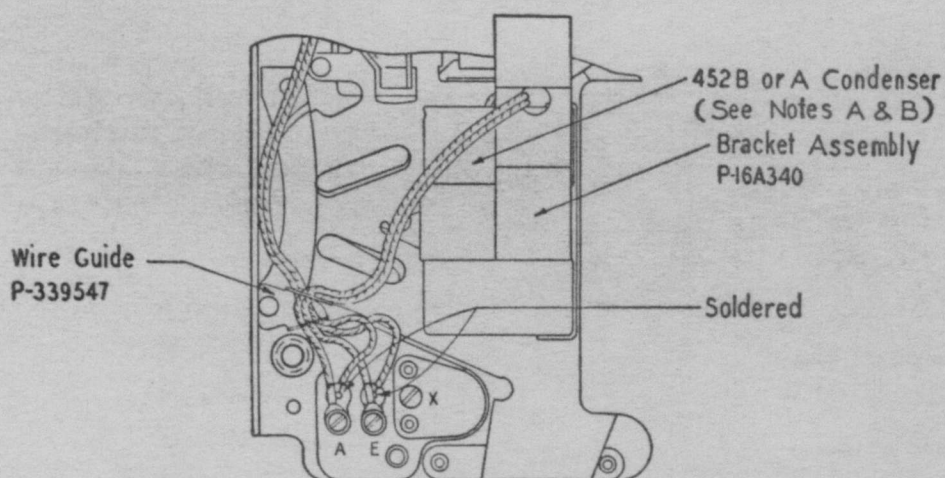


Fig. 3—Condenser Arrangement Mounted Under Return Shelf

3.08 When a 452B condenser is located on the coin chute it shall be mounted as follows:

- (a) If bracket assembly P-16A340 with wire guide hole is used, the condenser and leads shall be mounted and arranged as shown in Fig. 4.
- (b) If bracket assembly P-16A340 without wire guide hole or old style bracket P-347186 is used, after securing the leads with tape, mount the condenser as shown in Fig. 5 and arrange the leads through the wire guide as shown in Fig. 4.



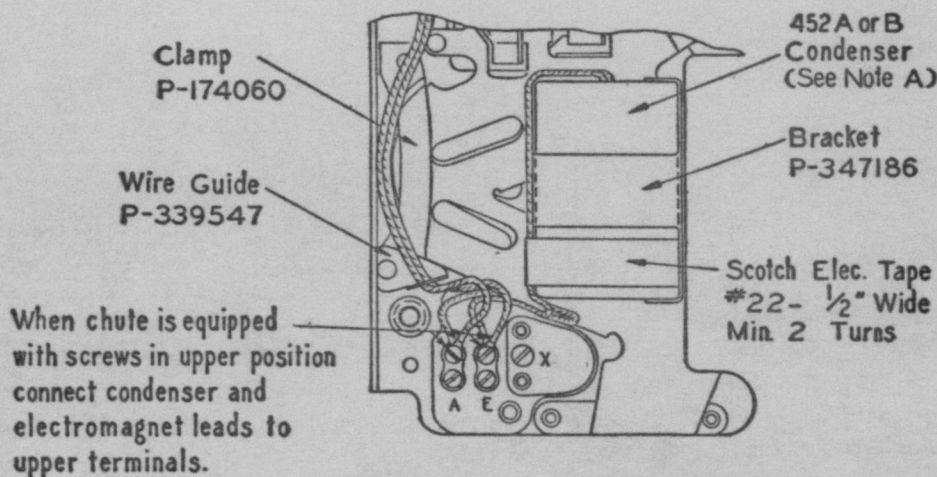
Notes.

- A. When bracket assembly is not provided with wire guide hole, the condenser leads shall be arranged and taped to the condenser as shown in Fig. 5.
- B. When the 452A condenser has short leads, the leads need not go through the wire guide but shall be arranged at the terminal plate as shown in Fig. 5.

Fig. 4—Condenser Arrangement Using Long Leads and Bracket with Wire Guide and Wire Hole

3.09 When a 452A condenser is located on the coin chute, it shall be mounted as follows:

- (a) If bracket assembly P-16A340 without wire guide hole or old style bracket P-347186 is used and the condenser has short leads, after securing the leads to the condenser, mount the condenser and arrange the leads as shown in Fig. 5.
- (b) If the old style bracket P-347186 is used and the condenser has long leads, mount the condenser and secure the leads at the condenser as shown in Fig. 5 and arrange the leads through the wire guide as shown in Fig. 4.
- (c) If the bracket assembly P-16A340 with wire guide hole is used and the condenser has short leads, mount the condenser and arrange the leads as shown in Fig. 4 except that the leads shall not be run through the wire guide.
- (d) If the bracket assembly P-16A340 with wire guide hole is used and the condenser has long leads, mount the condenser and arrange the leads as shown in Fig. 4.



Notes:

- A. When a 452B condenser or a 452A condenser with long leads is used, the condenser leads shall be arranged through the wire guide as shown in Fig. 4.

Fig. 5—Condenser Arrangement Using Short Leads and Bracket without Guide

3.10 The 452C condenser shall be mounted with the wire lead end in the same location as the 195C condenser and with the indentation in the edge of the can adjacent to the upper housing mounting lug on the backplate.

5. CLEANING

Add paragraphs 5.02 and 5.03.

5.02 Replace coin chutes that show definite signs of rusting on the electromagnet armature, or latch spring, or the gate spring. **Do not attempt to remove the rust.**

5.03 Coin collectors used in areas where trouble from rusting is known to be prevalent shall be equipped with coin chutes having the latch spring and the gate spring made of corrosion resistant material (when available).

Note: This can best be accomplished by using new chutes having a date of manufacture subsequent to 1-1-52, or by special order on the local repair shop.

ADDENDUM

C42.138

C64.227

Page 5

5 Pages

PREPAYMENT COIN COLLECTORS
191-TYPE—TESTS AND ADJUSTMENTS