

KEY TELEPHONE SETS

565LDR

COMMON BATTERY - CONNECTIONS

1.00 GENERAL

1.01 The 6-button 565LDR telephone set is equivalent to 565LBR telephone set but is equipped with a plug-ended mounting cord. Mounting cord is a D50D, 50-conductor, plug-ended cord using even count color code. It is provided in standard 5-foot 6-inch length.

1.02 In addition to the service features of 565LDR set, auxiliary services such as externally mounted buzzers, lamps, keys, etc, can be connected from the set by means of an auxiliary cord. The cords to be used are:

549B Key	D6AD Cord
549D Key	D10L Cord
1A1 Speakerphone	D10L Cord
3A Speakerphone	D10L Cord

These cords are provided in 5-foot 6-inch length and are available in standard colors. Other standard cords may be employed as needed for 15- and 21-type lamp indicators, external ringers, and external buzzers.

1.03 The 565LDR is equipped with four line keys (one of which is convertible to a signal key), a hold key, a cutoff key, an exclusion switch, and connections for speakerphone use.

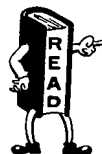
1.04 This set has a single-gong H1A ringer and is arranged to mount a KS-8109 buzzer. The necessary hardware for mounting buzzer is provided as part of the ringer. Buzzer must be ordered separately when required.

1.05 An auxiliary terminal strip composed of six double terminals is mounted in a vertical position at the left of switch assembly and provides facilities for auxiliary cord connections.

1.06 Lamp strip is designed to connect paired lamp and lamp ground leads. Facilities are provided for a lamp in the hold key position but the lamp is not part of the equipment.

1.07 Conductors required for connecting to speakerphone control unit are available at both ends of mounting cord. These leads may be extended to control unit at the plug end by using a 148A or 149A adapter or with the A25B connector cable. Where an additional mounting cord is not objectionable, leads may be extended from within telephone set to control unit by means of an auxiliary cord.

1.08 Cord tip insulators on 148A adapter must be removed to terminate conductors.



Do not pull insulator off with long-nose pliers. Insulators must be cut off with electricians' scissors or diagonal pliers to prevent breaking conductors or stripping off cord tips.

1.09 This section is reissued to:

- Change switch assembly in Fig. 2.
- Renumber the Notes in Fig. 2.
- Add references to 149A adapter and D6AD and D10L cords.
- Add 1.08.

1.10 Due to extensive changes marginal arrows have been omitted.

2.00 CONNECTIONS

The 565LDR set is furnished wired for 1A1 key systems. These sets

have the red and black ringer leads wired to terminals RR and RT, respectively. Telephone sets wired with the black and red ringer leads on the RR and RT ter-

minals will have a plus (+) sign after the code number on base of set. Conversion tables used in conjunction with Fig. 1 and 2 are for various rearrangements.

TABLE A
LINE EXCLUSION

Exclusion	Key Tel Sys	Exclusion Key Leads			
		R-Y	G-Y	BR-R	BK-W
On Any Line	1A	R*	T*	1B†	H*
	1A1	R*	T*	EB	H*

* Terminal of line involved.

† See Note 8.

TABLE B
CUTOFF OF RINGER OR BUZZER IN SET
(R and RR terminals on terminal strip)

Cutoff		Leads							
		Ringer				Buzzer		Cutoff Key	
		R	BK	S	S-R	R	BK	R-W	G-W
Of Bridged Ringer on Any Line		CR	CT	K	A			R*	T*
Of Common or Private Line Ringer or Buzzer (See Note 2)	With Cap.	CR	CT	K	A			RR	RT
	With-out Cap.	CR	CT	A	A	CR	CT	RR	RT
Of Bridged Line Ringer When Used with First Feature on Table C		XR	XT	K	A			R*	T*

* Terminal of line involved.

TABLE C
CUTOFF OF EXTERNAL CIRCUITS

Cutoff	Cutoff Key Leads	
	R-W	G-W
Of Ring and Tip of Any Line	R*	T*
Of Head Receiver Used as Listening-In Set	R†	GN†
Of Controlled 1A1 Key Tel Sys Sta	CT	XT

* Terminal of line involved.
† Terminal on network.

TABLE D
1A AND 1A1 CONVERSION
(R terminal on terminal strip)


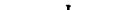
Sta Bsy Lp Ckt	Key Tel Sys	Leads					M1W Cord 	Diode KS-15724, L1 
		Switch			Hold Key			
		S-W	S-G	S-Y	Y	Y-BK		
No	1A	1B	1B	N	R	M		
	1A1	1B	N	R	M	N		
Yes	1A	SG	L2	N	R	M		
	1A1	1B	L2	R	M	N	G to N	G to L2

TABLE E
PICKUP SIGNAL KEY CONVERSION
(See Notes 5 and 6)

Convertible Key Options	Key Lead S-BR
HPPPPC	M
HPPPSC	SG

TABLE F
RINGER OR BUZZER CONNECTIONS
(RR terminal on terminal strip)

Option	Leads					
	Ringer				Buzzer	
	R	BK	S	S-R	R	BK
Bridged Ringer on Any Line	R*	T*	K	A		
Common or Private Line Ringer or Buzzer (See Note 2)	RR	RT	K	A		
	RR	RT	A	A	RR	RT
Ringer Permanently Silenced	A	K	K	A		

* Terminal of line involved.

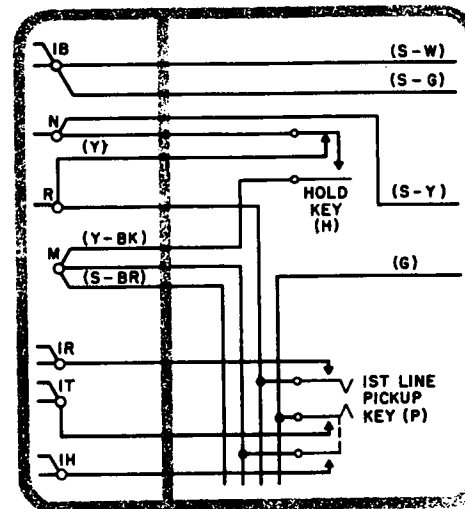


Fig. 1 - Wired for 1A Key System

TABLE G
CUTOFF OF SET RINGER OR BUZZER BY EXCLUSION KEY
(RR terminal on terminal strip)

Cutoff	Leads									
	Ringer				Buzzer		Exclusion Key			
	R	BK	S	S-R	R	BK	R-Y	G-Y	BR-R	BK-W
Bridged Ringer on Any Line	ER	ET	K	A			R*	T*	EB	EH
Common or Private Line Ringer or Buzzer (See Note 2)	ER	ET	K	A			RR	RT	EB	EH
							RR	RT	EB	EH

* Terminal of line involved.

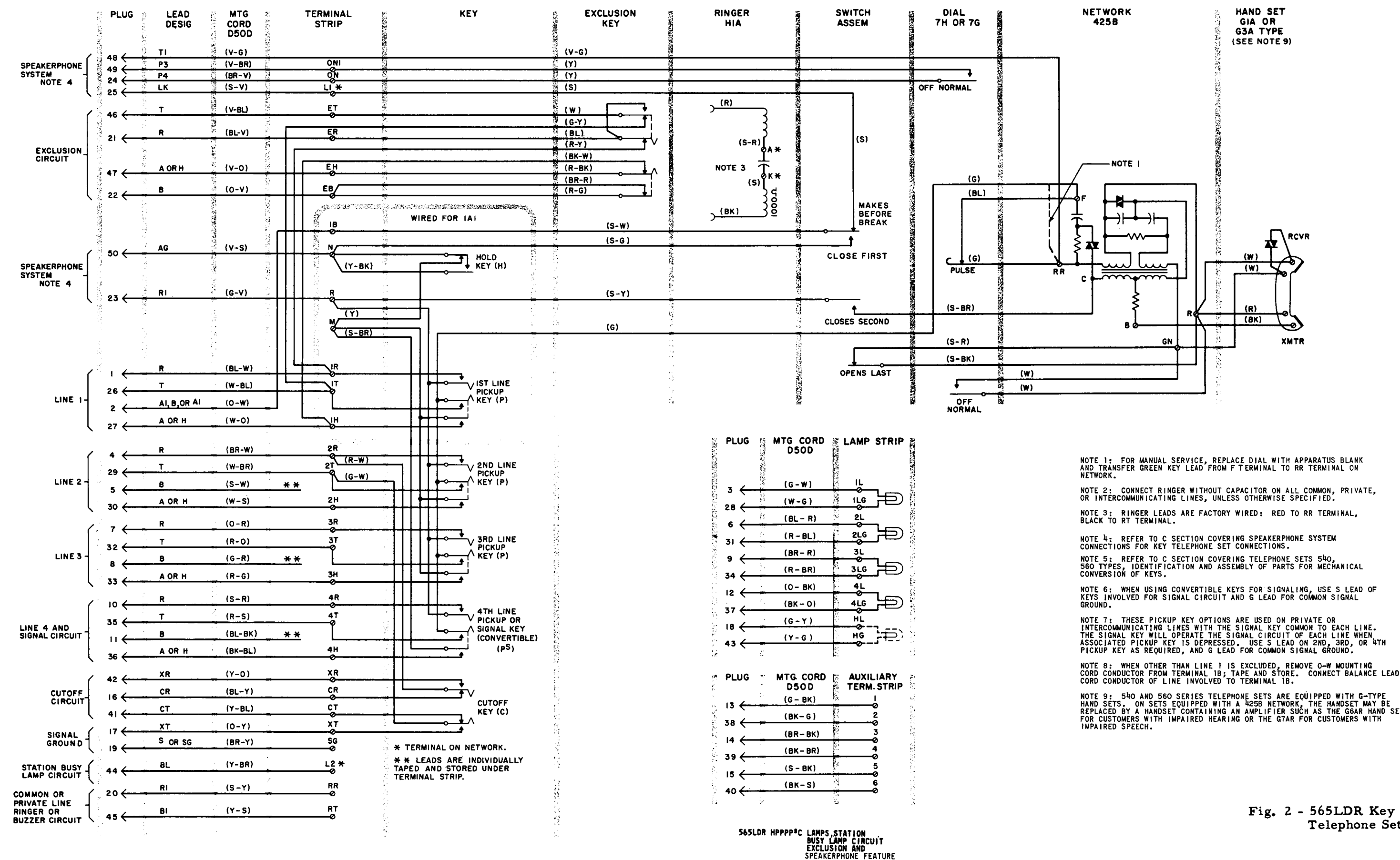


Fig. 2 - 565LDR Key Telephone Set