

TELEPHONE SETS
GS-E-69234
WALL TYPE WITH RECEIVER AMPLIFIER

GENERAL

1.00 IDENTIFICATION

1.01 This section covers general information on the wall type telephone set modified per GS-E-69234 for subscribers with impaired hearing. This set includes a transistor amplifier and a volume control assembly. Drawing GS-E-69234 is included as part of this section.

1.02 This section is reissued to include detailed identification and ordering information as well as manual service options, party line and 1A1 key telephone system installations.

Table A - Combination of Apparatus

	Components							
	Use	Tube	Dial	Handset	Ringer	Network	Diode	Amp.
GS-E-69234, L1 GS-E-69234, L2	Dial	426A	7G/7H*	G1A	C4A	425B	419A	151B
* Note: GS-E-69234 wall type amplifier set will be supplied for dial service and may be modified for manual service by removing the dial and moving the diode lead at the "F" terminal of the 425B network to the "RR" terminal. Use a 95B apparatus blank. Refer to Note 7.								

1.03 The wall type amplifier set is available in two types; individual line (List 1) or four or eight party line (List 2) and may be ordered as follows:

(Quantity) - Set, Telephone, per GS-E-69234 List 1
or (Quantity) - Set, Telephone, per GS-E-69234 List 2.

When colored set is required add the proper color code number, i. e. (for Ivory):

(Quantity) - Set, Telephone, per GS-E-69234 List 1-50
or (Quantity) - Set, Telephone, per GS-E-69234 List 2-50.

2.00 INSTALLATION

2.01 Installation of the GS-E-69234 telephone set is made on the same basis as the 554B wall type telephone set. This information may be found in the applicable C38 series Bell System Practice.

2.02 For manual service, remove dial, move strap (from diode) from "F" terminal to "RR" terminal of the 425B network as indicated in Fig. 1. Place 95B-_____ (appropriate color code) apparatus blank.

SECTION C38.902

- 2.03 For 4 and 8 party line service, ringer and tube wiring will be provided per Table "B" for "negative Ring (1 & 5)" (See GS-E-69234). For severe induction conditions in this service refer to the appropriate Bell System Practice in the C38 series.
- 2.04 For "A" lead control in the 1A1 key telephone system make the following changes:
- (a) Move "S-W" lead from #4 terminal of the 419A diode and connect to "A1" lead of 1A1 system using D161488 connector or equivalent.
 - (b) Move incoming line from "L1" terminal of the 425B network to #4 terminal of the 419A diode.
 - (c) Connect "A" lead of 1A1 system to "L1" terminal of the 425B network.

3.00 MAINTENANCE

- 3.01 The maintenance specifications may be found by referring to the appropriate Bell System Practice in the C38 series and apply as well to the maintenance of the GS-E-69234 telephone sets.
- 3.02 The following piece part numbers or types may be required for maintenance purposes:

<u>Description</u>	<u>Piece Part No. or Type</u>
Amplifier	151B
Diode	419A
Assembly, Potentiometer	P-13A693
Assembly, Knob	P-17A464
Bracket, Potentiometer	P-17A466
Connector	D-161488
Screw, Machine, Head, Round	P-294615
Nut, Hex	P-125952
Dial, Black	7G-3
Dial, Colored	7H-___ (appropriate color code)

4.00 CONNECTIONS

- 4.01 Refer to GS-E-69234 attached.

FIG. 1

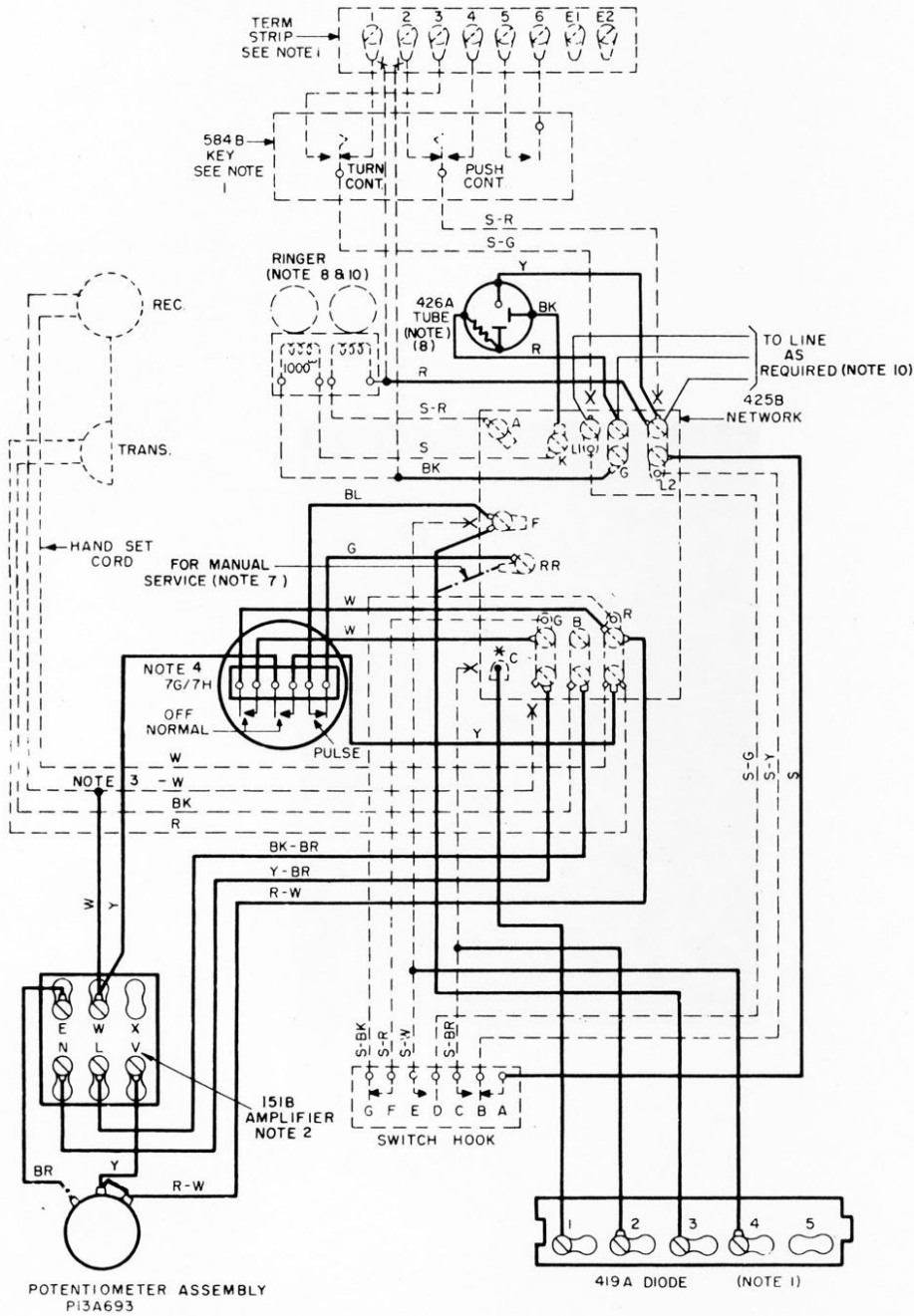
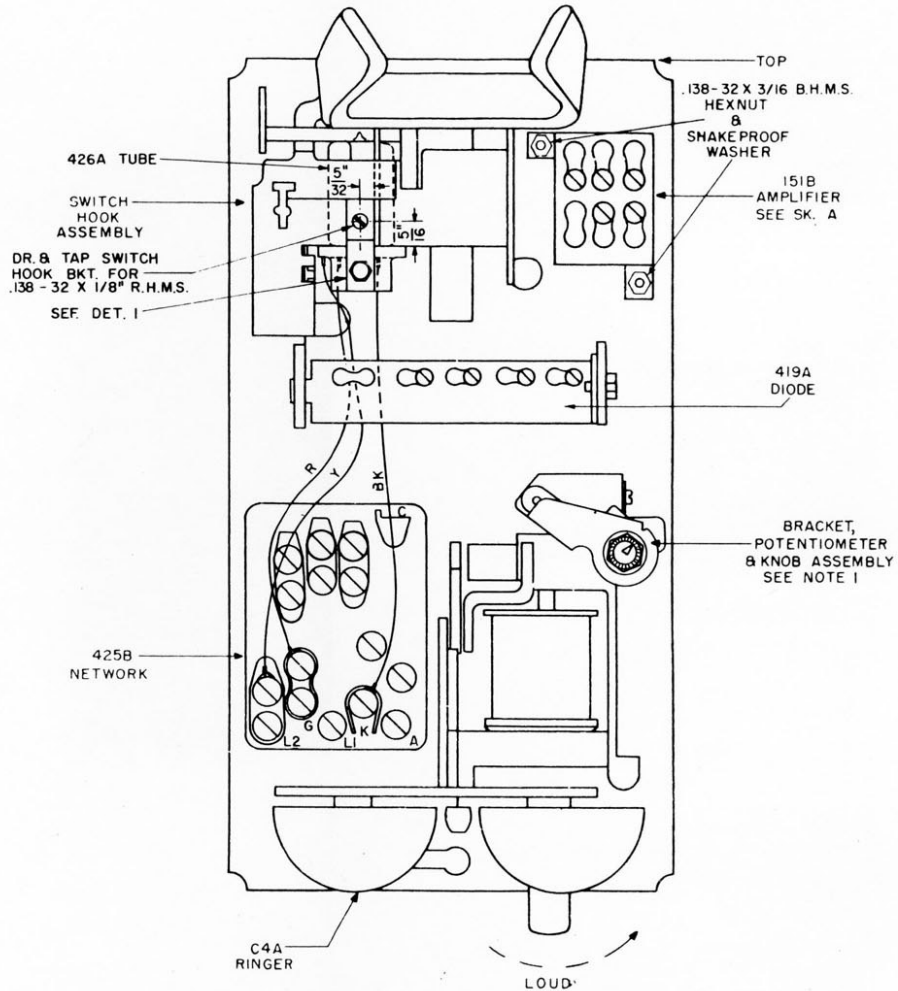


FIG. 2

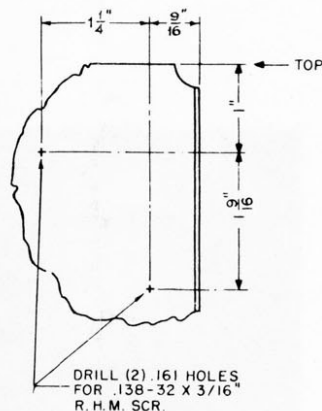


Scanned for TCI Library 2009, www.paul-f.com

TABLE "A"

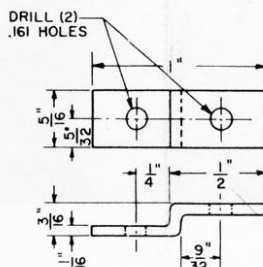
CONNECTIONS FOR 556B & BR TELEPHONE SETS

4 - PARTY SELECTIVE OR 8 - PARTY SEMI- SELECTIVE SERVICE	LINE			TUBE			RINGER			
PARTY	R	T	G	Y	BK	R	R	BK	SL	S-R
NEGATIVE RING (1 & 5)	L2	L1	G	L2	K	G	G	G	A	K
NEGATIVE TIP (2 & 6)	L1	L2	G	L2	K	G	G	G	A	K
POSITIVE RING (3 & 7)	L2	L1	G	G	K	L2	L2	L2	A	K
POSITIVE TIP (4 & 8)	L1	L2	G	G	K	L2	L2	L2	A	K



SKETCH A

DRILLINGS FOR MTG. 151B AMPL.



DET. 1

SPL. MTG. BRACKET
MAT: COLD ROLLED STEEL
SCALE: 2" = 1"

LEGEND:-

- EXISTING
- NEW
- ✕--- DISCONNECT
- ✕--- RECONNECT

* SOLDER & UNSOLDER CONNECTIONS
AT 425B NETWORK

STOCK LIST				SL
558 TELEPHONE SET CONVERTED TO 556B, OR BR WITH RECEIVER AMPLIFIER				
558 TELEPHONE SET CONVERTED TO 554B, OR BR WITH RECEIVER AMPLIFIER				
LIST 2 REQ	LIST 1 REQ	DETAIL OR PIECE N°	NAME	
1	1		TELEPHONE SET 558BR (NOTE 9)	
1	1		151B AMPLIFIER	
1	1		419A DIODE	
1	1	P-13A693	POTENTIOMETER ASSEMBLY	
1	1	P-17A464	KNOB ASSEMBLY	
1	1	P-17A466	BRACKET	
1	1		D161488 CONNECTOR	
2	2	P-128912	.138-32 X 3/16" B.H.M. SCR.	
2	2	P-125952	.138-32 HEX NUTS	
2	2		#6 SHAKE PROOF WASHER	
1	1	P-251072	.138-32 X 1/8" R.H.M. SCR.	
1	1		426A ELECTRON TUBE	
1	1	DET. 1	SPECIAL MOUNTING BRACKET**	

** OBTAIN FROM:
J.S. POPPER CO.
UNION CITY, N.J.

NOTES:-

1. REMOVE EXISTING 5848 KEY REUSING EXISTING BRACKET (P-17A750) TO MOUNT P-13A693 POTENTIOMETER, P-17A464 KNOB ASSEMBLY AND P-17A466 BRACKET. REUSE THE TWO SPL HEX. SCREWS. REPLACE EXISTING TERMINAL STRIP WITH 419A DIODE REUSING PRESENT HARDWARE.
2. MOUNT 151B AMPLIFIER IN UPPER RIGHT HAND CORNER OF SET.
3. USE D161488 CONNECTOR & STRAP WIRE TO REACH 151B AMPLIFIER.
4. REPLACE 7D DIAL WITH 7G (OR 7H IN APPROPRIATE COLOR) DIAL AND WIRE AS INDICATED.
5. ADD (-3) FOR BLACK OR PROPER CODE FOR COLOR.
6. WHEN COLOR OF WIRE IS NOT DESIGNATED, USE STRAP WIRE.
7. TO CONVERT TO MANUAL SERVICE, REMOVE DIAL MOVE STRAP(FROM DIODE) OFF 'F' TERMINAL TO 'RR' AND USE 95B- APPARATUS BLANK.
8. FOR 4 & 8 PARTY SERVICE CONNECT 426A ELECTRON TUBE AS INDICATED IN FIG. 1 & 2. RINGER AND TUBE WIRING WILL BE PROVIDED PER TABLE 'A' FOR 'NEGATIVE RING (1 & 5)'. FOR SEVERE INDUCTION CONDITIONS IN THIS SERVICE REFER TO CHANGES IN APPROPRIATE B.S.P. IN C38 SERIES.
9. FOR 'A' LEAD CONTROL IN IAI KEY TELEPHONE SYSTEM MAKE THE FOLLOWING CHANGES:
 - (a) REMOVE 'S-W' LEAD FROM #4 TERMINAL (419A DIODE) & CONNECT TO 'AI' LEAD OF IAI SYSTEM USING D161488 CONNECTOR OR EQUIV.
 - (b) MOVE INCOMING LINE FROM 'LI' TERMINAL (NETWORK) TO #4 TERMINAL (419A DIODE)
 - (c) CONNECT 'A' LEAD OF IAI SYSTEM TO 'LI' TERMINAL (NETWORK).
10. WIRING TO BE SUPPLIED AS SHOWN FOR TIP OR RING PARTY FLAT & MESSAGE RATE. FOR OTHER LINE & RINGER CONNECTIONS REFER TO APPROPRIATE B.S.P. IN C38 SERIES.