

TELEPHONE SETS

940-TYPE

1. GENERAL

1.01 This section contains identification, installation, and connection information for the 940A (MD), 940B (MD), and 940C (Fig. 1) DESIGN LINE* telephone (*Celebrity*) sets.

* Trademark of AT&T.

1.02 This section is reissued to:

- Update Fig. 1 and 2
- Revise Table A
- Show set connections using 625-type connecting block, Fig. 3 and 4.
- Show all 940A and 940B codes MD, 940C40-50 and 940C41-62 (MD)

Warning: Telephone apparatus or wiring shall not be installed in a location where minimum separation from other wiring, as specified in Section 460-300-149, cannot be maintained.

1.03 The customer's premises must be properly wired with an appropriate connecting block or jack in order to accept the D4BU-29 plug-ended mounting cord.

2. IDENTIFICATION

2.01 The 940A, 940B, and 940C rotary dial equipped telephone sets are new DESIGN LINE telephone sets being made available to the customer. The customer buys the housing, handset, and decorative features from the telephone company and the telephone company retains ownership of the transmission and signaling components which are mounted on a removable base (Fig. 2) and incorporated in the handset.



Fig. 1—940-Type DESIGN LINE Telephone Set†

Ordering Guide (Refer to Table A)

2.02 Basic Telephone Set Ordering Information:

Example: Set, Telephone, 940C41-50† is an ivory set equipped with a rotary dial and gold trim (Fig. 1).

† Refer to Table A for available color and trim information.

2.03 These telephone sets are intended to be used as single line or two-party desk sets and cannot be used on four- and eight-party service.

3. INSTALLATION AND CONNECTIONS

3.01 These telephone sets are furnished from the factory fully assembled and wired for bridged ringing. The P1A ringer is shipped from

NOTICE

Not for use or disclosure outside the
Bell System except under written agreement

◆ TABLE A ◆

ORDERING GUIDE

TEL SET	PLASTIC COLOR	TRIM COLOR	DIAL	HANDSET CORD	MTG CORD
CODE					
940C41-50	Ivory	Gold	8HA	H4DU-50	D4BU-29
940C40-62	Blue	Chrome		H4DU-62	

the factory with the bias spring in the low bias position. To connect the telephone set, plug the mounting cord into a 625-type connecting block or if the existing jack is a 548A or equivalent, a 225A adapter is required and must be ordered separately.

3.02 The internal connections for the 940-type telephone sets nonkey system use are shown in Fig. 3.

3.03 Connections for 1A KTS do not require any telephone set modifications and are wired same as Fig. 3.

3.04 Connections for use with 1A1 or 1A2 KTS are shown in Fig. 4. Table C includes necessary wiring modifications required for 1A1 or 1A2 key telephone system use.

3.05 To gain access to the interior of these sets for wiring changes, refer to Part 4.

3.06 Line and Ringer Connections:

- (1) For single line and two-party service, refer to Table B.
- (2) For adjustments and ringer cutoff feature of the P1A ringer, refer to Section 501-259-101.

4. REMOVAL OF TELEPHONE COMPANY-OWNED COMPONENTS

4.01 When it is desired to discontinue telephone service of the 940-type DESIGN LINE telephone set proceed as follows:

Note: Remove only the telephone company-owned components that can be easily removed.

(1) Remove handset cord from handset and telephone set base.

(2) Remove mounting cord from telephone set base and connecting block or adapter.

(3) Remove three housing mounting screws located on bottom outer edge of the baseplate (Fig. 2).

(4) Remove upper and lower housing by lifting them off.

(5) After removing telephone company-owned components reassemble upper and lower housings using the three housing mounting screws (Fig. 2).

4.02 Follow local procedures for returning components.

4.03 When it is necessary to return a set to Western Electric for repair, it should be packed using the D-180600 Kit of Parts which contains packing material and instructions.

TABLE B
LINE AND RINGER CONNECTIONS†

WIRE OR LEAD	COLOR	INDIVID. OR BRIDGED	RING PARTY	TIP PARTY		
				NO IDENT GROUND	IDENTIFYING GROUND	
					1000Ω	2650Ω
Inside Wire at Conn Block or Jack	R	R	R	R	R	R
	G	G	G	G	G	G
	Y	Y	Y	Y	Y	Y
	BK	B	B	B	B	B
623P4 Mtg Cord Jack Assy	R	A	A	L1	F	F
	G	L1	L1	A	L2	L2
	Y	G	G	G	G	G
	BK	L2	L2	L2	*	*
Ringer	R	K	K	K	K	K
	S-R	*	*	*	*	L1
	S	*	*	*	L1	*
	BK	L1	G	G	G	G
Line Switch	Y	A	A	A	L2	L2
	W	F	F	F	B	B

* Insulated and stored.

† For access to set wiring follow applicable steps in Part 4.

TABLE C
MODIFICATIONS FOR 1A1 OR 1A2 KTS *

LEAD	COLOR	NET TERM.	
		REMOVE FROM	CONNECT TO
Line Switch	S	A	L2
	Y	A	L2
	BR	C	G
	G	L1	A
	W	F	C
623P4 Mtg Cord Jack Assy	G	L1	F
Ringer	BK	L1	F

* For access to set wiring follow applicable steps in Part 4.

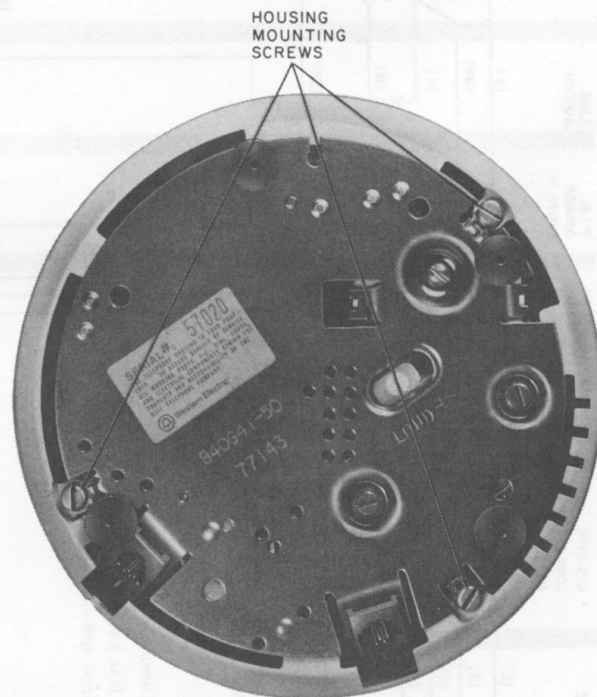


Fig. 2—940C Telephone Set, Bottom View



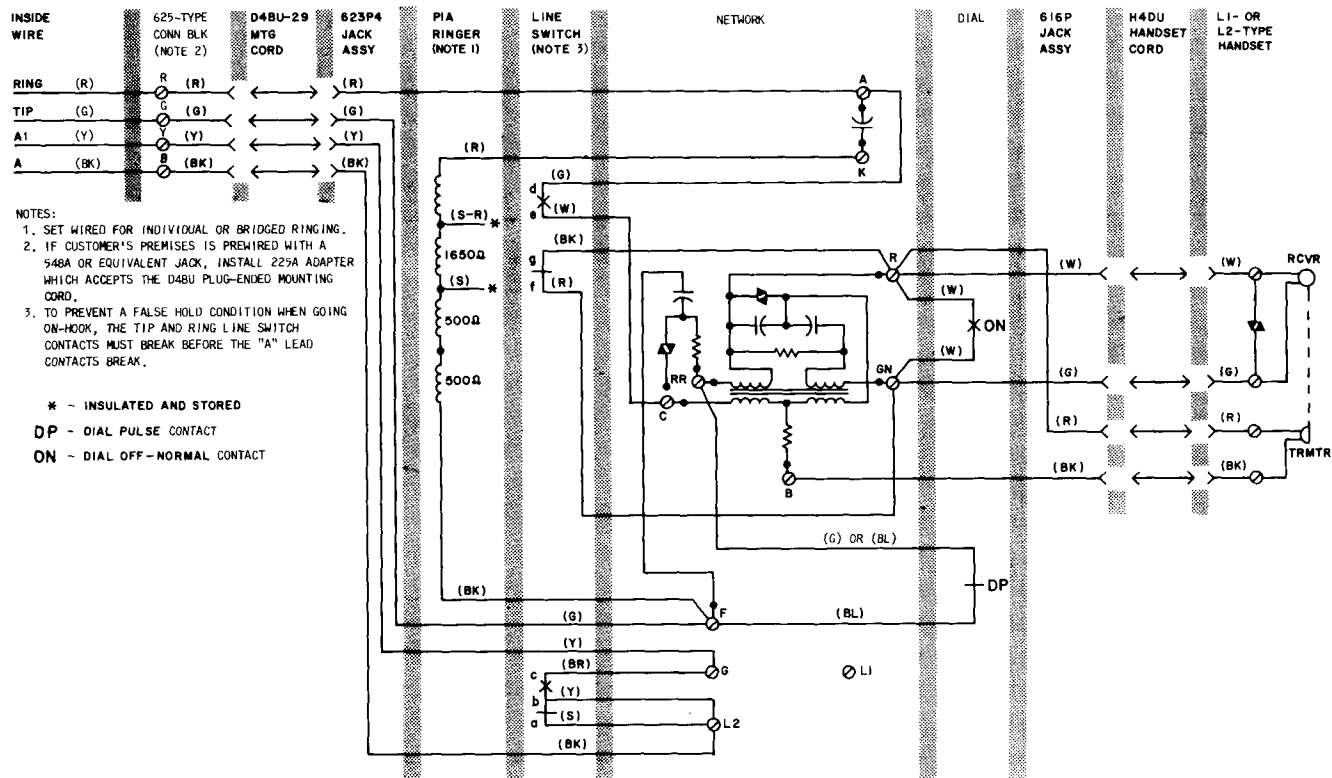


Fig. 4—940-Type Telephone Set Connections, Wired for 1A1 or 1A2 KTS