

TELEPHONE SETS 910A AND 2910A

1. GENERAL

1.01 This section contains identification, installation, and connection information for the 910A (Fig. 1) and 2910A (Fig. 2) DESIGN LINE* telephone (*Stowaway*) sets.

*Trademark of AT&T.

1.02 This section is reissued to:

- Update Fig. 1, 2, 4, 5, and 6
- Revise Table A
- Show set connections using 625-type connecting block, Fig. 7, 8, 9, and 10.

Warning: Telephone apparatus or wiring shall not be installed in a location where minimum separation from other wiring, as specified in Section 460-300-149, cannot be maintained.

1.03 The customer's premises must be properly wired with an appropriate connecting block or jack in order to accept the D4BU-29 plug-ended mounting cord.

2. IDENTIFICATION

2.01 The 910A (rotary dial) and 2910A (TOUCH-TONE® dial) equipped telephone sets are new DESIGN LINE telephone sets being made available to the customer. The customer buys the housing and handset from the telephone company and the telephone company retains ownership of the transmission and signaling components which are mounted on a removable base (Fig. 4, 5, or 6) and incorporated in the handset.



Fig. 1—910A DESIGN LINE Telephone Set

Ordering Guide (Refer to Table A)

2.02 Basic Telephone Set Ordering Information:

Example: Set, Telephone, 910A10-50† is an ivory set with chrome trim and is equipped with a rotary dial and an oiled walnut cabinet (Fig. 1 and 3).

†Refer to Table A for available color, trim, and cabinet information.

2.03 These telephone sets are intended to be used as single line or two-party common battery desk sets and cannot be used on four- and eight-party service.

NOTICE

Not for use or disclosure outside the
Bell System except under written agreement



Fig. 2—2910A DESIGN LINE Telephone Set

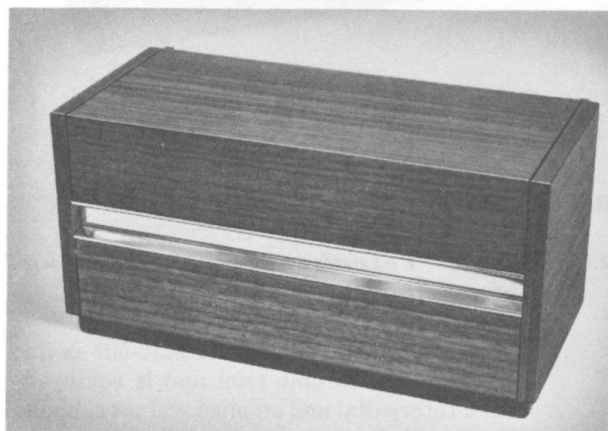


Fig. 3—910A or 2910A DESIGN LINE Telephone Set with Cover Closed

2.04 Optional Components (order separately):

- D-180461 Guard Assembly (polarity guard)
- D-180460 Kit of Parts (bracket and two screws for polarity guard).

3. INSTALLATION AND CONNECTIONS

3.01 These telephone sets are furnished from the factory fully assembled and wired for bridged ringing. The P1A ringer is shipped from the factory with the bias spring in the low bias position. To connect the telephone set, plug the mounting cord into a 625-type connecting block or if the existing jack is a 548A or equivalent, a 225A adapter is required and must be ordered separately.

3.02 The internal connections for the 910A and 2910A telephone sets, for nonkey system use, are shown in Fig. 7 and 8, respectively.

3.03 Connections for 1A KTS do not require any telephone set modifications and are wired same as Fig. 7 and 8.

3.04 Connections for use with 1A1 or 1A2 KTS are shown in Fig. 9 for 910A telephone set and Fig. 10 for 2910A telephone set. Table D includes necessary wiring modifications required for key telephone system use.

3.05 To gain access to the interior of these sets for wiring changes, refer to Part 4.

3.06 For end-to-end signaling purposes where battery and ground reversals are encountered, install a polarity guard (D-180461) in the 2910A telephone set. Refer to Table E for connections.

3.07 To install the D-180461 Guard Assembly proceed as follows:

- (1) Select the (840360408) bracket and two screws from the D-180460 Kit of Parts and discard the remaining parts.

◆ TABLE A ◆

ORDERING GUIDE

TEL SET CODE	PLASTIC COLOR	CABINET	TRIM COLOR	DIAL INSERT COLOR	DIAL	MTG CORD
910A10-50	Ivory	Oiled Walnut	Chrome	Chrome	RTY	D4BU-29
2910A10-50				None	TT	
910A11-50	Ivory	Mediterranean	Gold	Gold	RTY	
2910A11-50				None	TT	

(2) Install the bracket in the mounting holes between the line switch and network on the 2910A telephone set baseplate. Make sure the bracket tab fits into the square hole in the baseplate. Fasten bracket firmly into the baseplate using the two screws from the kit of parts.

(3) Mount guard assembly to the bracket using screw which is furnished.

3.08 Line and Ringer Connections:

- (1) For single line and two-party service, refer to Tables B and C.
- (2) For adjustments and ringer cutoff feature of the P1A ringer, refer to Section 501-259-101.

4. REMOVAL OF TELEPHONE COMPANY-OWNED COMPONENTS

4.01 When it is desired to discontinue telephone service of the 910A or 2910A DESIGN LINE telephone sets, proceed as follows:

Note: Remove the telephone company-owned components that can be easily removed.

- (1) Unplug the cord from the handset and remove the handset from the telephone set.

(2) Cut the cord reel cord close to the plastic grommet on the housing, Fig. 1 and 2.

(3) Unplug the mounting cord from the base of the telephone set.

(4) Remove the two screws, one at each end, from the metal housing base of the wooden box (Fig. 4).

(5) Remove the four screws, two at each end, from the 910A or 2910A telephone set base (Fig. 5).

(6) Withdraw the base slowly from the housing (Fig. 6).

(7) Reassemble metal housing base to the box end brackets. See Fig. 4 and 6.

4.02 Follow local procedures for returning telephone company-owned components.

4.03 When it is desired to return a set to Western Electric for repair, it should be packed using the D-180600 Kit of Parts which contains packing materials and instructions.

TABLE B
LINE AND RINGER CONNECTIONS
(910A TELEPHONE SET) †

WIRE OR LEAD	COLOR	INDIVID. OR BRIDGED	RING PARTY	TIP PARTY		
				NO IDENT GROUND	IDENT GROUND	
					1000Ω	2650Ω
Inside Wire at Conn Block or Jack	R	R	R	R	R	R
	G	G	G	G	G	G
	Y	Y	Y	Y	Y	Y
	BK	B	B	B	B	B
623P4 Mtg Cord Jack Assy	R	A	A	L1	F	F
	G	L1	L1	A	L2	L2
	Y	G	G	G	G	G
	BK	L2	L2	L2	*	*
Ringer	R	K	K	K	K	K
	S-R	*	*	*	*	L1
	S	*	*	*	L1	*
	BK	L1	G	G	G	G
Line Switch	Y	A	A	A	L2	L2
	W	F	F	F	B	B

* Insulated and stored.

† For access to set wiring, follow applicable steps in Part 4.

TABLE C
LINE AND RINGER CONNECTIONS
(2910A TELEPHONE SET) †

WIRE OR LEAD	COLOR	INDIVID. OR BRIDGED	RING PARTY	TIP PARTY		
				NO IDENT GROUND	IDENT GROUND	
					1000Ω	2650Ω
Inside Wire at Conn Block or Jack	R	R	R	R	R	R
	G	G	G	G	G	G
	Y	Y	Y	Y	Y	Y
	BK	B	B	B	B	B
623P4 Mtg Cord Jack Assy	R	A	A	L1	C	C
	G	L1	L1	A	L2	L2
	Y	G	G	G	G	G
	BK	L2	L2	L2	*	*
Ringer Lead	R	K	K	K	K	K
	S-R	*	*	*	*	L1
	S	*	*	*	L1	*
	BK	L1	G	G	G	G
Line Switch	Y	A	A	A	L2	L2
	W	F	F	C	B	B
	BR	C	C	F	F	F

* Insulated and stored.

† For access to set wiring, follow applicable steps in Part 4.

TABLE D
MODIFICATIONS FOR 1A1 OR 1A2 KTS
(910A OR 2910A TELEPHONE SET)*

LEAD	COLOR	NET. TERM.	
		REMOVE FROM	CONNECT TO
Line Switch	S	A	L2
	Y	A	L2
	BR	C	G
	G	L1	A
	W	F	C
623P4 Mtg Cord Jack Assy	G	L1	F
Ringer	BK	L1	F

*For access to set wiring, follow applicable steps in Part 4.

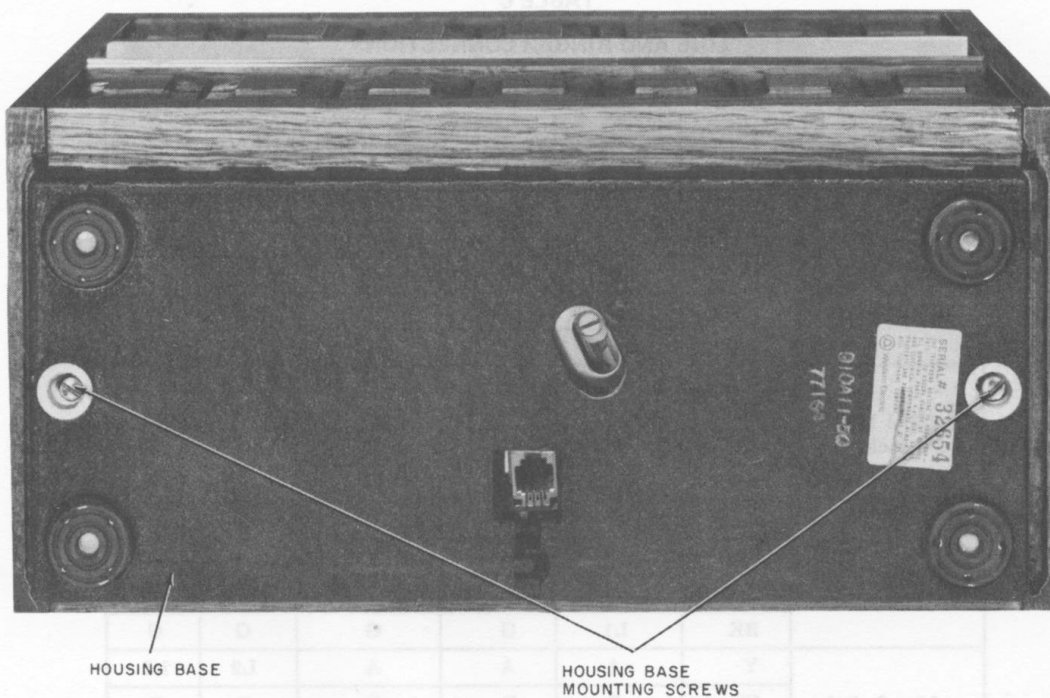


Fig. 4—Removing Metal Housing Base (910A or 2910A Telephone Set)

TABLE E
POLARITY GUARD CONNECTIONS
FOR 2910A TELEPHONE SET

LEAD	COLOR	DISCONNECT FROM	CONNECT TO	
		NET	NET	POLARITY GUARD
Dial	BK	RR		T
Line Switch	BR ①	C		S
	W ②			
623P4 Mtg Cord Jack Assy	R ③			
Polarity Guard	G W		RR C	

① If wired for bridged service or ring party.

② If wired for tip party with no identification ground, 1A1 KTS, or 1A2 KTS.

③ If wired for tip party with identification ground.

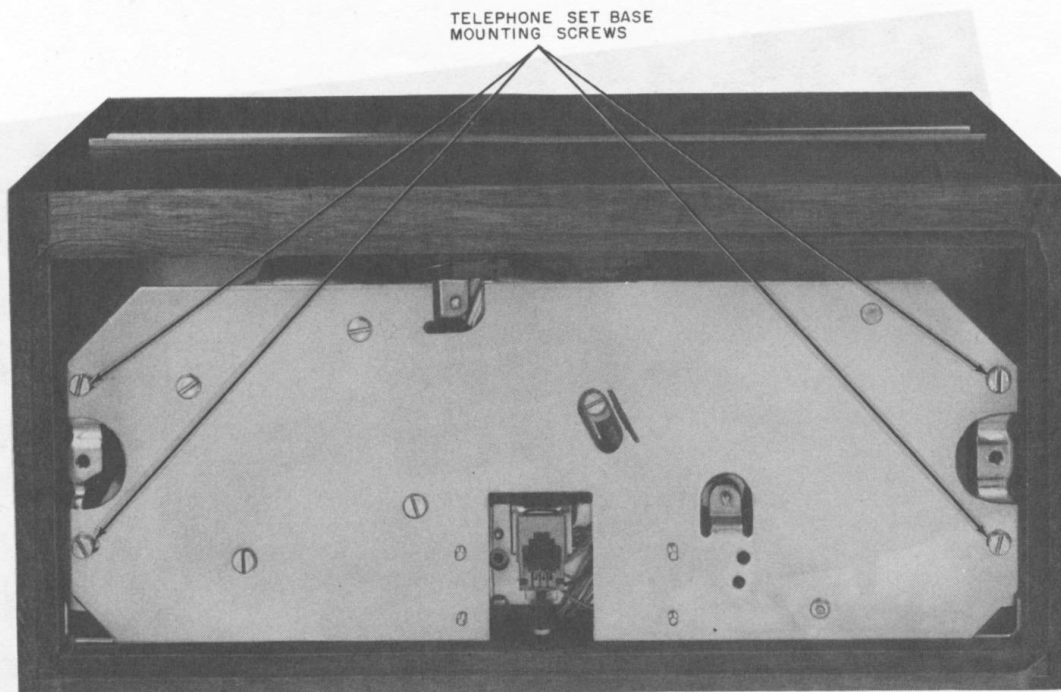


Fig. 5—♦Removing Telephone Set Base (910A or 2910A Telephone Set)♦



Fig. 6—2910A Telephone Set with Telephone Set Base Removed

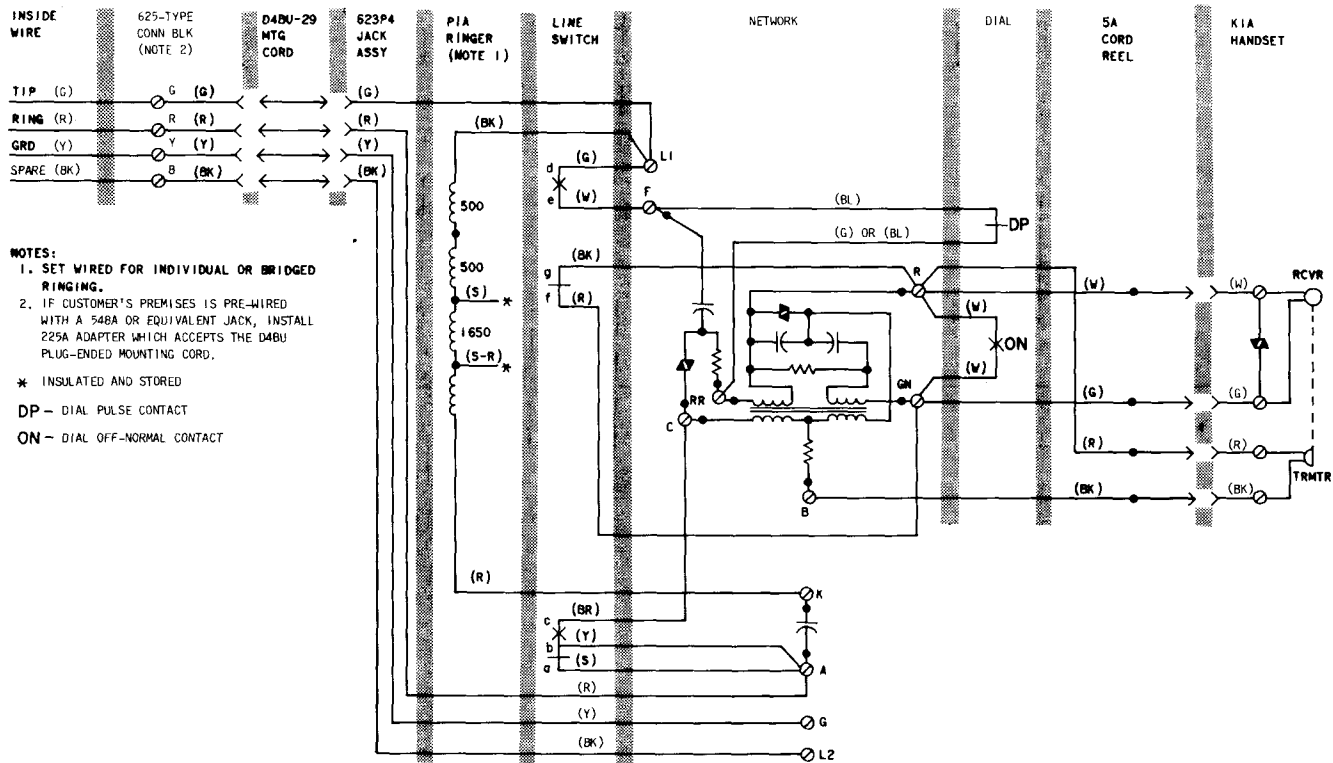


Fig. 7—910A Telephone Set, Connections

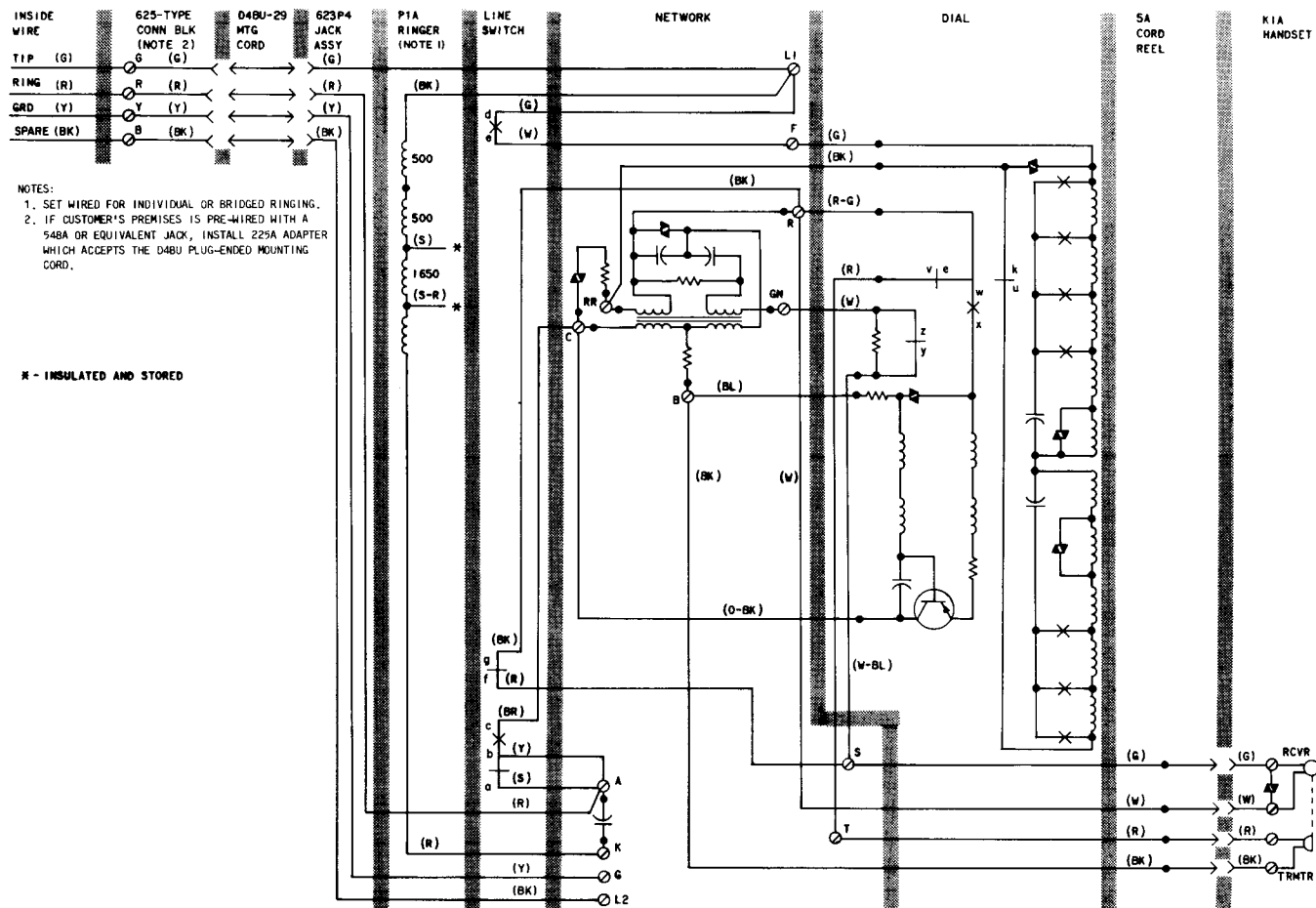


Fig. 8—2910A Telephone Set, Connections

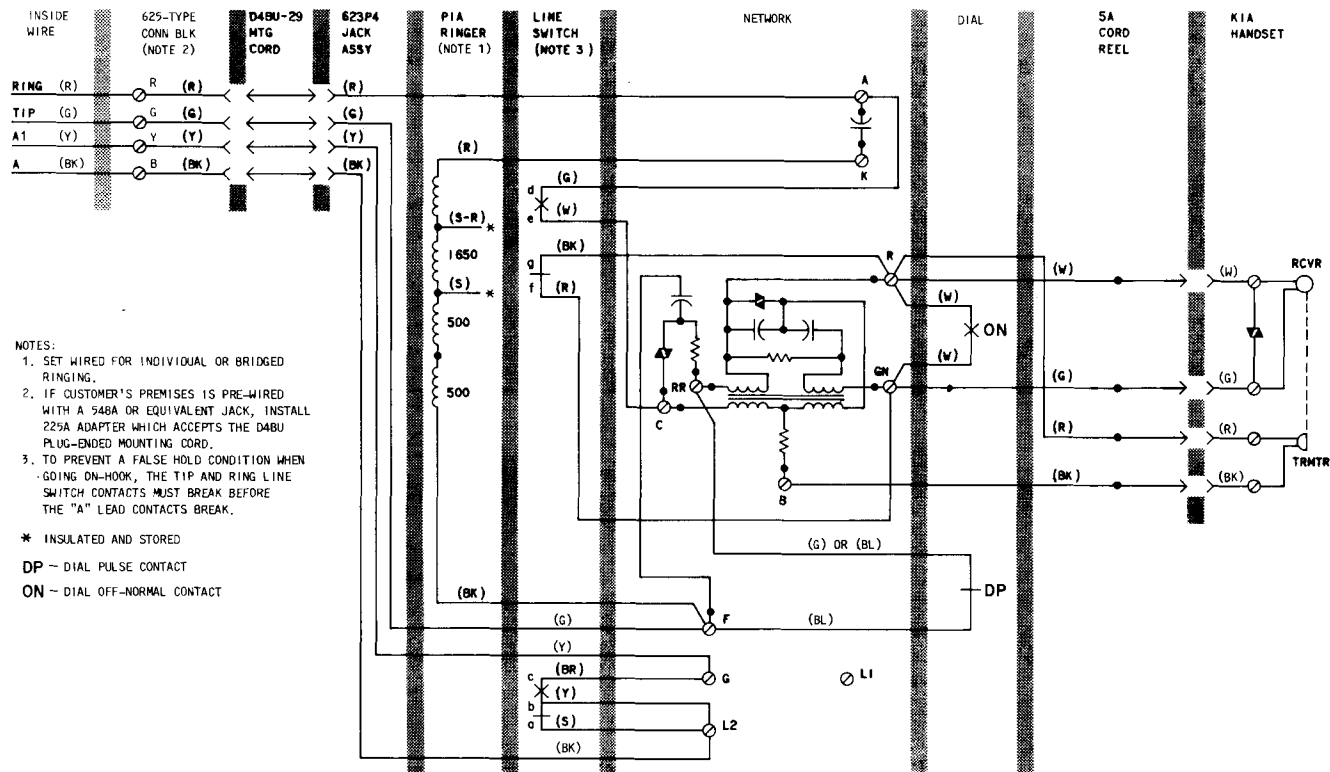


Fig. 9—910A Telephone Set Wired for 1A1 or 1A2 KTS

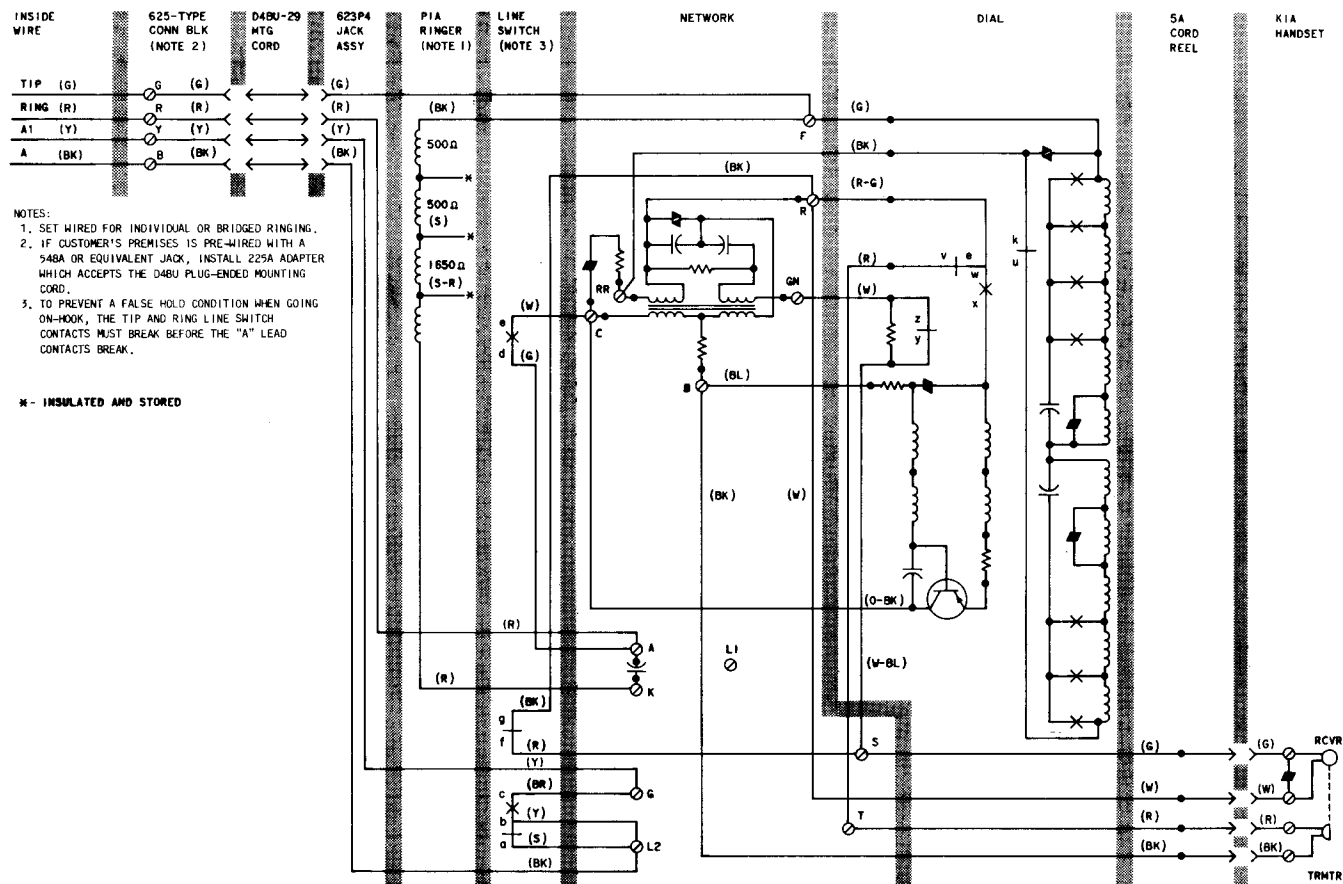


Fig. 10—2910A Telephone Set Wired for 1A1 or 1A2 KTS4