

BURIED WIRE  
D AND E BURIED WIRE TERMINALS

CONTENTS	PAGE
1. GENERAL . . . . .	1
2. D BURIED WIRE TERMINAL . . . . .	1
3. E BURIED WIRE TERMINAL . . . . .	5

1. GENERAL

- 1.01 The D and E Buried Wire Terminals are used to terminate, splice and load buried wire. This section includes a description of these terminals, and the methods used to install them.
- 1.02 This section is reissued to cover minor modifications to the D and E Buried Wire Terminal. The covers are fastened by a captive bolt arrangement to eliminate lost bolts or nuts and the decals have been deleted from the closure. These decals must be ordered separately.
- 1.03 The D Buried Wire Terminal mounts directly in the ground on its steel post.

The E Buried Wire Terminal has brackets for wall or pole mounting. Both terminals are made from bonderized steel with a dark green baked enamel finish.

1.04 The connecting block which is furnished with both terminals provides air gap lightning protection. The large washers on each binding post are spaced to provide an air gap between themselves and between the heads of the screws mounting the block to the terminal plate. This equalizes any discharge between the conductors and the armor wire or terminal housing at connecting blocks. If the large washers, the binding posts, or the connecting blocks become damaged through a discharge, a new connecting block should be used to replace the entire block containing the damaged part or parts.

2. D BURIED WIRE TERMINAL

- 2.01 The D Buried Wire Terminal is illustrated in Fig. 1.

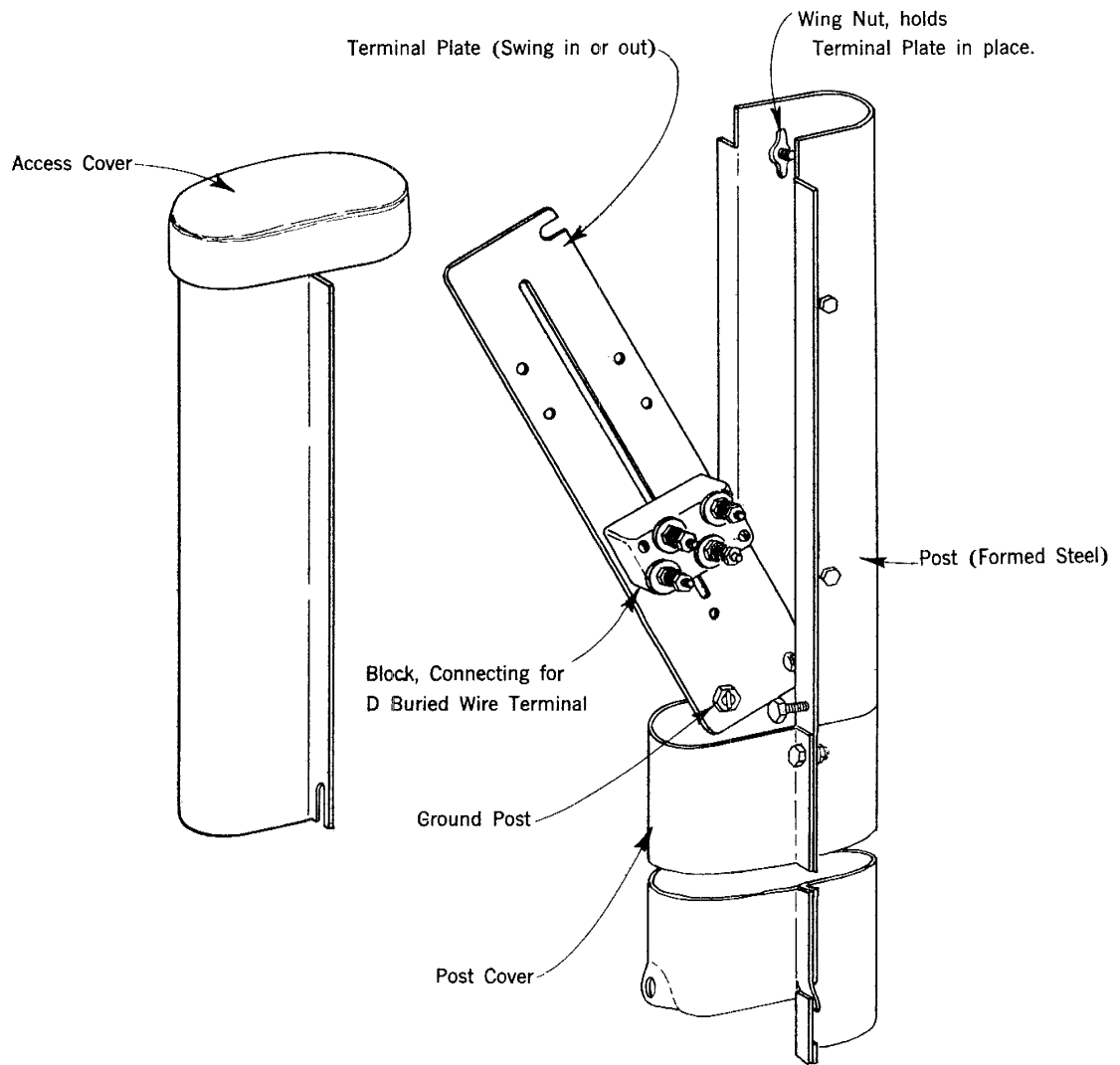


Fig. 1 — D Buried Wire Terminal

- 2.02 The access cover is removed as shown in Fig. 2.

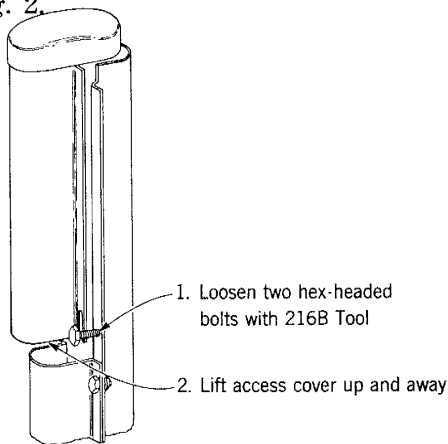


Fig. 2 — Remove Access Cover

- 2.03 *D or E Warning Decals* are to be placed on the cover of the terminal as a protective warning device. The decal should be positioned to provide maximum warning as to the location of the buried plant. *The D Decal has white letters on a green background* and is for use in areas or locations where a decal that blends into the landscape is desirable. *The E Decal has black letters and yellow background* and is intended primarily for use in areas where higher visibility is required. Fig. 3 illustrates the decal design.

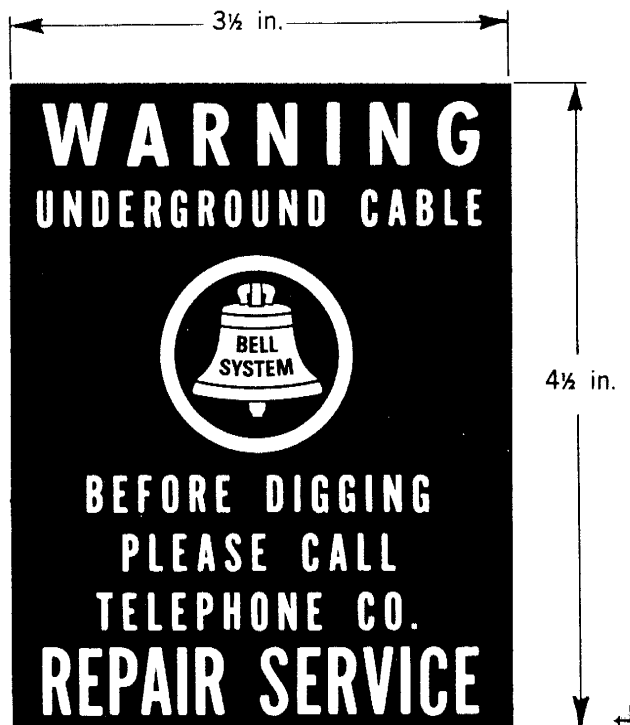


Fig. 3 — Warning Decal

- 2.04 The terminal plate has one two-pair connecting block mounted on it. There is space for mounting a second block. The second block must be ordered separately as a *Block, Connecting, for (D or E) Buried Wire Terminal*. It is mounted by means of the small bolts furnished with it. There is also space for mounting two 179 Type Coil Cases. They are located on the terminal plate as shown in Fig. 4.

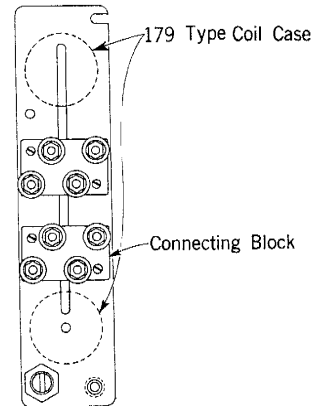


Fig. 4 — Mount Equipment on Terminal Plate

- 2.05 The post cover can be removed after the access cover has been removed as shown in Fig. 5.

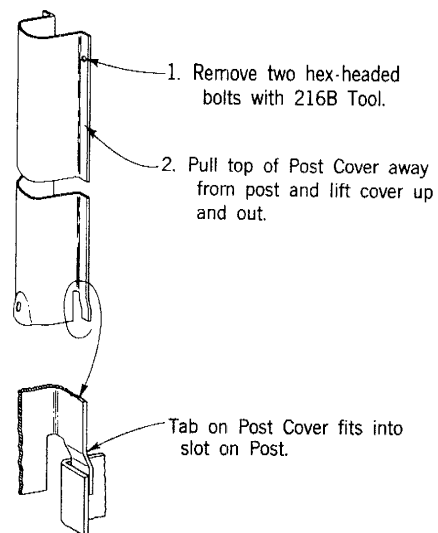
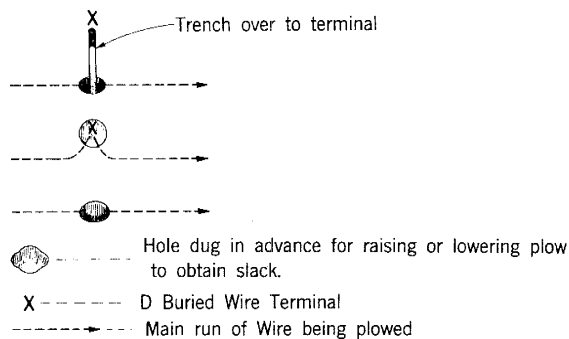


Fig. 5 — Remove Post Cover

**2.06** Install the terminal post in the following manner:

- (a) Remove the access cover and post cover from the terminal before placing.
- (b) Where possible, place the terminals in advance of the wire plowing operation. This provides the workman with an exact reference point for measuring the proper amount of slack to be left at each location. Fig. 6 indicates some methods for accomplishing this.

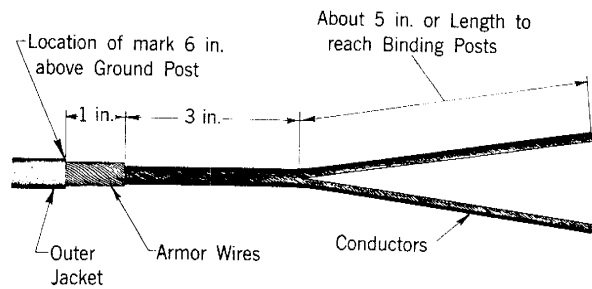


**Fig. 6 — Measure Amount of Slack at Terminal**

- (c) Drive the terminal post into the ground until approximately 36 inches remains above the estimated finished grade. Use a post driver when available. If a post driver is not used, place a block of wood over the end of the post to protect it from damage by the hammer blows.
- (d) Replace the post cover and the access cover to keep them from being misplaced.
- (e) When the buried wire is plowed in, stop at terminal location. Pull enough slack over to the terminal to permit wiring it. Tie the slack to the terminal post.

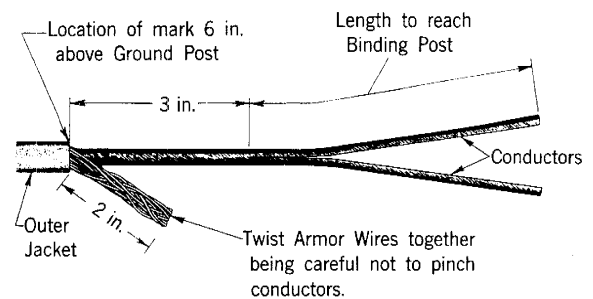
**2.07** The D Buried Wire Terminal should be wired as shown below.

- (a) Remove the access cover and post cover and place incoming wires in the post. Replace the post cover.
- (b) Pull the slack from the first two D Underground Wires and mark the outer jacket about 6 inches above the ground post. Prepare the ends of the wires as illustrated in Fig. 7.



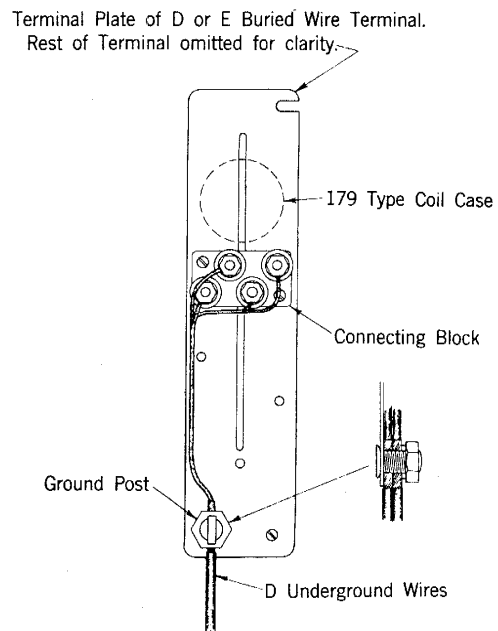
**Fig. 7 — Prepare Ends of First Two Wires**

- (c) Where there are more than two underground wires, pull the slack from them and mark the outer jacket about 6 inches above the ground post. Prepare the ends of the third and fourth wires as shown in Fig. 8.



**Fig. 8 — Prepare Ends for More than Two Wires**

- (d) Connect the conductors to the proper binding posts of the connecting blocks as shown in Figs. 9 and 10.



**Fig. 9 — Wiring with One Connecting Block**

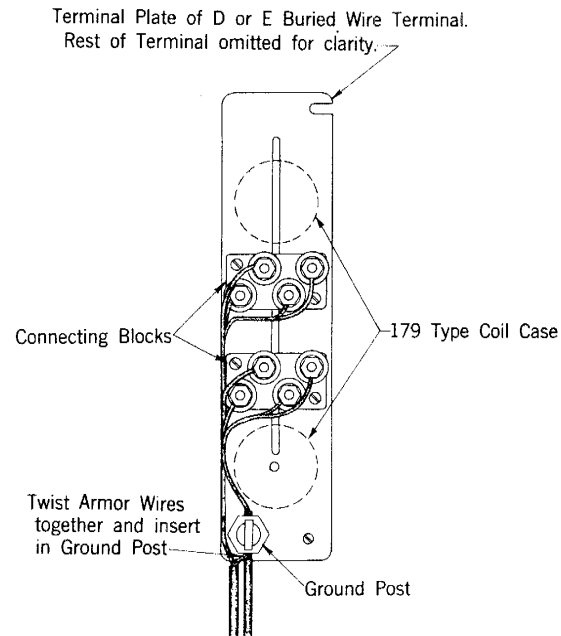


Fig. 10 — Wiring with Two Connecting Blocks

### 3. E BURIED WIRE TERMINAL

**3.01** The E Buried Wire Terminal is illustrated in Fig. 11.

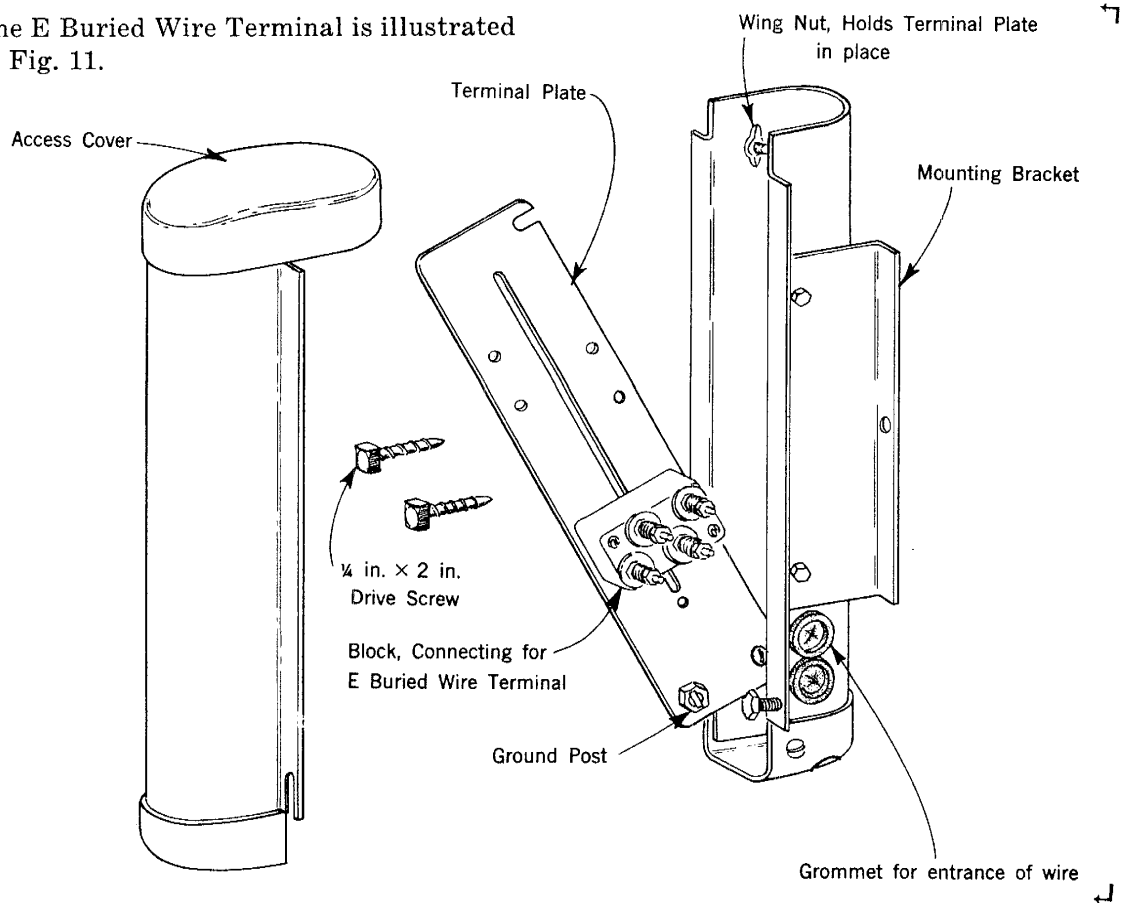


Fig. 11 — E Buried Wire Terminal

## **SECTION 629-720-215**

**3.02** The access cover is removed in the same way as shown for the D Buried Wire Terminal in Paragraph 2.02 and Fig. 2.

**3.03** The terminal plate is the same as that in the D Buried Wire Terminal and has the same capacity for mounting connecting blocks or coil cases as in Paragraph 2.04.

**3.04** Where the buried wire running up to an

E Buried Wire Terminal is exposed to mechanical damage, place it in an S Wire Guard held in place with No. 9 Cable Clamps. Where more protection is required, use a No. O — U Cable Guard.

**3.05** The internal wiring within an E Buried Wire Terminal is similar to that for the D Buried Wire Terminal shown in Paragraph 2.07 (b) through (d).