

DROPS **19, 35 AND 56 TYPES** **REQUIREMENTS** **(CONDENSED SECTION FOR 032-340-701)**

1. REQUIREMENTS (ALSO SEE SECTION 020-012-711)

- 1.01 **Armature Movement:**
 - (a) Move freely on its bearings.
 - (b) Side play measured in line with axis of pivots — Max. .005".
- 1.02 **Shutter Movement**
Move freely on its bearing pin.
- 1.03 **Tripping Latch Position**
 - (a) No obstruction interfering with free movement of tripping latch.
 - (b) Not touch sides of slot in shutter and mounting plate with armature and shutter side play taken up in opposite directions.
- 1.04 **Night Bell Spring Clearance—Fig. 1(A)**
Clearance between night bell spring and contact wire with shutter held by tripping latch—.005".
- 1.05 **Shutter Clearance—Fig. 1(B)**
 - (a) Clearance between closest point on top edge of shutter and shutter hinge plate with shutter held by tripping latch—.015". Use the No. 66D gauge.
 - (b) **Drops Equipped With Protruding Night Bell Spring Mounting Screws Only**—Clearance between closest point of top edge of shutter and shutter hinge plate with shutter held against night bell spring mounting screw—.005".

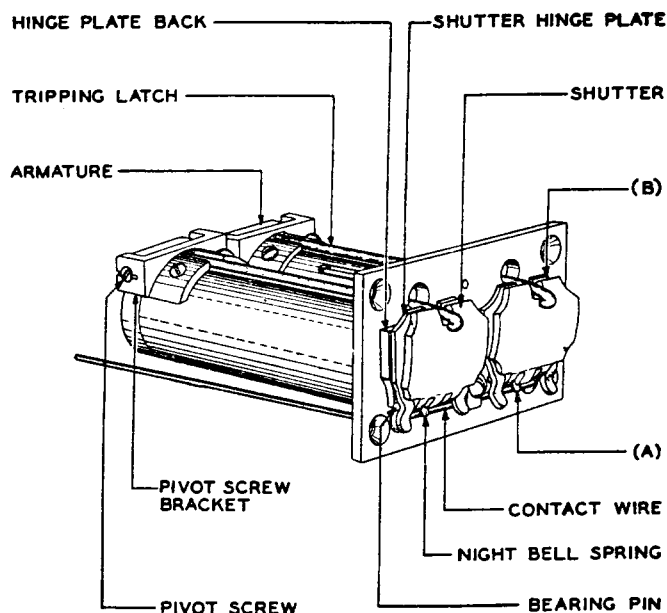


Fig. 1