

## 4-TYPE SIGNALS REQUIREMENTS (CONDENSED SECTION FOR 032-550-701)

### 1. REQUIREMENTS (Also See Section 020-012-711)

- 1.01 *Armature Movement:* Max. .005" side play but shall move freely in bearings.
- 1.02 *Visibility of Shutter:* In operated position shutter shall cover opening in faceplate. In unoperated position shutter shall not show.
- 1.03 *Clearance Between Shutter and Soldering Terminals* — Fig. 1(A): Approx. 1/16" clearance between shutter and soldering terminals, with signal operated.

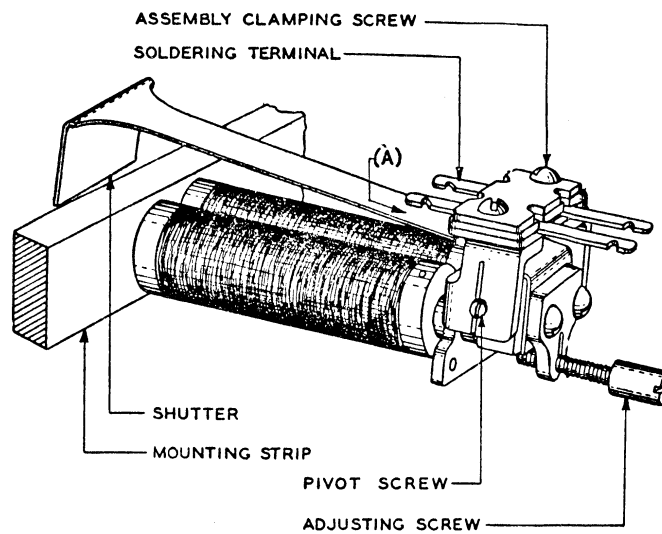


Fig. 1 — 4-Type Signal