

BOOTHS-UNIVERSAL
(INDOOR-OUTDOOR) KS-16797
IDENTIFICATION

1. GENERAL

1.001 This addendum supplements Section 508-230-100, Issue 3.

1.002 This addendum is issued to change the part number of the double-pole single throw circuit breaker which is installed in the junction box.

6. JUNCTION BOX (Fig. 4)

The following supplemental information applies to Part 6 of the section:

(a) 6.02—revised

6.02 A double-pole single throw circuit breaker may be installed in the junction box if required. The circuit breaker must be ordered separately from Heinemann Electric Co., *No. 2912, 10 amp, 120 volts ac, Curve 3.*

WALK-UP, DRIVE-UP PUBLIC TELEPHONES

KS-19426 MOUNTING

IDENTIFICATION

1. GENERAL

1.01 This section describes the KS-19426 mounting which is used for walk-up, drive-up coin telephone service.

1.02 This section is reissued to:

- Revise and add illustrations
- Revise and expand text

1.03 Due to extensive changes, marginal arrows have been omitted.

2. IDENTIFICATION

2.01 The KS-19426 mounting consists of a 90-degree wedge-shaped housing for post or wall mounting of coin telephones. See Fig. 1 through 4.

2.02 Post mountings (Fig. 1 and 2) may be installed singly or in multiple combinations as shown in Fig. 5.

2.03 Wall mountings (Fig. 3 and 4) may be installed on a flat wall, in a corner, or around a corner in various multiple combinations as shown in Fig. 6.

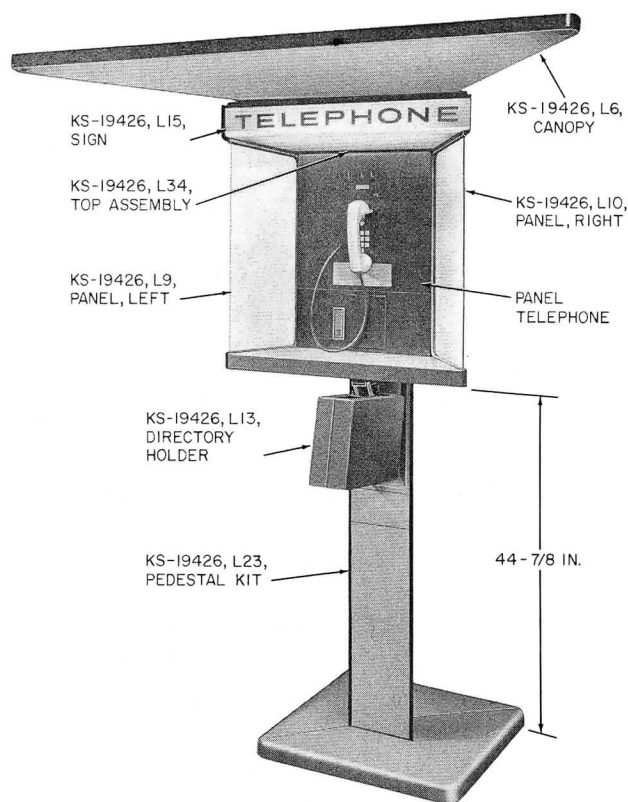


Fig. 1 — KS-19426 Mounting for Walk-up Outdoor Service

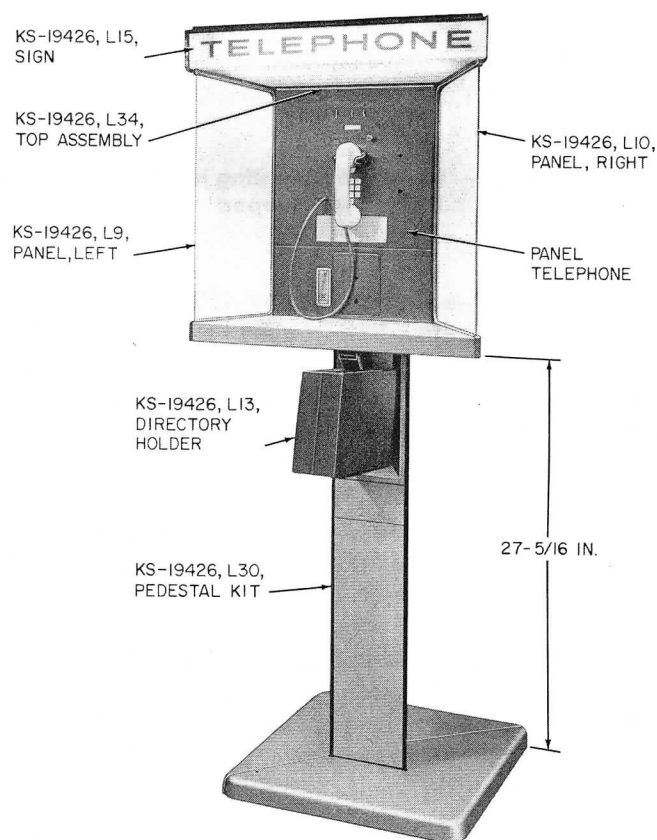


Fig. 2 — KS-19426 Mounting for Drive-up Service

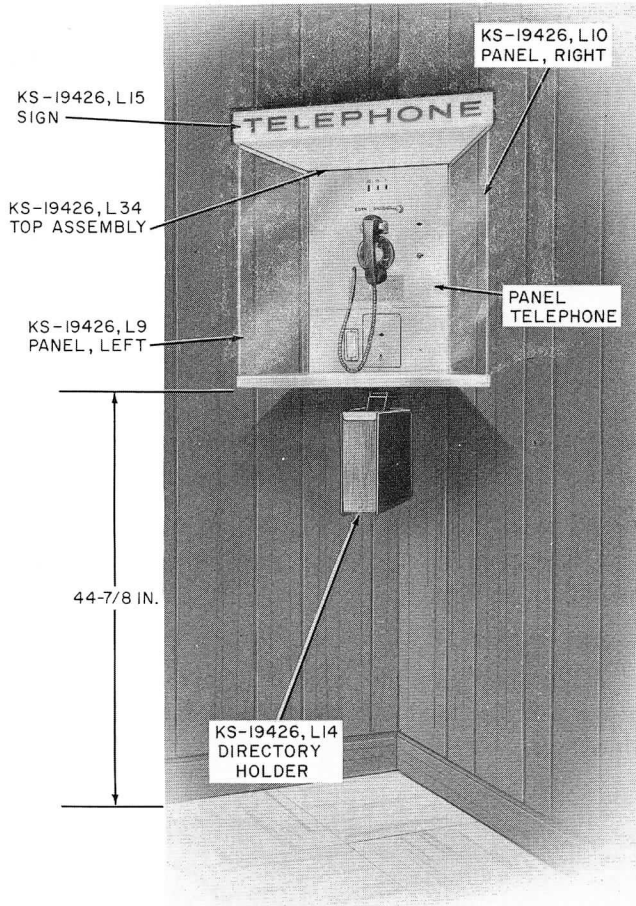


Fig. 3 — KS-19426 Mounting in Corner Using List 4 Support

2.04 A wedge-shaped canopy (Fig. 1) is available for installation above a single housing to protect the user from the weather. Canopies may also be used in multiple arrangements.

2.05 The approximate overall dimensions of the mounting are 30 inches high by 30 inches wide across the front edge of the writing shelf. The depth from the apex to the front edge of the shelf is approximately 15 inches.

2.06 The basic housing (Fig. 7) consists of a top section containing a light fixture, side cut-outs for replaceable panels, an integral back-board for mounting coin telephones, and a stainless steel writing shelf.

2.07 The rear of the housing is provided with holes for attaching to post or to supports required for various wall applications.

2.08 The illuminated sign has a white translucent panel with the word **TELEPHONE** printed in blue letters. The sign illuminates the coin telephone, the writing shelf, and the surrounding area.

2.09 Two directory holders are available for attachment beneath the basic housing.

(a) List 13 directory holder (Fig. 1 and 2) for outdoor use.

(b) List 14 directory holder (Fig. 3 and 4) for indoor use.

2.10 The housing side panels are available in two widths; 8-1/16 inches and 17-9/16 inches. These panels extend outward on each side to provide privacy. Acoustic material panels and clear tempered glass panels are available.

2.11 A black angular steel post, with an aluminum cover on the flat front face (Fig. 8), is available for drive-up or walk-up service. This

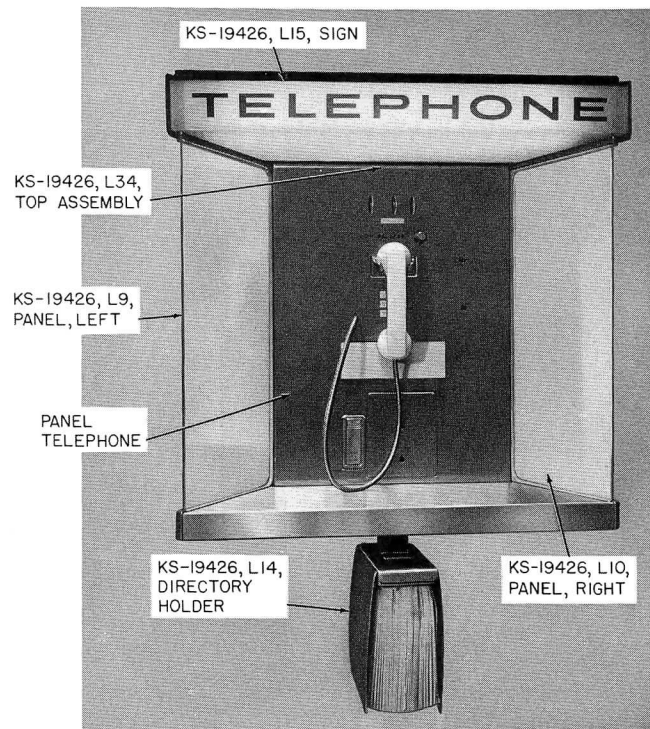
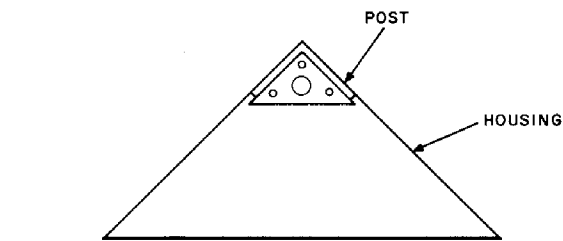
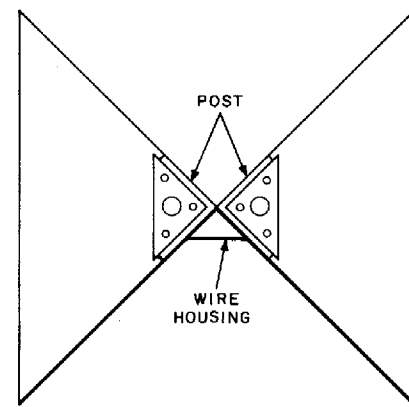


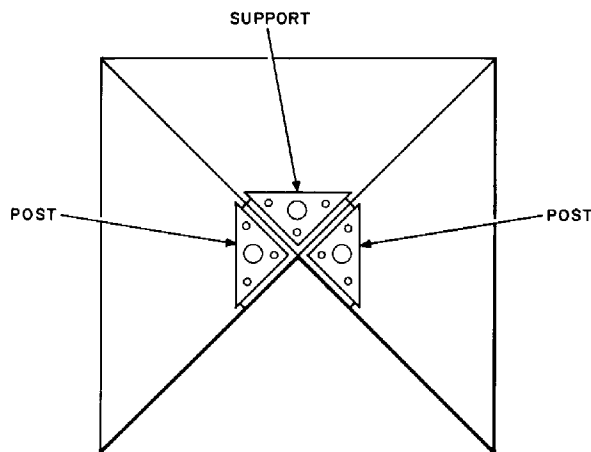
Fig. 4 — KS-19426 Mounting on Flat Surface, Using List 5 Support



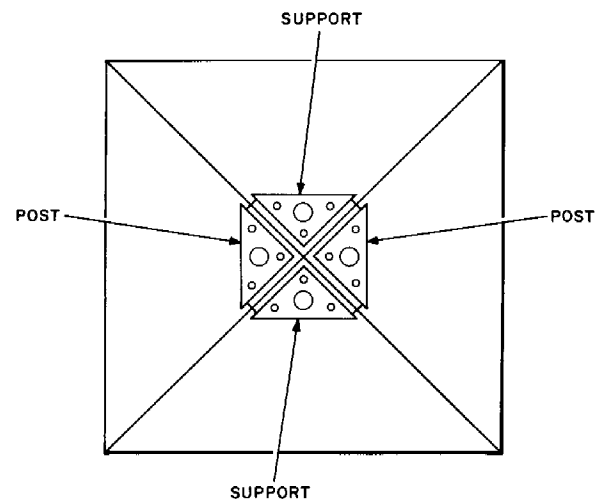
VIEW A
SINGLE MOUNTING



VIEW B
TWO MOUNTINGS



VIEW C
THREE MOUNTINGS



VIEW D
FOUR MOUNTINGS

Fig. 5 — Various Arrangements for Post Mountings

post may be mounted on a pedestal as shown in Fig. 8 or embedded in concrete.

2.12 List numbers and parts available for the KS-19426 mounting are described in Table A.

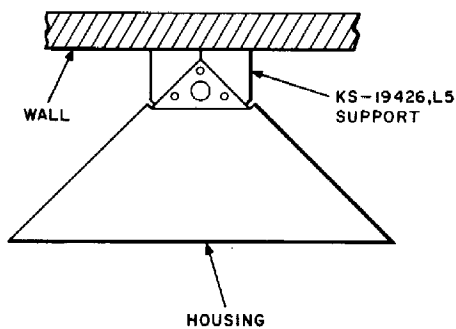
3. TELEPHONE SETS

3.01 The KS-19426 mounting is designed for panel-type coin telephone sets. These sets fill the space between the sign and shelf.

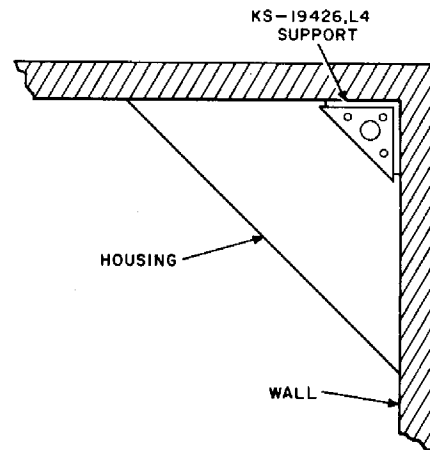


List 34 top assembly must be installed with a panel-type coin telephone.

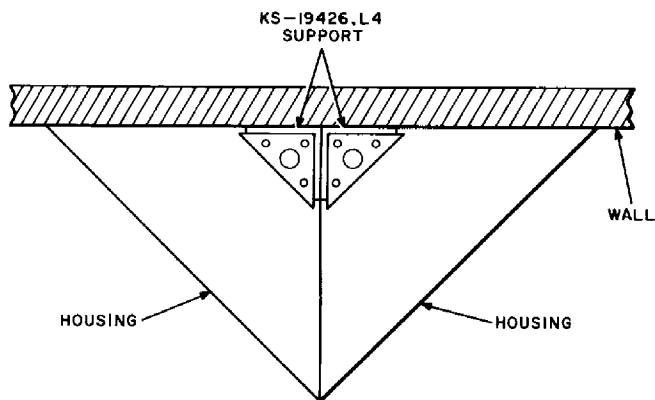
3.02 The 200-type coin collector, plus 685-type subscriber set, may also be used with KS-19426 mounting but requires a List 8 installation kit. This kit consists of mounting screws, 685-type subscriber set adapter, left and right side shrouds, bottom plate, and subscriber set cover plate. See Fig. 9.



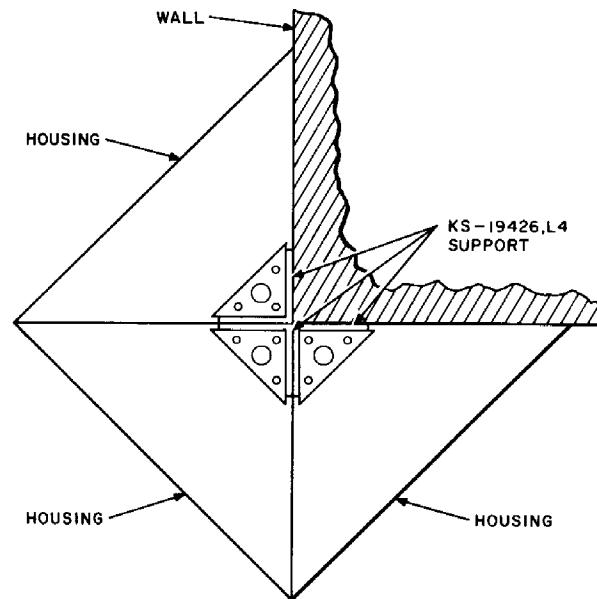
VIEW A
SINGLE MOUNTING
FLAT SURFACE



VIEW B
SINGLE MOUNTING, CORNER



VIEW C
TWO WALL MOUNTINGS
AT RIGHT ANGLES



VIEW D
THREE MOUNTINGS
AROUND CORNER

Fig. 6 — Various Arrangements for Wall Mountings

3.03 The 1A-type coin telephone set may be used with KS-19426 mounting but requires a List 7 installation kit. This kit consists of mounting screws, left and right side shrouds, and associated brackets. See Fig. 10.

4. WIRING

4.01 Electric power and telephone line entrance is either at the top or the bottom of a post. Wall mountings may have entrance from behind a housing.

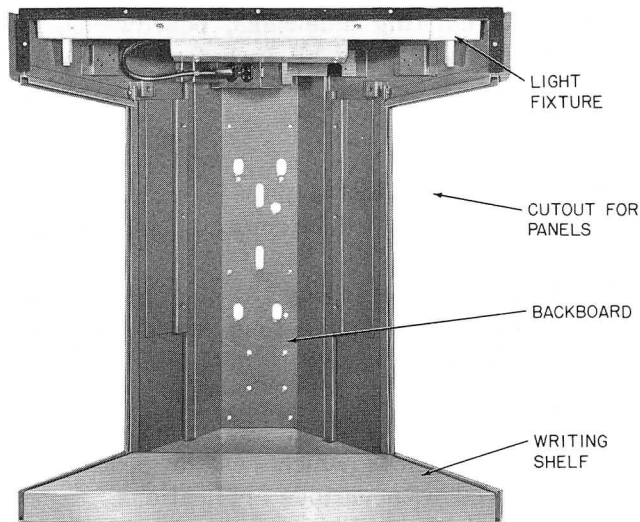


Fig. 7 — KS-19426, List 1 Housing

4.02 Connections to the power outlet box and telephone protector are in the cavity behind the telephone sign. Removal of the front sign allows access to connections.

4.03 The housing is prewired from the power receptacle to a terminal strip located in a junction box on the housing under the writing shelf.

4.04 A mast, prewired with telephone and power wire and equipped with service heads, is available for overhead entrance.

4.05 A circuit breaker for switching power on and off can be mounted in the junction box located in the lower section of the post when housings are post-mounted. Access is through a small door in the post cover.

4.06 A List 16 wire housing (Fig. 11) provides a channel through which interconnecting wires are to be run when mountings are installed back-to-back on posts.

4.07 A KS-19261, List 3 light control may be used to switch the light on at darkness and off at daylight. A bracket for mounting the relay box is welded onto the upper portion of the housing on the right-hand side. The wire channel for the light cell cord is attached to this side and permits the cell, or sensing element, to be located in a metal box below the shelf in a protected location.

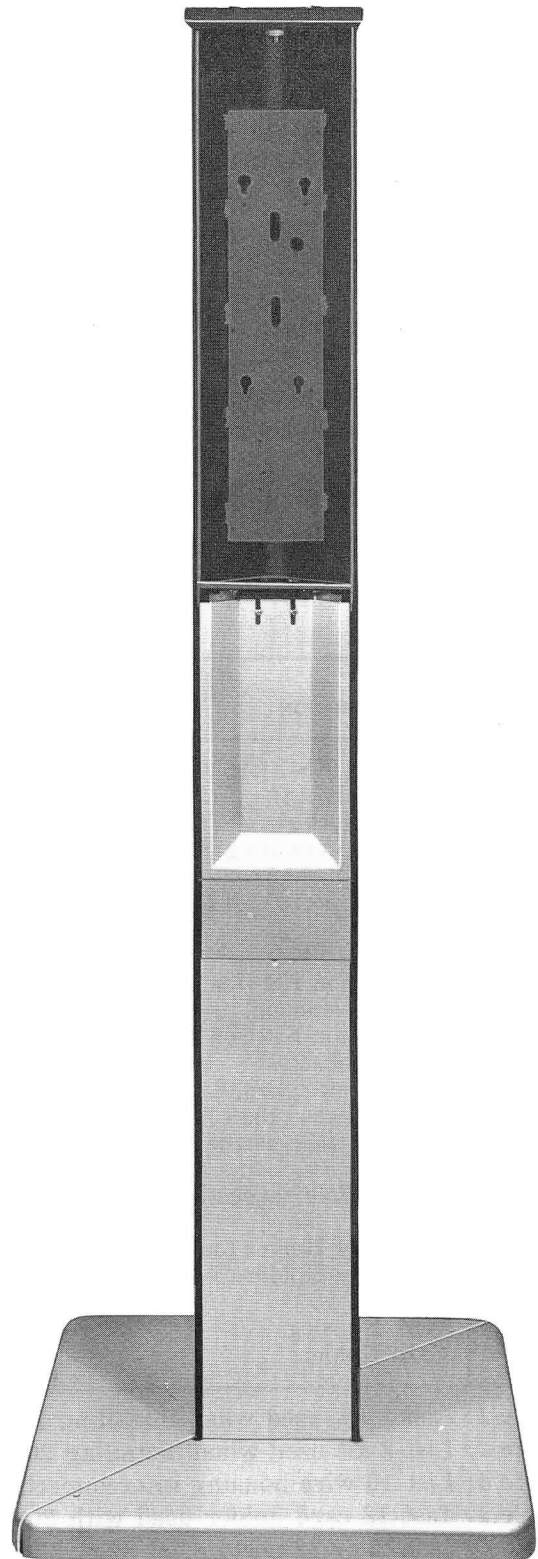


Fig. 8 — Post Mounted on Pedestal

When the ambient light level reaches approximately three foot-candles, the lamp is switched on. When a level of ten foot-candles occurs, the lamp is turned off. The position under the shelf plus a time delay relay reduces the chance that extraneous car headlights, could cause the switch to function intermittently.

5. ORDERING INFORMATION

5.01 Post-Mounted Housings

- (a) Pedestal kits (List 23, 29, 30, or 31) must be ordered when mountings are to be in-

stalled on existing sidewalks, boardwalks, or similar surfaces. The kit includes the post or posts, base, covers, and necessary hardware. See Fig. 12.

- (b) A List 2 or List 3 post is also available when the post is to be embedded in concrete.

- (c) A List 4 support (Fig. 13) must be used for post-mounted applications when housings are installed in multiples of three and four. See Fig. 5.

- (d) Table B shows which post or pedestal is required with various applications.

TABLE A
KS-19426 — SUMMARY OF LIST NUMBERS

LIST NUMBER	DESCRIPTION	SEE NOTE	LIST NUMBER	DESCRIPTION	SEE NOTE
1	Housing, KS-19426		19	Emblem	
2	Post (walk-up)		20	Panel, Left (glass, 17-9/16 inch)	
3	Post (drive-up)		21	Panel, Right (glass, 17-9/16 inch)	
4	Support (mounting-corner or right angle)		22	Post (pedestal, walk-up)	5
5	Wall Support (wall mounting-flat)		23	Pedestal Kit (walk-up, single)	6
6	Canopy		24	Multiplying Strip, Left	7
7	Installation Kit (for 1A-type coin telephone)	1	25	Multiplying Strip, Right	7
8	Installation Kit (for 200-type coin collector)	2	26	Panel, Left (acoustic, 17-9/16 inch)	
9	Panel, Left (glass, 8-1/16 inch)		27	Panel, Right (acoustic, 17-9/16 inch)	
10	Panel, Right (glass, 8-1/16 inch)		28	Post (pedestal, drive-up)	5
11	Panel, Left (acoustic, 8-1/16 inch)		29	Pedestal Kit (walk-up, back-to-back)	6
12	Panel, Right (acoustic, 8-1/16 inch)		30	Pedestal Kit (drive-up, single)	6
13	Directory Holder (outdoor)		31	Pedestal Kit (drive-up, back-to-back)	6
14	Directory Holder (indoor)		32	Cover (no cutout)	5
15	Sign		33	Cover (with cutout)	5
16	Wire Housing		34	Top Assembly	8
18	Card Holder		39	Mast (for Canopy)	
			40	Mast (for Post Assembly)	

Note 1: List 7 kit used when installing 1A-type coin telephone.

Note 2: List 8 kit used when installing 200-type coin collector.

Note 3: List 16 wire housing interconnects back-to-back housings.

Note 4: List 18 card holder used with 200-type coin collector, when required.

Note 5: List 22 or 28 post or list 32 or 33 cover may be ordered when pedestal posts or pedestal covers require replacement for any reason.

Note 6: List 23, 29, 30, or 31 pedestal kit (post, base, covers) used for mounting on existing sidewalks, boardwalks, or similar surfaces.

Note 7: Lists 24 and 25 multiplying strips used in place of one glass panel when housings are mounted side-by-side.

Note 8: List 34 must be used with coin panel telephones.

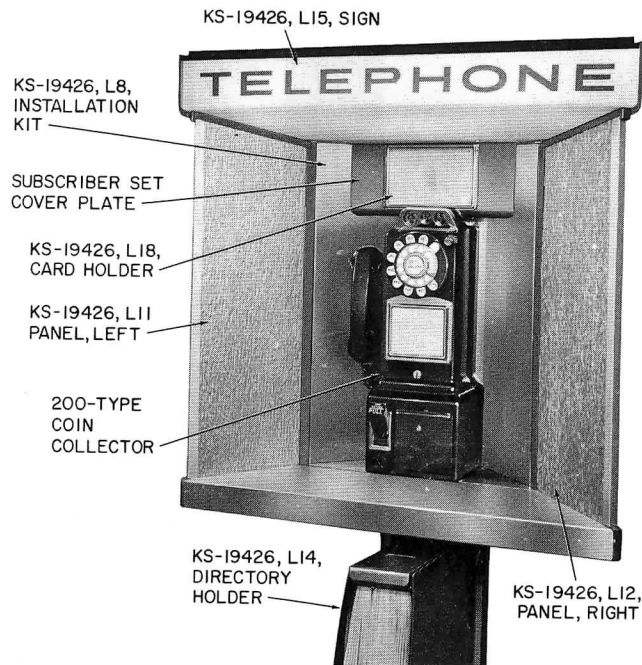


Fig. 9 — KS-19426 Mounting, Using 200-Type Coin Collector

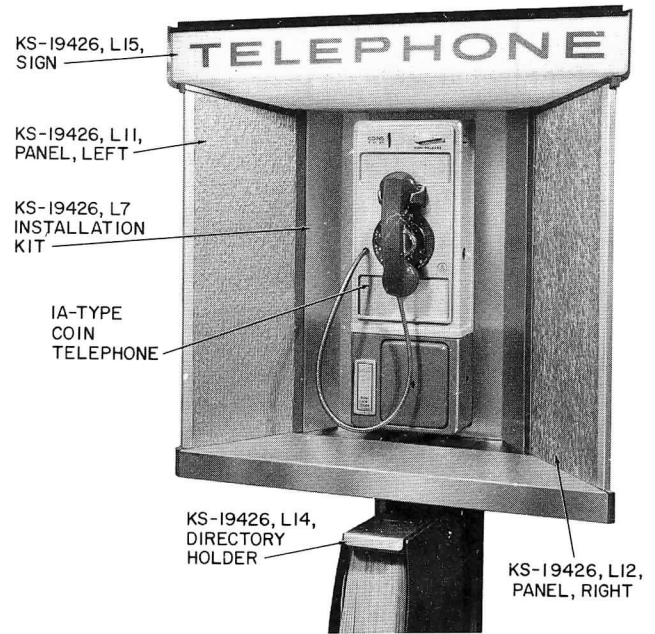


Fig. 10 — KS-19426 Mounting, Using 1A-Type Coin Telephone Set

5.02 Wall-Mounted Housings

- (a) A List 4 support (Fig. 13) is used for mounting a housing in a corner.
- (b) A List 5 support (Fig. 14) is used for mounting a housing on a flat surface.
- (c) One support, either List 4 or List 5, is required for each housing.

5.03 Canopy

- (a) The List 6 canopy (Fig. 1) projects forward approximately 32-1/2 inches from the apex of the housing. The front edge is 64 inches wide.
- (b) Canopies can be installed in multiple arrangements in the same manner as housings. When they are multiplied, adjacent canopies are bolted together.

THINK Do not install canopies on drive-up mountings.

5.04 Panels

- (a) The narrow panels provide enclosures between the telephone sign and writing shelf. For added privacy, wide panels are available which extend 8 inches beyond the shelf.
- (b) Acoustic panels are available when required. Fig. 9 and 10 show acoustic panels.
- (c) Table A describes the type and material of panels available.
- (d) When two housings are mounted side-by-side in multiple installations, a filler multiplying strip (List 24 or List 25) is used in place of one of the panels.

THINK Do not use wide panels on drive-up mountings.

5.05 Emblem: A 4-1/2-inch diameter Bell System symbol, on reflective material, with pressure sensitive adhesive, is available for use on the side of the housing. This material reflects the symbol when automobile headlights or other sources of light shine on the surface.

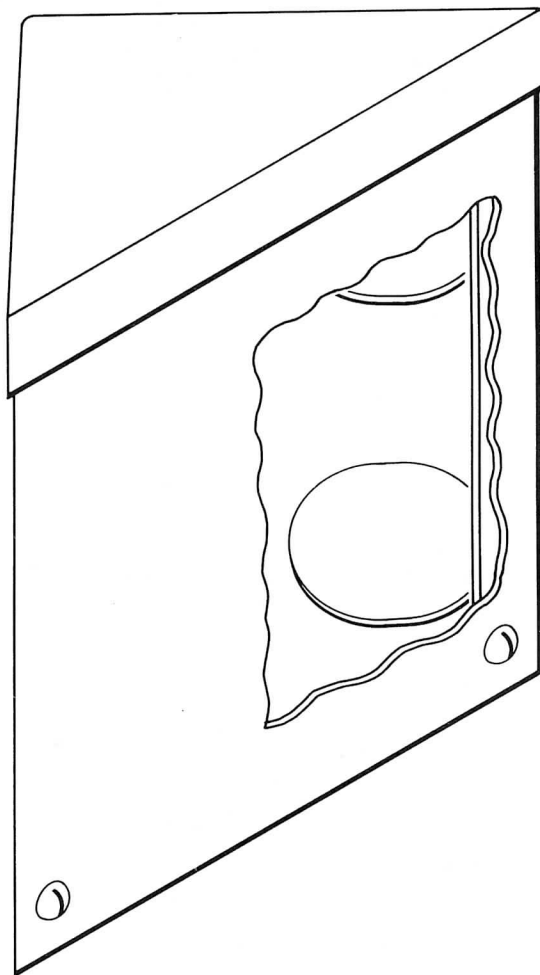
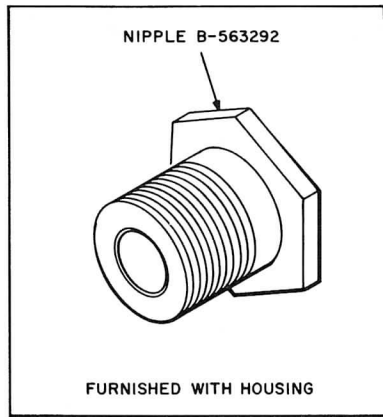


Fig. 11 — KS-19426, List 16 Wire Housing

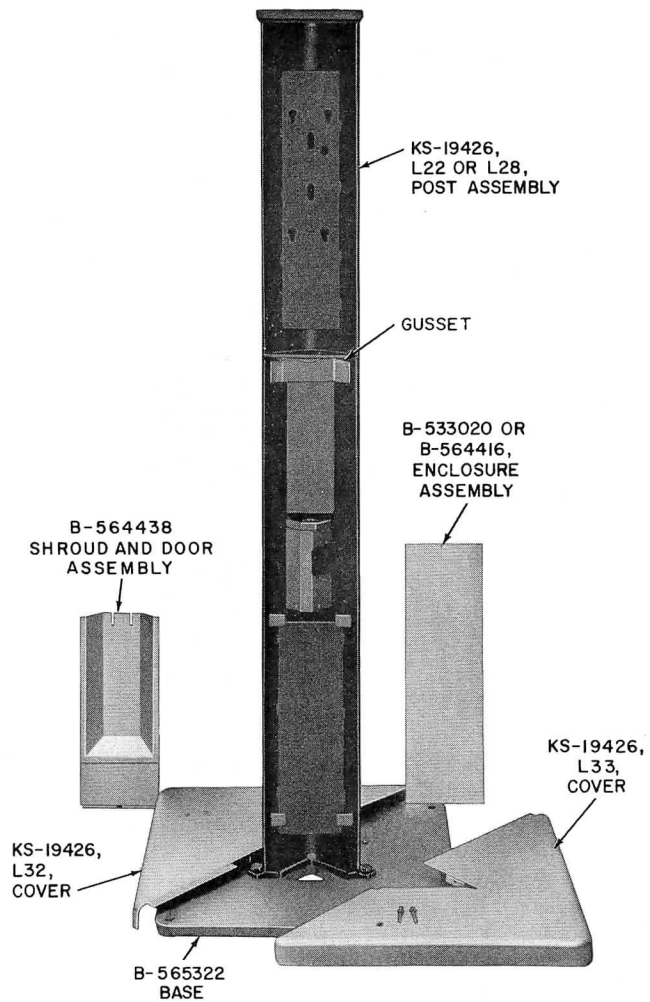


Fig. 12 — Pedestal Kit

5.06 Ordering Examples (See Table A)

(a) For pedestal-mounted, single unit, 1A1 coin telephone, for walk-up outdoor service with a canopy, narrow glass panels, and a mast for overhead power and telephone line:

1 Pedestal Kit, KS-19426, L23

1 Housing, KS-19426, L1

1 Mast, KS-19426, L40

1 Canopy, KS-19426, L6

1 Installation Kit, KS-19426, L7

1 Panel, Left, KS-19426, L9

- 1 Panel, Right, KS-19426, L10
- 1 Directory Holder, KS-19426, L13
- 1 Sign, KS-19426, L15
- 2 Emblems, KS-19426, L19
- (b) For two wall-mounted units at right angles, without canopies, with wide acoustic panels, for use with the 233 coin collector.
- 2 Housings, KS-19426, L1
- 2 Supports, KS-19426, L4
- 2 Installation Kits, KS-19426, L8
- 2 Signs, KS-19426, L15
- 2 Panels, Left, KS-19426, L26
(See note)
- 1 Panel, Right, KS-19426, L27
(See note)
- 1 Multiplying Strip, Right, KS-19426, L25 (See note)
- 2 Directory Holders, KS-19426, L14
(L13 if outside)
- Note:** Two right panels, one left panel, and one KS-19426, List 24 left multiplying strip, may be used.

TABLE B
PEDESTAL AND POST APPLICATIONS

ARRANGEMENT	NUMBER OF HOUSINGS	TYPE OF INSTALLATION	REQUIRED COMPONENTS
Single	1	Walk-up	1 Pedestal Kit, KS-19426, L23 or 1 Post, KS-19426, L2 (embedded)
		Drive-up	1 Pedestal Kit, KS-19426, L30 or 1 Post, KS-19426, L3 (embedded)
Back-to-Back	2	Walk-up	1 Pedestal Kit, KS-19426, L29 or 2 Posts, KS-19426, L2 (embedded) plus 2 Wire Housings, KS-19426, L16
		Drive-up	1 Pedestal Kit, KS-19426, L31 or 2 Posts, KS-19426, L3 (embedded) plus 2 Wire Housings, KS-19426, L16
Cluster of Three	3	Walk-up	1 Pedestal Kit, KS-19426, L29 or 2 Posts, KS-19426, L2 (embedded) plus 1 Support, KS-19426, L4
Cluster of Four	4	Walk-up	1 Pedestal Kit, KS-19426, L29 or 2 Posts, KS-19426, L2 (embedded) plus 2 Supports, KS-19426, L4

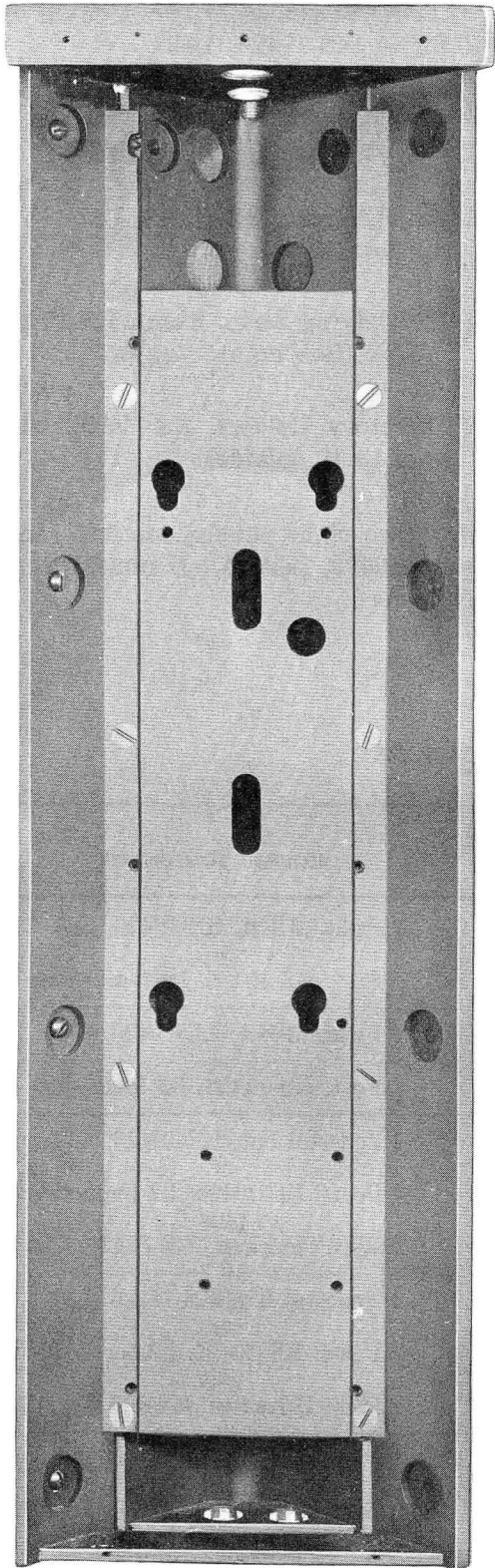


Fig. 13 — KS-19426, List 4 Support

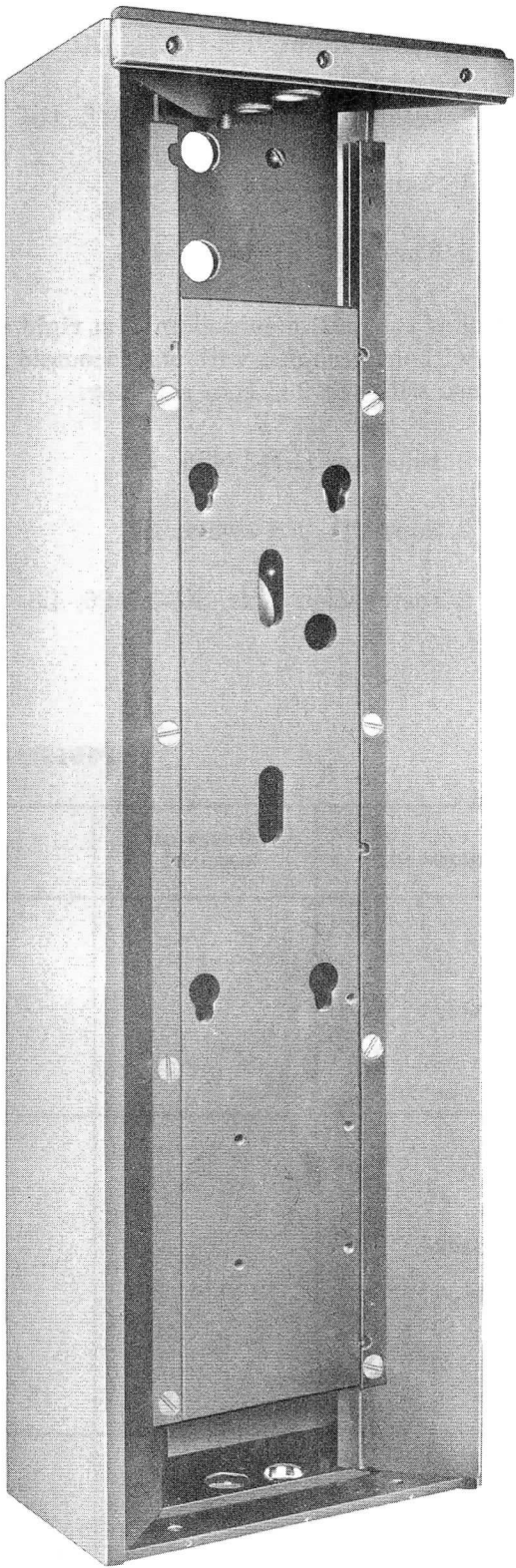


Fig. 14 — KS-19426, List 5 Support

(c) For pedestal-mounted, back-to-back, for drive-up use with panel telephone, narrow glass panels; to be installed on an asphalt surface with underground power and telephone line:

1 Pedestal Kit, KS-19426, L31

2 Housings, KS-19426, L1

2 Panels, Left, KS-19426, L9

2 Panels, Right, KS-19426, L10

1 Wire Housing, KS-19426, L16

2 Directory Holders, KS-19426, L13

2 Signs, KS-19426, L15

4 Emblems, KS-19426, L19

2 Top Assemblies, KS-19426, L34