

STATION DIALS

21-TYPE

IDENTIFICATION AND MAINTENANCE

1. GENERAL

1.01 This section is reissued to add 21C and 21D dials. Since this reissue covers a general revision, arrows ordinarily used to indicate changes have been omitted.

1.02 These dials (Fig. 1, 2, and 3) contain pushbutton operated contacts to activate central office or PBX sender equipment. The sender converts the contact code dialed into 2-out-of-5 digit code or rotary dial pulses.

2. IDENTIFICATION

2.01 Table A lists the 21-type dials and their application and design features.

3. MAINTENANCE

3.01 If open dial contact troubles are encountered (Fig. 4), clean the contacts with KS-19578L1 trichloroethane using a KS-16365 pad.



Contact spring tolerances are critical and no adjustment should be attempted in the field.

3.02 Replace the dial if any parts are broken or disfigured.

4. SCHEMATICS

Fig. 5—21B and C Dials Schematic

Fig. 6—21D Dial Schematic

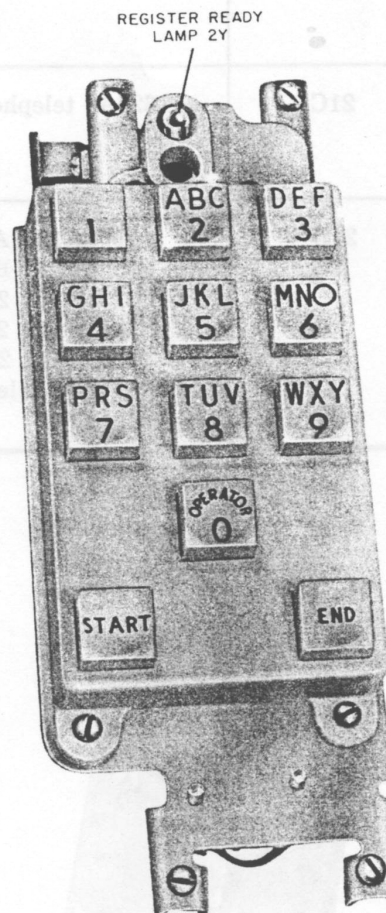


Fig. 1—21B Dial

TABLE A

ORDERING GUIDE	APPLICATION	DESIGN FEATURES
21B	7A1 and 8A1 telephone consoles	Each spring combination consists of two make contacts, except the combination associated with the START button which consists of a set of transfer contacts. Register ready lamp lights when register is ready to receive dialed information.
21C	622A1 telephone set (MD)	Same as 21B except START and END buttons are designated ST1 and ST0, respectively.
21D	1A9, 1A10, 1A11, 1A12, 1B9, 1B10, 1B11, 1B12, 1B15, 2A13, 2A14, 2A15, 2A16, 2A17, 2A18, 2B13, 2B14, 2B15, 2B16, 2B17, and 2B18 telephone consoles	Each spring combination associated with a marked button consists of two make contacts and each combination associated with an unmarked button consists of a set of transfer contacts. Contains three signal lamps, a volume control, and an audible signal switch.

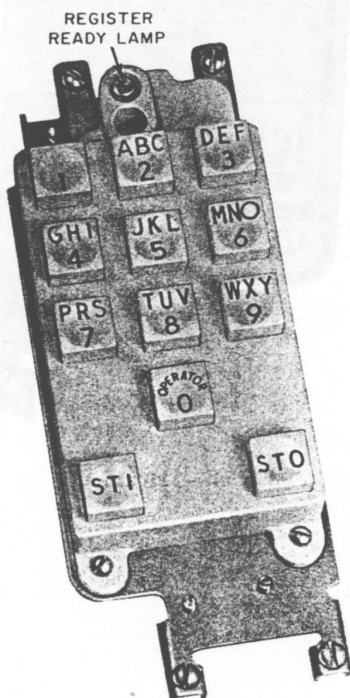


Fig. 2—21C Dial

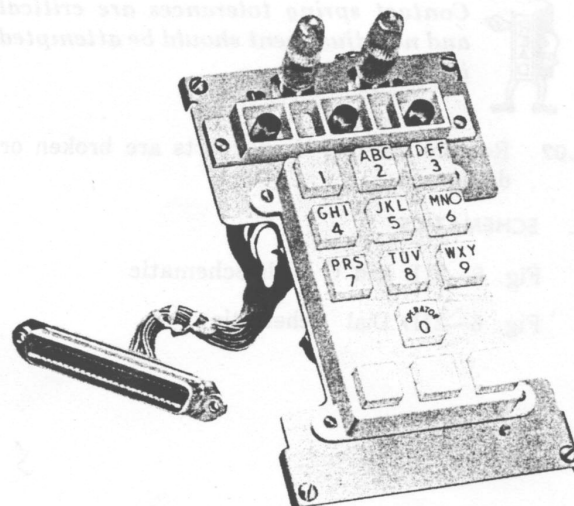


Fig. 3—21D Dial

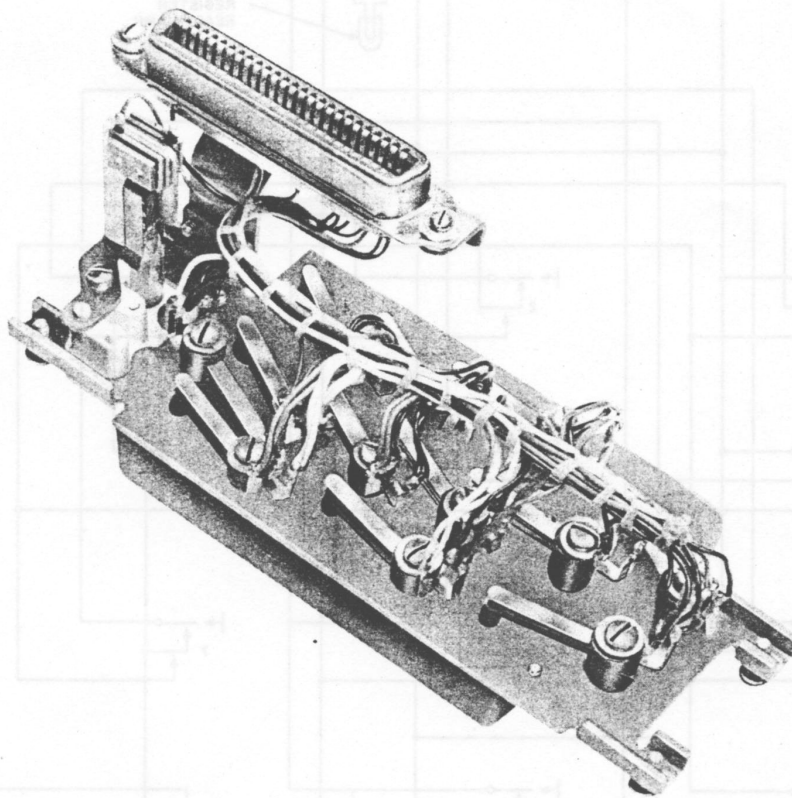


Fig. 4—21B and C Dials, Rear View

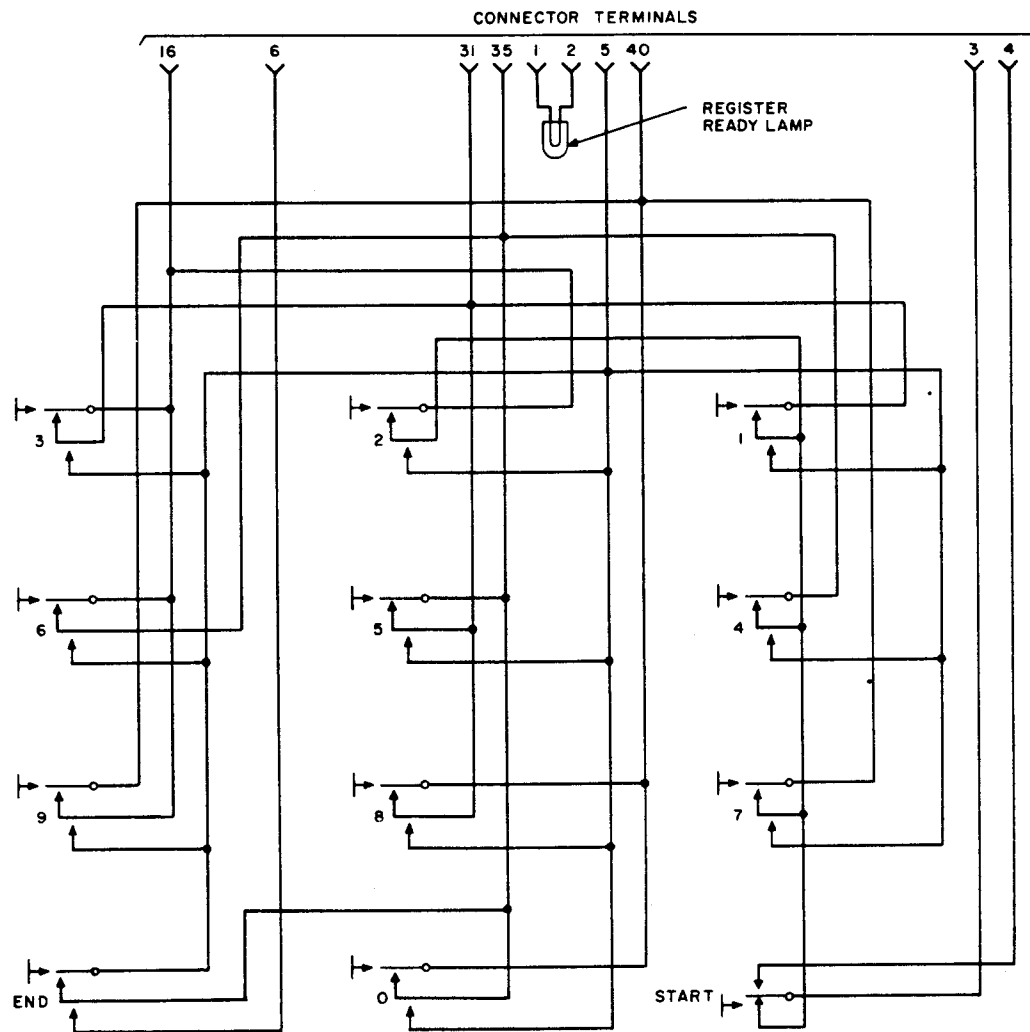


Fig. 5—21B and C Dials Schematic

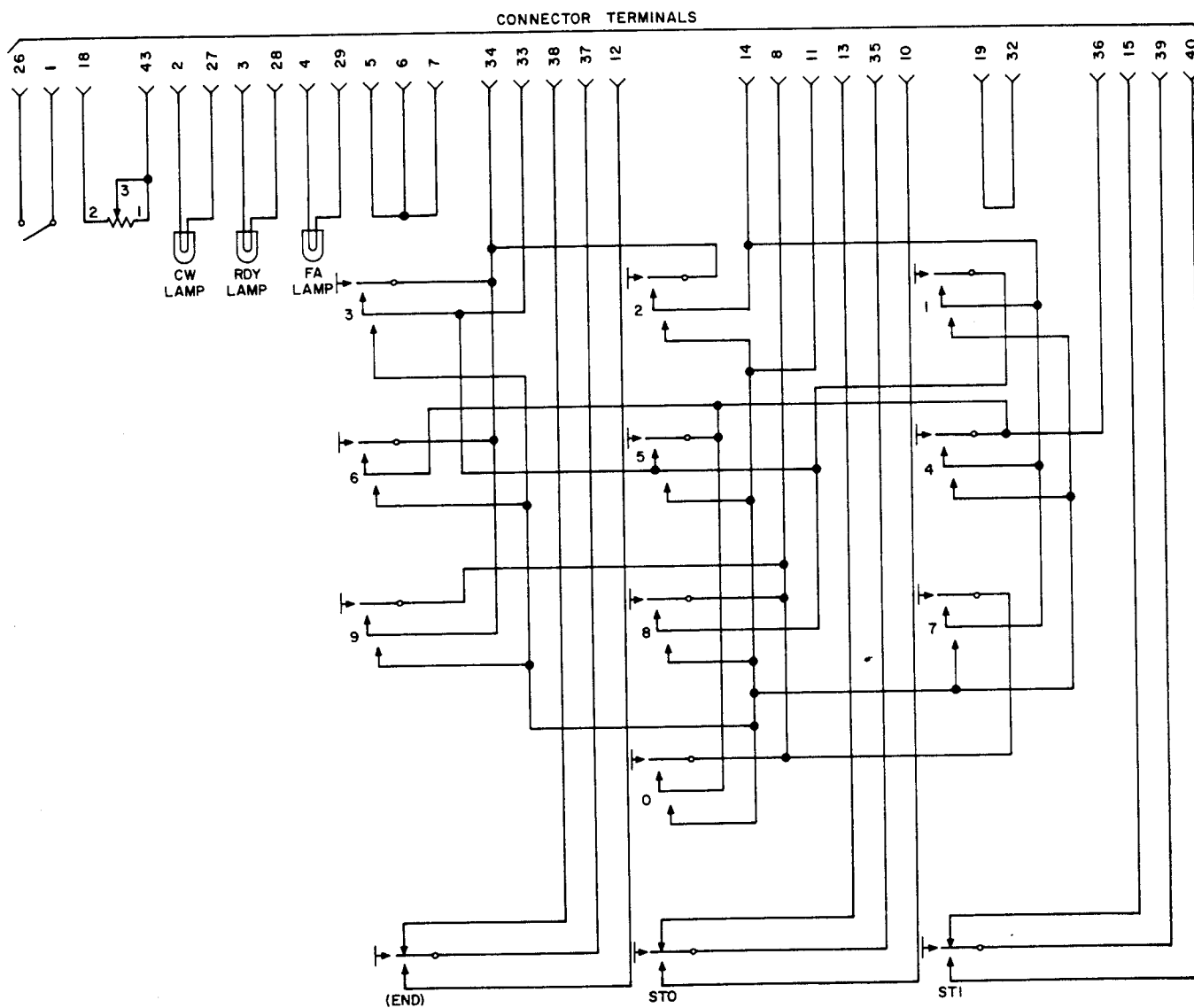


Fig. 6—21D Dial Schematic