

## 549- AND 551-TYPE PUSHBUTTON KEYS

### IDENTIFICATION, INSTALLATION, MAINTENANCE, AND CONNECTIONS

#### 1. GENERAL

**1.01** This section contains information on the 549- and 551-type keys. The 549A1-, B1-, C1-, and D1-type keys replace the 549A-, B-, C-, and D-type keys, respectively, which are rated MD. They are similar to the 549A-, B-, C-, and D-type keys except they are plastic instead of metal and are provided with a snap-in designation window.

**1.02** This section is reissued to:

- Show 549A-, B-, C-, and D-type keys MD
- Add comcode information, Table A
- Add Fig. 4

#### 2. IDENTIFICATION

##### **2.01 Purpose:**

- (a) Selective signaling to as many as eight locations.

- (b) For low voltage use.

##### **2.02 Ordering Guide:**

- (a) Refer to Tables A and B.

##### **2.03 Design Features:**

- (a) 549A-, B-, C-, and D-type (MD) keys (Fig. 1 and 2):
- Four or eight round nonlocking pushbutton keys
  - Metal housing with stay hook depression or provision to anchor wing band
  - Provided with an escutcheon plate, face strip, and designation card
  - Pads of cork and rubber to protect furniture and prevent slipping

#### NOTICE

Not for use or disclosure outside the  
Bell System except under written agreement

- Screw holes under escutcheon plate for mounting.

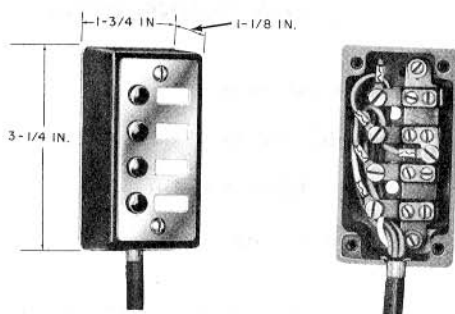


Fig. 1—549A (MD) or 549B (MD) Key (4 Pushbuttons)

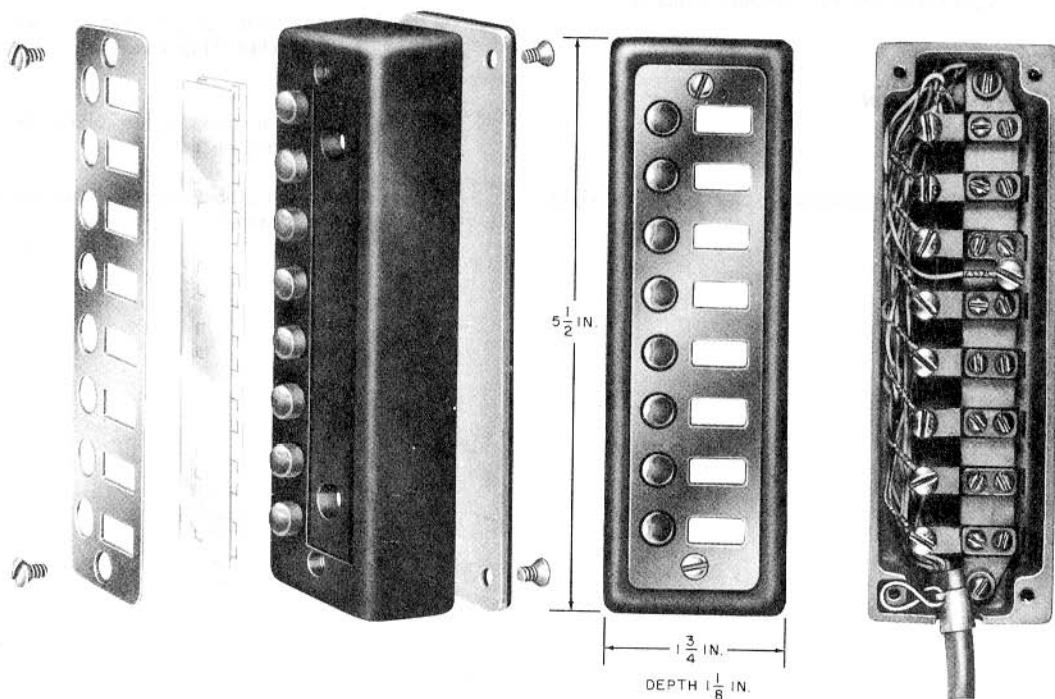


Fig. 2—549C (MD) or 549D (MD) Key (8 Pushbuttons)

◆ TABLE A ◆

**ORDERING GUIDE AND  
PIECE PART INFORMATION  
(549A1, B1, C1, AND D1 KEYS)**

KEY CODE*	NO. OF PUSHBUTTONS	CORD	WINDOW	DESIG. CARD NO.	COLOR AVAILABILITY
549A1	4	M5M-87	841025570	841027972	Black (—03) Ivory (—50) Green (—51) Red (—53) Yellow (—56) White (—58) Lt. Beige (—60) Aqua Blue (—62)
549B1		See Note			
549C1	8	D10R-87	841025562	841027931	
549D1		See Note			

\* When ordering, add suffix for desired color.

Note: Cords are not provided with 549B1 and D1 keys and must be ordered separately. Order M5M-87 (5 feet 6 inches long), for the 549B1 key or the D10R-87 (available in 5 feet 6 inches, 7 feet, 14 feet, and 25 feet) for the 549D1 key. Specify the desired length in ordering information.

◆ TABLE B ◆

**PIECE PARTS INFORMATION  
(549A, B, C, D, AND 551A KEYS)**

KEY CODE	NO. OF PUSHBUTTONS	CORD	FACE STRIP	DESIG. CARD NO.	COLOR AVAILABILITY
549A (MD)	4	M5M-87	802398461	804586527 (P-458652)	Black (—03) Ivory (—50) Green (—51) Red (—53) Yellow (—56) White (—58) Lt. Beige (—60) Aqua Blue (—62)
549B (MD)		See Note	(P-239846)		
549C (MD)	8	D10R-87	804723997		
549D (MD)		See Note	(P-472399)		
551A*	1		804709343 (P-470934)	E-2804†	

\* When ordering, add suffix for desired color.

† Trim Form E-2804 to same size as face strip and use for designation strip.

Note: Cords are not provided with 549B (MD) and D (MD) keys and must be ordered separately. Order M5M-87 (5 feet 6 inches long) for the 549B (MD) key or the D10R-87 (available in 5 feet 6 inches, 7 feet, 14 feet, and 25 feet) for the 549D (MD) key. Specify the desired length in ordering information.

(b) 549A1-, B1-, C1-, and D1-type keys (Fig. 3 and 4):

- Four or eight square nonlocking pushbutton keys
- Plastic housing with cord depression to anchor cord wing band or pin to anchor cord *S* hook assembly
- Provided with window and snap-in designation strip (Fig. 5)

- Cork pad to protect furniture and prevent slipping
- Screw holes under window for mounting to wall, desk, etc. Early model keys were furnished with two screws (Fig. 3 and 4) for mounting key to 75A or 76A bracket, (ordered separately). Current model keys, the mounting screws (4) are furnished with the mounting brackets.

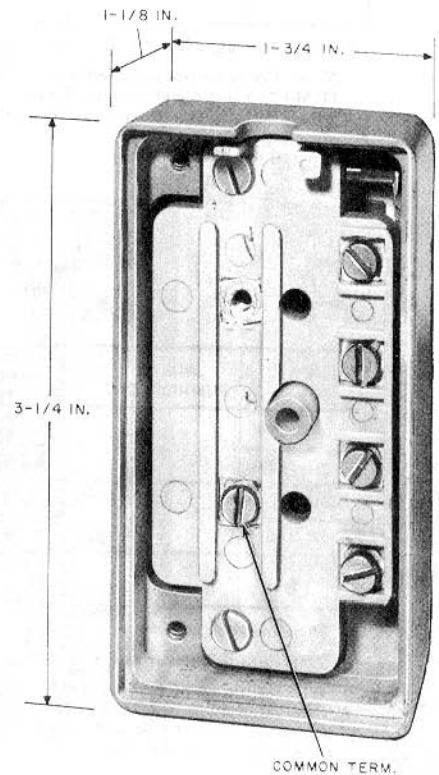
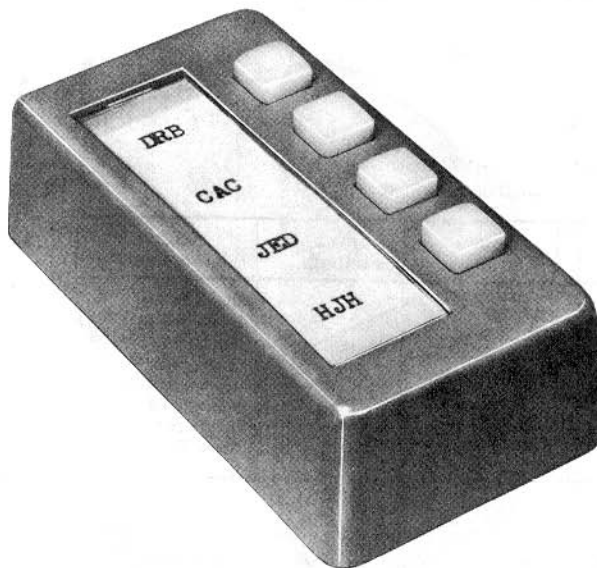


Fig. 3—549B1 Key (4 Pushbuttons)

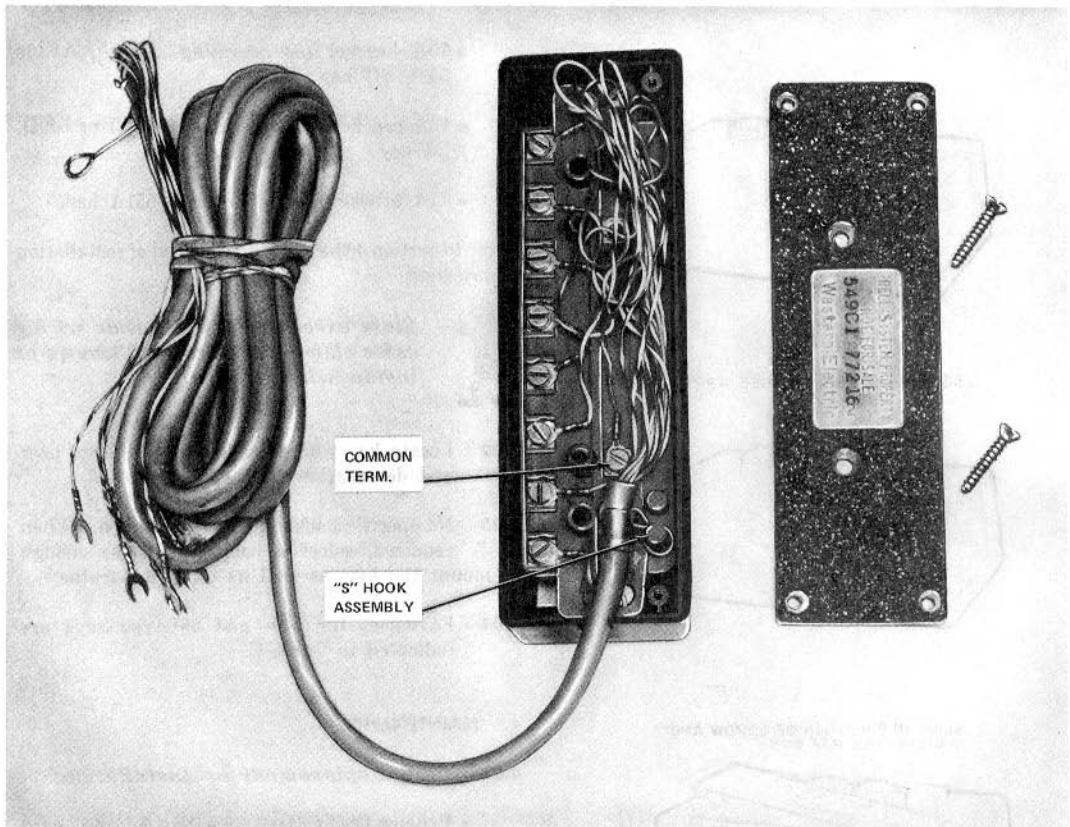
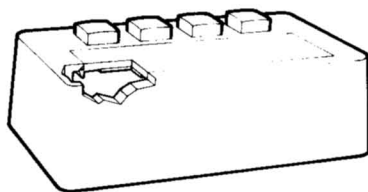


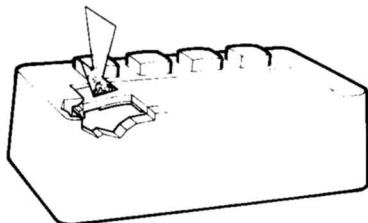
Fig. 4—Interior View of 549C1 Key

(c) 551-Type Key (Fig. 6):

- Single nonlocking pushbutton key
- Molded plastic base, shell, and button
- Cover fastened by a single nickel-plated screw
- Transparent face strip for holding designation form
- Screw holes for mounting
- Screw terminals in base for terminating wires
- Wire entrance notch in base and cover.



1. DEPRESS EITHER END, SEE ARROW



2. SLIDE IN DIRECTION OF ARROW AND WINDOW WILL POP OUT

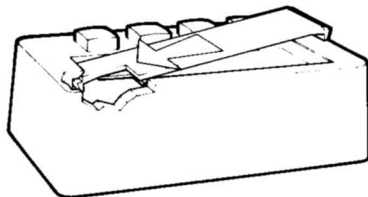


Fig. 5—Removing Designation Strip

### 3. INSTALLATION

3.01 Brackets with mounting screws (ordered separately) are available for mounting the 549- and 551-type keys on the side of a telephone set.

- 75A bracket for mounting a 549A, A1 or 549B, B1 key
- 76A bracket for mounting 549C, C1 or 549D, D1 key
- 77A bracket for mounting a 551A key.

Refer to Section 463-215-100 for method of installation of brackets.



**Store excess cord with inside wiring cable clamps fastened with screws or inside wiring nails.**

- 3.02 Locate key where readily accessible to user and designation strip can be seen.
- 3.03 No specific backboards are provided. When required, select a backboard large enough to mount the key, as well as other apparatus.
- 3.04 Fasteners for 549- and 551-type keys are indicated in Table C.

### 4. MAINTENANCE

#### 4.01 Cord Replacement or Installation:

- Replace D9G (MD) cord with a D10R-87 cord or install a D10R-87 cord in 549D1 key (8-button key)
- Fasten cord in "S" hook depression (Fig. 2) or under key assembly mounting screw (Fig. 7).

**Note:** The 549C1 and D1 keys have a pin (Fig. 4) instead of a screw on which to anchor the cord "S" hook.

- Install an M5M-87 cord in 549B1 key. Provisions provided between key cover and terminal strip to anchor cord wing band.



**Do not allow the "S" hook to contact the brass strip of the contact pile up or terminal screws.**

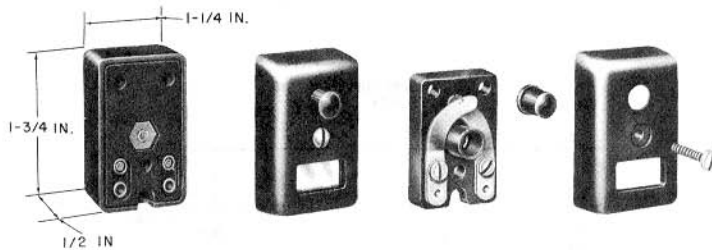


Fig. 6—551A Key

◆ TABLE C ◆

FASTENERS FOR 549- AND 551-TYPE KEYS

KEY TYPE	SURFACE	FASTENER (NOTE)
549	Hardwood	1-1/2 in. No. 8 FH Screws
	Softwood	
	Metal	
551	Hardwood	1/2 in. No. 7 PH Screws
	Softwood	
	Metal	

Note: Drill lead hole as follows:  
 No. 6 screw — 1/16 in. drill  
 No. 8 screw — 3/32 in. or No. 33 drill

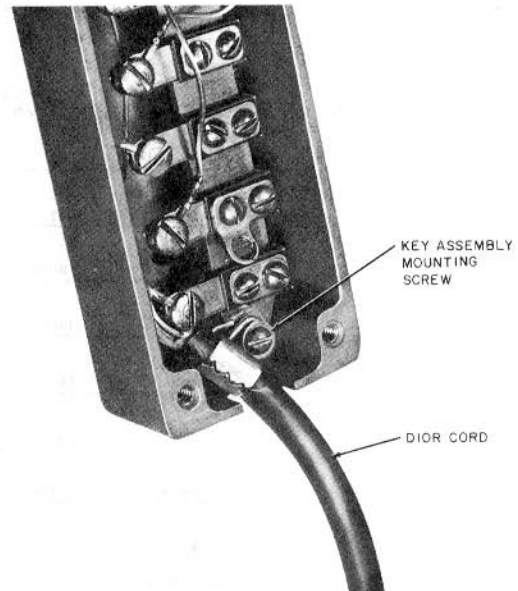


Fig. 7—Fastening D10R-87 Cord in 549C (MD) Keys

#### 4.02 Pushbuttons:

- Should seat freely in their sockets
- Inspect for foreign matter between sockets and buttons
- Clean buttons and sockets with approved cleaning cloth.

- Adjust with a 466A tool
- Clean contacts with a 265C tool.

#### 4.03 Operating Springs:

- Should bring pushbuttons up to a positive stop

### 5. CONNECTIONS

5.01 Fig. 8 shows connections for the 549-type keys. Substitute inside wire of sufficient capacity when using keys without cords.

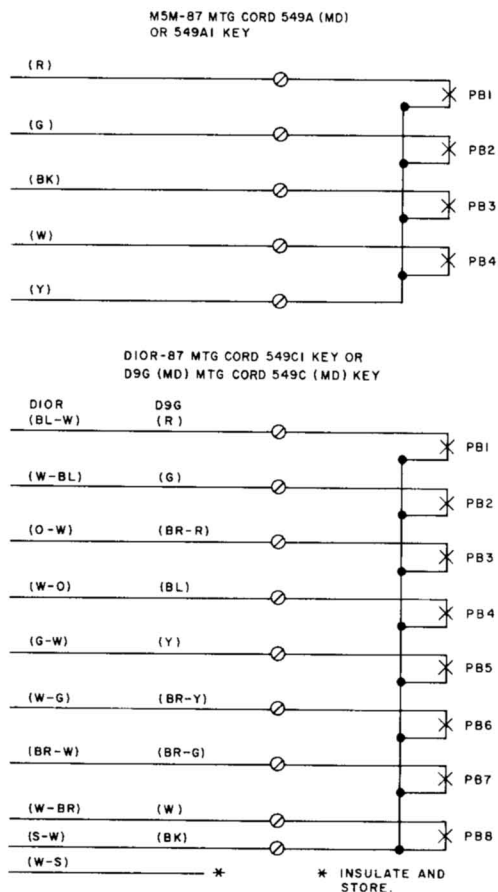


Fig. 8—549-Type Key, Connections