

## COIN COLLECTORS — POSTPAY — 150K, L, 162A, B, C, D

### MANUAL — MAGNETO — CONNECTIONS

#### 1.00 INTRODUCTION

This section covers the combination of apparatus, circuit diagram, and connections for the 150K, L, 162A, B, C, and D coin collectors when used for manual postpay service at magneto stations.

#### 2.00 GENERAL

**2.01** Connections for this service require some changes in the wiring of the coin collectors; therefore, the connection diagrams herein should be followed closely. It should also be noted that a readjustment must be made in the operating sequence of the switchhook contact springs when the 150K, L, or 162A, B coin collector is used for this service.

**2.02** These coin collectors may be used with the 400A, K, and CD or 415H and CD subscriber sets at magneto stations.

**2.03** The 37A varistor, shown in the circuit diagrams, is not required at postpay coin collector stations; however, coin collectors which are equipped with the varistor may be used for this service.

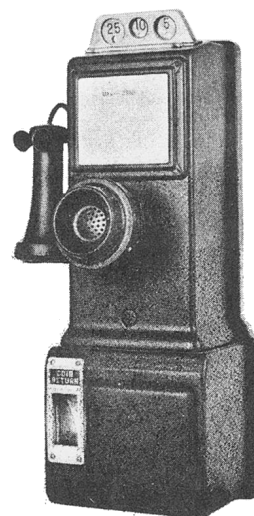


FIG. 1—150K, L, 162A, B, C, D—MANUAL SET

TABLE A—COMBINATION OF APPARATUS—LOWER HOUSING AND BACKPLATE

Type Collector	Receiver	Receiver Cord	Varistor
150K, L 162A, B, C, D	706A	R2DY	37A

TABLE B—COMBINATION OF APPARATUS—UPPER HOUSING

Type Collector	Transmitter	Transmitter Cords	Apparatus Blank	Card Holder	Coin Gauge Guard	Coin Chute
150K	635A	2-T1C	50C	1B	KS-8487, L2	P-338883
150L						P-338884
162A, C						P-338883
162B, D						P-338884

3.00 CONNECTIONS

3.01 The circuit diagrams in this section are shown on a foldout page so that they may be associated with the circuit diagram of the appropriate subscriber set to provide complete information for the connection of station apparatus.

3.02 The designations on the transfer contact terminals in some upper housings are different than shown herein. Corresponding terminals are as shown in Table C.

TABLE C—UPPER HOUSING

Upper Housing	Terminals				
Original	W	Y	BK-YY	BB-YY	5*
Replacement	W	Y	YY	BB	BK-YY

\*Terminal 5 is not always furnished.

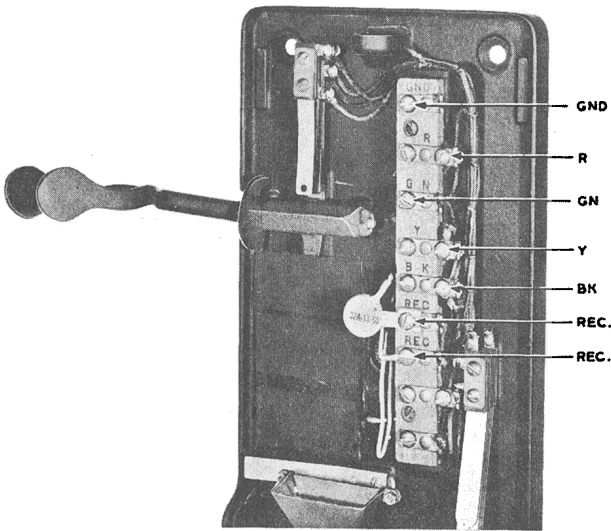


FIG. 2—150K, L, 162A, B—LOWER HOUSING AND BACKPLATE TERMINALS

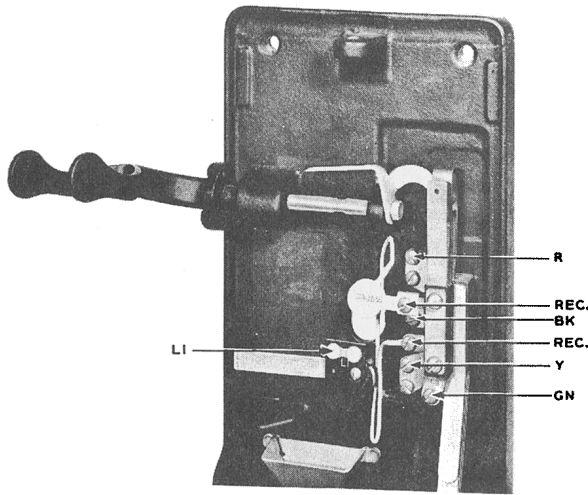


FIG. 4—162C, D—LOWER HOUSING AND BACKPLATE TERMINALS

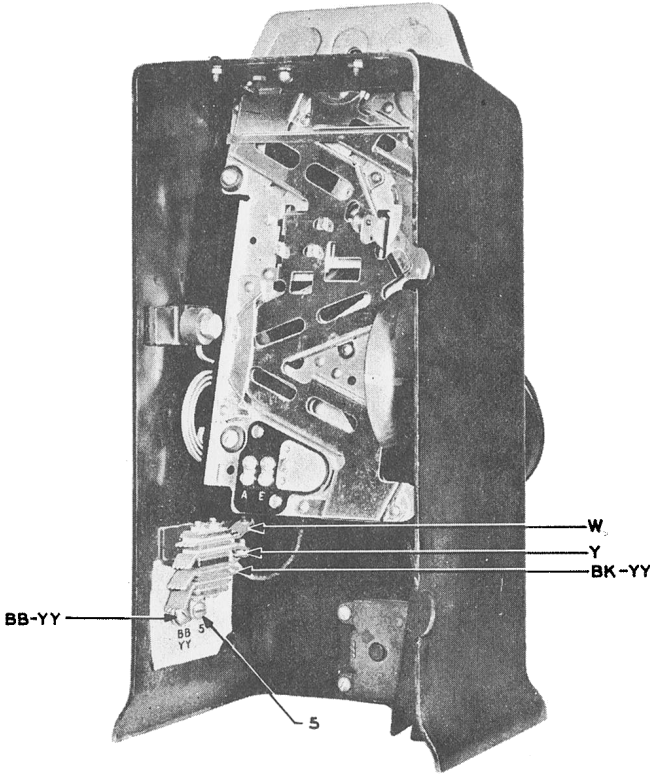
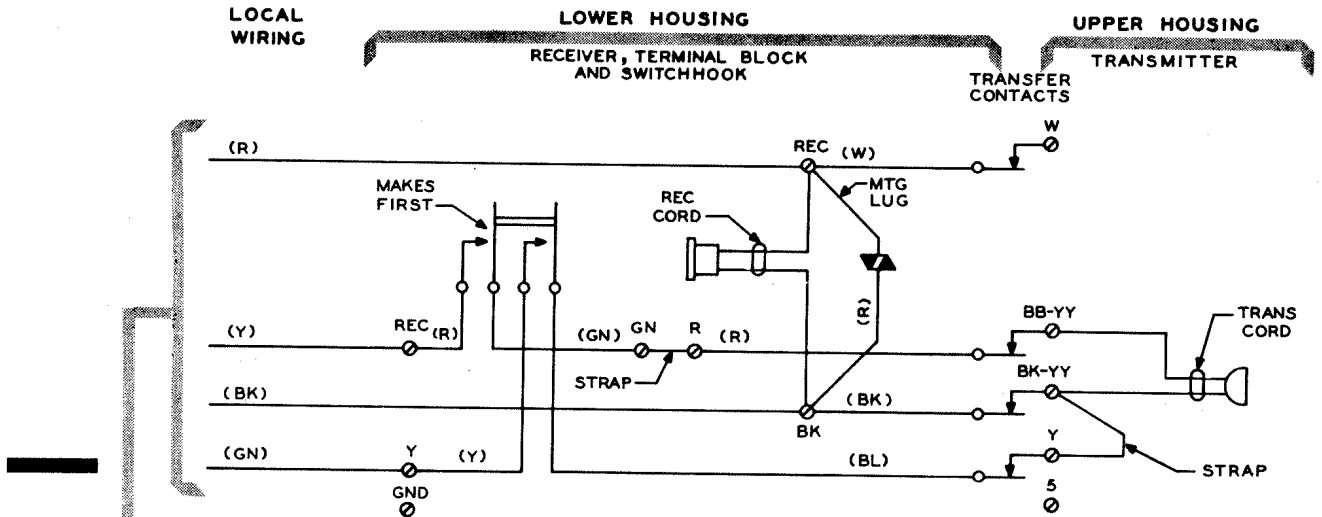


FIG. 3—150K, L, 162A, B—UPPER HOUSING TERMINALS

3.03 Circuit diagram of 150K, L, 162A, B coin collectors when used with 400A, K, CD, 415H, CD subscriber sets.



3.04 Circuit diagram of 162C, D coin collectors when used with 400A, K, CD, 415H, CD subscriber sets.

