

KS-19245, LISTS 1 AND 13 TELEPHONE ANSWERING SETS

CONTENTS	PAGE	CONTENTS	PAGE
1. GENERAL	2	Message Playback (Using Speaker)	14
2. IDENTIFICATION	2	Message Indicator Dial	14
Design Features	3	Turning Telephone Answering Set Off	14
Optional Features	4	Cartridge Installation	14
Ordering Guide	4	Cartridge Removal	14
3. COMPONENTS AND ACCESSORIES DESCRIPTION	4	ACCESSORIES	14
KS-19245, List 1 Telephone Answering Set	4	Foot Switch, KS-19245, List 8	14
KS-19245, List 13 Telephone Answering Set	5	Earphone, KS-19245, List 9	15
Optional Equipment	5	Backspace Unit, KS-19245, List 12	15
4. OPERATION	8	5. OPTIONS	16
Announcement Record	9	Voice Control Disable	16
Announcement Check (Using Handset)	9	Calling Party Control	16
Announcement Check (Using Speaker)	9	Speak-up (Talk-down) Tone Disable	17
Automatic Answer and Record	9	Ring Delay Option	17
Automatic Answer Only	10	Message Recording Capacity Option	17
Forward or Rewind	11	Announcement Recording Time Option	19
Erase Message	11	6. INSTALLATION	21
Message Playback (Using Handset)	14	Location	21
		Power	21

NOTICE

Not for use or disclosure outside the
Bell System except under written agreement

CONTENTS	PAGE
Connections, Line	22
Test at Time of Installation	22

Since this reissue covers a general revision, arrows ordinarily used to indicate changes have been omitted.

1.03 This section contains information formerly contained in Sections 514-155-101 and 514-155-200.

2. IDENTIFICATION

2.01 The KS-19245, Lists 1 and 13 telephone answering sets (Fig. 1 and 2) are automatic answering sets for either answer and record, or answer only service.

1. GENERAL

1.01 This section covers identification, installation, operation, and connection information on the KS-19245, List 1 (MD) (Fig. 1) and List 13 (Fig. 2) telephone answering set.

1.02 This section is reissued to:

- Show the KS-19245, List 1 (MD)
- Add the KS-19245, List 13

- This answering set is used with individual lines, PBX extension lines, 2-party selective flat or message rate lines, and key telephone systems
- Use of the telephone answering set in installations that have Dial Long Lines

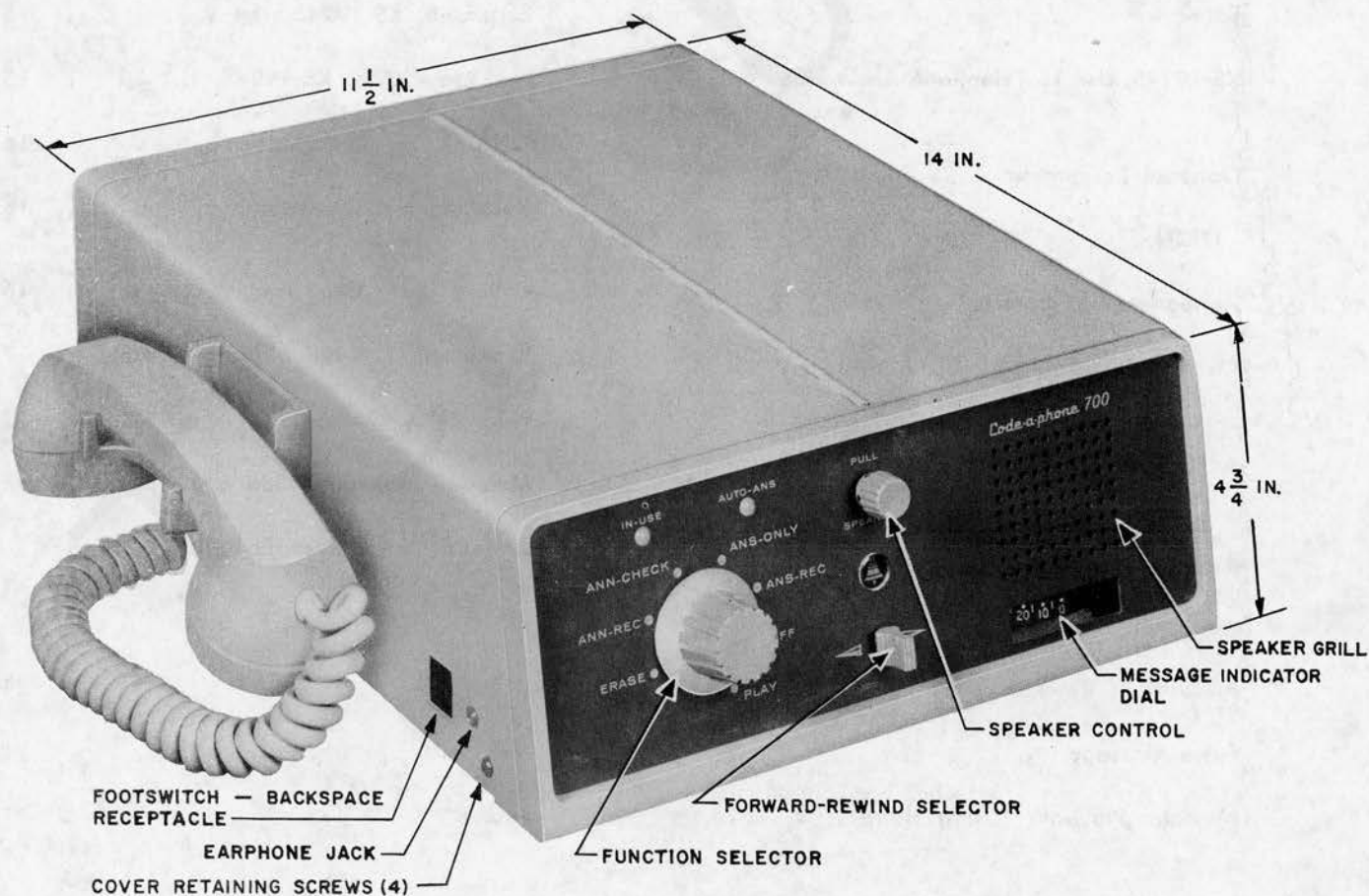


Fig. 1—KS-19245, List 1 Telephone Answering Set

(DLL) circuits is nonstandard and not recommended. The dc calling party control features of the set are not compatible with a DLL circuit since DLL circuits do not regenerate disconnect signals towards the subscriber.

- The KS-19245, List 13 telephone answering set replaces the KS-19245, List 1 set and provides the same operational features plus calling party control (CPC) options, ring delay, and an input jack for modular mounting cord installations.

Note: List 13 set is recommended at locations where 30Hz ringing current is used.

2.02 Design Features:

- Announcement recording on magnetic tape with capacity of 3 minutes
- Adjustment for limiting announcement recording interval

- Handset, for recording announcements, and for checking recorded announcements or playback of recorded incoming messages
- Earphone jack, for use with KS-19245, List 9 earphone, for playback of recorded incoming messages
- Tape cartridge, for recording of incoming messages, with maximum recording time of 2 hours
- Adjustment for incoming message recording time for 1 or 2 hours
- Voice control operation during incoming message recording
- DC calling party control during automatic answer cycle
- Answer only operation
- Foot switch receptacle to be used with KS-19245, List 8 foot switch for operation

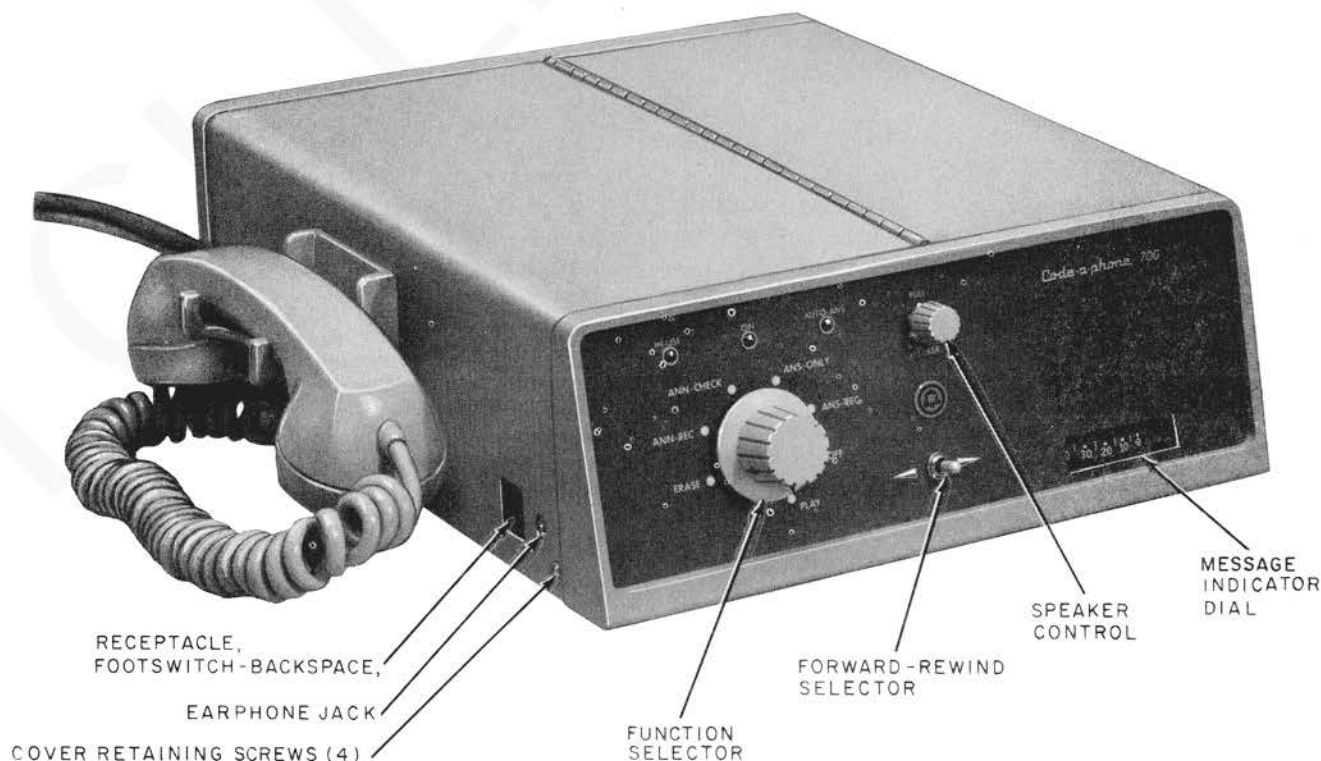


Fig. 2—KS-19245, List 13 Telephone Answering Set

during playback of recorded incoming messages

- Message indicator dial to show position of message tape
- Calling party control options provide selection of interrupt time from 0.5 to 450 milliseconds (List 13 only)
- Ring delay. Answer on first ring or after approximately 12 seconds of ringing (List 13 only)
- Modular connections (List 13 only)
- Housed in a metal case. The cover has a light olive gray textured finish and the front panel has a blue-gray enamel finish. Dimensions of the Lists 1 and 13 sets are shown on Fig. 1. Weight of List 1 set is 31 pounds and List 13 set is 24 pounds.

2.03 *Optional Features:*

- Voice Control Disable
- Calling Party Control (CPC)
- Speak-up (Talk-down) Tone Disable
- Ring Delay (List 13 set only)

Note: Options are implemented by soldering or removing a strap in the List 1 set or repositioning a jumper plug in the List 13 set.

- Message Recording Capacity
- Announcement Recording Time.

2.04 *Ordering Guide:*

- (a) KS-19245, List 13 (D4BU mounting cord must be ordered separately).
- (b) The KS-19245, List 13 replaceable components may be ordered as follows:
 - A3 Power Supply, KS-19245, List 19
 - A4 Amplifier Board, KS-19245, List 15

- A5 Deck Control Board, KS-19245, List 16
- A6 Logic Board, KS-19245, List 17
- A8 Tape Deck, KS-19245, List 21
- Cartridge, KS-19245, List 6.

Note: The List 13 set comes equipped with power cord.

- (c) The KS-19245, List 1 replaceable components may be ordered as follows:

- Recorder (Announcement), KS-19245, List 2
- Recorder (Message), KS-19245, List 3
- Amplifier, KS-19245, List 4
- Amplifier, KS-19245, List 5
- Cartridge, KS-19245, List 6
- Cord, Power, KS-19245, List 11.

- (3) The following optional equipment may be ordered separately as required:

- Earphone, KS-19245, List 9
- Tape Cartridge, KS-19245, List 6
- Foot Switch, KS-19245, List 8
- Backspace Unit, KS-19245, List 12
- Service Manual, KS-19245, List 18 (List 13 only).

3. COMPONENTS AND ACCESSORIES DESCRIPTION

3.01 *KS-19245, List 1 Telephone Answering Set:*

- (a) KS-19245, List 2 Recorder (Fig. 3 and 4) is the announcement recording mechanism. It provides a maximum recording capacity of 3 minutes, and incorporates a variable cycle feature that limits the reproduce cycle to the duration of the recorded announcement only. This recorder is equipped with 1/4-inch wide plastic base magnetic recording tape installed on special reels. The tape and reels form an integral part

of the recording mechanism and **cannot** be changed by the customer since replacement of either requires partial disassembly of the mechanism. Facilities are provided for limiting the maximum recording time to 15-second increments (from 15 seconds to 90 seconds) or 30-second increments (from 90 seconds to 180 seconds). This is done by adjusting the variable limit switch assembly. The adjustment may only be made by the installer.

(b) KS-19245, List 3 Recorder (Fig. 5 and 6) is the incoming message recording mechanism. It provides a maximum recording capacity of 2 hours on 1/4-inch wide plastic base magnetic recording tape. This tape is contained in the KS-19245, List 6 cartridge which may be conveniently changed by the customer. Facilities are provided for limiting the message recording time to 1 or 2 hours. This is done by adjusting the limit switch actuator (Fig. 6). The adjustment may only be made by the installer.

(c) KS-19245, List 4 Amplifier (Fig. 7) is a printed circuit wiring board transistor amplifier for recording and reproducing. The amplifier incorporates an automatic volume control feature. It also contains the 1400-cycle oscillator and notch rejection filter.

(d) KS-19245, List 5 Amplifier (Fig. 8) is a printed circuit wiring board. It contains the voice-operated circuit and the calling party control circuit.

(e) KS-19245, List 6 Cartridge (Fig. 9) provides a 1/4-inch wide plastic base magnetic recording tape with a capacity for 2 hours of incoming message recording time.

(f) KS-19245, List 11 Power Cord is an 8-foot light olive gray colored cord. It is plug-connected to the answering set and provides for connection to a 3-wire, 110-volt ac outlet.

3.02 **KS-19245, List 13 Telephone Answering Set:**

(a) KS-19245, List 21 Tape Deck, A8, (Fig. 10 and 11) is the combined announcement and message recording mechanism. The announcement record mechanism (Fig. 10) provides a maximum recording capacity of 3 minutes and incorporates a variable cycle feature that limits the reproduce

cycle to the duration of the recorded announcement only. This recorder is equipped with 1/4-inch wide plastic base magnetic recording tape installed on special reels. The tape and reels form an integral part of the recording mechanism and **cannot** be changed by the customer since replacement of either requires partial disassembly of the mechanism. Facilities are provided for limiting the maximum recording time to 15-second increments (from 15 seconds to 90 seconds) or 30-second increments (from 90 seconds to 180 seconds). This is done by adjusting the timer cap. The adjustment may only be made by the installer. The incoming message recording mechanism (Fig. 11) provides a maximum recording capacity of 2 hours on 1/4-inch wide plastic base magnetic recording tape. This tape is contained in the KS-19245, List 6 cartridge which may be conveniently changed by the customer. Facilities are provided for limiting the message recording time to 1 or 2 hours. This is done by adjusting the limit switch actuator (Fig. 10). The adjustment may only be made by the installer.

(b) KS-19245, List 19 Power Supply, A3, (Fig. 12) is a combination subchassis consisting of a power transformer, and a printed circuit wiring board containing the regulated power supply circuitry, and line connection terminals.

(c) KS-19245, List 15 Amplifier Board, A4, (Fig. 13) is a printed circuit wiring board containing the record/playback amplifier, automatic gain control, tone generator, and relay driver circuitry.

(d) KS-19245, List 16 Deck Control Board, A5, (Fig. 14) is a printed circuit wiring board containing the necessary control circuitry for operating the tape recording and playback mechanism.

(e) KS-19245, List 17 Logic Board, A6, (Fig. 15) is a printed circuit wiring board containing the line seizure, ring-up circuitry, and installer options.

3.03 **Optional Equipment:**

(a) KS-19245, List 8 Foot Switch (Fig. 16) provides for foot control operation during playback of the recorded incoming messages. The foot switch pedal has two active positions,

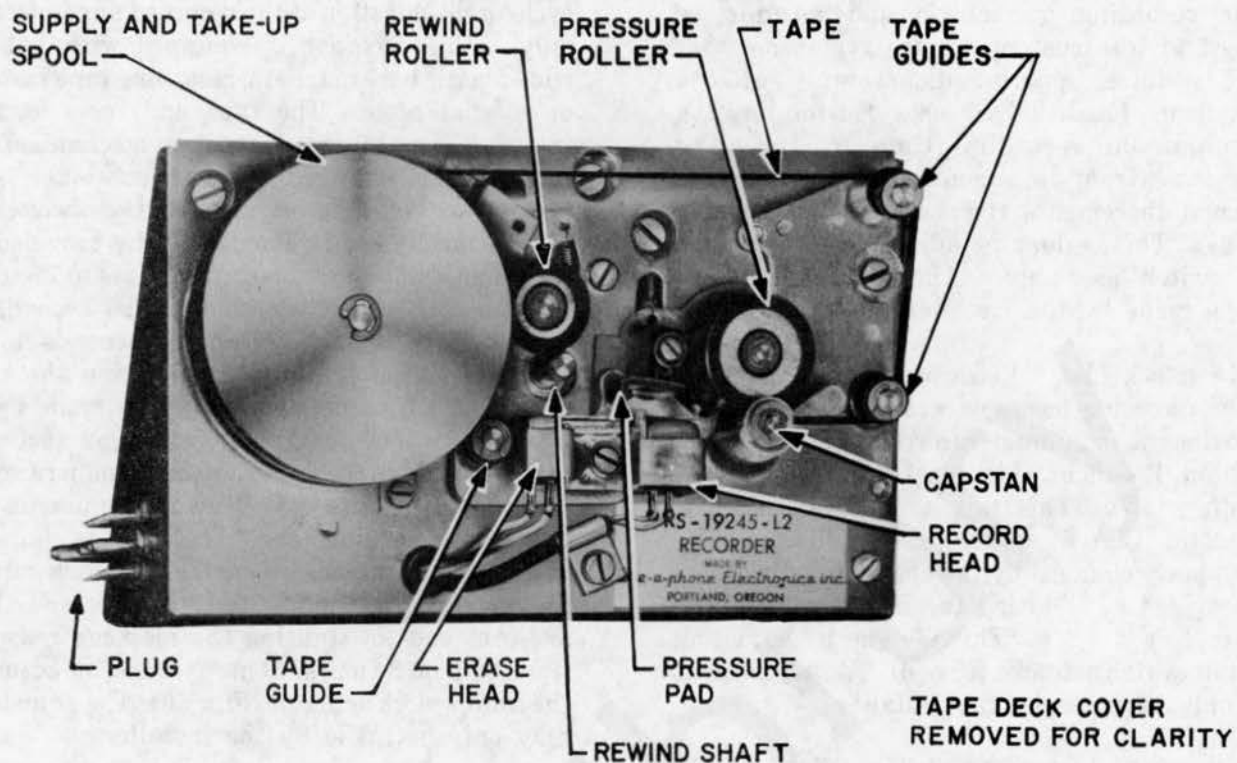


Fig. 3—KS-19245, List 2 Recorder (Reel Side)

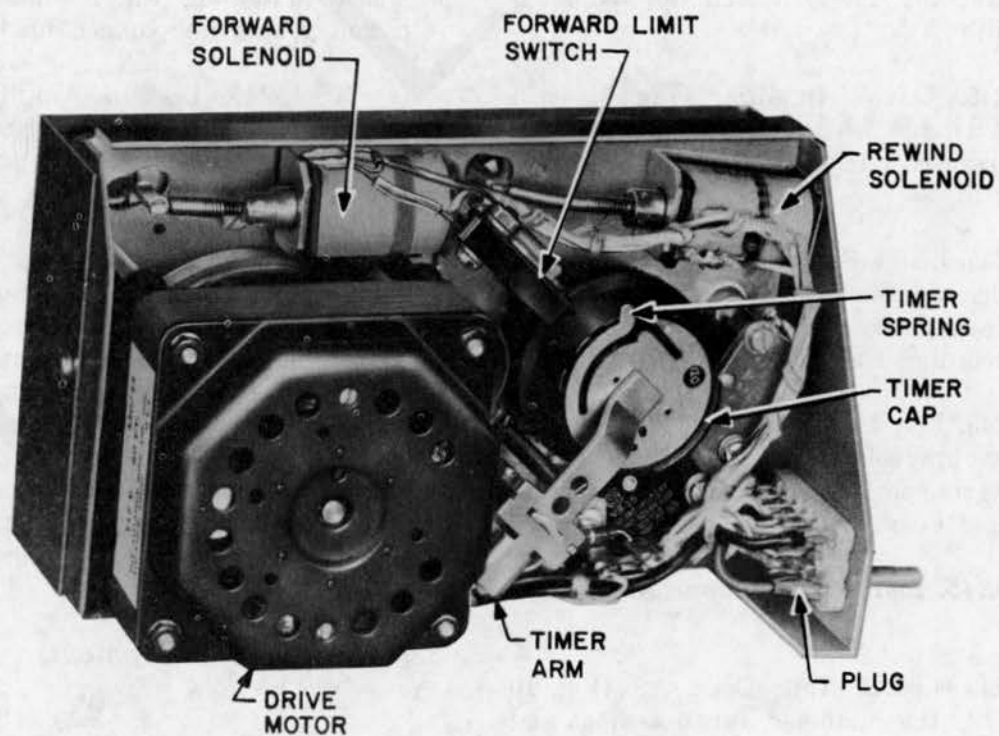


Fig. 4—KS-19245, List 2 Recorder (Motor Side)

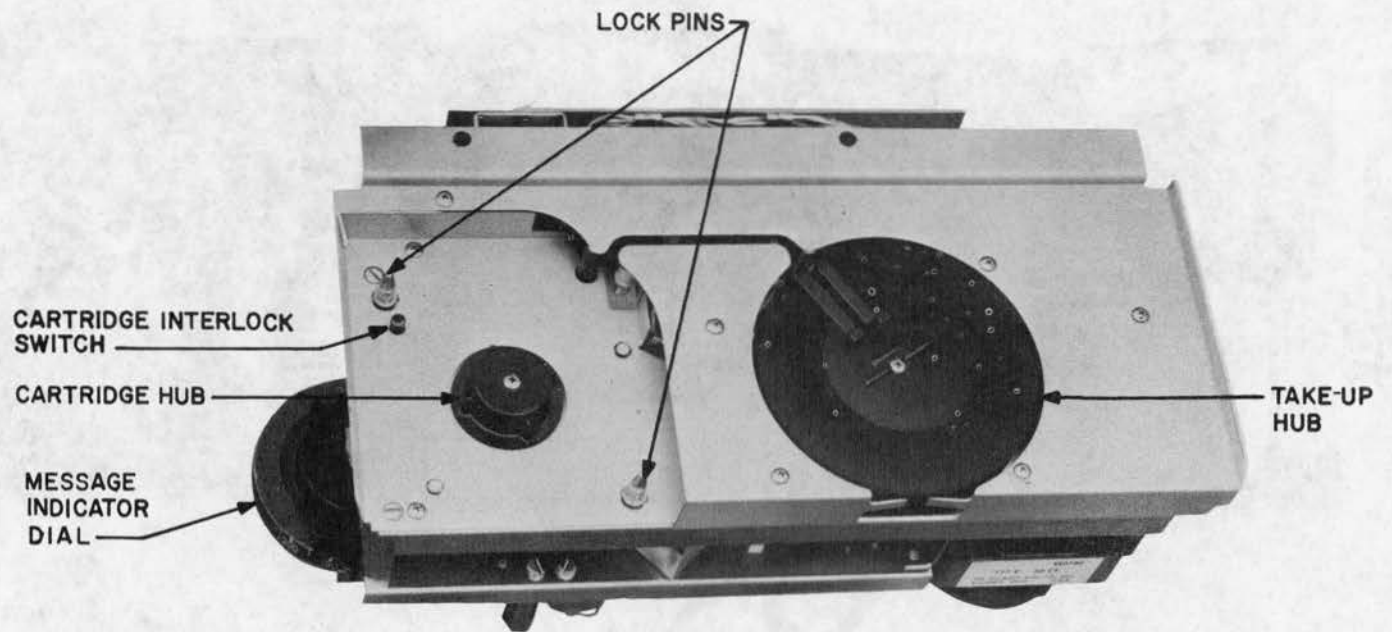


Fig. 5—KS-19245, List 3 Recorder (Reel Side)

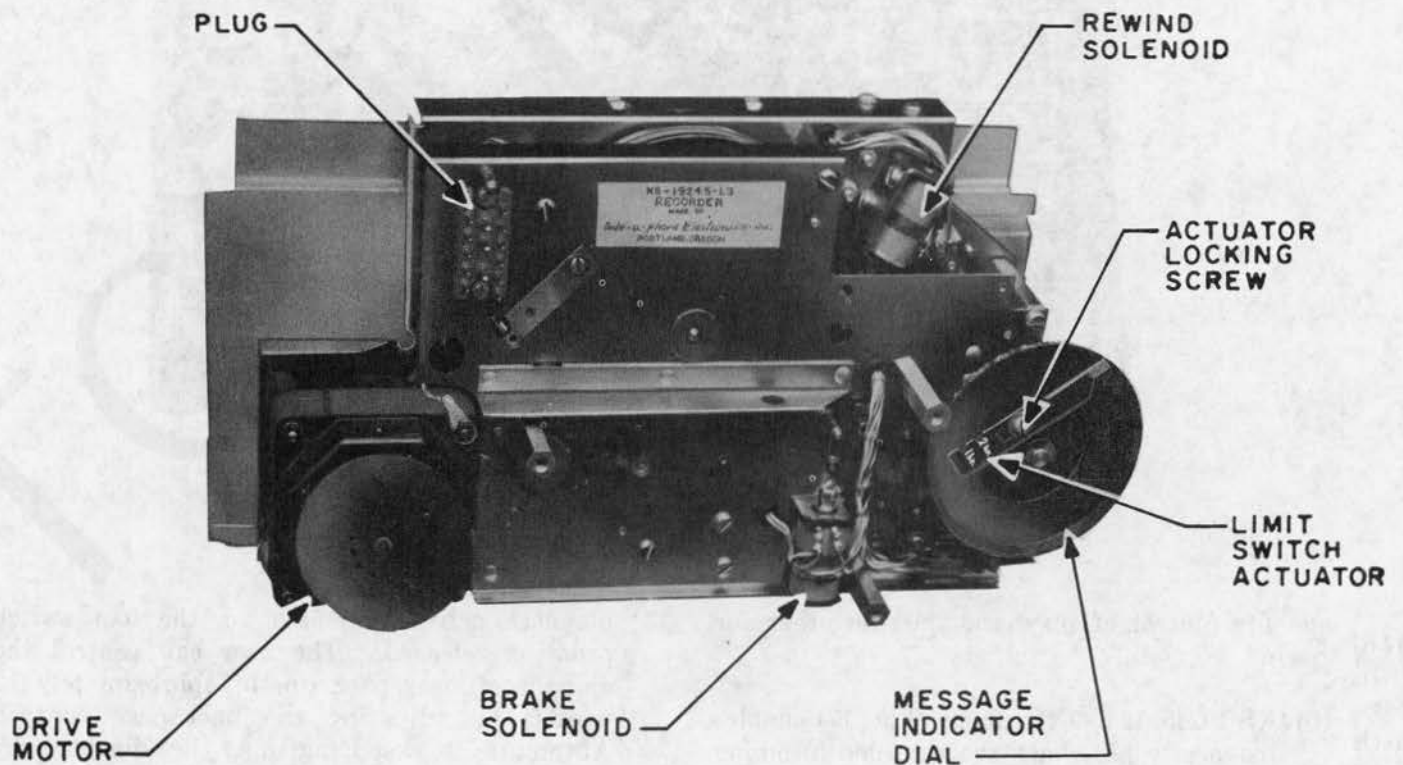


Fig. 6—KS-19245, List 3 Recorder (Motor Side)

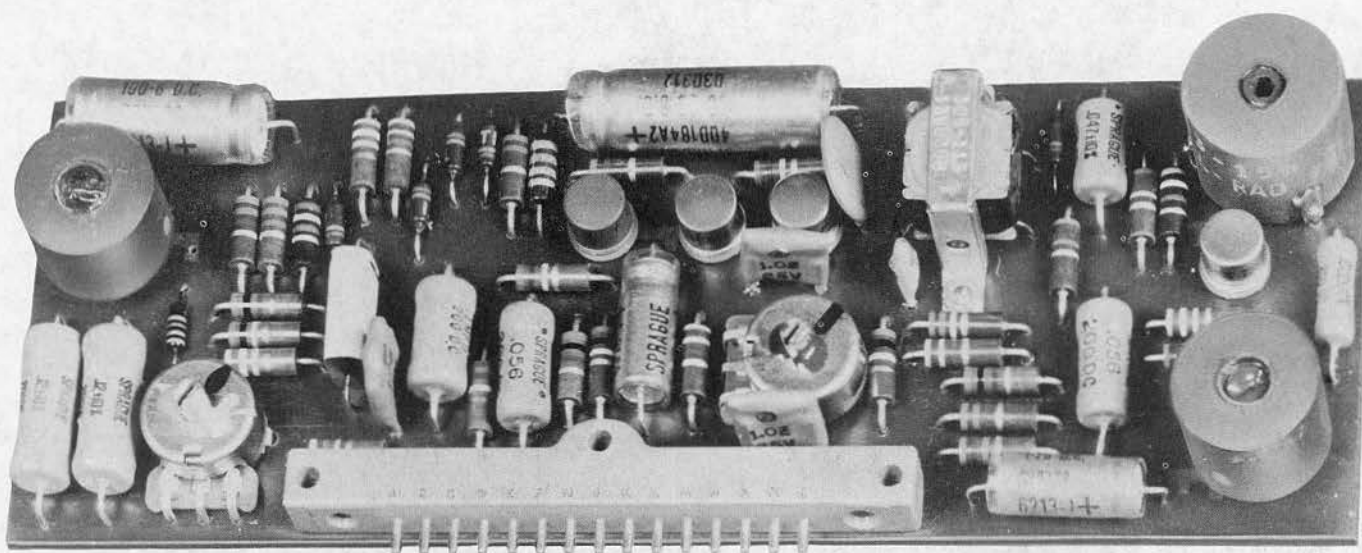


Fig. 7—KS-19245, List 4 Amplifier

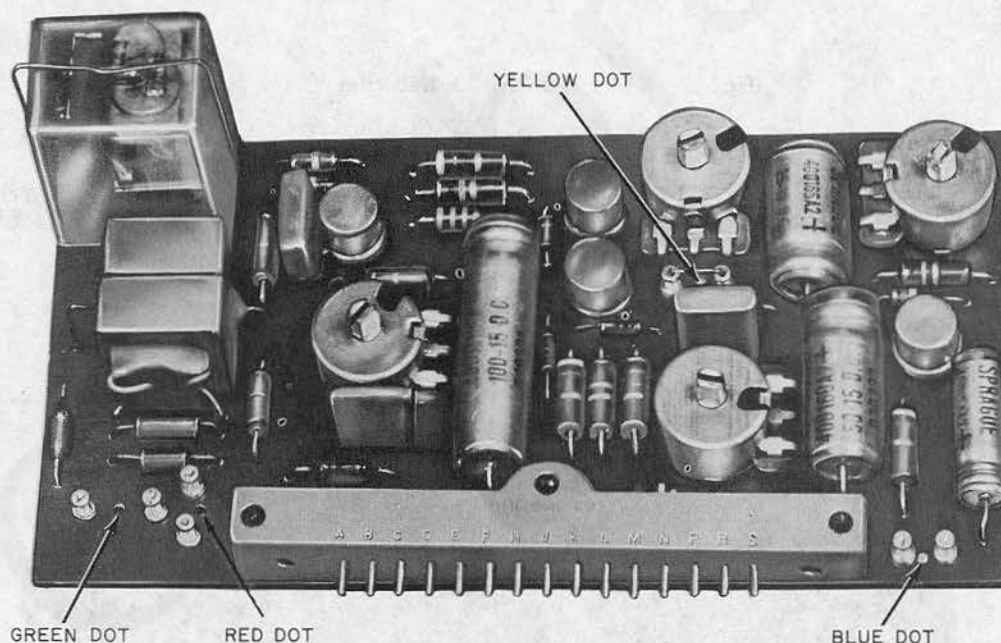


Fig. 8—KS-19245, List 5 Amplifier

one for control of playback and the other for rewind.

(b) KS-19245, List 9 Earphone (Fig. 17) enables listener to play back the recorded incoming messages; for example, during transcribing. The plastic holder on the ear piece may be of either version as shown in Fig. 17.

(c) The KS-19245, List 12 Backspace Unit (Fig. 18), allows automatic backspacing of the message tape a few words each time the

playback activated control on the foot switch pedal is released. The user can control the amount of backspace (up to approximately 12 words) by adjusting the backspace control. Automatic backspacing may be disabled by turning the backspace control to its zero position.

4. OPERATION

4.01 Refer to Fig. 1 or 2.

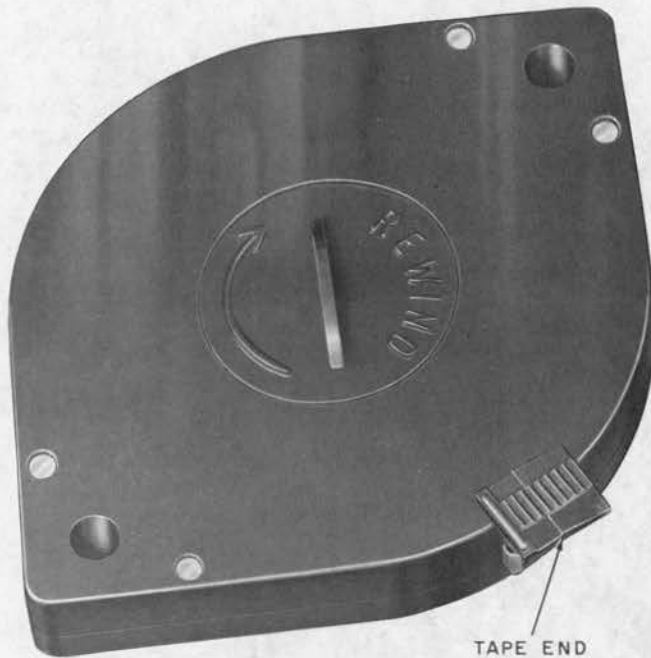


Fig. 9—KS-19245, List 6 Cartridge

Caution: Damage to the message tape and its mechanism will result if the message tape end is not properly secured in the snap retainer of the answering set.

4.02 Announcement Record:

- (1) Set function selector to ANN-REC.
- (2) Lift handset, depress and hold handset button. Commence dictating announcement when IN-USE lamp lights.

Note: As new announcement is recorded, old announcement will be erased. Release handset button immediately after announcement is complete. If announcement is too long, IN-USE lamp will extinguish and the announcement must then be shortened and rerecorded. (For optional announcement length, see 5.06.)

4.03 Announcement Check (Using Handset):

- (1) Set function selector to ANN-CHECK.
- (2) Lift handset, depress and hold handset button.

Note: Announcement will be played repeatedly as long as a handset button is held depressed.

4.04 Announcement Check (Using Speaker):

- (1) Set function selection to ANN-CHECK.
- (2) Pull out SPEAKER control knob.
- (3) Depress and hold handset button (List 1 only).
- (4) Rotate SPEAKER control knob to adjust volume.

Note: Announcement will be played back repeatedly as long as handset button is held depressed.

4.05 Automatic Answer and Record:

- (a) After announcement has been recorded and checked, set is ready to be placed in automatic answer.
- (1) Set function selector to ANS-REC:
 - (a) AUTO-ANS lamp lights.
 - (b) Ringing current starts automatic answer cycle.
 - (c) IN-USE lamp lights and AUTO-ANS lamp extinguishes, indicating incoming call.
 - (d) A dc termination which trips ringing is automatically placed across line.
 - (e) Recorded announcement is reproduced on line.
 - (f) At end of announcement, a single short beep tone will be transmitted to calling party as an indication for calling party to start talking.
 - (g) Message is recorded on message tape.

Note: Connection of telephone answering set to line is under control of a voice operated circuit and a calling party control circuit.

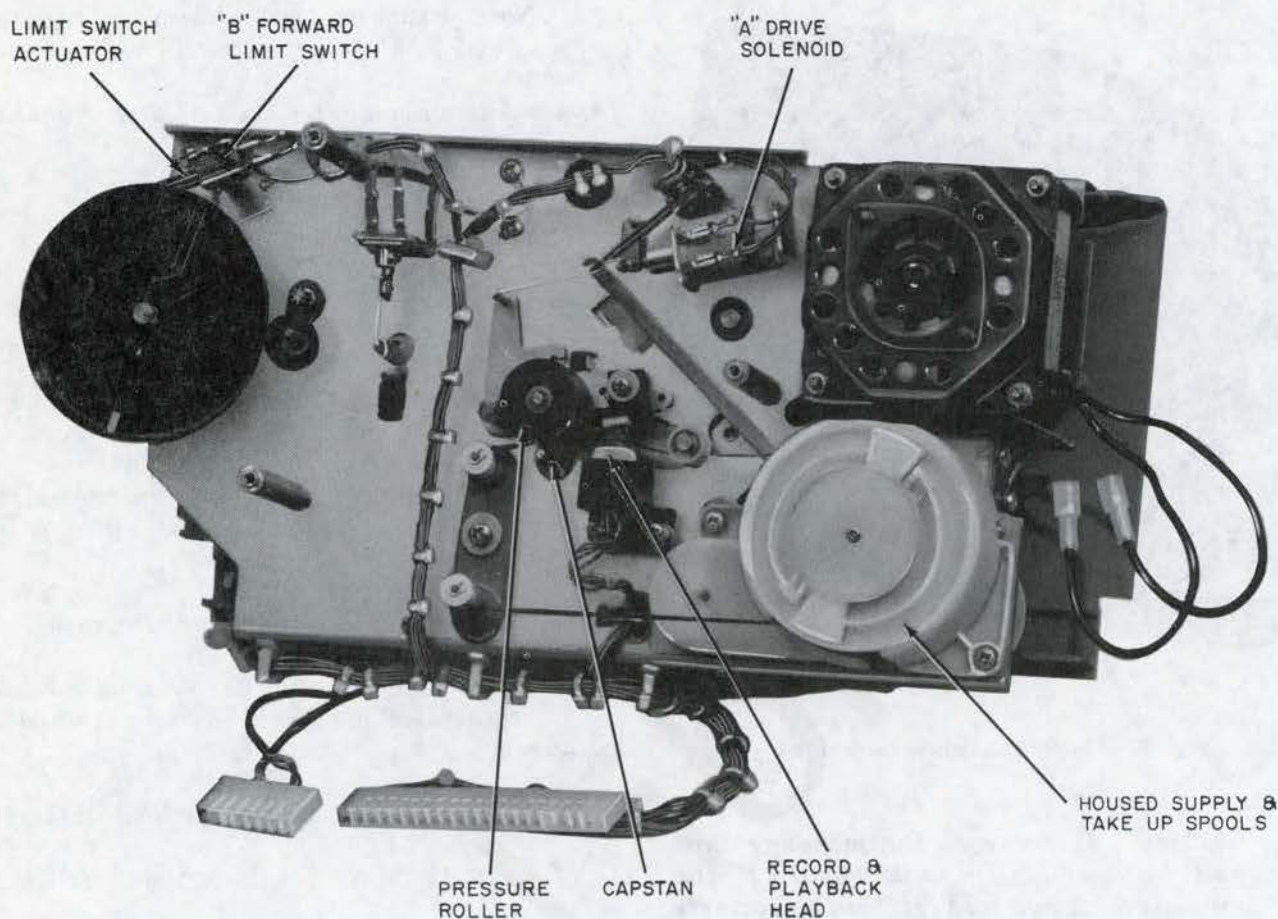


Fig. 10—KS-19245, List 21 Recorder (Announcement Side)

(h) The voice operated circuit will allow automatic recording of speech from line so long as speech of proper level is present on line, up to the capacity of tape. If for a period of approximately 4 seconds the level of speech has been lower than required for satisfactory recording, speak-up (talk-down) tone is transmitted to calling party as signal to speak louder. Tone is removed when speech level is raised. If speech level is not raised within approximately 8 seconds, the set will automatically disconnect.

(i) Installation where the central office provides a momentary interruption of central office battery accompanying calling party hang-up, the calling party control circuit will disconnect the set from the line.

(j) List 13 set has Calling Party Control (CPC) interrupt time options which are

selected and set depending on the type of central office.

(k) Amount of tape recorded is indicated by message indicator dial.

4.06 Automatic Answer Only:

(a) After announcement has been recorded and checked, set is ready to be placed in automatic answer.

(1) Set function selector to ANS-ONLY:

(a) AUTO-ANS lamp lights.

(b) Ringing current starts automatic answer cycle.

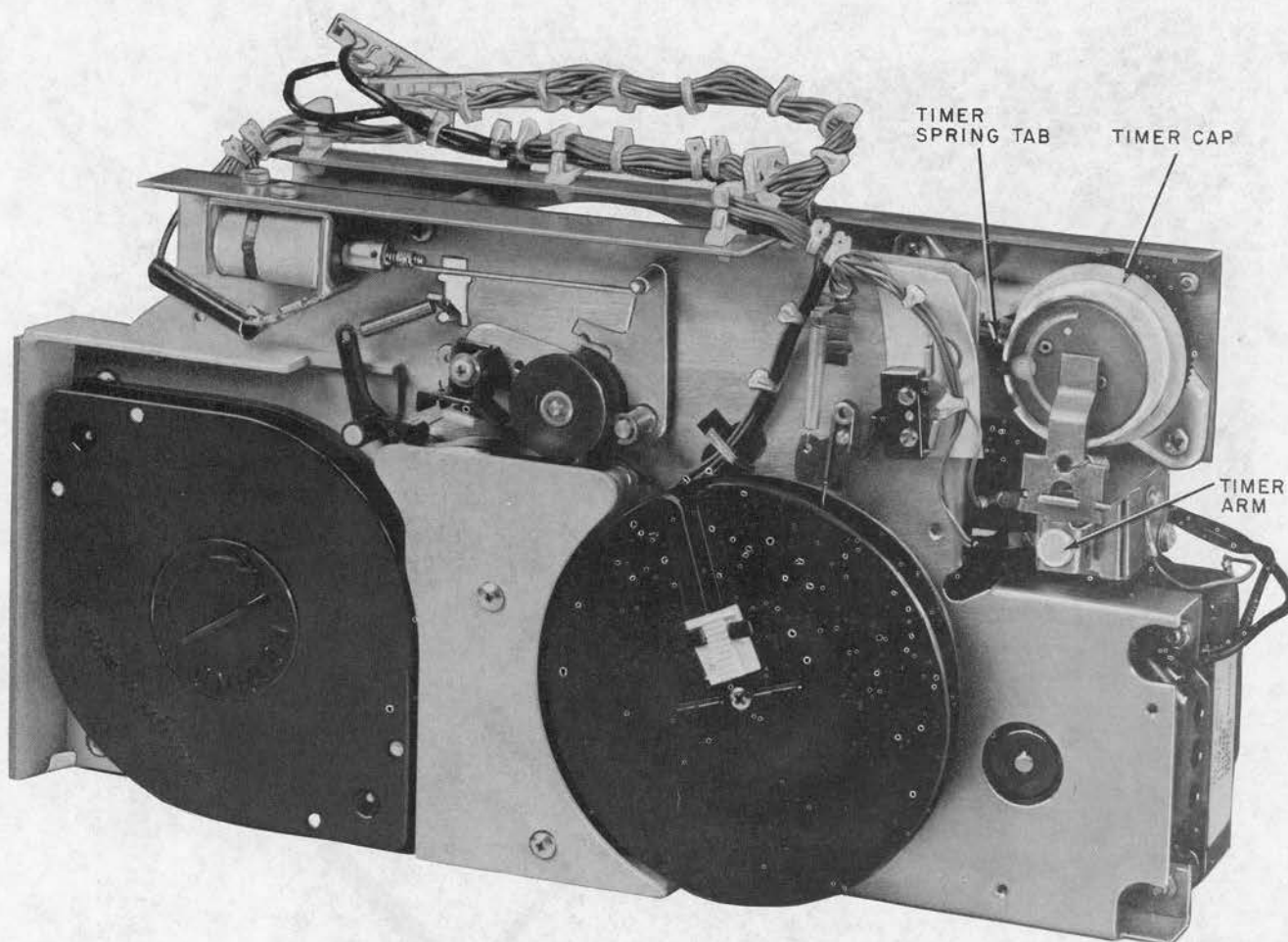


Fig. 11—KS-19245, List 21 Recorder (Message Side)

(c) IN-USE lamp lights, and AUTO-ANS lamp extinguishes, indicating incoming call.

(d) A dc termination which trips ringing is automatically placed across line.

(e) Recorded announcement is reproduced on line.

(f) In installations where the central office provides a momentary interruption of central office battery accompanying calling party hang-up, the calling party control circuit will disconnect the set from the line. List 13 set has CPC interrupt time options which are selected and set depending on the type of central office.

(g) At end of announcement, set disconnects from line.

4.07 *Forward or Rewind:*

(1) Set function selector to PLAY.

(a) To rewind, operate forward-rewind level to the left.

(b) To advance tape, operate forward-rewind lever to the right.

4.08 *Erase Message:*

(1) Set function selector to ERASE.

(a) **Rewind erase:** Operate forward-rewind selector to the left.

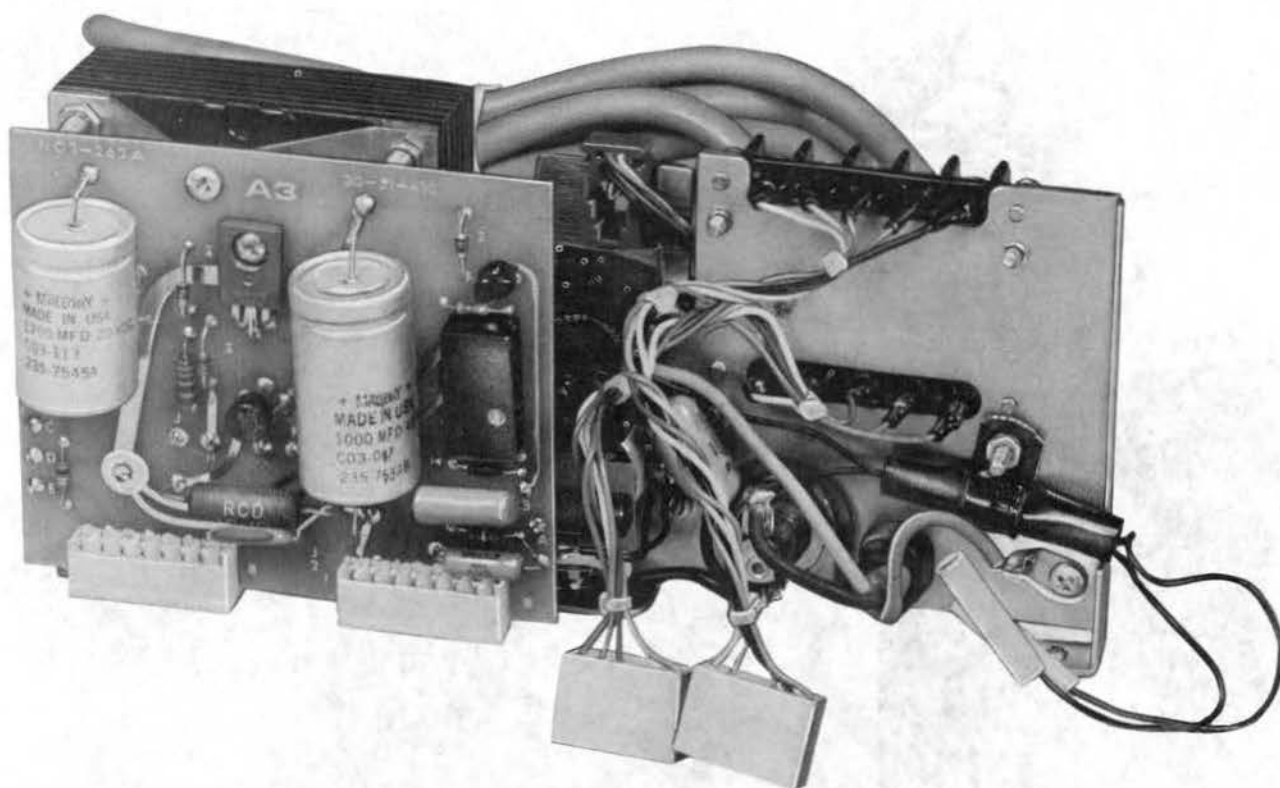


Fig. 12—KS-19245, List 19 Power Supply

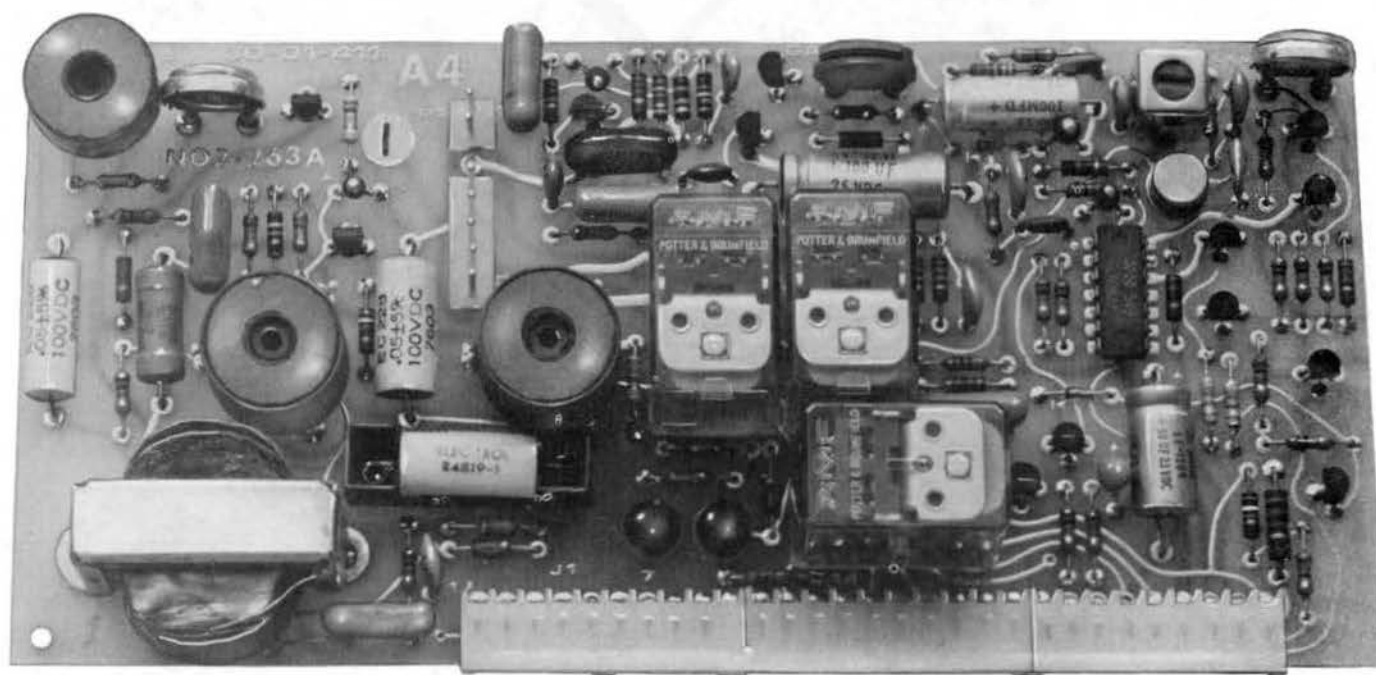


Fig. 13—KS-19245, List 15 Amplifier Board

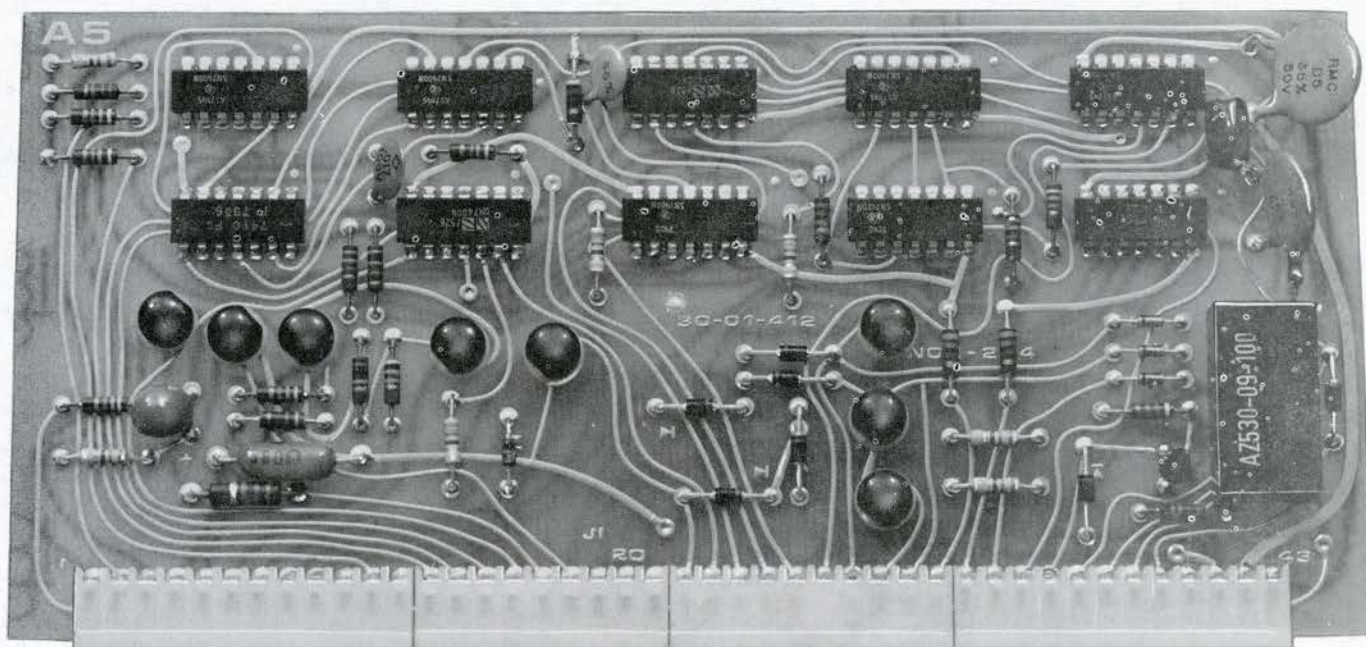


Fig. 14—KS-19245, List 16 Deck Control Board

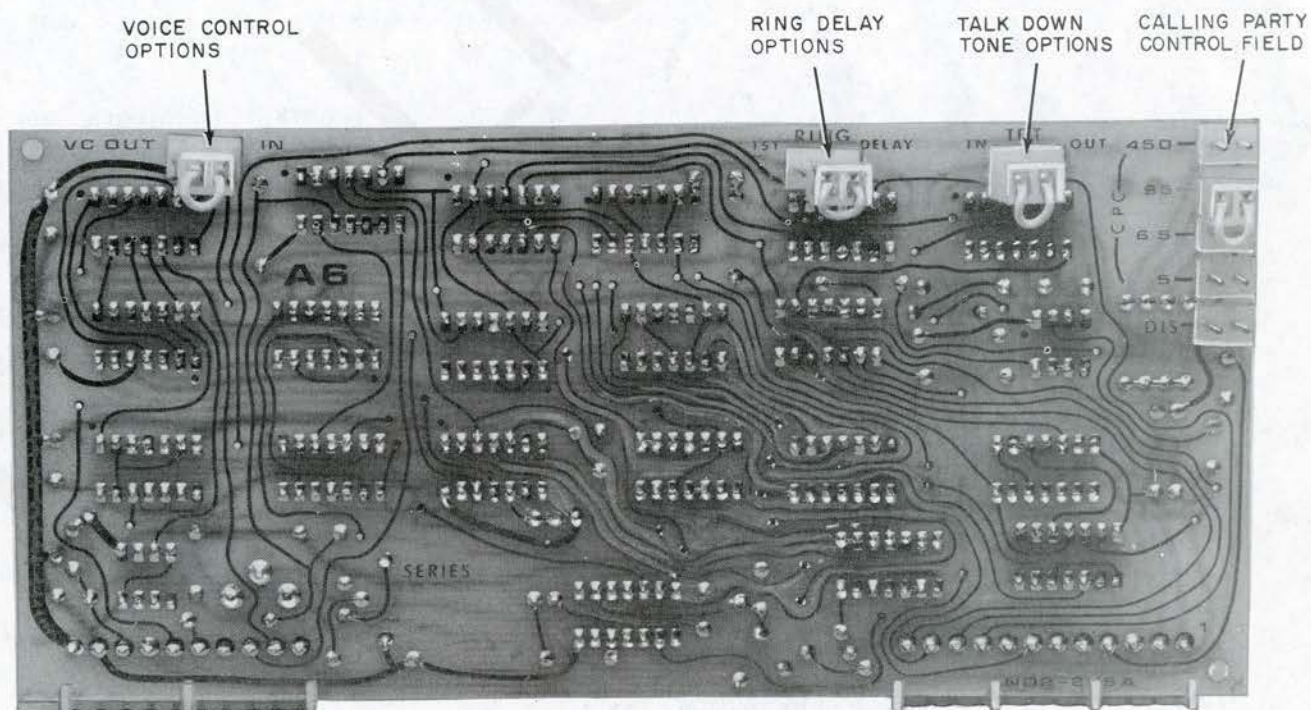


Fig. 15—KS-19245, List 17 Logic Board



Fig. 16—KS-19245, List 8 Foot Switch

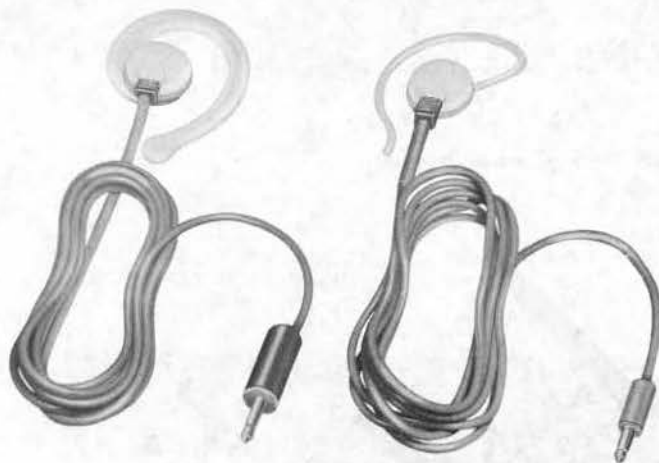


Fig. 17—KS-19245, List 9 Earphones

- (b) **Forward erase:** Operate forward-rewind selector to the right.

4.09 Message Playback (Using Handset):

- (1) Set function selector to PLAY.
- (2) Rewind tape as outlined in 4.07.
- (3) Lift handset; depress and hold handset button.

4.10 Message Playback (Using Speaker):

- (1) Set function selector to PLAY.
- (2) Rewind tape as outlined in 4.07.

- (3) Pull out SPEAKER control knob.
- (4) Rotate SPEAKER control knob to adjust volume.

4.11 Message Indicator Dial:

- (a) Message indicator dial, is used to locate position of a particular message or to determine amount of tape available for message recording.

4.12 Turning Telephone Answering Set Off:

- (1) Set the function selector to OFF.
 - (a) Set will be disconnected from both ac power and telephone line.

4.13 Cartridge Installation:

- (1) Set function selector to OFF.
- (2) Place cartridge (Fig. 9) over cartridge lock pins and hub (Fig. 22) and press down into place.
- (3) Slide tape end (Fig. 9) through tape slot (Fig. 22) and into slot of take-up reel and lock into place.

4.14 Cartridge Removal (Fig. 22):

- (1) Rewind tape into cartridge (0 setting on tape indicator). Refer to 4.07.
- (2) Set function selector to OFF.
- (3) Remove tape end from take-up reel by depressing and backing out of slot.
- (4) Turn cartridge hub clockwise by hand to rewind remaining tape into cartridge.
- (5) Grasp cartridge and lift up.

ACCESSORIES

4.15 Foot Switch KS-19245, List 8 (Fig. 16):

- (1) Insert foot switch plug into foot switch receptacle (List 1, Fig. 1; List 13, Fig. 2).

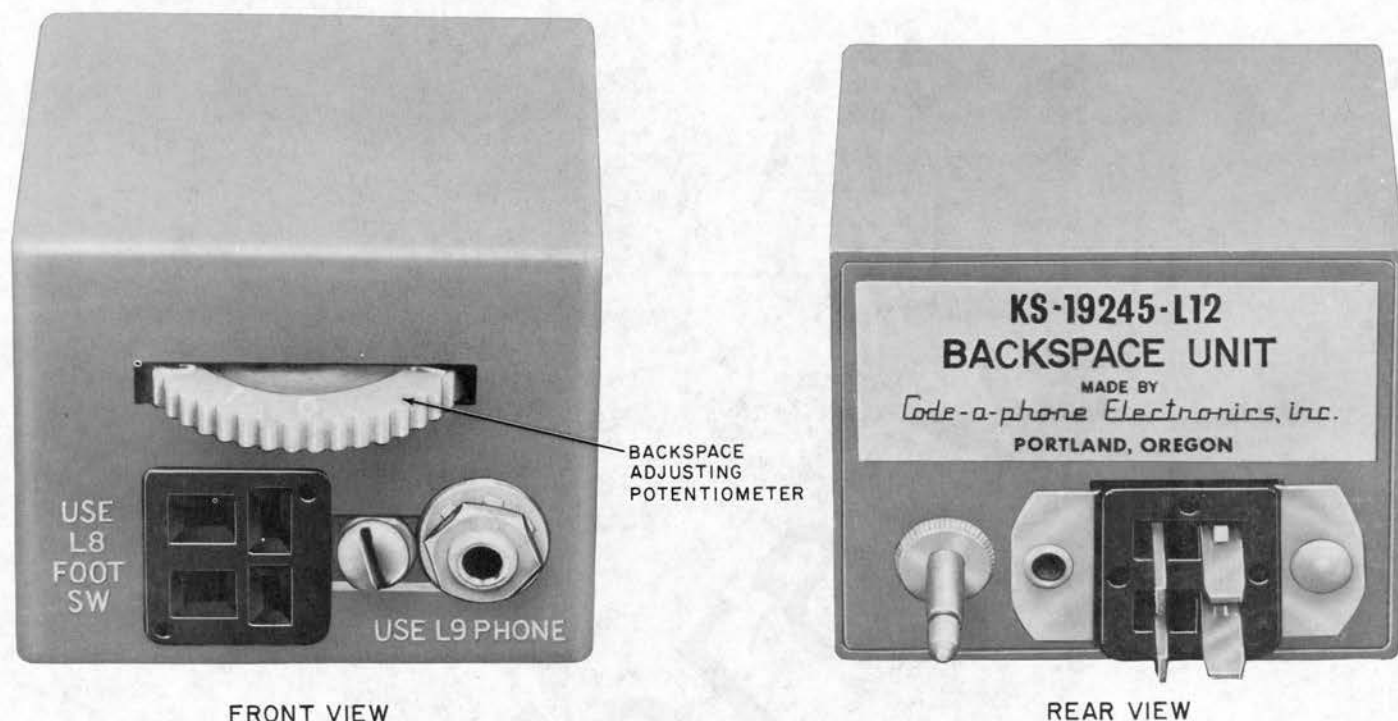


Fig. 18—KS-19245, List 12 Backspace Unit

- (2) Set function selector to PLAY.
- (3) For playback, depress foot switch to first position.
- (4) For rewind, depress foot switch all the way down.

4.16 Earphone KS-19245, List 9 (Fig. 17):

- (a) To monitor recorded message with earphone for transcribing in foot switch operation:
 - (1) Set function selector to PLAY.
 - (2) Insert foot switch plug into foot switch receptacle (List 1, Fig. 1; List 13, Fig. 2).
 - (3) Plug earphone into earphone jack (List 1, Fig. 1; List 13, Fig. 2).
 - (4) Operate foot switch as described in 4.15.
 - (5) Rotate SPEAKER control knob to adjust volume.

4.17 Backspace Unit KS-19245, List 12 (Fig. 18):

- (1) Set function selector to PLAY.
- (2) Push in speaker control knob.
- (3) Insert backspace unit into receptacle on answering set (List 1, Fig. 1; List 13, Fig. 2).
- (4) Insert foot switch plug into foot switch receptacle on backspace unit (Fig. 24).
- (5) Insert earphone into earphone jack on backspace unit (Fig. 24).
- (6) Adjust backspace control on backspace unit for automatic backspace of desired interval.

Note: Maximum backspace interval equivalent to approximately a dozen words may be obtained with the backspace control in maximum setting. Automatic backspace may be disabled by turning backspace control to its zero position.

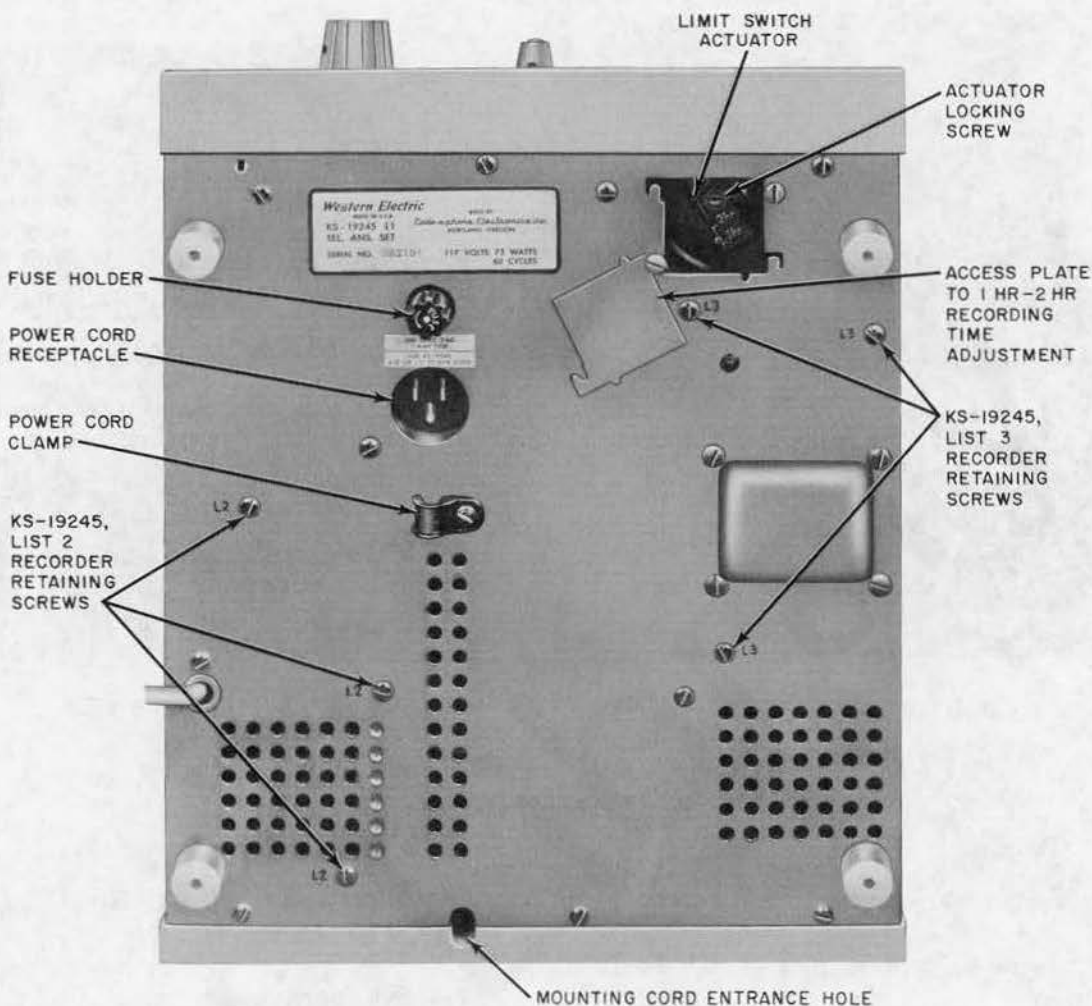


Fig. 19—KS-19245, List 1 Telephone Set—Bottom View

5. OPTIONS



Handle set components with care at all times to avoid damage.



This option may be employed only when other means are available for disconnecting the set at the end of a call or when provisions are made for turning the function selector switch to the off position at the end of the recording.

5.01 Voice Control Disable:

(a) **KS-19245, List 1** - Solder a strap between the terminals identified with a blue dot on the KS-19245, List 5 amplifier board (Fig. 8).

(b) **KS-19245, List 13** - Move VC plug from IN to OUT on A6 logic board (Fig. 15).

5.02 Calling Party Control:

(a) **KS-19245, List 1** - To disable calling party control, solder strap between terminals identified by a green dot on the KS-19245, List 5 amplifier board (Fig. 8).

(b) **KS-19245, List 13** - Move plug to required position per Table B (Fig. 15).

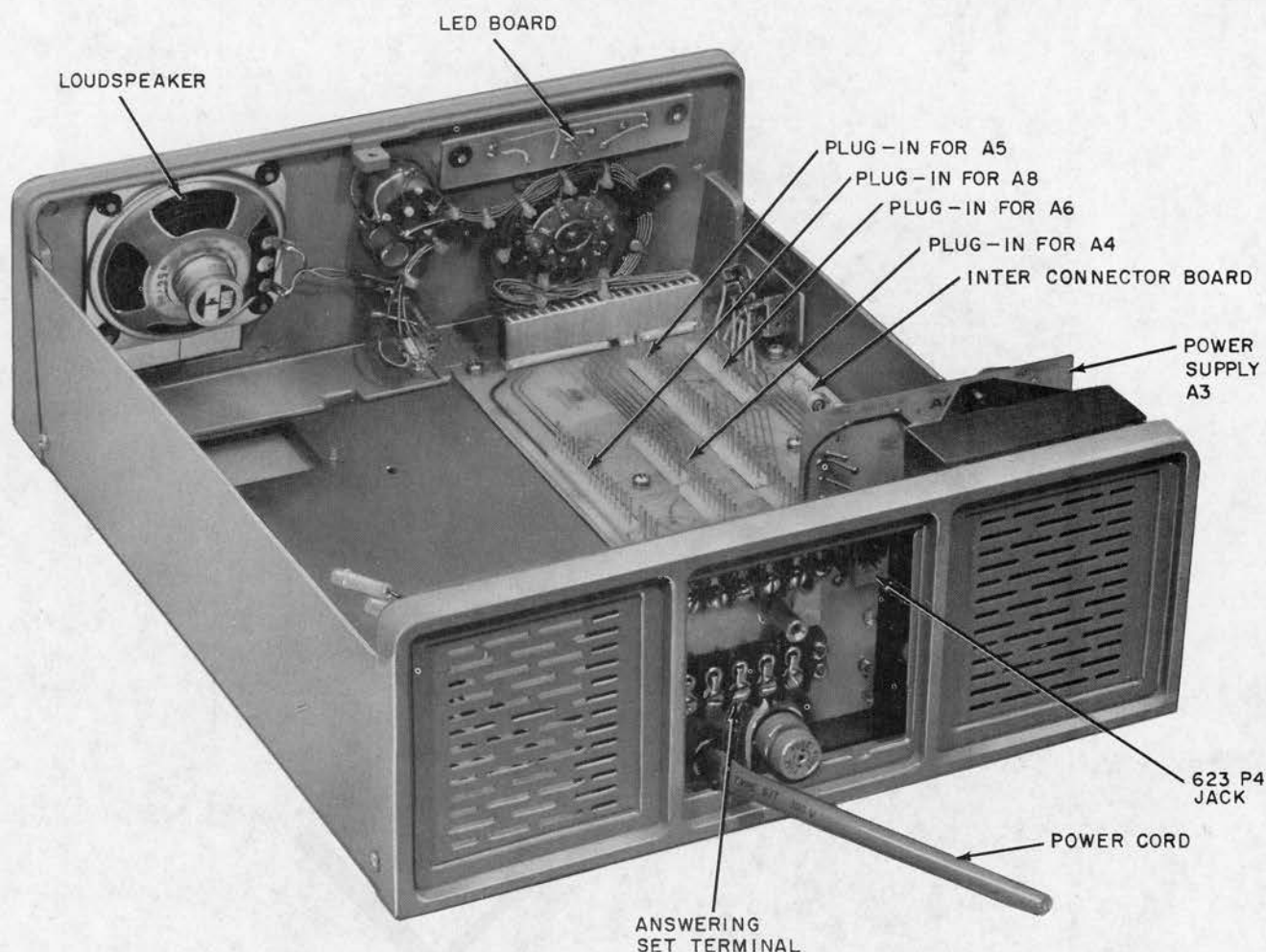


Fig. 20—KS-19245, List 13 Telephone Set—Cover and Components Removed



Calling party control is provided on this set to disconnect when momentary interruption of line current occurs due to calling party disconnect. CPC options (List 13 only) are used to hold set on line during momentary interruptions due to CO or PBX switching (Table B).

5.03 Speak-up (Talk-down) Tone Disable:

- (a) **KS-19245, List 1** - Remove the strap between the terminals identified by a yellow dot on the KS-19245, List 5 amplifier board (Fig. 8).
- (b) **KS-19245, List 13** - Move TDT plug from IN to OUT on A6 logic board (Fig. 15).



Use of this option does not affect the one second start and disconnect beep tones.

5.04 Ring Delay Option:

- (a) **KS-19245, List 13** - Move RING plug from 1ST to DELAY on A6 logic board (Fig. 15).

5.05 Message Recording Capacity Option:

Caution: Damage to the message tape and its mechanism will result if the message tape end is not properly secured in the snap retainer of the take-up reel before operating set.

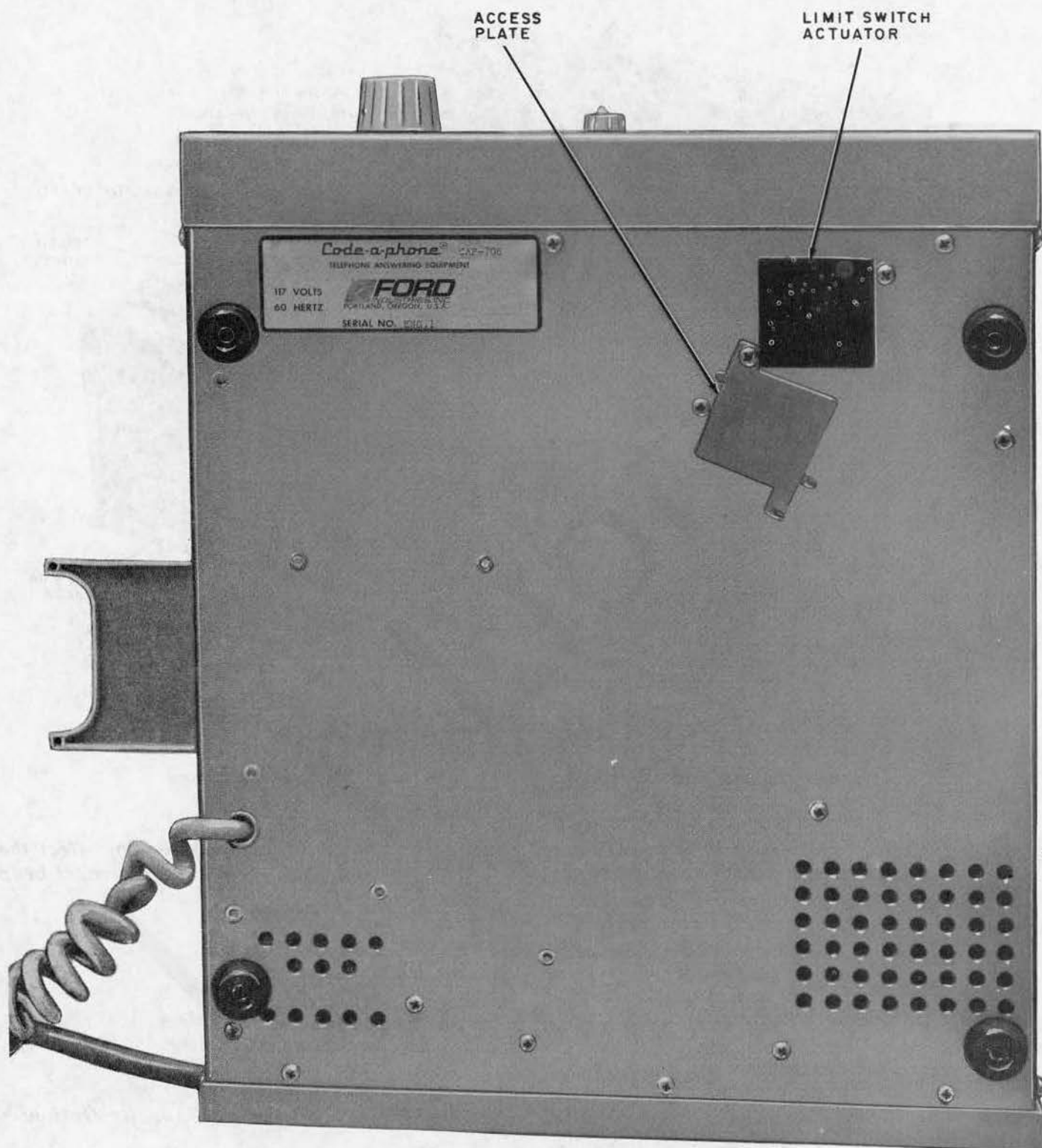


Fig. 21—KS-19245, List 13 Telephone Answering Set—Bottom View

- (a) Adjust message recording capacity (List 1, Fig. 19; List 13, Fig. 21).

Note: The set is shipped with message recording capacity adjusted for 1 hour. To adjust to maximum recording capacity of 2 hours, proceed as follows:

- (1) Insert plug of power cord into ac outlet.
- (2) Run the set in rewind to obtain an elapsed message indicator dial reading of 0 (set will stop automatically).

Caution: *Before proceeding with any further adjustments or connections, remove power cord from ac outlet.*

- (3) Remove access plate:
 - (a) Loosen two access plate mounting screws.
 - (b) Move plate aside.

- (4) Adjust limit switch actuator (List 1 set only, Fig. 19):

- (a) Loosen actuator locking screw.
- (b) Slide actuator to 2hr position.
- (c) Tighten actuator locking screw.

- (5) Adjust limit switch actuator (List 13 set only, Fig. 21):

- (a) Slide actuator to 2hr position. A detent will lock actuator in position (Fig. 21).

- (6) Replace access plate.

5.06 *Announcement Recording Time Option:*

- (a) Adjust announcement recording time.

Note: The set is shipped with an announcement setting of 30 seconds. Announcement time may be adjusted for 15, 30, 45, 60, 75, 90,

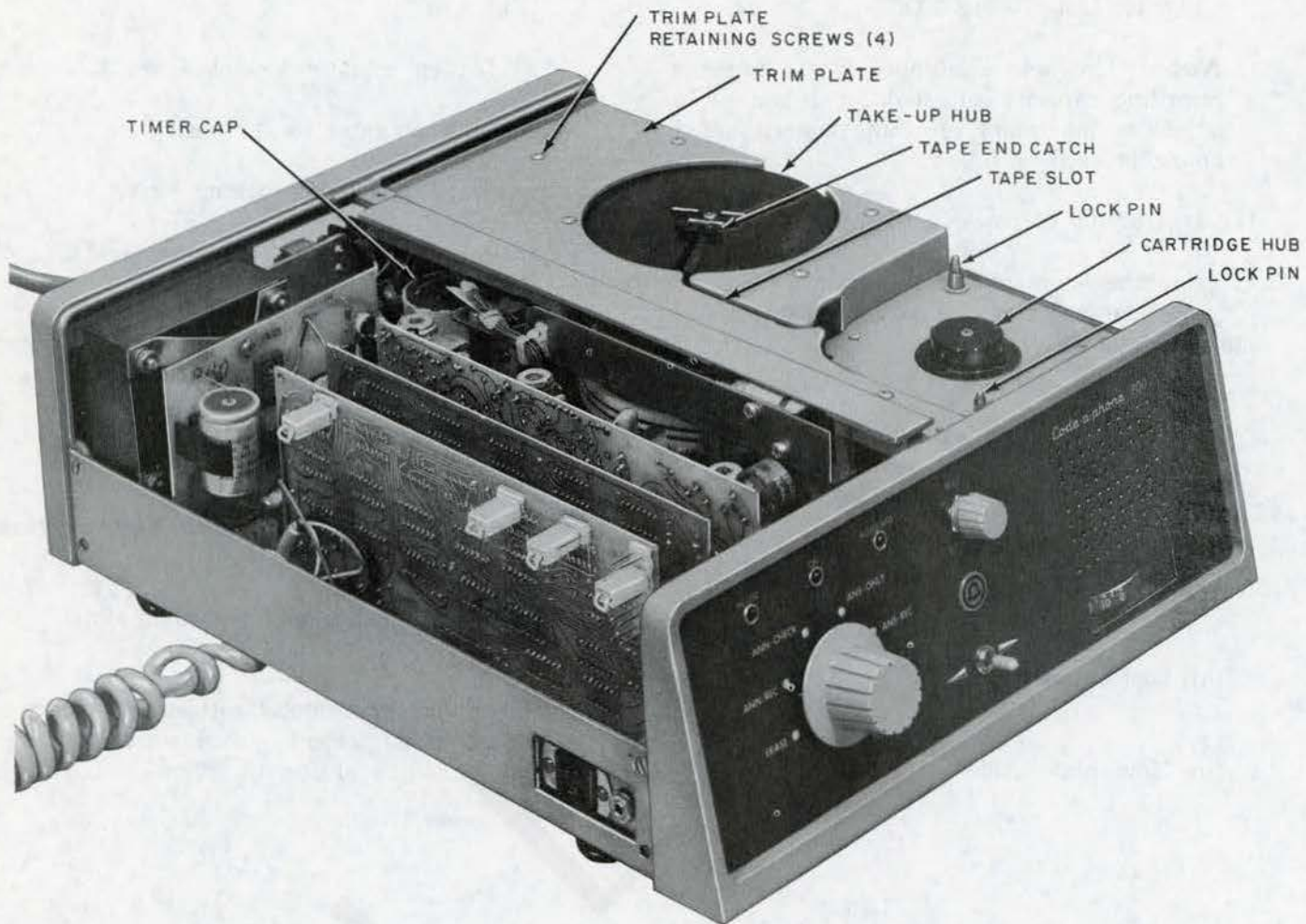


Fig. 22—KS-19245, List 13 Telephone Answering Set—Cover Removed

120, 150, or 180 seconds. To change setting proceed as follows:

- (1) Remove top cover (List 1, Fig. 1; List 13, Fig. 2):

- (a) Remove four cover retaining screws.
- (b) Remove cover.

- (2) List 1 set only:

- (a) Loosen amplifier board retainers (2) (Fig. 23).
- (b) Remove List 4 amplifier board.

- (3) List 13 set only:

- (a) Remove the four trimplate retaining screws (Fig. 22).
- (b) Remove trimplate.

- (4) Release timer cap by carefully depressing timer arm (List 1, Fig. 4; List 13, Fig. 11).

Caution: Do not rotate recorder motor or tape reels by hand.

- (5) Adjust recording capacity by carefully lifting tab of timer spring from slot and rotate to position of desired interval (List 1, Fig. 4; List 13, Fig. 11).

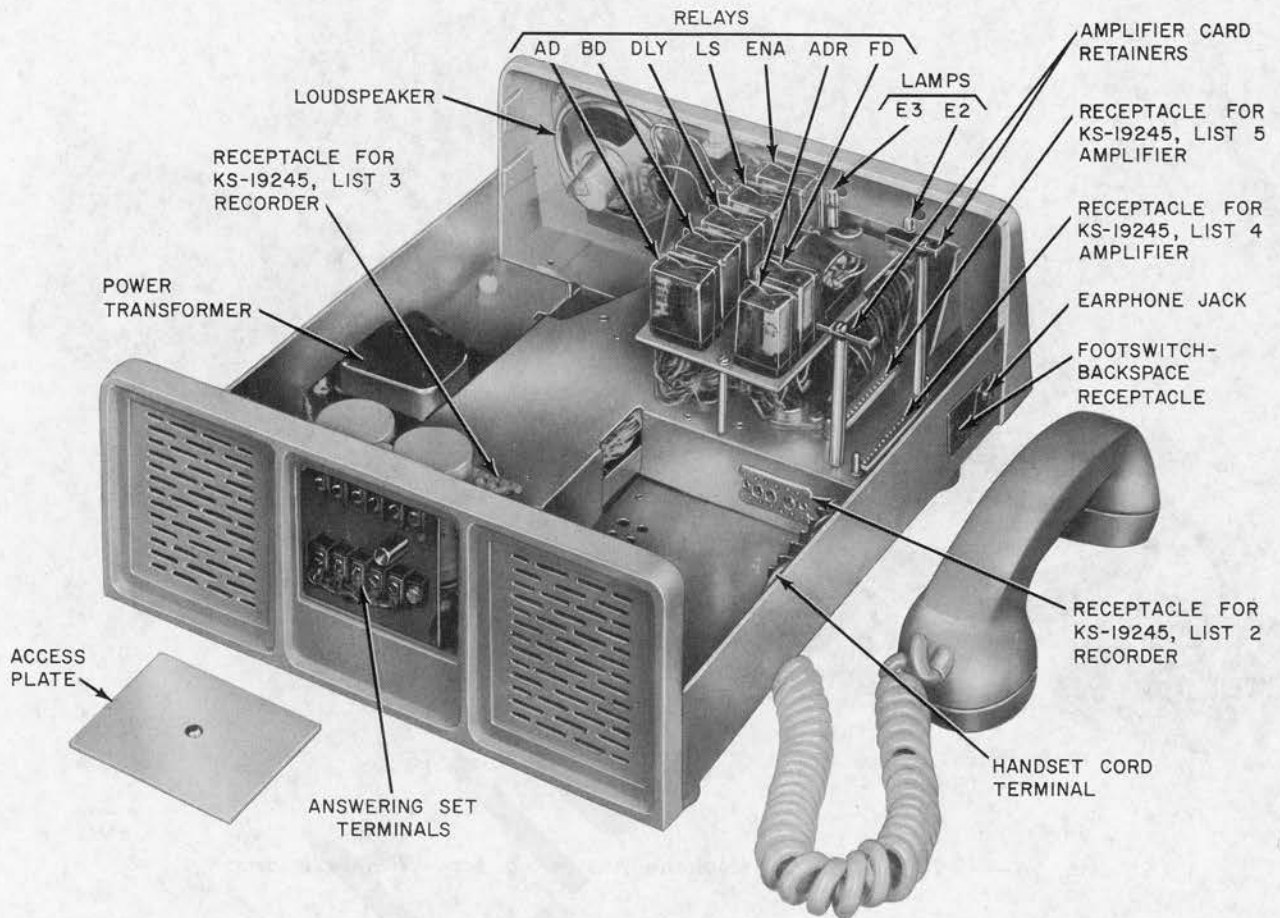


Fig. 23—KS-19245, List 1 Telephone Answering Set—Cover and Components Removed

Caution: Do not lift tab over raised portion of timer cap. To increase interval, rotate tab clockwise. To reduce interval, rotate tab counterclockwise.

- (6) **List 1 only:** Replace List 4 amplifier board and tighten retainers.
- (7) **List 13 only:** Replace trimplate and secure with retaining screws.
- (8) Replace top cover.

Caution: Do not use options listed in Part 5 without proper authorization.

6. INSTALLATION

6.01 Location:

- (a) Locate telephone answering set where it will be convenient for customer.

- (b) Do not place set where it will be exposed to weather or extreme heat. The supporting surface should be able to support more than 31 pounds.

6.02 Power:

- (a) The KS-19245, Lists 1 and 13 set is designed to operate on 110/125-volt ac 60 Hz power source.

Caution: In no case should the answering set be connected to **DIRECT CURRENT**. This would result in serious damage to the answering set.

- (b) If direct current is the only available power source, a KS-15662, List 1 inverter must be used. Installation of this inverter is described in Section 514-112-100.



Fig. 24—KS-19245, List 1 Telephone Answering Set—With Accessories

(c) A 1-ampere (3AG1) fuse is provided in this answering set for protection (List 1, Fig. 19; List 13, Fig. 20).

(d) A List 11 power cord (shipped loose) connects to receptacle on List 1 set only (Fig. 19). List 13 set power cord is wired to set (Fig. 20).

(e) Customer must provide and maintain a standard ac outlet for operation of the Lists 1 and 13 telephone answering set. Outlet should not be controlled by a switch.

(f) In locations where only a two prong ac outlet is available, a power cord adapter, with its grounding lead connected to a ground, must be used (refer to Section 167-400-210).

6.03 Connections, Line:

(1) Remove terminal board access plate located at the rear of the answering set (Fig. 20 or 23).

(2) Insert suitable mounting cord through hole provided in base of answering set (List 1 only, Fig. 19).

(3) Make connections for type of service required as shown in Table A (List 1 only).

(4) Insert a D4BU mounting cord (ordered separately) into the 623P4 jack at rear of set (List 13 only, Fig. 20).

(5) Replace access plate.

6.04 Test at Time of Installation:

(a) Insert the power cord into ac outlet. Refer to Part 4 and check the following:

(1) Announcement recording and erasure.

(2) Announcement check:

(a) With handset.

(b) With speaker.

(3) Automatic answer - ANS and REC:

- (a) Automatic answer ready lamp.
- (b) Ring-up.
- (c) In-use lamp.
- (d) Announcement monitoring in speaker.
- (e) Transfer beep tone.
- (f) Message monitoring in speaker.
- (g) Talk-down tone.
- (h) Voice control—timeout.
- (i) Disconnect beep tone.

(4) Automatic answer - answer only:

- (a) Ring-up.
- (b) Announcement monitoring in speaker.
- (c) Disconnect at end of announcement.

(5) Message playback:

- (a) With handset.
- (b) With speaker.
- (c) With earphone (optional accessory).

(6) Fast forward and rewind of message tape.

(7) Erase message.

(8) Foot switch (optional accessory).

(9) Backspace unit (optional accessory).

(b) The set should now be ready for operation.

Instruct the subscriber of proper operation of set and accessories (Part 4).

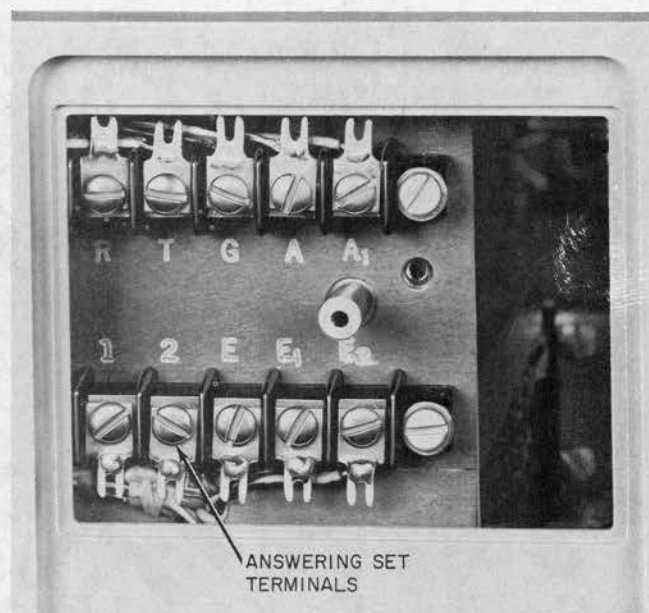


Fig. 25—KS-19245, List 1 Telephone Answering Set—Terminal Board

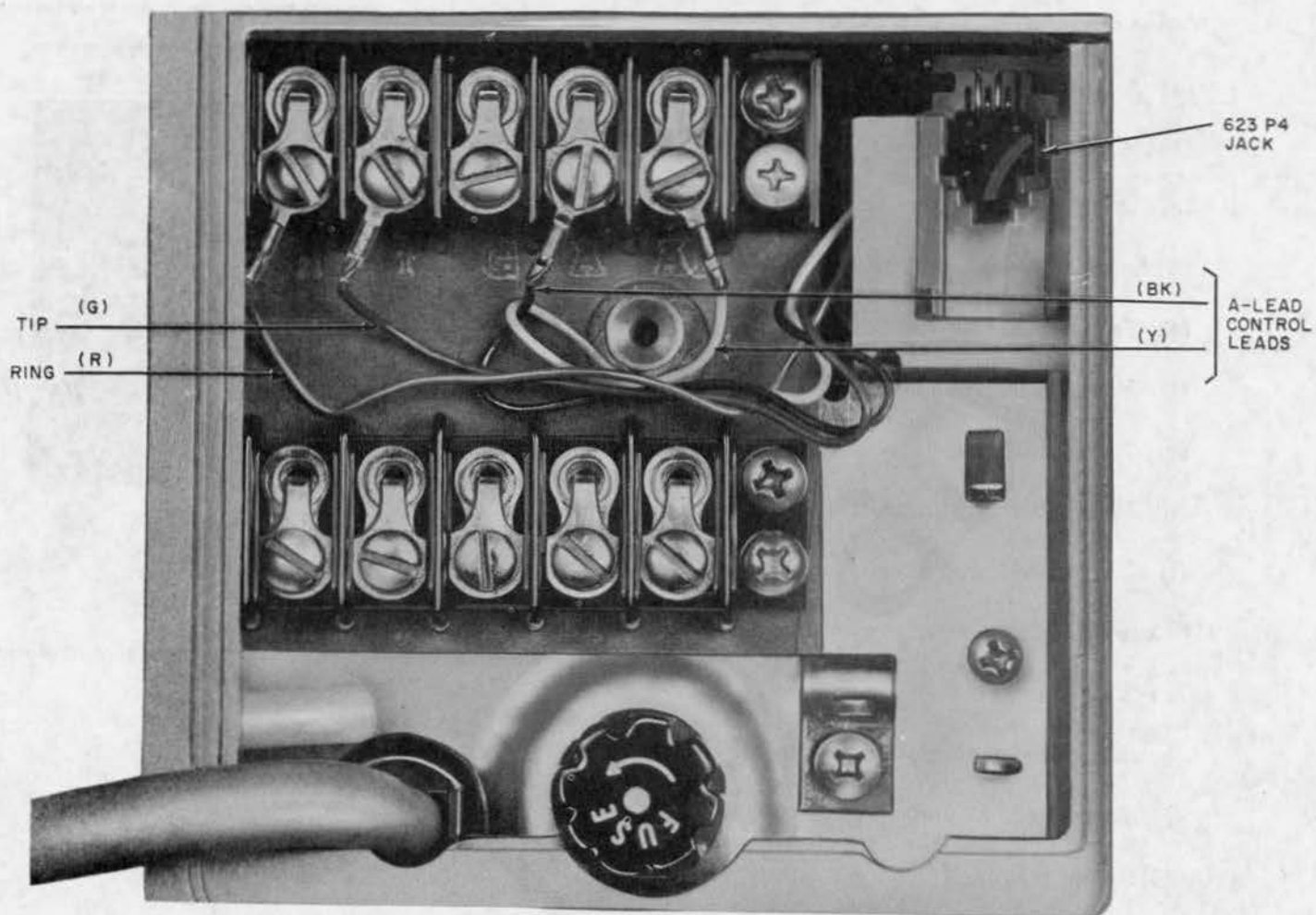


Fig. 26—KS-19245, List 13 Telephone Answering Set—Terminal Board

TABLE A
MOUNTING CORD CONNECTIONS

CORD CONDUCTOR COLOR	AT CONNECTING BLOCK ON TEL ANS SET	SIDE OF LINE WIRE TO WHICH CORD CONDUCTOR IS TERMINATED		
		INDIVIDUAL, PBX, OR BRIDGED SERVICE†	2-PARTY SELECTIVE OR MESSAGE RATE SERVICE*	
			RING PARTY	TIP PARTY
Yellow	R	Ring	Ring	Tip
Green	T	Tip	Tip	Ring
Yellow	G	NC	Ground	Ground
Black	B	NC	NC	NC

* Remove strap between T and G on telephone answering set connecting block and place local ground on G.

† Remove local ground and strap T and G punchings on telephone answering set connecting block.

TABLE B
KS-19245, LIST 13 CALLING PARTY CONTROL SELECTIONS

PLUG POSITION CPC FIELD (A6)	FUNCTION	TYPE CENTRAL OFFICE AND PBX
450	Set disconnects when line current is interrupted for approximately 450 milliseconds (350 to 600 ms)	Lines originating in No. 1 ESS and No. 2 ESS, or 812 PBX.
95	Set disconnects when line current is interrupted for approximately 95 milliseconds (50 to 140 ms)	Lines originating in No. 5 Crossbar Centrex 770, 800, 801, or 805 PBX.
6.5	Set disconnects when line current is interrupted for approximately 6.5 milliseconds (5 to 8 ms)	Standard setting. Lines originating in all electromechanical switching systems except those specified above.
0.5	Set disconnects when line current is interrupted for approximately 0.5 milliseconds.	Not normally used.
DIS	Disables Calling Party Control option. Set will not disconnect when line current is interrupted.	Use only when special arrangements do not provide line current. Disconnect arrangements must be provided.

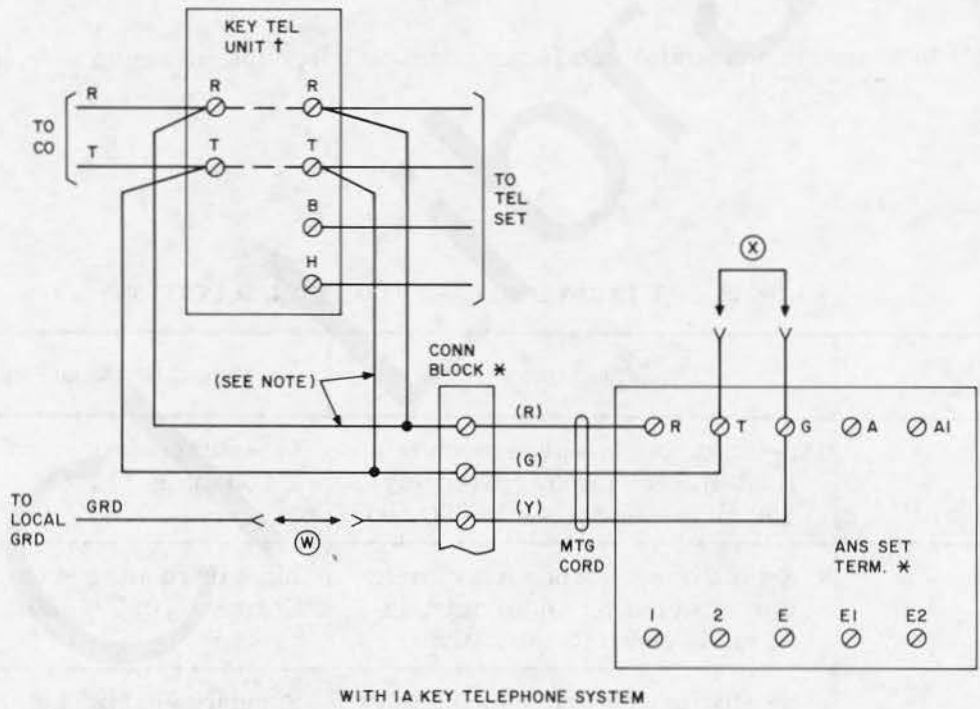
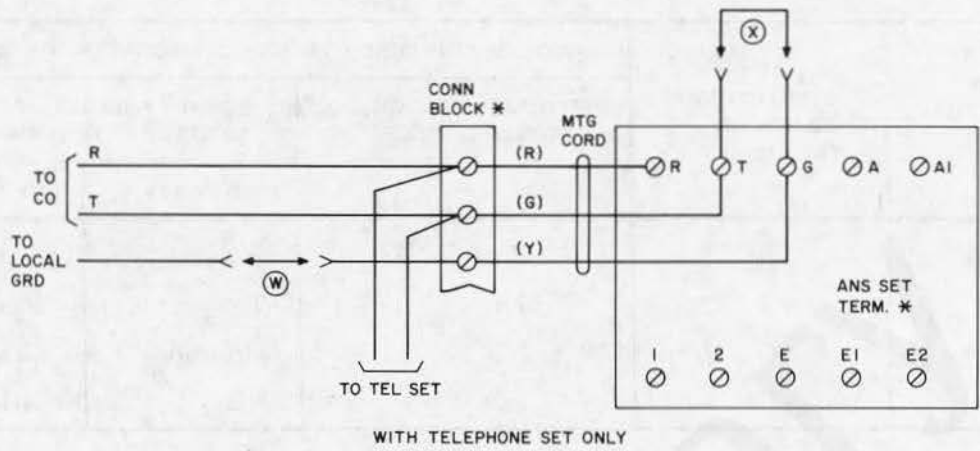


Fig. 27—KS-19245, List 1 Telephone Answering Set—Connections (Sheet 1 of 3)

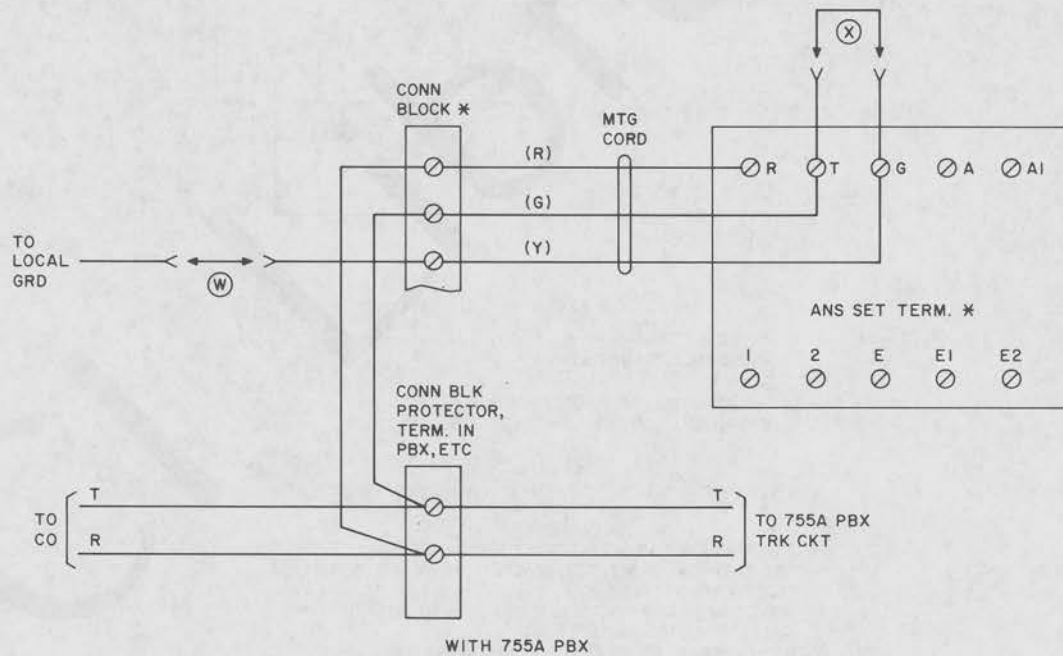
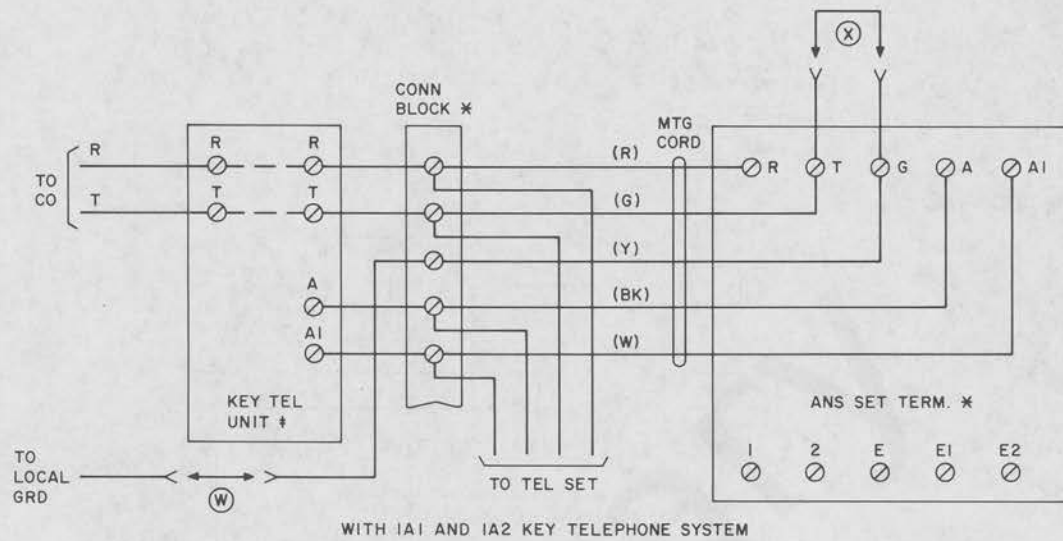
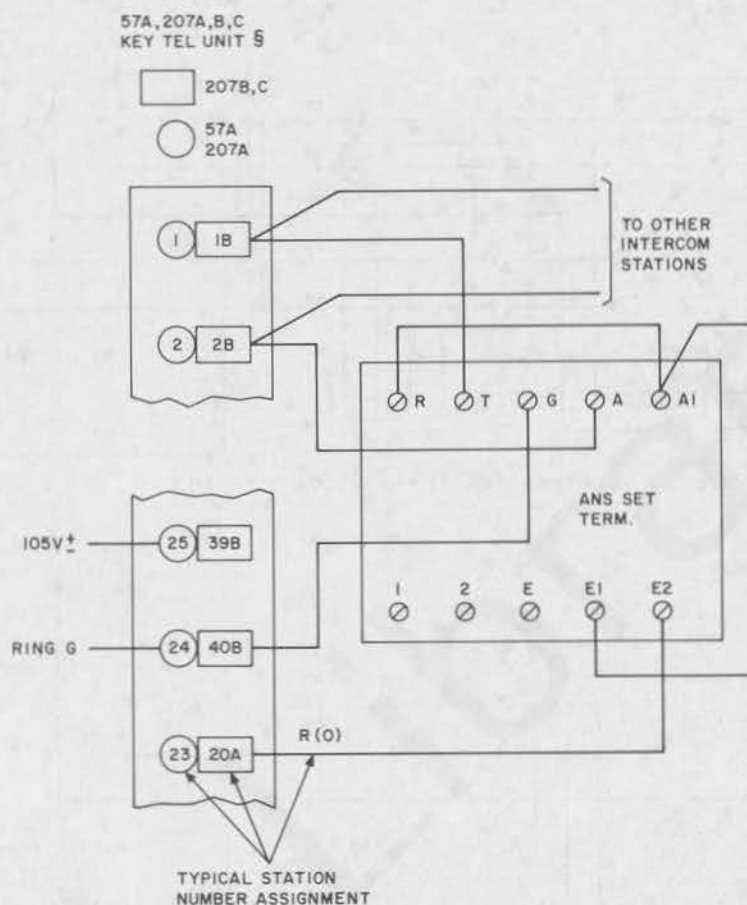


Fig. 27—KS-19245, List 1 Telephone Answering Set—Connections (Sheet 2 of 3)



WITH DIAL SELECTIVE INTERCOMMUNICATING
CIRCUIT, 1A, 1A1, OR 1A2 KEY TELEPHONE SYSTEMS

NOTE:

ANSWER SET MAY BE CONNECTED ON EITHER SIDE OF KTU.

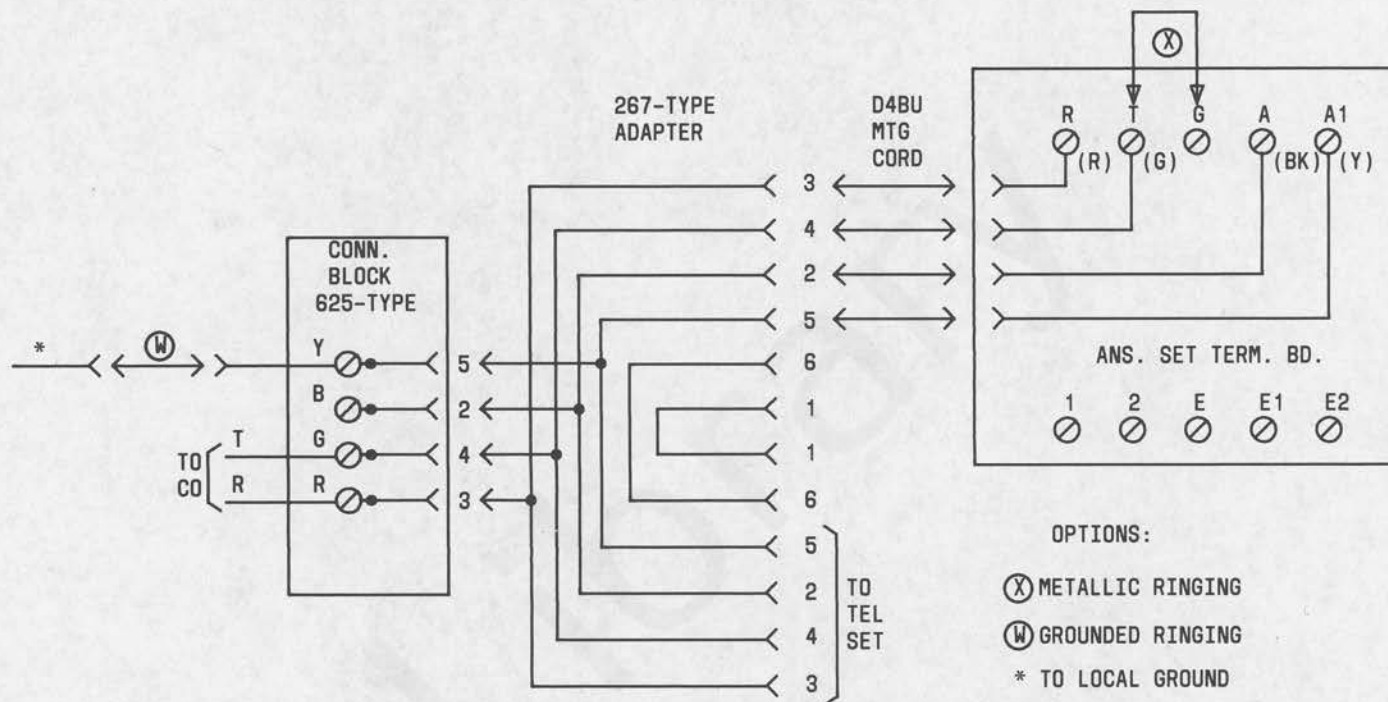
LEGEND:

- * SEE TABLE A FOR MOUNTING CORD CONNECTIONS.
- † FOR TERMINAL NUMBERS, SEE SECTION ON 1A KEY TELEPHONE SYSTEMS.
- ‡ FOR TERMINAL NUMBERS, SEE SECTION ON 1A1 AND 1A2 KEY TELEPHONE SYSTEMS.
- § MAY BE ADAPTED TO KEY TELEPHONE SYSTEM 6A WHEN RINGING POWER SUPPLY IS PROVIDED.

OPTIONS:

- (X) METALLIC RINGING
- (W) GROUNDED RINGING

Fig. 27—KS-19245, List 1 Telephone Answering Set—Connections (Sheet 3 of 3)



LIST 13 SET - MODULAR CONNECTIONS

NOTE:

LIST 13 SET IS WIRED FOR BRIDGED RINGING AND A-LEAD CONTROL. IF A-LEAD CONTROL IS NOT REQUIRED, THE BLACK AND YELLOW LEADS MUST BE REMOVED FROM THE TERMINALS, INSULATED AND STORED. FOR GROUNDED RINGING, INSULATE AND STORE BLACK (BK) LEAD, CONNECT YELLOW (Y) LEAD TO TERMINAL G AND REMOVE STRAP BETWEEN TERMINALS T AND G.

Fig. 28—KS-19245, List 13 Telephone Answering Set—Connections (Modular)