

COIN TELEPHONE SHELF  
KS-19267  
IDENTIFICATION AND INSTALLATION

ACOUSTIC ALUMINUM



PLEXIGLASS

CLEAR ACRYLIC



TRANSLUCENT METHACRYLATE



BIRCH



WALNUT



MAHOGANY



FRUITWOOD



PORCELAIN ENAMEL



MEDIUM GRAY



LIGHT BLUE



DARK GRAY

WOODGRAIN

Fig. 1 — Coin Telephone Shelf KS-19267 and Finishes Available

## 1. GENERAL

**1.01** This section is reissued to:

- Add information on new KS-19267, List 11 directory rack.
- Add information on new KS-19267, List 13 cover assembly.
- Revise illustrations to agree with new design.

Since this reissue covers a general revision, arrows ordinarily used to indicate changes have been omitted.

## 2. IDENTIFICATION

**2.01** The KS-19267 coin telephone shelf (Fig. 1) is a wall mounted unit for indoor use only. It may be installed singly or in multiple and mounts either the 200-type coin collector or 1A-type coin telephone. If the 200-type coin collector is used, a KS-19267, List 12 subset mounting should be used to mount the required subscriber set.

**2.02** The basic shelf assembly includes:

- Collector Mounting Plate
- Shelf
- Metal Framework
- Backboard Assembly

**2.03** The desired panels, directory rack, and other optional items are added to the basic shelf assembly. The basic shelf assembly is ordered by list number according to its proposed installation, either single or multiple. (See Table A.)

**2.04** The shelf features replaceable back and side panels. These panels are available in a variety of finishes. (See Fig. 1 and Table A.)

**2.05** A KS-19267, List 11 directory rack (Fig. 2) is available and should be ordered separately.

**2.06** A KS-19267, List 12 subscriber set mounting (Fig. 3) is available for mounting the subset when a 200-type coin collector is used.

**2.07** A KS-19267, List 13 cover assembly (Fig. 4) is available for mounting beneath the shelf to cover the subscriber set when a directory rack is not used.

**2.08** Illumination, if required, is furnished by a KS-19322, List 1 sign. This sign must be ordered separately. It may be mounted directly to the wall surface above the coin telephone shelf. See section entitled Public Telephone Signs for additional information on this sign.

**2.09** A KS-19267, List 10 auxiliary backboard (Fig. 5) is available for mounting a KS-19322 lighted telephone sign as a unit with the coin telephone shelf. This backboard is for use only when conditions prevent mounting of the sign to the wall.

## 3. INSTALLATION

**3.01** Be sure location specified on service order corresponds to customer's wishes. Also verify that the following conditions are met:

- Location is free of hazards.
- Shelf will be easily accessible to the public.
- If lighted sign is to be installed, be sure 3-wire grounded outlet is provided.
- Location will provide a secure mounting for shelf.

**Note:** Test to see that ground is present at receptacle.

**3.02** Install shelf backboard according to procedures outlined in section entitled Backboards, Installation. Bottom edge of backboard should be 35-1/4 inches from floor.

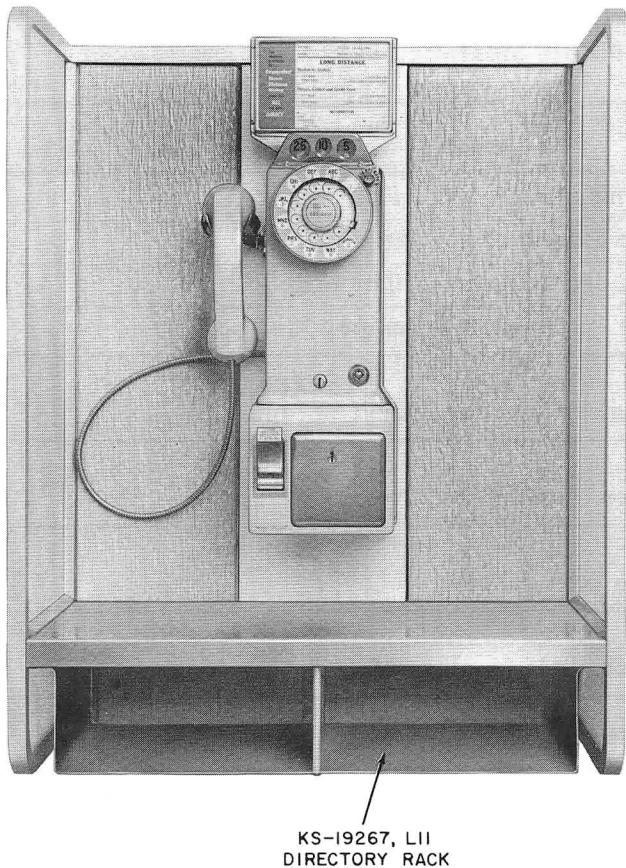
**3.03** If KS-19322 lighted sign is used, install according to procedures outlined in section entitled Public Telephone Signs, Illuminated Types.

**TABLE A**  
**KS-19267 COIN TELEPHONE SHELF**

LIST NUMBER	DESCRIPTION	REMARKS	
1	Basic Shelf Assembly	For single installation	
2		For multiple installation — left end	
3		For multiple installation — right end	
4		For multiple installation — center	
10*	Auxiliary Backboard	To mount lighted sign and shelf as one unit	
11	Directory Rack	Mounts under shelf, if required	
12	Mounting, Sub- scriber Set	For 200-type coin collector	
13	Cover Assembly	Mounts under shelf in place of directory rack	
20	Panel, Side	Laminated	Birch grain
21			Walnut grain
22			Mahogany grain
23			Fruitwood grain
26		Porcelainized	Light blue
27			Medium gray
28			Dark gray
30	Panel, Back	Laminated	Birch grain
31			Walnut grain
32			Mahogany grain
33			Fruitwood grain
36		Porcelainized	Light blue
37			Medium gray
38			Dark gray
40	Panel, Side	Transparent	
41		Translucent	
45	Panel, Acoustic	Right side	
46		Left side	
47		Back	
48		Center	

**Note:** Item list numbers from 10 to 48 are ordered as required.

\* Use when conditions prevent secure mounting of sign to wall.



**Fig. 2 — KS-19267 Coin Telephone Shelf  
With KS-19267, List 11 Directory  
Rack**

**3.04** If KS-19267, List 10 auxiliary backboard is used, install according to procedures outlined in section entitled Backboards, Installation, with bottom edge of backboard 35-1/4 inches from floor. Secure shelf backboard to auxiliary backboard using nine 1/4-20 by 1-1/2 flathead screws (Fig. 5).

**Note:** Holes are not provided in the auxiliary backboard for mounting to the wall. At least nine fasteners are recommended and the wall will determine where the holes are drilled; however, the area between top of shelf and bottom of sign should be omitted for appearance.

**3.05** If electric power outlet for lighted sign is below shelf, run power cord from sign down through slot provided in backboard (Fig. 5)

and cover exposed cord between sign and shelf with KS-19322, List 16 wire shield.

**3.06** Install telephone wiring.

**3.07** Install B-196762-1 and -2 side columns on backboard using two No. 10-32 by 9/16 flathead screws in each column. *Where multiple units are installed, a B-196772 T-strip will be used to join two shelves together. This T-strip will replace the side column. T-strips are furnished as part of KS-19267, List 2 and List 4 shelf assemblies.*

**3.08** Place frame assembly against backboard so that side rails fit into side columns or T-strips, and top cross rail rests partially on top edge of backboard.

**3.09** Secure frame assembly to backboard using two 1/4-20 by 7/8 flathead screws and six 1/4-20 by 3/4 flathead screws.

**3.10** Secure collector mounting plate to backboard assembly using six 1/4-20 by 1-1/4 flathead screws.

**3.11** Insert side panels into curved columns. Place curved columns into slots on top and bottom edge of shelf assembly and secure with No. 10-32 by 3/4 hex socket head cap screws.

**3.12** Further secure curved columns at front of shelf using No. 8-32 by 7/16 fillister head screws.

**3.13** Loosen the No. 6-32 by 1/4 binding head screws in rails adjacent to side panels. Force rails tight against panels and tighten screws. This will prevent panels from rattling.

**3.14** Insert writing shelf in slots provided and slide toward backboard until almost seated.

**3.15** Insert back panels as shown and slide them all the way to the top. Slide writing shelf all the way in and release back panels so that they rest on top of back edge of writing shelf.

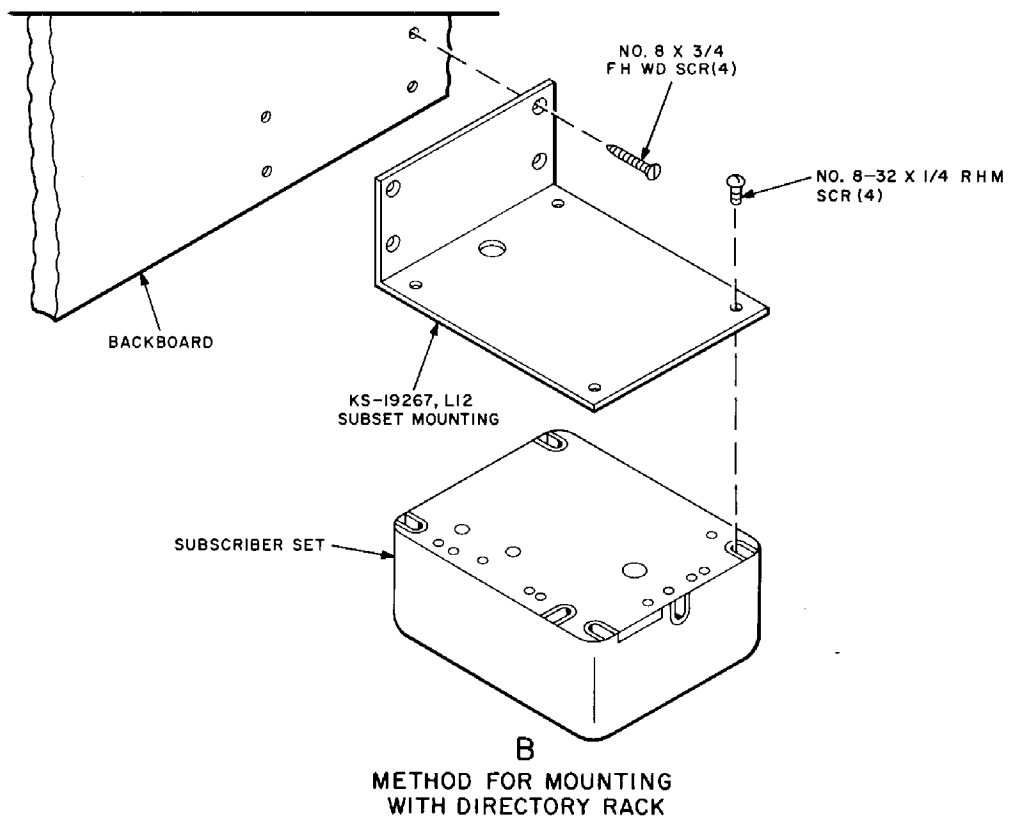
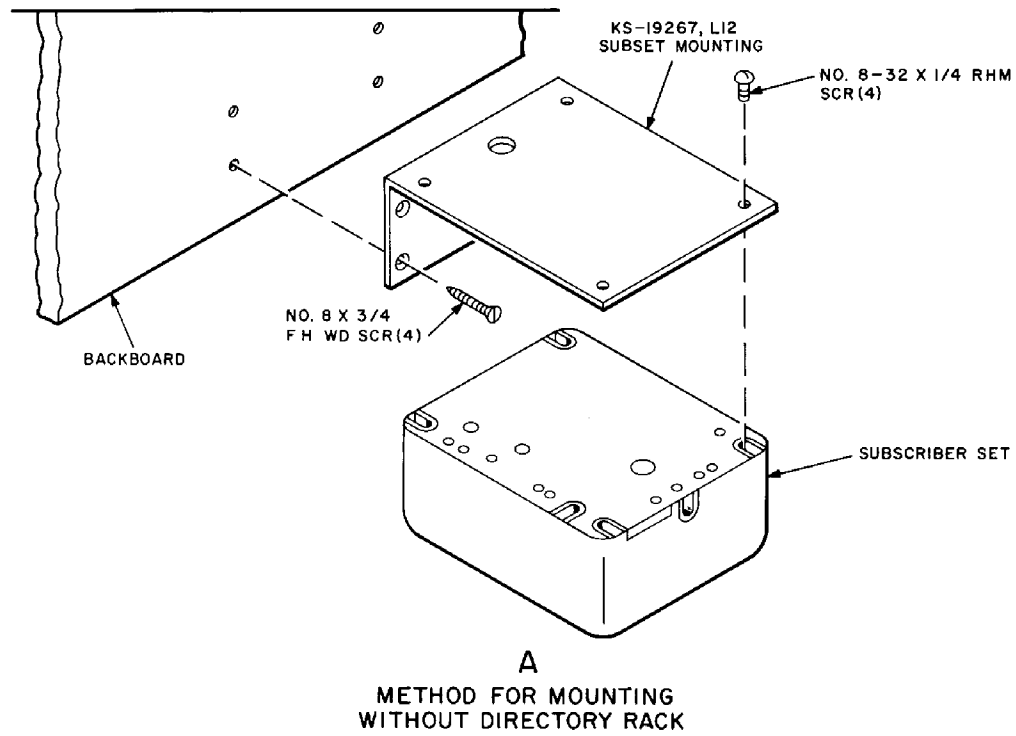
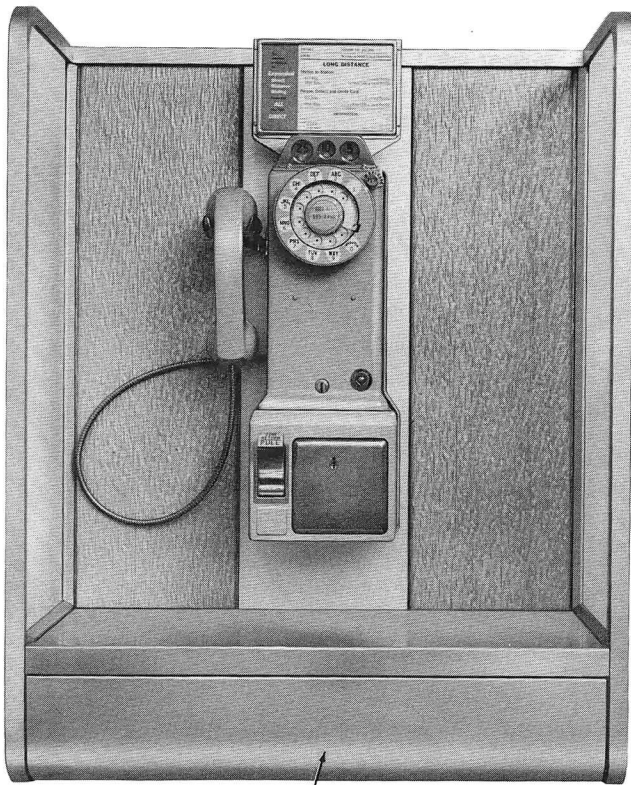


Fig. 3 — KS-19267, List 12 Subscriber Set Mounting



KS-19267, LI3  
COVER ASSEMBLY

**Fig. 4 — KS-19267 Coin Telephone Shelf  
With KS-19267, List 13 Cover  
Assembly**

**3.16** If no KS-19267, List 11 directory rack nor KS-19267, List 13 cover assembly is used, secure writing shelf to frame assembly using three No. 8-32 by 7/16 fillister head screws.

**3.17** If a subscriber set is required, mount under the writing shelf as shown in Fig. 3 using KS-19267, List 12 mounting.

**3.18** If KS-19267, List 11 directory rack is required, install as shown in Fig. 6.

**3.19** If KS-19267, List 13 cover assembly is required, install as shown in Fig. 7.

**3.20** To add additional shelves to existing installations, proceed as follows:

- (a) If KS-19267, List 11 director rack is present, remove per Fig. 6.

- (b) If KS-19267, List 13 cover assembly is present, remove per Fig. 7.

- (c) Remove the following per Fig. 5:

- Writing Shelf
- Curved Column
- Side Panel
- Rear Panel

- (d) Remove the following per Fig. 8:

- 1/4-20 by 5/16 flathead screws
- No. 6-32 by 1/4 binding head screws
- 1/4-20 by 3/4 flathead screws
- B-196765 strip
- No. 10-32 by 9/16 flathead screws
- B-196762 Column

- (e) Install B-196772 T-strip where B-196762 column was removed.

- (f) Install B-196765 strip in its original position.

- (g) Reassemble all parts in reverse order as outlined in (a) through (d).

- (h) Perform operations outlined in 3.02 through 3.19 for each additional shelf installed.



*Ensure that the curved column, which is common between two shelves, has a hole on each side at writing shelf level.*

#### 4. MAINTENANCE

**4.01** The local telephone company shall establish the appearance standards of all exposed surfaces.

**4.02** The local telephone company shall establish the safety standards for all coin telephone shelves.

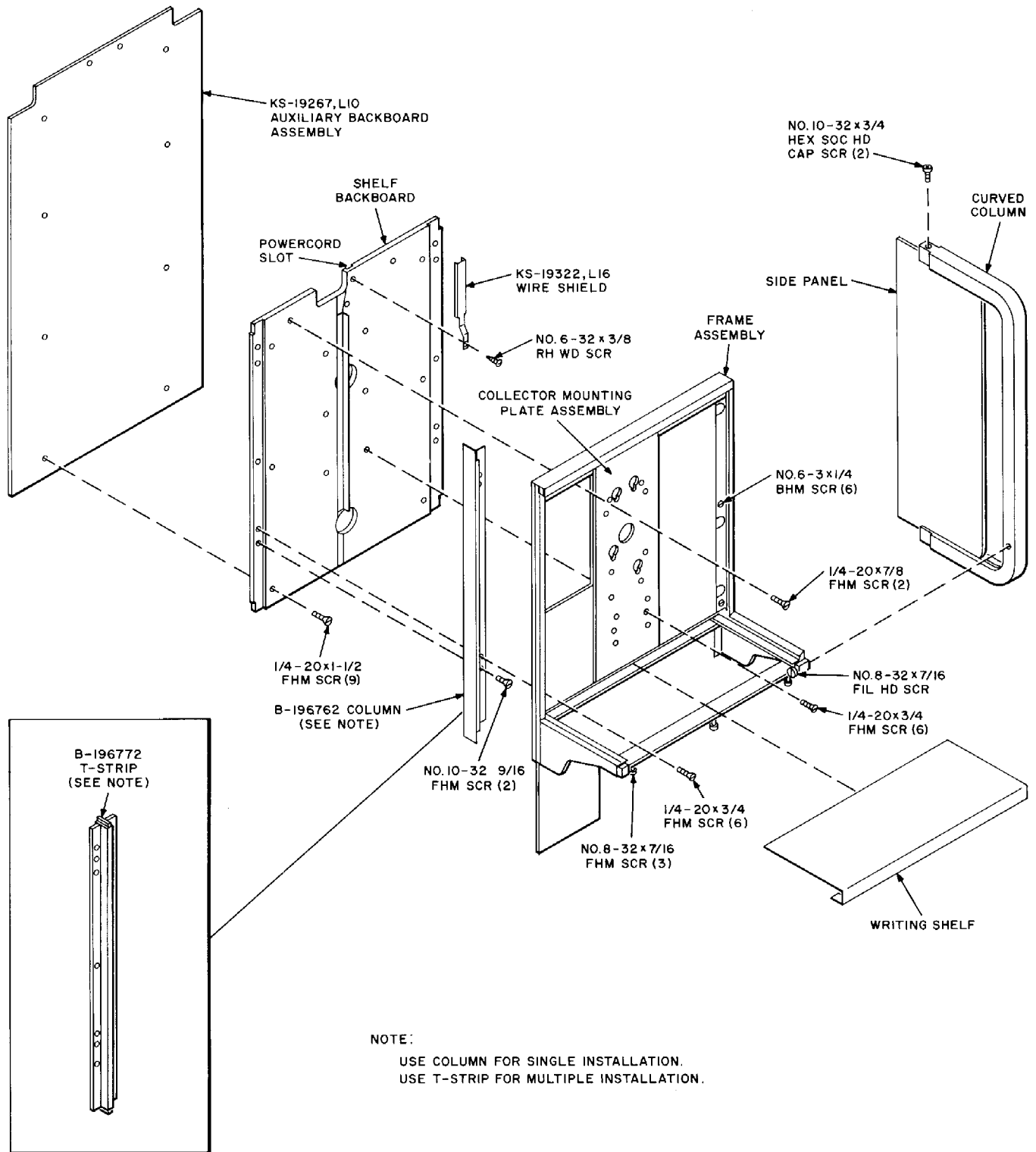
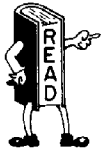


Fig. 5 — Assembly of KS-19267 Shelf

- 4.03 Inspect the approach to the shelf and ensure that it is free of all hazards.
- 4.04 Ensure that all visible assembly screws are present and secure.
- 4.05 Clean the shelf as follows:



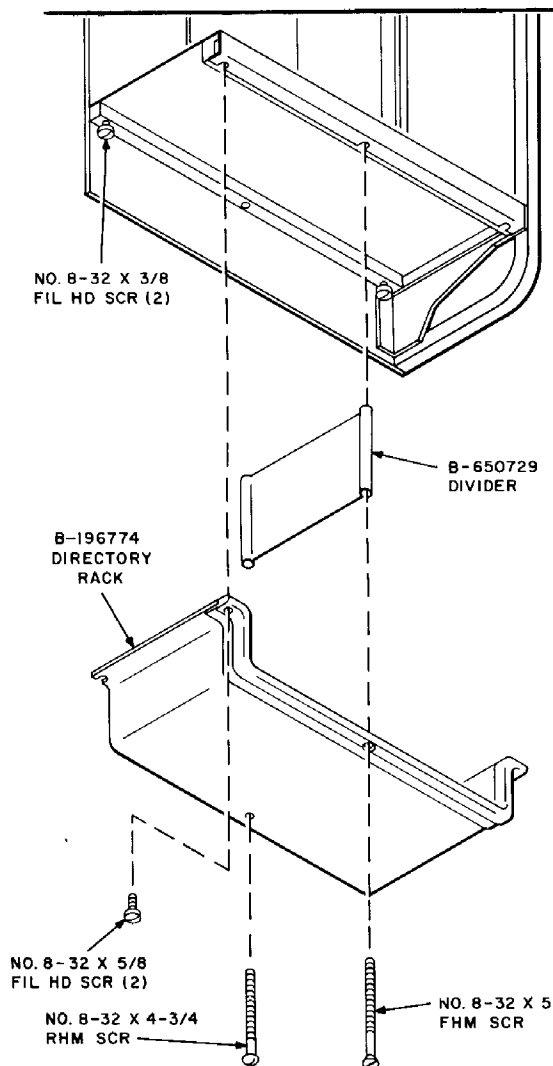
*Exercise extreme care while using cleaner so as not to cause property damage.*

- (a) Mix one part KS-19342 cleaner with approximately sixteen parts of water and apply with a sponge.
- (b) Rinse thoroughly with water being careful not to damage the surrounding area.
- (c) Remove heavy deposits of greasy substances with KS-7860 petroleum spirits.

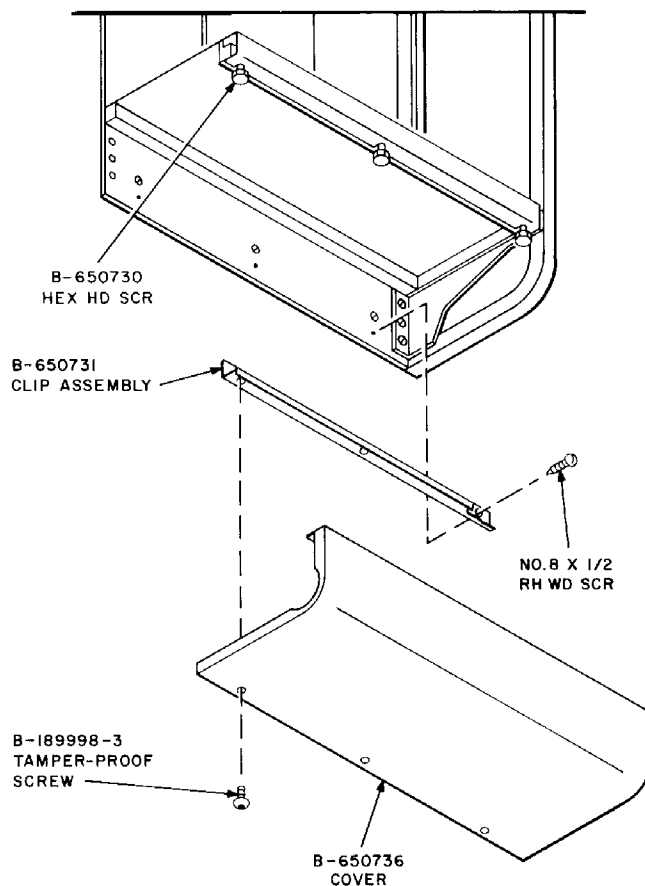


**KS-7860 petroleum spirits is flammable. Use safety precautions while using.**

- (d) See section entitled Public Telephone Signs, Illuminated Types, for maintenance of KS-19322 sign.

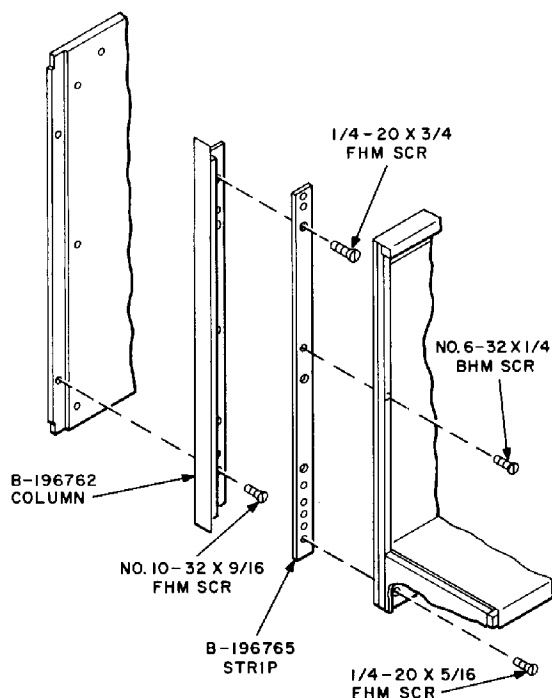


**Fig. 6 — Installation of KS-19267, List 11 Directory Rack**



**Fig. 7 — Installation of KS-19267 List 13 Cover Assembly**





(e) Replace any part of the shelf which does not meet local telephone company standards.

Table B lists the parts that may be easily replaced in the field. Refer to Table A for parts with list numbers.

**Fig. 8 — Partial View of Shelf Assembly**

**TABLE B**

**MAINTENANCE PARTS**

PART	NUMBER	DESCRIPTION
T-Strip	B-196772	Used in place of columns to convert single installations to multiple
Curved Column	B-196763-1	Center (multiple installations)
Curved Column	B-196763-2	Right side
Curved Column	B-196763-3	Left side
Column	B-196762-1	Right side
Column	B-196762-2	Left side
Collector Mounting Plate	B-196775	To mount coin collector
Backboard Assembly	B-196770	Shelf backboard
Shelf	B-196771	Stainless shelf